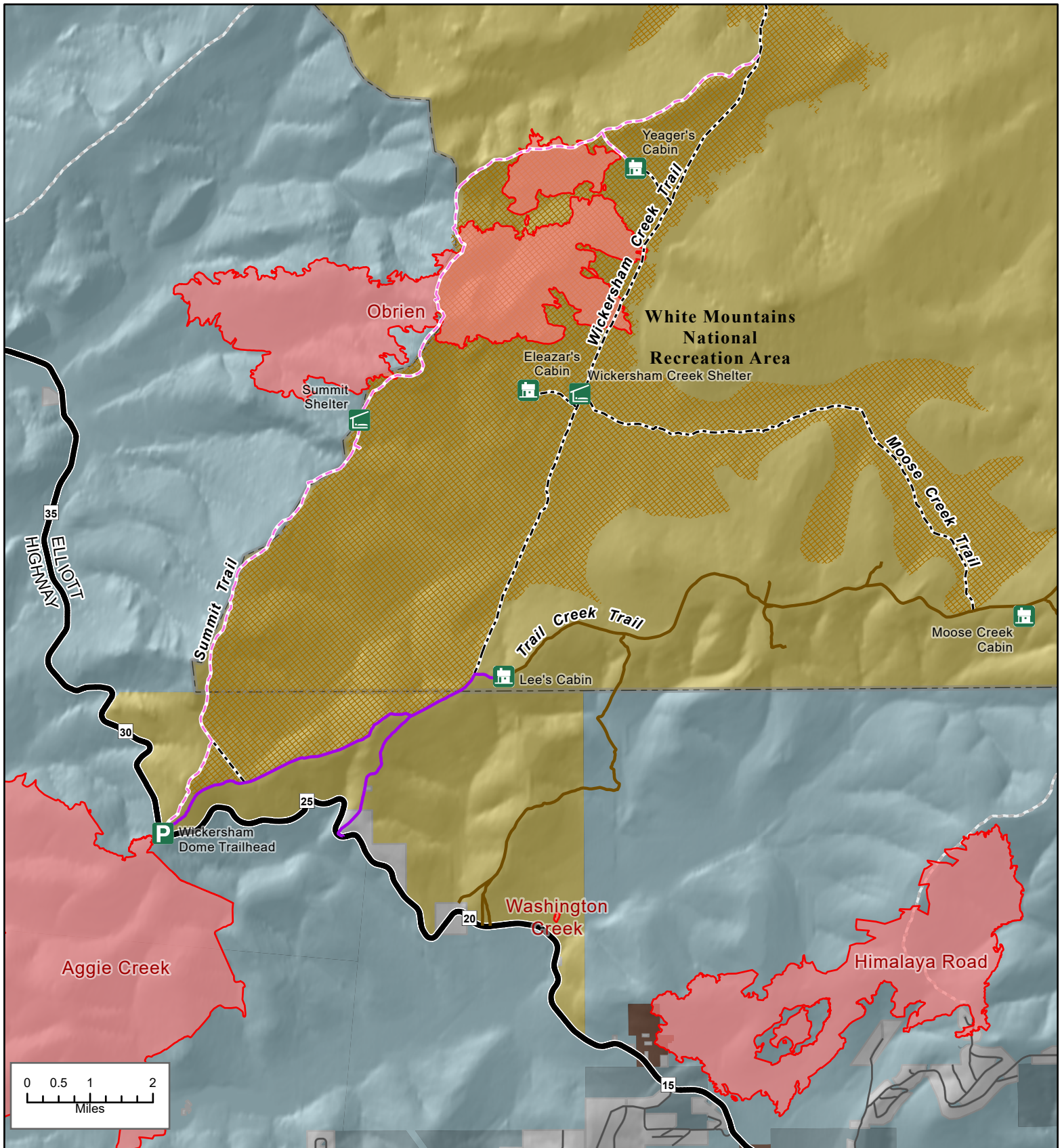




Wickersham Creek Area and Summit Trail - Obrien fire closure ends August 15

U.S. DEPARTMENT OF THE INTERIOR | BUREAU OF LAND MANAGEMENT | ALASKA | WHITE MOUNTAINS NATIONAL RECREATION AREA



- Fire Perimeter
- BLM Trails - Summer Allowed Use
 - Non-motorized and mechanized use only
 - Open to class 1, 2 and 3 Ebikes and non-motorized travel.

- Use is limited to OHVs weighing 1000 pounds or less Curb Weight and a maximum width of 50-inches
- Use is limited to OHVs weighing 1500 pounds or less Curb Weight and up to 64 inches wide
- Non-BLM Trail

- No Summer Use of OHVs.
- Administered Lands
 - Bureau of Land Management
 - State
 - Local Government
 - Private
 - Native Allotment

Disclaimer: No warranty is made by the Bureau of Land Management as to the accuracy, reliability, or completeness of these data for individual or aggregate use with other data. Original data were compiled from various sources. This information may not meet National Map Accuracy Standards. This product was developed through digital means and may be updated without notification. The information displayed on this map should be used for graphic display only. For official land status information, refer to Cadastral Survey plats, Master Title Plats, and land status case-files.

