

- Fort Greely & Black Rapids Withdrawals
- BLM_Land
- State_Patent_TA
- Private_Land
- Delta WSRC
- Townships



Map Produced Under
Partnership Between
Alaska Department of Natural Resources, Div. of Mining, Land and Water
Public Access Assertion and Defense Unit
and
Alaska Department of Fish & Game

This map is based on the most recent data available; however the actual and/or historical location of the waters involved may differ from that shown on this map due to the changes in the waters over time. Land Status describes ownership types within a section. Please note that Land Status may not cover entire section; please refer to Master Title Plat for precise land ownership.

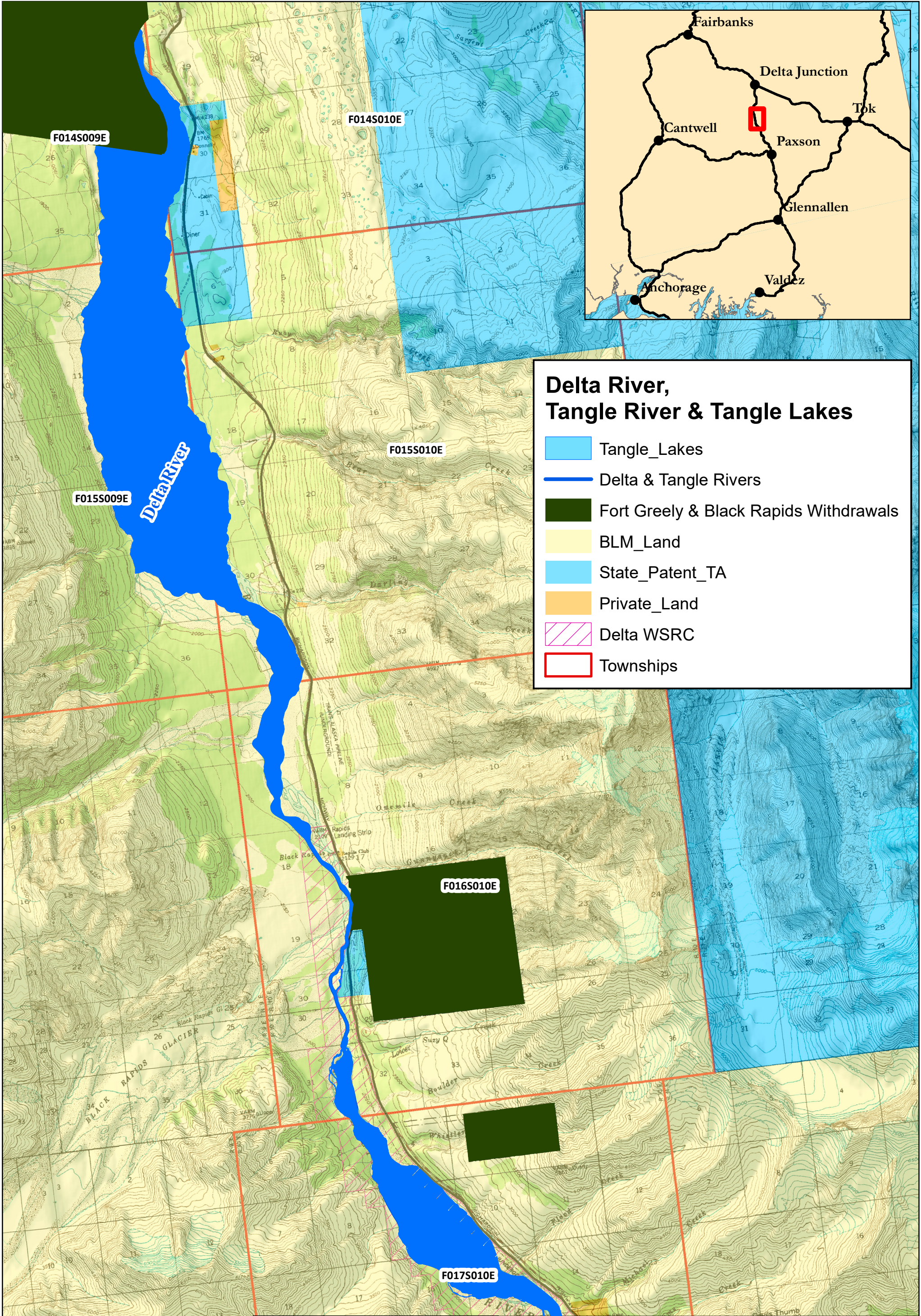
The State of Alaska makes no expressed or implied warranties (including warranties of merchantability and fitness) with respect to the character, function, or capabilities of this product or its appropriateness for any user's purposes. In no event will the State of Alaska be liable for any incidental, indirect, special, consequential or other damages suffered by the user or any other person or entity whether from use of the product, any failure thereof or otherwise, and in no event will the State of Alaska's liability to you or anyone else exceed the fee paid for the product.

Projection: Albers Equal Area
Navigable Waters Dataset
USGS National Hydrography Dataset
GeoNorth Ortho WMS Feed
Map Printed: May 6, 2019

0 2 4 8 Miles



**Recordable Disclaimer
of Interest Application
Map 1 of 4
Delta River, Tangle River
and Tangle Lakes**



Delta River, Tangle River & Tangle Lakes

- Tangle_Lakes
- Delta & Tangle Rivers
- Fort Greely & Black Rapids Withdrawals
- BLM_Land
- State_Patent_TA
- Private_Land
- Delta WSRC
- Townships



Map Produced Under
Partnership Between
Alaska Department of Natural Resources, Div. of Mining, Land and Water
Public Access Assertion and Defense Unit
and
Alaska Department of Fish & Game



This map is based on the most recent data available; however the actual and/or historical location of the waters involved may differ from that shown on this map due to the changes in the waters over time. Land Status describes ownership types within a section. Please note that Land Status may not cover entire section; please refer to Master Title Plat for precise land ownership.

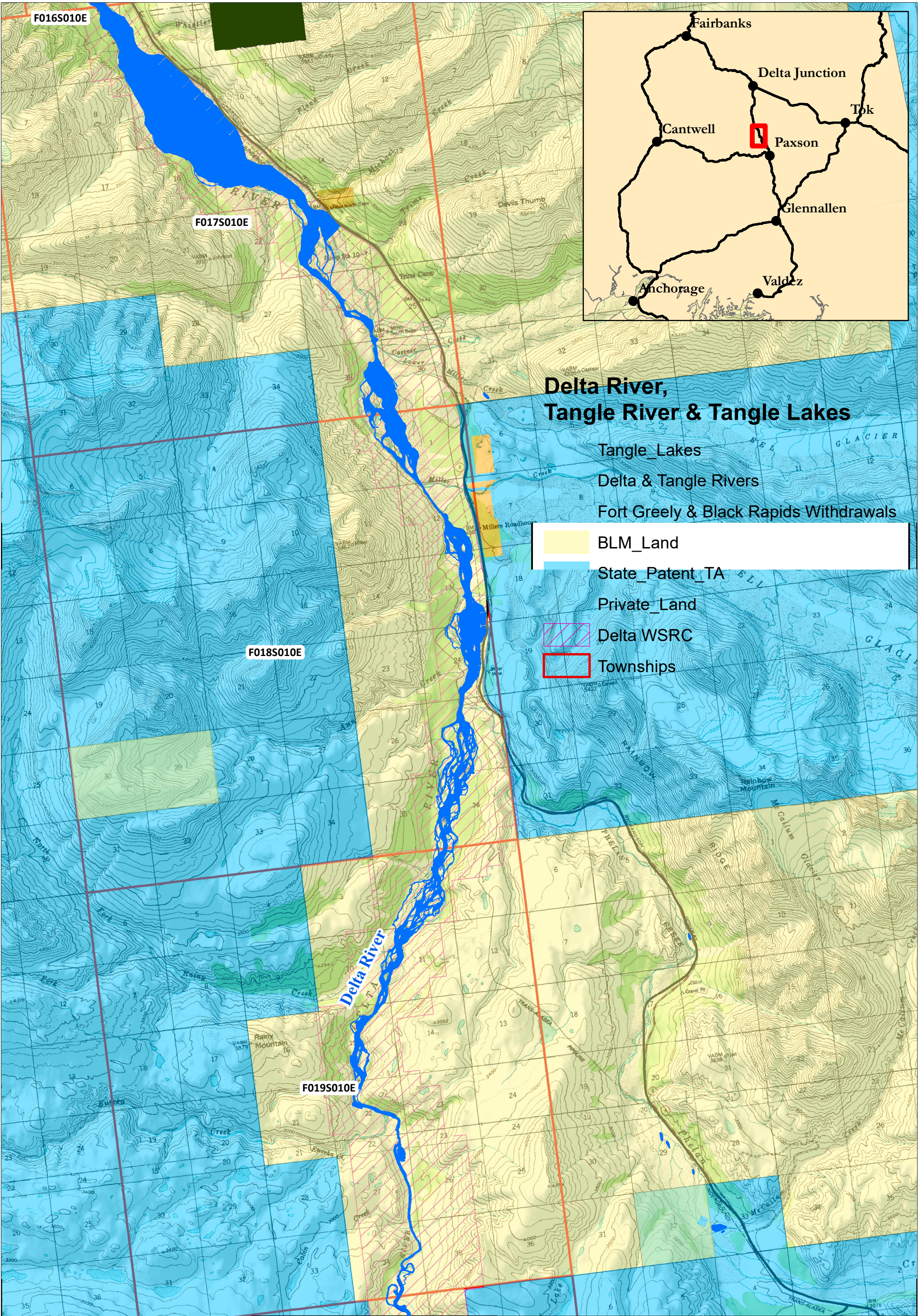
The State of Alaska makes no expressed or implied warranties (including warranties of merchantability and fitness) with respect to the character, function, or capabilities of this product or its appropriateness for any user's purposes. In no event will the State of Alaska be liable for any incidental, indirect, special, consequential or other damages suffered by the user or any other person or entity, whether from use of the product, any failure thereof or otherwise, and in no event will the State of Alaska's liability to you or anyone else exceed the fee paid for the product.

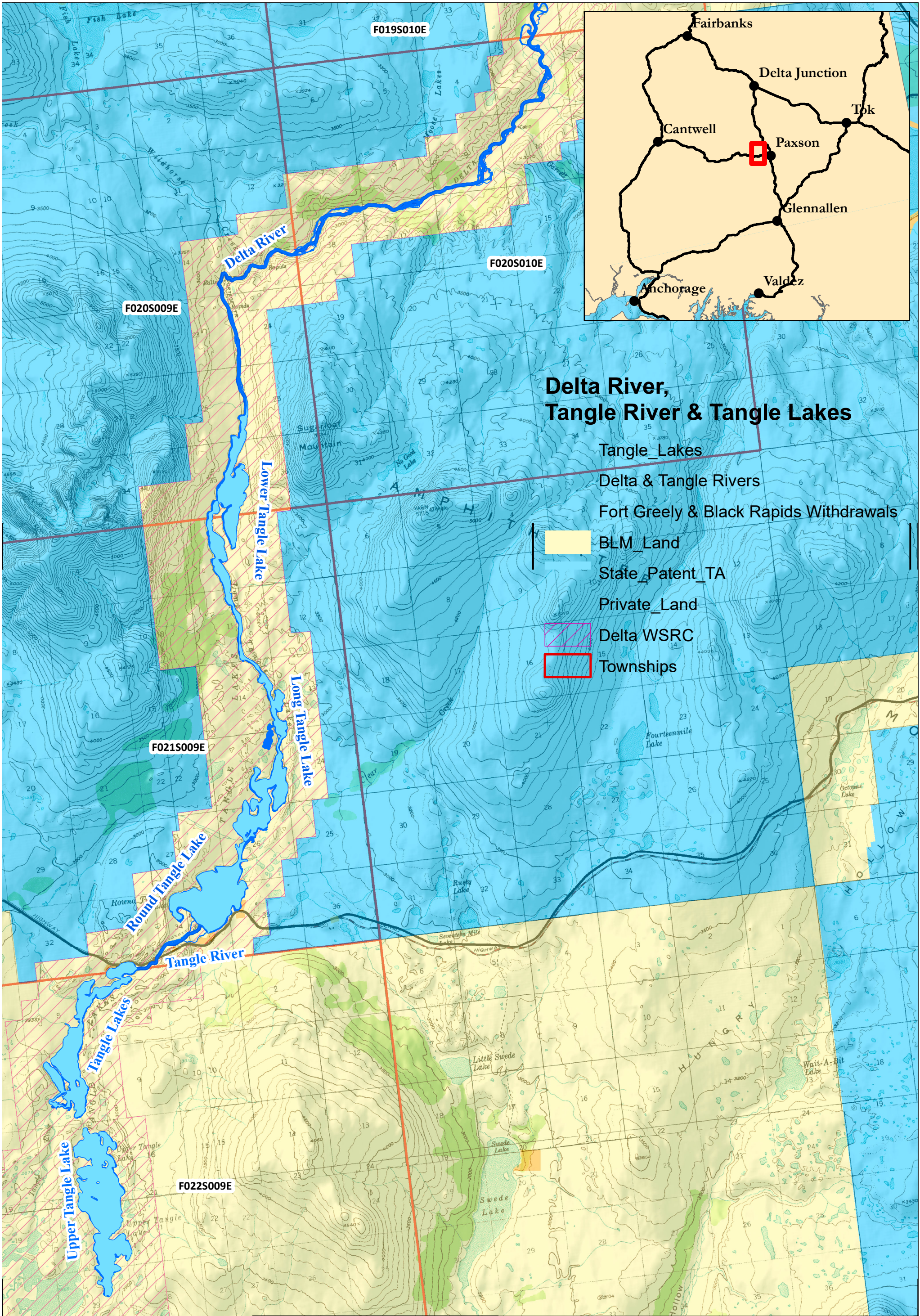
Projection: Albers Equal Area
Navigable Waters Dataset
USGS National Hydrography Dataset
GeoNorth Ortho WMS Feed
Map Printed: May 6, 2019

0 0.5 1 2 Miles



**Recordable Disclaimer
of Interest Application
Map 2 of 4
Delta River, Tangle River
and Tangle Lakes**





Map Produced Under
Partnership Between
Alaska Department of Natural Resources, Div. of Mining, Land and Water
Public Access Assertion and Defense Unit
and
Alaska Department of Fish & Game



This map is based on the most recent data available; however the actual and/or historical location of the waters involved may differ from that shown on this map due to the changes in the waters over time. Land Status describes ownership types within a section. Please note that Land Status may not cover entire section; please refer to Master Title Plat for precise land ownership.

The State of Alaska makes no expressed or implied warranties (including warranties of merchantability and fitness) with respect to the character, function, or capabilities of this product or its appropriateness for any user's purposes. In no event will the State of Alaska be liable for any incidental, indirect, special, consequential or other damages suffered by the user or any other person or entity whether from use of the product, any failure thereof or otherwise, and in no event will the State of Alaska's liability to you or anyone else exceed the fee paid for the product.

Projection: Albers Equal Area
Navigable Waters Dataset
USGS National Hydrography Dataset
GeoNorth Ortho WMS Feed
Map Printed: May 6, 2019

0 0.5 1 2 Miles



**Recordable Disclaimer
of Interest Application
Map 4 of 4
Delta River, Tangle River
and Tangle Lakes**