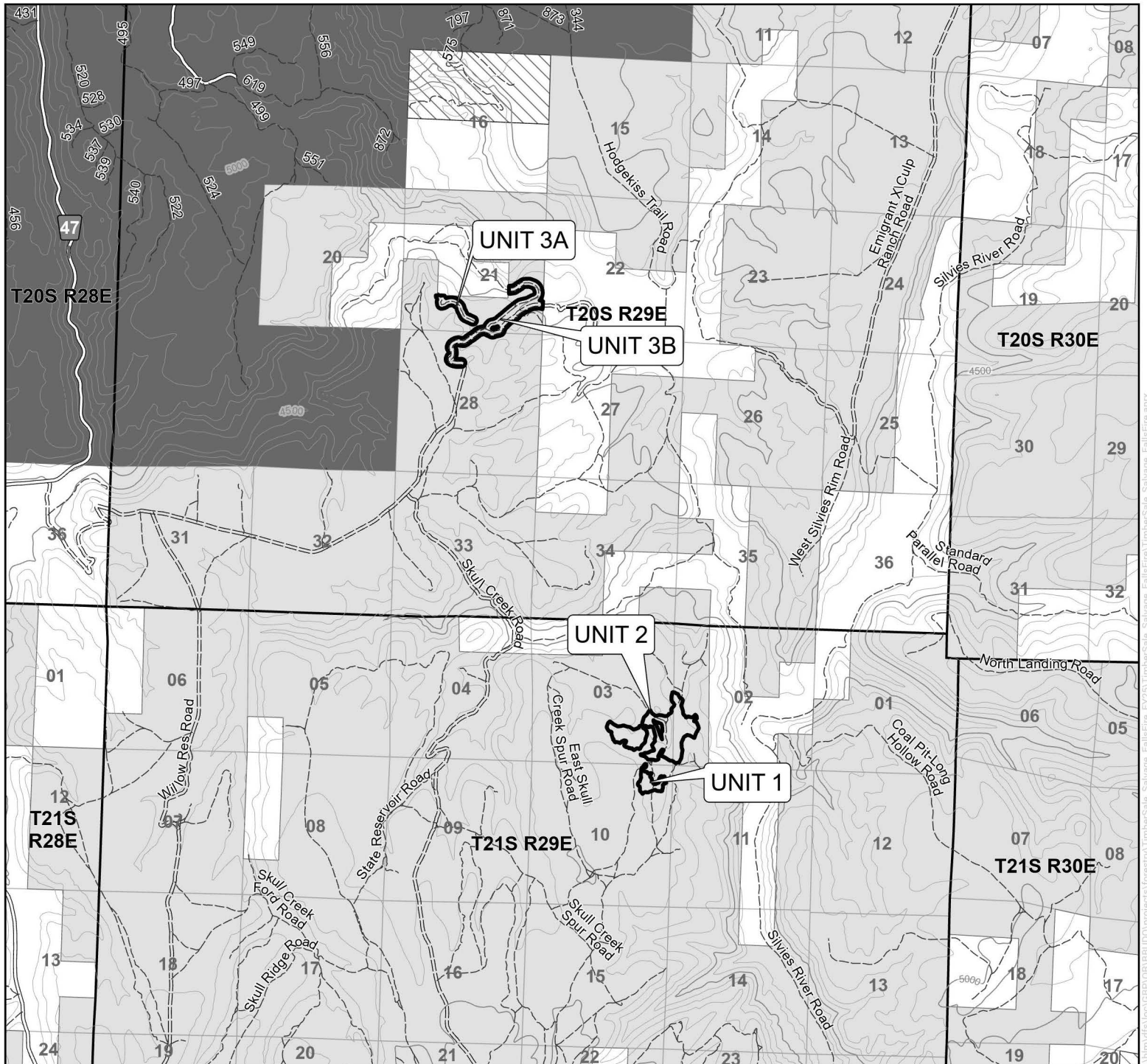


USDI-BLM BURNS DISTRICT  
T. 20 S., R. 29 E., SEC. 21, 28;  
T. 21 S., R. 29 E., SEC. 02, 03, 10, WILL. MER.  
FALLS FIRE SALVAGE TIMBER SALE  
HARNEY COUNTY

TIMBER SALE CONTRACT MAP  
CONTRACT NO. ORB00-TS-2025-0001  
EXHIBIT A - Vicinity Map  
PAGE 1 of 3



- |                               |                           |                    |
|-------------------------------|---------------------------|--------------------|
| Salvage Unit                  | Bureau of Land Management | Township and Range |
| Paved or Gravel Road          | U.S. Forest Service       | Section Line       |
| Natural Improved Surface Road | State Land                |                    |
| Natural/Unk Surface Road      | Privately Owned           |                    |

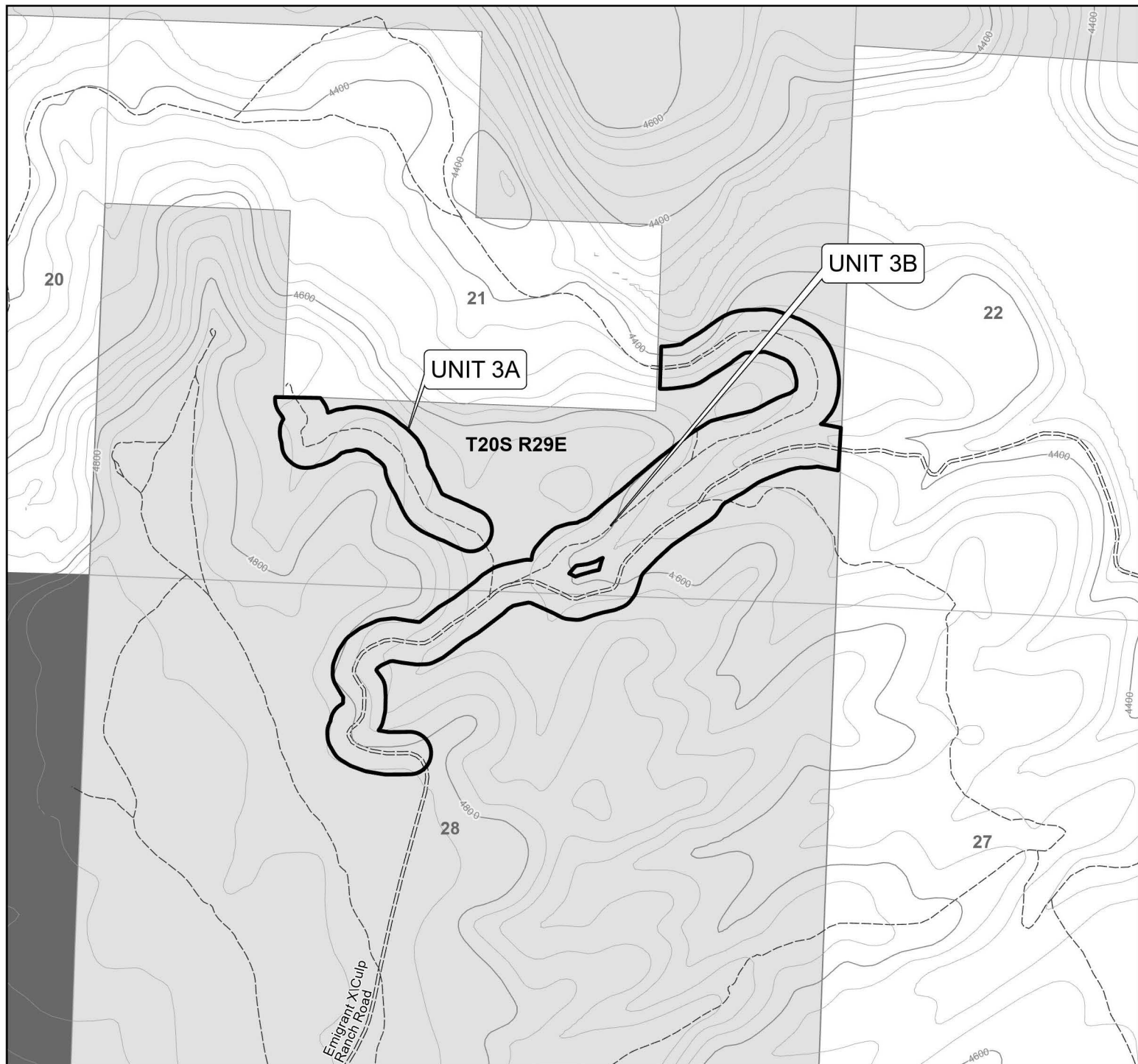
0 3,000 6,000 9,000 Feet  
1 inch = 5,280 feet



United States Department of Interior  
Bureau of Land Management  
Burns District Office  
28910 Highway 20 West  
Hines, OR 97738  
(541) 573-4400



No warranty is made by the Bureau of Land Management as to the accuracy, reliability, or completeness of these data for individual or aggregate use with other data. Original data were compiled from various sources and may be updated without notification.



- |                               |                           |                    |
|-------------------------------|---------------------------|--------------------|
| Salvage Unit                  | Bureau of Land Management | Township and Range |
| Natural Improved Surface Road | U.S. Forest Service       | Section Line       |
| Natural/Unk Surface Road      | Privately Owned           |                    |

0 620 1,240 1,860 Feet  
1 inch = 1,000 feet



United States Department of Interior  
Bureau of Land Management  
Burns District Office  
28910 Highway 20 West  
Hines, OR 97738  
(541) 573-4400







- |                           |                    |
|---------------------------|--------------------|
| Salvage Unit              | Privately Owned    |
| Natural/Unk Surface Road  | Township and Range |
| Bureau of Land Management | Section Line       |

0 620 1,240 1,860 Feet  
1 inch = 1,000 feet

No warranty is made by the Bureau of Land Management as to the accuracy, reliability, or completeness of these data for individual or aggregate use with other data. Original data were compiled from various sources and may be updated without notification.

United States Department of Interior  
Bureau of Land Management  
Burns District Office  
28910 Highway 20 West  
Hines, OR 97738  
(541) 573-4400

