



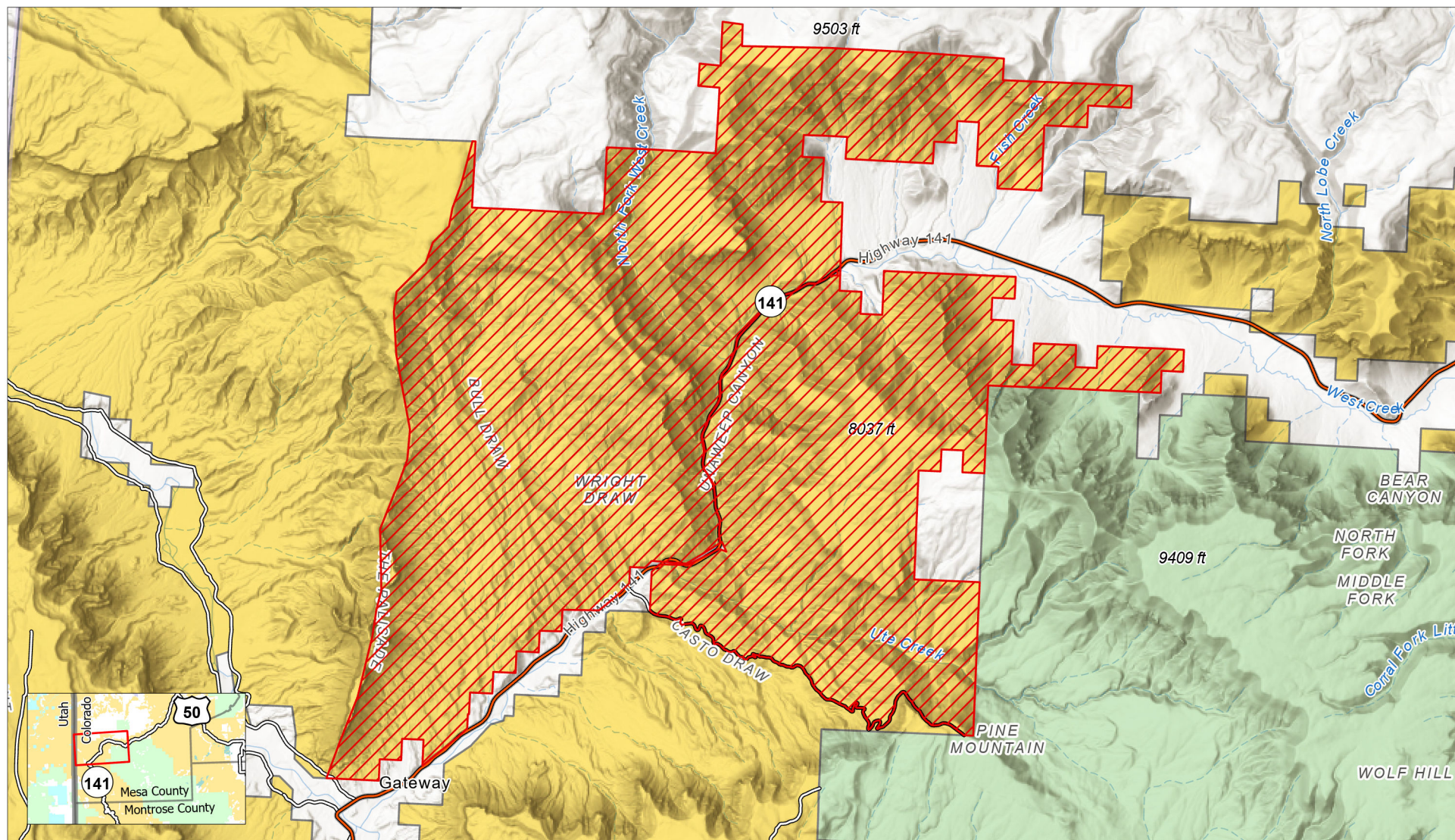
Turner Gulch Fire Area Closure

UPDATED Bureau of Land Management Temporary Closure Due to Fire Activity

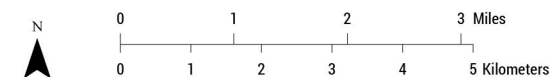
Bureau of Land Management
Grand Junction Field Office
2815 H Road
Grand Junction, CO 81506
970-244-3000



7/23/2025



- Turner Gulch Closure - 22 July 2025 Update
- Interstate Highway
- State and US Highways
- County Roads
- Bureau of Land Management
- Private
- US Forest Service



No warranty is made by the Bureau of Land Management as to the accuracy, reliability, or completeness of this map or the data displayed for individual use or aggregate use with other data.