



U.S. Department of the Interior  
Bureau of Land Management

# Pocatello Field Office

## Recreation Fee Sites Business Plan

August 2025

Blackfoot Reservoir  
Campground

(BLM Photo)



## **Mission statement**

The Bureau of Land Management sustains the health, diversity, and productivity of the public lands for the use and enjoyment of present and future generations.

## **Cover Photo**

Blackfoot Reservoir Campground

## **For more information**

To request a copy of this publication please contact:

BLM Pocatello Field Office  
4350 Cliffs Drive, Pocatello, ID 83204  
208-478-6340

BLM Pocatello Field Office Recreation Fee Sites Business Plan

**Recommendations, Reviews, and Approvals**

Recommended by:

---

Blaine Newman, Field Manager, Pocatello Field Office

Date

Reviewed by:

---

Martha Price, District Manager, Idaho Falls District Office (acting)

Date

Approved by:

---

June Shoemaker, Idaho State Director (acting)

Date

This business plan was prepared by the Bureau of Land Management's Pocatello Field Office pursuant to the Federal Lands Recreation Enhancement Act of 2004 (16 U.S.C. 6801-6814) and BLM recreation fee program policies. It establishes future management goals and priorities for the Blackfoot Reservoir, Maple Grove, Red Point, and Pipeline Campgrounds within the Pocatello Field Office.



# United States Department of the Interior

BUREAU OF LAND MANAGEMENT

Pocatello Field Office

4350 Cliffs Drive

Pocatello, Idaho 83204-2105

(208) 478-6340

<https://www.blm.gov>



In Reply Refer To:  
2930 (IDI01000)

Dear Reader,

I would like to present for your review and comment the Draft Business Plan for the Bureau of Land Management (BLM) Pocatello Field Office (PFO) Recreation Fee Site Program. The PFO currently manages three recreation fee sites which includes the Blackfoot Reservoir, Maple Grove, and Redpoint Campgrounds. The PFO is also proposing to adopt an expanded amenity fee at Pipeline Campground. All recreation fee sites are located in southeastern Idaho and administered by the BLM PFO.

This business plan proposes a fee increase and the adoption of a new fee site to support facility maintenance, ensure public health and safety needs in response to rising visitor use, and to support the yearly operations and maintenance costs associated with the recreation sites. It includes a rationale for the proposed fee increases, a comparison to fees at other campgrounds and boat launches with similar amenities, an overview of operating costs, and anticipated revenue. Below is a comparison chart of existing fees and the proposed fees per day or per night.

Blackfoot Reservoir Campground	Existing Fee	Proposed Fee
Individual Fully Developed Campsites	\$10/Site/Night	\$20/Site/Night (Power hook-ups included)
Power Hook-Ups within the Fully Developed Campsites	\$5/Site/Night	Power hook-ups included directly into the Individually Fully Developed Campsite Fee.
Extra Vehicle Pass - Fully Developed Campsites	\$5/Extra Vehicle/Night	\$10/Extra Vehicle/Night
Individual Standard Campsites	\$5/Vehicle/Night	\$10/Vehicle/Night
Day-Use / Boat Ramp	\$5/Vehicle/Day	\$10/Vehicle/Day
RV Dump Station	\$5/Vehicle/Day	\$10/Vehicle/Use
Day-Use Annual Pass	\$50	\$80
Day-Use Group Shelter	N/A	\$50 Rental Fee



<b>Maple Grove &amp; Redpoint Campgrounds</b>	<b>Existing Fee</b>	<b>Proposed Fee</b>
Individual Campsites	\$5/Vehicle/Night	\$15/Site/Night (2 Vehicle Max/Site)

<b>Pipeline Campground</b>	<b>Existing Fee</b>	<b>Proposed Fee</b>
Individual Campsites	N/A	\$10/Vehicle/Night (2 Vehicle Max/Site)
Day-Use / Boat Ramp	N/A	\$5/Vehicle/Day
Day-Use Annual Pass	N/A	\$50
Electrical Hook-Up Fee (If power hook-ups are established in the future)	N/A	\$5/Night

The Federal Land Policy and Management Act (FLPMA) authorizes the BLM to regulate the use of public lands, and the Federal Lands Recreation Enhancement Act (FLREA) authorizes the BLM to collect recreational fees when sites and areas meet specific criteria. With the increase in use and necessary facilities, these sites meet the criteria outlined in FLREA.

The plan will be presented to the BLM Idaho Resource Advisory Council (RAC) for their review and recommendation for approval to the BLM Idaho State Director. After incorporating public comments and RAC input, the final business plan for the PFO Recreation Fee Site Program would be approved and implemented April 15, 2026, or 180 days following the publication of a *Federal Register* notice announcing the new fee site (i.e., Pipeline Campground).

A public comment period has been established to give you the opportunity to submit feedback on the proposed business plan and associated fee proposal. Comments are due by August 15, 2025. Comments will be accepted through the following means:

- Email: [blm\\_id\\_po\\_recreation@blm.gov](mailto:blm_id_po_recreation@blm.gov)
- U.S. Mail: BLM Pocatello Field Office, 4350 Cliffs Drive, Pocatello, ID 83204

Thank you for your interest in your public lands.

Sincerely,

Blaine Newman  
Field Manager

## Table of Contents

Executive Summary .....	8
Blackfoot Reservoir Campground .....	8
Maple Grove and Redpoint Campgrounds .....	9
Pipeline Campground .....	9
<i>Table 1. Proposed Fee Structure .....</i>	<i>9</i>
Authorities and Regulations .....	10
Introduction to the Pocatello Field Office Recreation Program .....	12
<i>Table 2: Estimated Number of Visits at Pocatello Field Office Fee Sites, Fiscal Years 2020 - 2024 .....</i>	<i>13</i>
Description of Each Existing or Proposed Fee Site/Area .....	13
Blackfoot Reservoir Campground .....	13
<i>Image 1. Blackfoot Reservoir Campground aerial .....</i>	<i>13</i>
<i>Image 2. Blackfoot Reservoir Campground Map .....</i>	<i>15</i>
Maple Grove Campground .....	16
<i>Image 3. Maple Grove Campground boat ramp, located on the Oneida Narrows Reservoir .....</i>	<i>16</i>
Redpoint Campground .....	17
<i>Image 4. Red Point Campground, located on the Bear River .....</i>	<i>17</i>
<i>Image 5. Maple Grove and Redpoint Campground Map .....</i>	<i>18</i>
Pipeline Campground .....	19
<i>Image 6. Pipeline Campground, located along the Snake River .....</i>	<i>19</i>
<i>Image 7. Pipeline Campground Map .....</i>	<i>20</i>
Recreation Expanded Amenity E-commerce Fee Rates .....	21
Operating Costs .....	21
<i>Table 3. Past 4 years costs of recreation fee site expenditures. ....</i>	<i>22</i>
Revenues .....	23
<i>Table 4. Yearly revenue by site 2021-2024 .....</i>	<i>23</i>
<i>Table 5. Yearly revenue combined .....</i>	<i>23</i>
<i>Table 6. Current 4-yr average versus estimated proposed revenues. ....</i>	<i>24</i>
Expenditures and Planned Future Projects .....	24
<i>Table 7. Yearly Revenues and Expenditures 2021-2024 for the current three recreation fee sites .....</i>	<i>25</i>
Fair Market Analysis and Fee Calculation .....	25
<i>Table 8. Comparable campground market analysis for the three existing fee sites .....</i>	<i>26</i>

<i>Table 9. Comparable campground and boat ramp amenity and fee comparison for Pipeline Campground</i> .....	27
Impacts of Fee Adjustment and Rationale .....	28
Positive Impacts of Adopting Proposed Fees.....	28
Impacts of Not Adopting Proposed Fees .....	29
Prohibitions on Charging FLREA Fees .....	29
Fee Discounts .....	29
Public Outreach .....	30
Feedback Mechanisms .....	30

## Executive Summary

This document introduces a proposed fee increase by the Bureau of Land Management (BLM) Pocatello Field Office (PFO) for the three recreation fee sites it manages in southeastern Idaho, as well as adding an expanded amenity fee for overnight camping and a standard amenity fee for day-use at Pipeline Campground. The Blackfoot Reservoir, Maple Grove, and Redpoint Campgrounds are managed through issuance of Recreation Use Permits (RUP's) for short-term recreation use of specialized sites, facilities, and/or services which meet the fee collection criteria established by Federal Lands Recreation Enhancement Act (FLREA) of December 2004 (P.L. 108-477, as amended). The need for this action, the history of the fee program, proposed site fee changes, expenses generated by the recreation sites, plans for future fee expenditures, a financial analysis of fee charges for other similar recreation facilities, and impacts of proposed fee changes are outlined and explained in this business plan.

The BLM PFO prepared this business plan pursuant to the FLREA and BLM recreation permit and fee program policy. FLREA provides the BLM the authority to charge and collect recreation fees for benefits and services provided to visitors. FLREA also authorizes the BLM to retain collected fees locally, outlines how revenues may be used, and identifies specific limitations on recreation fees. Collected revenues may be expended for benefits and services such as facility repair, maintenance, enhancement, interpretation, visitor information and services, visitor needs assessments, signs, restoration, law enforcement related to public use and recreation, and operating or capital costs directly associated with the recreation fee program.

BLM Manual 2930 requires field offices to produce a business plan when establishing new fee areas and sites or modifying current recreation site fees. The business plan outlines the fee program for the identified location and thoroughly discusses and explains how fees are consistent with the criteria set forth in FLREA. Business plans assist offices in determining appropriate fee rates, outlining the costs of administering fee programs, and identifying priorities for future fee program expenditures. The plan also serves as the outreach document to provide the public with opportunities to participate in the development or modification of recreation fees.

After careful consideration of the current fee program, current and anticipated revenues and expenditures, and comparison with other regional recreation providers, the PFO proposes the following fee modifications:

### Blackfoot Reservoir Campground

- Increase the individual expanded amenity campsite fee from \$15 (\$10 campsite fee, plus \$5 electrical hook-up fee) to a combined \$20 per site per night in the fully developed campsites.
- Increase the individual expanded amenity campsite fee from \$5 to \$10 per night, per vehicle in the standard campsites.



- Increase the extra vehicle expanded amenity pass from \$5 to \$10 per night for the fully developed campsites (4 vehicles max per site).
- Increase the standard amenity day-use fee from \$5 to \$10 per day.
- Increase the expanded amenity RV dump station fee from \$5 to \$10 per use.
- Increase the standard amenity annual day-use pass fee from \$50 to \$80 per season (May 15<sup>th</sup> – September 15<sup>th</sup>, annually).
- Establish an expanded amenity reservable day-use group shelter rental fee of \$50 per day. All persons using the reserved day-use group shelter will still be required to obtain a day-use pass for \$10 per vehicle, per day.

### Maple Grove and Redpoint Campgrounds

- Increase the individual expanded amenity campsite fees from \$5 per vehicle, per night to \$15 per site, per night at both the Maple Grove and Redpoint Campgrounds, with a two-vehicle maximum per campsite (this includes one RV with vehicle in tow and one additional vehicle).

### Pipeline Campground

- Establish an expanded amenity fee of \$10 per night, per vehicle for overnight camping, with a two-vehicle maximum per campsite (one RV with vehicle in tow counts as one vehicle). Permit valid until 2:00PM last day of stay.
- Establish a standard amenity fee of \$5 per day or \$50 annual pass for day-use. This will include the use of the boat ramp, designated parking areas, vault toilet, trash services, kiosks with rules and regulations posted, picnic tables, and bank fishing.
- Will establish an expanded amenity fee of \$5 electrical hook-up fee, per night, if power is installed to each designated campsite in the future.

*Table 1. Proposed Fee Structure*

<b>Blackfoot Reservoir Campground</b>	<b>Existing Fee</b>	<b>Proposed Fee</b>
Individual Fully Developed Campsites	\$10/Site/Night	\$20/Site/Night (Power hook-ups included)
Power Hook-Ups – Fully Developed Campsites	\$5/Site/Night	Power hook-ups included directly into the Individually Fully Developed Campsite Fee.
Extra Vehicle Pass - Fully Developed Campsites	\$5/Extra Vehicle/Night	\$10/Extra Vehicle/Night
Individual Standard Campsites	\$5/Vehicle/Night	\$10/Vehicle/Night
Day-Use / Boat Ramp	\$5/Vehicle/Day	\$10/Vehicle/Day
RV Dump Station	\$5/Vehicle/Day	\$10/Vehicle/Use
Day-Use Annual Pass	\$50	\$80

Day-Use Group Shelter	N/A	\$50 Rental Fee
-----------------------	-----	-----------------

Maple Grove & Redpoint Campgrounds	Existing Fee	Proposed Fee
Individual Campsites	\$5/Vehicle/Night	\$15/Site/Night (2 Vehicle Max/Site)

Pipeline Campground	Existing Fee	Proposed Fee
Individual Campsites	N/A	\$10/Vehicle (2 Vehicle Max/Site)
Day-Use / Boat Ramp	N/A	\$5/Vehicle/Day
Day-Use Annual Pass	N/A	\$50
Electrical Hook-Up Fee (If power hook-ups are established in the future)	N/A	\$5/Site/Night

The proposed fee modifications are necessary to meet the growing expenses of the recreation fee sites program, especially the rising cost of annual maintenance and the associated increase in public use and increasing age of the campground facilities. Developed campgrounds and day-use areas are management tools used to prevent further resource damage and to provide better visitor services. Recreation fees are also considered a way to ensure that those who actively use developed recreation opportunities make a reasonable contribution towards protecting and enhancing those opportunities.

## Authorities and Regulations

This business plan has been prepared to meet the criteria defined in the Federal Lands Recreation Enhancement Act of 2004 (Public Law 108-447; Title VIII, Section 801; 16 U.S.C. 6801-6814). The authorities and regulations for this business plan are:

- **The Federal Land Policy and Management Act (FLPMA) of 1976** (Public Law 94-579; 43 U.S.C. 1701-1787) contains BLM's general land use management authority over the public lands and establishes outdoor recreation as one principal use of those lands. Section 302 (b) of FLPMA directs the Secretary of the Interior to regulate through permits or other instruments the use of the public lands. The BLM originally began collecting recreational fees for the use of public lands under this authority. Section 303 of FLPMA contains the BLM's authority to enforce the regulations and impose penalties.

- **The Federal Lands Recreation Enhancement Act (FLREA) of 2004** repealed applicable portions of the Land and Water Conservation Fund Act and replaced the BLM's authority to collect recreational fees. The current law provides the BLM the authority to establish, modify, charge, and collect recreation fees at federal recreation lands and waters that meet certain requirements. The FLREA also allows the BLM to keep the fee revenues at the local offices where they are collected and directs how the BLM will manage and utilize these revenues, including for expenses such as facility repair, maintenance and enhancement, interpretation, visitor information, services and needs assessments, signage, law enforcement directly related to public use and recreation, and operating or capital costs associated with the Recreation and Visitor Services program. The FLREA also established the America the Beautiful—The National Parks and Federal Recreational Pass program.
- **Title 43 Code of Federal Regulations, Part 2930 (43 CFR 2930) Permits for Recreation on Public Lands** contains the regulations governing BLM's recreation permitting program.

This business plan has also been prepared pursuant to all applicable BLM recreation fee program policies and guidance, including:

- BLM Manual 2930, Recreation Permits and Fees, Rel. 2-296 dated October 22, 2007
- BLM Handbook 2930-1, Recreation Permit and Fee Administration Handbook, Rel. 2-300 dated November 17, 2014

Definitions of Expanded Amenities from FLREA, Bureau of Land Management (BLM) recreation fee program policy and manual (Manual 2930 – Recreation Permits and Fees) for the area covered under this business plan:

- **Expanded Amenity Recreation Fees** cover specialized outdoor recreation sites and services including but not limited to developed campgrounds with at least a majority of the following amenities: (I) tent or trailer spaces, (II) picnic tables, (III) drinking water, (IV) access roads, (V) fee collection by an employee or agent of the BLM, (VI) reasonable visitor protection, (VII) refuse containers, (VIII) toilet facilities, (IX) simple devices for containing a campfire (Sec. 803.(g)(2)(A) of FLREA).
- **Additional Expanded Amenity** recreation facilities or services include rental of cabins, group day-use or overnight sites, binoculars or other equipment (Sec.803.(g)(2)(C) of FLREA); use of hookups for electricity, cable, or sewer (Sec.803.(g)(2)(D) of FLREA); use of sanitary dump stations (SEC.803.(g)(2)(E) of FLREA); and use of reservation services (Sec.803.(g)(2)(G) of FLREA).

- **Use of highly developed boat launches** with specialized facilities or services such as mechanical or hydraulic boat lifts or facilities, multi-lane paved ramps, paved parking, restrooms and other improvements such as boarding floats, loading ramps, or fish cleaning stations.

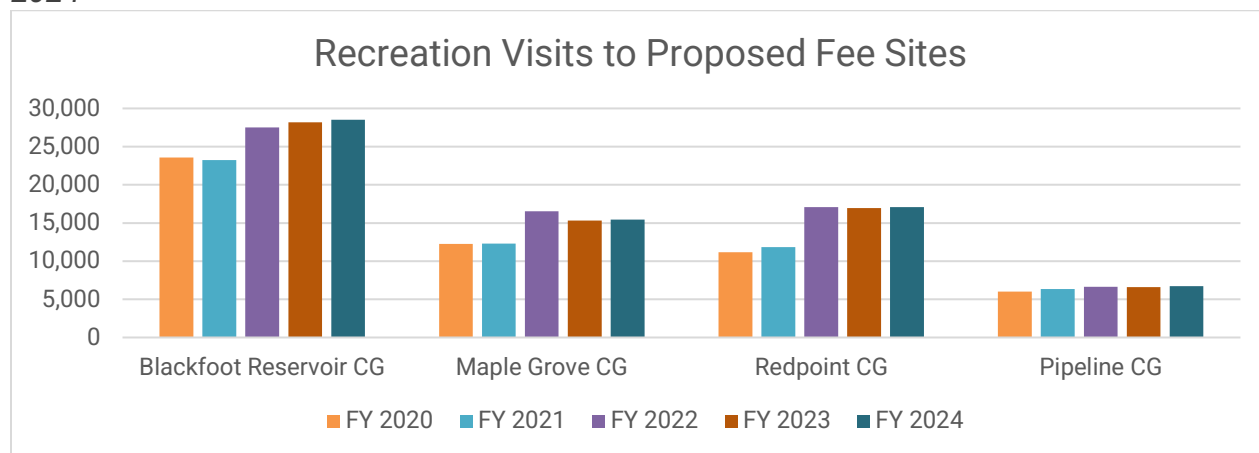
The BLM strives to manage recreation and visitor services to serve manifold visitor outdoor recreation demands while helping to maintain sustainable resource conditions and settings needed to conserve the public lands, so desired recreation opportunities remain available. The BLM's goals are committed to provide and receive fair value for the use of developed recreation facilities and services in a manner that meets public use demands, ensures a quality experience and enjoyment of natural and cultural resources, and improve access to appropriate recreation opportunities.

## Introduction to the Pocatello Field Office Recreation Program

The BLM PFO is the administrative unit responsible for the management of nearly 600,000 acres of public lands in southeastern Idaho. The PFO deals with the complex issues of managing isolated tracts of BLM managed lands throughout a wide geographic area. Located in scenic country along the Utah/Idaho/Wyoming borders, this is a wonderful place to visit. There are a wide variety of recreation opportunities ranging from the beautiful Blackfoot river, the stunning peaks of the Deep Creek Mountain Range, to the high desert of Juniper Valley. The PFO offers stunning scenery, peaceful solitude and outstanding opportunities for year-round recreation including hiking, camping, hunting, fishing, motorized and non-motorized boating, snowmobiling, cross-country skiing, motorized and non-motorized trails, horseback riding, wildlife watching, and scenic viewing.

The PFO currently manages three fee campgrounds: the Blackfoot Reservoir Campground for overnight camping and day-use, as well as Maple Grove and Redpoint Campgrounds for overnight camping. All three fee campgrounds are developed with sufficient amenities to allow the BLM to charge an expanded amenity fee for overnight camping and a standard amenity fee for day-use at Blackfoot Reservoir Campground. In 2019, the Pocatello Field Office Recreation Development Environmental Assessment (EA) addressed the need to improve and expand facilities within the Oneida Narrows, Campground, and Blackfoot River Special Recreation Management Areas (SRMA). This includes updating and improving facilities within Blackfoot Reservoir, Maple Grove, Redpoint, and Pipeline Campgrounds. If this fee proposal is approved, a fee structure will assist in maintaining and improving the campgrounds. Together, these four campgrounds host approximately 65,000 plus people annually, with visits steadily increasing every year. The PFO also manages multiple developed trailheads and river access sites/boat ramps along the Blackfoot, Bear, and Portneuf Rivers.

**Table 2: Estimated Number of Visits at Pocatello Field Office Fee Sites, Fiscal Years 2020 - 2024**



Recreation Visits to Proposed Fee Sites	FY 2020	FY2021	FY2022	FY2023	FY2024
Blackfoot Reservoir CG	23,556	23,247	27,500	28,200	28,504
Maple Grove CG	12,263	12,300	16,516	15,306	15,447
Redpoint CG	11,158	11,826	17,068	16,939	17,091
Pipeline CG	6,014	6,350	6,625	6,600	6,727

## Description of Each Existing or Proposed Fee Site/Area

### Blackfoot Reservoir Campground



*Image 1. Blackfoot Reservoir Campground aerial (BLM Photo)*

Blackfoot Reservoir Campground is situated along the southwest end of the Blackfoot Reservoir, approximately 13 miles north of Soda Springs, Idaho. The campground is located west of Idaho State Highway 34 between Jackson Hole, Wyoming, and Soda Springs, Idaho. This stretch of highway is designated as the Pioneer Historic Byway, a main route for travelers going to the Teton and Yellowstone National Parks, Bear Lake, and Utah. Travelers are often

looking for a campground that offers electrical hook-ups, potable water, and a dump station. Blackfoot Reservoir Campground is one of the only campgrounds to offer these amenities in this area.

Blackfoot Reservoir covers 18,000 surface acres when full and is the second largest reservoir in southeastern Idaho. The public utilizes the campground for its access to the reservoir, which is accessible from the campground for recreational activities such as fishing, camping, picnicking, motorized boating, non-motorized boating (i.e. kayaks, rafts, standup paddle boards, etc.), swimming, wildlife viewing, and hunting opportunities.

The campground has an annual fee season from May 15<sup>th</sup> – September 15<sup>th</sup>. There are 16 fully developed camp sites and 12 standard campsites. Each site within the fully developed campground has 50-watt power hook ups, potable water nearby, a tent pad, parking pad, shelter, picnic table, and a fire ring. The 12 standard campsites have parking pads, picnic tables, a fire ring, and access to potable water (see Table 1 for the existing fee structure).

Individual fully developed campsites include one RV with vehicle in tow, or one vehicle. A maximum of four vehicles is allowed per site with the purchase of extra vehicle passes. All vehicles must be parked in the designated graveled parking areas and/or overflow parking lot. In the standard campsites there is no maximum number of vehicles. Permit is valid until 2:00PM last day of stay and quiet hours are from 10:00PM – 6:00AM.

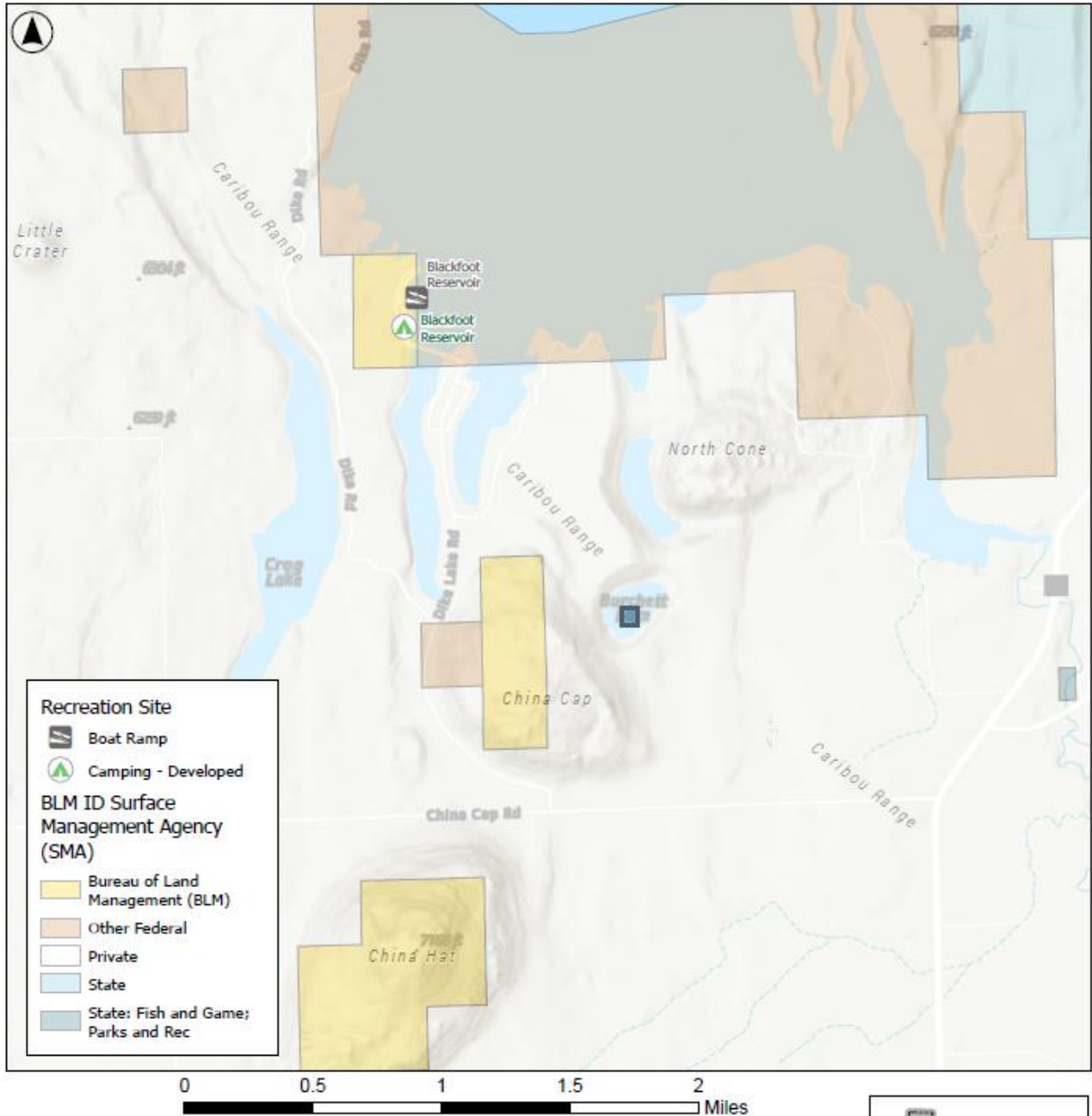
There are also day-use facilities available, which include large boat trailer graveled parking areas, a double lane concrete boat ramp with accessible boat docks, a secondary single lane concrete boat ramp, accessible sidewalk to a fishing platform, a group shelter with picnic tables, grills for cooking, and other small single picnic sites with shelters. Four double vaulted restrooms, potable water, and trash service are also available. Day use hours are from 6:00AM – 10:00PM.

An RV Dump Station is available on-site for the convenience of all overnight campers. This facility is available for those staying overnight as well as a one-time use option.

The campground has been a fee site since 2008. Since then, there have been numerous upgrades and improvements. Most improvements have been funded through grants received from the Idaho Department of Parks and Recreation (IDPR) and revenues generated from fees collected on site. Visitation at the campground is equally divided between the day-use area and the campsites for overnight camping, and visitors can pay at one of the two self-pay stations. New since 2024, the PFO implemented online access via Recreation.gov for reservations and Scan & Pay. Visitors can pay online with Scan & Pay for day-use, overnight camping, and the RV dump station, as well as booking of the reservable sites. Rules and regulations are posted at each kiosk.



# Blackfoot Reservoir Campground



BLM Pocatello Field Office  
4350 Cliffs Drive  
Pocatello, Idaho 83204  
Date: 5 August 2024



NO WARRANTY IS MADE BY THE BUREAU OF LAND MANAGEMENT. THE ACCURACY, RELIABILITY, OR COMPLETENESS OF THESE DATA FOR INDIVIDUAL USE OR AGGREGATE USE WITH OTHER DATA IS NOT GUARANTEED.

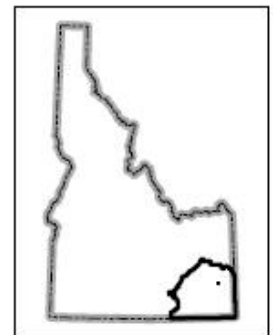
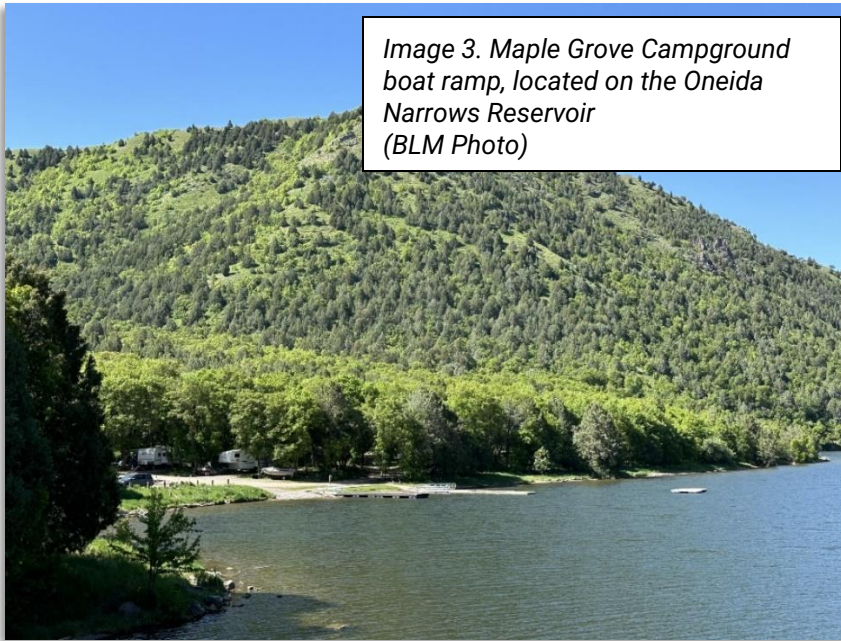


Image 2. Blackfoot Reservoir Campground Map

## Maple Grove Campground



*Image 3. Maple Grove Campground boat ramp, located on the Oneida Narrows Reservoir (BLM Photo)*

Maple Grove Campground is situated along the Oneida Narrows Reservoir, about 16 miles northeast of Preston, Idaho. This is one of two campgrounds located on the reservoir. The reservoir offers a wide variety of recreation opportunities, in partnership with PacifiCorp, such as wonderful fishing for bass and walleye,

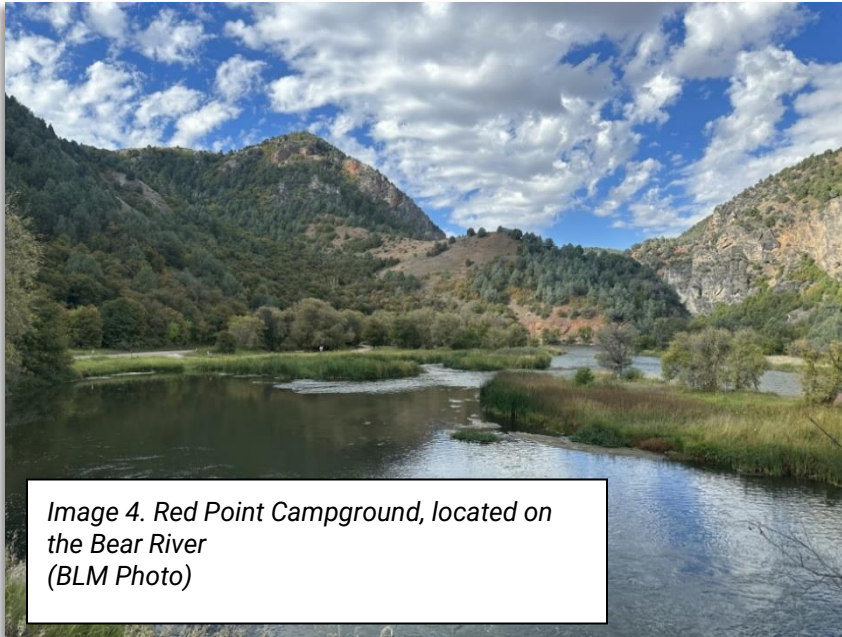
camping, picnicking, motorized boating and water sports, non-motorized boating (i.e. kayaks, rafts, float tubes, standup paddle boards, etc.), swimming, wildlife viewing, and hunting opportunities.

Maple Grove Campground has an annual fee season from May 15<sup>th</sup> – September 15<sup>th</sup>. There are 12 expanded amenity developed camp sites within the campground, along with a concrete boat ramp, two accessible boat docks, and a small boat trailer parking area. Two accessible vaulted restrooms are available within the campground, as well as two refuse trash containers. Each site has a parking pad, picnic table, barbecue grill, and a fire ring. There is no potable water or electrical hook-ups at the campground. There are two self-pay stations available for overnight camping with rules and regulations posted at each kiosk (see Table 1 for the existing fee structure), permit is valid until 2:00PM last day of stay and quiet hours are from 10:00PM – 7:00AM. No public day-use is allowed at the campground, and facilities are for paid campers only. There is a free day-use area with an associated boat ramp located approximately 1.0 miles south of the campground. The day-use site is located on private land owned by PacifiCorp, who manages and maintains it.

The campground has been a fee site since 1997. Since then, there have been numerous upgrades and improvements to accommodate growth and improve campers' experiences. In 2010, two new toilets were installed with funds provided by American Recovery and Reinvestment Act (ARRA) of 2009. An accessible campsite was also built at that time. In the past few years, the PFO also installed new self-pay stations, kiosks, and signs. The PFO utilized grant funding from the IDPR in June 2020 to develop the boat ramp, expand the boat trailer parking area, and install new docks with an accessible sidewalk and gangway. The PFO has seen increased use at Maple Grove Campground in recent years (see Table 2 for estimated number of visits). The PFO is in

the process of implementing Recreation.gov and Scan & Pay to allow users to reserve sites and utilize e-commerce for an easier option to pay fees.

## Redpoint Campground



*Image 4. Red Point Campground, located on the Bear River  
(BLM Photo)*

Redpoint Campground is situated along the Bear River, about 13 miles northeast of Preston, Idaho. This is the only campground located on the Bear River in the Oneida Narrows. The Narrows offers a wide variety of recreation opportunities, with a partnership with PacifiCorp, recreators can enjoy wonderful fishing for bass and rainbow trout, camping, picnicking, non-

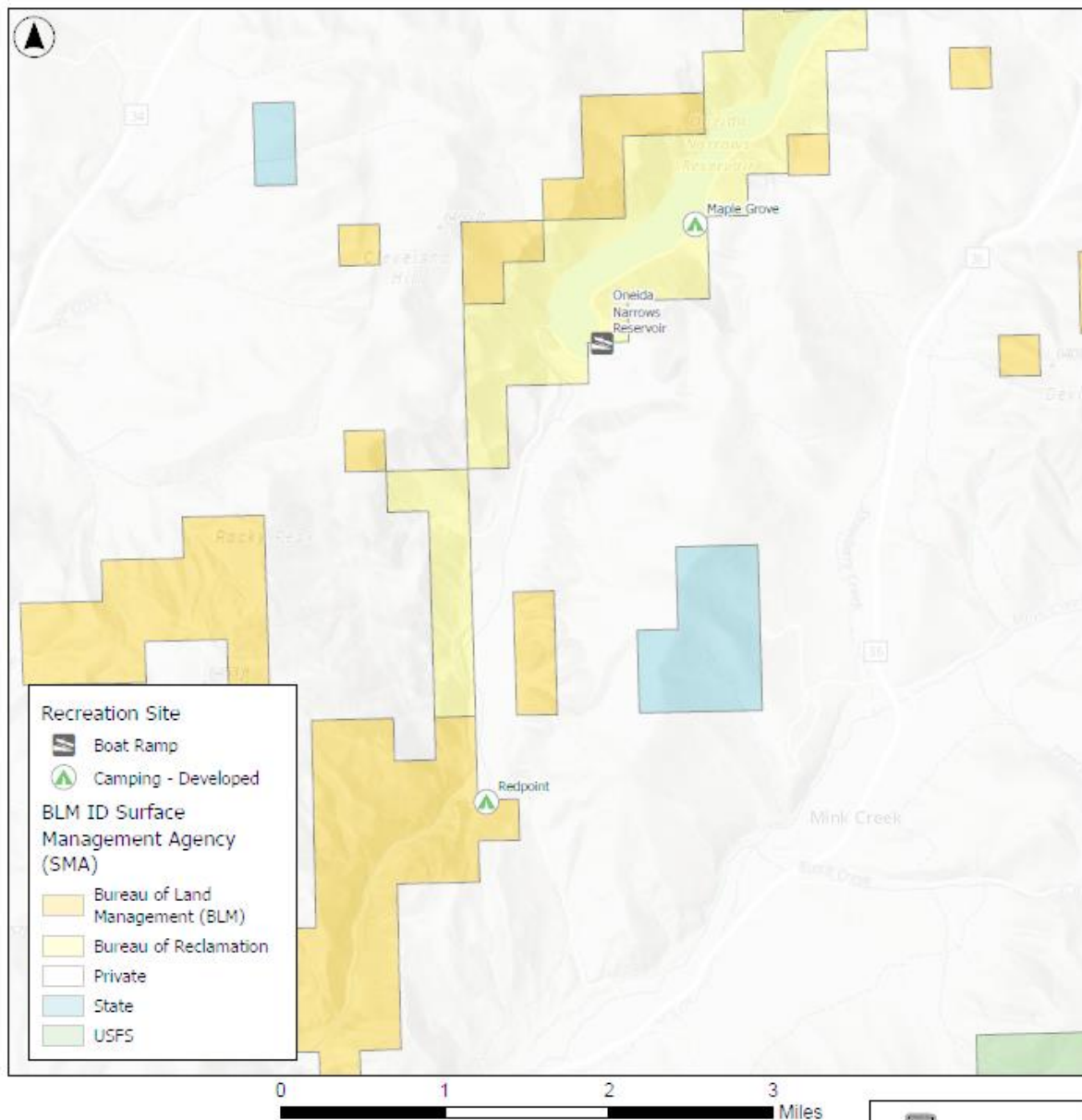
motorized boating (i.e. kayaks, rafts, float tubes, standup paddle boards, etc.), swimming, wildlife viewing, and hunting opportunities. PacifiCorp only allows day-use along the river, which in turn makes the Redpoint Campground a very popular destination for camping.

Redpoint Campground has an annual fee season from May 15<sup>th</sup> – September 15<sup>th</sup>. There are 10 developed expanded amenity camp sites, along with an accessible fishing platform to fish the Bear River within the campground. An accessible double vaulted restroom is available and centrally located in the campground with two refuse trash containers. Each site has a parking pad, picnic table, and fire ring. The campground also has a free day-use area, day-use hours are from 7:00AM – 10:00PM. There is a self-pay station available for overnight camping, campground rules and regulations are posted on the kiosk (see Table 1 for the existing fee structure), permit is valid until 2:00PM last day of stay and quiet hours are from 10:00PM – 7:00AM. There is no potable water and no electrical hook-ups at the campground.

The campground was developed into a fee site in 2010 with proceeds from the American Recovery and Reinvestment Act (ARRA) of 2009. The ARRA funds paid for a new double vault toilet, the infrastructure for the 10 individual campsites, post and cable barriers to delineate parking areas, picnic tables and fire rings, the iron ranger self-pay station, and an accessible campsite. The PFO has seen increased use at Redpoint Campground in recent years (see Table 2 for estimated number of visits). The PFO is in the process of implementing Recreation.gov and Scan & Pay to allow users to reserve sites and utilize e-commerce for an easier option to pay fees.



# Maple Grove and Redpoint Campgrounds



BLM Pocatello Field Office  
4350 Cliffs Drive  
Pocatello, Idaho 83204  
Date: 5 August 2024



NO WARRANTY IS MADE BY THE BUREAU OF LAND MANAGEMENT. THE ACCURACY, RELIABILITY, OR COMPLETENESS OF THESE DATA FOR INDIVIDUAL USE OR AGGREGATE USE WITH OTHER DATA IS NOT GUARANTEED.

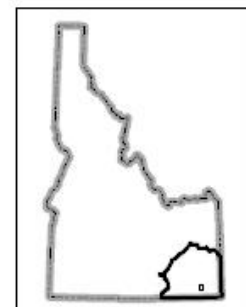


Image 5. Maple Grove and Redpoint Campground Map

## Pipeline Campground



*Image 6. Pipeline Campground, located along the Snake River (BLM Photo)*

Pipeline Campground is proposed as a new fee site. The site is located along the Snake River just 3 miles west of American Falls, Idaho. This campground is a very popular spot for recreationists interested in fishing and camping. The concrete boat ramp, with two new boat docks, offers a wonderful place to launch motorized and non-motorized boats onto the Snake River just below the American Falls Dam. It also

sees heavy traffic from travelers coming through the area, with it being located just off Interstate 86. As a low-lying BLM campground with easy access, it can offer almost year-round access to the river for hunting and fishing. The campground currently offers eight campsites (each equipped with a picnic table and fire ring), double lane paved boat ramp, designated boat trailer parking, well maintained gravel access road, one single vault toilet that is ADA accessible with associated parking, a life-jacket loaner station, law enforcement patrols conducted regularly by both BLM law enforcement and local Power County Sheriff's Department, and kiosks with rules and regulations posted. With its well-known fishing opportunities for trout, smallmouth bass, and sturgeon, anglers from all over come to utilize the campground and its amenities. Pipeline Campground meets the requirements under FLREA for charging an expanded amenity fee for overnight camping and a standard amenity fee for day-use. No potable water is available.

The BLM PFO has received an application and is in the process of issuing Intermountain Gas Company a permit to bore a new natural gas line under the Snake River and remove the current pipeline that extends over the river at the campground. The new pipeline should be completed by summer 2026. Once this project is complete, the PFO is considering making improvements and expansions to the campground. This may consist of upgraded parking, adding more RV and tent campsites, adding shade shelters for both day-use and overnight campers, and the possibility of having power hook-ups installed at each designated campsite. To fund this project, the PFO will try utilizing the IDPR Grant program. Each IDPR grant does require an in-kind match. Implementing a fee at the Pipeline campground would assist offsetting the in-kind match and allow the PFO to upgrade and expand its amenities to improve the public experience. The PFO will use e-commerce technologies, including the current Recreation.gov Scan & Pay system, to collect all Recreation Use Permits (RUPs) at Pipeline Campground. This approach

supports the Bureau's direction to reduce cash handling and enhance fee collection efficiency.

## Pipeline Campground

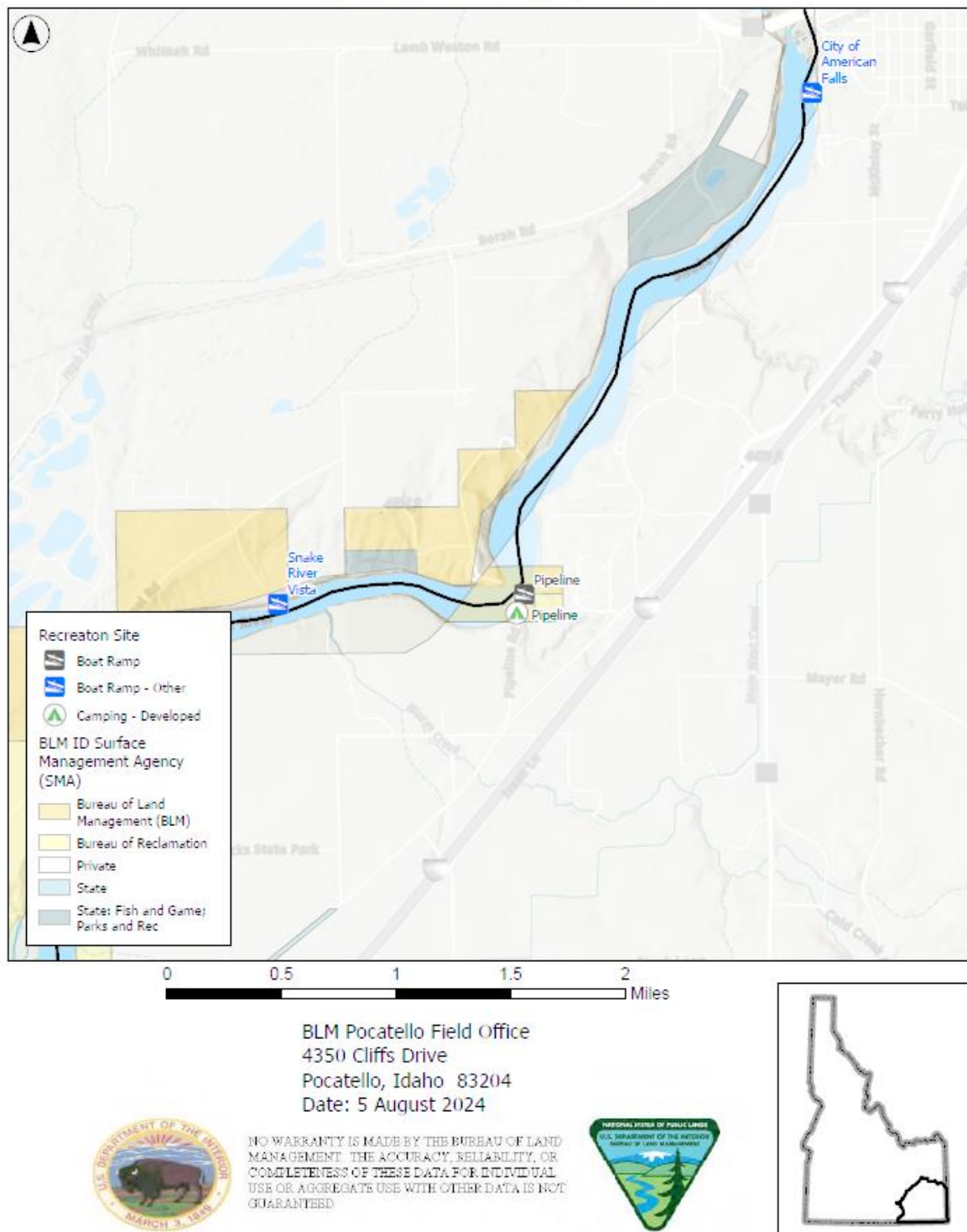


Image 7. Pipeline Campground Map



## Recreation Expanded Amenity E-commerce Fee Rates

The PFO will use various e-commerce technologies as directed in BLM Instruction Memorandum 2022-010, to provide recreation visitors opportunities to find, reserve and pay for campsites and day use within the field office. Most of these options are provided through the interagency reservation service Recreation.gov. If the PFO decides to add reservation services or other types of e-commerce options available in the future, an expanded amenity fee for reservation services would be charged in addition to any other standard or expanded amenity fees in accordance with 16 U.S.C. 6802(g)(2)(G).

The reservation service is subject to contracting requirements and will be adjusted with contract changes or with future updates to the business plan. For visitors who wish not to pay the expanded amenity fee of reservation services, the field office will attempt to continue to provide a blend of reservation and first come, first served options unless the office moves the fee site/area entirely to e-commerce. Other payment options may also be considered in the future as technology and software develops, such as onsite credit card payment systems.

## Operating Costs

The PFO expends considerable resources in managing the recreation fee sites program. The primary goal is to provide high-quality recreation opportunities and experiences for all visitors. Cleanliness and visitor satisfaction are key components to providing those opportunities and experiences. The following is a list of priority expenditures needed to operate and maintain these recreation sites:

- Service contracts for garbage collection, vault toilet and RV dump station pumping, water testing, and road maintenance.
- Supplies including but not limited to cleaning supplies, toilet paper, hand sanitizer, fuel for motorized equipment, paint, lumber, etc.
- Maintain, improve, and replace recreation site infrastructure such as signage, fencing, fire rings, picnic tables, restroom buildings, informational kiosks, etc.
- Government work vehicles, pressure sprayers, mowers, trimmers, trailers, etc.
- Maps, brochure reprints, and interpretive materials.
- Construction and expansion of additional recreation facilities.

During the peak season (May – September), the BLM staff (Maintenance Worker, Outdoor Recreation Planner, Park Rangers) cover most of the maintenance needs for all four recreation sites. On average, the staff must visit the fee sites at least twice a week to perform maintenance duties. There are camp hosts present at the three current fee sites from May 15 – September 15 to provide public assistance and oversight of the campgrounds.

The annual operating costs associated with the current three recreation fee sites averaged \$36,561 over the past four years, with trends showing a substantial increase as the cost of living also increased. Table 3 is a breakdown of all the costs associated

with operating the PFO recreation fee sites in the past four years and projected costs of fiscal year (FY) 2025. These expenditures represent expenses of a typical year, although some years may be higher due to unforeseen circumstances. Beginning in FY 2024, the newly created Strategic Recreation Fund account (administered by the BLM Idaho State Office) assesses 15% of the annual fee revenues from each field office across Idaho. This account is utilized to fund various projects across the state. In the table below \$15,000 is shown for planned labor. Labor expenses represent one of the major contributors to expenditures at the recreation fee sites, but with hiring difficulties for maintenance and park ranger staff, BLM labor expenses were lower than projected over the last few years. Due to a government-wide hiring freeze in FY 2025, the PFO has been unable to onboard seasonal staff. As a result, labor expenditures have remained lower than projected. Once the hiring freeze is lifted and the PFO reaches full staffing capacity, planned labor costs are expected to rise accordingly.

*Table 3. Past 4 years costs of recreation fee site expenditures.*

Expenditure	FY21 Amount	FY22 Amount	FY23 Amount	FY24 Amount	FY25 Planned
Labor – Maintenance Worker (1 month) and Park Ranger (4 months).	\$15,000 (planned average)				
Camp Host Reimbursement	\$7,000 (planned average, included in Visitor Services)				
Actual					
Routine and Annual Maintenance – Toilet pumping, garbage collection, potable water testing, mowing, etc.	\$16,141.75	\$14,887.54	\$10,198.19	\$12,119.31	\$20,000.00
Labor	\$9,542.00	\$4,426.00	\$11,597.00	\$22,625.00	\$15,000.00
Visitor Services / Camp Host Reimbursement	\$10,149.16	\$6,252.92	\$7,810.05	\$8,504.62	\$14,000.00
Strategic Recreation Fund – State Office Assessment				\$11,990.76	\$6,441.00
Totals:	\$35,832.91	\$25,566.46	\$29,605.24	\$55,239.69	\$55,441.00

### *Pipeline Campground*

The PFO anticipates spending approximately \$7,000 each year to operate and maintain Pipeline Campground, which includes staff salary, vehicles, fuel, maintenance tools, toilet pumping, and supplies to maintain the campground. The cost of fee collection at this site will be less than \$1,000 annually with all fee collections taking place on Recreation.gov, reducing the amount of staff time needed for collection and counting of fees. At this time, the PFO does not plan to staff a camp host. With recreation staff and law enforcement making multiple weekly patrols and with the assistance of daily

checks from Power County Waterways staff, the PFO anticipates a reduction of operating costs associated with staffing a camp host.

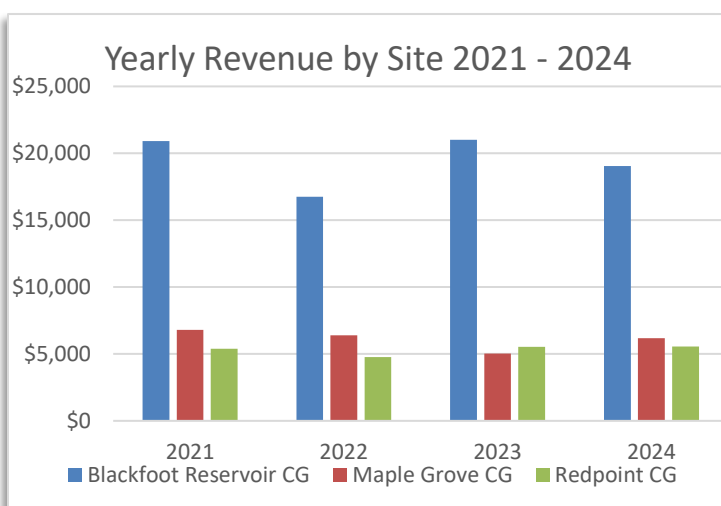
## Revenues

Visitors camping overnight at the three fee campgrounds within the PFO are required to obtain a Recreation Use Permit (RUP) fee envelope at the self-service fee stations located at each campground. BLM is in the process of adding reservation and Scan & Pay features on Recreation.gov to obtain a RUP. Visitors at Blackfoot Reservoir Campground can purchase an annual day-use pass at the PFO office or through Recreation.gov. The fee season at all three current fee sites is May 15<sup>th</sup> to September 15<sup>th</sup>, annually. America the Beautiful Senior and/or Disability Access Passes are accepted, providing a 50% discount on overnight camping fees and a 100% discount on standard amenity day-use fees.

Pipeline Campground overnight camping and day-use passes will be available through the Scan & Pay feature on Recreation.gov to obtain a RUP. Annual day-use passes will be available through the PFO office for day-use and/or boat ramp access. The PFO will establish the annual fee season from April 15<sup>th</sup> – October 15<sup>th</sup>. The Interagency Senior and Access Passes will be accepted, providing a 50% discount on camping and day-use fees.

The estimated revenues for Pipeline Campground are based on a 50% occupancy in the campground for overnight camping and an average of 4 day-use passes per day from April 15<sup>th</sup> – October 15<sup>th</sup> (183 days). It is estimated that revenues for Pipeline Campground would be \$7,320 in camping and \$3,660 in day-use, for a combined total of \$10,980 of estimated revenue.

*Table 4. Yearly revenue by site 2021-2024*



*Table 5. Yearly revenue combined*

Year	Revenue
2021	\$33,107.67
2022	\$27,915.44
2023	\$31,567.12
2024	\$30,804.73
<b>Average</b>	<b>\$30,848.74</b>

The current average annual revenue for the three PFO fee campgrounds is \$30,848.74 (based on the latest 4-yr average). If the proposed fee increases for the campgrounds

are implemented, it will increase the campground yearly revenue to an estimated \$55,847 (see Table 6).

*Table 6. Current 4-yr average versus estimated proposed revenues.*

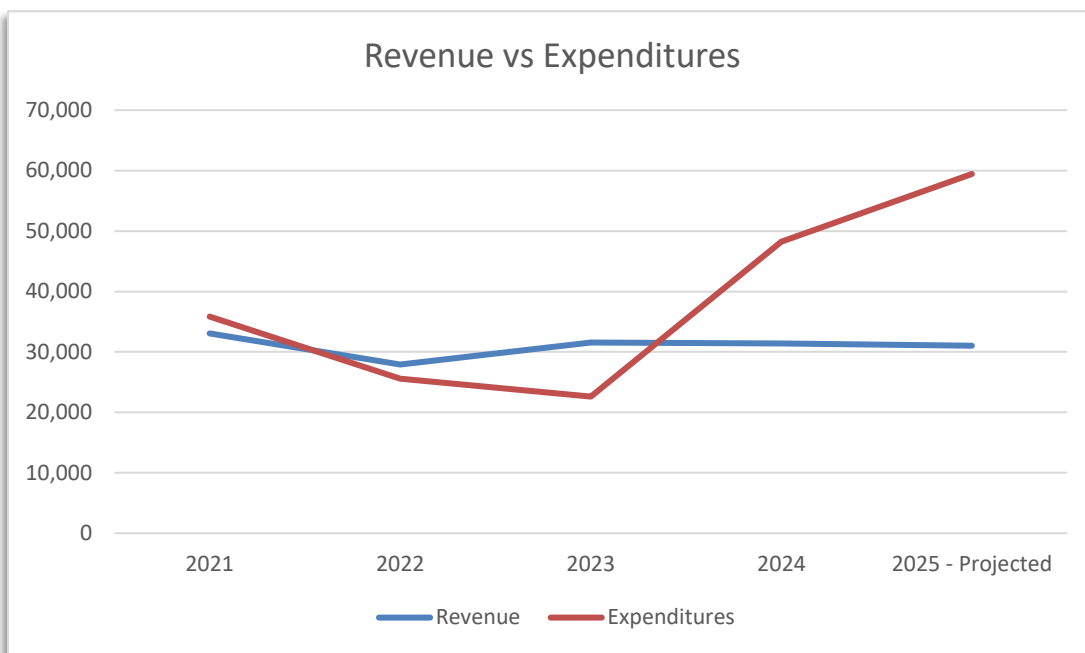
<b>Recreation Site</b>	<b>Current</b>	<b>Proposed</b>
Blackfoot Reservoir Campground	\$19,434	\$29,184
Maple Grove Campground	\$6,101	\$8,346
Redpoint Campground	\$5,312	\$7,337
Pipeline Campground	N/A	\$10,980
<b>Totals</b>	<b>\$30,847.00</b>	<b>\$55,847.00</b>

## Expenditures and Planned Future Projects

Normal campground annual operation and maintenance funding will come from base appropriated budget sources, plus be supplemented with recreational fee revenues. Operations and maintenance are the main expenditures of recreation fee revenue. Specific operation and maintenance costs were included above in the operating cost section of this business plan and are anticipated to steadily increase, with associated costs averaging \$36,561 over the last four years.

The amount needed from fee revenue every year varies depending on appropriated budget, permanent staffing, number of summer seasonal park rangers hired, and can fluctuate due to unforeseen circumstances. The expenditures chart below (*Table 7*) is for base annual maintenance and operations for the current three recreation fee sites and do not include any significant improvements, upgrades, or larger deferred maintenance projects.

Table 7. Yearly Revenues and Expenditures 2021-2024 for the current three recreation fee sites



With the expenditures chart above trending above the revenue earned at the three current fee sites, only minor projects and upgrades have been considered. Future expenditure's will assist in maintaining the three fee sites for proper use levels and consistent with guidance of FLREA. Expansion projects will be determined on visitor use levels and expectations and considered through availability of outside funding sources, such as grants through the IDPR.

Current revenues received from the three fee sites will be utilized primarily for maintaining the sites and not for expansions. The proposed fee changes would increase annual revenue from \$30,847 to \$55,847 an increase of \$25,000 which can be applied to current/future operating expenditures and planned future projects.

Planned future projects for Pipeline Campground may include upgrades such as upgraded parking, increasing RV and tent camp sites, adding shade shelters for both day-use and overnight campers, and the possibility of having power hook-ups installed to each designated campsite. Charging fees will increase revenue and assist in being able to maintain, expand, and improve facilities at the Pipeline Campground.

## Fair Market Analysis and Fee Calculation

The PFO determined the new proposed expanded amenity fees for the existing three recreation fee sites by comparing the BLM facilities to other facilities offering similar recreation activities, access, services, and amenities in Southeastern Idaho. These include facilities managed by adjacent United States Forest Service (USFS) counterparts and privately operated campgrounds available to the public within the area.

Table 8. Comparable campground market analysis for the three existing fee sites

Campground	Agency	Location	RV-Hookups	Fee
Scout Mountain	USFS	13 miles south of Pocatello	No	\$20/\$40
Big Springs	USFS	16 miles north of Lava Hot Springs	No	\$20/\$40
Malad Summit	USFS	14 miles N of Malad	No	\$20/\$40
Albert Moser	USFS	9 miles E of Preston	No	\$17/\$32
Montpelier Canyon	USFS	33 miles S of Soda Springs	No	\$13
Paris Springs	USFS	20 miles W from Bear Lake	No	\$17/\$32
Cedar Bay Marina, RV, & Cafe	Private	20 miles N of Soda Springs On Blackfoot Reservoir	Yes No	\$55 \$35
Maple Grove Hot Springs	Private	20 miles NE of Preston On Oneida Narrows Reservoir	No	\$85/\$90
Mary's Campground	Private	1 mile W of Lava Hot Springs	Yes	\$50-\$95
Cub River RV Park	Private	13 miles NE of Preston	Yes No	\$50-\$70 \$20-\$25
Downata Hot Springs Resort	Private	25 miles NW of Preston	Yes No	\$45-\$60 \$35
Bear Lake North RV Park & Campground	Private	18 miles N of Montpelier	Yes	\$59-\$99

The comparison camping rates listed above in Table 8 are for both basic campsites (i.e., no RV hookups) and campsites with water and power (i.e., RV hookups), as well as access to picnic tables, fire rings, barbecue grates, and vault restrooms. These campgrounds were chosen for comparison because they are the geographically closest campgrounds available to the public with similar amenities to the BLM PFO recreation fee sites.

Private campgrounds were included on the list above to illustrate the range of camping rates in the area; however, they were not used in determining the BLM PFO fee rates. Private facilities typically offer a broader range of amenities and services compared to BLM managed sites. In alignment with the BLM recreation fee policy and FLREA, BLM fee rates are set to ensure public access to affordable, resource-based recreation opportunities while maintaining fairness and consistency with similar public facilities in the area.

The PFO proposed fee rates of \$20/night for full hookups in the fully developed campsites and \$10/night in the standard campsites at Blackfoot Reservoir Campground, and \$15/night for the campsites at Maple Grove and Redpoint Campgrounds would be considered a fair value.



## Pipeline Campground

The PFO used a different comparison chart for Pipeline Campground because of its geographically location and amenities. The recreation waterfront sites offering similar amenities are listed below in Table 9, which are managed by adjacent BLM field offices, Idaho Department of Parks and Recreation (IDPR), Bingham County, and Private Entities.

*Table 9. Comparable campground and boat ramp amenity and fee comparison for Pipeline Campground*

<b>Facility</b>	<b>Agency</b>	<b>Location</b>	<b>Amenities</b>	<b>Fee</b>
West Magic Reservoir	BLM	30 miles N of Shoshone, ID	Lake access, boat ramp, gravel roads, vault toilet, life-jacket station.	\$10 day-use \$75 annual pass
Milner Historic Rec Area	BLM	12 miles W of Burley, ID	River access, boat ramp, fire rings, picnic tables, paved roads, vault toilets, trash, shade shelters.	\$5 day-use \$50 annual-pass \$15 campsite
Lud Drexler Park	BLM	36 miles SW of Twin Falls, ID	Boat ramp, gravel parking, vault toilet, picnic area, hiking trail.	\$5 day-use \$50 annual pass \$15 campsite
Lake Walcott	IDPR	30 miles W of American Falls, ID	River access, boat ramp, restrooms, picnic tables, fire rings, paved roads, dump station, visitor center.	\$7 day-use \$14 - \$28 basic/full hookup campsites
Massacre Rocks	IDPR	12 miles W of American Falls, ID	River access, boat ramp, restrooms, picnic tables, fire rings, paved roads, dump station, visitor center	\$7 day-use \$21 - \$33 basic/electric hookup campsites
Willow Bay Marina	Private	In American Falls, ID	Lake access, boat ramp, restrooms, laundry, fire rings, paved roads, store	\$5 day-use \$55 full hookup campsite
Seagull Bay	Private	8 miles NE of American Falls, ID	Lake access, boat ramp, restrooms, paved and gravel roads	\$5 day-use \$16 - \$38 basic/full hookup campsites
Sportsmans Park	Bingham County	18 miles N of American Falls, ID	Lake access, boat ramp, restrooms, picnic tables, fire rings, shade shelters, paved and graveled roads	\$15 - \$25 tent campsite/full hookup campsites

The PFO proposed fees of \$10/night camping and \$5/day for day-use at Pipeline Campground would be considered a fair value.

## Impacts of Fee Adjustment and Rationale

The purpose of the BLM recreation fee program is not to maximize revenue but to help protect natural resources, provide for public health and safety, and facilitate access and opportunities to public lands and waters. BLM Manual 2930 – Recreation Permits and Fees outlines that fees should be balanced and affordable for all members of the public, rather than an impediment. Recreation fees are also generally considered a way to ensure that those who actively utilize recreational opportunities on BLM managed lands make a reasonable contribution towards protecting, maintaining, and enhancing those opportunities.

The intent of the PFO Recreation Fee Sites fee proposal is to promote and maintain self-sustaining recreation sites. The fees proposed would offset the anticipated operating costs associated with the recreation fee sites and would then meet the desired goal of being self-sustained. This would help ensure consistent levels of service and reduce environmental degradation caused by unmanaged or underfunded use.

To keep up with rising management and maintenance costs, the PFO will lean on the average annual Western U.S. Consumer Price Index (CPI) to allow for a single CPI-based increase of up to 10% once the Western U.S. CPI increases by 20% from the base year (when fees are first charged). Any subsequent fee adjustments, regardless of CPI growth, must go through the public participation process, including BLM Idaho Resource Advisory Council (RAC) engagement if required. This ensures the proposal remains compliant with FLREA and consistent with BLM guidance.

## Positive Impacts of Adopting Proposed Fees

Quality recreational opportunities and experiences are highly valued throughout the state of Idaho, from Idaho locals to the millions of tourists visiting each year.

Recreational opportunities such as camping, hiking, hunting, fishing, mountain biking, site-seeing, boating, off-highway vehicle experiences, and winter sports are some of the most sought-after experiences and hobbies throughout the state.

The PFO has seen a large increase in visitor use since 2020 and expects the demand for camping and associated recreation activities on public lands to continue to increase in the future. As visitation increases, so do the maintenance needs, which raises operating costs at the campgrounds addressed in this business plan. Implementing the fee proposal would have a positive impact and improve the overall quality of visitor experience by supporting more campground maintenance needs, amenities, and recreation staff presence.

It is imperative to the local economy to keep the recreation fee sites in clean operational conditions. Public visitors coming to utilize the campgrounds infuse a steady stream of financial resources to the local surrounding economies. Visitors will stop to shop for a

variety of goods and fuel from local vendors. If the campgrounds and amenities they offer are not maintained to the highest standards, this could lead to human health and safety issues. Substandard amenities could also lead to a drastic decline in tourist numbers. Maintaining high recreation standards and creating new opportunities improve the overall visitor experience and boost the local economy.

Implementing the proposed fees would give the PFO more flexibility when dealing with maintenance and operating costs at fee sites, freeing management from being solely dependent on appropriated funding. If the proposed fee increases were adopted, current services would continue to be conducted with high standards and new projects could be implemented as needed, improving the overall visitor experience.

### Impacts of Not Adopting Proposed Fees

Existing facilities represent a substantial public investment. Without fees visitors could expect to see a loss of functionality and use of these facilities as maintenance capacity will be reduced due to insufficient funding or staffing. As costs are anticipated to increase, maintenance might not happen as quickly or as often as needed, and some services might be reduced. A decline in these services could lead to increased risk to public health and safety.

If fees are not charged the costs to operate and maintain the proposed fee sites would continue to rely on fluctuating appropriated funding and therefore might face challenges implementing the BLM's recreation strategy. As mentioned earlier, not implementing the proposed fees could lead to limited cleaning and maintenance services at the sites. If sites are not appealing to visitors, they might stop recreating in this region, thereby affecting the local economy.

### Prohibitions on Charging FLREA Fees

Section 803(d) of FLREA provides that standard or expanded amenity recreation fees shall not be charged (shortened list): solely for parking, undesignated parking, or picnicking along roads or trails, general access, low investment sites or areas, persons moving through without using the facilities or services, for camping at undeveloped sites that do not provide a minimum number of facilities or services (see Background and Authorities section), use of overlooks or scenic pullouts, any person engaged in the conduct of official Federal, State, Tribal, or local government business, special attention or extra services necessary to meet the needs of the disabled, any person under 16 years of age, and outings conducted for noncommercial educational purposes by schools or bona fide academic institutions. Fees will not be charged for any tribal members who have a right of access for hunting, fishing, and gathering privileges under the specific provision of law or treaty.

### Fee Discounts

Section 805 of FLREA provided for the establishment of a single interagency national pass, known as the "America the Beautiful – the National Parks and Federal Recreational Lands Pass," which provides the bearer full coverage of standard amenity

fees and holders of the Interagency Senior and Access Passes a 50 percent discount on some expanded amenity fees. The national interagency Senior and Access Passes replaced the Golden Age and Access Passports in 2007; the BLM continues to honor these passes. No discount is allowed for expanded amenity group use sites, shelters, yurts or cabins.

## Public Outreach

Public Communication and Marketing Plans:

- Public notice of the proposed fee system, including fee details and calling for public comments, will be posted at the recreation sites included in this business plan and at the PFO.
- An announcement detailing the fee proposal and calling for public comments will be issued to all local newspapers and posted on BLM social media.
- The business plan will be published on the BLM website with links to submit comments.  
<https://www.blm.gov/programs/recreation/permits-and-fees/business-plans>
- A notice of new Recreation Fee Area, will be published in the Federal Register.

The PFO will present the Pocatello Field Office Recreation Fee Sites Business Plan to the BLM Idaho Resource Advisory Council (RAC) for advice, feedback, and recommendations in August 2025. FLREA mandates that the appropriate RAC be consulted and given the opportunity to provide recommendations to the BLM for all recreation fee proposals prior to implementation. Comments received from the public and the BLM Idaho RAC will be considered prior to implementation of the fee proposal.

## Feedback Mechanisms

The BLM will provide a 30-day minimum public review period during which the public will have the opportunity to learn about the proposal and to submit comments for consideration.

The public may submit comments on the proposed use fees changes utilizing the following methods:

- Email to: [blm\\_id\\_po\\_recreation@blm.gov](mailto:blm_id_po_recreation@blm.gov)
- U.S. Postal Mail to: BLM Pocatello Field Office, 4350 Cliffs Drive, Pocatello, ID 83204