

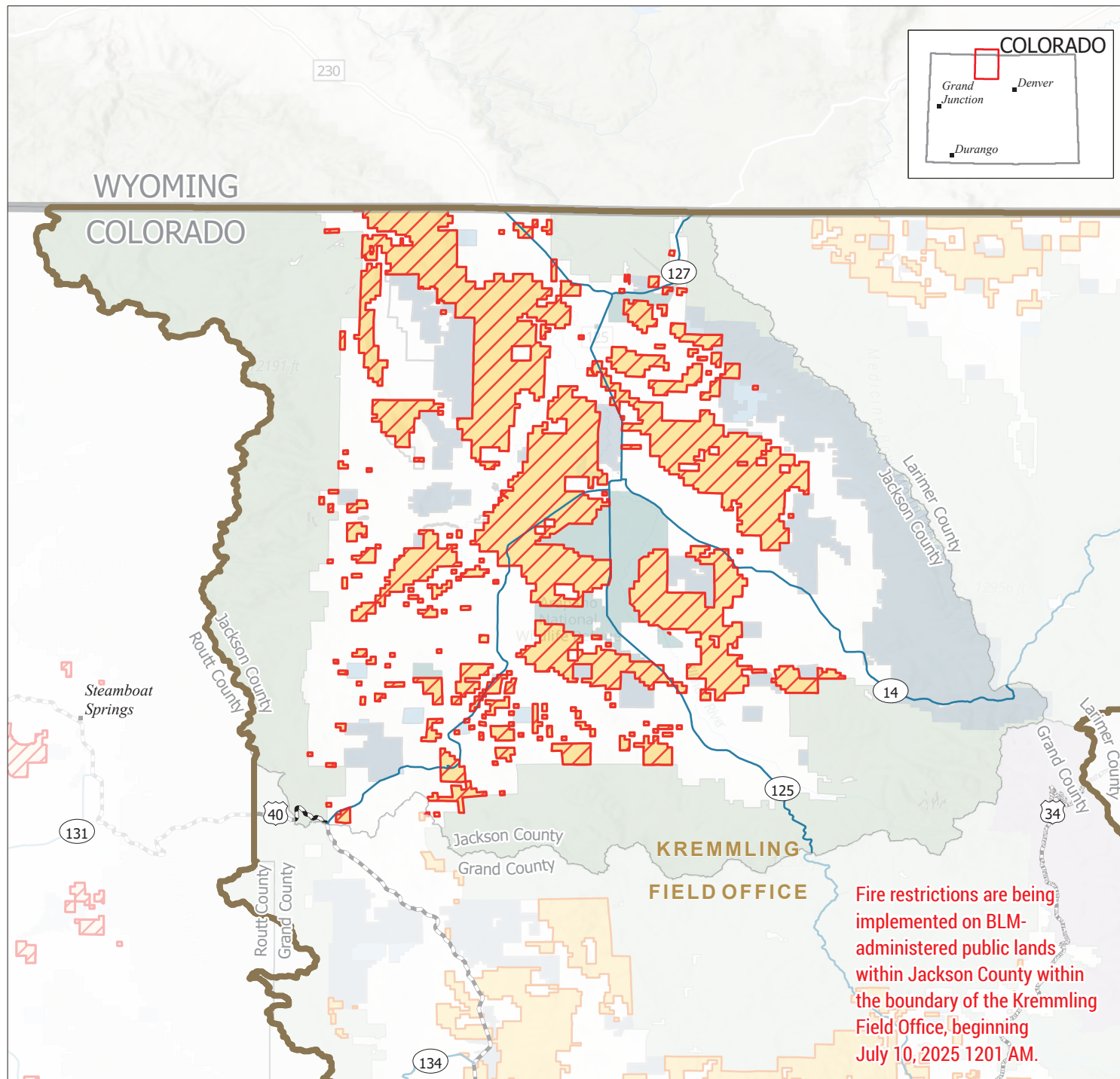


Kremmling Field Office

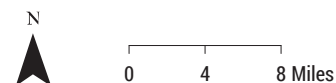
BLM Lands Under Stage 1 Fire Restriction in Jackson County

Bureau of Land Management
Kremmling Field Office
2103 Park Ave
Kremmling, CO 80459
970-724-3000

7/9/2025



- | | |
|---|------------------------------|
| Kremmling Field Office Boundary | National Park Service |
| Office under Stage 1 Fire Restriction in Jackson County | Private |
| Bureau of Land Management | State |
| State, County, City: Areas | US Forest Service |
| | US Fish and Wildlife Service |



No warranty is made by the Bureau of Land Management as to the accuracy, reliability, or completeness of this map or the data displayed for individual use or aggregate use with other data.