



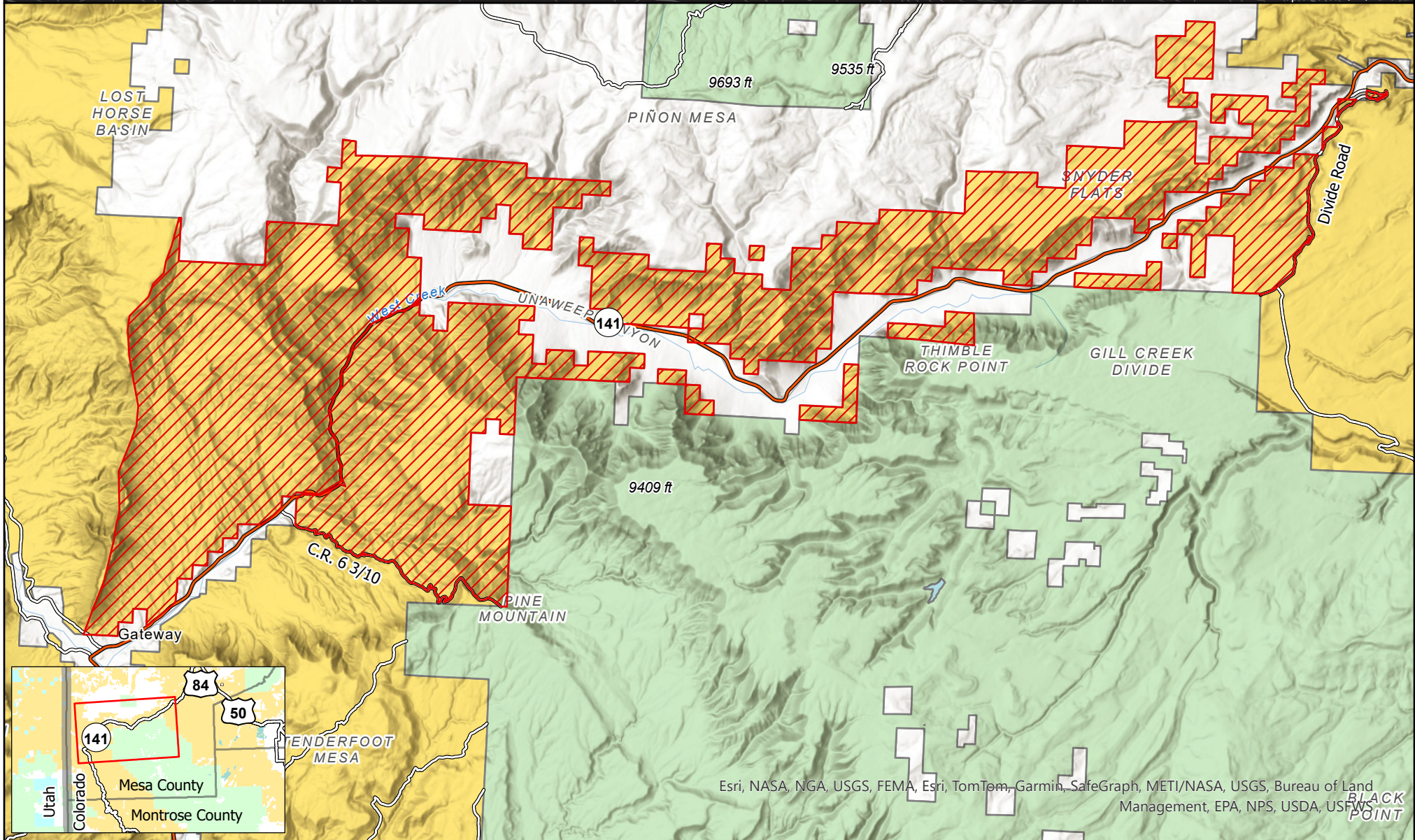
Turner Gulch Fire Area Closure

Bureau of Land Management Temporary Closure Due to Fire Activity

Bureau of Land Management
Grand Junction Field Office
2815 H Road
Grand Junction, CO 81506
970-244-3000

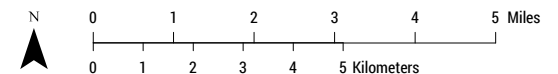


Map Created: 7/17/2025



Esri, NASA, NGA, USGS, FEMA, Esri, TomTom, Garmin, SafeGraph, METI/NASA, USGS, Bureau of Land Management, EPA, NPS, USDA, USFWS

- Turner Gulch Fire Area Closure
- Bureau of Land Management
- State
- State and US Highways
- Private
- US Forest Service
- County Roads



No warranty is made by the Bureau of Land Management as to the accuracy, reliability, or completeness of this map or the data displayed for individual use or aggregate use with other data.