

Tanana River (Portion Applying For in RDI)

This map is based on the most recent data available; however the actual and/or historical location of the waters involved may differ from that shown on this map due to the changes in the waters over time.

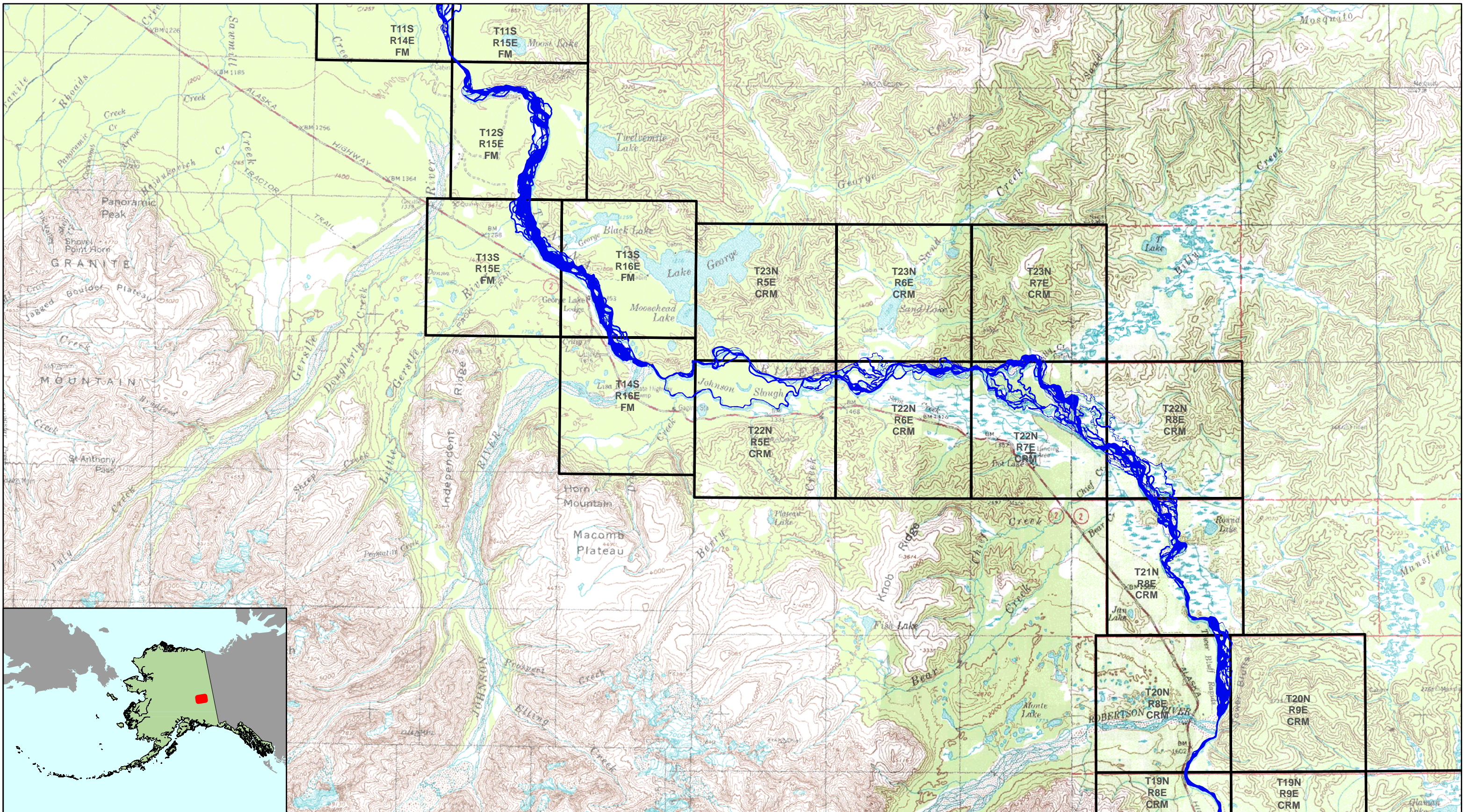
The State of Alaska makes no expressed or implied warranties (including warranties of merchantability and fitness) with respect to the character, function, or capabilities of this product or its appropriateness for any user's purposes. In no event will the State of Alaska be liable for any incidental, indirect, special, consequential or other damages suffered by the user or any other person or entity whether from use of the product, any failure thereof or otherwise, and in no event will the State of Alaska's liability to you or anyone else exceed the fee paid for the product.

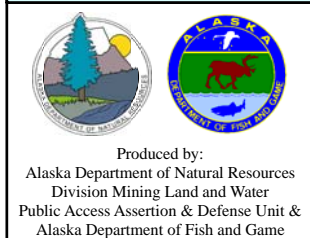
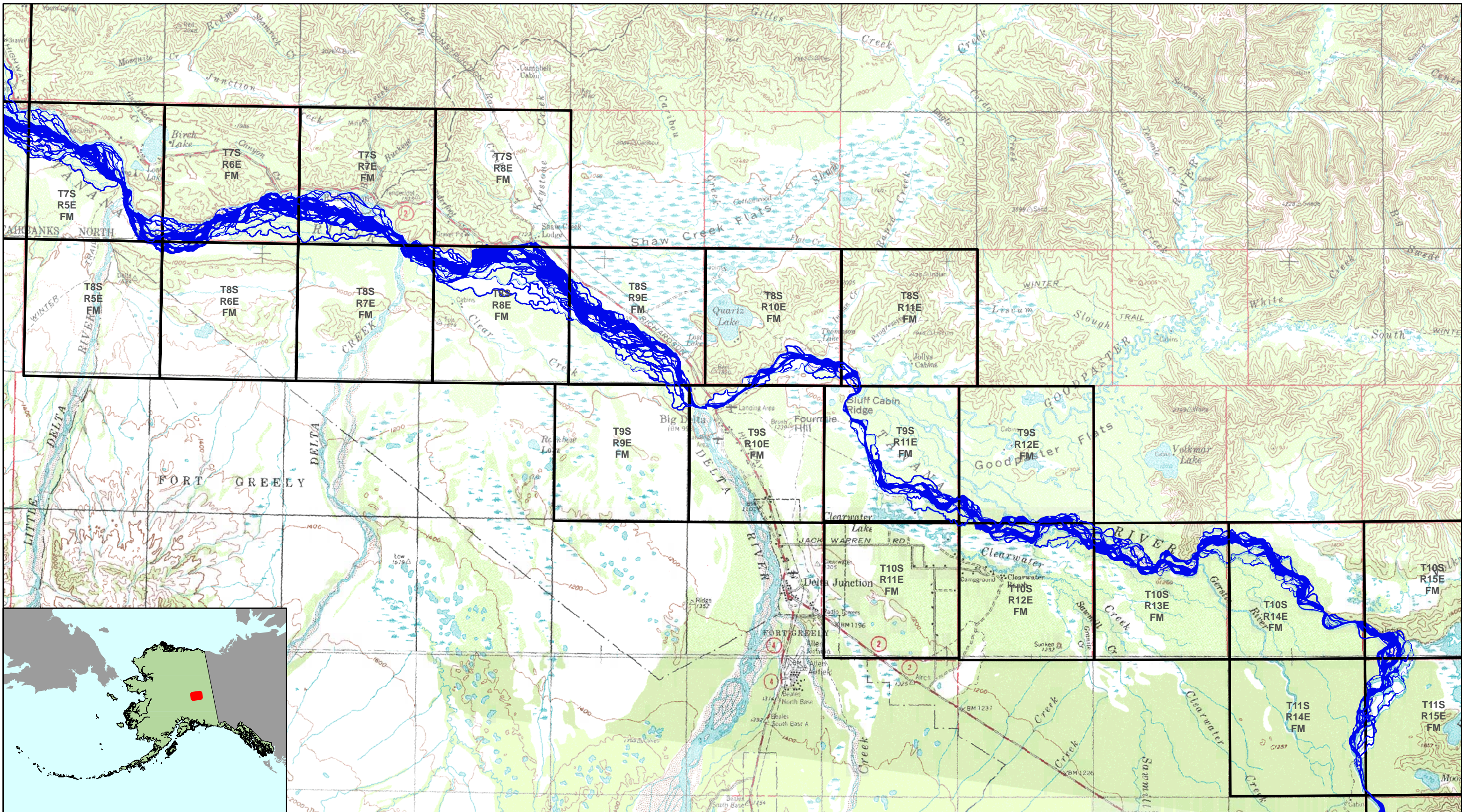
0 1.5 3 6 9 12 Miles

1:250,000

BASE MAP: USGS Tanacross, AK 1:250,000 Topographic Map
WATERBODY DATA: USGS National Hydrography Dataset - 2004
MAP PROJECTION: Albers Equal Area North American Datum 1983
Fairbanks Meridian
Date Printed: March 10, 2006

~State of Alaska~
Recordable Disclaimer of Interest
Application
Tanana River
Map: 1 of 6





Tanana River (Portion Applying For in RDI)

This map is based on the most recent data available; however the actual and/or historical location of the waters involved may differ from that shown on this map due to the changes in the waters over time.

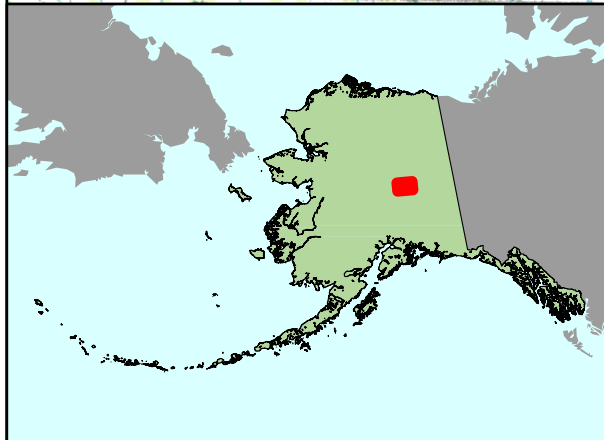
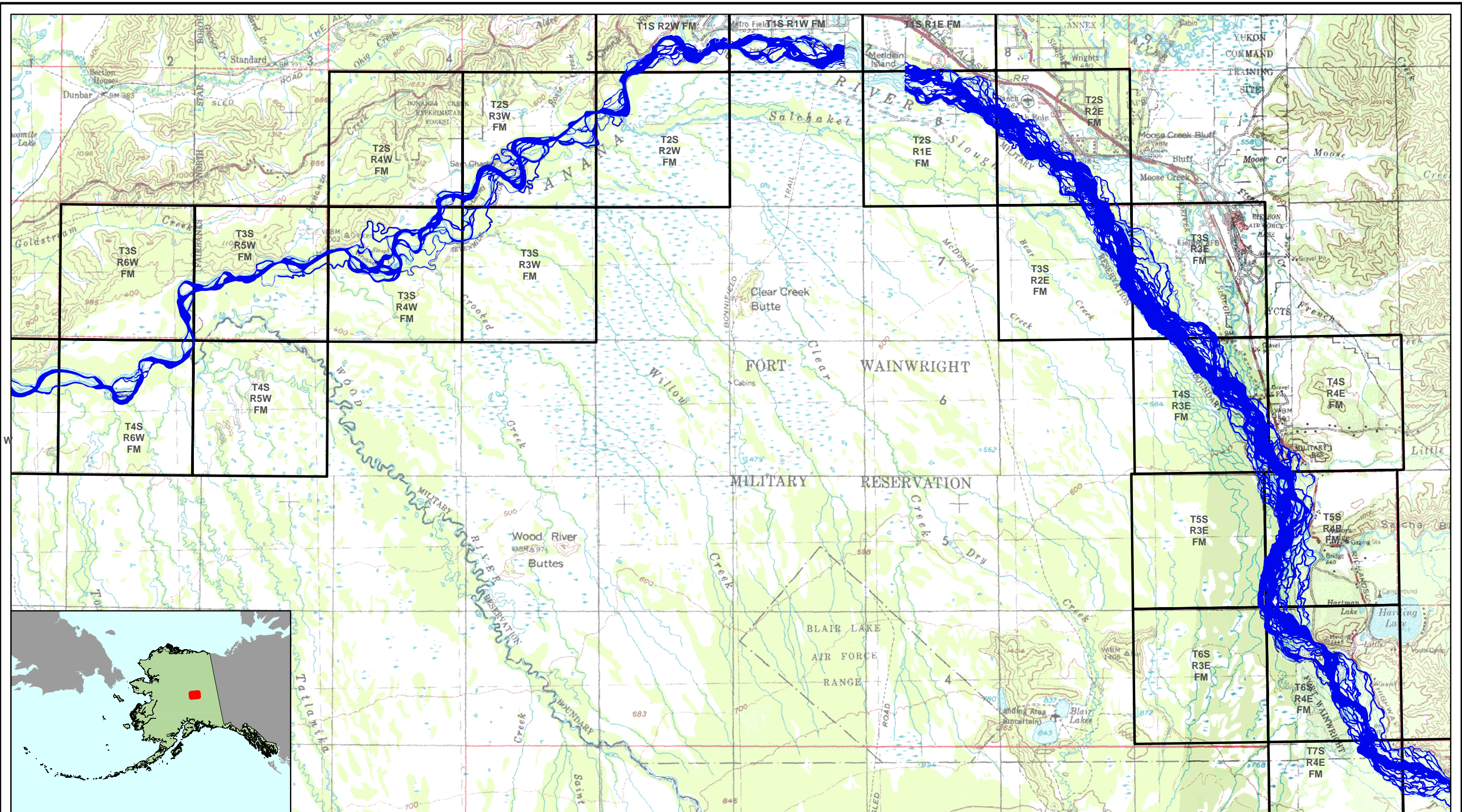
The State of Alaska makes no expressed or implied warranties (including warranties of merchantability and fitness) with respect to the character, function, or capabilities of this product or its appropriateness for any user's purposes. In no event will the State of Alaska be liable for any incidental, indirect, special, consequential or other damages suffered by the user or any other person or entity whether from use of the product, any failure thereof or otherwise, and in no event will the State of Alaska's liability to you or anyone else exceed the fee paid for the product.

0 1.5 3 6 9 12 Miles

1:250,000

BASE MAP: USGS Big Delta & Mt. Hayes, AK 1:250,000 Topographic Maps
WATERBODY DATA: USGS National Hydrography Dataset - 2004
MAP PROJECTION: Albers Equal Area North American Datum 1983
Fairbanks Meridian
Date Printed: March 10, 2006

~State of Alaska~
Recordable Disclaimer of Interest
Application
Tanana River
Map: 3 of 6



Tanana River (Portion Applying For in RDI)

This map is based on the most recent data available; however the actual and/or historical location of the waters involved may differ from that shown on this map due to the changes in the waters over time.

The State of Alaska makes no expressed or implied warranties (including warranties of merchantability and fitness) with respect to the character, function, or capabilities of this product or its appropriateness for any user's purposes. In no event will the State of Alaska be liable for any incidental, indirect, special, consequential or other damages suffered by the user or any other person or entity whether from use of the product, any failure thereof or otherwise, and in no event will the State of Alaska's liability to you or anyone else exceed the fee paid for the product.

0 1.5 3 6 9 12 Miles

1:250,000

BASE MAP: USGS Big Delta & Fairbanks, AK 1:250,000 Topographic Maps
 WATERBODY DATA: USGS National Hydrography Dataset - 2004
 MAP PROJECTION: Albers Equal Area North American Datum 1983
 Fairbanks Meridian
 Date Printed: March 10, 2006

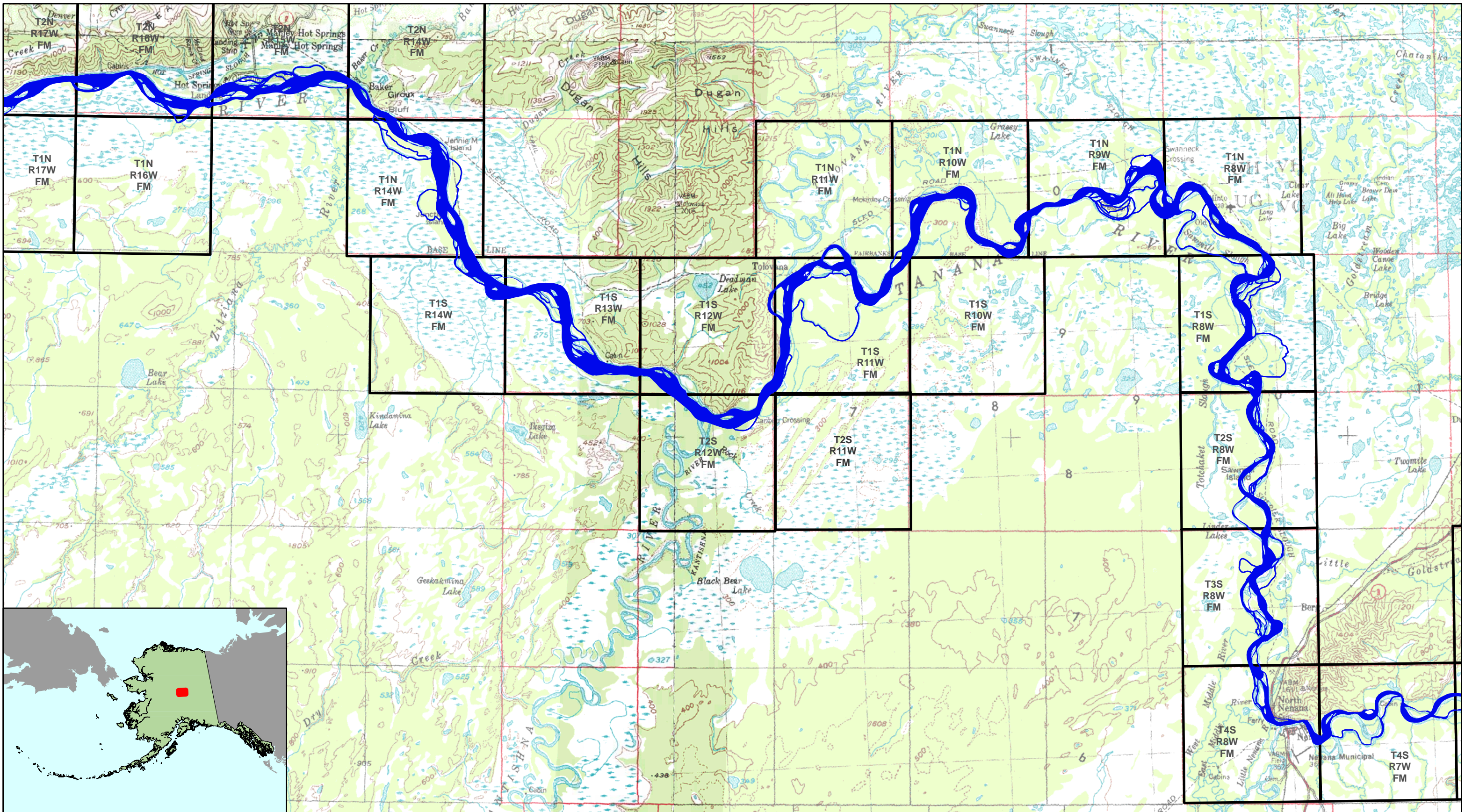
~State of Alaska~

Recordable Disclaimer of Interest

Application

Tanana River

Map: 4 of 6



Tanana River (Portion Applying For in RDI)

This map is based on the most recent data available; however the actual and/or historical location of the waters involved may differ from that shown on this map due to the changes in the waters over time.

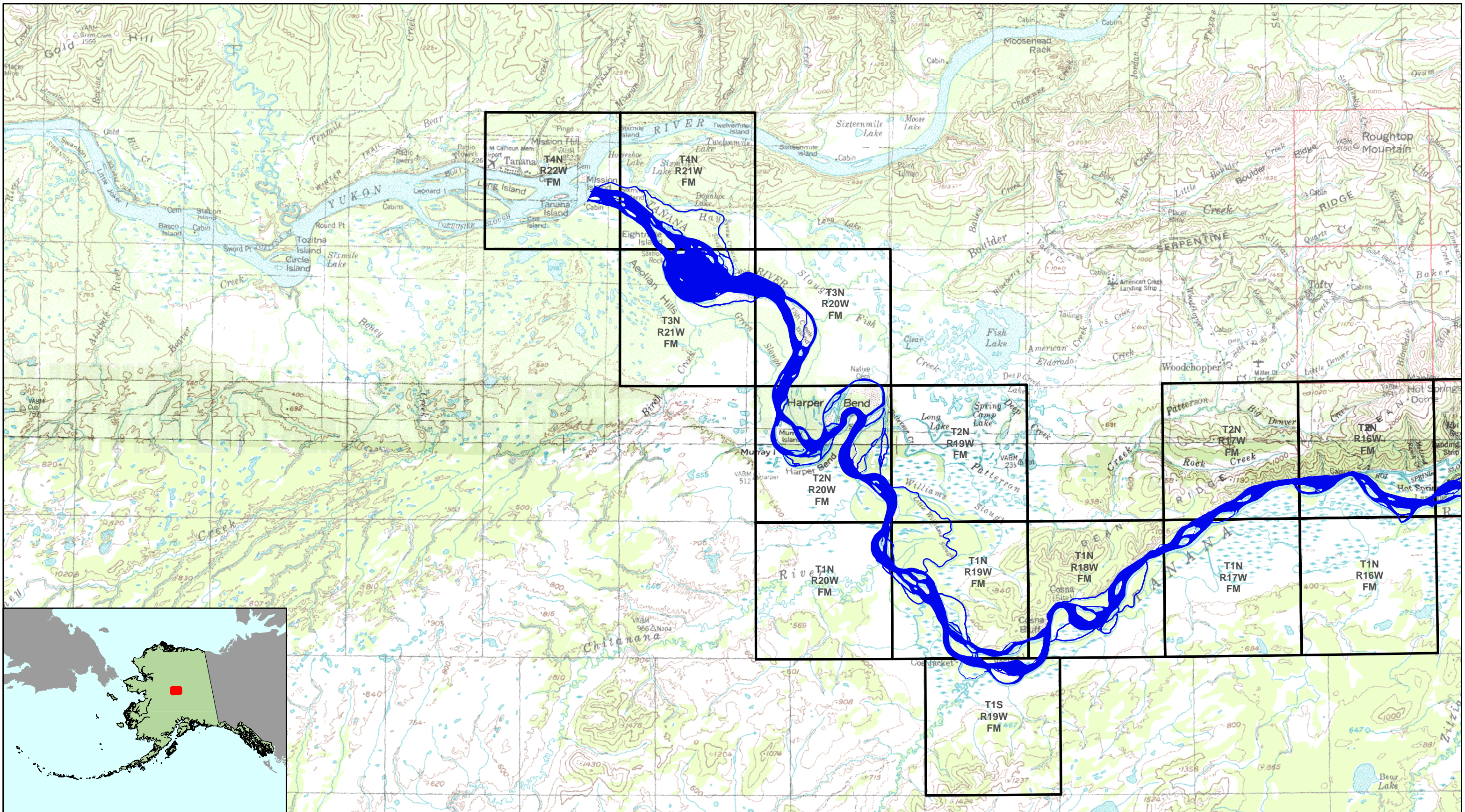
The State of Alaska makes no expressed or implied warranties (including warranties of merchantability and fitness) with respect to the character, function, or capabilities of this product or its appropriateness for any user's purposes. In no event will the State of Alaska be liable for any incidental, indirect, special, consequential or other damages suffered by the user or any other person or entity whether from use of the product, any failure thereof or otherwise, and in no event will the State of Alaska's liability to you or anyone else exceed the fee paid for the product.

0 1.5 3 6 9 12 Miles

1:250,000

BASE MAP: USGS Fairbanks, Kantishna River & Tanana, AK 1:250,000 Topographic Maps
WATERBODY DATA: USGS National Hydrography Dataset - 2004
MAP PROJECTION: Albers Equal Area North American Datum 1983
Fairbanks Meridian
Date Printed: March 10, 2006

~State of Alaska~
Recordable Disclaimer of Interest
Application
Tanana River
Map: 5 of 6



Tanana River (Portion Applying For in RDI)

This map is based on the most recent data available; however the actual and/or historical location of the waters involved may differ from that shown on this map due to the changes in the waters over time.

The State of Alaska makes no expressed or implied warranties (including warranties of merchantability and fitness) with respect to the character, function, or capabilities of this product or its appropriateness for any user's purposes. In no event will the State of Alaska be liable for any incidental, indirect, special, consequential or other damages suffered by the user or any other person or entity whether from use of the product, any failure thereof or otherwise, and in no event will the State of Alaska's liability to you or anyone else exceed the fee paid for the product.

0 1.5 3 6 9 12 Miles

1:250,000

BASE MAP: USGS Kantishna River & Tanana, AK 1:250,000 Topographic Maps
WATERBODY DATA: USGS National Hydrography Dataset - 2004
MAP PROJECTION: Albers Equal Area North American Datum 1983
Fairbanks Meridian
Date Printed: March 10, 2006

~State of Alaska~
Recordable Disclaimer of Interest
Application
Tanana River
Map: 6 of 6