

1:125,000

Aniak River & Aniak Lake

BASE MAP: Bethel A-1, B-1, B-2, C-1, C-2; Taylor Mountains B-8, C-8, AK USGS 1:63,360 Topographic Maps
WATERBODY DATA: USGS National Hydrography Dataset - 2004
MAP PROJECTION: Albers Equal Area North American Datum 1983
Seward Meridian
Date Printed: March 10, 2006

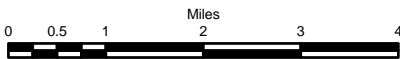
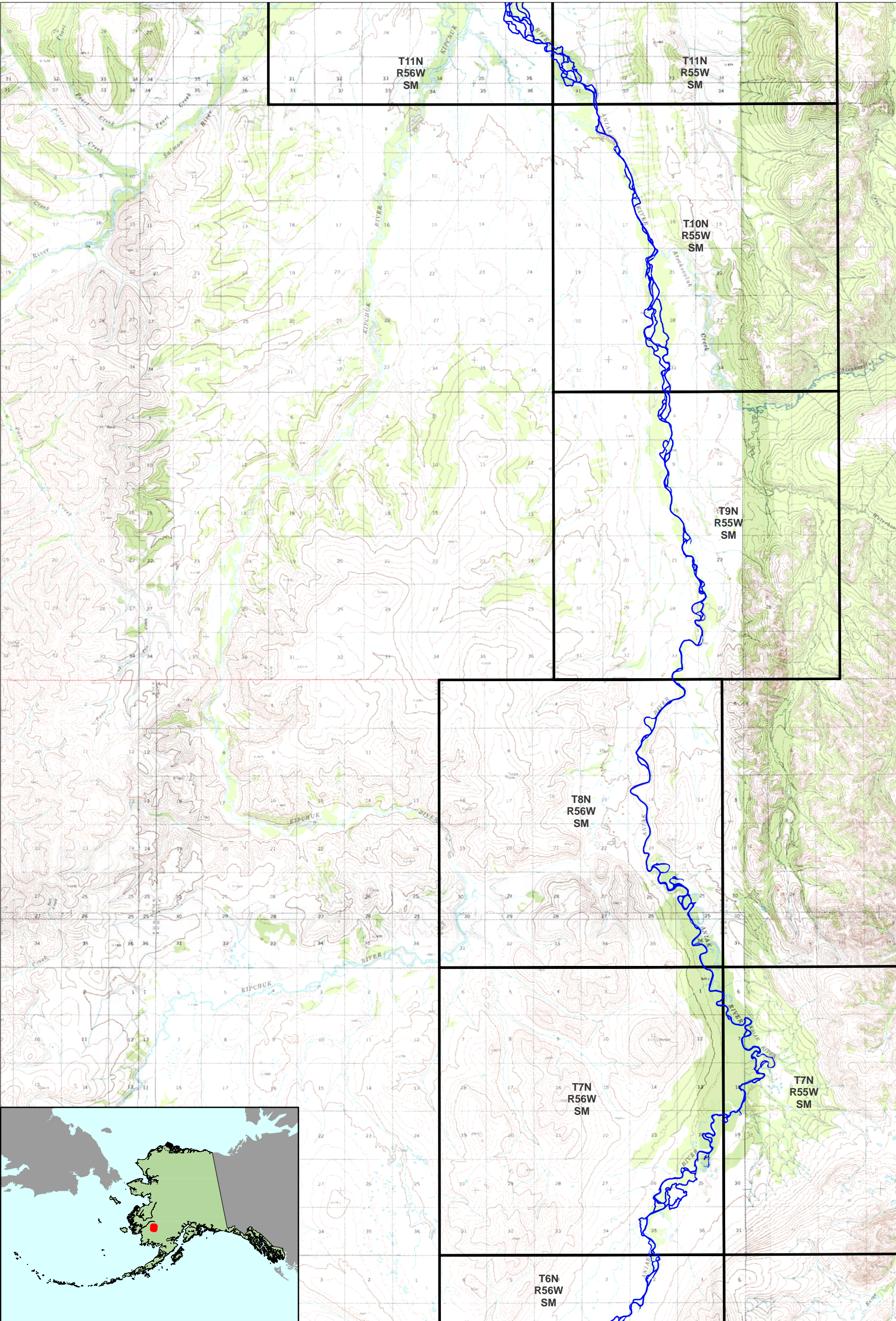
~State of Alaska~
**Aniak River & Aniak Lake
Recordable Disclaimer of
Interest Application
(Map: 1 of 4)**



Produced by:
Alaska Department of Natural Resources Division Mining Land and Water
Public Access Assertion and Defense Unit &
Alaska Department of Fish and Game

This map is based on the most recent data available; however the actual and/or historical location of the waters involved may differ from that shown on this map due to the changes in the waters over time.

The State of Alaska makes no expressed or implied warranties (including warranties of merchantability and fitness) with respect to the character, function, or capabilities of this product or its appropriateness for any user's purposes. In no event will the State of Alaska be liable for any incidental, indirect, special, consequential or other damages suffered by the user or any other person or entity whether from use of the product, any failure thereof or otherwise, and in no event will the State of Alaska's liability to you or anyone else exceed the fee paid for the product.



1:125,000

Aniak River

BASE MAP: Bethel C-1, C-2, D-1, D-2; Russian Mission A-1, A-2; Sleetmute A-8; Taylor Mountains C-8, D-8, AK USGS 1:63,360 Topographic Maps
WATERBODY DATA: USGS National Hydrography Dataset - 2004
MAP PROJECTION: Albers Equal Area North American Datum 1983
Seward Meridian
Date Printed: March 10, 2006

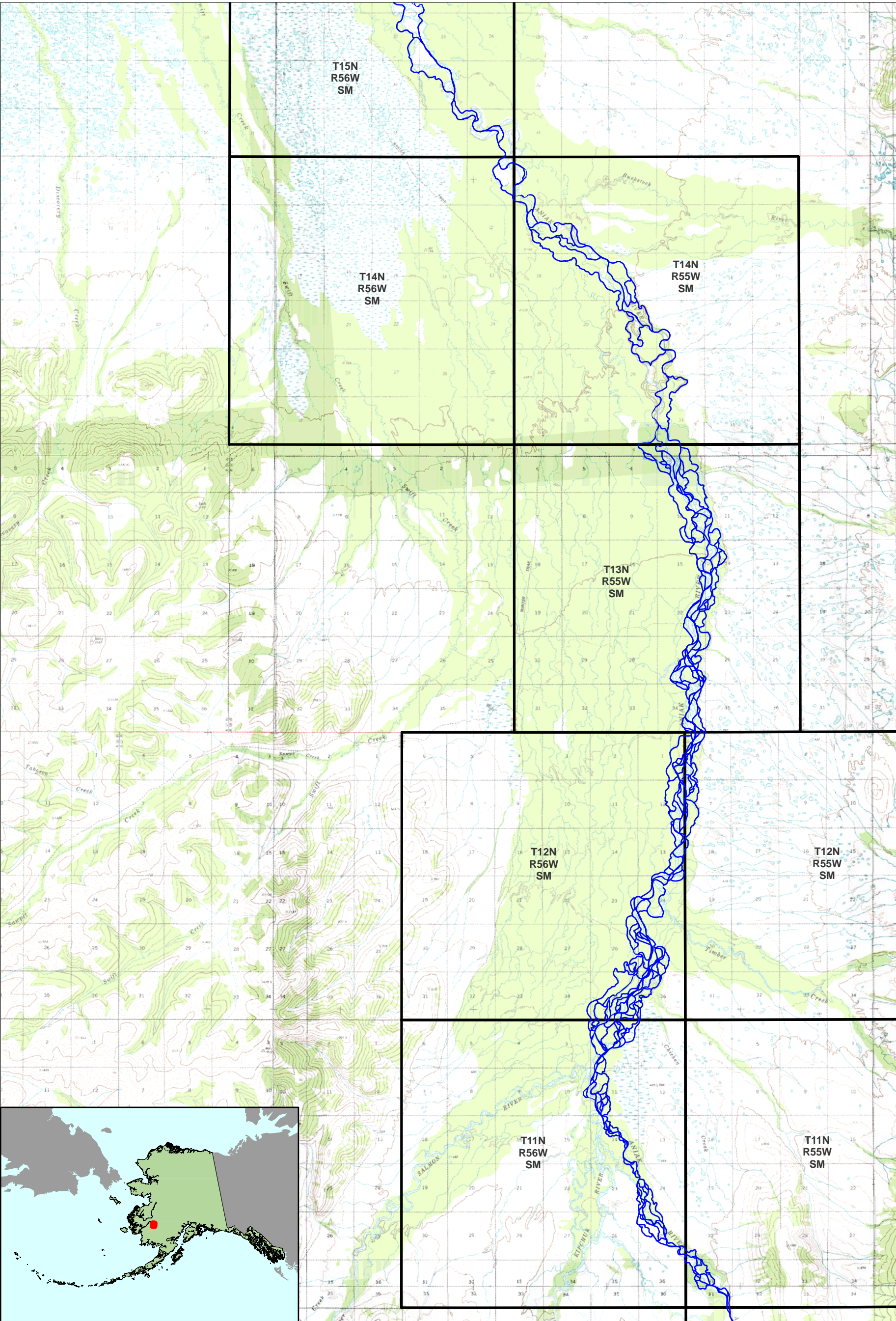
~State of Alaska~
**Aniak River & Ani Lake
Recordable Disclaimer of
Interest Application
(Map: 2 of 4)**



Produced by:
Alaska Department of Natural Resources Division Mining Land and Water
Public Access Assertion and Defense Unit &
Alaska Department of Fish and Game

This map is based on the most recent data available; however the actual and/or historical location of the waters involved may differ from that shown on this map due to the changes in the waters over time.

The State of Alaska makes no expressed or implied warranties (including warranties of merchantability and fitness) with respect to the character, function, or capabilities of this product or its appropriateness for any user's purposes. In no event will the State of Alaska be liable for any incidental, indirect, special, consequential or other damages suffered by the user or any other person or entity whether from use of the product, any failure thereof or otherwise, and in no event will the State of Alaska's liability to you or anyone else exceed the fee paid for the product.



1:125,000

Aniak River

BASE MAP: Bethel D-1, D-2; Russian Mission A-1, A-2, B-1, B-2; Sleetmute A-8 B-8, AK USGS 1:63,360 Topographic Maps
WATERBODY DATA: USGS National Hydrography Dataset - 2004
MAP PROJECTION: Albers Equal Area North American Datum 1983
Seward Meridian
Date Printed: March 10, 2006

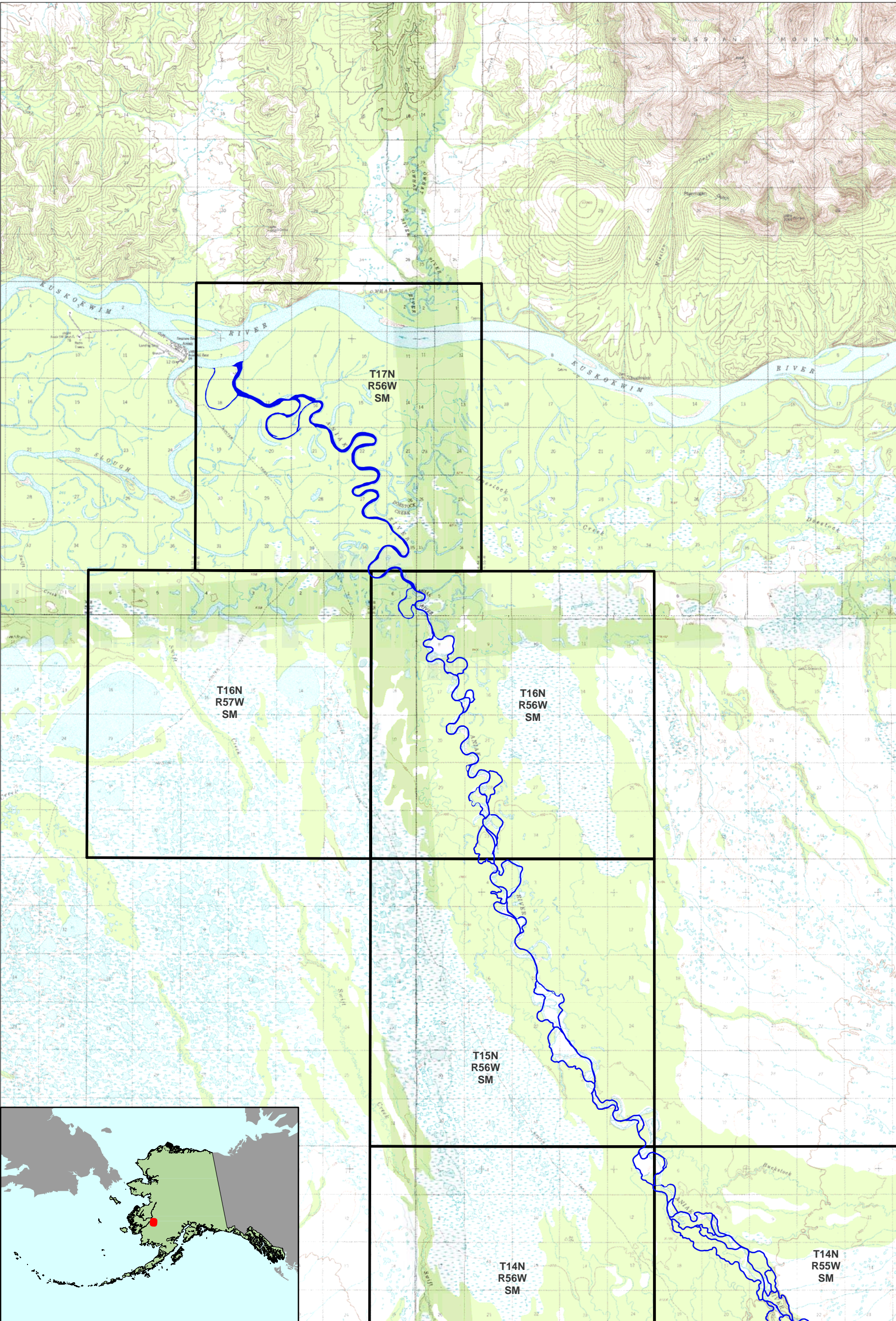
**~State of Alaska~
Aniak River & Aniak Lake
Recordable Disclaimer of
Interest Application
(Map: 3 of 4)**



Produced by:
Alaska Department of Natural Resources Division Mining Land and Water
Public Access Assertion and Defense Unit &
Alaska Department of Fish and Game

This map is based on the most recent data available; however the actual and/or historical location of the waters involved may differ from that shown on this map due to the changes in the waters over time.

The State of Alaska makes no expressed or implied warranties (including warranties of merchantability and fitness) with respect to the character, function, or capabilities of this product or its appropriateness for any user's purposes. In no event will the State of Alaska be liable for any incidental, indirect, special, consequential or other damages suffered by the user or any other person or entity whether from use of the product, any failure thereof or otherwise, and in no event will the State of Alaska's liability to you or anyone else exceed the fee paid for the product.



1:125,000

Aniak River

BASE MAP: Russian Mission A-1, A-2, B-1, B-2, C-1, C-2; Sleetmute A-8 B-8, C-8, AK USGS 1:63,360 Topographic Maps
WATERBODY DATA: USGS National Hydrography Dataset - 2004
MAP PROJECTION: Albers Equal Area North American Datum 1983
Seward Meridian
Date Printed: March 10, 2006



This map is based on the most recent data available; however the actual and/or historical location of the waters involved may differ from that shown on this map due to the changes in the waters over time.

The State of Alaska makes no expressed or implied warranties (including warranties of merchantability and fitness) with respect to the character, function, or capabilities of this product or its appropriateness for any user's purposes. In no event will the State of Alaska be liable for any incidental, indirect, special, consequential or other damages suffered by the user or any other person or entity whether from use of the product, any failure thereof or otherwise, and in no event will the State of Alaska's liability to you or anyone else exceed the fee paid for the product.

~State of Alaska~
Aniak River & Ani Lake
Recordable Disclaimer of
Interest Application
(Map: 4 of 4)