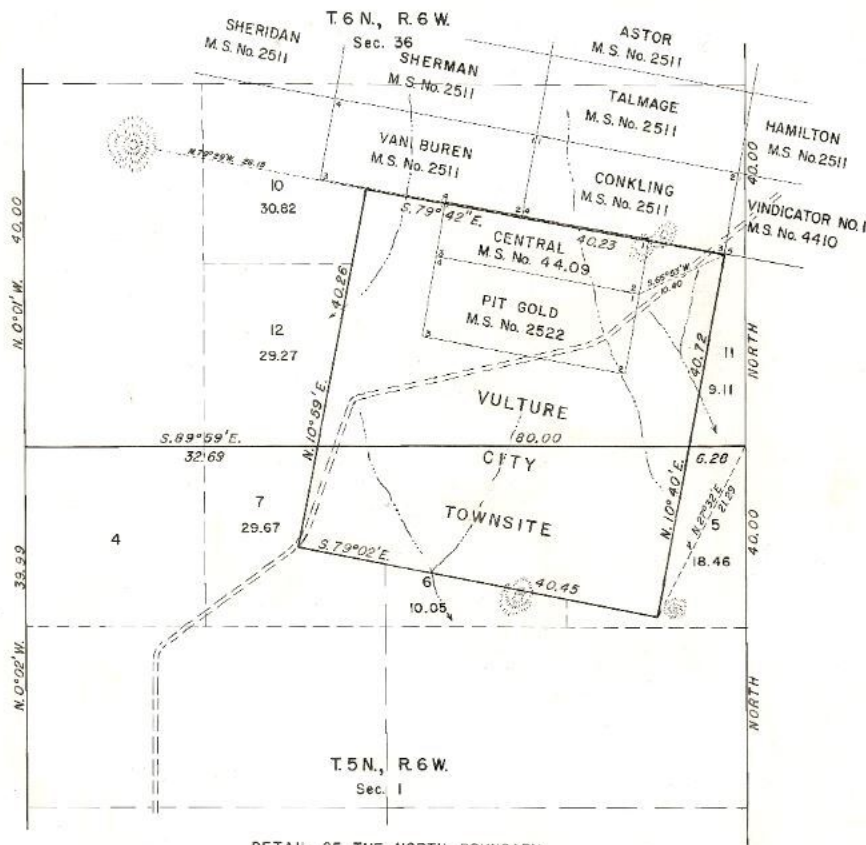


# TOWNSHIPS 5 & 6 NORTH, RANGE 6 WEST, OF THE GILA AND SALT RIVER MERIDIAN, ARIZONA

## RESURVEY AND SEGREGATION OF VULTURE CITY TOWNSITE

2726-A  
OFFICIALLY FILED 6-1-1962



### FIELD NOTES

Reestablishment of the Survey by  
Herbert R. Patrick, U. S. Deputy Surveyor in 1880

The northeast corner was monumented by a rotted, 4 x 4 inch pine post in a mound of stone. The southeast corner was monumented by a 4 x 4 inch pine post in the center of a circular mound of stone. The southwest corner was reestablished from the original bearing tree. The northwest corner was reestablished by proportion between the northeast corner and the southwest corner.

Resurveyed by Horace G. Parker, January 31, 1961 to February 2, 1961, under Assignment Instructions dated January 16, 1961 for Group No. 358, Arizona. Executed in accordance with provisions of the Manual of Surveying Instructions, 1947, and the Special Instructions approved January 16, 1961.

All corners were remonumented with iron posts, 30 inches long, 2 1/2 inches in diameter, set 24 inches in the ground except for the southeast corner which was set 6 inches below the surface of the road.

The northeast corner is marked, T 6 N R 6 W NE COR VCTS S 36 1961

The northwest corner is marked, T 6 N R 6 W NW COR VCTS S 36 1961, from which,  
Deposit broken glass at base of iron post.

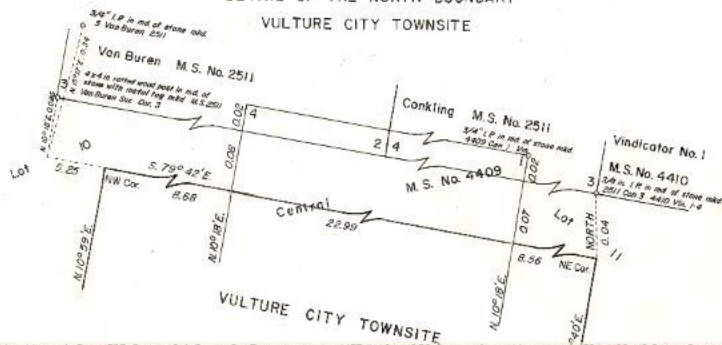
The southwest corner is marked, T 5 N R 6 W SW COR VCTS S 1 1961, from which,  
Original bearing tree,  
A palo verde, 12 inches in diameter, bears N. 4 1/2° E., 113 links distant, marked with a blaze.

New bearing tree,  
A palo verde, 6 inches in diameter, bears N. 85° E., 94 links distant, marked B T  
A palo verde, 10 inches in diameter, bears S. 87 1/2° W., 161 links distant, marked B T  
Deposit broken glass at base of iron post.

The southeast corner is marked, T 5 N R 6 W SE COR VCTS S 1 1961

The lottings and areas are as shown upon the plat of Tps. 5 and 6 N., R. 6 W., accepted June 28, 1918 and January 4, 1943, respectively, except as shown hereon.

### DETAIL OF THE NORTH BOUNDARY VULTURE CITY TOWNSITE



UNITED STATES DEPARTMENT OF THE INTERIOR  
BUREAU OF LAND MANAGEMENT  
Washington, D.C. May 1, 1962

This plat is strictly conformable to the above field notes of survey, which have been critically examined and found correct, and are hereby approved, and the survey, having been properly executed in accordance with the requirements of law and the regulations of this Bureau, is hereby accepted.

For the Director

*E. E. Livingston*