



## Boise National Forest, R4, Intermountain Region Public Comment Period 2024

### Summary

The Boise National Forest fee proposal includes fee increases to standard amenity fees, expanded amenity fees, along with a Volunteer Pass, a proposed Boise National Forest Pass in addition to adding new sites to the recreation fee program.

### Reason for Fee Change

Maintain the benefits currently provided against the erosive effects of inflation. Market price has increased as indicated by other providers raising their fees.

### Public Participation Results

The Boise National Forest is proposing several new and increased fees at developed recreation sites and had a public comment period from July 1 to September 4, 2024. Forest posted the fee proposal on their website, posted signs at proposed sites, and Facebook post on July 1. A legal notice was published in the Idaho Statesman on July 1 and a Federal Register Notice was published on August 1, 2024. A news release was distributed to local media outlets on July 1 and was published in the following locations:

- McCall Star News - 7/3/24
- KTVB - 7/1/24
- Idaho Statesman - 7/1/24
- KBOI - 7/1/24
- Idaho Capital Sun - 7/2/24
- Idaho Press - 7/7/24
- Modern Campground - 7/7/24
- Idaho County Free Press - 7/7/24
- AllSides - 7/1/24
- Goskagit.com - 7/7/24

Representative Michael Simpson and Representative Russ Fulcher were emailed on July 1 with no comments or concerns received.

Ada, Gem, Boise, Valley County Commissioners were sent emails on July 1 with no comments or concerns received.

Bannock, Shoshone, and Piute Tribes were emailed on July 1 with no comments or concerns received.

Forest presented the fee proposal to the Greater Boise Recreationalist Group including Idaho Parks and Rec, SWIMBA (mountain bike club), Idaho ATV Association, Backcountry Horseman, Rafting Companies met on December 3 with over 40 people in attendance. Several comment cards were received after the meeting.

Picnic Tables Sessions were held at several sites on busy weekends throughout the summer where staff handed out comment cards and talked to the public about the fee proposal.

Forest received 95 comments with 85 being unique comments, 62 in support and 33 negative comments. All comments are listed in Appendix A including duplicate comments.

## Public Participation Analysis

Forest is proposing to combine the Payette River and Forest Passes into the Forest Pass, which would be accepted at all sites. Forest also added a Volunteer Pass for those withing to volunteer with projects on the Forest. The proposal is 40 hours could earn an Annual Forest Pass, must be 18 years or older.

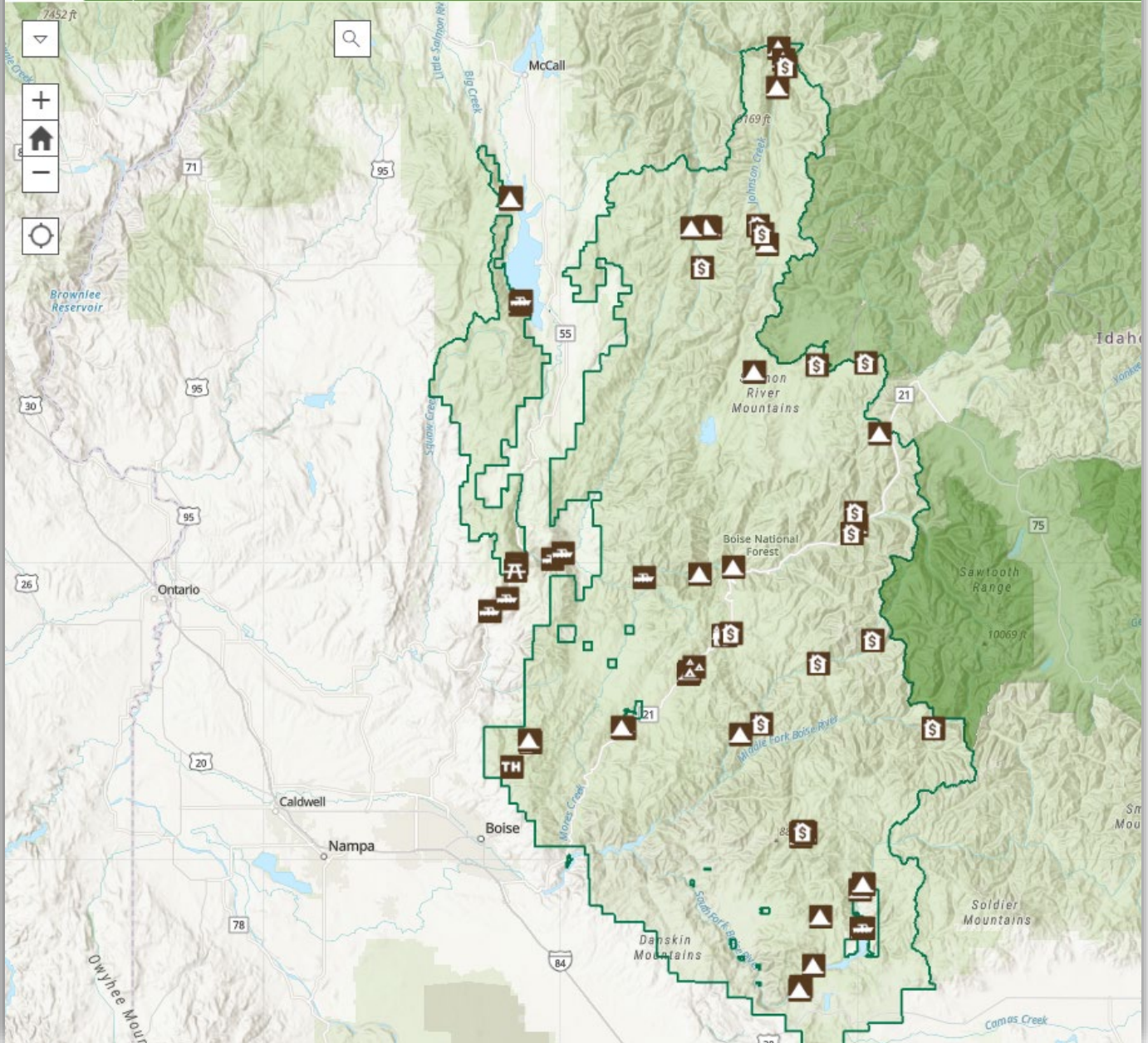
### Proposed Sites:

Site Name	Site Type	Current Fee	Proposed Fee
Banks Beach	Picnic Site	Day Fee: \$3 per vehicle Season/Year Fee: \$20 per vehicle	Day Fee: \$5 per vehicle Season/Year Fee: \$30 per vehicle
Stack Rock	Trailhead	Day Fee: \$0 per vehicle Season/Year Fee: \$0 per vehicle	Day Fee: \$5 per vehicle Season/Year Fee: \$30 per vehicle
Banks River Access	Boating Site	Day Fee: \$3 per vehicle Season/Year Fee: \$20 per vehicle	Day Fee: \$5 per vehicle Season/Year Fee: \$30 per vehicle
Beehive Bend (BLM Site)	Boating Site	Day Fee: \$3 per vehicle Season/Year Fee: \$20 per vehicle	Day Fee: \$5 per vehicle Season/Year Fee: \$30 per vehicle
Chief Parrish (BLM Site)	Boating Site	Day Fee: \$3 per vehicle Season/Year Fee: \$20 per vehicle	Day Fee: \$5 per vehicle Season/Year Fee: \$30 per vehicle
Confluence (BLM Site)	Boating Site	Day Fee: \$3 per vehicle Season/Year Fee: \$20 per vehicle	Day Fee: \$5 per vehicle Season/Year Fee: \$30 per vehicle
Danskin Rest Area	Boating Site	Day Fee: \$3 per vehicle Season/Year Fee: \$20 per vehicle	Day Fee: \$5 per vehicle Season/Year Fee: \$30 per vehicle
Deer Creek (BLM Site)	Boating Site	Day Fee: \$3 per vehicle Season/Year Fee: \$20 per vehicle	Day Fee: \$5 per vehicle Season/Year Fee: \$30 per vehicle
Deer Creek Boat Launch - Anderson Reservoir	Boat Ramp	Day Fee: \$0 per vehicle Season/Year Fee: \$0 per vehicle	Day Fee: \$5 per vehicle Season/Year Fee: \$30 per vehicle
Elk Creek	Boating Site	Day Fee: \$0 per vehicle Season/Year Fee: \$0 per vehicle	Day Fee: \$5 per vehicle Season/Year Fee: \$30 per vehicle
French Creek	Boating Site	Day Fee: \$0 per vehicle Season/Year Fee: \$0 per vehicle	Day Fee: \$5 per vehicle Season/Year Fee: \$30 per vehicle
Rainbow Point	Boating Site	Day Fee: \$0 per vehicle Season/Year Fee: \$0 per vehicle	Day Fee: \$5 per vehicle Season/Year Fee: \$30 per vehicle
Evans Creek	Campground	Single Site Fee: \$0	Single Site Fee: \$10
Golden Gate	Campground	Single Site Fee: \$0	Single Site Fee: \$10
Ice Hole	Campground	Single Site Fee: \$0	Single Site Fee: \$10
Ice Springs	Campground	Single Site Fee: \$0	Single Site Fee: \$10

Penn Basin	Campground	Single Site Fee: \$0	Single Site Fee: \$10
Picnic Point	Campground	Single Site Fee: \$0	Single Site Fee: \$10
Spillway	Campground	Single Site Fee: \$0	Single Site Fee: \$10
Yellow Pine	Campground	Single Site Fee: \$0	Single Site Fee: \$10
Amanita	Campground	Single Site Fee: \$15	Single Site Fee: \$20
Bad Bear	Campground	Single Site Fee: \$15	Single Site Fee: \$20
Black Rock	Campground	Single Site Fee: \$15	Single Site Fee: \$20
Big Roaring River Lake	Campground	Single Site Fee: \$15	Single Site Fee: \$20
Big Trinity Lake	Campground	Single Site Fee: \$15	Single Site Fee: \$20
Bonneville	Campground	Single Site Fee: \$15	Single Site Fee: \$20
Bull Trout	Campground	Single Site Fee: \$15	Single Site Fee: \$20
Edna Creek	Campground	Single Site Fee: \$15	Single Site Fee: \$20
French Creek	Campground	Single Site Fee: \$15	Single Site Fee: \$20
Grayback Gulch	Campground	Single Site Fee: \$15	Single Site Fee: \$20
Little Roaring River Lake	Campground	Single Site Fee: \$0	Single Site Fee: \$20
Mountain View	Campground	Single Site Fee: \$15	Single Site Fee: \$20
Pine Flats	Campground	Single Site Fee: \$15	Single Site Fee: \$20
Rainbow Point	Campground	Single Site Fee: \$15	Single Site Fee: \$20
Shafer Butte	Campground	Single Site Fee: \$10	Single Site Fee: \$20
Shoreline	Campground	Single Site Fee: \$15	Single Site Fee: \$20
South Fork Salmon River	Campground	Single Site Fee: \$15	Single Site Fee: \$20
Ten Mile	Campground	Single Site Fee: \$15	Single Site Fee: \$20
Warm Lake	Campground	Single Site Fee: \$15	Single Site Fee: \$20
Whoop-Um-Up	Horse Camp	Single Site Fee: \$15	Single Site Fee: \$20
Deer Creek - Anderson Reservoir	Camping Area	Single Site Fee: \$0 Double Site Fee: \$0	Single Site Fee: \$20 Double Site Fee: \$40
Dog Creek	Campground	Single Site Fee: \$15 Double Site Fee: \$20	Single Site Fee: \$20 Double Site Fee: \$40
Elks Flat	Campground	Single Site Fee: \$15 Double Site Fee: \$20	Single Site Fee: \$20 Double Site Fee: \$40
Deer Creek- Anderson Reservoir*	Group Campground	Night Fee: \$0 per group size: 100	Night Fee: \$150 per group size: 100
Elks Flat*	Group Campground	Night Fee: \$100 per group size: 100	Night Fee: \$150 per group size: 100
Hayfork*	Group Campground	Night Fee: \$100 per group size: 100	Night Fee: \$150 per group size: 100
Shafer Butte*	Group Campground	Night Fee: \$50 per group size: 50	Night Fee: \$150 per group size: 50
Grayback*	Group Campground	Night Fee: \$100 per group size: 100	Night Fee: \$250 per group size: 100
Big Trinity Cabin #2*	Cabin	Night Fee: \$0 per group size: 2	Night Fee: \$60 per group size: 2
Elk Creek*	Cabin	Night Fee: \$35 per group size: 6	Night Fee: \$60 per group size: 6

Graham*	Cabin	Night Fee: \$35 per group size: 6	Night Fee: \$60 per group size: 6
Whitehawk*	Lookout	Night Fee: \$0 per group size: 4	Night Fee: \$60 per group size: 4
Barber Flat*	Cabin	Night Fee: \$40 per group size: 6	Night Fee: \$80 per group size: 6
Beaver Creek*	Cabin	Night Fee: \$45 per group size: 6	Night Fee: \$80 per group size: 6
Big Trinity*	Cabin	Night Fee: \$30 per group size: 6	Night Fee: \$80 per group size: 6
Deer Park*	Cabin	Night Fee: \$35 per group size: 6	Night Fee: \$80 per group size: 6
Stolle Meadows*	Cabin	Night Fee: \$40 per group size: 6	Night Fee: \$80 per group size: 6
Warm Springs*	Cabin	Night Fee: \$35 per group size: 6	Night Fee: \$80 per group size: 6
Atlanta 1*	Cabin	Night Fee: \$45 per group size: 4	Night Fee: \$100 per group size: 4
Atlanta 2*	Cabin	Night Fee: \$0 per group size: 6	Night Fee: \$100 per group size: 6
Johnson Creek*	Cabin	Night Fee: \$50 per group size: 6	Night Fee: \$100 per group size: 6
Landmark Forester*	Cabin	Night Fee: \$0 per group size: 4	Night Fee: \$80 per group size: 4
Landmark South*	Cabin	Night Fee: \$0 per group size: 4	Night Fee: \$100 per group size: 4
Landmark West*	Cabin	Night Fee: \$0 per group size: 4	Night Fee: \$100 per group size: 4

\*Site is available on Recreation.gov with an additional reservation fee of \$8.00.



# Report Group: Boating Day Use Sites

**Market Analysis-Other Providers**    Data as of: 3/18/2024

Bruneau Sand Dunes - State Parks Price: \$7.00

Entry fee per vehicle. Flush Toilet, picnic areas, fire rings, multi-use trails.

Lud Drexler Park - BLM Price: \$5.00

Sites have picnic tables, fire rings, cabanas, and vault toilets. Fee is \$5 per vehicle.

Farragut State Park - State Park Price: \$5.00

Day use sites with boat launch, dump station, picnic tables, fire ring, vault toilet, visitor center, and horse facilities.  
Fee is \$5 per vehicle.

## Current and Proposed Fee Structure

Season	Fee Per	Rate Per	Range of Current Fees	Proposed Fee	Group Size
Primary Season	Day	Vehicle	\$0.00-\$3.00	\$5.00	1
Primary Season	Season/Year	Vehicle	\$20.00	\$30.00	1

## Pass Acceptance

All Interagency passes will be honored as well as the Forest Pass.

## Deer Creek Boat Ramp (BLM Site): Fee Increase

### Standard Amenity Fee

### Site Description

The Deer Creek Kayak Access is located between Banks and Crouch on the South Fork of the Payette River, just off the Banks-Lowman Highway.

### Planned Accomplishments

The BLM is planning on replacing the decking on the ramp.

### Site Amenities

Picnic tables, trash receptacle, interpretive sign, exhibit, or kiosk, paved parking, employee presence for public/resource protection, vault toilet, boat slide

### Proposed Fees:

Day Fee: Current: \$3 Proposed: \$5 rate per vehicle

Season/Year Fee: Current: \$20 Proposed: \$30 rate per vehicle



<b>Total Ops and Maint:</b>	\$8,632.16
<b>Deferred Maintenance:</b>	\$0.00
<b>Current Revenue:</b>	\$593.00
<b>Predicted Revenue:</b>	\$988.00



## Banks Beach Picnic Area/River: Fee Increase

### Standard Amenity Fee

#### Site Description

From Horseshoe Bend, Idaho travel north along State Highway 55 until you reach Banks, Idaho. The Picnic Area is very visible just before you arrive at Banks on the riverside of the Highway.

#### Planned Accomplishments

The district plans to paint the toilet and replace the pedestal grills. A bigger Idaho Highway Department project is planned for this rec site. The plan is to add a bigger parking lot on the opposite side of the highway, with an underpass.

#### Site Amenities

Trash receptacle, picnic tables, paved parking, interpretive sign, exhibit, or kiosk, vault toilet, employee presence for public/resource protection



<b>Total Ops and Maint:</b>	\$20,364.00
<b>Deferred Maintenance:</b>	\$19,935.00
<b>Current Revenue:</b>	\$3,015.00
<b>Predicted Revenue:</b>	\$5,025.00

#### Proposed Fees:

Day Fee: Current: \$3 Proposed: \$5 rate per vehicle

Season/Year Fee: Current: \$20 Proposed: \$30 rate per vehicle

## Banks River Access: Fee Increase

### Standard Amenity Fee

#### Site Description

Banks River Access provides restrooms and a large parking area. This access point is located near Banks, Idaho, near the junction of Highway 55 and the Banks-Lowman Highway.

#### Planned Accomplishments

The district plans to replace the boat ramp, parking lot repaving, hiking path, and a boat slide.

#### Site Amenities

Paved parking, trash receptacle, interpretive sign, exhibit, or kiosk, single lane paved boat ramp, vault toilet, picnic tables, employee presence for public/resource protection



<b>Total Ops and Maint:</b>	\$40,414.00
<b>Deferred Maintenance:</b>	\$173,589.00
<b>Current Revenue:</b>	\$7,538.00
<b>Predicted Revenue:</b>	\$12,653.00

#### Proposed Fees:

Day Fee: Current: \$3 Proposed: \$5 rate per vehicle

Season/Year Fee: Current: \$20 Proposed: \$30 rate per vehicle

# Beehive Bend Boating Site (BLM Site): Fee Increase

## Standard Amenity Fee

### Site Description

Beehive Bend Access is located on a popular stretch of the South Fork of the Payette River. It is located on Highway 55, six miles north of Horseshoe Bend. Beehive Bend provides restrooms and a boat ramp.

### Planned Accomplishments

The BLM is going to replace the boat ramp this year.

### Site Amenities

Picnic tables, vault toilet, employee presence for public/resource protection, unpaved parking, unpaved boat ramp, interpretive sign, exhibit, or kiosk, trash receptacle

### Proposed Fees:

Day Fee: Current: \$3 Proposed: \$5 rate per vehicle  
Season/Year Fee: Current: \$20 Proposed: \$30 rate per vehicle



Total Ops and Maint:	\$0.00
Deferred Maintenance:	\$0.00
Current Revenue:	\$11,677.00
Predicted Revenue:	\$19,461.00

# Chief Parrish River Access (BLM Site): Fee Increase

## Standard Amenity Fee

### Site Description

Chief Parrish is located on Highway 55, 8 miles north of Horseshoe Bend. Facilities include a picnic area, stair access to the river, and a pit toilet.

### Planned Accomplishments

The BLM plans to paint the toilet and replace the picnic table decking.

### Site Amenities

Trash receptacle, interpretive sign, exhibit, or kiosk, unpaved parking, picnic tables, vault toilet, employee presence for public/resource protection

### Proposed Fees:

Day Fee: Current: \$3 Proposed: \$5 rate per vehicle  
Season/Year Fee: Current: \$20 Proposed: \$30 rate per vehicle



Total Ops and Maint:	\$0.00
Deferred Maintenance:	\$0.00
Current Revenue:	\$480.00
Predicted Revenue:	\$800.00



# Confluence Boating Site (BLM Site): Fee Increase

## Standard Amenity Fee

### Site Description

Confluence Access is located 6 miles east of Banks, Idaho.

### Planned Accomplishments

The BLM plans to paint the toilet. In the long term the district would like to resurface the boat ramp at this site.

### Site Amenities

Trash receptacle, interpretive sign, exhibit, or kiosk, unpaved boat ramp, unpaved parking, picnic tables, vault toilet, employee presence for public/resource protection

### Proposed Fees:

Day Fee: Current: \$3 Proposed: \$5 rate per vehicle

Season/Year Fee: Current: \$20 Proposed: \$30 rate per vehicle



Total Ops and Maint:	\$0.00
Deferred Maintenance:	\$0.00
Current Revenue:	\$555.00
Predicted Revenue:	\$925.00

# Danskin Rest Area Boating Site: Fee Increase

## Standard Amenity Fee

### Site Description

Danskin River Access is located on the South Fork of the Payette River. It is approximately midway between the Garden Valley Ranger Station and the town of Lowman on the Banks-Lowman Highway.

### Planned Accomplishments

The district plans to paint the toilet and replace the boat slide decking.

### Site Amenities

Employee presence for public/resource protection, paved parking, boat slide, interpretive sign, exhibit, or kiosk, trash receptacle, picnic tables, vault toilet

### Proposed Fees:

Day Fee: Current: \$3 Proposed: \$5 rate per vehicle

Season/Year Fee: Current: \$20 Proposed: \$30 rate per vehicle



Total Ops and Maint:	\$33,465.00
Deferred Maintenance:	\$23,430.00
Current Revenue:	\$1,278.00
Predicted Revenue:	\$2,145.00

# Report Group: Day Use Sites

Market Analysis-Other Providers    Data as of: 3/18/2024

Bruneau Sand Dunes - State Parks

Price: \$7.00

Entry fee per vehicle. Flush Toilet, picnic areas, fire rings, multi-use trails.

Lud Drexler Park - BLM

Price: \$5.00

Sites have picnic tables, fire rings, cabanas, and vault toilets. Fee is \$5 per vehicle.

Farragut State Park - State Park

Price: \$5.00

Day use sites with boat launch, dump station, picnic tables, fire ring, vault toilet, visitor center, and horse facilities.  
Fee is \$5 per vehicle.

## Current and Proposed Fee Structure

Season	Fee Per	Rate Per	Range of Current Fees	Proposed Fee	Group Size
Primary Season	Day	Vehicle	\$0.00-\$3.00	\$5.00	1
Primary Season	Season/Year	Vehicle	\$0.00	\$30.00	1

## Pass Acceptance

All Interagency passes will be honored as well as the Forest Pass.

# Stack Rock Trailhead: New Fee

## Standard Amenity Fee

### Site Description

The Stack Rock trail is an awesome intermediate-level day hike with lots of shade. Beginning from the trailhead about 13 miles up Bogus Basin Road, the Stack Rock trail winds through the beautiful pine trees.

### Planned Accomplishments

This site has been complete reconstructed back in 2018 (paved parking lot, new toilet, new kiosk, picnic tables, and fire rings). The district plans to paint the toilet and picnic tables.

### Site Amenities

Trash receptacle, picnic tables, interpretive sign, exhibit, or kiosk, vault toilet, paved parking, employee presence for public/resource protection, and equestrian trailer parking.

### Proposed Fees:

Day Fee: Current: \$0 Proposed: \$5 rate per vehicle  
Season/Year Fee: Current: \$0 Proposed: \$30 rate per vehicle



Total Ops and Maint:	\$1,549.00
Deferred Maintenance:	\$15,690.00
Current Revenue:	\$0.00
Predicted Revenue:	\$3,500.00

## Deer Creek Boat Launch – Anderson Reservoir (to be built): New Fee

### Standard Amenity Fee

#### Site Description

This boat ramp would be developed with the Anderson Dam Raise project.

#### Planned Accomplishments

This is a newly constructed site. Provide maintenance repairs. This day use site is going to be part of a big project (Anderson Dam Raise).

#### Site Amenities

Interpretive sign, exhibit, or kiosk, picnic tables, trash receptacle, unpaved parking, paved boat ramp, vault toilet, employee presence for public/resource protection

#### Proposed Fees:

Day Fee: Current: \$0 Proposed: \$5 rate per vehicle

Season/Year Fee: Current: \$0 Proposed: \$30 rate per vehicle

<b>Total Ops and Maint:</b>	\$5,000.00
<b>Deferred Maintenance:</b>	\$0.00
<b>Current Revenue:</b>	\$0.00
<b>Predicted Revenue:</b>	\$3,500.00

---

## Elk Creek Boat Ramp: New Fee

### Standard Amenity Fee

#### Site Description

Elk Creek Boat Ramp provides access to Anderson Ranch Reservoir, just north of the dam. It is the closest ramp and dock location from Mountain Home, ID.

#### Planned Accomplishments

Provide maintenance repairs and elevation adjustments to docks weekly during peak seasons. This day use site is going to be part of a big project (Anderson Dam Raise). This project will retain this site as a day use site.

#### Site Amenities

Interpretive sign, exhibit, or kiosk, picnic tables, trash receptacle, unpaved parking, paved boat ramp, vault toilet, employee presence for public/resource protection

#### Proposed Fees:

Day Fee: Current: \$0 Proposed: \$5 rate per vehicle

Season/Year Fee: Current: \$0 Proposed: \$30 rate per vehicle



<b>Total Ops and Maint:</b>	\$7,407.00
<b>Deferred Maintenance:</b>	\$80,030.00
<b>Current Revenue:</b>	\$0.00
<b>Predicted Revenue:</b>	\$3,500.00

## French Creek Boat Docks: New Fee

### Standard Amenity Fee

#### Site Description

The French Creek Boat Docks are docks with a ramp located adjacent to Lower French Creek Campground.

#### Planned Accomplishments

The district is going to replace the picnic table planks.

#### Site Amenities

Trash receptacle, picnic tables, interpretive kiosk, unpaved parking, camp host, unpaved boat ramp, vault toilet



#### Proposed Fees:

Day Fee: Current: \$0 Proposed: \$5 rate per vehicle

Season/Year Fee: Current: \$0 Proposed: \$30 rate per vehicle

<b>Total Ops and Maint:</b>	\$3,170.00
<b>Deferred Maintenance:</b>	\$84,000.00
<b>Current Revenue:</b>	\$0.00
<b>Predicted Revenue:</b>	\$2,500.00

## Rainbow Point Boating: New Fee

### Standard Amenity Fee

#### Site Description

Lake Cascade offers excellent opportunities for boating, water skiing, canoeing, windsurfing and sailing. Anglers enjoy casting for rainbow trout, smallmouth bass and perch. A boat ramp is located within the campground.

#### Planned Accomplishments

The district is going to replace the picnic table planks and paint the toilet. Also, the district plans to replace the boat dock.

#### Site Amenities

Picnic tables, vault toilet, interpretive sign, exhibit, or kiosk, drinking water, employee presence for public/resource protection, single lane paved boat ramp, trash receptacle, gravel parking



#### Proposed Fees:

Day Fee: Current: \$0 Proposed: \$5 rate per vehicle

Season/Year Fee: Current: \$0 Proposed: \$30 rate per vehicle

<b>Total Ops and Maint:</b>	\$6,107.00
<b>Deferred Maintenance:</b>	\$60,390.00
<b>Current Revenue:</b>	\$0.00
<b>Predicted Revenue:</b>	\$2,500.00



# Report Group: Campgrounds \$10

Market Analysis-Other Providers    Data as of: 3/18/2024

Porcupine Springs - Forest Service

Price: \$10.00

Each site is equipped with a picnic table, campfire ring, grill and a utility table. Accessible vault toilets and drinking water are provided. A campground host is located on-site. Roads and parking spurs within the campground are gravel.

Cascade State Park - State Park

Price: \$30.00

Amenities include water hook-ups and vault toilets.

Cowboys Campground - Private

Price: \$30.00

Vault toilet equestrian sites.

## Current and Proposed Fee Structure

Season	Fee Per	Rate Per	Current Fee	Proposed Fee
Primary Season	Single Site	Night	\$0.00	\$10.00

## Pass Acceptance

Senior and Access pass holders receive a 50% discount.

# Yellow Pine Campground: New Fee

## Expanded Amenity Fee

### Site Description

Picnic tables, campfire rings and grills are available at the campsites. Vault toilets are also provided. There is no electricity at the campground.

### Planned Accomplishments

The district is planning to paint the toilets and picnic tables as well as replace signs.

### Site Amenities

Access road, fire device, picnic tables, vault toilet, tent or trailer space, unpaved parking, fee collection, and interpretive kiosk

### Proposed Fees:

Single Site Fee: Current: \$0 Proposed: \$10



Total Ops and Maint:		\$9,162.00
Deferred Maintenance:		\$350.00
Current Revenue:		\$0.00
Predicted Revenue:		\$5,417.00
Total Sites	14	



# Evans Creek Campground: New Fee

## Expanded Amenity Fee

### Site Description

Near the Campground is the Trailhead for the Wilson Creek trail system, which heads north. This motorized trail is open to ATVs 50 inches or less.

### Planned Accomplishments

The district plans to repaint restroom and tables, delineate parking areas for each camp site, upgrade picnic tables, fire rings and install tent pads.

### Site Amenities

Access road, fee collection, fire device, picnic tables, employee presence for public/resource protection, unpaved parking, vault toilet

### Proposed Fees:

Single Site Fee: Current: \$0 Proposed: \$10



Total Ops and Maint:		\$8,141.00
Deferred Maintenance:		\$2,675.00
Current Revenue:		\$0.00
Predicted Revenue:		\$1,500.00
Total Sites	10	

# Golden Gate Campground: New Fee

## Expanded Amenity Fee

### Site Description

The Golden Gate Campground offers 9 campsites in a peaceful, remote setting near mountain slopes covered in dense pine forest. Peak season for the campground is typically early June through late September.

### Planned Accomplishments

The district is planning to paint the toilets and picnic tables. Meet accessibility standards, contracted cleaning services, paint tables and toilets.

### Site Amenities

Access road, fee collection, fire device, unpaved parking, vault toilet, picnic tables, tent or trailer space

### Proposed Fees:

Single Site Fee: Current: \$0 Proposed: \$10



Total Ops and Maint:		\$8,861.00
Deferred Maintenance:		\$10,790.00
Current Revenue:		\$0.00
Predicted Revenue:		\$4,000.00
Total Sites	9	

## Ice Hole Campground: New Fee

### Expanded Amenity Fee

#### Site Description

The Ice Hole Campground offers 10 campsites in a peaceful, remote setting near mountain slopes covered in dense pine forest. Peak season for the campground is typically early June through late September.

#### Planned Accomplishments

Contracted cleaning services, extended seasonal use, paint toilets and picnic tables.

#### Site Amenities

Tent or trailer space, vault toilet, fire device, fee collection, access road, unpaved parking, interpretive kiosk



#### Proposed Fees:

Single Site Fee: Current: \$0 Proposed: \$10

<b>Total Ops and Maint:</b>		\$7,816.00
<b>Deferred Maintenance:</b>		\$300.00
<b>Current Revenue:</b>		\$0.00
<b>Predicted Revenue:</b>		\$4,000.00
<b>Total Sites</b>	10	

## Ice Springs Campground: New Fee

### Expanded Amenity Fee

#### Site Description

Campground has three campsites on Fall Creek near Anderson Ranch Reservoir. Campsites have a campfire ring, picnic table, and a vault toilet.

#### Planned Accomplishments

The district plans to repaint restroom and tables. Increase number of sites including adding camp trailer sites, delineate parking areas for each camp site, upgrade picnic tables, fire rings, install water system and new vault toilet.

#### Site Amenities

Access road, fee collection, fire device, picnic tables, employee presence for public/resource protection, unpaved parking, tent or trailer space, vault toilet, water - non-potable, and utility tables.



#### Proposed Fees:

Single Site Fee: Current: \$0 Proposed: \$10

<b>Total Ops and Maint:</b>		\$4,534.00
<b>Deferred Maintenance:</b>		\$4,155.00
<b>Current Revenue:</b>		\$0.00
<b>Predicted Revenue:</b>		\$1,500.00
<b>Total Sites</b>	3	

# Penn Basin Campground: New Fee

## Expanded Amenity Fee

### Site Description

The Penn Basin Campground near Landmark, Idaho, offers 6 campsites in a peaceful, remote setting near mountain slopes covered in dense pine forest. Peak season for the campground is typically early June through late September.

### Planned Accomplishments

The district is planning to paint the toilets and picnic tables, contacted cleaning services, ongoing maintenance, and meet accessibility standards.

### Site Amenities

Picnic tables, tent or trailer space, vault toilet, unpaved parking, fire device, fee collection, access road, and interpretive kiosk.

### Proposed Fees:

Single Site Fee: Current: \$0 Proposed: \$10



Total Ops and Maint:		\$8,046.00
Deferred Maintenance:		\$5,250.00
Current Revenue:		\$0.00
Predicted Revenue:		\$4,000.00
Total Sites	6	

# Picnic Point Campground: New Fee

## Expanded Amenity Fee

### Site Description

Picnic Point Campground is located on a bluff overlooking beautiful Warm Lake, at an elevation of 5,300 feet. Visitors enjoy boating, fishing, swimming, hiking and viewing local wildlife. The campground offers tent-only campsites.

### Planned Accomplishments

Paint toilet & picnic tables and meet accessibility standards.

### Site Amenities

Access road, fee collection, fire device, host or attendant present, vault toilet, picnic tables, trash receptacle, paved parking, drinking water available, and interpretive kiosk. Walk in the campground.

### Proposed Fees:

Single Site Fee: Current: \$0 Proposed: \$10



Total Ops and Maint:		\$8,137.00
Deferred Maintenance:		\$10,337.00
Current Revenue:		\$6,878.00
Predicted Revenue:		\$9,170.00
Total Sites	8	



# Spillway Campground: New Fee

## Expanded Amenity Fee

### Site Description

Small Campground along Anderson Ranch Reservoir is located at the far west end of the reservoir near the dam.

### Planned Accomplishments

District plans to repaint the restroom and tables. Delineate parking areas for each camp site, upgrade picnic tables, fire rings, and tent pads.

### Site Amenities

Access road, fire device, picnic tables, unpaved parking, vault toilet, tent or trailer space, employee presence for public/resource protection



Total Ops and Maint:		\$4,226.00
Deferred Maintenance:		\$2,430.00
Current Revenue:		\$0.00
Predicted Revenue:		\$4,000.00
Total Sites	3	

### Proposed Fees:

Single Site Fee: Current: \$0 Proposed: \$10

# Report Group: Campgrounds \$20

## Market Analysis-Other Providers Data as of: 3/18/2024

<u>North Fork Campground - Sawtooth NF (concessionaire)</u>	Price:	\$20.00
Vault Toilet and drinking water provided at rustic sites tucked in the trees.		
<u>Cascade State Park - State Park</u>	Price:	\$30.00
Amenities include water hook-ups and vault toilets.		
<u>Cowboy Campground - Private</u>	Price:	\$30.00
Vault Toilet and water.		

## Current and Proposed Fee Structure

Season	Fee Per	Rate Per	Range of Current Fees	Proposed Fee
Primary Season	Single Site	Night	\$0.00-\$15.00	\$20.00

## Pass Acceptance

Senior and Access pass holders receive a 50% discount.

# Whoop-um-up Equestrian Camp: Fee Increase

## Expanded Amenity Fee

### Site Description

Whoop-um-up Equestrian Campground is located 56 miles northeast of Boise, Idaho, along State Highway 21, under a scenic pine forested canopy.

### Planned Accomplishments

The district is planning to paint the toilets and picnic tables. Replace fire rings if funding allows.

### Site Amenities

Access road, fee collection, fire device, picnic tables, vault toilet, employee presence for public/resource protection, drinking water available, unpaved parking, tent or trailer space

### Proposed Fees:

Single Site Fee: Current: \$15 Proposed: \$20



Total Ops and Maint:		\$11,111.00
Deferred Maintenance:		\$5,200.00
Current Revenue:		\$1,381.00
Predicted Revenue:		\$1,841.00
Total Sites	6	



## Amanita Campground: Fee Increase

### Expanded Amenity Fee

#### Site Description

Amanita Campground is located next to scenic Lake Cascade in west-central Idaho. It is near the town of Donnelly, at an elevation of 4,850 feet. Boating, fishing, swimming and hiking are popular activities in this scenic region. There are 10 sites.

#### Planned Accomplishments

The district is planning to refurbish the campground post hazard tree removal.

#### Site Amenities

Access road, fee collection, fire device, picnic tables, vault toilet, water - potable, trash receptacle, tent or trailer space, unpaved parking, employee presence for public/resource protection, and interpretive kiosk.

#### Proposed Fees:

Single Site Fee: Current: \$15 Proposed: \$20



<b>Total Ops and Maint:</b>		\$9,549.00
<b>Deferred Maintenance:</b>		\$0.00
<b>Current Revenue:</b>		\$11,082.00
<b>Predicted Revenue:</b>		\$14,776.00
<b>Reservation Fee:</b>		\$8.00
<b>Total Sites</b>	10	

## Bad Bear Campground: Fee Increase

### Expanded Amenity Fee

#### Site Description

Bad Bear Campground is located 48 miles northeast of Boise, Idaho, in a scenic Ponderosa pine forest along State Highway 21 at an elevation of 5,100 feet. Wildlife and summer wildflowers are abundant. Historic Idaho City is just 11 miles south.

#### Planned Accomplishments

The district is planning to paint the toilets and picnic tables. Replace fire rings if funding allows.

#### Site Amenities

Fire device, fee collection, access road, paved parking, employee presence for public/resource protection, picnic tables, vault toilet, tent or trailer space, drinking water available

#### Proposed Fees:

Single Site Fee: Current: \$15 Proposed: \$20



<b>Total Ops and Maint:</b>		\$16,917.00
<b>Deferred Maintenance:</b>		\$2,535.00
<b>Current Revenue:</b>		\$5,557.00
<b>Predicted Revenue:</b>		\$7,409.00
<b>Reservation Fee:</b>		\$8.00
<b>Total Sites</b>	6	

# Big Roaring River Lake Campground: Fee Increase

## Expanded Amenity Fee

### Site Description

Set within the beautiful Trinity Recreation Area, the Big Roaring River Lake Campground has 12 campsites in a dense lodgepole forest on the river. The Trinity Recreation Area has a limited season due to late snow melt, but the campgrounds are accessible by vehicles with reasonable ground clearance.

### Planned Accomplishments

Install proper road drainages, add gravel to road, install overflow parking, increase signage for limited trailer access, upgrade picnic tables, fire rings, tent pads and improve water system.

### Site Amenities

Access road, fee collection, fire device, picnic tables, unpaved parking, vault toilet, tent or trailer space, drinking water available, employee presence for public/resource protection

### Proposed Fees:

Single Site Fee: Current: \$15 Proposed: \$20



Total Ops and Maint:		\$7,051.00
Deferred Maintenance:		\$0.00
Current Revenue:		\$1,095.00
Predicted Revenue:		\$1,460.00
Total Sites	12	

# Big Trinity Lake Campground: Fee Increase

## Expanded Amenity Fee

### Site Description

Set within the beautiful Trinity Recreation area, the Big Trinity Lake Campground has 17 campsites in a dense lodgepole forest on the lake and is the gateway to the rainbow basin non-motorized trail system.

### Planned Accomplishments

The district is planning to paint the toilets and picnic tables, install proper road drainages, add gravel to road, upgrade overflow parking, increase signage, upgrade picnic tables, fire rings and tent pads and water system.

### Site Amenities

Access road, fee collection, fire device, drinking water available, picnic tables, tent or trailer space, unpaved parking, vault toilet, employee presence for public/resource protection

### Proposed Fees:

Single Site Fee: Current: \$15 Proposed: \$20



Total Ops and Maint:		\$10,269.00
Deferred Maintenance:		\$350.00
Current Revenue:		\$6,714.00
Predicted Revenue:		\$8,952.00
Total Sites	17	

# Black Rock Campground: Fee Increase

## Expanded Amenity Fee

### Site Description

Black Rock Campground is located 20 miles from Idaho City, Idaho on the North Fork Boise River, at an elevation of 4,300 feet. Visitors enjoy fishing, swimming and exploring local trails.

### Planned Accomplishments

The district is planning to paint the toilets and picnic tables. Replace fire rings if funding allows.

### Site Amenities

Access road, fee collection, fire device, unpaved parking, picnic tables, tent or trailer space, vault toilet, employee presence for public/resource protection, drinking water available

### Proposed Fees:

Single Site Fee: Current: \$15 Proposed: \$20



Total Ops and Maint:		\$9,667.00
Deferred Maintenance:		\$275.00
Current Revenue:		\$8,751.00
Predicted Revenue:		\$11,668.00
Reservation Fee:		\$8.00
Total Sites	11	

# Bonneville Campground: Fee Increase

## Expanded Amenity Fee

### Site Description

Bonneville Campground is 19 miles east of Lowman, Idaho, just off Highway 21 at an elevation of 4,700 feet. Warm Springs Creek runs alongside the campground and the South Fork Payette River lies across the highway.

### Planned Accomplishments

The district is planning to paint the toilets and picnic tables. Cost of collections, ongoing maintenance, sign inventory, replace/repair, replace fire rings, new picnic tables, and toilet upgrades.

### Site Amenities

Access road, fee collection, fire device, picnic tables, vault toilet, unpaved parking, employee presence for public/resource protection, tent or trailer space, drinking water available, trash receptacle.

### Proposed Fees:

Single Site Fee: Current: \$15 Proposed: \$20



Total Ops and Maint:		\$27,159.00
Deferred Maintenance:		\$7,819.00
Current Revenue:		\$24,357.00
Predicted Revenue:		\$32,476.00
Reservation Fee:		\$8.00
Total Sites	22	



# Bull Trout Campground: Fee Increase

## Expanded Amenity Fee

### Site Description

Bull Trout Campground is located on the shores of beautiful Bull Trout Lake at an elevation of 6,900 feet. The lake offers great fishing and canoeing opportunities. Many trails for hiking, biking, horseback and off-road vehicle riding are in the area.

### Planned Accomplishments

The district is planning to paint the toilets and picnic tables. single and double post sign inventory, repair, upgrade, campground furniture upgrade, meet accessible standards, and toilet improvements.

### Site Amenities

Access road, fee collection, fire device, picnic tables, unpaved parking, vault toilet, tent or trailer space, trash receptacle, drinking water available, dock, and horse camp/corrals.

### Proposed Fees:

Single Site Fee: Current: \$15 Proposed: \$20



Total Ops and Maint:		\$44,556.00
Deferred Maintenance:		\$45,583.00
Current Revenue:		\$38,278.00
Predicted Revenue:		\$51,037.00
Reservation Fee:		\$8.00
Total Sites	38	

# Edna Creek Campground: Fee Increase

## Expanded Amenity Fee

### Site Description

Edna Campground is located 56 miles northeast of Boise, Idaho, in a scenic Ponderosa pine forest along Highway 21 at an elevation of 5,700 feet. Wildlife and summer wildflowers are abundant. Historic Idaho City is just 18 miles south.

### Planned Accomplishments

The campground was reconstructed in 2023. New toilets, tables, fire rings, sign boards, and tent pads.

### Site Amenities

Access road, fee collection, fire device, picnic tables, vault toilet, employee presence for public/resource protection, drinking water available, tent or trailer space, unpaved parking

### Proposed Fees:

Single Site Fee: Current: \$15 Proposed: \$20



Total Ops and Maint:		\$13,902.00
Deferred Maintenance:		\$47,254.00
Current Revenue:		\$6,040.00
Predicted Revenue:		\$8,053.00
Reservation Fee:		\$8.00
Total Sites	11	

# French Creek Campground: Fee Increase

## Expanded Amenity Fee

### Site Description

French Creek Campground is located next to scenic Lake Cascade in west-central Idaho. It is near the town of Cascade, at an elevation of 4,850 feet. Boating, fishing, swimming and hiking are popular activities in this scenic region.

### Planned Accomplishments

The district is planning to paint the toilets and picnic tables, meet accessibility standards, and contract cleaning services.

### Site Amenities

Access road, fire device, fee collection, picnic tables, vault toilet, host or attendant present, unpaved parking, tent or trailer space, drinking water available, trash receptacle

### Proposed Fees:

Single Site Fee: Current: \$15 Proposed: \$20



Total Ops and Maint:		\$13,208.00
Deferred Maintenance:		\$4,920.00
Current Revenue:		\$19,328.00
Predicted Revenue:		\$25,770.00
Reservation Fee:		\$8.00
Total Sites	21	

# Grayback Gulch Campground: Fee Increase

## Expanded Amenity Fee

### Site Description

Grayback Campground is located 36 miles northeast of Boise, Idaho, just off scenic Highway 21. Historic Idaho City is just two miles north of the campground. Visitors enjoy fishing in Mores Creek and exploring the Grayback Gulch Trail.

### Planned Accomplishments

The district is planning to paint the toilets and picnic tables. Replace fire rings if funding allows.

### Site Amenities

Access road, fire device, fee collection, paved parking, employee presence for public/resource protection, vault toilet, tent or trailer space, picnic tables, drinking water available

### Proposed Fees:

Single Site Fee: Current: \$15 Proposed: \$20



Total Ops and Maint:		\$28,037.00
Deferred Maintenance:		\$700.00
Current Revenue:		\$6,259.00
Predicted Revenue:		\$8,345.00
Reservation Fee:		\$8.00
Total Sites	18	



# Little Roaring River Lake Campground: New Fee

## Expanded Amenity Fee

### Site Description

Little Roaring River Lake Campground hosts 4 campsites and is located between the Upper Roaring River and Little Roaring River Lake in the Trinity Recreation Area.

### Planned Accomplishments

The district is planning on replacing all the campground furniture. Install proper road drainages, add gravel to road, upgrade overflow parking, increase signage for limited trailer access, upgrade picnic tables, and fire rings.

### Site Amenities

Access road, fire device, picnic tables, unpaved parking, employee presence for public/resource protection, vault toilet, tent or trailer space.

### Proposed Fees:

Single Site Fee: Current: \$0 Proposed: \$20



Total Ops and Maint:		\$3,881.00
Deferred Maintenance:		\$15,540.00
Current Revenue:		\$0.00
Predicted Revenue:		\$1,500.00
Total Sites	4	

# Mountain View Campground: Fee Increase

## Expanded Amenity Fee

### Site Description

Mountain View Campground is located just east of Lowman, Idaho, along Highway 21 at an elevation of 3,900 feet. Visitors enjoy rafting, kayaking and fishing on the South Fork Payette River, and soaking in the area's many hot springs pools.

### Planned Accomplishments

The district just completed reconstructing this campground and will use the fee money to maintain campground improvements.

### Site Amenities

Access road, fee collection, fire device, picnic tables, vault toilet, paved parking, employee presence for public/resource protection, tent or trailer space, drinking water available, trash receptacle

### Proposed Fees:

Single Site Fee: Current: \$15 Proposed: \$20



Total Ops and Maint:		\$16,059.00
Deferred Maintenance:		\$5,965.00
Current Revenue:		\$11,828.00
Predicted Revenue:		\$15,770.00
Reservation Fee:		\$8.00
Total Sites	14	

# Pine Flats Campground: Fee Increase

## Expanded Amenity Fee

### Site Description

Pine Flats Campground is located a few miles west of Lowman, Idaho, along the Banks-Lowman Highway at an elevation of 3,700 feet. Visitors enjoy rafting, kayaking and fishing on the South Fork Payette River, and soaking in the hot springs.

### Planned Accomplishments

The district is planning to paint the toilets and picnic tables, fee tube replacement, replace kiosk, and improved campground furniture.

### Site Amenities

Access road, paved parking, picnic tables, fire device, fee collection, drinking water available, tent or trailer space, vault toilet, employee presence for public/resource protection, trash receptacle

### Proposed Fees:

Single Site Fee: Current: \$15 Proposed: \$20



Total Ops and Maint:		\$24,427.00
Deferred Maintenance:		\$2,410.00
Current Revenue:		\$31,895.00
Predicted Revenue:		\$42,526.00
Reservation Fee:		\$8.00
Total Sites	24	

# Rainbow Point Campground: Fee Increase

## Expanded Amenity Fee

### Site Description

This small campground offers single-family campsites. Each is equipped with a picnic table, campfire ring with grill. Some sites have lake views and shoreline access.

### Planned Accomplishments

Ongoing improvements including those to meet accessibility standards.

### Site Amenities

Unpaved parking, host or attendant present, vault toilet, tent or trailer space, picnic tables, drinking water available, access road, trash receptacle, fee collection, fire device, and interpretive kiosk.

### Proposed Fees:

Single Site Fee: Current: \$15 Proposed: \$20



Total Ops and Maint:		\$13,081.00
Deferred Maintenance:		\$0.00
Current Revenue:		\$14,047.00
Predicted Revenue:		\$18,729.00
Reservation Fee:		\$8.00
Total Sites	12	

# Shafer Butte Campground: Fee Increase

## Expanded Amenity Fee

### Site Description

Shafer Butte is a tent only campground. It is located atop the scenic Boise Ridge Mountains, near Bogus Basin Mountain Recreation Area, at an elevation of 7,000 feet.

### Planned Accomplishments

The district is planning to paint the toilets and picnic tables and repair the water system in the future. Upgrade overflow parking, increase signage, delineate parking, upgrade picnic tables, fire rings, tent pads.

### Site Amenities

Access road, fee collection, fire device, picnic tables, host or attendant present, vault toilet, unpaved parking, tent or trailer space. Fee increase will not be made until the site is reconstructed. If water cannot be fixed, campground would stay \$10.

### Proposed Fees:

Single Site Fee: Current: \$10 Proposed: \$20



Total Ops and Maint:		\$28,307.00
Deferred Maintenance:		\$330,081.00
Current Revenue:		\$8,594.00
Predicted Revenue:		\$11,458.00
Reservation Fee:		\$8.00
Total Sites	7	

# Shoreline Campground: Fee Increase

## Expanded Amenity Fee

### Site Description

Shoreline Campground is located just across the road from the beautiful Warm Lake, at an elevation of 5,300 feet. Visitors enjoy boating, fishing, swimming, hiking and viewing local wildlife.

### Planned Accomplishments

Annual maintenance including painting tables and toilets.

### Site Amenities

Picnic tables, access road, trash receptacle, vault toilet, tent or trailer space, water - potable, employee presence for public/resource protection, fee collection, unpaved parking, fire device, and interpretive kiosk.

### Proposed Fees:

Single Site Fee: Current: \$15 Proposed: \$20



Total Ops and Maint:		\$24,306.00
Deferred Maintenance:		\$13,000.00
Current Revenue:		\$54,260.00
Predicted Revenue:		\$72,346.00
Reservation Fee:		\$8.00
Total Sites	31	



# South Fork Salmon River Campground: Fee Increase

## Expanded Amenity Fee

### Site Description

The South Fork Salmon River Campground hosts 11 campsites situated in a scenic forest of towering, new growth of lodge pole trees.

### Planned Accomplishments

Improve toilets and meet accessibility standards.

### Site Amenities

Access road, fee collection, fire device, picnic tables, unpaved parking, trash receptacle, water hand pump, tent or trailer space, vault toilet, interpretive kiosk

### Proposed Fees:

Single Site Fee: Current: \$15 Proposed: \$20



Total Ops and Maint:		\$7,948.00
Deferred Maintenance:		\$0.00
Current Revenue:		\$4,281.00
Predicted Revenue:		\$5,708.00
Reservation Fee:		\$8.00
Total Sites	11	

# Ten Mile Campground: Fee Increase

## Expanded Amenity Fee

### Site Description

Ten Mile is a small campground, a quick 48-mile drive from Boise, Idaho, along State Highway 21.

### Planned Accomplishments

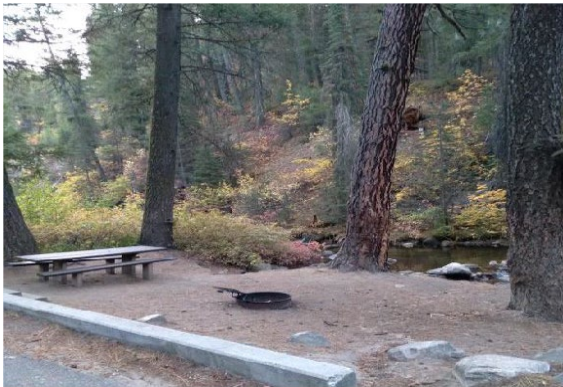
The district is planning to paint the toilets and picnic tables. Replace fire rings if funding allows.

### Site Amenities

Access road, picnic tables, drinking water available, paved parking, fire device, fee collection, tent or trailer space, vault toilet, employee presence for public/resource protection

### Proposed Fees:

Single Site Fee: Current: \$15 Proposed: \$20



Total Ops and Maint:		\$15,110.00
Deferred Maintenance:		\$3,180.00
Current Revenue:		\$11,738.00
Predicted Revenue:		\$15,650.00
Reservation Fee:		\$8.00
Total Sites	15	

# Warm Lake Campground: Fee Increase

## Expanded Amenity Fee

### Site Description

Picnic tables, campfire rings with grills are available at the campsites. Vault toilets and drinking water are also provided. There is no electricity at the campground.

### Planned Accomplishments

Picnic tables getting replaced, improved accessibility, tent pad lumber, site markers, paint toilets and tables.

### Site Amenities

Access road, fee collection, fire device, picnic tables, vault toilet, drinking water available, trash receptacle, tent or trailer space, unpaved parking, host or attendant present, and interpretive kiosk.

### Proposed Fees:

Single Site Fee: Current: \$15 Proposed: \$20



Total Ops and Maint:		\$9,307.00
Deferred Maintenance:		\$34,645.00
Current Revenue:		\$13,615.00
Predicted Revenue:		\$18,153.00
Reservation Fee:		\$8.00
Total Sites	12	



# Report Group: Campgrounds \$20 Single and \$40 Double

Market Analysis-Other Providers Data as of: 5/15/2024

<u>North Fork Campground - Sawtooth NF (concessionaire)</u>	Price:	\$20.00
Vault Toilet and drinking water provided at rustic sites tucked in the trees.		
<u>Cascade State Park - State Park</u>	Price:	\$30.00
Amenities include water hook-ups and vault toilets.		
<u>Cowboy Campground - Private</u>	Price:	\$30.00
Vault Toilet and water.		

## Current and Proposed Fee Structure

Season	Fee Per	Rate Per	Range of Current Fees	Proposed Fee
Primary Season	Single Site	Night	\$0.00-\$15.00	\$20.00
Primary Season	Double Site	Night	\$0.00-\$20.00	\$40.00

## Elks Flat Campground: Fee Increase

### Expanded Amenity Fee

### Site Description

Situated on the banks of the South Fork Boise River, at the foot of the Trinity Mountain Range.

### Planned Accomplishments

The district is planning to install proper road drainages, add gravel to road, install better signs, upgrade picnic tables, upgrade fire rings, and upgrade overflow parking.

### Site Amenities

Access road, fee collection, fire device, picnic tables, vault toilet, unpaved parking, trash receptacle, host or attendant present, tent or trailer space, drinking water available

### Proposed Fees:

Single Site Fee: Current: \$15 Proposed: \$20  
Double Site Fee: Current: \$20 Proposed: \$40



Total Ops and Maint:		\$3,825.00
Deferred Maintenance:		\$0.00
Current Revenue:		\$26,882.00
Predicted Revenue:		\$35,842.00
Reservation Fee:		\$8.00
Total Sites	36	

# Deer Creek Campground – Anderson Reservoir (to be built): New Fee

Expanded Amenity Fee

**Site Discretion**  
Proposed 21-site campground that will be funded by the Bureau of Reclamation Anderson Dam Raise. Everything will be new if the Anderson Dam raise is approved. In the campground proposal it will have 21 RV sites, 2 vault toilets, and drinking water.

**Planned Accomplishments**

This will be a totally new campground for the Mountain Home district. The funds generated from this new campground will help with the upkeep of this facility, which include toilet pumping contract, toilet cleaning contract, hazard tree removal, drinking water testing/maintenance.

**Site Amenities**  
Access road, fee collection, fire device, picnic tables, tent or trailer space, vault toilet, employee presence for public/resource protection, unpaved parking, drinking water available

**Proposed Fees:**  
Single Site Fee: Current: \$0 Proposed: \$20  
Double Site Fee: Current: \$0 Proposed: \$40

Total Ops and Maint:		\$5,691.27
Deferred Maintenance:		\$7,463.50
Current Revenue:		\$0.00
Predicted Revenue:		\$30,000.00
Reservation Fee:		\$8.00
Total Sites	15	

---

# Dog Creek Campground: Fee Increase

Expanded Amenity Fee

**Site Description**  
Dog Creek Campground is located on the banks of Dog Creek, at the foot of the Trinity Mountain Range. It is four miles from the town of Pine, in south-central Idaho. Visitors enjoy fishing, swimming and exploring local trails.

**Planned Accomplishments**  
The district is planning to paint the toilets and picnic tables, upgrade picnic tables, upgrade fire rings, upgrade overflow parking, and install proper road drainages, add gravel to road.

**Site Amenities**  
Access road, fee collection, fire device, picnic tables, unpaved parking, host or attendant present, vault toilet, tent or trailer space, trash receptacle, drinking water available

**Proposed Fees:**  
Single Site Fee: Current: \$15 Proposed: \$20  
Double Site Fee: Current: \$20 Proposed: \$40



Total Ops and Maint:		\$14,275.00
Deferred Maintenance:		\$5,615.00
Current Revenue:		\$5,200.00
Predicted Revenue:		\$6,933.00
Reservation Fee:		\$8.00
Total Sites	13	

# Report Group: Group Campground \$150

Market Analysis-Other Providers Data as of: 3/18/2024

Chemeketan Campground – Forest Service Price: \$175.00

This campground is reached via dirt road; however, visitors must ford a stream before reaching the site. Trucks, RVs and cars with higher clearance should have no trouble crossing the stream. The campground offers one group site that can accommodate up to 150 people. Vault toilets, tables and grills are provided.

Silver Creek Campground – Forest Service Price: \$150.00

The site can accommodate up to 100 people. Two accessible group campsites are available with picnic shelters, multiple tables, campfire rings, grills, and ample parking.

White Sandy Campground – Forest Service Price: \$140.00

Group sites can accommodate up to 32-sites with tables, fire ring, paved roads and parking, electricity, shelters, drink water, and vault toilets.

## Current and Proposed Fee Structure

Season	Fee Per	Rate Per	Range of Current Fees	Proposed Fee	Group Size
Primary Season	Night	Group	\$50.00-\$100.00	\$150.00	50-100

## Shafer Butte Group Campground: Fee Increase

### Expanded Amenity Fee

#### Site Description

Located atop the scenic Boise Ridge Mountain, near Bogus Basin Mountain Recreation area. Hiking and biking on various trails in the area. There are two-day use group sites (East and West) that both offer a large fire ring, benches, and picnic tables.

#### Planned Accomplishments

Repaint restrooms and tables at group campsites, repair water system. The district would like to add a new water system.

#### Site Amenities

Paved parking, picnic tables, serving table, host or attendant present, tent or trailer space, vault toilet, water - non- potable.

#### Proposed Fees:

Night Fee: Current: \$50 Proposed: \$150 rate per group size: 50



Total Ops and Maint:	\$16,350.00
Deferred Maintenance:	\$173,890.00
Current Revenue:	\$423.00
Predicted Revenue:	\$600.00
Reservation Fee:	\$8.00

# Deer Creek Group Campground – Anderson Reservoir (to be built): New Fee

Expanded Amenity Fee

Site Description

The Deer Creek Group campground is a proposed campground funded Anderson Dam Raise. If this project moves forward, the group campground should be in place by FY26. This group site will be able to accommodate 100 people, with a parking area, picnic tables, and a shelter.

Planned Accomplishments

The proposed Deer Creek campground will be a totally new group campground that is planned to be opened by 2026.

Site Amenities

Fire device, picnic tables, vault toilet, pavilion with utilities, serving table, tent or trailer space, unpaved parking, trash receptacle, water - non-potable

Proposed Fees:

Night Fee: Current: \$0 Proposed: \$150 rate per group size: 100

Total Ops and Maint:	\$0.00
Deferred Maintenance:	\$0.00
Current Revenue:	\$0.00
Predicted Revenue:	\$3,000.00
Reservation Fee:	\$8.00

# Elks Flat Group Campground: Fee Increase

Expanded Amenity Fee

Site Description

Situated on the banks of the South Fork Boise River, the campground has 2 group sites and 36 other camp sites. Each group site offers a large, covered shelter with utility tables and fire rings. This campground contains two large group campsites.

Planned Accomplishments

Repaint restrooms, pavilion, and picnic tables at group campsites. The campground entrance needs a gate installed. This campground has many Cottonwoods that need taken down for safety reasons.

Site Amenities

Trash receptacle, tent or trailer space, fire device, pavilion without utilities, unpaved parking, serving table, host or attendant present, drinking water available, vault toilet, picnic tables

Proposed Fees:

Night Fee: Current: \$100 Proposed: \$150 rate per group size: 100



Total Ops and Maint:	\$23,889.00
Deferred Maintenance:	\$32,255.00
Current Revenue:	\$830.00
Predicted Revenue:	\$2,500.00
Reservation Fee:	\$8.00



# Hayfork Group Campground: Fee Increase

## Expanded Amenity Fee

### Site Description

Hayfork Group Campground is located 49 miles northeast of Boise, Idaho, along scenic Highway 21. Historic Idaho City is just 12 miles south of the campground. Visitors enjoy fishing in Mores Creek and exploring local trails.

### Planned Accomplishments

The district plans to paint picnic tables and paint the toilets. The district would like to reconstruct the individual sites with new tent pads, and campground furniture.

### Site Amenities

Fire device, picnic tables, employee presence for public/resource protection, vault toilet, paved parking, serving table, trash receptacle, tent or trailer space, drinking water available

### Proposed Fees:

Night Fee: Current: \$100 Proposed: \$150 rate per group size: 100



Total Ops and Maint:	\$8,262.00
Deferred Maintenance:	\$1,050.00
Current Revenue:	\$4,861.00
Predicted Revenue:	\$7,291.00
Reservation Fee:	\$8.00

## Report Group: Group Campgrounds \$250

### Grayback Group, Group Campground: Fee Increase

#### Expanded Amenity Fee

#### Site Description

The campground has picnic and serving tables, grills, campfire circles and paved site pads. The two sites will be combined to accommodate 250 people.

#### Planned Accomplishments

The site will combine two existing group sites to accommodate one large group. The district plans to paint picnic tables and paint the toilets. The district would like to construct a covered pavilion area for this group site.

#### Site Amenities

Fire device, vault toilet, employee presence for public/resource protection, paved parking, serving table, trash receptacle, tent or trailer space, drinking water available, picnic tables



<b>Total Ops and Maint:</b>	\$42,622.00
<b>Deferred Maintenance:</b>	\$1,975.00
<b>Current Revenue:</b>	\$15,898.00
<b>Predicted Revenue:</b>	\$23,847.00
<b>Reservation Fee:</b>	\$8.00

#### Proposed Fees:

Night Fee: Current: \$100 Proposed: \$250 rate per group size: 100

#### Market Analysis-Other Providers Data as of: 6/6/2024

##### Wilderness Gateway Group Site-US Forest Service

Price: \$280.00

Nez Perce-Clearwater National Forests. Fee is per night, up to 208 people. Tents, RVs up to 60' length, fire rings, picnic tables, drinking water, vault toilets in group site, flush toilets in nearby family campground, paved parking, garbage collection, recreation opportunities nearby.

##### Snowbank Group Campground-Idaho State Parks

Price: \$210.00

Lake Cascade Station Park. Idaho Resident Fee: \$100 for up to 20 people, \$2 per additional person up to 75 people (\$210/night). Tents, space for some RVs, fire rings, picnic tables, drinking water, vault toilets, paved parking, garbage collection, paved accessible trails, recreation opportunities nearby. 1 vehicle included with nightly fee; all other vehicles require \$7 vehicle entry fee

##### Roy Stone Hot Springs, RV Park & Event Center-Private

Price: \$175.00

\$175 base price: Includes 25 people camping in tents – add \$3 for each additional person. Tent camping only, fire rings/bonfire pits, picnic tables, serving tables, Dutch oven cooking area, no drinking water, flush toilets, access to hot springs, picnic shelters, pickleball/basketball court, volleyball, sandbox.

#### Current and Proposed Fee Structure

Season	Fee Per	Rate Per	Current Fee	Proposed Fee	Group Size
Primary Season	Night	Group	\$100.00	\$250.00	250
Remarks	Combining two group campgrounds into one large site.				

# Report Group: Cabins \$60

Market Analysis-Other Providers    Data as of: 4/27/2023

Pebble Guard Station Price:        \$60.00

Forest Service - Cabin offers up to 6 people with wood stove, stove/oven, propane lights and appliances, running water, and shower.

Malad Summit Guard Station Price:        \$60.00

Forest service - Can accommodate up to 6 people with wood stove, electrical appliances, lights, stove/oven, refrigerator, propane heat, and vault toilet.

Cozy River Cabin Price:        \$135.00

Private - Can accommodate up to 4 people with flush toilets, running water and modern amenities

**Current and Proposed Fee Structure**

Season	Fee Per	Rate Per	Range of Current Fees	Proposed Fee	Group Size
Primary Season	Night	Group	\$35.00-\$45.00	\$60.00	6

# Big Trinity Cabin #2: New Fee

## Expanded Amenity Fee

### Site Description

Big Trinity Cabin #2 sleeps four with one double bed, a sofa bed, side tables, a drop-down kitchen table, cleaning supplies, dishes and tableware, chairs and a dining table, cookware, propane stove/heat, fire extinguisher, and an outdoor hand pump.

### Planned Accomplishments

The district is replacing all the furniture in the cabin. Also, this cabin will get a complete remodel (new roof, flooring, and paint).

### Site Amenities

Access road, electric/gas heat, lake/river oriented, drinking water available, outdoor hand pump, propane lights/modern appliances, unpaved parking, employee presence for public/resource protection, basic kitchen supplies.

### Proposed Fees:

Night Fee: Current: \$0 Proposed: \$60 rate per group size: 2



Total Ops and Maint:	\$4,300.00
Deferred Maintenance:	\$130,000.00
Current Revenue:	\$0.00
Predicted Revenue:	\$3,946.00
Reservation Fee:	\$8.00

# Elk Creek Guard Station: Fee Increase

## Expanded Amenity Fee

### Site Description

The Elk Creek Cabin can accommodate up to 6 people on three bedrooms with two beds in each room. A fireplace, couch, chairs and dining table with chairs are in the front room. A wood stove is located off the kitchen for heating. Firewood for the cabin is provided in a woodshed but may need to be split. An axe and splitting maul are provided. The cabin does not have electricity or water. Guests must bring their own water as well as garbage bags for packing out trash. Bedding, lighting and emergency supplies are not provided.

### Planned Accomplishments

The district is replacing all the furniture in the cabin and is looking on painting the entire cabin (in and out).

### Site Amenities

Gravel access road and parking, propane/lights appliances, fireplace, historic structure rental, vault toilet, garbage receptacle. The cabin is only rented from November 1 to April 30.

### Proposed Fees:

Night Fee: Current: \$35 Proposed: \$60 rate per group size: 6



Total Ops and Maint:	\$3,647.93
Deferred Maintenance:	\$1,650.00
Current Revenue:	\$2,019.00
Predicted Revenue:	\$2,500.00
Reservation Fee:	\$8.00



# Graham Guard Station: Fee Increase

## Expanded Amenity Fee

### Site Description

Accommodates six people on a futon and two twin beds with mattresses. The kitchen is equipped with a table and chairs, cookware, and a dry sink. A wood stove is provided for heat, and firewood can be gathered from the surrounding forest.

### Planned Accomplishments

The district is replacing all the furniture in the cabin and is looking on painting the entire cabin (in and out).

### Site Amenities

Gravel access road and parking, basic kitchen supplies, pit toilet, air strip, fireplace/woodstove heat, scenic views, lake/river oriented.

### Proposed Fees:

Night Fee: Current: \$35 Proposed: \$60 rate per group size: 6



Total Ops and Maint:	\$4,794.16
Deferred Maintenance:	\$1,300.00
Current Revenue:	\$245.00
Predicted Revenue:	\$700.00
Reservation Fee:	\$8.00

# Whitehawk Lookout: New Fee

## Expanded Amenity Fee

### Site Description

This rustic cabin is a 14x14-ft. room equipped with two single beds with mattresses that can be fastened together. A wood stove is available for heating and cooking. A wood counter with a shelf and a table with two chairs complete the furnishings. A vault toilet is located outside and below the lookout. The cabin is surrounded by an exterior catwalk.

### Planned Accomplishments

The district is planning for a new toilet and furniture, this lookout was completely remodeled in 2020 and has not been used as a rental.

### Site Amenities

Access road, fireplace, propane lights/modern appliances, unpaved parking, employee presence for public/resource protection, basic kitchen supplies.

### Proposed Fees:

Night Fee: Current: \$0 Proposed: \$60 rate per group size: 4



Total Ops and Maint:	\$8,000.00
Deferred Maintenance:	\$5,136.00
Current Revenue:	\$0.00
Predicted Revenue:	\$9,375.00
Reservation Fee:	\$8.00

# Report Group: Cabins \$80

Market Analysis-Other Providers    Data as of: 5/15/2024

Paddy Flat Cabin - Forest Service

Price:     \$100.00

Cabin offers up to 4 people with a refrigerator, stove/oven, flush toilets, and shower.

Idaho City Yurts - State Parks

Price:     \$115.00

Yurt offers up to 6 people with an additional fee of \$12 per person per night. Vault toilet provided.

Cozy River Cabin - Private

Price:     \$135.00

Can accommodate up to 4 people with flush toilets, running water and modern amenities.

## Current and Proposed Fee Structure

Season	Fee Per	Rate Per	Range of Current Fees	Proposed Fee	Group Size
Primary Season	Night	Group	\$0.00-\$45.00	\$80.00	6
Remarks	Proposing fee increase as \$60-\$80 over a 2-year span. Warm Springs Guard Station and Beaver Creek Cabin are open year-round.				

# Barber Flat Rental Cabin: Fee Increase

## Expanded Amenity Fee

### Site Description

The Barber Flat Cabin site was established for administrative use by the Forest Service in 1923. The current cabin and outbuildings were built by the Civilian Conservation Corps in 1935.

### Planned Accomplishments

This cabin will need an upgraded water system soon. Also, the bathroom needs to be remodeled soon.

### Site Amenities

Access road, electric/gas heat, lake/river oriented, drinking water available, running water available, trash receptacle, propane lights/modern appliances, shower, unpaved parking, employee presence for public/resource protection, basic kitchen supplies.

### Proposed Fees:

Night Fee: Current: \$40 Proposed: \$80 rate per group size: 6



Total Ops and Maint:	\$5,751.00
Deferred Maintenance:	\$4,217.00
Current Revenue:	\$4,529.00
Predicted Revenue:	\$12,500.00
Reservation Fee:	\$8.00

# Beaver Creek Rental Cabin: Fee Increase

## Expanded Amenity Fee

### Site Description

The current dwelling was built in the 1930s by the Civilian Conservation Corps using standard blueprints for that time. Beaver Creek Cabin is open year-round. It's accessible by car in the summer months and by snowshoe or cross-country skis in winter.

### Planned Accomplishments

The district is replacing all the furniture in the cabin. Also, the district is looking into replacing the wood stove and woodshed.

### Site Amenities

Access road, fireplace lake/river oriented, drinking water available, running water available, trash receptacle, electric lights/modern appliances, shower, unpaved parking, employee presence for public/resource protection, basic kitchen supplies.

### Proposed Fees:

Night Fee: Current: \$45 Proposed: \$80 rate per group size: 6



Total Ops and Maint:	\$1,476.00
Deferred Maintenance:	\$7,986.00
Current Revenue:	\$6,973.00
Predicted Revenue:	\$22,812.00
Reservation Fee:	\$8.00

# Big Trinity Cabin: Fee Increase

## Expanded Amenity Fee

### Site Description

Big Trinity Cabin sleeps six with one double bed, a sofa bed, side tables, a drop-down kitchen table, cleaning supplies, dishes and tableware, chairs and a dining table, cookware and fire extinguisher. A wood stove is available for heating and cooking.

### Planned Accomplishments

The Big Trinity Cabin will get a big remodeled. This will include new paint, roof, flooring, bathroom and kitchen.

### Site Amenities

Access road, electric/gas heat, lake/river oriented, drinking water available, trash receptacle, propane lights/modern appliances, unpaved parking, employee presence for public/resource protection, basic kitchen supplies.

### Proposed Fees:

Night Fee: Current: \$30 Proposed: \$80 rate per group size: 6



Total Ops and Maint:	\$5,845.00
Deferred Maintenance:	\$99,860.00
Current Revenue:	\$2,184.00
Predicted Revenue:	\$3,946.00
Reservation Fee:	\$8.00

# Deer Park Rental Cabin: Fee Increase

## Expanded Amenity Fee

### Site Description

Accommodates six people on a futon and two sets of bunk beds with mattresses. The kitchen is equipped with a table and chairs, propane stove, refrigerator, and a dry sink. A wood stove, garbage collection, and shed with potable water hand pump are provided.

### Planned Accomplishments

The district is replacing all the furniture in the cabin and is looking on painting the entire cabin (in and out).

### Site Amenities

Access road, fireplace, lake/river oriented, drinking water available, hand pump, trash receptacle, electric lights/modern appliances, unpaved parking, employee presence for public/resource protection, basic kitchen supplies.

### Proposed Fees:

Night Fee: Current: \$35 Proposed: \$80 rate per group size: 6



Total Ops and Maint:	\$3,599.00
Deferred Maintenance:	\$8,457.00
Current Revenue:	\$4,197.00
Predicted Revenue:	\$13,420.00
Reservation Fee:	\$8.00



# Landmark Forester Cabin: New Fee

## Expanded Amenity Fee

### Site Description

Landmark Ranger Station was established in 1924 and for years functioned as the forest supervisor’s summer office for the “old” Payette National Forest (combined with the Boise National Forest in 1944). The site consists of a ranger’s house, four cabins (only 3 will be on the rental system and the other will be used as an admin cabin), a barn, saddle shed and blacksmith shop, three garages, an office, warehouse and numerous other outbuildings that were constructed between 1924 and 1942. The ranger station has been closed for over a decade. The Forest Service’s mission is to restore the Landmark Ranger Station to its original purpose as a working Forest Service administrative site, and to adapt the ranger’s office for use as a rental cabin.

### Planned Accomplishments

The district is planning to add new furniture to this cabin.

### Site Amenities

Access road, shower, propane lights/appliances, electric/gas heat, basic kitchen supplies provided, running water available, unpaved parking, flush toilet, host or attendant present, drinking water available, tent or trailer space.

### Proposed Fees:

Night Fee: Current: \$0 Proposed: \$80 rate per group size: 4



Total Ops and Maint:	\$7,657.00
Deferred Maintenance:	\$15,005.00
Current Revenue:	\$0.00
Predicted Revenue:	\$12,500.00
Reservation Fee:	\$8.00

# Stolle Meadows Guard Station: Fee Increase

## Expanded Amenity Fee

### Site Description

The Stolle Meadow Cabin contains one double bed and one twin trundle bed with mattresses, a table and chairs, dry sink, wood stove and firewood, propane cooking stove with fuel, pots and pans, dishes, tableware, solar lights and a first aid kit.

### Planned Accomplishments

The district is replacing all the furniture in the cabin and is looking at painting the entire cabin (inside and outside). The solar powered battery system will need new batteries every 3 years.

### Site Amenities

Access road, propane lights/appliances, fireplace/wood stove heat, basic kitchen supplies provided, outdoor hand pump water source, unpaved parking, vault toilet, and drinking water available.

### Proposed Fees:

Night Fee: Current: \$40 Proposed: \$80 rate per group size: 6



Total Ops and Maint:	\$3,876.00
Deferred Maintenance:	\$11,987.00
Current Revenue:	\$6,298.00
Predicted Revenue:	\$24,400.00
Reservation Fee:	\$8.00

# Warm Springs Guard Dwelling: Fee Increase

## Expanded Amenity Fee

### Site Description

The cabin sleeps six people and comes with one double bed and three single beds with mattresses. A small couch and a wood stove are in the front room. Firewood is provided in the adjacent barn, but it may need to be split. The kitchen is equipped with a dry sink, a table with chairs, and a propane fridge and stove. Some pots and pans and a coffee pot are provided. A campfire ring and an outhouse with vault toilet are located outside the cabin. A hand pump for water is available for summer use. No water is available at the cabin in the winter, but snow can melt. No electricity is provided. Guests must bring garbage bags to pack out trash. Items like bedding, lanterns or flashlights, matches, first aid supplies, extra toilet paper and an axe are not available.

### Planned Accomplishments

This cabin will need an upgraded water system soon. The bathroom needs to be remodeled soon, and the fence needs a stain job and repair.

### Site Amenities

Gravel access road and parking, propane/lights appliances, fireplace, basic kitchen supplies, outdoor hand pump, drinking water, vault toilet, garbage receptacle, lake/river oriented.

### Proposed Fees:

Night Fee: Current: \$35 Proposed: \$80 rate per group size: 6



Total Ops and Maint:	\$3,648.00
Deferred Maintenance:	\$1,650.00
Current Revenue:	\$11,593.00
Predicted Revenue:	\$17,398.00
Reservation Fee:	\$8.00

# Report Group: Cabins \$100

Market Analysis-Other Providers    Data as of: 3/18/2024

Paddy Flat Cabin - Forest Service

Price:     \$100.00

Cabin offers up to 4 people with a refrigerator, stove/oven, flush toilets, and shower.

Idaho City Yurts - State Parks

Price:     \$115.00

Yurt offers up to 6 people with an additional fee of \$12 per person per night. Vault toilet provided.

Cozy River Cabin - Private

Price:     \$135.00

Can accommodate up to 4 people with flush toilets, running water and modern amenities.

## Current and Proposed Fee Structure

Season	Fee Per	Rate Per	Range of Current Fees	Proposed Fee	Group Size
Primary Season	Night	Group	\$0.00-\$50.00	\$100.00	4
Remarks	Proposing fee increase as \$60-\$80-\$100 over a 3-year span.				

# Atlanta 1 Cabin: Fee Increase

## Expanded Amenity Fee

### Site Description

Atlanta Guard Station is in the old mining town of Atlanta, Idaho, at an elevation of 5,800 feet. It is part of a historic ranger station compound built by the Civilian Conservation Corps and the Forest Service in 1933.

### Planned Accomplishments

The cabin has new flooring, kitchen, and bathroom. A new stove installed to have a camp host on compound and add new furniture.

### Site Amenities

Access road, electric/gas heat, lake/river oriented, drinking water available, running water available, trash receptacle, electric lights/modern appliances, shower, unpaved parking, employee presence for public/resource protection, basic kitchen supplies.

### Proposed Fees:

Night Fee: Current: \$45 Proposed: \$100 rate per group size: 4



Total Ops and Maint:	\$0,434.51
Deferred Maintenance:	\$6,885.00
Current Revenue:	\$5,060.00
Predicted Revenue:	\$13,141.00
Reservation Fee:	\$8.00

# Atlanta 2 Cabin: New Fee

## Expanded Amenity Fee

### Site Description

Atlanta Guard Station is in the old mining town of Atlanta, Idaho, at an elevation of 5,800 feet. It is part of a historic ranger station compound built by the Civilian Conservation Corps and the Forest Service in 1933. This compound, known as the Atlanta Ranger Station Historic District, is listed on the National Register of Historic Places. The roads to the cabin are generally well- maintained, although there are some rough washboard sections.

### Planned Accomplishments

The Atlanta cabin will have the inside completely remodeled this summer. The cabin has new flooring, paint, and furniture.

### Site Amenities

Access road, electric/gas heat, lake/river oriented, drinking water available, running water available, trash receptacle, electric lights/modern appliances, shower, unpaved parking, employee presence for public/resource protection, basic kitchen supplies.

### Proposed Fees:

Night Fee: Current: \$0 Proposed: \$100 rate per group size: 6



Total Ops and Maint:	\$6,241.00
Deferred Maintenance:	\$40,050.00
Current Revenue:	\$0.00
Predicted Revenue:	\$13,000.00
Reservation Fee:	\$8.00



# Johnson Creek Guard Station: Fee Increase

## Expanded Amenity Fee

### Site Description

The Johnson Creek Guard Station has two twin beds with mattresses in the loft, as well as two cots, a couch and a heater. A full-size bed is in a separate bedroom. The kitchen is equipped with a table and four chairs, an electric range and a refrigerator.

### Planned Accomplishments

The district will paint the entire cabin (inside and outside).

### Site Amenities

Access road, electric heat, lake/river oriented, drinking water available, running water available, electric lights/modern appliances, shower, unpaved parking, basic kitchen supplies

### Proposed Fees:

Night Fee: Current: \$50 Proposed: \$100 rate per group size: 6



Total Ops and Maint:	\$4,634.00
Deferred Maintenance:	\$0.00
Current Revenue:	\$5,057.00
Predicted Revenue:	\$14,400.00
Reservation Fee:	\$8.00

# Landmark South Cabin: New Fee

## Expanded Amenity Fee

### Site Description

Landmark Ranger Station was established in 1924 and for years functioned as the forest supervisor’s summer office for the “old” Payette National Forest (combined with the Boise National Forest in 1944). The site consists of a ranger’s house, four cabins (only 3 will on the rental system and 1 will be used as a Admin cabin), a barn, saddle shed and blacksmith shop, three garages, an office, warehouse and numerous other outbuildings that were constructed between 1924 and 1942. The ranger station has been closed for over a decade. The Forest Service’s mission is to restore the Landmark Ranger Station to its original purpose as a working Forest Service administrative site, and to adapt the ranger’s office for use as a rental cabin.

### Planned Accomplishments

The district is planning to add new furniture to this cabin. All the Landmark cabins were remodeled in 2018 so that the district could add them to the rental system.

### Site Amenities

Access road, electric/gas heat, propane lights/appliances, drinking water available, basic kitchen supplies provided, unpaved parking, employee presence for public/resource protection, flush toilet, shower, and running water.

### Proposed Fees:

Night Fee: Current: \$0 Proposed: \$100 rate per group size: 4



Total Ops and Maint:	\$5,973.00
Deferred Maintenance:	\$8,300.00
Current Revenue:	\$0.00
Predicted Revenue:	\$12,500.00
Reservation Fee:	\$8.00

# Landmark West Cabin: New Fee

## Expanded Amenity Fee

### Site Description

Landmark Ranger Station was established in 1924 and for years functioned as the forest supervisor’s summer office for the “old” Payette National Forest (combined with the Boise National Forest in 1944). The site consists of a ranger’s house, four cabins (only 3 will be used a rental cabin and 1 will be used as an Admin cabin), a barn, saddle shed and blacksmith shop, three garages, an office, warehouse and numerous other outbuildings that were constructed between 1924 and 1942. The ranger station has been closed for over a decade. The Forest Service’s mission is to restore the Landmark Ranger Station to its original purpose as a working Forest Service administrative site, and to adapt the ranger’s office for use as a rental cabin.

### Planned Accomplishments

The district is planning to add new furniture to this cabin. All the Landmark cabins were remodeled in 2018 so that the district could add them to the rental system.

### Site Amenities

Access road, propane lights/appliances, electric/gas heat, basic kitchen supplies provided, running water available, shower, unpaved parking, drinking water available, employee presence for public/resource protection, flush toilet.

### Proposed Fees:

Night Fee: Current: \$0 Proposed: \$100 rate per group size: 4



Total Ops and Maint:	\$5,237.00
Deferred Maintenance:	\$6,060.00
Current Revenue:	\$0.00
Predicted Revenue:	\$12,500.00
Reservation Fee:	\$8.00

# Appendix A:

## Boise National Forest – Public Comments

Forest received 95 comments with 85 being unique comments, 62 in support and 33 negative comments. All comments are listed below including duplicate comments.

Comment Number	Site Name	Comment
1	Atlanta Cabin #1	I support increasing the fees for the cabins but oppose the increase to standard campsites. Also, please get rid of rec.gov. It has been terrible with releases and permits. There has to be a better alternative. Thanks for all you do keeping our forests healthy.
2	Amanita Campground	I think this is a great use of fee increases. We need to remove hazardous trees and refurbish for future of these campgrounds. I would support any fee increases to support the long-term maintenance of our campgrounds.
3	Edna Creek Campground	Support fee increases for all of Boise National Forest campgrounds.
4	Banks River Access	Reasonable. Hope money goes to access safety improvements
5	Beehive Bend	Reasonable. Please add signs cautioning drivers of the slow vehicles entering Hwy with use of trailers
6	Big Trinity Cabin	Would rather see more basic cabins added and cheaper remodel
7	Banks Beach Picnic Area	Can't wait to see parking plans
8	Stack Rock	Coincidentally, I just parked here last weekend because every spot along bogus basin road was taken. It was a very busy weekend and even though no fee is required here, there were still parking spaces available. Imposing a fee at the upper stack rock parking lot in particular will exacerbate parking along bogus basin road because folks will try even harder to get a spot along the road where it's free. Right now, they try because it's more convenient but after a fee is imposed, they will try harder to avoid paying a fee. I strongly urge you to keep it a free area to park.
9	Stack Rock	Please don't make us pay to park here. Having a few good places where people can enjoy the outdoors and be in the mountains for free is very important and Stack Rock is the best of them. It would totally ruin a lot of people's motivation to go outside and be healthy if you have to pay a fee to do so. There are already a lot of places that you have to pay to visit. Stack rock isn't overcrowded. Even on the weekends I've never had a problem finding a place to park so adding a fee wouldn't even be solving a full parking problem. It would just annoy the people that drive all the way up there to have a fun/tranquil day in the trees. If you want more money, create an online merch store and promote it so people can buy hoodies and stickers.
10	Stack Rock	I frequently use this trailhead for mountain biking access, usually with my kids (ages 11-4). The fee will encourage people to park dangerously along Bogus Basin and squeeze cars off the edges of the small lower lot. While the refreshed paint would be welcomed, it's certainly not worth a fee.
11	Stack Rock	I am writing to express my concerns about the proposed day use fee for the Stack Rock Trail parking area. While I understand the need for revenue to maintain our national forests, I believe a fee at this location could have unintended consequences. I believe there is a possibility that a day use fee may lead and encourage visitors to park along the road or unauthorized areas. This could create dangerous road conditions, potentially damage the surrounding environment, and upset private landowners around the current parking location. I also believe that the proposed day use fee might keep some of our income-disadvantaged community members from being able to recreate themselves in a popular, shady,

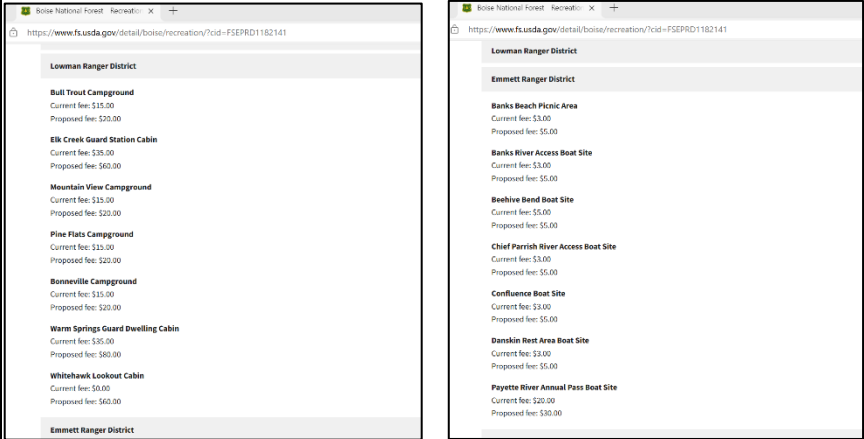
		day-use area that is very near to town therefore making outdoor recreation even less accessible. I appreciate the Forest Service's efforts to maintain our public land. I would be happy to discuss my concerns further and work towards an alternative solution.
12	Stack Rock	I use the parking area several times each season for mountain bike access and would have no issue paying \$5/visit to help maintain.
13	Stack Rock	I appreciate the opportunity to purchase a seasonal pass. I am not sure what the fees will be used for. Could we get specifics on how the fees that are paid to use a location benefit that location?
14	Confluence	I'm not buying the argument that we need increased fees for these sites, any of them. You have many more people using them therefore you are receiving much more money. There is very little to maintain, this is simply a money grab, stop it!
15	Mountain View Campground	Raise the fees as needed. I am seeing this campsite annually and have an interest in it being maintained and improved.
16	Stack Rock	Do not charge a fee just to hike stack rock
17	Amanita Campground	A \$20 per night fee adds up quickly when staying multiple nights. Has a study been conducted identifying who uses the site? Non-Idaho residents should pay more than residents and they should have to pay a higher reservation fee.
18	Stack Rock	Please do not charge a fee for parking here. It's a small parking area and there are not enough amenities to justify a fee. The majority of use is the Stack Rock trail, if you charge a fee, this will push people to park lower and put strain on the lower off road parking areas. \$5 to ride or hack Stack Rock is crazy. The only way I would support a fee is if you plow it in the winter for snowshoes and fat bike parking. Thank you.
19	Stack Rock	This will just cause the lower parking lot and street parking to get way more congested. I never use stack rock upper lot, but incentivizing people to park elsewhere will be annoying for us locals that don't use it.
20	Stack Rock	I don't support a parking fee that is specific to this location. Either charge for people to park everywhere in the Forest or nowhere. It is true that there are more services at this spot, but if a charge is levied only here it will just encourage people to park in unsafe places in other nearby areas.
21	Stack Rock	I can see the value in having a yearly fee available, but would like to see the parking lot be open all winter for offloading some snowshoe parking
22	Stack Rock	<p>Some clarification would be helpful, so I have a couple of questions.</p> <ol style="list-style-type: none"> <li>1. Would the parking fee be in addition to or included in the annual inter-agency pass?</li> <li>2. How would you envision enforcing this provision? I.e., would one need to leave their pass on their dash or similar?</li> </ol> <p>Generally not opposed, simply recommend sorting out details of process, and communicating it clearly, so that it is clear for everyone. This is a very popular area, so costs for upkeep are fair. The recent renovation is very nice!</p>
23	Stack Rock	I am a frequent user of Stack Rock and adjacent trail systems. While I understand the need for fees to recoup costs for frequently used trailheads, I do not support a fee at the upper Stack Rock trailhead. I feel that a fee would encourage more people to park along Bogus Basin Rd to avoid the fee. On busy days this would create even more congestion and put pedestrians or cyclists along the road at greater risk. More people may choose to park at the lower trailhead which is already chaotic with vehicles parked along the road. I do not think a parking fee is an answer at this location.
24	Big Trinity Lake Campground	Given the isolated character of the site, an increase is appropriate to cover increased costs for maintenance.
25	Dog Creek Campground	With the high demand for sites in the area and rising maintenance costs, this increase is appropriate.



25a	Ice Springs Campground	<u>Duplicate Comment/Commenter</u> - No maintained sites should be without a fee. Adding one makes sense and is appropriate.
25b	Bonneville Campground	<u>Duplicate Comment/Commenter</u> - With the heavy use and maintenance needed to keep up w that use, an increase in fees is appropriate.
25c	Landmark South Cabin	<u>Duplicate Comment/Commenter</u> - No maintained site should be without a fee. This proposed addition of a fee, which increases a ladder over 3 years, is appropriate.
25d	Landmark Forester Cabin	<u>Duplicate Comment/Commenter</u> - No maintained site should be without a fee. This proposed addition of a fee, which increases a ladder over 3 years, is appropriate.
26	Stack Rock	While I am in favor of creating additional revenue sources that help our rangers ensure that our forests, trails, parks, and campgrounds are maintained for all to enjoy, I think that charging for parking will discourage the average day hiker from enjoying trails such as these, rather than promoting a love for the outdoors. Part of what makes Stack Rock enjoyable is that it's a free hike, that's easily accessible after a workday. Instead of charging a fee for parking, selling Boise National Forest merchandise, that can bring awareness to ways of improving our wonderful outdoors. The Boise Outdoor community already are avid collectors of stickers, shirts, hats, and many other types of merchandise. I can almost guarantee that if they knew what the funds from this were going towards, they'd be more than happy to buy merchandise in support of this, rather than paying for parking every time they went on a hike. Or even encourage people to buy annual parking stickers in the same way that we buy Idaho Park stickers for our vehicles.
27	Stack Rock	I feel our taxes should go towards the parking fee.
28	Stack Rock	I would strongly recommend against imposing a fee for this site during the summer. Since there are multiple other parking locations along Bogus Basin Road, imposing a fee will discourage recreationalists from using this trailhead. I believe this will cause more congestion/double parking as a whole and lead to a less safe experience for everyone. If the forest service could keep this lot open (and plowed/sanded) during the winter, I think this would provide a great service to the outdoor community, because winter parking on Bogus Basin Road is very limited (no parking allowed in paved turnouts). Further, I think the community would be happy to pay winter fees due to the need for plowing and the expansion of winter access.
29	Beaver Creek Rental Cabin	I think that fee increases for the forest service cabins are warranted and reasonable. The rates have been extraordinarily low for years. While it is nice to keep these cabins affordable, I think reinvesting rate increases would be an overall greater benefit to the community and could possibly make it easier for prospective guests to find a reservation, since the cabin has been underpriced for years.
30	Grayback Group	I would rather not see a drastic increase in the cost. The facilities are great without adding anything else in that will raise the price. I am opposed to the idea of combining the two camp sites. This is a spot that can be used by two different groups with a central bathroom. It is one of our favorite spots for larger group activities, and we have taken turns booking it. Groups don't always have enough people to justify using both sides, and by keeping them split it will allow more people and smaller groups access to an incredible spot.
31	Johnson Creek Guard Station	The fee increase for the Johnson Creek Guard Station is improper as it does not comply with 16 USC Ch. 87, Section 6802, subsection (b)(1) and (b)(3) as shown below as the bathroom in this cabin is not ADA compliant. The current fee is commensurate with the benefits this cabin provides as it is currently configured. At the proposed increased fee of \$100 per night, other cabins in the area have ADA compliant bathrooms. For reference: 16 USC Ch. 87: FEDERAL LANDS RECREATION ENHANCEMENT

		<p>Section 6802. Recreation fee authority</p> <p>(b) Basis for recreation fees</p> <p>Recreation fees shall be established in a manner consistent with the following criteria:</p> <p>(1) The amount of the recreation fee shall be commensurate with the benefits and services provided to the visitor.</p> <p>And (3) The Secretary shall consider comparable fees charged elsewhere and by other public agencies and by nearby private sector operators.</p>
31a	Barber Flat Rental Cabin	<p><u>Duplicate Commet/Commenter</u> - The fee increase for the Barber Flat Cabin is improper as it does not comply with 16 USC Ch. 87, Section 6802, subsection (b)(1) and (b)(3) as shown below as the bathroom in this cabin is not ADA compliant and the cabin is infested with mice, and it does not have electricity. The current fee is commensurate with the benefits this cabin provides as it is currently configured.</p> <p>For reference:</p> <p>16 USC Ch. 87: FEDERAL LANDS RECREATION ENHANCEMENT</p> <p>Section 6802. Recreation fee authority</p> <p>(b) Basis for recreation fees</p> <p>Recreation fees shall be established in a manner consistent with the following criteria:</p> <p>(1) The amount of the recreation fee shall be commensurate with the benefits and services provided to the visitor.</p> <p>and</p> <p>(3) The Secretary shall consider comparable fees charged elsewhere and by other public agencies and by nearby private sector operators.</p>
31b	Deer Park Rental Cabin	<p><u>Duplicate Commet/Commenter</u> - The fee increase for the Deer Park Cabin is improper as it does not comply with 16 USC Ch. 87, Section 6802, subsection (b)(1) and (b)(3) as shown below as the bathroom facility is only a vault toilet, it does not any indoor plumbing for water, and it does not have electricity. The current fee is commensurate with the benefits this cabin provides as it is currently configured.</p> <p>For reference:</p> <p>16 USC Ch. 87: FEDERAL LANDS RECREATION ENHANCEMENT</p> <p>Section 6802. Recreation fee authority</p> <p>(b) Basis for recreation fees</p> <p>Recreation fees shall be established in a manner consistent with the following criteria:</p> <p>(1) The amount of the recreation fee shall be commensurate with the benefits and services provided to the visitor.</p> <p>And (3) The Secretary shall consider comparable fees charged elsewhere and by other public agencies and by nearby private sector operators.</p>
31c	Warm Springs Guard Dwelling	<p><u>Duplicate Commet/Commenter</u> - The fee increase for the Warm Springs Guard Dwelling Cabin is improper as it does not comply with 16 USC Ch. 87, Section 6802, subsection (b)(1) and (b)(3) as shown below as the bathroom facility is only a vault toilet, it does not any indoor plumbing for water, and it does not have electricity. The current fee is commensurate with the benefits this cabin provides as it is currently configured.</p> <p>For reference:</p> <p>16 USC Ch. 87: FEDERAL LANDS RECREATION ENHANCEMENT</p> <p>Section 6802. Recreation fee authority</p> <p>(b) Basis for recreation fees</p> <p>Recreation fees shall be established in a manner consistent with the following criteria:</p>

		<p>(1) The amount of the recreation fee shall be commensurate with the benefits and services provided to the visitor.</p> <p>and</p> <p>(3) The Secretary shall consider comparable fees charged elsewhere and by other public agencies and by nearby private sector operators.</p>
31d	Big Trinity Cabin	<p><u>Duplicate Comment/Commenter</u> - The fee increase for the Big Trinity Cabin is improper as it does not comply with 16 USC Ch. 87, Section 6802, subsection (b)(1) and (b)(3) as shown below as the hand pump water supply is over 150 yards from the cabin, the bathroom facility is only a vault toilet, it is not ADA compliant, and it does not have electricity. The current fee is commensurate with the benefits this cabin provides as it is currently configured.</p> <p>For reference:</p> <p>16 USC Ch. 87: FEDERAL LANDS RECREATION ENHANCEMENT Section 6802. Recreation fee authority</p> <p>(b) Basis for recreation fees</p> <p>Recreation fees shall be established in a manner consistent with the following criteria:</p> <p>(1) The amount of the recreation fee shall be commensurate with the benefits and services provided to the visitor.</p> <p>and</p> <p>(3) The Secretary shall consider comparable fees charged elsewhere and by other public agencies and by nearby private sector operators.</p>
31e	Banks River Access	<p><u>Duplicate Comment/Commenter</u> - I submitted these same comments by email to SM.FS.boise_inbox@usda.gov but want to make sure that they are included so I am submitting them on the web site form too. Comments on fee increases to the following recreational sites:</p> <ul style="list-style-type: none"> <li>Banks River Access Boat Site</li> <li>Beehive Bend Boat Site</li> <li>Chief Parrish River Access Boat Site</li> <li>Confluence Boat Site</li> <li>Danskin Rest Area Boat Site</li> <li>Payette River Annual Pass Boat Site</li> </ul> <p>I am objecting to any fee increases to these sites for the following reason. It appears that you do not have the statutory authority to collect ANY fees at the sites listed above under 16 USC Ch. 87, Section 6802, subsection (f)(4)(D) as none of the sites listed above contain all of the amenities listed in subsection (f)(4)(D). In particular, none of these sites provide (iii) A permanent trash receptacle, or (vi) Security services. In addition, Banks Access Boat Site and Danskin Rest Area Boat Site do not provide (v) Picnic tables.</p> <p>For reference:</p> <p>16 USC Ch. 87: FEDERAL LANDS RECREATION ENHANCEMENT Section 6802. Recreation fee authority</p> <p>f) Standard amenity recreation fee</p> <p>Except as limited by subsection (d), the Secretary may charge a standard amenity recreation fee for Federal recreational lands and waters under the jurisdiction of the Bureau of Land Management, the Bureau of Reclamation, or the Forest Service, but only at the following:</p> <p>(4) An area—</p> <ul style="list-style-type: none"> <li>(A) that provides significant opportunities for outdoor recreation.</li> <li>(B) that has substantial Federal investments.</li> <li>(C) where fees can be efficiently collected; and</li> <li>(D) that contains all of the following amenities: <ul style="list-style-type: none"> <li>(i) Designated developed parking.</li> <li>(ii) A permanent toilet facility.</li> </ul> </li> </ul>

		<p>(iii) A permanent trash receptacle.  (iv) Interpretive sign, exhibit, or kiosk.  (v) Picnic tables.  (vi) Security services.</p> <p>I also want to note that neither the Deadwood Boat Launch Site nor the Deer Creek Boat Launch Site are listed on the Forest Service web site (<a href="https://www.fs.usda.gov/detail/boise/recreation/?cid=FSEPRD1182141">https://www.fs.usda.gov/detail/boise/recreation/?cid=FSEPRD1182141</a>) for fee increases or public comment, thus these two sites should not be subject to any fee increases as they did not follow the process for public comment. See attached screen captures of the web site.</p> 
32	Stack Rock	<p>Hello, I am cautiously in support of the proposed day use fee at the Stack Rock Trailhead with a few reservations/concerns listed below.</p> <ol style="list-style-type: none"> <li>1. The Service should strongly consider the effects this proposed fee will have on nearby areas which will not have a day use fee. These areas will likely see congestion as recreators seek a work-around to the day use fee. Most notable of these locations is the lower trailhead located directly off Bogus Basin Rd. Other areas that seem likely to be affected are the former trailhead (located just downhill of the turn-off for the recreation site), the nearby slow vehicle turnouts, the area at and around the intersection of Bogus Basin Rd and FS Rd 275, and the area at and around the intersection of Bogus Basin Rd and FS Rd 297a.</li> <li>2. The Service should clarify what is included in "interagency passes" which are honored in this proposal.</li> <li>3. This proposal represents the only trailhead where a fee is required anywhere in the Ridge to Rivers trail system. The Service should strongly consider the effects this may have on recreation dispersal across the trailheads on Bogus Basin Rd.</li> <li>4. This proposal is likely to be met with public opposition if implemented. The Service should strongly consider implementing a proactive, transparent, and educational outreach program to ensure users understand the benefits of this fee and are more likely to comply. Beginning outreach well in advance of implementation may be beneficial.</li> </ol>
33	Greater Boise Recreationalist Group Meeting	<p>The Story Map was very helpful. I have camped at, stayed in or rented at many of these sites over the last 23 years. I have seen increased use and stress in facilities and increased resource damage. I believe that the fee increase will help enhance recreation experiences and better protect the resources. I support the fee increase.</p>
34	Greater Boise Recreationalist Group Meeting	<p>I agree with increasing the fees to the breaking point. It wouldn't belong before today's break-even fee will not meet the cost. The fees are important to maintain our trails and campgrounds. Better to increase the fees to meet the cost of maintenance once then to need to increase another time.</p>



35	Greater Boise Recreationalist Group Meeting	I support fees to cover costs but please consider the impact of charging at Stack Rock to the lower Stack Rock parking and Bogus Basin road.
36	Greater Boise Recreationalist Group Meeting	Yes- It's about time.
37	Greater Boise Recreationalist Group Meeting	Proposed fees all seem reasonable and beneficial to the impacted use areas.
38	Collected at Edna Creek CG	I understand that it takes more money to maintain facilities. Edna Creek Campground is a very nice campground and is well maintained. Fee increase is a fact of life.
39	Ten Mile Campground	It is a nice calm campground with one toilet, which was clean. The fee is ok since there is no water and no waste disposal. The only negative aspect is the very little distance to the road. The sites next to the stream are calm.
40	Black Rock Campground	I'm all for it. It goes where it needs to go for the people to enjoy their time here.
41	General	I really think this is important and a good use of funds. I just wanted to propose an additional pay fee site and restroom at trail creek hot springs on warm lake road. I hope it happens before it has to shut down someday due to all of the use and traffic it receives. It's a beautiful place and I think the Kiraham is a good example or others along that highway. Thank you for taking public comments and for your commitment to care for our beautiful forests and public spaces.
42	General	I fully support the fee increases. The Boise National Forest is a great resource and has been very cheap to enjoy. We need more campsites within a 2 - 3-hour drive from the Treasure Valley. I am glad to hear Beehive Bend is being improved.
43	General	I support the fee increase. Increase it enough to hire more rangers so that they can manage, watch and regulate these people trashing our lands. Please DO NOT use the increase funds for upgrades. And leave the roads roughs.
44	General	What good news that the fees to use campgrounds and cabins may be increased! I am all for it; so many need improvements, especially some of the guard cabins. The fee increases look reasonable; I am behind you 110%. I suppose some should stay more inexpensive for the lower income people. And I suppose the fee increases are also supporting those of us who use our America the Beautiful passes. Thank you for considering fee increases!
45	General	I'm writing to give feedback about your fee increases for recreational sites in the Boise National Forest. I have reviewed the proposed increases at the various sites, and I have the following comments: • In general, I think the fee increases are warranted and reasonable. It's important to maintain the existing recreational facilities and add new campsites whenever possible. • At sites such as Rainbow Point and Amanita, will people who are staying in the campgrounds be required to pay the additional fee at the boat ramp, or will they be able display their receipt for the campground fee in order to have free usage of the boat ramp area? • I suggest that you offer an annual pass similar to the Idaho State Parks Pass to cover the fees for day-use areas, boat ramps, and trailheads. The pass would be helpful because users might not have the right amount of cash to pay fees at these sites. If the pass were sold for a reasonable amount, people would likely buy the pass rather than paying the individual fees. Then if the pass holders visit only one or two sites in a season, the income would be greater than the individual fees. • As a long-time Idaho resident and frequent visitor to the National Forests, I have been dismayed and frustrated to discover that reserving a site at our favorite Idaho campgrounds is like playing the lottery. We make a plan to be logged into Recreation.gov on the morning of the day when the reservation window opens. At

		7:59am, we start counting down the seconds to 8:00am. We are ready to click the button to reserve the site only to be beat out by another user. This experience has been repeated quite frequently over the past few years. An idea might be to create a subscription-based "Premier Campers' Club" that would give members access to an advanced reservation window. I would be willing to pay as much as \$100 for an annual membership that would allow me to make early reservations at any National Forest Campground in Idaho. I understand that a system like this would require programming changes to Recreation.gov and that might make it difficult to implement, but this could be an untapped revenue stream. Thanks for all you do to enable us to enjoy nature in our beautiful Idaho forests.
46	General	I am happy to see an increase in fees as we need to be able to properly maintain these areas for future generations. I wouldn't have a problem increasing the fees another \$5.00
47	General	I am writing to express my support for raising fees for campgrounds/cabins/day use areas on the Boise National Forest. As an avid hiker, backpacker, volunteer for trail maintenance, and outdoor enthusiast I see and appreciate the need for maintenance and upgrades to our recreation sites. I've reviewed the proposed fees to each of the areas and feel the increases are reasonable and necessary. I heard a comment on a recent news report, that the fees were "too high", which I find ridiculous given the amount of money I see driving down the roads of folks hauling their RVs. If they can afford the RVS, they can certainly afford a few extra \$\$ to help support the campgrounds they wish to visit. (But that's just me.) On another note, I would like to propose the posting of the "Leave No Trace" and/or "Pack it In, Pack it Out" principles at campground sites. I am appalled at how much trash people leave behind- even in the Wilderness!!! My siblings and I grew up camping and were taught at a very young age to leave our campground cleaner than we found it. Again, I fully support the fee increases.
48	General	I'd like to voice my SUPPORT for all of the proposed fee increases for recreational sites in the Boise National Forest, as outlined in the recent notice. I've always felt that the people who utilize the specific resources in our National Forests (cabins, parking lots, boat/raft launch sites, etc.) should pay for use of those sites. I realize that the general funds that are used for National Forests are already our tax dollars, but a user-generated fund, paid specifically by those people who utilize a specific site, is only fair. Thanks for all you do.
49	General	I feel the fee increases at campgrounds is a great idea. It's been a long time since there has been an increase. Repairs, maintenance, and improvements would be much appreciated. Of course, some will balk at the price increases but I bet the campgrounds will still be busy.
50	General	In full disclosure: I am a former USFS employee, now weekly user of nearby public lands. Primarily dispersed use, but also day use and developed rec sites. I am writing to express my <b>emphatic support of proposed fee increases</b> across the forest. Even prior to COVID—but certainly amplified in the years since—my impression is there have been huge increases in visits and pressure on public lands without associated increase in federal funding. This is a multi-dimensional problem, but the solution is more money needs to make it to agencies to continue to steward their use. Absolutely users of developed sites should contribute to their upkeep with these fees. I have full confidence in the managers at Boise NF to pick the correct level of fee increase to financially support their important work. Thank you.
51	General	Idaho is a wonderful state that deserves to be preserved and well maintained...I am in favor of the campsite fee hikes, from \$15 to \$20. A Group camp fee increase is also supported, but I think the increase from \$100 to \$250 may be too much, I would support an increase to \$200. Thanks to your hardworking staff who help keep our great state at the top of the list.

52	General	Just a quick comment. I am in favor of fee increases. My only reservation is that the increases for some locations seem a bit much. Example: a no fee cabin increasing to \$100. It's too much. A no fee campground increasing to \$20. Too much. I enjoy Little Roaring campground, currently it's slated to increase from \$0 to \$20. I feel that \$5 increases for campgrounds and facilities, with a current fee, is appropriate. I also feel that a 40-50% reduction in the proposed fees, for current no fee locations, would be more reasonable. My concern is that the increased fees will not generate the income expected because users will simply refuse to pay or not utilize the locations as the prices are fairly high. The Forest Service campgrounds have always been a very affordable way for people to experience the outdoors. In the current economy, these fees could prevent some segments of the population from being able to afford a weekend trip.
53	General	We have been actively using the Boise National Forest for over 40 years. Every activity: camping, cutting firewood, collecting Christmas trees, hunting, fishing etc. We so appreciate the affordability of using the national forest. We also have seen the effect of overuse of the forest. As this requires more action by the rangers, the camp hosts, everyone associated with the forest. The proposed increases seem reasonable and fair. Please make sure that the increases are adequate to cover the needed maintenance activities, as we want the forest here for the next hundred or two years.
54	General	I think it's time for an increase. Like everything else from water, electricity and labor fees everything has gone up. I would be willing to pay additional fee to maintain our parks and recreation area's
55	General	I fully support any and all fee increases for all proposed sites. Hopefully if people pay something more in line with the current times, they'll take better care of the sites, and it will help fund maintenance.
56	General	I think it's time for an increase. Like everything else from water, electricity and labor fees everything has gone up. I would be willing to pay additional fee to maintain our parks and recreation area's
57	General	We have used forest service campgrounds for 30+ years. I believe a modest \$5 increase is reasonable. We enjoy clean well-kept campgrounds are imperative. Thank you for your service and hospitality
58	General	Please increase the fees to aid the support and maintenance of our Idaho campgrounds and public spaces.
59	General	As an avid outdoorsman I see the need for clean recreational areas including restrooms and trash collection, however I do not think that every recreation site needs to be flattened out and made easy to access by motorhomes, trailers and other large vehicles. I understand if there is a need to repair/replace existing structures and access points, but I don't believe that money needs to be spent on making nice and slightly more rugged campgrounds, which are enjoyed by tent campers, more accessible for RV's and trailers. In short if slight increases need to be made to preserve areas, then by all means go ahead, but if it is flatten them out for RV/trailer pads please reconsider what makes camping enjoyable, and that is not hearing a bunch of generator powered RV's/trailers while one is trying to enjoy the outdoors.
60	General	We are fortunate to have so many campgrounds. Some are free, that's even better. The forest service works all year to keep us safe and provide access to nature. I have no problem with campground fees. I just hope people will be respectful and take out what's left of what they bring in!
61	General	Please charge whatever is needed to keep the campgrounds enjoyable. Thank you.
62	General	Here's an idea. Why don't we raise the fee for out of state people that clog up our campsites by 3x to account for the revenue? Every campground I go to I am

		parked next to a California, Montana, Texas, Wyoming, Oregon, Washington, etc. How about the state taxpayers get a benefit for what they are protecting and the out of staters contribute to our economy rather than just feasting off of the resources we have defending in our state. This is ridiculous. If they have an out of state license, charge them triple, AND THEN, if it's an Idaho state license, let us pay whatever regular fee you are proposing. These states pay higher for their stupid regulations and Idahoans have to suffer because of it. Stop. Screwing. Over. The. Idahoans. I'm sick of this crap!
63	General	I support fee increases at all Boise National Forest campgrounds.
64	General	As a user of Bull trout, Bonneville, and other Forest Service campgrounds I am all for the fee increases. But I BEG of you to also consider two more changes: 1. Please have your hosts enforce the No Show rule clearly outlined on the Recreation.Gov website we all read when we make our reservations. The Bull trout host is especially awful about leaving a reserved site empty for a week or more if someone else had it reserved but never shows. The person reserving the site knows the rules and they never show up after the 24-hour cutoff! I would never expect my site to be held for three days before I finally showed up for the weekend. Meanwhile, people drive in and see empty sites they cannot use. Considering how extremely hard it is to get sites anymore; this rule needs to be enforced! 2. With such a high demand for sites and so few people being lucky enough to win the cutthroat reservation contest, please consider limiting the number of days someone can stay in a site to just one week. Also, the host at Bull trout needs to not let people who book a campsite for two weeks leave to go back to Boise for 2-3 days mid-reservation. More rules they allow to be broken!
65	General	While I understand the increase of user fees due to usage, inflation, and maintenance cost. I would like to see a program that allows user of lower social economic class be able to access the sites at a lower cost. Our forest should be accessible to everyone. I use these sites quite often and don't mind paying the fees and playing the reservation games but for others this is becoming quite expensive and taxing to use these services.
66	General	Increasing fees makes sense, with the number of years since increase is in its own impressive. With the increase of population, it just makes sense, everyone should contribute.
67	General	Please please make people pay for camping on grime's creek! They leave it looking worse and worse every weekend they basically move in. Leaving trash everywhere leaving tents set up all week long so they can come back on the weekends. Something needs to be done I'm tired of trying to go fishing and finding more trash than fish.
68	General	We support the fee increase and investment in our parks.
69	General	I believe a fee increase is long overdue, and I fully support it. Thanks for asking. I am a native Idahoan, and the increase is population, and use supports a fee increase.
70	General	I am in support of the fee increase if part of the increase involves an increased presence of LEO/other staff to enforce rules and ensure the fees are actually being paid by users. I have seen the increase in use of these sites and the impact done by large amounts of users that do not care to be good stewards of the environment. Thank you so much
71	General	I have been an avid camper in Boise National Forest since 2007 and I support the proposed fee increases. Our campgrounds are lovely and well-maintained and make it possible for individuals and families of all types to enjoy the outdoors. Even at the new higher rates, camping remains one of the lowest-cost weekend adventures we can enjoy.



72	General	I feel the fee increase is reasonable. What would be the discount for those that get the America beautiful pass? As well as senior AARP passes? It would be nice to see a seasonal pass created for camping fees. I would invest in that yearly. Like 100.00-200.00 year gets you free overnight camping in national Forest camp sites. As another option.
73	General	I don't have a problem with your proposed fee increases. That you held fees for 26+ years is amazing. And the proposed fees should not pose a hardship to most of those who use the campgrounds/day use areas.
74	General	Re increase camping fees: Do what is necessary, but it is just like our housing situation. Native Idahoans cannot compete with all the money that is coming in with Californians, etc. We camp, but with an Idahoan PERSI retirement we will just camp less! We have experienced hot campfires and litter in the campsites we have gone to in the last two years. NOT IDAHOANS! Enough said
75	General	Although I don't have a problem with mild fee increases for camping and cabins, I am bothered by fees at trailheads and day use areas. Some years back they tried this in the Sawtooths. I was there with family from out of town. We wanted to stop briefly to at Redfish Lake. We had 2 vehicles. Fees for a brief stop to look around seemed excessive. We also went on a short hike (very short because we had small children.) They wanted another fee at the trailhead for each vehicle. It could have turned into a very expressive 1/2 day had we not ignored some of the fees. They were later rescinded.
76	General	No, the citizens of the United States pay enough in taxes as it is. Instead of raising fees the US Forest Service and all other federal agencies need to control their spending. Talk to congress, ask them to stop funding foreign wars. Use the taxpayer's money for tax payer purposes.
77	General	We own a cabin up Middlefork Rd in Garden Valley & spend much time up north of us. Increasing camping fees are much needed no doubt but will cause more campers to camp in non-designated free areas, leaving way more trash & human waste behind. NO ONE cleans up after these campers who camp 'wherever' & don't pack out their trash or bring a porta potty. Such a mess, with no time limits for staying in undesignated campgrounds. Some public restrooms built along Middlefork road before the campgrounds, would be helpful. Signage & more staff policing the area may be helpful. Its only gonna get worse with the population of Boise valley growing.
78	General	I understand the need for increased rates, particularly with the increased usage. However, a 150% increase at Grayback is extraordinary. Even the 33% increase at Big Trinity Lake is impactful. Is there a way to break down these increases into smaller chunks on an annual basis?
79	General	I can understand with the economy the way it is; you need to come up with a way to keep up. However, I ask that you consider you might be pricing a lot of people out of being able to afford camping. I grew up with my parents loving to go camping so we went often. It was some of my most fond memories. I have been looking forward to taking my grandkids camping, but I don't often have extra money to do it. Please just consider this before you make any big fee changes.
80	General	Please do not raise fees!
81	General	I do not support a fee increase; the American people are already struggling enough.
82	General	After looking at the proposed fees across the board I would have to say they are too high. I understand the need for an increase however the forest needs to be affordable to all. I would say that anything that is currently free remains free. And take the increase that you're proposing and cut that by 3/4.
83	General	I have been camping there for 50 years. I just spent a week at sage hen with 4 vehicles. We were told that you plan on closing the campground for a year for

		improvements. in my opinion you are destroying one of the best places in Idaho. Now everyone with their 40ft trailers and generators are going to ruin it. I paid 500 dollars for five days. I think that is paying too much already
84	General	I strongly oppose the increased fees that are being proposed as most of the increases exceed a reasonable amount. The cost of these improvements should have been included in the 2025 budget request already funded by taxpayers or allocated by the 2021 Bipartisan Infrastructure Law and Inflation Reduction Act. To increase some of these fees by more than 100% for a perpetual time period is outrageous and a clear sign that the USFS does not know how to manage its resources.
85	General	I just heard the disturbing news of the raising of campsite prices. We have always stayed at Bull Trout and enjoyed this campground. There are no services like water or electricity, so we have to bring our own water and use a generator. Your prices are very reasonable and encourage you to not raise prices for instate residence. I do, however, encourage you to raise the out-of-state prices. Oregon and Washington have an out-of-state price. I have experienced on several occasions no available campsites due to out-of-state campers. You are raising the out of state fee will bring in more revenue and, hopefully, allow Idaho residents more campsite availability. Please don't punish us Idahoans who have always enjoyed camping in Idaho by raising fees. The group campsites at Bull Trout are plenty expensive as it is.