



# United States Department of the Interior



BUREAU OF LAND MANAGEMENT  
Winnemucca District Office  
5100 East Winnemucca Boulevard  
Winnemucca, Nevada 89445  
Phone: (775) 623-1500 Fax: (775) 623-1503  
Email: [wfoweb@blm.gov](mailto:wfoweb@blm.gov)  
<https://www.blm.gov/office/winnemucca-district-office>

In Reply Refer To:  
8372 (NVW030.13)

## Notice of Temporary Closure Order

**OFFICE:** Black Rock Field Office / Winnemucca District Office

**ACTION:** Temporary Closure

**SUMMARY:** The Bureau of Land Management Black Rock Field Office announces the temporary closure of certain public lands under its administration from 12:01 AM July 24, 2025, to 11:59 PM October 5, 2025, for the 2025 Burning Man Event. This action is taken to minimize risk to the public and resources on the Black Rock Desert Playa during pre-event construction, event operations, and post-event clean up and is in effect for 74 days under a Special Recreation Permit (SRP).

This Closure Order supersedes Federal Register **BLM\_NV\_FRN\_MO#45001710000**

The temporary closure is located within the Black Rock Desert-High Rock Canyon Emigrant Trails National Conservation Area. The closure will be implemented in two phases based upon the Event operations: the Phase 1 Closure covers approximately 9570 acres, while Phase II covers 14,320 acres. together the temporary closures include portions of the Black Rock Desert Playa and the 8-mile playa entrance. The West Highway of the Playa will remain open for moving traffic.

The two-phase temporary closure area is in Pershing County, Nevada, and is necessary for the period of time because of the Burning Man event. The event's activities begin with the golden spike, fencing the site perimeter, Black Rock City setup (31 days), followed by the actual event (9 days), Black Rock City tear down and cleanup, and final site cleanup (34 days). This event is authorized on public land under Special Recreation Permits.

The public temporary closure area comprises about 33 percent of the Black Rock Desert playa. Public access to the other 67 percent of the playa outside the temporary closure area will remain open to dispersed recreational use.

**The following restrictions will be in effect for the duration of the closure.**

Unless otherwise authorized, the following activities within the closure area are prohibited:

- Public access to the closure area.
  - Public use of the 8-mile entrance from August 17, 2025 – September 3, 2025.
  - Phase 1 area on the Black Rock Desert Playa from July 24, 2025 – August 17, 2025, and September 7, 2025 – October 6, 2025.
  - Phase 2 area of the Black Rock Desert Playa August 19, 2025 – September 6, 2025.
- Parking any vehicle in violation of posted restrictions, or in such a manner as to obstruct or impede normal or emergency traffic movement or the parking of other vehicles, create a safety hazard, or endanger any person, property, or feature. Vehicles so parked will be subject to citation, removal, and impoundment at the owner's expense.
- Operating a vehicle through, around, or beyond a restrictive sign, recognizable barricade, fence, or traffic control barrier or device.

## **TEMPORARY RESTRICTIONS**

### ***A. Environmental Resource Management and Protection***

- (1) Fires/Campfires: The ignition of fires on the surface of the Black Rock Desert playa without a burn blanket or burn pan is prohibited. Campfires may only be burned in containers that are sturdily elevated six (6) inches above the playa surface and in a manner that does not pose a risk of fire debris falling onto the playa surface. Plastic and nonflammable materials may not be burned in campfires. The ignition of fires other than a campfire is prohibited. This restriction does not apply to events sanctioned and regulated as art burns by the event organizer.
- (2) Fireworks: The use or possession of personal fireworks is prohibited except for uses of fireworks approved by the permit holder and used as part of a Burning Man sanctioned art burn event.
- (3) Grey and Black Water Discharge: The discharge and dumping of grey and black water onto the playa/ground surface is prohibited. Grey water is defined as water that has been used for cooking, washing, dishwashing, or bathing and/or contains soap, detergent, or food scraps/residue, regardless of whether such products are biodegradable or have been filtered or disinfected. Black water is defined as wastewater containing feces, urine, and/ or flush water.
- (4) Human Waste: The depositing of human waste (liquid and/or solid) on the playa/ground surface is prohibited.
- (5) Trash: The discharge of any and all trash or litter onto the ground/playa surface is prohibited. All event participants must pack out and properly dispose of all trash at an appropriate disposal facility.

- (6) **Hazardous Materials:** The dumping or discharge of vehicle oil, petroleum products, or other hazardous household, commercial, or industrial refuse or waste onto the playa surface is prohibited. This applies to all recreational vehicles, trailers, motorhomes, port-a-potties, generators, and other camp infrastructure.
- (7) **Fuel Storage:**
- (a) The storage of greater than 110 gallons of liquid fuel in a single camp is prohibited. For purposes of this restriction, LP-Gas is not considered liquid fuel and must be stored separately from liquid fuel.
  - (b) Fuel tanks that are not purpose-built auxiliary tanks may not be incorporated into fuel systems for the purpose of circumventing the 110-gallon liquid fuel limit.
  - (c) Each camp storing liquid fuel must establish a designated fuel storage area at least ten (10) feet apart from combustible materials, vehicles, camp trailers/RV's, generators, and any sources of ignition (such as burning cigarettes, open flame, electrical connections, or trailer/RV appliances); twenty (20) feet from LP-gas storage; and fifty (50) feet from other designated liquid fuel storage areas.
  - (d) Fuel storage containers, regardless of size or type, shall not exceed 80 percent capacity per container.
  - (e) Storage areas for all liquid fuel, regardless of amount, and not exceeding 110 gallons, must include a secondary containment system that can hold a liquid volume equal to or greater than 110 percent of the largest container being stored. Secondary containment measures must comply with the following:
    - (i) The secondary containment system must be free of cracks or gaps and constructed of materials impermeable to the fuel(s) being stored.
    - (ii) The secondary containment system must be designed to allow the removal of any liquids captured from leaks, spills, or precipitation.
- (8) **Water Discharge:** The unauthorized dumping or discharge of fresh water onto the playa surface, onto city streets or other public areas, or onto camp electric systems in a manner that creates a hazard or nuisance is prohibited. This provision does not prohibit the use of water trucks contracted by the event organizer to provide dust abatement measures.

## **B. Commercial Activities**

In accordance with 43 CFR 2932: Vending and the Special Recreation Permit Additional Stipulations for the permitted event, all vendors and air carrier services must provide proof of authorization to operate at the event issued by the permitting agency and/or the permit holder upon request. Failure to provide such authorization could result in eviction from the event.

## **C. Aircraft Landing**

(1) The public closure area is closed to aircraft landing, takeoff, and taxiing. Aircraft is defined in Title 18, U.S.C., section 31 (a)(1), and includes lighter-than-aircraft and ultra-light craft. The following exceptions apply:

- (a) All aircraft operations, including ultra-light and helicopter landings and takeoffs, will occur at the designated 88NV Black Rock City Airport landing strips and areas defined by airport management. All takeoffs and landings will occur only during the hours of operation (06:00 through 18:30) of the airport as described in the Burning Man Operating Plan. All pilots using the Black Rock City Airport must agree to and abide by the published airport rules and regulations;
- (b) Only fixed wing aircraft and helicopters providing emergency medical services may land at the designated Emergency Medical Services areas/pads or at other locations when required for medical incidents. The BLM authorized officer, or an authorized State/Local Law Enforcement Officer or his/her delegated representative may approve other helicopter landings and takeoffs when deemed necessary for the benefit of the law enforcement operation; and
- (c) Landings or takeoffs of lighter-than-air craft previously approved by the BLM authorized officer.
- (d) Landings or takeoffs outside of normal airport operational hours are permitted only with advanced notification to the BLM authorized officer.

#### **D. Alcohol/Prohibited Substance**

- (1) Possession of an open container of an alcoholic beverage by the driver or operator of any motorized vehicle, whether or not the vehicle is in motion, is prohibited.
- (2) Possession of alcohol by minors:
  - (a) The following are prohibited:
    - (i) Consumption or possession of any alcoholic beverage by a person under 21 years of age on public lands; and
    - (ii) Selling, offering to sell, or otherwise furnishing or supplying any alcoholic beverage to a person under 21 years of age on public lands.
- (3) Definitions:
  - (a) Open container: Any bottle, can, or other container that contains an alcoholic beverage, if that container does not have a closed top or lid for which the seal has not been broken. If the container has been opened one or more times, and the lid or top has been replaced, that container is an open container.
  - (b) Possession of an open container includes any open container that is physically possessed by the driver or operator or is adjacent to and reachable by that driver or operator. This includes, but is not limited to, containers in a cup holder or rack adjacent to the driver or operator, containers on a vehicle floor next to the driver or operator, and containers on a seat or console area next to a driver or operator.

#### **E. Drug Paraphernalia**

- (1) The possession of drug paraphernalia is prohibited.
- (2) Definition: Drug paraphernalia means all equipment, products, and materials of any kind that are used, intended for use, or designed for use in planting, propagating, cultivating,

growing, harvesting, manufacturing, compounding, converting, producing, preparing, testing, analyzing, packaging, repackaging, storing, containing, concealing, injecting, ingesting, inhaling, or otherwise introducing into the human body a controlled substance in violation of any State or Federal law, or regulation issued pursuant to law.

## **F. Disorderly Conduct**

- (1) Disorderly conduct is prohibited.
- (2) Definition: Disorderly conduct means that an individual, with the intent of recklessly causing public alarm, nuisance, jeopardy, or violence, or recklessly creating a risk thereof:
  - (a) Engages in fighting or violent behavior;
  - (b) Uses language, an utterance or gesture, or engages in a display or act that is physically threatening or menacing or done in a manner that is likely to inflict injury or incite an immediate breach of the peace; or
  - (c) Obstructs, resists, or attempts to elude a law enforcement officer, or fails to follow their orders or directions.

## **G. Eviction of Persons**

- (1) The public closure area is closed to any person who:
  - (a) Has been trespassed from the event by the permit holder;
  - (b) Has been evicted from the event by the BLM;
  - (c) Has been ordered by a law enforcement officer to leave the area of the permitted event.
- (2) Any person evicted from the event forfeits all privileges to be present within the perimeter fence or anywhere else within the public closure area even if they possess a ticket to attend the event. H.

## **H. Motor Vehicles**

- (1) Must comply with the following requirements:
  - (a) The operator of a motor vehicle must possess a valid driver's license.
  - (b) Motor vehicles and trailers must possess evidence of valid registration, except for mutant vehicles, or other vehicles registered with the permitted event organizers and operated within the scope of that registration.
  - (c) Motor vehicles must possess evidence of valid insurance, except for mutant vehicles or other vehicles registered with the permitted event organizers and operated within the scope of that registration.
  - (d) Motor vehicles and trailers must not block a street used for vehicular travel or a pedestrian pathway.
  - (e) Motor vehicles must not exceed the posted or designated speed limits. Posted or designated speed limits also apply to motorized skateboards, hover boards, electric assist bicycles, and Go-Peds with handlebars.

- (f) No person shall occupy a trailer while the motor vehicle is in transit upon a roadway, except for mutant vehicles, or other vehicles registered with the permitted event organizers and operated within the scope of that registration.
  - (g) During night hours, from a half-hour after sunset to a half-hour before sunrise, motor vehicles, other than a motorcycle or golf cart, must be equipped with at least two working headlamps and at least two functioning tail lamps, except for mutant vehicles or other vehicles registered with the permitted event organizers and operated within the scope of that registration, so long as they are adequately lit according to Burning Man Project's Department of Mutant Vehicle requirements.
  - (h) Motor vehicles, including motorcycles or golf carts, must display a red, amber, or yellow brake light visible to the rear in normal sunlight upon application of the brake, except for mutant vehicles, or other vehicles registered with the permitted event organizers and operated within the scope of that registration, so long as they are adequately lit according to Burning Man Project's Department of Mutant Vehicle requirements.
  - (i) Motorcycles or golf carts require only one working headlamp and one working taillight during night hours, from a half-hour after sunset to a half-hour before sunrise, unless registered with the permitted event organizers and operated within the scope of that registration, so long as they are adequately lit according to Burning Man Project's Department of Mutant Vehicle requirements.
  - (j) Trailers pulled by motor vehicles must be equipped with at least two functioning tail lamps and at least two functioning brake lights.
- (2) The public closure area is closed to motor vehicle use, except as provided below. Motor vehicles may be operated within the public closure area under the circumstances listed below:
- (a) Participant arrival and departure on designated routes;
  - (b) BLM, medical, law enforcement, and firefighting vehicles are authorized at all times;
  - (c) Vehicles, mutant vehicles, or art cars operated by the permit holder's staff or contractors and service providers on behalf of the permit holder are authorized at all times. These vehicles must display evidence of event registration in such manner that it is visible to the rear of the vehicle while the vehicle is in motion;
  - (c) Vehicles, mutant vehicles, or art cars operated by the permit holder's staff or contractors and service providers on behalf of the permit holder are authorized at all times. These vehicles must display evidence of event registration in such manner that it is clearly visible while the vehicle is in motion.
  - (d) Vehicles used by disabled drivers and displaying official State disabled driver license plates or placards;
  - (e) Participant drop-off of approved burnable material and wood to the Burn Garden/Wood Reclamation Stations (located on open playa at 3:00, 6:00, 9:00 Promenades and the Man base) from 10:00 a.m. Sunday through the end of day Tuesday, post event;
  - (f) Passage through, without stopping, the public closure area on the west or east playa roads or from the east side of the playa to the west and vice versa to traverse the entirety of the playa surface.

- (g) Support vehicles for art vehicles, mutant vehicles, and theme camps will be allowed to drive to and from fueling stations.

(3) Definitions:

- (a) A motor vehicle is any device designed for and capable of travel over land and which is self-propelled by a motor but does not include any vehicle operated on rails or any motorized wheelchair.
- (b) Motorized wheelchair means a self-propelled wheeled device, designed solely for and used by a mobility-impaired person for locomotion.
- (c) “Trailer” means every vehicle without motive power designed to carry property or passengers wholly on its own structure and to be drawn by a motor vehicle, this includes camp trailers, pop-up trailers, 4’x7” or larger flatbed trailers, enclosed cargo trailers, or RV style trailers.
- (d) A mutant vehicle (art car) must be licensed by Burning Man Project and is built from scratch or has been modified, customized, or changed (i.e., ‘mutated’) from its original form. A mutant vehicle is, in essence, a unique, motorized creation that either shows little or no resemblance to its original form, or any standard street vehicle.

## ***I. Public Closure***

The public closure area is closed to public camping with the following exception:

- (1) The permitted event’s ticket holders who are camped in designated event areas provided by the permit holder;
- (2) Ticket holders who are camped in the authorized pilot camp;
- (3) The permit holder’s authorized staff, contractors, and BLM authorized event management camps
- (4) Individuals or groups who have been permitted by the BLM.

## ***J. Public Use***

The public closure area is closed to entry and use by members of the public unless that person:

- (1) Is traveling through, without stopping, the public closure area on the west or east playa roads;
- (2) possesses a valid ticket to attend the event;
- (3) Is an employee or authorized volunteer with the BLM, a law enforcement officer, emergency medical service provider, fire protection provider, or another public agency employee working at the event and that individual is assigned to the event;
- (4) Is a person working at or attending the event on behalf of the permit holder, or is authorized by the permit holder to be onsite prior to the commencement of the event for

the primary purpose of constructing, creating, designing, or installing art, displays, buildings, facilities, or other items and structures in connection with the event;

- (5) Is an employee of a commercial operation contracted to provide services to the event organizers and/or participants authorized by the permit holder through a contract or agreement and authorized by BLM through a Special Recreation Permit.

### ***K. Lasers***

- (1) The possession and or use of handheld lasers is prohibited.
- (2) Definition: A laser means any hand-held laser beam device or demonstration laser product that emits a single point of light amplified by the stimulated emission of radiation that is visible to the human eye.

### ***L. Weapons***

- (1) For public health and safety reasons, the possession or discharge of any weapon is prohibited starting two (2) days prior to the event, the nine (9) days of the event, and for two (2) days after the event, with three exceptions:
  - (a) Unloaded weapons may be carried within motor vehicles that are passing through, without stopping, the Phase 2 closure area on designated playa routes;
  - (b) County, State, Tribal, and Federal law enforcement personnel who are working in their official capacity at the event are not prohibited from possessing or discharging weapons; and
  - (c) Art that includes weapons will be allowed only after receipt of authorization from both the special recreation permit holder and the BLM authorized officer.
- (2) Definitions:
  - (a) Weapon means a firearm, compressed gas or spring powered pistol or rifle, bow and arrow, cross bow, blowgun, spear gun, hand-thrown spear, sling shot, irritant gas device, electric stunning or immobilization device, explosive device, any implement designed to expel a projectile, switch-blade knife, any blade which is greater than 10 inches in length from the tip of the blade to the edge of the hilt or finger guard nearest the blade (e.g., swords, dirks, daggers, machetes), or any other weapon the possession of which is prohibited by State law. Exception: This rule does not apply in a kitchen or cooking environment or where an event worker is wearing or utilizing a construction knife for their duties at the event.
  - (b) Firearm means any pistol, revolver, rifle, shotgun, or other device, which is designed to, or may be readily converted to, expel a projectile by the ignition of a propellant.
  - (c) Discharge means the expelling of a projectile from a weapon or the ignition of a propellant.

### ***M. Enforcement***

Any person who violates this temporary closure or any of these temporary restrictions may be tried before a United States Magistrate and fined in accordance with 18 U.S.C. 3571, imprisoned no more than 12 months under 43 U.S.C. 1733(a) and 43 CFR 8360.0-7, or both. In accordance



with 43 CFR 8365.1–7, State or local officials may also impose penalties for violations of Nevada law. (Authority: 43 CFR 8364.1.)

**RATIONALE:** Authority for closure of public lands is found in 43 CFR 8340 subpart 8341, 43 CFR 8360 subpart 8364.1, and 43 CFR 2932.

**EXEMPTIONS:** The above restrictions do not apply to emergency vehicles and vehicles owned by the United States, the State of Nevada, or Pershing County. Vehicles under permit for operation by event participants must follow the event permit stipulations.

*This order does not apply to Federal, State, and local officers and employees in the performance of their official duties; members of organized rescue or firefighting forces in the performance of their official duties; and persons with written authorization from the BLM.*

*This order does not apply to activities conducted under contract with the BLM, agency personnel monitoring the event, or activities conducted under an approved plan of operations. Authorized users must have in their possession a written permit or contract from the BLM, signed by the authorized officer.*

**LOCATION:** The legal description of the affected public lands in the temporary public closure area of both stages is Mount Diablo Meridian, Nevada:

Phase 1, being the smaller area of 9,941 acres, will be effective for 25 days prior to build week. Phase 1 resumes for 29 days following the end of Phase 2.

**Phase 1:**

Mount Diablo Meridian, Nevada

T. 33 N., R. 24 E., unsurveyed,

sec. 1, those portions of the N1/2 lying northwesterly of playa access road;

sec. 2, N1/2 and SW1/4;

sec. 3;

secs. 4 and 5, those portions lying southeasterly of Washoe County Road 34;

sec. 9, N1/2.

T. 33 1/2 N., R. 24 E., unsurveyed,

secs. 25 and 26;

secs. 27, 33, and 34, those portions lying southeasterly of West Playa Highway;

secs. 35 and 36.

T. 34 N., R. 24 E., partly unsurveyed,

sec. 25;

secs. 26 and 27, those portions lying southeasterly of West Playa Highway;

sec. 34, those portions of the E1/2 lying southeasterly of West Playa Highway;

secs. 35 and 36.

T. 34 N., R. 25 E., unsurveyed,

sec. 16, SW1/4SW1/4;

sec. 21;  
sec. 27, W1/2NW1/4 and W1/2SW1/4;  
sec. 28;  
sec. 33, N1/2 and SW1/4;  
sec. 34, W1/2NW1/4.

The area described contains 9,941 acres, more or less, according to the BLM National Public Land Survey System Cadastral National Spatial Data Infrastructure (PLSS CadNSDI) dataset, the protraction diagrams, and the official plats of the surveys of the said lands, on file with the BLM.

**Phase 2**, being the larger area of 51,149 acres, includes all of Phase 1, will be effective for 20 days which covers six (6) days prior to the Event and last until five (5) days after the Event.

Phase 2:

Mount Diablo Meridian, Nevada

T. 33 N., R. 23 E.,

sec. 25, NE1/4NE1/4, S1/2NE1/4, SE1/4NW1/4, NE1/4SW1/4, S1/2SW1/4, and SE1/4;  
sec. 26, S1/2SE1/4;  
sec. 35, NE1/4, SE1/4NW1/4, N1/2NE1/4SW1/4, N1/2NW1/4SW1/4, N1/2NE1/4SE1/4, and N1/2NW1/4SE1/4;  
sec. 36, N1/2, N1/2NE1/4SW1/4, N1/2NW1/4SW1/4, N1/2NE1/4SE1/4, and N1/2NE1/4SE1/4.

T. 33 N., R. 24 E., unsurveyed,

secs. 1 thru 3;  
sec. 4, those portions lying southeasterly of Washoe County Road 34;  
sec. 5;  
sec. 8, NE1/4, S1/2SW1/4, and SE1/4;  
secs. 9 thru 12 and secs. 14 thru 17;  
sec. 18, SE1/4NE1/4, S1/2SW1/4, and SE1/4;  
secs. 19 and 20;  
sec. 21, excepting M.S. No. 4800;  
sec. 29, N1/2;  
sec. 30, N1/2.

T. 33 1/2 N., R. 24 E., unsurveyed,

secs. 25 thru 27;  
secs. 28, 29, and 33, those portions lying easterly and northeasterly of Washoe County Road 34;  
secs. 34 thru 36.

T. 34 N., R. 24 E., partly unsurveyed,

secs. 1 and 2, secs. 11 thru 14, and secs. 23 thru 26;  
sec. 27, E1/2NE1/4, E1/2SW1/4, and SE1/4;  
sec. 32, those portions of the SE1/4 lying northeasterly of Washoe County Road 34;

sec. 33, NE1/4NE1/4, S1/2NE1/4, those portions of the SW1/4 lying northeasterly of Washoe County Road 34, and SE1/4;  
secs. 34 thru 36.

T. 33 N., R. 25 E.,

secs. 2 thru 4, those portions lying northwesterly of the Black Rock Desert, High Rock Canyon National Conservation Area boundary.

T. 34 N., R. 25 E., unsurveyed,

secs. 1 thru 4, secs. 9 thru 16, secs. 21 thru 28, and secs. 33 and 34;

secs. 35 and 36, those portions lying northwesterly of the Black Rock Desert, High Rock Canyon National Conservation Area boundary.

T. 35 N., R. 25 E., unsurveyed,

secs. 25 thru 28 and secs. 33 thru 36.

T. 34 N., R. 26 E., unsurveyed,

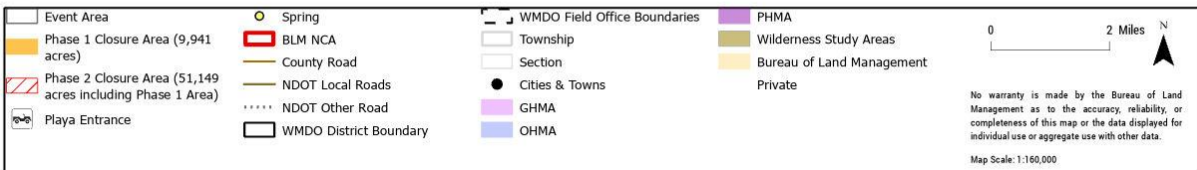
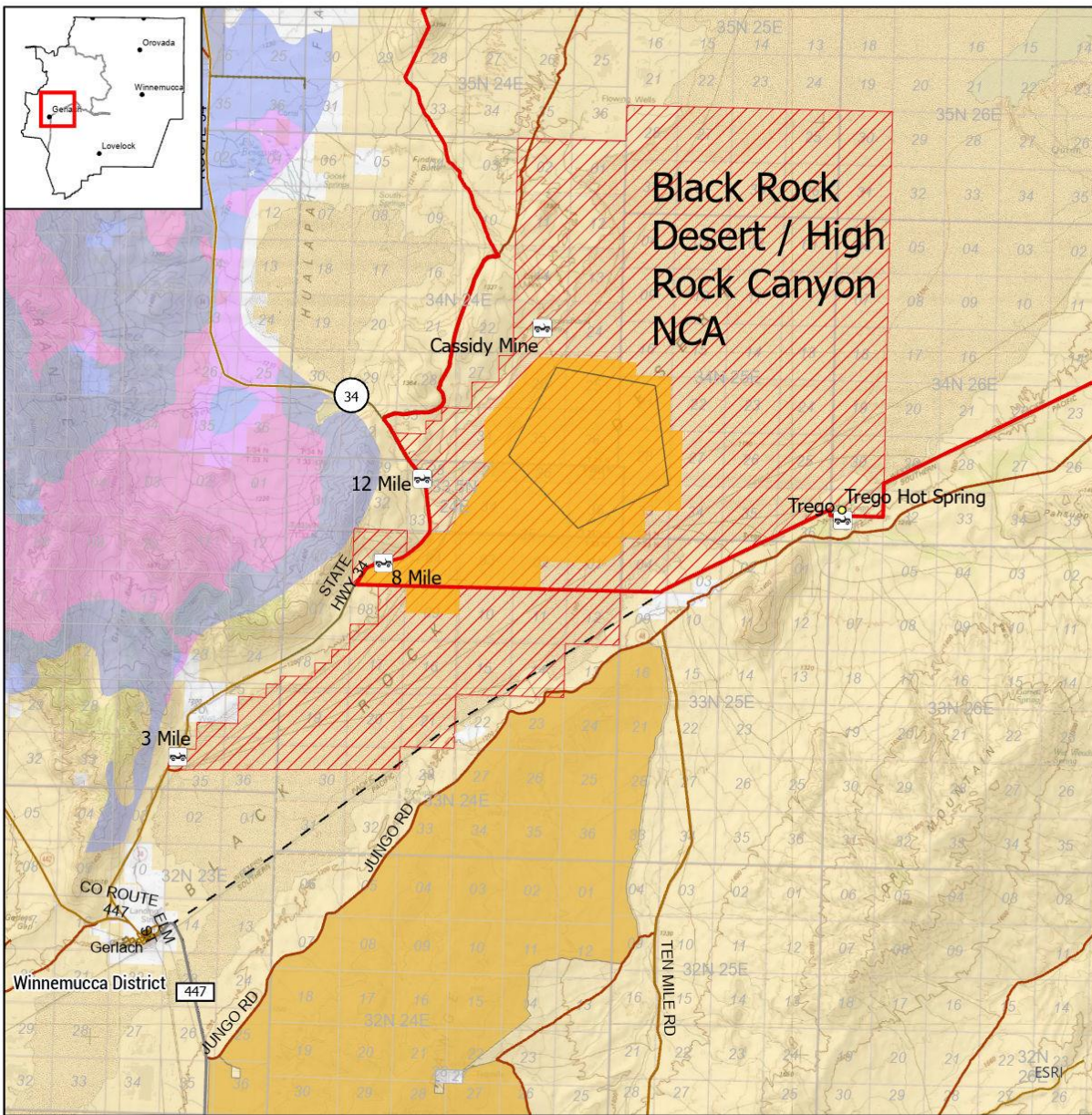
secs. 6, 7, 18, 19, and 30;

sec. 31, those portions lying north of the Black Rock Desert, High Rock Canyon National Conservation Area boundary.

T. 35 N., R. 26 E., unsurveyed,

secs. 30 and 31.

The area described contains 51,149 acres, more or less, according to the BLM National PLSS CadNSDI, the protraction diagrams, and the official plats of the surveys of the said lands, on file with the BLM.



**DATES:** July 24, 2025 – October 5, 2025

**NOTIFICATION METHODS AND POSTED LOCATIONS**

<https://www.blm.gov/announcement/blm-announces-temporary-closures-black-rock-desert-playa>: The BLM will post the dates for each Burning Man Event, copies of the temporary closure and restrictions, and an associated map in kiosks at access points to the Black Rock Desert playa as well as at the Gerlach Post Office, Bruno's Restaurant, Empire Store, Burning Man Project Offices, Friends of Black Rock-High Rock Office, the BLM-Nevada Black Rock Station near Gerlach, the BLM-California Applegate Field Office, and on the BLM website at the address provided below every year at least 30 days prior to the events.

**ADDRESS**

Winnemucca District, 5100 E Winnemucca Blvd., Winnemucca, NV 89445-2921; BLM website: [www.blm.gov/nevada](http://www.blm.gov/nevada).

Posted on the Black Rock Field Office website at: <https://www.blm.gov/office/black-rock-field-office>

**ENFORCEMENT AND PENALTIES** (Generic language, if appropriate): *Any person who violates the temporary closures or restrictions in this order may be tried before a United States magistrate and fined in accordance with [18 U.S.C. 3571](#), imprisoned no more than 12 months under [43 U.S.C. 1733\(a\)](#) and [43 CFR 8360.0-7](#), or both. In accordance with [43 CFR 8365.1-7](#), State or local officials may also impose penalties for violations of State law.*

**FOR FURTHER INFORMATION CONTACT:** Jonah Blustain, Black Rock Field Office Manager, 775-623-1500, [jblustain@blm.gov](mailto:jblustain@blm.gov)

**APPROVED BY:** Samuel Burton, Winnemucca District Office, District June 24, 2025.