



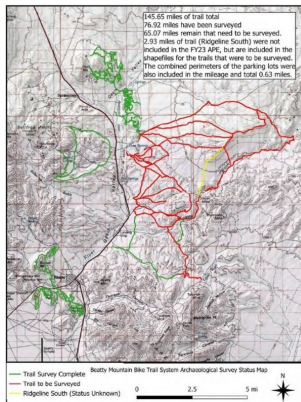
# NEVADA

## Battle Mountain District

### Recreation Fee Program Spending & Accomplishment Highlights 2024

District Office

#### Beatty Bike Trails Project



Beatty Bike Trail Map Survey Status.

**Amount Expended: \$77,286.62**

The Battle Mountain District (BMDO) has been partnering with the Great Basin Institute (GBI) and Private Citizens of Beatty NV to complete the Beatty Bike Trails Project. Together, we are expanding the bike trails around the town of Beatty. This will have positive impacts on visitation, experience, safety for visitors, plants, wildlife, general recreation, and tourism in the area. GBI has hired archeologists through an agreement with GBI to complete the last 65.07 miles of trail surveys.

#### Crescent Sand Dunes Improvements



Crescent Sand Dunes New Table and Fire Rings.

**Amount Expended: \$1000.00**

Working with volunteers, the Tonopah Field Office (TFO) went to the Crescent Sand Dunes Special Recreation Management Area (SRMA) and collected over 250 pounds of trash from the area, added a third picnic table, and installed three new fire rings by each picnic table. We were able to meet with members of the public that were at the SRMA to recreate and/or volunteer and connect with them about what makes the area important, what is working well, and what could use improvement. This will have positive impacts on visitor experiences at the SRMA.

### Revenue & Expenditures

FY24 Revenue	
Recreation Use Permits (RUPs)	\$0.00
Special Recreation Permits (SRPs)	\$20,654.06
Individual Special Recreation Permits	\$0.00
Interagency Passes	\$720.00
<b>Total Recreation Fee Revenue for FY24</b>	<b>\$20,574.06</b>
<b>Carryover from Prior Years</b>	<b>\$80,289.46</b>
<b>Total Available Funds for FY24</b>	<b>\$101,763.88</b>

FY24 Expenditures	
Repair & Maintenance	\$39.95
Visitor Services	\$0.00
Law Enforcement	\$0.00
Inventory, Monitoring and Planning	\$81,066.59
Collections/Overhead	\$1,184.41
<b>Total Recreation Fee Expenditures for FY24</b>	<b>\$82,290.95</b>
<b>Total Carryover Funds for FY25</b>	<b>\$19,472.93</b>



## Other Accomplishments

- Monitored, maintained, and improved recreation areas throughout the BMDO working with volunteers, interns, other organizations, and field office staff.
- Successfully processed and monitored all SRP applications for the BMDO.
- Began inventory work for improvements to the Hickison Campground and cultural site.

## Vicinity Map



## Planned Activities



*Sign In Need of Replacement in the BMDO.*

Restoration and Reinforcement of the Historic Town of Rhyolite. \$5,000.00.

Working with Scenic America to complete a survey over Lunar Crater Back Country Byway (BCB) to review existing and gather additional information about the BCB to create a more detailed map and web page.

Restoration or replacement of established signs already out in the field that are in dire need of attention, this will help improve visitor satisfaction and safety. \$5,000.00.

Working with the Nevada Off-Road Association in the Mount Lewis Field Office to start an expansion project at the Shoshone OHV Trail System.

## FY25 Planned Expenditures

Repair & Maintenance	\$5,500.00
Visitor Services	\$1,500.00
Law Enforcement	\$600.00
Inventory, Monitoring and Planning	\$1,500.00
Collections/Overhead	\$1,100.00
<b>Total Planned Expenditures for FY25</b>	<b>\$10,200.00</b>
<b>Total Projected funds for FY25</b>	<b>\$19,472.93</b>
<b>Planned Recreation Fee Revenue for FY25</b>	<b>\$21,000.00</b>
<b>FY25 Balance after Planned Expenditures</b>	<b>\$30,272.93</b>

### Battle Mountain District Recreation Fee Program Contact

Phone Number: (775) 635-4000

Email: BLM\_NV\_BMDOwebmail@blm.gov

Web: <https://www.blm.gov/office/battle-mountain-district-office>

[Published FLREA Triennial Report](https://doi.sciencebase.gov/flrea/)

<https://doi.sciencebase.gov/flrea/>

[Published FLREA Annual Revenue and Spending Plans](https://www.blm.gov/programs/recreation/permits-and-fees/flrea-revenue)

<https://www.blm.gov/programs/recreation/permits-and-fees/flrea-revenue>

[Bureau of Land Management's Blueprint for 21st Century Outdoor Recreation](https://www.blm.gov/sites/default/files/docs/2023-08/Blueprint%20for%2021st%20Century%20Outdoor%20Recreation508.pdf)

<https://www.blm.gov/sites/default/files/docs/2023-08/Blueprint%20for%2021st%20Century%20Outdoor%20Recreation508.pdf>

*Recreation fee dollars are an investment in outdoor recreation. Current and future generations benefit as 100% of the funds collected are reinvested in the facilities and services that visitors enjoy, use, and value.*

