

# Engage Archaeology in Lincoln County Online



## Go on a Journey!

Join Rosa the Roadrunner on a tour of an archaeology site in Lincoln County, Nevada and discover painted rock writings, Native American artifacts like arrowheads, and new things about the environment.



<https://kuula.co/share/collection/7FYLK?logo=0&info=0&fs=1&vr=1&sd=1&initload=0&thumbs=1>

## Visit Sites Virtually!

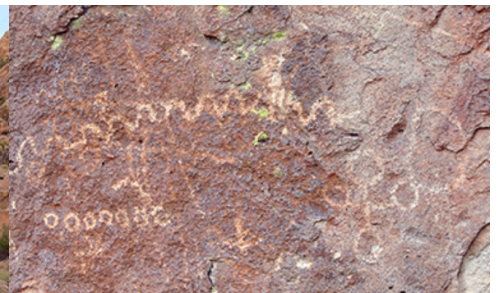
Take your time to explore these amazing sites by clicking on a map and points to get 360 degree views.



Crescent City



Red Pigment Canyon



Petroglyph Rocks

**Crescent City** is an old mining site with a remaining smokestack and cabin.

<https://lcai10.legiongis.com/report/23fd43a5-acdc-41bd-0001-7b7728417493>



**Red Pigment Canyon** is an area with hundreds of pecked and painted images on the rocks.

<https://lcai10.legiongis.com/report/23fd43a5-acdc-41bd-0002-7b7728417493>



**Petroglyph Rocks** (Paiute Rocks) is named after petroglyphs which are images pecked in the rocks.

<https://lcai10.legiongis.com/report/23fd43a5-acdc-41bd-0000-7b7728417493>

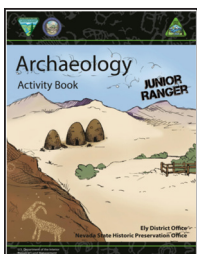


**Northern Site** is within White River Narrows with layers of petroglyphs.

[coming soon!](#)

## Become a Junior Ranger!

Book available online or in print at the BLM office in Caliente.



<https://www.blm.gov/documents/nevada-ely-do/public-room/educational-material/archaeology-junior-ranger-book>



## Read a comic book!

Find out what they do with the arrowhead they found.



[https://shpo.nv.gov/uploads/documents/Coloring\\_Book.pdf](https://shpo.nv.gov/uploads/documents/Coloring_Book.pdf)



Handout created by Nevadans for Cultural Preservation (nvfc.org) through a Lincoln County Archaeological Initiative Grant with funds obtained through the sale of public lands administered by the Bureau of Land Management in Lincoln County, Nevada and approved under an interagency partnership authorized by the Lincoln County Land Act.

# Learn Lincoln County Archaeology Online



## Watch a Show!

**A Point in Time** presents how archaeological research is conducted. The film shows archaeologists working in Lincoln County, Nevada and some of the collaboration involved in research projects.

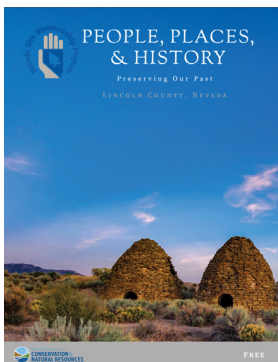


<https://youtu.be/O9o8oPNF-8o>

From the film makers:

“Our Lincoln County story is not one of awe-inspiring burial tombs, hidden treasures, or lost cities, but of real and compelling archaeology. It is the story of the careful attention that is paid to small, seemingly insignificant rock fragments and minute bits of the prehistoric past. Day by day, and year by year, information is collected, analyzed, and evaluated, until slowly the big picture comes into focus. To create a compelling documentary we have developed a locally based storyline that has regional significance.”

## Browse a Book/Magazine!



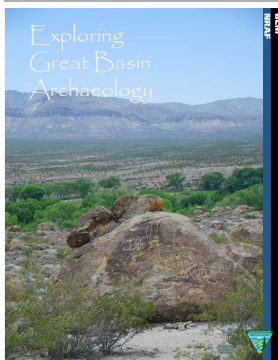
### People, Places, and History of Lincoln County

<https://indd.adobe.com/view/17e7f065-8759-403f-96b3-8d35be856975>



This magazine contains stories common to the county's past and connects them to national and international events. The articles provide glimpses into past lives and real local people become connected to places and the objects they left behind.

This also includes the history of the area's State Parks.

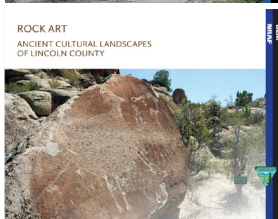


### Exploring Great Basin Archaeology

[https://nvrockart.art/aan\\_pages/txt/Exploring\\_Great\\_Basin\\_Archaeology.pdf](https://nvrockart.art/aan_pages/txt/Exploring_Great_Basin_Archaeology.pdf)



This booklet is an overview of the history of Native American cultures in the Great Basin which includes Lincoln County. The story of how Great Basin people made a living is told from cultural anthropological and archaeological perspectives.



### Rock Art: Ancient Cultural Landscapes of Lincoln County

[https://nvrockart.art/aan\\_pages/txt/LN\\_cultural\\_landscapes\\_large.pdf](https://nvrockart.art/aan_pages/txt/LN_cultural_landscapes_large.pdf)



This book covers the history of rock art and dives into the known rock art sites and styles in Lincoln County.

Handout created by Nevadans for Cultural Preservation (nvfc.org) through a Lincoln County Archaeological Initiative Grant with funds obtained through the sale of public lands administered by the Bureau of Land Management in Lincoln County, Nevada and approved under an interagency partnership authorized by the Lincoln County Land Act.



# Get Prepared for an Archaeological Trip

## Review Brochures & Maps!

### Lincoln County Rock Writing Sites

#### Rock Art vs Rock Writing

Today we refer to petroglyphs (images pecked in rocks) and pictographs (images painted on rocks) as rock writing to honor the fact that these images are a unique form of communication.

There are brochures for five rock writing areas on public lands. They have driving directions and information about the sites. Note: Some sites require 4-wheel drive or high clearance vehicles to access parking areas. Others require walking on uneven terrain and trails are not marked. Please choose what is best for you.

#### Ash Springs



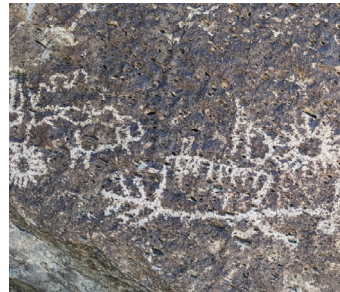
[https://nvrockart.art/aan\\_pages/txt/Ash%20Springs\\_brochure.pdf](https://nvrockart.art/aan_pages/txt/Ash%20Springs_brochure.pdf)



#### Crystal Wash



[https://nvrockart.art/aan\\_pages/txt/Crystal%20Wash\\_brochure.pdf](https://nvrockart.art/aan_pages/txt/Crystal%20Wash_brochure.pdf)



#### Shooting Gallery



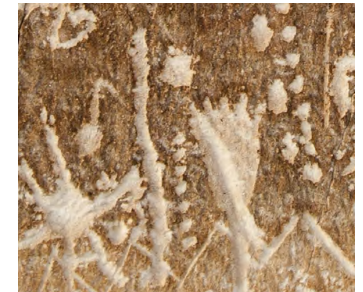
[https://nvrockart.art/aan\\_pages/txt/Shooting%20Gallery\\_brochure.pdf](https://nvrockart.art/aan_pages/txt/Shooting%20Gallery_brochure.pdf)



#### White River Narrows



[https://nvrockart.art/aan\\_pages/txt/WRN%20Brochure.pdf](https://nvrockart.art/aan_pages/txt/WRN%20Brochure.pdf)

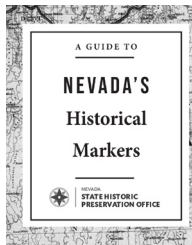


#### Mt. Irish

Rock Writing Brochure : [https://nvrockart.art/aan\\_pages/txt/MI%20Brochure.pdf](https://nvrockart.art/aan_pages/txt/MI%20Brochure.pdf)



Trail and Campground Brochure:  
[coming soon!](#)



#### Find Historical Markers!

[https://shpo.nv.gov/uploads/documents/Historic\\_Marker\\_Booklet\\_Online\\_Version\\_with\\_Links.pdf](https://shpo.nv.gov/uploads/documents/Historic_Marker_Booklet_Online_Version_with_Links.pdf)

This guide provides their locations and subjects.



## Check out the BLM's Places to Visit!

This site has a coordinate for the site and driving directions. Roads may require 4-wheel drive.



#### Panaca Charcoal Kilns

<https://www.blm.gov/visit/panaca-charcoal-kilns>



These beehive kilns, east of Panaca, provided charcoal for area mining operations.

Be careful visiting!

## Download a Georeferenced Map!

Georeferenced maps can be printed or they can be uploaded into navigation apps like Avenza.

#### Mt Irish Trail Map

[coming soon!](#)

#### Basin and Range National Monument Map

<https://www.blm.gov/sites/default/files/docs/2024-05/BARNM%20visitor%20map%2004182024%20508-compliant.pdf>



The monument map contains a point for Logan City - an old mining camp at Mt. Irish.

# Other Archaeological Resources

---

## Watch a Preservation Video or Recorded Talk!

These educational YouTube videos cover preservation issues and archaeological sites in Lincoln County.

### Graffiti Removal Video

[https://youtu.be/W4T9erTPt\\_M](https://youtu.be/W4T9erTPt_M)

This short video shows what happens when someone spray paints on top of pictographs (rock writings).



### Explore, Report, and Protect Cultural Resources

<https://youtu.be/A1zIUrnjciI>

Learn from southern Nevada archaeologists and locals why it is important to enjoy cultural sites with respect. Also learn how you can be involved as a volunteer Site Steward.



### Nevada History Videos: Old Lincoln County Courthouse

[https://youtu.be/P9UJ2n0naeU?si=NLqXzTS\\_Vy2PBqyO](https://youtu.be/P9UJ2n0naeU?si=NLqXzTS_Vy2PBqyO)

In two minutes learn the history of the Million Dollar Courthouse in Pioche.



### A Brief History of Lincoln County, Nevada

<https://youtu.be/TowJqu9lyfk?si=aWq6zyS56OX4dVgg>

Presented by Harry Konwin, Former Archaeologist for the Bureau of Land Management Caliente Field Office



### Surviving Railroad Depots of Nevada

<https://youtu.be/IrWrwsIDgcs?si=BTw4WdHp5kOHtSI6>

Presented by Jean-Guy Tanner Dubé, Nevada State Historic Preservation Office  
Discusses the Caliente Depot



### Places with Rock Imagery in the White River Narrows

<https://youtu.be/QpbVK5e8xZI?si=nFA5lQas6tomfn-v>

Presented by Jannie Loubser, PhD, RPA Archaeologist/Rock Art Specialist at Stratum Unlimited LLC  
Discusses the importance of recording and sequencing the different images.



### The Conservation and Management of Rock Art: An Integrated Approach

<https://youtu.be/N4b2EVcaZeM?si=5PqWHfaQssQqBvop>

Presented by Jannie Loubser, PhD, RPA Archaeologist/Rock Art Specialist at Stratum Unlimited LLC



Handout created by Nevadans for Cultural Preservation (nvfc.org) through a Lincoln County Archaeological Initiative Grant with funds obtained through the sale of public lands administered by the Bureau of Land Management in Lincoln County, Nevada and approved under an interagency partnership authorized by the Lincoln County Land Act.