



WYOMING Worland

Field Office

Recreation Fee Program Spending & Accomplishment Highlights 2024

Ten Sleep USFS Climbing Ranger

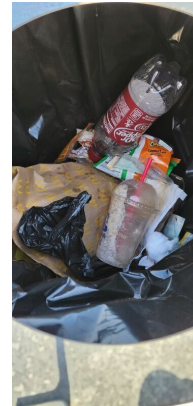


Popular climbing area known as the amphitheater

Amount Expended: \$5,400.00

During the 2024 fiscal year the Worland Field office used approximately \$5,400 to provide additional staff through an agreement with the USFS to monitor popular climbing areas located in the Ten Sleep Canyon and adjacent areas.

Worland Rec Cleaning Contract



Trash can at Duck Swamp Recreation Area

Amount Expended: \$12,000.00

During FY 2024 the Worland Field completed and awarded approximately 12,000.00 for a new site cleaning contract that expanded and included all primary recreations sites throughout the field office.

Revenue & Expenditures

FY24 Revenue	
Recreation Use Permits (RUPs)	\$0.00
Special Recreation Permits (SRPs)	\$17,344.00
Individual Special Recreation Permits	\$0.00
Interagency Passes	\$500.00
Total Recreation Fee Revenue for FY24	\$17,844.00
Carryover from Prior Years	\$35,000.00
Total Available Funds for FY24	\$52,844.00

FY24 Expenditures	
Repair & Maintenance	\$17,500.00
Visitor Services	\$0.00
Law Enforcement	\$0.00
Inventory, Monitoring and Planning	\$5,400.00
Collections/Overhead	\$0.00
Total Recreation Fee Expenditures for FY24	\$22,900.00
Total Carryover Funds for FY25	\$29,944.00



Other Accomplishments

- Weed spraying for recreation sites.

Vicinity Map



Planned Activities



Washiske Needles, Absaroka Front

Award option year 2 for cleaning services contract.
USFS climbing ranger monitoring.
Annual building & site maintenance.
Routine equipment purchases.
Recreational Labor.

FY25 Planned Expenditures

Repair & Maintenance	\$17,500.00
Visitor Services	\$0.00
Law Enforcement	\$0.00
Inventory, Monitoring and Planning	\$5,400.00
Collections/Overhead	\$0.00
Total Planned Expenditures for FY25	\$22,900.00
Total Projected funds for FY25	\$29,944.00
FY25 Balance after Planned Expenditures	\$7,044.00

Worland

Recreation Fee Program Contact

Phone Number: (307) 347-5100

Email: BLM_WY_Worland_WYMail@blm.gov

Web: <https://www.blm.gov/office/worland-field-office>

[Published FLREA Triennial Report](https://doi.sciencebase.gov/flrea/)

<https://doi.sciencebase.gov/flrea/>

[Published FLREA Annual Revenue and Spending Plans](https://www.blm.gov/programs/recreation/permits-and-fees/flrea-revenue)

<https://www.blm.gov/programs/recreation/permits-and-fees/flrea-revenue>

[Bureau of Land Management's Blueprint for 21st Century Outdoor Recreation](https://www.blm.gov/sites/default/files/docs/2023-08/Blueprint%20for%2021st%20Century%20Outdoor%20Recreation508.pdf)

<https://www.blm.gov/sites/default/files/docs/2023-08/Blueprint%20for%2021st%20Century%20Outdoor%20Recreation508.pdf>

Recreation fee dollars are an investment in outdoor recreation. Current and future generations benefit as 100% of the funds collected are reinvested in the facilities and services that visitors enjoy, use, and value.

