



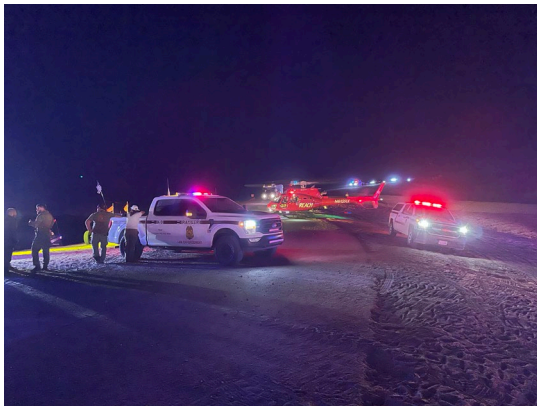
# CALIFORNIA

## El Centro

Field Office

### Recreation Fee Program Spending & Accomplishment Highlights 2024

#### Law Enforcement



Law Enforcement Securing Lz- Photo by M. Carpenter

**Amount Expended: \$1,275,574.33**

The El Centro Field Office (ECFO) Uses 1232 resources to utilize Law Enforcement Rangers, EMS, local law enforcement agencies for cultural resource protection, provide education and support services to the public, while ensuring crime prevention.

#### OHV Search & Rescue



EMS & Partners Flight- Photo by R. Rubio

**Amount Expended: \$433,121.07**

The BLM El Centro Field Office provides an off-highway vehicle (OHV) emergency medical and rescue services in the Imperial Sand Dunes Recreation Area. During the 2023-2024 use season, OHV Park Rangers responded to 278 calls, including 49 search and rescues. These particular park rangers are EMT certified and skilled to search for/and evacuate any lost and/or injured party. Those certified, use special OHV rescue capabilities such as vehicle extrication, and provide life flight support operations.

### Revenue & Expenditures

FY24 Revenue	
Recreation Use Permits (RUPs)	\$8,444.66
Special Recreation Permits (SRPs)	\$64,957.96
Individual Special Recreation Permits	\$3,054,132.50
Interagency Passes	\$2,060.00
<b>Total Recreation Fee Revenue for FY24</b>	<b>\$3,129,595.12</b>
<b>Carryover from Prior Years</b>	<b>\$1,391,671.61</b>
<b>Total Available Funds for FY24</b>	<b>\$4,521,266.73</b>

FY24 Expenditures	
Repair & Maintenance	\$627,023.10
Visitor Services	\$907,564.71
Law Enforcement	\$1,710,709.52
Inventory, Monitoring and Planning	\$14.50
Collections/Overhead	\$16,211.20
<b>Total Recreation Fee Expenditures for FY24</b>	<b>\$3,261,523.03</b>
<b>Total Carryover Funds for FY25</b>	<b>\$1,259,743.70</b>



## Other Accomplishments

- Conducted 39 Outreach Events which led to informing members of the public on different opportunities available to them.
- Law Enforcement Services: 16,777 contacts that include Warnings, Citations, DUIs, Registration and SRP Compliance for FY4.
- Road and Campground maintenance: Maintain access to 17 miles of roads & campgrounds by grading, watering and sand removal.

## Vicinity Map



## Planned Activities



Camp RZR Outreach Event- Photo by T. Rubio

\$1.2 Mil of Carryover funding towards the New Construction of Cahuilla Ranger Station.

Grays Well Rd Shoulder work Repair & maintenance.

Continuance of processing Special Recreation Permits, Letters of Agreement (LOA) and engaging in collaborative projects that lead to establishing mutual agreement such as a Memorandum of Understanding (MOU)

Installment of New Portal signs for access points into the Imperial Sand Dunes Recreation Area.

## FY25 Planned Expenditures

Repair & Maintenance	\$1,800,000.00
Visitor Services	\$200,000.00
Law Enforcement	\$1,300,000.00
Inventory, Monitoring and Planning	\$0.00
Collections/Overhead	\$760,000.00
<b>Total Planned Expenditures for FY25</b>	<b>\$4,060,000.00</b>
<b>Total Projected funds for FY25</b>	<b>\$1,259,743.70</b>
<b>FY25 Balance after Planned Expenditures</b>	<b>\$-2,800,256.30</b>

\*FY25 Projected Revenue \$3,200,000.00

## El Centro

## Recreation Fee Program Contact

Phone Number: 760-337-4400

Email: BLM\_CA\_Web\_EC@blm.gov

Web: <https://www.blm.gov/office/el-centro-field-office>

[Published FLREA Triennial Report](https://doi.sciencebase.gov/flrea/)

<https://doi.sciencebase.gov/flrea/>

[Published FLREA Annual Revenue and Spending Plans](https://www.blm.gov/programs/recreation/permits-and-fees/flrea-revenue)

<https://www.blm.gov/programs/recreation/permits-and-fees/flrea-revenue>

[Bureau of Land Management's Blueprint for 21st Century Outdoor Recreation](https://www.blm.gov/sites/default/files/docs/2023-08/Blueprint%20for%2021st%20Century%20Outdoor%20Recreation508.pdf)

<https://www.blm.gov/sites/default/files/docs/2023-08/Blueprint%20for%2021st%20Century%20Outdoor%20Recreation508.pdf>

*Recreation fee dollars are an investment in outdoor recreation. Current and future generations benefit as 100% of the funds collected are reinvested in the facilities and services that visitors enjoy, use, and value.*

