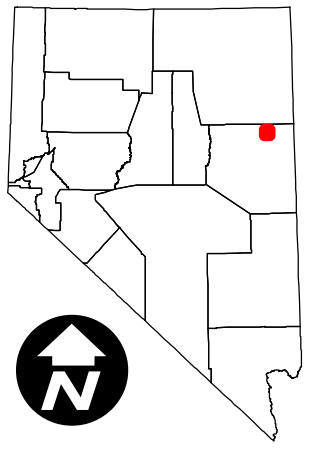
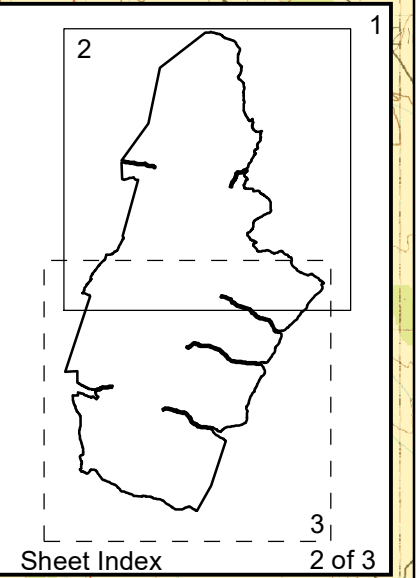
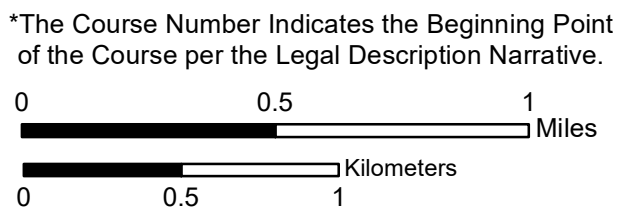


Becky Peak Wilderness

1
POB
39°56'53.804" N
114°39'44.364" W



North American Datum 1983
Universal Transverse Mercator Zone 11 North
The portions of the wilderness boundary common with the Public Land Survey System (PLSS) were adjusted to the Nevada BLM Cadastral National Spatial Data Infrastructure (CadNSDI).



- Boundary Change Point*
- Monument with Wilderness Brass Cap*
- - - Bureau of Land Management Wilderness Boundary
- Bureau of Land Management Wilderness
- Bureau of Land Management
- Private

U. S. Geological Survey, 7.5 minute quadrangle maps, (Nevada):
Cherry Spring Becky Peak
Goshute Lake South Lages Station

Becky Peak Wilderness

White Pine County, Nevada
Bureau of Land Management, Ely District Office

Boundary of Wilderness Area as included in the National Wilderness Preservation System by Public Law No. 109-432, dated December 20, 2006.

Map Completed May 4, 2022

No Warranty is made by the Bureau of Land Management as to the accuracy, reliability, or completeness of these data for individual use or aggregate use with other data.

