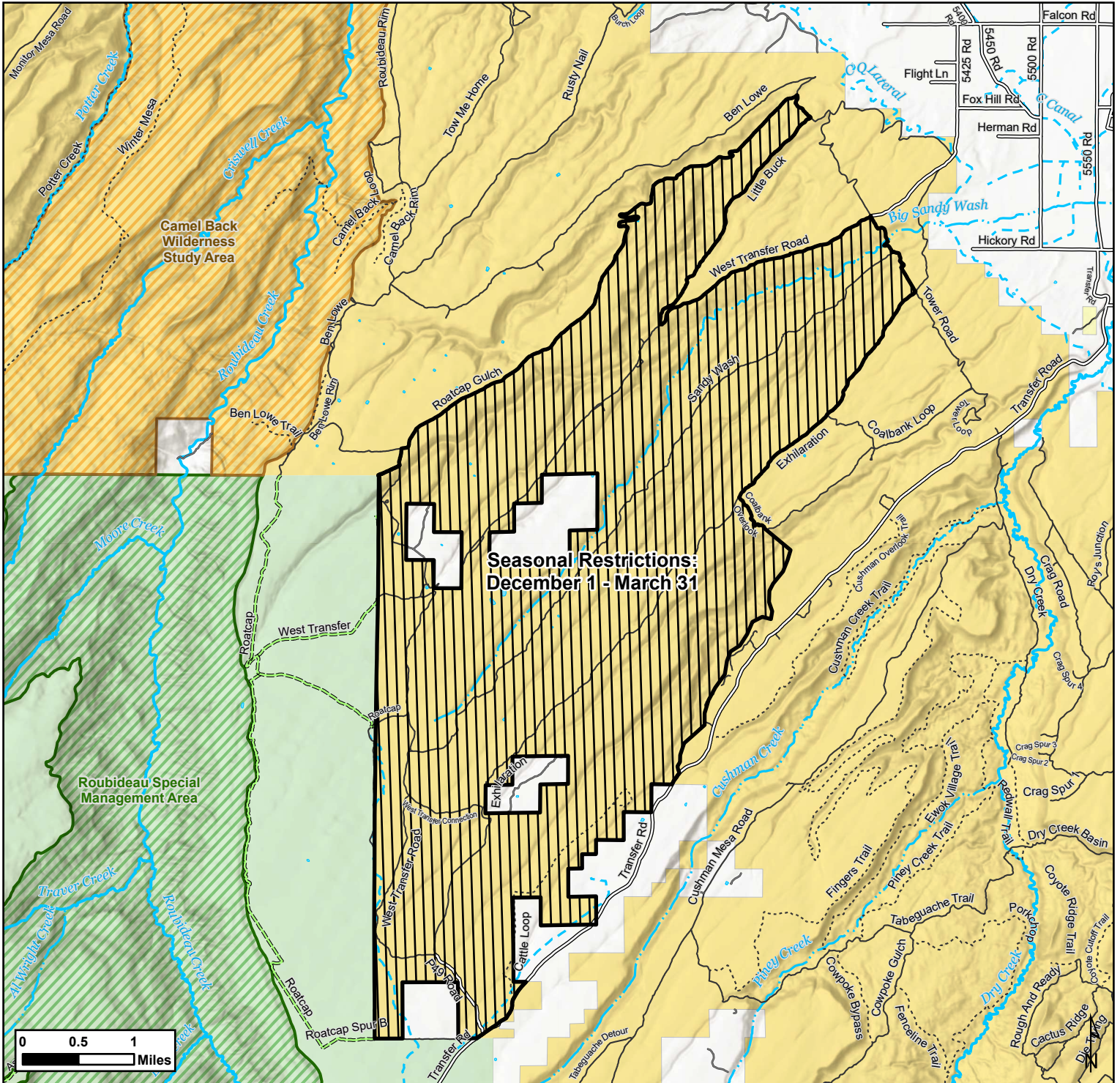


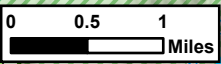


Map 1: Dry Creek - Sandy Wash

BLM CO | Southwest District
 Uncompahgre Field Office
 2465 S Townsend Ave
 Montrose, CO 81401
 (970) 240-5300



**Seasonal Restrictions:
 December 1 - March 31**



- | | |
|--|---------------------------|
| Closed to motorized and mechanized uses (foot/horse allowed) | BLM Wilderness Study Area |
| BLM Primitive Road | Bureau of Land Management |
| BLM Trail (Single Track) | Bureau of Reclamation |
| County Road | Private |
| Local or Private Road | US Forest Service |
| Forest Service Route | |

Map Produced by BLM Uncompahgre Field Office Staff

Date: 11/27/2024
 Map Scale: 1:80,000
 Coordinate System: NAD 1983 UTM Zone 13N
 CO Reference System: U.S. PLSS NMM / 6th M

DISCLAIMER: No warranty is made by the Bureau of Land Management as to the accuracy, reliability, or completeness of these data for individual use or aggregate use with other data. Decisions in this document only apply to BLM lands. Routes depicted on non-BLM lands are displayed for information purposes only and do not grant access to non-BLM lands.

