

# APPENDIX D

Figures for:  
Special Areas Proposal

# **Appendix D: High resolution maps**

*Figures included in this appendix:*

## **D-1**

**Figure 1.** Proposed Special Area Expansions and identified significant resource values.

**Figure 2.** Expansion A – Teshekpuk Lake Special Area (Teshekpuk Caribou Herd Migratory Pathways Expansion).

**Figure 3.** Approximate coverage area for MPMs A-1.1, A-3.1, B-1.4, B-2.1, B-3.1, and D-1.1.

**Figure 4.** Approximate coverage area for MPMs A-1.2, A-2.2, and C-2.2.

**Figure 5.** Approximate coverage area for MPMs A-2.1, A-3.2, B-1.2, B-3.2, and D-1.2.

## **D-2**

**Figure 6.** Expansion B – Teshekpuk Lake Special Area (Teshekpuk Caribou Herd Calving Grounds Expansion).

**Figure 7.** Approximate coverage area for MPMs B-1.1 and D-1.3.

**Figure 8.** Approximate coverage area for MPM B-1.3.

**Figure 9.** Expansion C – Teshekpuk Lake Special Area (Ikpikpuk River Headwaters Expansion).

**Figure 10.** Expansion D – Utukok River Uplands Special Area (Western Arctic Herd Calving Grounds Expansion).

**Figure 11.** Expansion E – Colville River Special Area (Colville River Headwaters Expansion).

**Figure 12.** Expansion F – Peard Bay Special Area (Peard Bay Watershed Expansion).

D-1


Expansion A - Teshekpuk Lake Special Area  
(Teshekpuk Caribou Herd Migratory Pathways Expansion)

Expansion A - Teshekpuk Lake Special Area  
(Teshekpuk Caribou Herd Migratory Pathways Expansion)

**Expansion B - Teshekpuk Lake Special Area  
(Teshekpuk Caribou Herd Calving Grounds Expansion)**

- Teshkepkuk Caribou Herd calving grounds
- Subsistence hunting, fishing, and gathering activities
- Central Arctic Herd summer range
- Polar bear denning habitat, important habitat, and movement corridor
- Nesting grounds for yellow-billed loons and other migratory birds

**Expansion C - Teshekpuk Lake Special Area**  
(Ikpiupuk River Headwaters Expansion)

 -Important raptor and shorebird habitat  
-Teshekpuk Caribou Herd summer and winter ranges and post-calving grounds

243,201 acres

Expansion D – Utukok River Uplands Special Area  
(Western Arctic Herd Calving Grounds Expansion)  
-Western Arctic Herd calving grounds

829,934 acres

**Expansion E - Colville River Special Area  
(Colville River Headwaters Expansion)**


392,301 acres

- Headwaters for downstream Broad Whitefish spawning, rearing, and overwintering habitat
- Important wolverine denning habitat








Peard Bay  
Special Area

**Expansion F - Peard Bay Special Area**  
(Peard Bay Watershed Expansion)

 235,810 acres

- Important shorebird and waterfowl habitat
- Polar bear denning habitat, important habitat, and movement corridor

-Marine mammal haul-out areas

-  Existing NPR-A Special Areas
-  Existing roads
-  Existing well pads
-  Proposed roads
-  Proposed well pads

Map area

11

North

50 miles

Kasegaluk Lagoon  
Special Area

Peard Bay  
Special Area

Expansion F-  
rd Bay Special Area

1998, 1999, 2000, 2001, 2002, 2003, 2004, 2005, 2006, 2007, 2008, 2009, 2010, 2011, 2012, 2013, 2014, 2015, 2016, 2017, 2018, 2019, 2020, 2021, 2022, 2023, 2024, 2025, 2026, 2027, 2028, 2029, 2030, 2031, 2032, 2033, 2034, 2035, 2036, 2037, 2038, 2039, 2040, 2041, 2042, 2043, 2044, 2045, 2046, 2047, 2048, 2049, 2050, 2051, 2052, 2053, 2054, 2055, 2056, 2057, 2058, 2059, 2060, 2061, 2062, 2063, 2064, 2065, 2066, 2067, 2068, 2069, 2070, 2071, 2072, 2073, 2074, 2075, 2076, 2077, 2078, 2079, 2080, 2081, 2082, 2083, 2084, 2085, 2086, 2087, 2088, 2089, 2090, 2091, 2092, 2093, 2094, 2095, 2096, 2097, 2098, 2099, 2100, 2101, 2102, 2103, 2104, 2105, 2106, 2107, 2108, 2109, 2110, 2111, 2112, 2113, 2114, 2115, 2116, 2117, 2118, 2119, 2120, 2121, 2122, 2123, 2124, 2125, 2126, 2127, 2128, 2129, 2130, 2131, 2132, 2133, 2134, 2135, 2136, 2137, 2138, 2139, 2140, 2141, 2142, 2143, 2144, 2145, 2146, 2147, 2148, 2149, 2150, 2151, 2152, 2153, 2154, 2155, 2156, 2157, 2158, 2159, 2160, 2161, 2162, 2163, 2164, 2165, 2166, 2167, 2168, 2169, 2170, 2171, 2172, 2173, 2174, 2175, 2176, 2177, 2178, 2179, 2180, 2181, 2182, 2183, 2184, 2185, 2186, 2187, 2188, 2189, 2190, 2191, 2192, 2193, 2194, 2195, 2196, 2197, 2198, 2199, 2200, 2201, 2202, 2203, 2204, 2205, 2206, 2207, 2208, 2209, 2210, 2211, 2212, 2213, 2214, 2215, 2216, 2217, 2218, 2219, 2220, 2221, 2222, 2223, 2224, 2225, 2226, 2227, 2228, 2229, 2230, 2231, 2232, 2233, 2234, 2235, 2236, 2237, 2238, 2239, 2240, 2241, 2242, 2243, 2244, 2245, 2246, 2247, 2248, 2249, 2250, 2251, 2252, 2253, 2254, 2255, 2256, 2257, 2258, 2259, 2260, 2261, 2262, 2263, 2264, 2265, 2266, 2267, 2268, 2269, 2270, 2271, 2272, 2273, 2274, 2275, 2276, 2277, 2278, 2279, 2280, 2281, 2282, 2283, 2284, 2285, 2286, 2287, 2288, 2289, 2290, 2291, 2292, 2293, 2294, 2295, 2296, 2297, 2298, 2299, 2300, 2301, 2302, 2303, 2304, 2305, 2306, 2307, 2308, 2309, 2310, 2311, 2312, 2313, 2314, 2315, 2316, 2317, 2318, 2319, 2320, 2321, 2322, 2323, 2324, 2325, 2326, 2327, 2328, 2329, 2330, 2331, 2332, 2333, 2334, 2335, 2336, 2337, 2338, 2339, 2340, 2341, 2342, 2343, 2344, 2345, 2346, 2347, 2348, 2349, 2350, 2351, 2352, 2353, 2354, 2355, 2356, 2357, 2358, 2359, 2360, 2361, 2362, 2363, 2364, 2365, 2366, 2367, 2368, 2369, 2370, 2371, 2372, 2373, 2374, 2375, 2376, 2377, 2378, 2379, 2380, 2381, 2382, 2383, 2384, 2385, 2386, 2387, 2388, 2389, 2390, 2391, 2392, 2393, 2394, 2395, 2396, 2397, 2398, 2399, 2400, 2401, 2402, 2403, 2404, 2405, 2406, 2407, 2408, 2409, 2410, 2411, 2412, 2413, 2414, 2415, 2416, 2417, 2418, 2419, 2420, 2421, 2422, 2423, 2424, 2425, 2426, 2427, 2428, 2429, 2430, 2431, 2432, 2433, 2434, 2435, 2436, 2437, 2438, 2439, 2440, 2441, 2442, 2443, 2444, 2445, 2446, 2447, 2448, 2449, 2450, 2451, 2452, 2453, 2454, 2455, 2456, 2457, 2458, 2459, 2460, 2461, 2462, 2463, 2464, 2465, 2466, 2467, 2468, 2469, 2470, 2471, 2472, 2473, 2474, 2475, 2476, 2477, 2478, 2479, 2480, 2481, 2482, 2483, 2484, 2485, 2486, 2487, 2488, 2489, 2490, 2491, 2492, 2493, 2494, 2495, 2496, 2497, 2498, 2499, 2500, 2501, 2502, 2503, 2504, 2505, 2506, 2507, 2508, 2509, 2510, 2511, 2512, 2513, 2514, 2515, 2516, 2517, 2518, 2519, 2520, 2521, 2522, 2523, 2524, 2525, 2526, 2527, 2528, 2529, 2530, 2531, 2532, 2533, 2534, 2535, 2536, 2537, 2538, 2539, 2540, 2541, 2542, 2543, 2544, 2545, 2546, 2547, 2548, 2549, 2550, 2551, 2552, 2553, 2554, 2555, 2556, 2557, 2558, 2559, 2560, 2561, 2562, 2563, 2564, 2565, 2566, 2567, 2568, 2569, 2570, 2571, 2572, 2573, 2574, 2575, 2576, 2577, 2578, 2579, 2580, 2581, 2582, 2583, 2584, 2585, 2586, 2587, 2588, 2589, 2590, 2591, 2592, 2593, 2594, 2595, 2596, 2597, 2598, 2599, 2600, 2601, 2602, 2603, 2604, 2605, 2606, 2607, 2608, 2609, 2610, 2611, 2612, 2613, 2614, 2615, 2616, 2617, 2618, 2619, 2620, 2621, 2622, 2623, 2624, 2625, 2626, 2627, 2628, 2629, 2630, 2631, 2632, 2633, 2634, 2635, 2636, 2637, 2638, 2639, 2640, 2641, 2642, 2643, 2644, 2645, 2646, 2647, 2648, 2649, 2650, 2651, 2652, 2653, 2654, 2655, 2656, 2657, 2658, 2659, 2660, 2661, 2662, 2663, 2664, 2665, 2666, 2667, 2668, 2669, 2670, 2671, 2672, 2673, 2674, 2675, 2676, 2677, 2678, 2679, 26



Tshekpuk Lake  
Special Area

### Expansion B- Teshekpuk Lake

Expansion D-  
Utukok River -  
Uplands Special  
Area

Expansion D-  
Utukok River  
Uplands Special  
Area

Utukok River  
Uplands  
Special Area

## Expansion E-Colville River Special Area

Colville River Special Conservation Area

## Expansion A- Teshekpuk Lake Special Area



**The  
Wilderness  
Society**

TWS map, August 2024.  
Data: BLM, USGS, NASA, Alaska DNR,  
North Slope Science Initiative, TWS

**Figure 1.** Proposed Special Area Expansions and identified significant resource values.

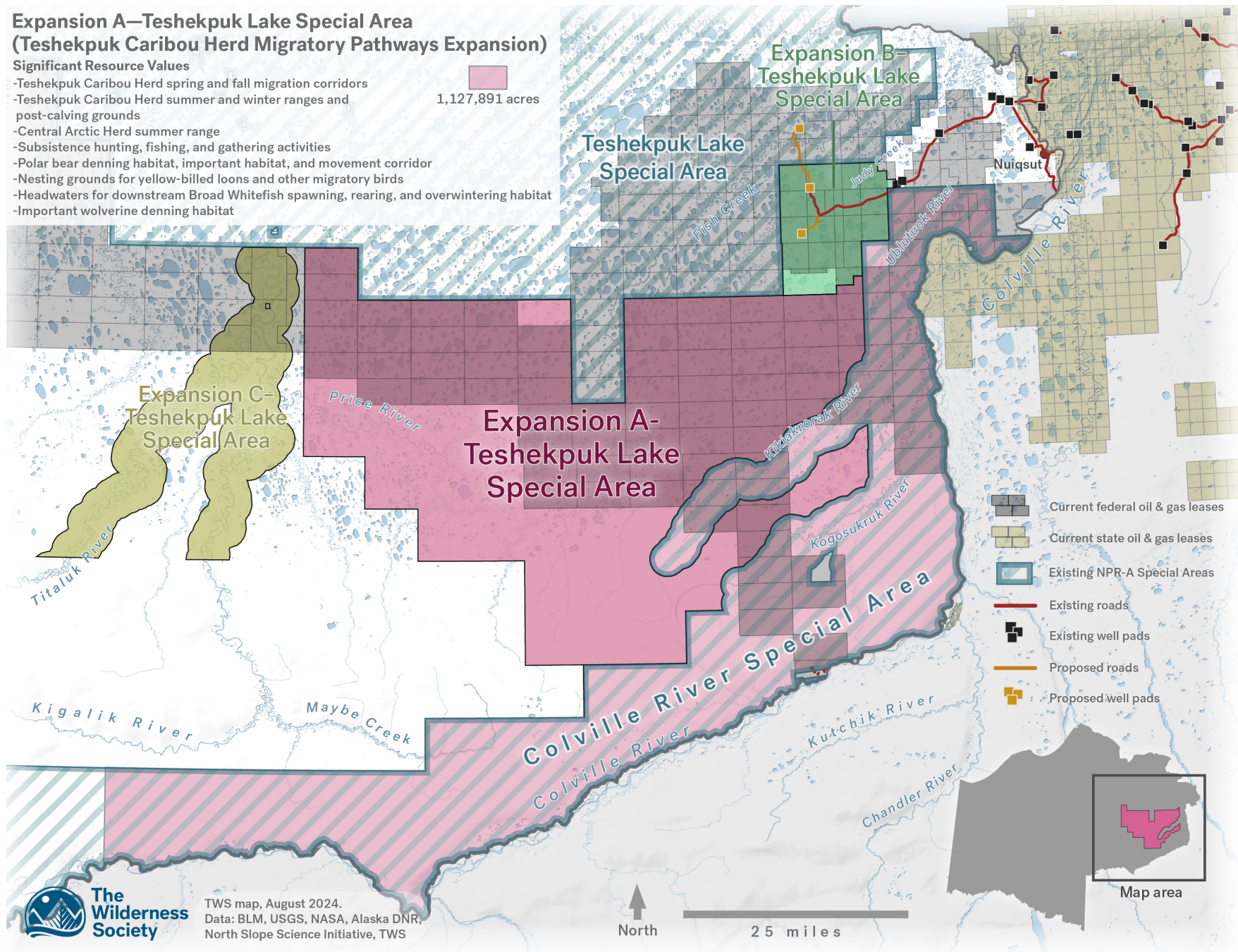


## Expansion A—Teshekpuk Lake Special Area (Teshekpuk Caribou Herd Migratory Pathways Expansion)

### Significant Resource Values

- Teshekpuk Caribou Herd spring and fall migration corridors
- Teshekpuk Caribou Herd summer and winter ranges and post-calving grounds
- Central Arctic Herd summer range
- Subsistence hunting, fishing, and gathering activities
- Polar bear denning habitat, important habitat, and movement corridor
- Nesting grounds for yellow-billed loons and other migratory birds
- Headwaters for downstream Broad Whitefish spawning, rearing, and overwintering habitat
- Important wolverine denning habitat

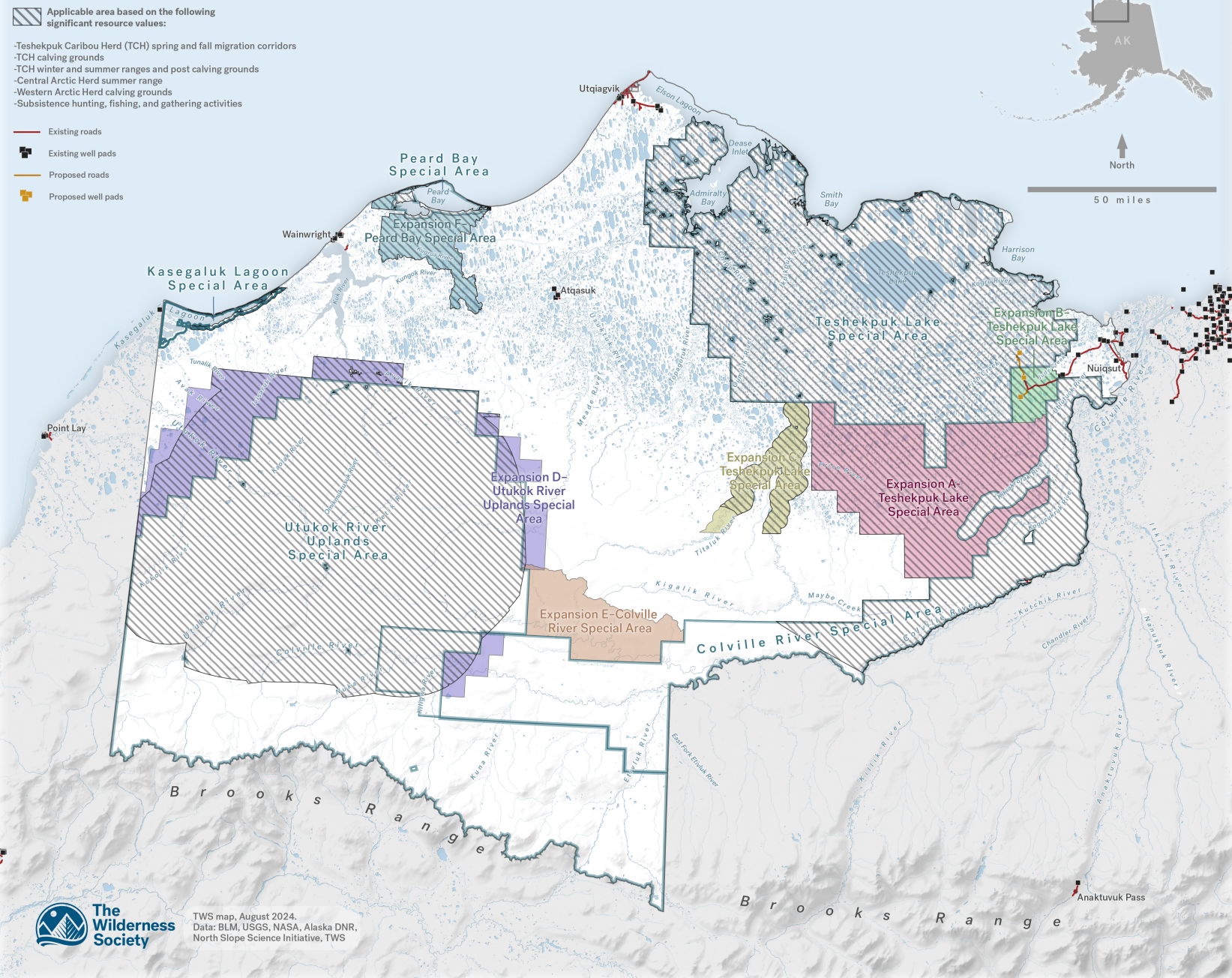
1,127,891 acres



**Figure 2.** Expansion A – Teshekpuk Lake Special Area (Teshekpuk Caribou Herd Migratory Pathways Expansion).



# MPM: New permanent gravel roads will be prohibited.



**Figure 3.** Approximate coverage area for MPMs A-1.1, A-3.1, B-1.4, B-2.1, B-3.1, and D-1.1.



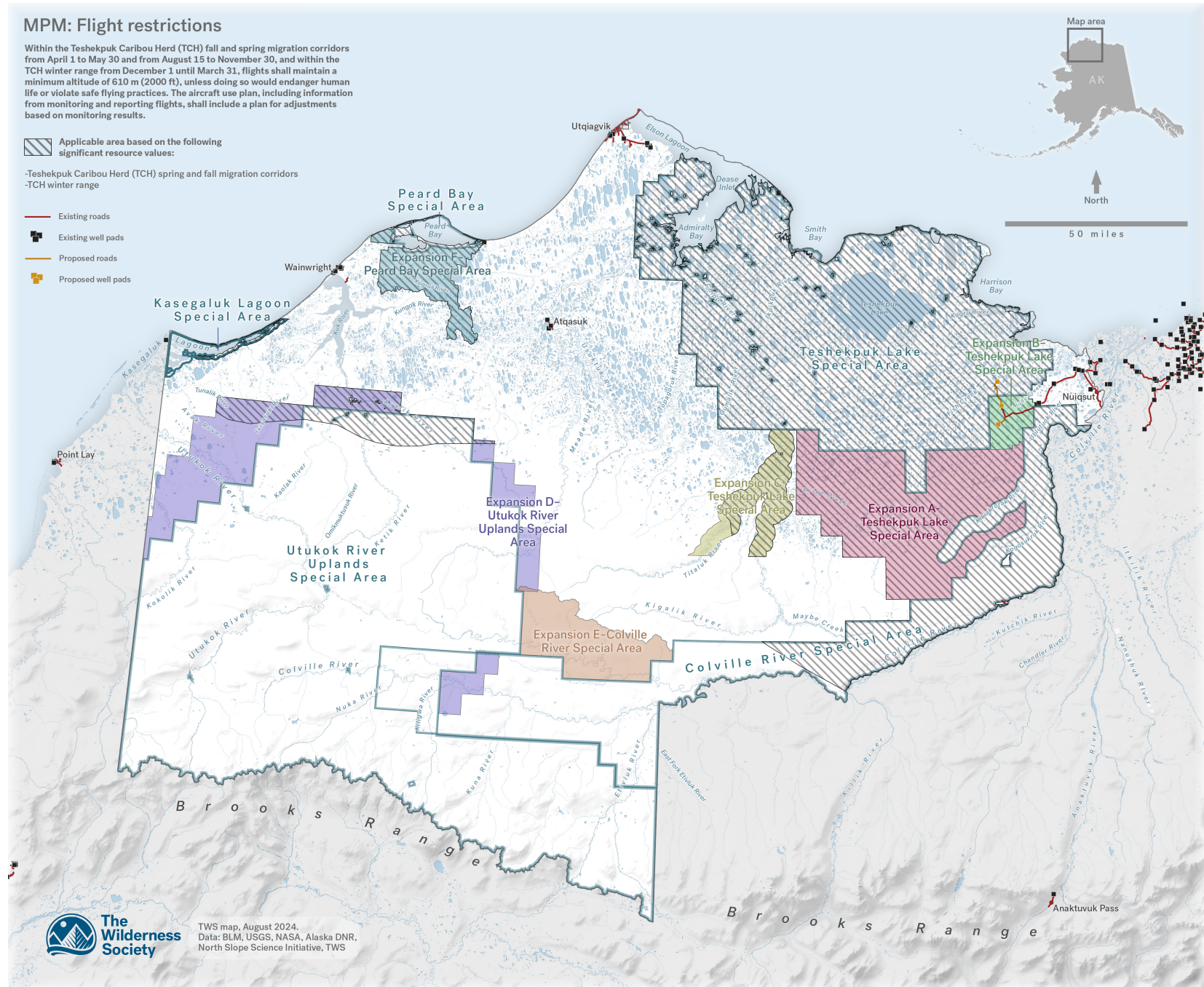
## MPM: Flight restrictions

Within the Teshekpuk Caribou Herd (TCH) fall and spring migration corridors from April 1 to May 30 and from August 15 to November 30, and within the TCH winter range from December 1 until March 31, flights shall maintain a minimum altitude of 610 m (2000 ft), unless doing so would endanger human life or violate safe flying practices. The aircraft use plan, including information from monitoring and reporting flights, shall include a plan for adjustments based on monitoring results.

Applicable area based on the following significant resource values:

-Teshekpuk Caribou Herd (TCH) spring and fall migration corridors  
-TCH winter range

- Existing roads
- Existing well pads
- Proposed roads
- Proposed well pads



**Figure 4.** Approximate coverage area for MPMs A-1.2, A-2.2, and C-2.2.



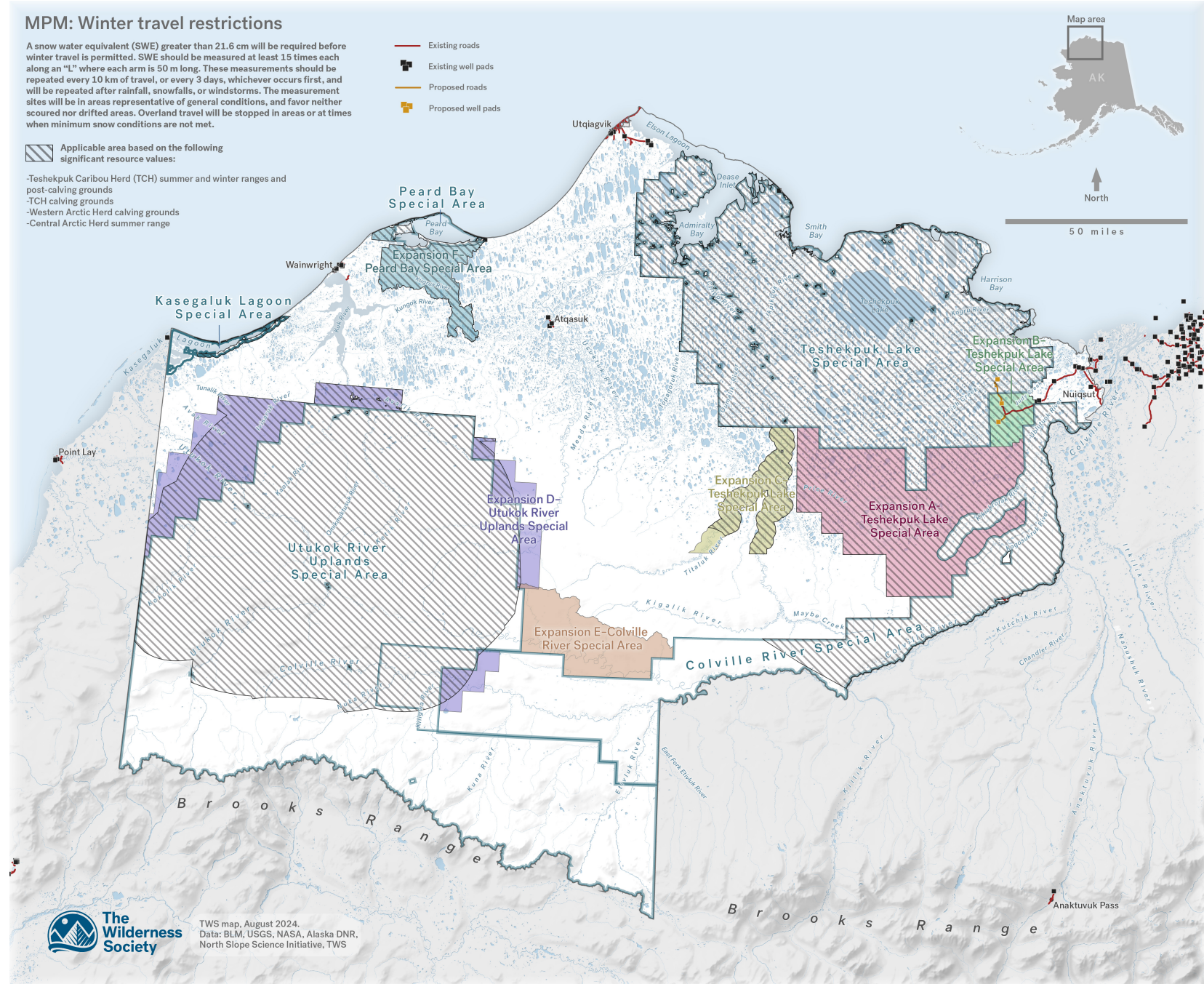
## MPM: Winter travel restrictions

A snow water equivalent (SWE) greater than 21.6 cm will be required before winter travel is permitted. SWE should be measured at least 15 times each along an "L" where each arm is 50 m long. These measurements should be repeated every 10 km of travel, or every 3 days, whichever occurs first, and will be repeated after rainfall, snowfalls, or windstorms. The measurement sites will be in areas representative of general conditions, and favor neither scoured nor drifted areas. Overland travel will be stopped in areas or at times when minimum snow conditions are not met.

Applicable area based on the following significant resource values:

- Teshekpuk Caribou Herd (TCH) summer and winter ranges and post-calving grounds
- TCH calving grounds
- Western Arctic Herd calving grounds
- Central Arctic Herd summer range

- Existing roads
- Existing well pads
- Proposed roads
- Proposed well pads



**Figure 5.** Approximate coverage area for MPMs A-2.1, A-3.2, B-1.2, B-3.2, and D-1.2.