



U.S. Department of the Interior
Bureau of Land Management

Colorado Recreation

Backyard to Backcountry



Guide



White water rafting Browns Canyon NCA
BLM Photo by Bob Wick



BUREAU OF LAND MANAGEMENT | COLORADO

DIRECTOR'S MESSAGE



Doug Vilsack

Colorado State Director

Bureau of Land Management (BLM) lands in Colorado provide endless opportunities for outdoor recreation, from hunting and fishing to camping to biking and hiking. Our sinuous canyons also cradle rivers, the lifeblood of this headwaters state, from the famous and popular Colorado and Arkansas to the remote reaches of the Dolores, Gunnison and Yampa.

BLM lands and watercourses are an outstanding recreational asset, but they need care and investment. That is why the BLM, with support from partner organizations, is working to develop and sustain the health, diversity, and productivity of federal public lands. Our recreation program works with student interns, youth corps, and volunteers on projects that will enhance the public's experience and increase access to recreational activities for underserved communities.

BLM's Blueprint for 21st Century Outdoor Recreation provides direction for how members of the public can invest in and enjoy these special places, from scenic rivers, to prime big game habitat, to exciting trail systems. One of the key partners in helping BLM Colorado execute this vision is the Foundation for America's Public Lands, which helps the BLM secure resources to ensure the public can enjoy the magic of public lands and waters, appreciate the shared heritage of these spaces, and take active roles in stewardship of our natural heritage.

I invite you to use this guide not only to prepare for your trip, but to discover ways that you can support public lands and help sustain them for future generations.

Enjoy your public lands and be safe out there.

BLM Colorado Recreation

Backyard to Backcountry

Bureau of Land Management (BLM) Colorado is committed to serving the American public and providing exceptional recreational opportunities on public lands as part of its multiple use mission. More than a quarter of public lands in Colorado are managed specifically for recreation and tourism. Recreation on BLM lands is all about the visitor's freedom to choose where to go and what to do. Unlike many other recreation destinations, the BLM's public lands are still quite rustic. There are no entrance stations and few developed recreation areas.

Colorado's local communities are essential to our shared conservation stewardship ethic. Dozens of nearby communities provide permitted guiding and outfitting services, gear and equipment sales, and lodging. BLM Colorado works with our local partners to promote multiple uses such as livestock grazing and energy development on public lands and provide quality recreation opportunities.

Public lands are not set aside solely for recreation; they offer energy potential and — in an increasingly urban world — vast open spaces. In many places, the flavor of the Old West is still plainly visible in historic mining structures as well as contemporary ranching activities.

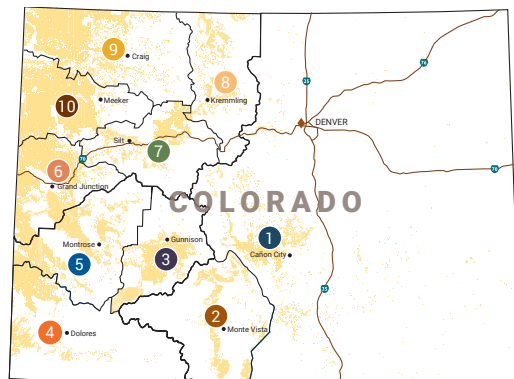


SYMBOLS LEGEND

- | | |
|---------------------|-----------------|
| Camping | Fishing |
| Hiking | Kayaking |
| Horse Trail | Canoeing |
| Mt. Biking | Rafting |
| Dirt Bike Trail | Rock Climbing |
| 4WD | Hunting |
| ATV Trail | Winter Rec Area |
| Off-Highway Vehicle | Snowshoeing |
| Back Country Byway | Historic Site |
| Scenic Area | Petroglyph |
| Wildlife Viewing | Scenic Geology |
| | Fossil Site |

BLM Colorado Offices

- 1 ROYAL GORGE FIELD OFFICE
- 2 SAN LUIS VALLEY FIELD OFFICE
- 3 GUNNISON FIELD OFFICE
- 4 TRES RIOS FIELD OFFICE
- 5 UNCOMPAHGRE FIELD OFFICE
- 6 GRAND JUNCTION FIELD OFFICE
- 7 COLORADO RIVER VALLEY FIELD OFFICE
- 8 KREMMLING FIELD OFFICE
- 9 LITTLE SNAKE FIELD OFFICE
- 10 WHITE RIVER FIELD OFFICE



For more information, contact the BLM field office for the area you are planning to visit, or visit www.blm.gov/programs/recreation/recreation-activities/colorado

Know Before You Go

BLM Colorado wants you to have the best experience possible on your public lands. When planning your trip, take all necessary safety precautions and be aware of regulations. Take into consideration the weather conditions, necessary equipment and wildlife inhabiting the area. Don't forget to pack out all trash.

CAMPING

BLM—managed public lands provide a variety of options for overnight trips:

- **Developed campgrounds** may include a variety of facilities, such as restrooms, potable water, fire rings, picnic areas, garbage cans, tent pads, etc.
- **Dispersed (undeveloped) campsites** are normally recognized by a hardened surface with no vegetation, where others have already camped. Use pre-existing fire rings or firepans, and be sure you know the local fire restrictions. Designated Campsite Areas are a hybrid between dispersed and developed camping. These sites are limited to designated areas and might offer a few amenities such as fire rings or picnic areas.

OFF-HIGHWAY VEHICLES

To ensure that all visitors have a chance to enjoy their public lands, visitors must abide by vehicle travel designations. In most BLM areas, OHVs are limited to operating on roads and trails that are identified on travel maps and/or posted as available for motorized use. Please check in with your local field office for more information on the best locations for motorized recreation.

TARGET SHOOTING

Target shooting is permitted in most locations on BLM lands in Colorado. However, some areas are closed to target shooting for safety and resource protection. To ensure the well-being and enjoyment of all visitors on public lands, please follow laws, regulations and guidelines.

CULTURAL SITES

Archaeologists study cultural sites to help understand the past. These important sites act as an outdoor classroom for all ages and provide insight into the lives of previous cultures. Collecting artifacts – including arrowheads – from federal public lands or Indian Tribal lands is illegal under federal laws and regulations. Violators may face prosecution and prison sentences of up to one year or more and possible fines.

Never touch painted or plastered walls, petroglyphs or pictographs. The oil and dirt from hands can eventually destroy these remnants of past lives. Leave all artifacts exactly where you find them for others to enjoy.

BLM Colorado

offers a diversity of recreation activities and destinations.

Here are a just few of the highlights:

FISHING

With four Gold Medal trout waters and three Blue Ribbon waters, some of Colorado's best fishing is found on BLM public lands. Arkansas Headwaters Recreation Area, Gunnison Gorge National Conservation Area and the Upper Colorado River are just a few areas that offer excellent fishing opportunities.

BYWAYS

Several scenic and historic byways such as the Alpine Loop Backcountry Byway, Dinosaur Diamond Scenic and Historic Byway, and Trail of the Ancients Scenic Byway pass through BLM Colorado lands. Each of these routes offers a multitude of activities and interpretive sites highlighting their unique attractions.

MOUNTAIN BIKING

Some of the nation's best mountain biking can be found on Colorado's public lands. Phil's World and Lunch Loop Trail System near Grand Junction offer challenging terrain for mountain bikers; Hartman Rocks Recreation Area is home to 44 miles of single-track trails with views of the Gunnison Basin; and Red Hill Recreation Area's outstanding mountain biking is available in close proximity to Carbondale.

WATER RECREATION

Colorado's many rivers provide a range of rafting experiences, from the leisurely floats through the Ruby-Horsethief River Corridor to the Class II-Class IV river rafting in the Gunnison Gorge Wilderness, as well as the challenging rapids in the Arkansas Headwaters Recreation Area.



BLM lands in Colorado range from alpine tundra, colorful canyons and mesas to rolling sage covered hills.

WINTER SPORTS

Winter sports enthusiasts can enjoy Nordic skiing at the Emerald Mountain Recreation Area just outside Steamboat Springs or seek adventure at the experts-only Silverton Ski Area.

OHVs

BLM Colorado offers a variety of motorized recreation opportunities, from the OHV play areas in Flat Top-Peach Valley and Grand Valley to extreme rock crawling at Wolford Mountain Recreation Area or Independence Trail in the Gold Belt Recreation Area.

ROCK CLIMBING

A variety of rock types, such as sandstone and limestone, offer visitors the chance to enjoy traditional climbing, sport climbing, scrambling and more in areas like Penitente Canyon and Dominguez-Escalante National Conservation Area.

HERITAGE TOURING

BLM lands also offer recreation with scientific and cultural education opportunities available at the Kremmling Cretaceous Ammonite Locality, Canyon Pintado Historic District, Gold Belt Tour Scenic and Historic Byway, McInnis Canyons National Conservation Area and Canyons of the Ancients National Monument.

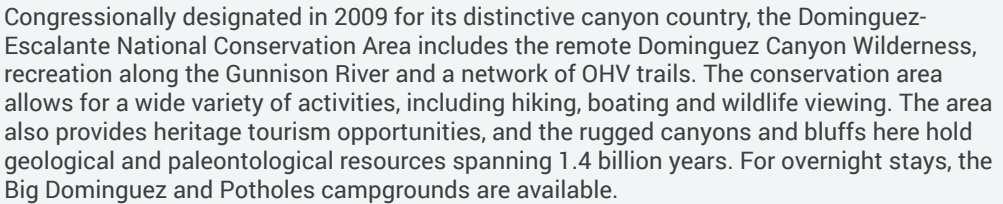
HUNTING

The majority of the 8.3 million acres of BLM lands in Colorado are open to hunting under Colorado Parks and Wildlife regulations, including some of the best big game opportunities in the state. Later seasons are particularly popular as elk and mule deer move to lower elevations. BLM Colorado works closely with Colorado Parks and Wildlife to ensure wildlife have healthy habitat on public lands.



FOR MORE INFORMATION VISIT: www.blm.gov/programs/national-conservation-lands

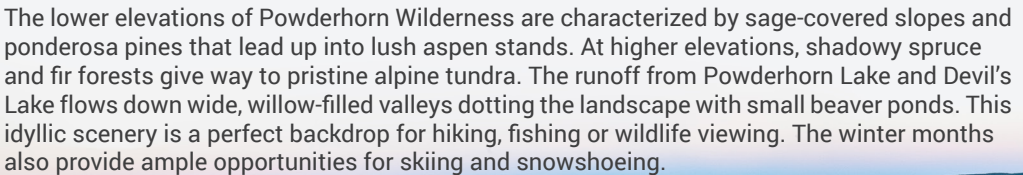
PAGE 17 & 19 | UNCOMPAHGRE AND GRAND JUNCTION FIELD OFFICES



PAGE 17 | UNCOMPAHGRE FIELD OFFICE



PAGE 13 | GUNNISON FIELD OFFICE MAP



MCINNIS CANYONS NATIONAL CONSERVATION AREA

PAGE 19 | GRAND JUNCTION FIELD OFFICE



Located adjacent to Colorado National Monument near Fruita and Grand Junction, McInnis Canyons National Conservation Area is one of BLM Colorado's most diverse desert recreation areas. Hikers will be stunned by the red-rock cliffs and arches of Black Ridge Canyons Wilderness while the Ruby-Horsethief River Corridor offers Class I and II flatwater boating and permit camping nearby. The area is home to mountain lions, desert bighorn sheep, elk, deer, eagles and collared lizards. The area also offers mountain biking on Kokopelli's and Mack Ridge trails and OHV riding in Rabbit Valley. The Trail Through Time, Dinosaur Hill and Fruita Paleontological Area provide visitors a chance to learn about fossils and paleontological finds in the area.

BROWNS CANYON NATIONAL MONUMENT

PAGE 9 | ROYAL GORGE FIELD OFFICE



For centuries, granite cliffs, colorful rock outcroppings and stunning mountain vistas of Browns Canyon National Monument have attracted visitors from around the world. Diverse geological, ecological, riparian, cultural and historic resources are revealed as visitors traverse 3,000-foot elevation range primitive hiking trails. Flowing through the monument, the Arkansas River is one of the nation's most popular whitewater rafting destinations. Browns Canyon is a unique segment, allowing visitors the chance to enjoy solitude with breathtaking scenery. Anglers test their skills catching brown and rainbow trout in the Arkansas River's Gold Medal waters.

CANYONS OF THE ANCIENTS NATIONAL MONUMENT

PAGE 15 | TRES RIOS FIELD OFFICE



Located in southwest Colorado, Canyons of the Ancients National Monument is home to thousands of Ancestral archaeological sites reflecting Pueblo and other Native American cultures. Visitors can view a variety of Pueblos or hike the popular Sand Canyon Trail. Canyons of the Ancients Visitor Center and Museum offers information about the area and is an important place to stop before heading into the Monument. For those wishing to learn about the greater Four Corners region, the Trail of the Ancients Scenic Byway runs through the Monument and provides a scenic tour of the area.

UNCOMPAHGRE WILDERNESS

PAGE 13 | GUNNISON FIELD OFFICE



The Uncompahgre Wilderness Area, located within the San Juan Mountains, boasts two fourteeners and more than 34 peaks that tower over 13,000 feet in elevation. The area encompasses alpine tundra meadows, rock castles and densely-forested canyons. More than 100 miles of trails make this wilderness area perfect for hikers, backpackers and horseback riders. The varied landscape provides opportunities for camping, hunting and rock climbing as well. Several forks of the Cimarron River roar through the wilderness, creating numerous alpine lakes and streams – many available for fishing.



ROYAL GORGE

FIELD OFFICE



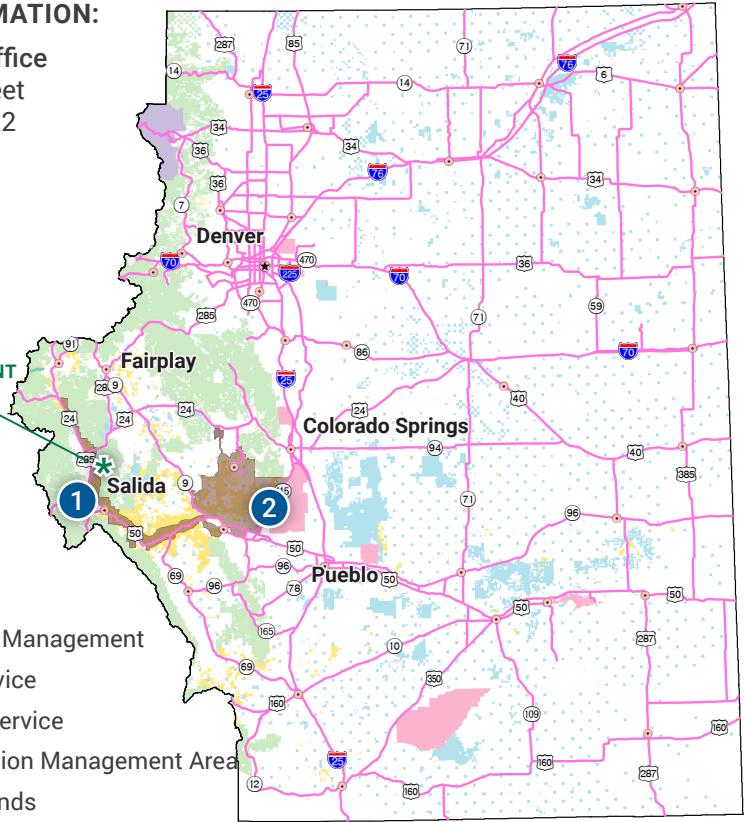
FOR MORE INFORMATION:

Royal Gorge Field Office
3028 East Main Street
Cañon City, CO 81212
719-269-8500

* BROWNS CANYON
NATIONAL MONUMENT

LEGEND

- Bureau of Land Management
- U.S. Forest Service
- National Park Service
- Special Recreation Management Area
- Other Public Lands



Rafting on the Arkansas River



White water rafting Browns Canyon NCA
BLM Photo by Bob Wick

1 ARKANSAS HEADWATERS RECREATION AREA

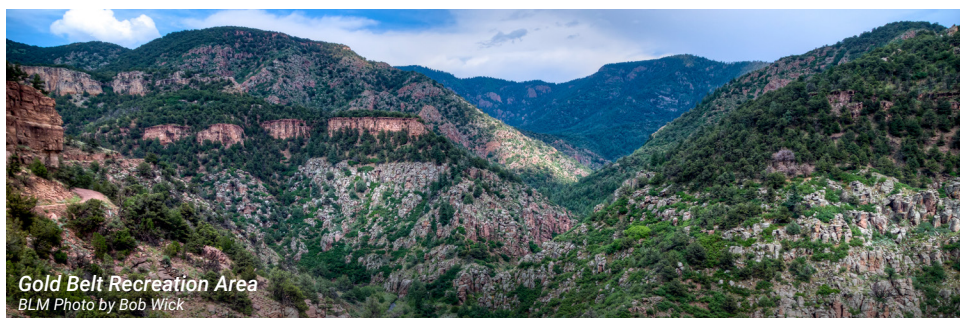


The steep canyons and towering peaks along the Arkansas Headwaters Recreation Area feature some of the state's best whitewater rafting with rapids ranging from Class II to Class V. Anglers at the Arkansas River enjoy world-class fishing in these Gold Medal waters. Campgrounds, picnic areas and boat ramps enhance the visitor's stay along the entire length of the river. Community trail systems connected to Buena Vista and Salida offer great hiking and mountain biking adventures. Big Bend OHV Track, Fourmile and Texas Creek offer exceptional OHV opportunities.

2 GOLD BELT RECREATION AREA



The Gold Belt Recreation Area is rich in local heritage as visitors rediscover the world's largest gold rush. The Gold Belt Tour Scenic and Historic Byway follows a historic railroad bed and an old stage road connecting the Cripple Creek and Victor Mining District to Florence and Cañon City. Stops along the byway feature audio driving tours and videos to showcase Colorado history. Garden Park, the birthplace of modern paleontology, has several highlighted exhibits featuring dinosaur fossils found in the area and a National Natural Landmark. High-quality trail opportunities range from primitive hiking in Beaver Creek Wilderness Study Area to motorized adventures in Seep Springs or Penrose Commons. Rock climbers seek adventure at the world-famous Shelf Road Rock Climbing Area, which boasts more than 1,000 climbing routes and two campgrounds.



Gold Belt Recreation Area
BLM Photo by Bob Wick

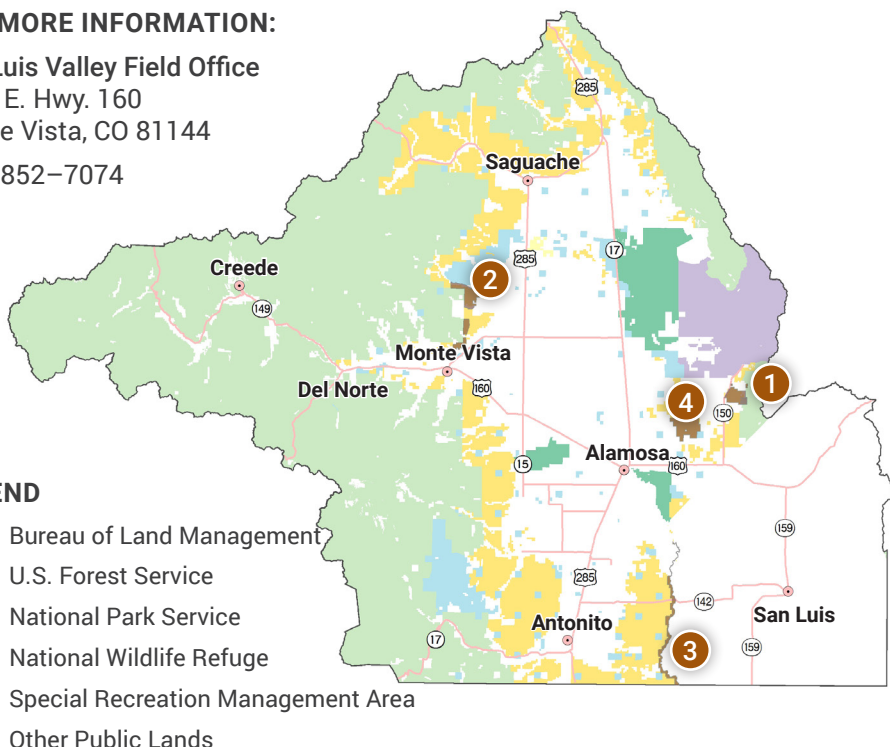
SAN LUIS VALLEY

FIELD OFFICE

• Denver
COLORADO

FOR MORE INFORMATION:

San Luis Valley Field Office
1313 E. Hwy. 160
Monte Vista, CO 81144
719-852-7074

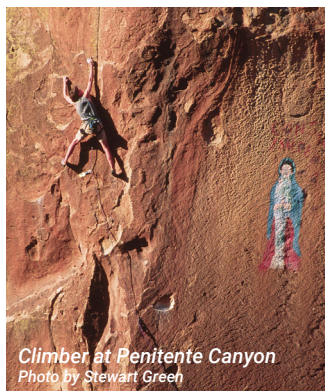




1 ZAPATA FALLS RECREATION AREA



A short, yet slippery hike leads to the view of a 25-foot waterfall at Zapata Falls Recreation Area. During the summer months, the falls provide a cooling oasis, but during the winter months the waterfall freezes into an enormous column of ice, perfect for the experienced ice climber. Travelers along Los Caminos Antiguos Scenic and Historic Byway can stop for an overnight stay at one of 24 campsites in Zapata Falls.



2 PENITENTE CANYON RECREATION AREA



The pinnacles of Penitente Canyon attract rock climbers from far and wide. Technical climbers can enjoy more than 300 world-class routes through the canyon. Developed and primitive camping are available for overnight stays, while an extensive trail system caters to hikers, mountain bikers and equestrians. Penitente Canyon also holds remnants of its unique history ranging from rock art to wagon ruts from early settlers. Originally a spiritual haven for a Spanish religious group that gave the canyon its name, the area also features a modern painting of the "Virgin de Guadalupe."

3 RIO GRANDE NATURAL AREA



Located in southern Colorado, the Rio Grande River slowly meanders down to the Colorado-New Mexico border. The generally calm nature of the river offers fishing, kayaking and paddle boarding opportunities. A hike, takeout and trail are available to avoid challenging whitewater rapids where the river enters New Mexico.

4 BLANCA WETLANDS RECREATION AREA



These unique Colorado wetlands are home to more than 200 ponds, marshes and playas, making this recreation area an excellent habitat for a diverse population of waterfowl. The complex trail system winding through Blanca Wetlands allows visitors to appreciate the diverse landscape while hiking through the area. Boardwalks located throughout the wetlands offer exceptional wildlife viewing opportunities. Seasonally open July 15-February 15.



GUNNISON



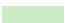
FIELD OFFICE

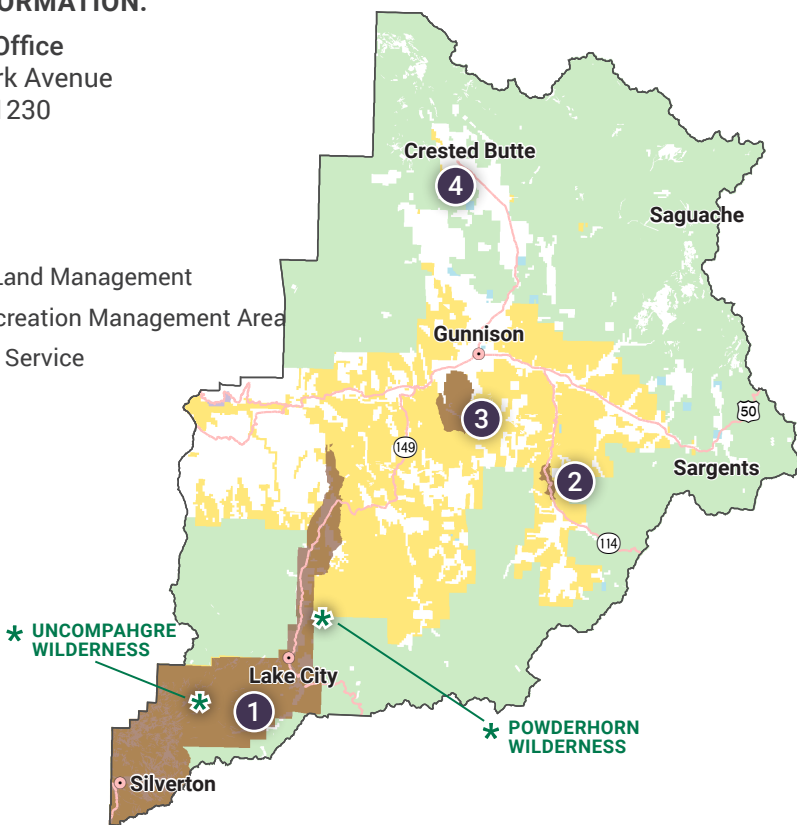


FOR MORE INFORMATION:

Gunnison Field Office
2500 E. New York Avenue
Gunnison, CO 81230
970-642-4940

LEGEND

-  Bureau of Land Management
-  Special Recreation Management Area
-  U.S. Forest Service



Hiking at Alpine Loop
BLM Photo by Bob Wick



Uncompahgre Wilderness

BLM Photo by Bob Wick

1 ALPINE LOOP



In addition to three fourteeners and more than a dozen alpine peaks, the Alpine Loop features spectacular landscapes, winding streams and picturesque wildflower displays. Not only does this area cater to those who love wildlife and nature viewing, the area also offers trails designated for OHVs and other types of motorized recreation.

Historic mining areas are found throughout the Silverton area, including the Animas Forks townsite and Sound Democrat Mine. During the summer months, the area features 4-wheel trails and tours, which make it easy to explore the Alpine Loop Backcountry Byway. The winter season offers a variety of winter sports including skiing at the expert-level, 1,300-acre Silverton Ski Area and adjacent 13,000-acre permitted heliskiing area.

2 COCHETOPA CANYON



This scenic recreation area is a destination perfect for a day of fishing. The dense vegetation and steep canyon walls that line Cochetopa Creek provide a calm and relaxing place to fish with developed campsites and picnic areas located along the creek. Beautiful rock formations line Highway 114 and lead down to this little oasis located between Saguache and Gunnison.

3 HARTMAN ROCKS



Hartman Rocks is a popular recreation area just a few miles southwest of Gunnison. The central attraction to this area is the "Ring Dike," a spectacular rock formation approximately six miles in diameter. This rugged landscape features high quality trails and dirt roads for mountain biking.

4 OH BE JOYFUL RECREATION AREA



Named after a nearby mountain stream, Oh Be Joyful features beautiful waterfalls and world-class kayaking during high water flow. Filled with lush forests and colorful fields of wildflowers, this area offers horseback riding, hiking and backpacking opportunities during the summer months. For those who are looking for an overnight stay, Oh Be Joyful Campground is conveniently located along the Slate River with 30 campgrounds available. The recreation area is also close to Crested Butte, where lodging, restaurants and shops are available.

TRES RIOS FIELD OFFICE

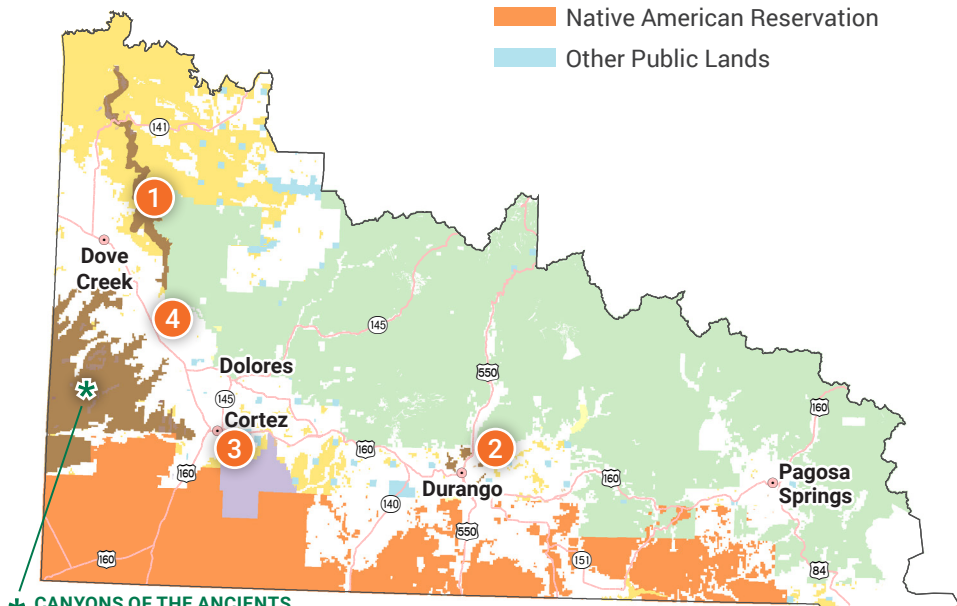
• Denver
COLORADO

FOR MORE INFORMATION:

Tres Rios Field Office
29211 Highway 184
Dolores, CO 81323
970-882-7296

LEGEND

- Bureau of Land Management
- Special Recreation Management Area
- U.S. Forest Service
- National Park Service
- Native American Reservation
- Other Public Lands





Canyons of the Ancients
BLM Photo by Bob Wick

1 DOLORES RIVER RECREATION AREA



Beginning high in the San Juan Mountains, the Dolores River descends into the red canyons of the Dolores River Recreation Area. In select segments of the river, and in certain years, technical rapids are available for remote, multiday rafting trips. Check with the Tres Rios Field Office or the Dolores Water Conservancy District for flow information. The dense vegetation of the canyon and surrounding mesas is home to species such as bighorn sheep and river otters, making this area perfect for wildlife viewing. The portion of the river from Slickrock to Bedrock flows through the Dolores River Canyon Wilderness Study Area, where desert canyon primitive recreation opportunities are available.

2 DURANGO RECREATION AREA



Situated alongside the town of Durango and near smaller foothills of the San Juan Mountains, the Durango Recreation Area is perfect for a variety of recreational activities. Hiking and mountain biking trails are readily accessible throughout the area with facilities for renting equipment in nearby Durango. Elk and deer in the area make for exceptional wildlife viewing. Visit the Grandview Ridge and Animas Mountain areas for extensive nonmotorized trails and exceptional views of the Animas River Valley. Visitors can also head to Turtle Lake and East Animas just north of Durango for great rock climbing opportunities close to town.

3 CORTEZ RECREATION AREA



This comparatively low elevation (6,000-7,000 feet) area offers a unique combination of terrain, scenery, and climate that allows for nearly year-round recreation close to towns and is surrounded by panoramic backdrops. The relatively small blocks of public land are particularly well-suited to nonmotorized trail use with opportunities for short motorized trails. This area also contains the only “open” (to cross country travel) motorized areas in the field office, providing rock crawling, OHV play and skill-building. Mountain biking trail systems are currently the greatest draw, highlighted by Phil’s World just east of Cortez, which is one of the BLM’s 20 premier mountain biking destinations.

4 CANYONS OF THE ANCIENTS VISITOR CENTER & MUSEUM



The Visitor Center & Museum serves as headquarters for Canyons of the Ancients National Monument and is southwest Colorado’s premier archaeological museum of Native cultures in the Four Corners region. The museum curates artifacts from several units in the area and hosts special exhibits, films and programs regularly.

UNCOMPAHGRE FIELD OFFICE

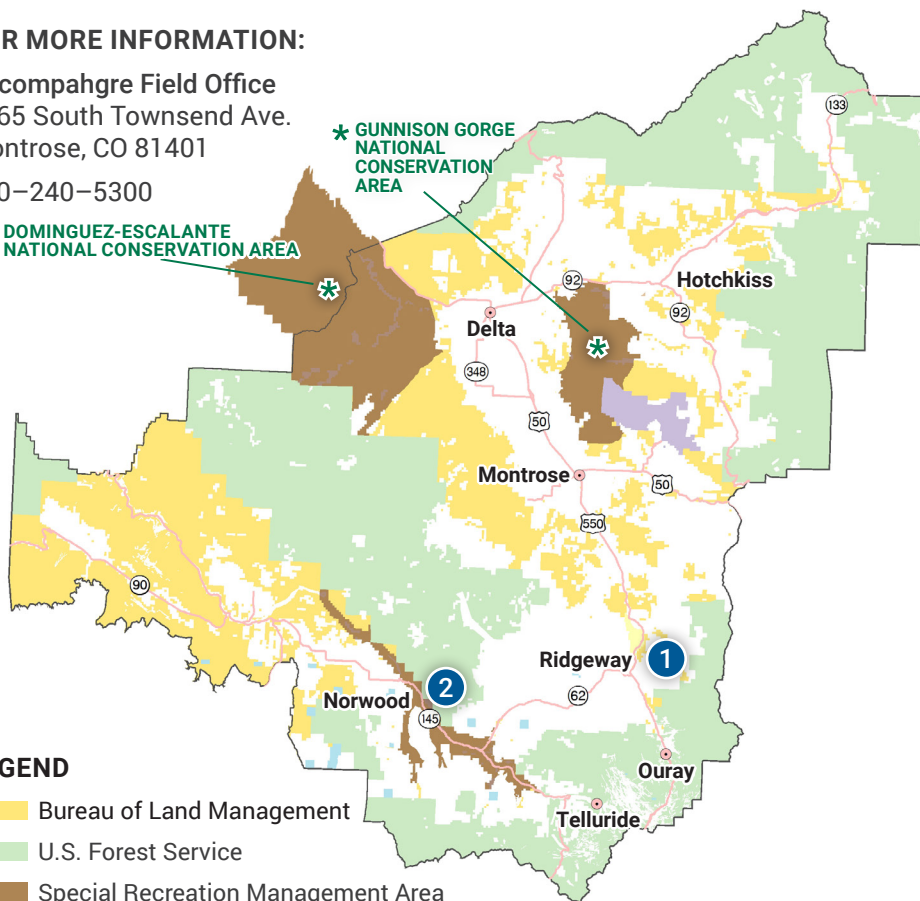


FOR MORE INFORMATION:

Uncompahgre Field Office
2465 South Townsend Ave.
Montrose, CO 81401
970-240-5300

* DOMINGUEZ-ESCALANTE
NATIONAL CONSERVATION AREA

* GUNNISON GORGE
NATIONAL CONSERVATION
AREA



LEGEND

- Bureau of Land Management
- U.S. Forest Service
- Special Recreation Management Area
- National Park Service
- Other Public Lands





Kayaker on the Gunnison River at Dominguez-Escalante National Conservation Area
BLM Photo by Bob Wick

1 SHAVANO VALLEY TRAILHEAD



Located west of Montrose, this vast landscape offers miles of trails for motorized and nonmotorized use. Visitors can enjoy newly built mountain biking trails at Electric Hills or explore Rim Rocker trails, featuring over 160 miles of stunning landscapes from Montrose to Moab.

2 RIDGWAY AREA TRAILS



Located at the base of the San Juan Mountains, these multiuse trails are perfect for the avid mountain biker. While most popular for mountain biking, these trails are also open to hikers and equestrians. Conveniently close to Montrose, Ouray and Ridgway, the trails are easily accessible for a quick day trip for both community members and visitors.

3 SAN MIGUEL RIVER RECREATION AREA



This diverse ecosystem is home to a wide variety of rare riparian plant communities. Ample brown and rainbow trout populations make for excellent fishing opportunities. Along the river, whitewater rapids ranging between Class II and IV allow boaters to enjoy a variety of river trips. Visitors can also travel along the Unaweep–Tabeguache Scenic and Historic Byway. Four campgrounds found alongside the river are available for overnight stays.



Mountain biker on the Shavano Valley Trailhead
BLM Photo by Caroline Kilbane

GRAND JUNCTION FIELD OFFICE

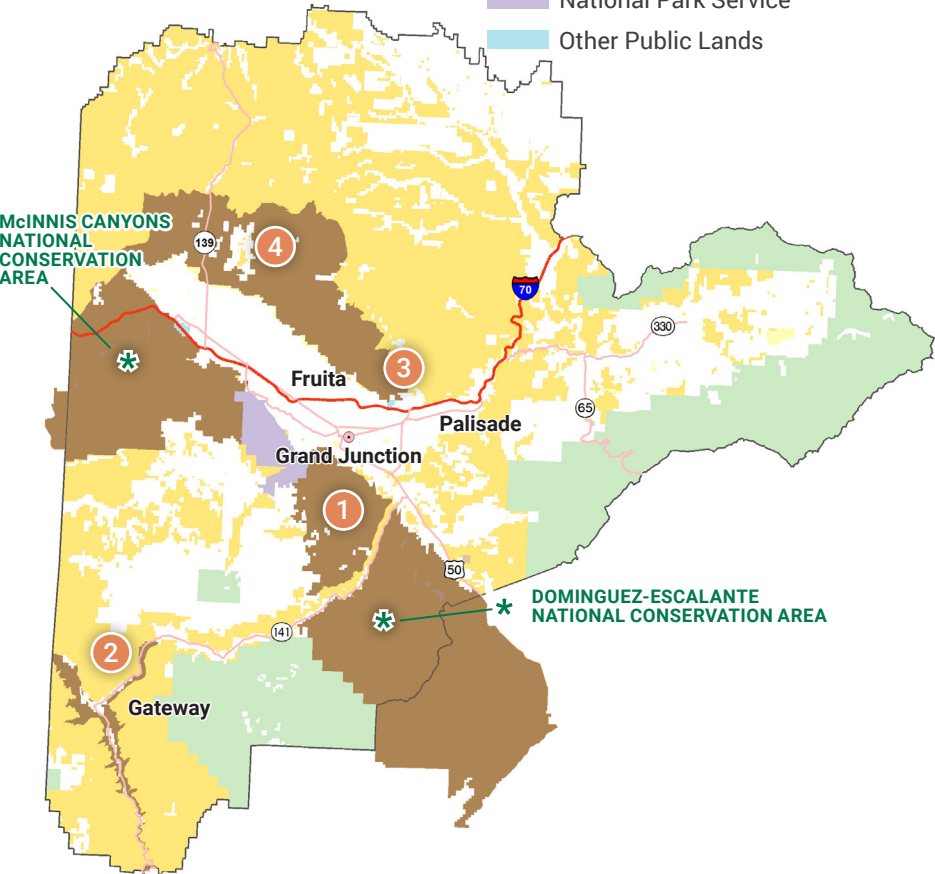


FOR MORE INFORMATION:

Grand Junction Field Office
2815 H Road
Grand Junction, CO 81506
970-244-3000

LEGEND

- Bureau of Land Management
- Special Recreation Management Area
- U.S. Forest Service
- National Park Service
- Other Public Lands



Floating on the Colorado River in McInnis Canyons NCA
BLM Photo by Bob Wick



Uncompahgre Wilderness
BLM Photo by Bob Wick

1 BANGS AREA



Located near Grand Junction, this fascinating desert terrain of slick rock canyons and plateaus offers an extensive system of trails that are ideal for morning, midday and evening outings. The area includes intensively visited mountain bike and OHV playgrounds, as well as primitive backcountry areas, appealing to locals and visitors alike. Ladder Canyon and Rough Canyon are particularly popular with hikers and rock climbers. Visitors will enjoy hiking and mountain biking on the Lunch Loops Trail System, while other routes extending from the Bangs Canyon Trailhead are great for horseback riding, OHV use and 4-wheeling.

2 GATEWAY AREA



Spectacular red-walled canyons line the Dolores River's winding course through the heart of the Gateway area. A scenic and historic byway and two Wilderness Study Areas found here brim with breathtaking scenery, cultural history and fascinating geology. Miles of all-terrain vehicle and OHV routes also provide spectacular riding through historic uranium mining country. The area also offers opportunities for canyoneering and hiking. Commercially-outfitted services for climbing, horseback riding and other diverse activities; a world class adventure center; and a museum are also nearby.

3 GRAND VALLEY AREA



The Grand Valley is made up of imposing badlands topography on the western toe of Mt. Garfield. Just opposite I-70 from the City of Grand Junction, the area offers an "open" OHV playground. The limitations of this challenging terrain are those of rider and machine. Readily accessible to visitors and locals, this rugged terrain offers challenging and exciting riding as well as opportunities for onlookers to enjoy the sport.

4 NORTH DESERT AREA



The North Desert Area boasts an extensive trail system that has become a popular mountain biking destination. Dozens of designated mountain bike and OHV trails spread for miles throughout this huge riding area at the base of the Book Cliffs. In addition, there is a small OHV "open" area, offering an ideal warm-up or family play area. The area also offers a developed campground comprised of over 100 campsites. The user fees from these sites help maintain the campground and support trail maintenance and associated riding opportunities.

COLORADO RIVER VALLEY FIELD OFFICE

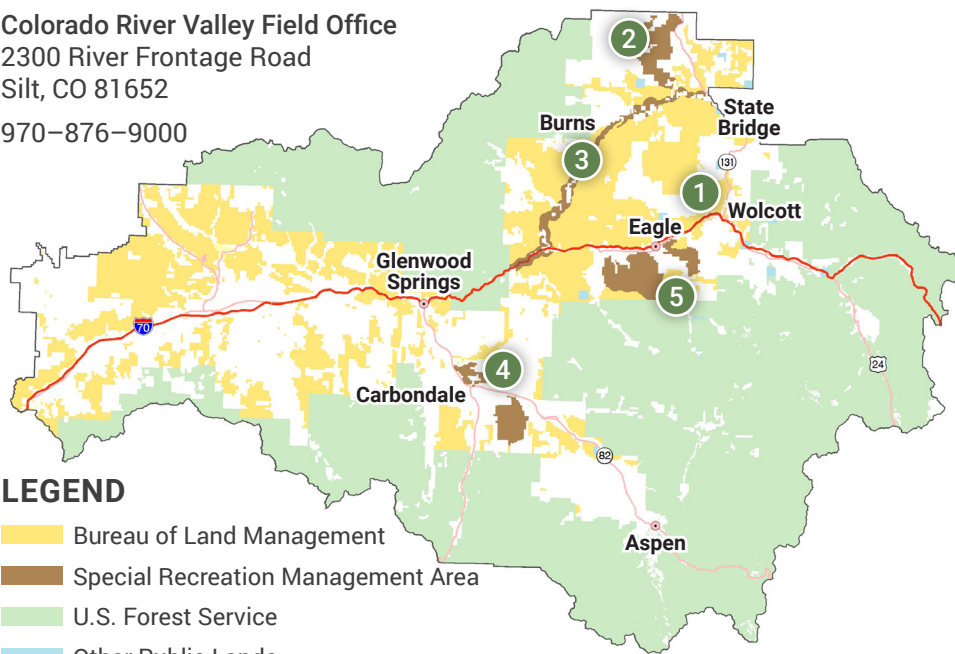


• Denver

COLORADO

FOR MORE INFORMATION:

Colorado River Valley Field Office
2300 River Frontage Road
Silt, CO 81652
970-876-9000



LEGEND

- Bureau of Land Management
- Special Recreation Management Area
- U.S. Forest Service
- Other Public Lands



Dirt biking at Bocco Mountain

BLM Photo by Bob Wick



Mountain Biking at The Crown

BLM Photo by Bob Wick



Tubing on the Upper Colorado River
BLM Photo by Bob Wick

1 BOCCO MOUNTAIN



Bocco Mountain is a small motorcycle riding area north of I-70 at Wolcott. This riding area offers 20 miles of difficult motorcycle trails through rugged terrain and scattered piñon-juniper woodlands. It is popular with experienced riders in the spring before the snow melts in the high country.

2 KING MOUNTAIN



Enjoy the area's wildlife and scenery while hiking, horseback riding, hunting and camping in the 12,000-acre King Mountain recreation area off Highway 131 in Routt County. The area offers uncrowded recreation outside of the fall big game hunting seasons.

3 UPPER COLORADO RIVER, STATE BRIDGE TO DOTSERO LANDING



This scenic section of the Colorado River has fewer rapids than the stretch above State Bridge. The stretch between State Bridge and Horse Creek is prized for trout fishing. The lower sections are popular for floatboating, canoeing, standup paddleboarding and tubing. Numerous developed recreation sites provide river access between State Bridge and Dotsero Landing, enabling visitors to plan trips to fit their own abilities and interests.

4 THE CROWN



The Crown offers Carbondale residents and visitors a wide variety of mountain biking opportunities close to town. The Crown is about 4 miles southeast of Carbondale off Prince Creek Road. From mid-April through October, The Crown offers more moderate biking trails. The Crown offers two developed campgrounds with a total of 12 campsites.

4 RED HILL



Red Hill offers a wide variety of mountain biking and hiking opportunities close to town. Red Hill lies just north of Carbondale. From mid-April through October, Red Hill offers steeper and more difficult hiking and biking trails on Red Hill.

5 HARDSCRABBLE – EAST EAGLE



From mid-April through October, mountain bikers can enjoy single-track trails on BLM lands that connect with the Town of Eagle's trails. The western side of the recreation area near the Town of Gypsum offers OHV trails for motorcycles, ATVs and 4x4s. These diverse trail systems help locals and visitors maintain active, healthy, outdoor-oriented lifestyles. Visitors can access the area at Spring Creek just south of the Eagle County Airport.

KREMMLING FIELD OFFICE



FOR MORE INFORMATION:

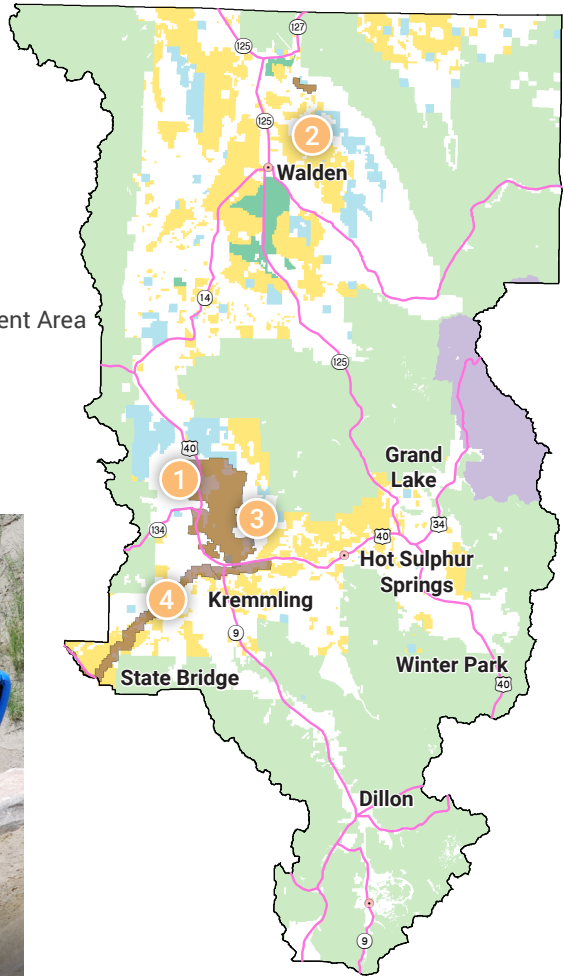
Kremmling Field Office
2103 E. Park Avenue
Kremmling, CO 80459
970-724-3000

LEGEND

-  Bureau of Land Management
-  Special Recreation Management Area
-  U.S. Forest Service
-  National Park Service
-  National Wildlife Refuge
-  Other Public Lands



Wolford Mountain Recreation Area
BLM Photo by Vanessa Lacayo



Rafting and Fishing on the Upper Colorado River
BLM Photo by Bob Wick

1 WOLFORD MOUNTAIN RECREATION AREA



Wolford Mountain Recreation Area, located immediately north of Kremmling and bordering Wolford Mountain Reservoir, is a destination for a wide variety of recreation activities. This multiple-use area offers motorized and non-motorized trails, as well as a small, open, off-highway area that allows beginner to advanced 4-wheeler, ATV and motorcycle riders to practice their skills. Wolford Mountain's variety of recreation opportunities makes it a favorite among local residents.

2 NORTH SAND HILLS RECREATION AREA



Colorado's only open sand dune area for OHV recreation is situated at the eastern edge of North Park at the toe of the Medicine Bow Mountain Range. North Sand Hills provides unique riding opportunities for dirt bike, ATV, side-by-side and sand rail riders. Due to the area's extreme landscape, it is important to be prepared and alert when riding OHVs. The area also has connecting trails into the State Forest State Park and adjacent U.S. Forest Service lands, all while providing the scenic backdrop of the Park and Medicine Bow Mountain Ranges. A developed campground and other dispersed camping sites are available within the area.

3 UPPER COLORADO RIVER RECREATION AREA



The Upper Colorado River is a unique and beautiful recreation area, known for its diverse water features, wildlife and cultural landscapes accessible along the Colorado River Headwaters Scenic Byway. Notable segments of the Upper Colorado River include Reeder Creek to Blue River, Gore Canyon and Pumphouse to State Bridge. The most popular of these segments, from Pumphouse to State Bridge, offers camping facilities at both Pumphouse and Radium. The area combines placid boating waters through pastoral heritage ranchlands with more challenging Class II and III rapids in the intervening canyons. Extreme Class IV and Class V whitewater rafting and kayaking are available in Gore Canyon (not recommended without a commercial outfitter). The Pumphouse Recreation Site also offers the Gore Canyon Whitewater Park with large boulders placed on the bed of the river to create waves and whitewater for kayakers, stand-up paddle boarders and other whitewater enthusiasts.

4 STRAWBERRY RECREATION AREA



The Strawberry area includes approximately 8 miles of single-track, non-motorized trails that are collectively known as the Phases. These trails are interconnected with 10.5 miles of roads, creating a stacked-loop network that offers a variety of bicycle riding options. Bicycles and Motorized vehicles are restricted to designated roads and trails only. Watch for signs indicating allowable uses on specific routes. This area also provides fishing access to the Fraser River, which offers trout fishing.

5 HEADWATERS EXTENSIVE RECREATION MANAGEMENT AREA



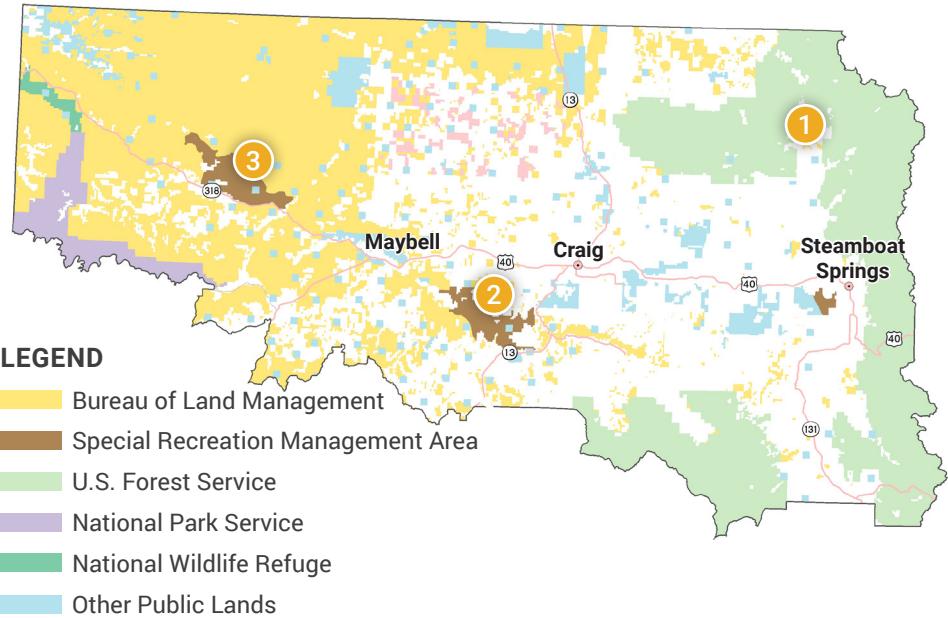
The Headwaters Recreation Management Area is located between Hot Sulphur Springs and Granby. The trails within the Headwaters is restricted to foot and horse travel only. Bicycles and motorized vehicles are prohibited in order to provide for a primitive, quiet recreation opportunity. The trail network includes 28 miles of interconnecting trails over and across ridges and creeks. Trails traverse sagebrush steppe, aspen groves and forest, with views overlooking the Colorado River valley.

LITTLE SNAKE FIELD OFFICE



FOR MORE INFORMATION:

Little Snake Field Office
455 Emerson Street
Craig, CO 81625
970-826-5000



Sand Wash Basin Herd Management Area
BLM Photo



Emerald Mountain
BLM Photo

1 EMERALD MOUNTAIN



This day-use only recreation area located near Steamboat Springs provides opportunities for hiking, horseback riding and mountain biking in the summer as well as moderately challenging Nordic and back-country skiing in the winter. The Howelson Hill Ski Area, which gave Steamboat Springs the name “Ski Town USA,” adjoins Emerald Mountain and provides additional trails. The trails within Emerald Mountain provide views of Mt. Werner, Sleeping Giant Mountain and other scenic icons of the Yampa Valley while meandering through Gambel oak, aspens, sage and pine forests. A seasonal closure is in effect December 1-June 30 to protect wintering and calving elk within the area south of Ridge Trail.

2 LITTLE YAMPA CANYON



Within the Little Yampa Canyon Recreation Area, the Yampa River meanders through Duffy Mountain and Iles Mountain, providing open canoeing and flatwater rafting opportunities. The river is home to various species of bass, pike, trout and even catfish, making it a hotspot for fishermen. Bald and golden eagles inhabit the riparian areas, attracting wildlife viewers, while mammals such as elk, mule deer and pronghorn make this area a destination for hunters. Undeveloped camping is available along the river, with the town of Craig only 35 minutes away. The Yampa Valley Trail and the Vista Trail also provide scenic overlooks for hikers, mountain bikers and equestrians. The Little Yampa Canyon is included in the 65 Million Years in 65 Miles Interpretive Drive.

3 SAND WASH BASIN



The Sand Wash Basin is located northwest of Maybell, Colorado. The Basin is a large, scenic expanse of high desert country that is a destination for OHV enthusiasts. The area is also home to the world-renowned wild horse herd that can be viewed throughout most of the year.



Yampa River at Little Yampa Canyon
BLM Photo

WHITE RIVER FIELD OFFICE

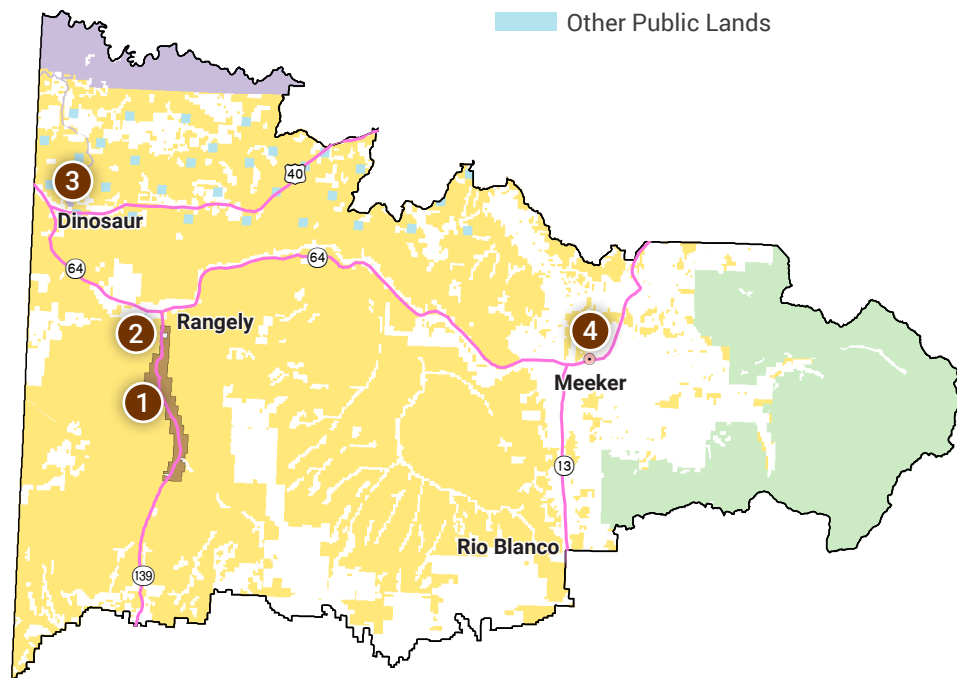


FOR MORE INFORMATION:

White River Field Office
220 East Market Street
Meeker, CO 81641
970-878-3800

LEGEND

- Bureau of Land Management
- Special Recreation Management Area
- U.S. Forest Service
- National Park Service
- Other Public Lands





Canyon Pintado
BLM Photo

1 CANYON PINTADO



Spanish for “Painted Canyon,” this archaeological heritage attraction contains hundreds of Native American Fremont and Ute pictographs (rock paintings). Interpretive panels explaining this fragile rock art are featured at seven locations throughout the area. Canyon Pintado is one of several heritage tourism attractions along the Dinosaur Diamond Scenic and Historic Byway. Visitors can take advantage of opportunities to camp and hike in the canyon while reaping the educational benefits of the area’s history.

2 WHITE RIVER



White River is readily accessible at County Road 2 just west of the Town of Rangely. Scenic canyon vistas and wildlife can be seen from the river as it winds its way through the lower river canyon. Flows above 1,500 cfs require intermediate to advanced canoeing experience. This 47-mile stretch of flat water, which includes putting in at the Big Trujillo site and taking out at the Bonanza site in Utah, can be extended into a 100-mile trip to the confluence with the Green River in Utah.

3 BULL CANYON WILDERNESS STUDY AREA



Bull Canyon is more characteristic of the arid canyon scenery found in the Colorado Plateau than the surrounding Rocky Mountain Forest Province. Geographically, the area is cut by deep ridges and canyons of sandstone eroded by rain and snowmelt runoff. Colorful cliffs, a maze of canyons and unique rock formations are a result of deep erosion. The canyon can be easily viewed from the Plug Hat Butte Picnic Area and the Escalante Interpretive Overlook.

4 MEEKER TRAIL SYSTEM



This approximately 10-mile trail system is designed for hiking and mountain biking only and provides opportunities for all skill levels and abilities. The area includes views of the White River Valley from the top of China Wall Trail as well as a challenging downhill flow course for mountain bikers. The trail system connects Sanderson Hills Park, Jensen Memorial Park, Ute Park and BLM lands. Trailhead access and parking is available at the Sanderson Hills Park and at the end of Hill Street in Ute Park.



Bull Canyon Wilderness Study Area
BLM Photo by Bob Wick

Partners & Volunteers

Creative and cooperative management is vital to the health and well-being of our country's lands. BLM Colorado benefits from an active and vibrant network of partners and volunteers.

Contact your local BLM field office if you're interested in partnering with the BLM's recreation program.



The following are just a few of our recreation partners who help make Colorado such a great place to visit:

Bicycle Colorado

www.bicyclecolorado.org

Colorado Canyons Association

www.coloradocanyonsassociation.org

Colorado Mountain Club

www.cmc.org

Colorado Off-Highway Vehicle Coalition

www.cohvco.org

Colorado Outfitters Association

www.coloradooutfitters.org

Colorado Parks and Wildlife

www.cpw.state.co.us

Colorado River Outfitters Association

www.croa.org

Colorado Youth Corps Association:

www.cyca.org

Conservation Lands Foundation:

www.conservationlands.org

International Mountain Bicycle Association:

www.imba.com

Stay The Trail:

www.staythetrail.org

USDA Forest Service, Region 2:

www.fs.usda.gov/r2

Volunteers for Outdoor Colorado:

www.voc.org

Wildland Restoration Volunteers:

www.wlrv.org



The Bureau of Land Management's mission is to sustain the health, diversity and productivity of public lands for the use and enjoyment of present and future generations.

