



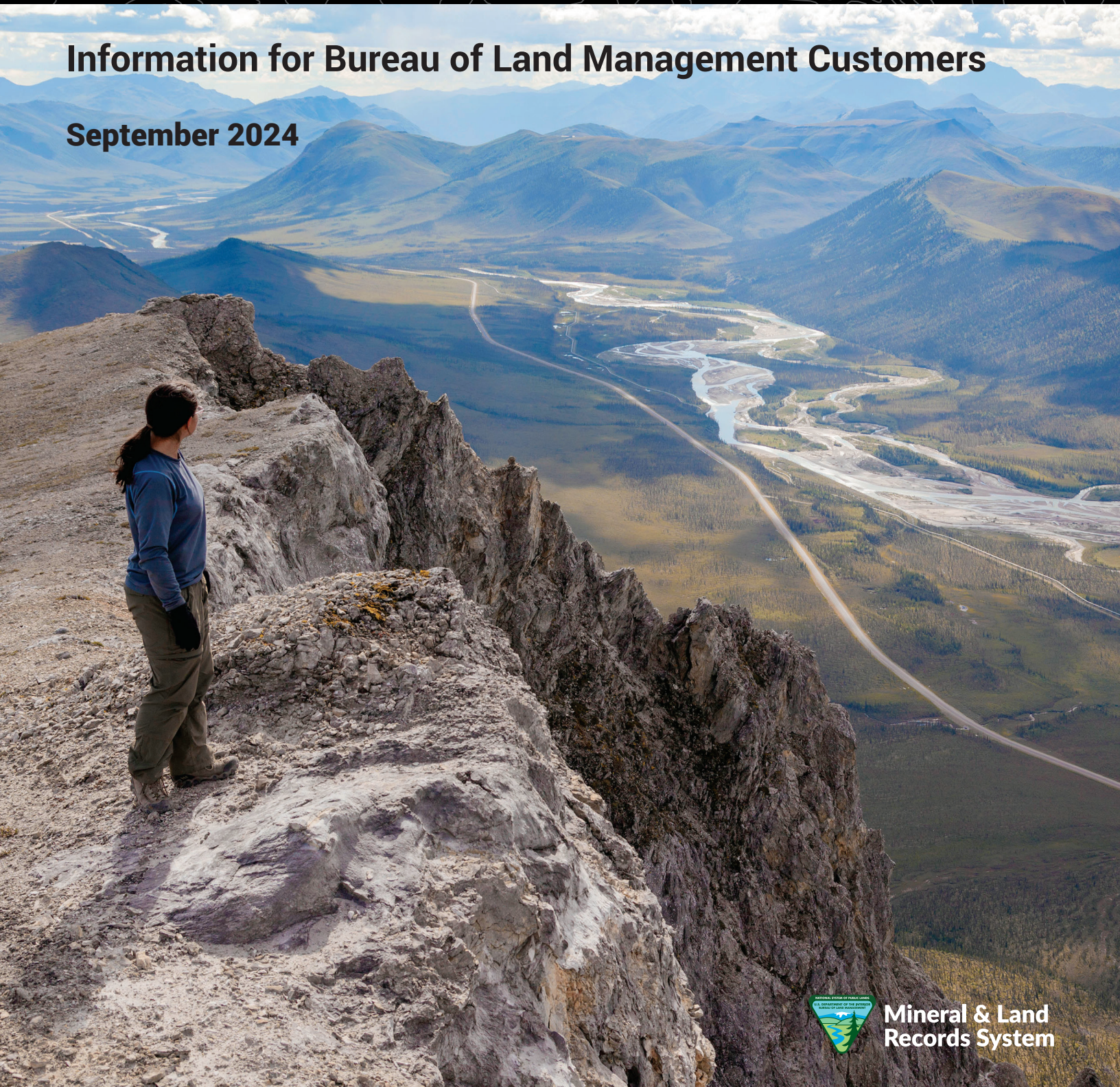
U.S. Department of the Interior  
Bureau of Land Management

# Mineral & Land Records System

Release 4.0: Remaining Alaska Cases Moving Into MLRS

Information for Bureau of Land Management Customers

September 2024



Mineral & Land  
Records System





**Mineral & Land  
Records System**

## Meet MLRS

The BLM's Mineral & Land Records System (MLRS) is a modern, geospatially enabled online platform that helps the BLM and customers efficiently and securely manage land and mineral records and transactions. MLRS replaces several aging information technology systems and platforms to provide a single, user-friendly, nationally integrated land and mineral records system for BLM.

## What MLRS Does

- Provides access to land and mineral records online from the convenience of your computer or mobile device.
- Delivers land records and other information securely.
- Helps you manage mining claims, rights-of-way, permits, withdrawals, sales, exchanges, grants (i.e., state land, wind and solar development, and U.S. Forest Service easements), acquisitions, and agreements in one place.
- Processes payment transactions, including new claim fees, maintenance fees, assessment fees, notice of intent to hold fees, transfer of interest fees, and amendment fees. Some restrictions apply.
- Enables you to keep contact information current.
- Allows businesses to manage employee access.
- Provides educational materials and answers to frequently asked questions in the Help Center: <https://mlrs.blm.gov/s/help-center>.

## About BLM Alaska

The Bureau of Land Management (BLM) in Alaska manages more surface and subsurface acres than any other state. This includes approximately 70 million surface acres and 220 million subsurface acres (federal mineral estate) of public lands managed under a multiple-use, sustained yield mission for the use and enjoyment of present and future generations.

Explore MLRS at <https://mlrs.blm.gov>.



**Mineral & Land  
Records System**

HOME

RESEARCH

HELP CENTER

Search...



Log in

## Mineral & Land Records System

Department of the Interior | Bureau of Land Management

### Research on our Real-time Map

Discover mineral and land record information, use search capabilities, and interact with geospatial data layers.

Get Started

### File and Manage your Mineral and Land Cases

Record new cases, track status, and manage all your existing cases online.

Log in or Register

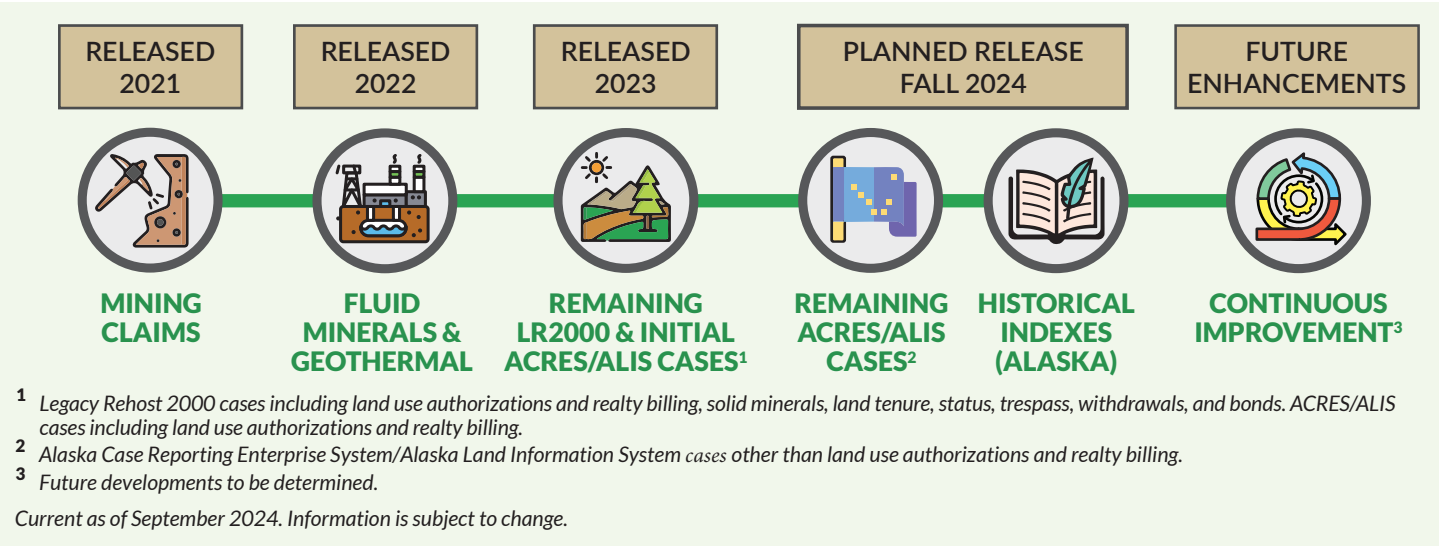




# MLRS Timeline

MLRS has replaced or consolidated several legacy systems and currently handles cases (for the Lower 48) on mining claims; fluid minerals and geothermal energy; land use authorizations such as rights-of-ways, leases, permits, easements, and billing (including Alaska); solid minerals; land tenure; trespass; status;

and more. The final major MLRS release, tentatively slated for fall 2024, will include all remaining ACRES/ALIS cases (ACRES is the Alaska Case Reporting Enterprise System; ALIS is the Alaska Land Information System) and contain BLM Alaska Historical Index records.



## Features Coming with Release 4.0

The latest updates, tentatively slated for fall 2024, will allow MLRS users in Alaska to:

- File a new mining claim.
- Pay fees, including new claim fees, maintenance fees, assessment work fees, notice of intent to hold fees, transfer of interest fees, and amendment fees.
- Access billing information, such as due date and payment status.
- Access a custom view of your rights-of-way, permits, sales, exchanges, and acquisitions without the need to run a report.
- Use the GIS-based research map to perform real-time research and view existing mining claims, reference land use authorizations, land status, Public Land Survey System land descriptions, and additional base maps to better orient yourself.
- View Historical Index records for BLM Alaska by visiting the BLM's General Lands Office Records website at <https://glorerecords.blm.gov/>.



# New Serial Number Format

With the development of MLRS, the BLM transformed the serial number format nationwide.

- Each existing and new case is given an autogenerated serial number from MLRS, standardizing the serial numbering system for the future of the BLM.
- Current serial numbers and cases will not be lost. Historic and active cases will be migrated into MLRS from ACRES/ALIS.
  - With MLRS, you will be able to use either the legacy ACRES/ALIS serial number or the new MLRS-generated serial number to find cases.
  - Customers will have the ability to manage their cases with both serial numbers.
  - New BLM Alaska cases created after MLRS Release 4.0 goes live will only have one serial number (except for Alaska land use authorizations created after June 2023, which already have only one serial number).

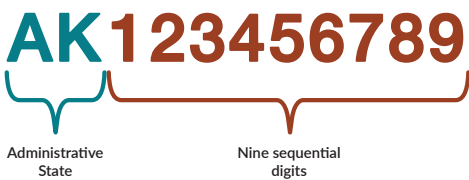
## New Format Example

The example shown here is for a case in the geographic and administrative state of Alaska.



There are two exceptions to the above serial number format:

**Mining Claims:** Mining claim serial numbers omit the geographic state.



**Bonds:** Bond cases are similar to mining claims but have an additional “B” for bond.









## Frequently Asked Questions

To read more FAQs, visit <https://blm.gov/mlrs> or the [MLRS Help Center FAQ page](#).

 Question	 Answer
What will MLRS do for me?	MLRS makes it easier to manage your cases. With a business or personal account, you will have a custom view of your mining claims, rights-of-way, leases, permits, easements, sales, exchanges, acquisitions, agreements, or other cases, without the need to run a report.
How can I conduct research on my areas of interest in MLRS?	The MLRS Research Map supports land and mineral information research using GIS tools. Once logged in, you can bookmark areas of interest, find public data, and search for locations on the map by name or legal land description.
Can I file applications in MLRS?	Yes, in MLRS you can apply for land use authorizations and mining claims. Applicants can scan and upload their signed application and supporting documentation with the initiated request, but the signed application must still be mailed into the appropriate BLM office.
Who would benefit from creating an MLRS account?	Any individual, business, or government agency representative who wishes to conduct business with the BLM, or already conducts business with the BLM, in areas supported by MLRS. No matter how large or small the project may be, an MLRS account will allow you to manage your cases with ease from almost anywhere with an internet connection.
Will MLRS and the BLM track serial numbers on my current case filings?	Your existing ACRES/ALIS serial numbers will not become obsolete within MLRS but will now be known as the legacy serial number. MLRS generates a new standardized serial number for all cases, including all existing cases migrated from ACRES/ALIS into MLRS. Both the legacy and the new MLRS serial numbers are searchable within the system. Newer cases created in MLRS will only carry a new MLRS serial number.
What if I need help after MLRS launches?	You can access knowledge articles and FAQs on the MLRS Community website. You may also submit at public help desk ticket at <a href="https://phd.blm.gov">https://phd.blm.gov</a> . Make sure to select MLRS for the Application field in your ticket.

## Thanks for Reading!

- Learn more about MLRS by visiting the landing page at <https://www.blm.gov/mlrs>.
- Visit the MLRS Reports page at <https://reports.blm.gov/reports/mlrs> for your reporting needs.
- If you are experiencing system issues or have questions, submit a public help desk ticket at <https://phd.blm.gov>.
- We'd love to hear from you! Please send any feedback to our MLRS inbox at [blm\\_mlrs@blm.gov](mailto:blm_mlrs@blm.gov).