

SNPLMA Round 20
Multi-Species Habitat Conservation Plan
Nomination Addendum – Comments and Questions
Updated as of March 2024

Nomination: Tab 01

Entity: Clark County

Project: Boulder City Conservation Easement Translocation Plan Update

Section A – Background

“This project would provide for updated population density estimates for the North Unit and new population density estimates for the South Unit to be incorporated into the BCCE translocation plan....The project will consist of several in-the-field activities to include line distance sampling, tortoise health assessments, and G₀ (gee sub-zero) telemetry surveys. No ground disturbance will take place.”

Comment: The nomination under Section F “Project Timeframe” identifies training for field crews in years two and three as a deliverable/task. This section will need to provide a brief description of the proposed “training” and identify approximate number of field crew teams (e.g., teams of two biologists) and duration (e.g., hours, days) anticipated based on the number of proposed transects. Also clarify who would provide the training?

Section D – Project Deliverables

1. **Primary Deliverables:**

a. Complete desert tortoise line distance sampling surveys or drone surveys across the BCCE (~2,400 kilometers of transects).

Comment:

- 1) Project deliverables must be measurable. The SNPLMA Program Manager will work with the nominating entity to update the nomination with quantitative information for this deliverable and verify whether it would be appropriate to also identify the transect distance in feet (can 1 kilometer also be identified as ~3280 feet?).
- 2) Potential use of drones to implement this project should be moved from “primary” to “anticipated” deliverable.
 - a. The nomination reads *“The DCP is currently evaluating the use of drones to conduct desert tortoise surveys. If this proves an effective means of collecting data on tortoise populations, the Line Distance Sampling component of this project **may be completed with the assistance of drones...**”*
 - b. NRS 493.109 states that all unmanned aircraft system (UAS) operators must receive authorization from the Airport Manager prior to flight within 5 miles of Boulder City Airport.
 - c. When flying within Boulder City limits, UAS pilots shall follow all federal (e.g., FAA, 14 CFR, Chapter 1, Subpart F, Part 107), state, and local regulations, and exercise extreme caution—and may require a permit if planning to operate a UAS from city property.
 - d. If drone use is desired--County would coordinate with the SNPLMA Program Manager for prior approval of this deliverable and to provide documentation that clearly identifies whether or not a drone use permit is required.

b. Complete health assessments on tortoises encountered during surveys.

Comment: Project deliverables must be measurable. How would the SNPLMA Division measure the County’s progress on this deliverable? The SNPLMA Program Manager will work

with the nominating entity to update the nomination with quantitative information for this deliverable.

c. Complete focal telemetry surveys to allow for G_0 adjustments to the line distance sampling data.

Comment: Project deliverables must be measurable. How would the SNPLMA Division measure the County's progress on this deliverable? The SNPLMA Program Manager will work with the nominating entity to update the nomination with quantitative information for this deliverable.

d. Analyze line distance and telemetry data to develop density estimates for both the north and south sections of the BCCE.

Comment: Project deliverables must be measurable. How would the SNPLMA Division measure the County's progress on this deliverable? The SNPLMA Program Manager will work with the nominating entity to update the nomination with quantitative information for this deliverable.

e. Develop a revised translocation plan for the BCCE.

No Comment.

2. Anticipated Deliverables:

a. There are no anticipated deliverables for this project.

Comment: Refer above to comment item Section D, 1.a.3 (need to move potential "drone" usage as an anticipated deliverable). The SNPLMA Program Manager will work with the nomination entity to update the nomination.

Section C – Purpose Statement

Clark County will assess desert tortoise populations in the BCCE to determine whether additional population augmentation activities are warranted, and to develop a revised translocation plan that can be used as a guide for continued translocation of tortoises removed from construction sites to the BCCE.

Comment: Nominations must contain a specific statement of the purpose of the project that briefly describes in narrative format the who, what, where, and why. The nomination purpose statement has been edited from the original to read as follows: *Clark County will assess desert tortoise populations within the 87,268-acre Boulder City Conservation Easement (BCCE) to determine whether additional population augmentation activities are warranted, and to develop a revised translocation plan that can be used as a guide for continued translocation of tortoises removed from construction sites to the BCCE. The BCCE is owned by the City of Boulder City and managed by Clark County to protect habitat for the threatened desert tortoise and other species covered by the Clark County MSHCP.*

Section I – Project Budget (and Excel Budget Detail)

Tab 1 "Personnel" and Tab 2 "Fringe Benefits"

"Clark County Desert Conservation Program staff will monitor the project and report financial and progress reports to the BLM/SNPLMA Division. These costs will be covered by the recipient organization and not reimbursed through the SNPLMA project funds."

Comment: Budget is too vague. There are no allocated costs proposed for "Personnel" (salaries and wages) for this project. This is an important cost area that demonstrates involvement of the Recipient. While SNPLMA does not require cost share—if SNPLMA funds are not allocated for these costs the recipient will need to outline costs to be covered by other non-federal resources (e.g., cost share). Cooperative agreement projects require substantial involvement by the recipient. The federal award will need to clearly identify staff time (hours/months), salary/wage and total estimated cost over the 5-year period of performance in the budget to show the recipient's involvement in the project and how the project will be managed to successful completion including fiscal staff overseeing fiscal and contracting responsibilities. County will need to provide a signed contributed funds commitment letter for any voluntary cost share, if any.

Tab 6 “Contractual” costs and justification narrative

Per County nomination narrative and Budget Detail (Excel spreadsheet):

Description of Contract	Unit	UOM	Unit Cost	SNPLMA Funds
Surveys/telemetry/heath assessments	1	survey	\$ 480,000	\$ 480,000
Data analysis	1	report	\$ 80,000	\$ 80,000
Translocation Plan production	1	plan	\$ 90,000	\$ 90,000
TOTAL (SNPLMA):				\$ 650,000

- 1) **“...this project will be \$650,000...includes \$480,000 for surveys and health assessments ...professional service contracts are all done by lump sum fee and not by time and materials...we do not have actual costs for training/telemetry/distance sampling separately.**
- 2) **Estimates were derived based on previous similar contracts** with an average \$1,900 per transect for 200 transects...increased by 5% a year for two years...for inflation.
- 3) **Health assessments are expected to cost \$60,000, ...A contract to analyze this data to determine current densities and determine how many tortoises can be translocated to each area is based on previous density estimate contracts.**
- 4) **Final \$90,000 would go toward...translocation plan.** This estimate is similar to the cost of the connectivity management plan based on the same level of inflation.
- 5) **County follows NRS 332 for professional services contracts selection.** Projects under \$100,000 must obtain 1 informal quote, contracts between \$100,000 and \$500,000 require minimum of two informal quotes, and contracts over \$500,000 require a formal RFP process.
- 6) **All budgeted costs are estimates based on previous contracts** with similar objectives that could be extrapolated to this project.”

Comments:

- If County used data from previous similar projects, then extrapolate that data into the budget detail justification to show “how” the County derived at the estimated costs. Fixed “lump sum” amounts require measurable goals and objectives—provide project line-item cost and unit pricing to show how a fixed amount is derived based on actual costs.
- There also appears to be a potential “overage” in the budget line-item cost calculation as shown below. The below breakdown comes from the County’s nomination Budget Detail - total budget for contract costs \$580,000 does match the County’s calculation of \$650,000 for contract costs.

Cost Type	Unit	UOM	Unit Cost	Subtotal	% Increase for Inflation	Cost of Inflation	Yrs	Cost of Inflation Over 2 yrs	SNPLMA Fund
Surveys transects	200	EA	\$1,900	\$380,000	5%	\$19,000	2	\$38,000	\$ 418,000
Health Assessments				\$ 60,000					\$ 60,000
Translocation Plan				\$ 90,000					\$ 90,000
Total EST Costs (per County justification)									\$ 568,000
County's EST Contract Cost Total									\$ 650,000
Overage Difference									\$ 82,000

Section L - Maps

Location Map – is not adequate as the township, range and section “lines” are not labeled and unable to determine location of the proposed project. The SNPLMA Program Manager will work with the nominating entity to update the nomination maps.

**Southern Nevada Public Land Management Act
Multi-Species Habitat Conservation Plan
Round 20**

Clark County



MOJAVEMAX.COM



desert conservation
PROGRAM

**Boulder City Conservation Easement
Translocation Plan Update**

Amount Requested: \$650,000

A. BACKGROUND INFORMATION

The Mojave population of desert tortoise was listed as Threatened on April 2, 1990, based on population declines resulting from illegal collection, vandalism, release of captive tortoises, spread of disease, agricultural development, urban growth, landfills, livestock grazing, road construction, and irresponsible off-road travel. In response to the listing, Clark County and local cities along with the Nevada Department of Transportation founded the Clark County Desert Conservation Program (DCP) and developed the Clark County Multiple Species Habitat Conservation Plan (MSHCP) to provide mitigation for 78 species, including the desert tortoise, while allowing for continued development in Clark County.

A recovery plan for the desert tortoise was developed and published by the U.S. Fish and Wildlife Service (USFWS) in 1994 and revised in 2011. The goal of the recovery plan is the recovery and delisting of the desert tortoise, but because desert tortoises require 13 to 20 years to reach sexual maturity, have low reproductive rates during a long period of reproductive potential, and juveniles experience relatively high mortality, recovery of the species is very difficult. Even moderate downward fluctuations in adult survival rates can result in rapid population declines. So, one of the recovery actions listed in the 2011 *Revised Recovery Plan for the Mojave Population for the Desert Tortoise* is implementation of translocations in target areas to augment populations using a scientifically rigorous, research-based approach (Recovery Action 3.4).

Translocation is the human-mediated movement of living organisms from one area, with release in another area. Depleted populations that fall below the minimum viable density threshold as described in the recovery plan cause a significant risk to the sustainability of the desert tortoise across its range and can severely limit the connectivity of populations across the landscape. Increasing the total number of individuals within target populations will allow for better connectivity and facilitation of gene flow between populations.

As part of its obligations in implementing the Clark County MSHCP, the DCP is required to take in tortoises that are removed from construction sites and translocate them to approved translocation sites. The Boulder City Conservation Easement (BCCE) currently serves as the approved translocation site for this purpose. In 2014, the USFWS and Clark County completed a translocation plan for the BCCE that allowed up to 115 adult tortoises being held at the Desert Tortoise Conservation Center to be translocated to the North Unit of the BCCE. The translocation plan was updated in 2017 to incorporate information on the number of tortoises released to date. At that time, 38 tortoises were translocated to the North Unit of the BCCE, leaving 43 releases still available for County use. Between 2018 and 2022, Clark County translocated a total of 29 adult tortoises, which leaves 14 translocation spaces for adult tortoises remaining under the plan. Furthermore, the BCCE Translocation Plan expired at the end of 2022, thus there is a need to evaluate the plan and update it for continued translocation as appropriate.

With few translocation spaces remaining under the current plan, and a continuing need for translocation of tortoises out of harm's way, the County proposes to determine the suitability of the BCCE North Unit to accept additional tortoises above the limits identified in the 2014 and 2017 plan and to determine the suitability of the South Unit for translocation. The BCCE occurs in the only Tortoise Conservation Area (TCA) in Clark County where population densities are estimated to be in decline and additional tortoises may be necessary to aid in stabilizing the

population. TCA's were established as part of the USFWS recovery plan as a way of dividing the geographic range of the desert tortoise up into more manageable and biologically relevant units. The Eldorado Valley TCA occurs generally between the City of Boulder City and Searchlight Nevada and is bordered by the Colorado River to the east and the McCullough Range to the west. With tortoise population numbers still considered to be in decline across the Eldorado Valley, the translocation of tortoises beyond numbers identified in the 2014 and 2017 plans may be warranted.

This project would provide for updated population density estimates for the North Unit and new population density estimates for the South Unit to be incorporated into the BCCE translocation plan. During population density estimate surveys (i.e., line distance sampling) health assessment data will be collected to determine the overall health status of the population. Current population density estimates, and health data are necessary to evaluate the site and to determine its suitability for population augmentation. Population augmentation (or reinforcement) involves translocation of an organism into an existing population that results in increasing population size, increasing genetic diversity, or increasing the representation of specific demographic groups or stages. Results of the population density estimate surveys will be incorporated into the revised translocation plan for the BCCE. The project will consist of several in-the-field activities to include line distance sampling, tortoise health assessments, and G_0 (gee sub-zero) telemetry surveys. No ground disturbance will take place.

Line Distance Sampling

Line distance sampling surveys is a significant component of the project. Line distance sampling protocols are established by the USFWS and have been the standard method of assessing desert tortoise population density estimates for over 20 years. These protocols are described in the USFWS *Mojave Desert Tortoise Monitoring Handbook*. The standard protocol for line distance sampling consists of teams of two biologists walking across a site along pre-fixed routes. All tortoises encountered during the transect surveys are documented and basic data such as location, temperature, median carapace length, and existing/new tag number are recorded.

The DCP is currently evaluating the use of drones to conduct desert tortoise surveys. If this proves an effective means of collecting data on tortoise populations, the Line Distance Sampling component of this project may be completed with the assistance of drones, which should reduce the overall cost of survey efforts. All protocols will be approved for use in the BCCE Translocation Plan Update by the USFWS Desert Tortoise Recovery Program.

Health Assessments

Health assessment data are collected on all tortoises encountered, as environmental conditions allow (e.g., temperatures do not exceed safe tortoise handling guidelines). Health assessment protocols include conducting a physical inspection of the tortoise to look for any signs of abnormal behavior and inspection of the nares, eyes, beak, oral cavity, skin, muscle mass, and shell to look for signs of disease. The health assessment evaluator will also examine the tortoise to assign a body condition score, which is based on an evaluation of muscle mass and fat deposits in relation to skeletal features. A small blood sample will be collected to determine presence of disease, including upper respiratory tract disease. All health assessments will be completed in accordance with procedures described by the USFWS in *Health Assessment*

Procedures for the Mojave Desert Tortoise (Gopherus agassizii): A Handbook Pertinent to Translocation.

G₀ Telemetry Surveys

Simultaneous with line distance surveys, a small subset of tortoises will be equipped with a transmitter and tracked with a radiotelemetry device. This data is used to develop a correction factor for the density estimates that accounts for the likelihood of tortoises being above ground and readily detectable by surveyors. This correction factor is referred to as the G₀ adjustment. These protocols are further described in the USFWS *Mojave Desert Tortoise Monitoring Handbook*, revised 2022 (https://www.fws.gov/sites/default/files/documents/2022_Monitoring_Handbook_0.pdf).

Translocation Plan Update

Line distance survey data and G₀ telemetry data will be used to evaluate the current population density of desert tortoises within the BCCE. USFWS current guidelines prescribe that desert tortoise populations with a density of less than 3.8 tortoises per square kilometer may be suitable for augmentation efforts (i.e. translocation). Health assessment data will provide an overview of the overall health of the resident population, to ensure tortoises will not be translocated to an area where disease is prevalent. The translocation plan update will be prepared in accordance with USFWS guidelines. USFWS is the regulatory agency with ultimate approval authority for a desert tortoise translocation plan; all activities will be conducted under the guidance of the USFWS Desert Tortoise Recovery Program.

Permits

All field activities and handling of desert tortoises are covered under the Clark County MSHCP Biological Opinion 1-5-00-FW-575, Permit TE034927-0. All field personnel handling desert tortoises and conducting health assessments will be approved for this work by USFWS and Nevada Department of Wildlife.

About the Boulder City Conservation Easement (BCCE)

All activities described in this nomination will take place within the BCCE, which is owned by the City of Boulder City. The BCCE, generally located in the upper Eldorado Valley, was established in 1995 by an agreement between Clark County and the City of Boulder City. Managed by the Clark County DCP, the BCCE was established to protect habitat for desert tortoises and other species covered by the Clark County MSHCP. The BCCE conserves 87,268 acres of desert tortoise habitat and serves as mitigation for impacts to desert tortoises resulting from private-land development activities within the County.

The BCCE is within the city limits of Boulder City and is located approximately 2 miles south and west of the residential area of Boulder City. The BCCE begins approximately 2 miles south of the intersection between U.S. Highway 95 and Interstate 11 and extends for approximately 22 miles along U.S. Highway 95. The BCCE is split by U.S. Highway 95 into a North Section, consisting of 39,114 acres, and a South Section consisting of 48,154 acres. Excluded from the South Section is the Solar Energy Zone, an area of 4,207 acres designated by the City for energy development. Bureau of Land Management (BLM), National Park Service (NPS) and private lands are also adjacent to the BCCE. The BCCE also contains several BLM-administered utility corridors and rights-of-way that traverse the landscape.

Project Management

The DCP utilizes Case360 for project management. All contractual agreements must specify the milestones and deliverables to accomplish the goals of the contract. Tracking of a contractor's performance is accomplished through completion of milestones and submittal of deliverables as outlined in the agreement. All contractors working for the DCP are required to submit a quarterly status report to detail project progress made during the reporting period and to highlight any potential issues or special considerations. Contractors are also required to submit an annual report (for multi-year agreements) and a biennium progress report. In addition, the DCP project manager will meet a minimum of quarterly with the contractor to discuss work completed and to discuss any issues or protocol adjustments that may be warranted.

1. Describe relationship to prior approved phases or related SNPLMA projects and anticipated future phases:

This project does not relate to any prior or currently planned future SNPLMA projects.

2. Acknowledgement of stand-alone project and no guarantee of funding for future phases:

The DCP acknowledges that this is a stand-alone project and that the funding of this project does not influence any future phases that may be associated with this project.

B. SNPLMA STRATEGIC PLAN VALUES

The MSHCP category will implement the goals and objectives of the MSHCP and the SNPLMA Strategic Plan by sustaining the quality of the outdoor environment by conserving, preserving, and restoring natural and cultural resources; while focusing on the three SNPLMA core values: connectivity, sustainability, and community. This project will promote the three values as summarized below:

1. Sustainability:

This project promotes sustainability of the threatened desert tortoise by helping to augment depleted populations. During the first iteration of the translocation plan completed in 2014 it was deemed that this population was severely under replacement level (i.e., mortality rates are higher than birth and recruitment). Populations under replacement levels are not sustainable long term. Due to drought and increasing rates of predation by coyotes and ravens, it is thought that the population density numbers have not increased as desired from the previous augmentations and additional augmentation activities are warranted. Increasing population size overall will help to raise the vital rates for the desert tortoise in this area allowing them to have a self-sustaining population into the future.

2. Connectivity:

Depleted populations can result in a decrease in connectivity. This project seeks to determine if the population is still depleted and set up measures to ensure it doesn't remain depleted in the future. This will aid in maintaining connectivity of the desert tortoise by allowing the animal to move and connect with other adjacent populations.

3. Community:

This project will allow for tortoises to be translocated to the BCCE, further augmenting the

desert tortoise community in this area. The depleted and continuing decline of the tortoise population across the Eldorado Valley is a concern and this project would help alleviate that concern by strengthening the animal community in the area. It will also allow increase the likelihood that people who recreate in this area will be able to see wild desert tortoises in their natural habitat, strengthening their connection to nature.

C. PURPOSE STATEMENT

Clark County will conduct line distance sampling and assessments of desert tortoise populations within the 87,268-acre Boulder City Conservation Easement (BCCE) to determine whether additional population augmentation activities are warranted, and to develop a revised translocation plan that can be used as a guide for continued translocation of tortoises removed from construction sites to the BCCE. The BCCE is owned by the City of Boulder City and managed by Clark County to protect habitat for the threatened desert tortoise and other species covered by the Clark County MSHCP.

D. PROJECT DELIVERABLES

1. Primary Deliverables:
 - a. Complete desert tortoise line distance sampling surveys or drone surveys across the BCCE (~2,400 kilometers of transects).
 - b. Complete health assessments on tortoises encountered during surveys.
 - c. Complete focal telemetry surveys to allow for G_0 adjustments to the line distance sampling data.
 - d. Analyze line distance and telemetry data to develop density estimates for both the north and south sections of the BCCE.
 - e. Develop a revised translocation plan for the BCCE.
2. Anticipated Deliverables: *(prior approval from the SNPLMA Program Manager is required)*
 - a. There are no anticipated deliverables for this project.
3. Standard Deliverables:
 - a. Ongoing administration of financial instrument.
 - b. Pre-award planning, scoping, and budgeting activities, and award of contract(s).
 - c. Issuance of project completion notice from DCP to BLM/SNPLMA.
 - d. Issuance of final payment made to Contractor(s).
 - e. Final report to BLM/SNPLMA.
 - f. Notice of project completion to BLM/SNPLMA for site visit scheduling.

E. PROJECT LOCATION

Project site address: Boulder City Conservation Easement

Legal Description: Mount Diablo Meridian: Clark County, Nevada:

All of T25S R62E except section 6; all of T24S R64E excepts sections 1,12,13,24,25, & 36; T23E R64E Sections 31-35; T 23S R63E sections 25, 26, 35 & 36; T24S R63E Sections 1, 2, 3 NE, 3SE, 10NE, 10SSE, 11-14, 15NE, 15SE, 22-27, 28SE, 28SW, 29SE, 29SW, 30SE, 30SW, 31-33, 34NE, 34NW, 35NE, 35NW, 36; T25S R64E Sections 1-6; T25S R 63E Sections 4NW, 4SW, 5, 6, 9NW, 9SW, 16NW, 16SW, 16SE, 17-21, 22NW, 22SW, 27NW, 27SW, 28-33, 34SW, & 34NW; T26S R63E Sections 4-9, 16-18, T26S, R62E Sections 1, 2, 11-14; T24S R62E Sections 22, 23, 24NW, 24SW, 25SW, 25SE, 26, 27, 34-36.

Parcel Number(s):

20700002011, 21400001022, 21200001003, 20800002013, 20800099001, 18926399001, 18926499001, 18926299001, 20700002012, 20700002022, 20700099003, 21300001013, 21300002003, 22700099001, 20700099001, 1300099003, 21300099002, 18935099001, 20700099002, 21200099001, 21300002011, 20700002013, 20700002027, 21300001020, 20700001007, 20700002025, 18633000001, 21300001023, 18634000002, 21200001002, 20700002028, 22700001009, 21300002019, 22700001002, 22700001016, 20700001014, 21300001012, 21300001022, 20700002023, 21300002013, 21300002021, 21300002005, 21300001003, 22700001017, 20700001021, 21300002018, 22700001003, 22700001010, 18836000001, 20700002029, 21200001001, 18926601001, 20700002014, 20700002019, 18731000001, 18732000001, 20700002005, 18733000001, 18734000001, 18735000001, 18634000001, 18633000002, 21300002010, 18935000002, 21300002004, 20800001011, 20800001005, 20800001017, 20800002014, 21400002002, 20800002005, 21400002008, 22600001011, 21400001016, 20800002011, 21300002012, 21400002014, 21400002006, 21400002012, 21300002020, 21400002018, 22600001005, 20800002018, 21400001011, 21400002005, 21400002011, 21400002016, 21400002017, 21400001010, 21400001018, 21400002004, 21400002010, 21300002009, 22600001012, 21400001009, 21400001017, 21400002003, 21400002009, 22700001018, 21400002015, 20800002007, 20800002001, 20800001013, 20800001007, 20800002008, 20800002002, 20800002009, 20800001014, 20800002003, 20800002010, 20800001008, 20800001015, 20800002004, 20800001009, 20800001016, 20800001010, 22600001018, 21400001008, 20600002004, 21300002017, 22600001017, 18925000001, 20600002010, 18632000001, 22600001006, 18631000001, 20800002017, 20800002016, 20600002016, 20700001015, 20800002015, 20600002011, 20600002005, 22700001011, 20600002017, 22700001008, 22700001015, 20700002016, 20600002012, 20700001022, 20600002018, 22700001001, 20700002006, 22700001004, 20700002007, 20800001004, 20700002015, 20800001003, 20700001023, 20800001002, 18936000001, 21200001004, 20800001001, 20700001016, 21400001021, 21400001002, 21400001004, 21400001003, 20700001008, 21200001005, 21200001006, 21200001007, 20700001009, 21200001008, 21400001007, 21400002013, 21400001015, 21400002001, 21400002007, 20700002048, 20700002046, 21300001035, 21300001038, 21300002002, 21400001034, 21300001047, 21300002001, 20600002006, 21400001006, 21300001042, 21400001036, 21400001037, 20700002054

Current Land Use and Zoning: Government Open Space & Highway Frontage

Latitude and Longitude: North section: 35.837490, -114.867914
South Section: 35.735503, -114.999285

Congressional District(s): NV District 1

F. PROJECT TIMEFRAME

Project will be completed within 5 years from execution date of the SNPLMA federal award. Below is a schedule by each year of the federal award that generally outlines major milestones and nomination deliverables planned for project implementation and completion:

Year 1: SNPLMA Cooperative Agreement and Contract Development

- Request to initiate, develop project workplan; pre-work site visit with SNPLMA PM.
- Respond to the Notice of Intent to Award by federal financial assistance application submittal.
- Coordinate with BLM on any required environmental review and Section 106 compliance.
- Request and receive SNPLMA notice to proceed and federal award (cooperative agreement).
- Develop scope of work for line distance survey, G₀ telemetry, and health assessment contract; solicit proposals.

Year 2: Performing Surveys, Telemetry, and Health Assessments

- Execute contract for line distance surveys, G₀ telemetry, and health assessments.
- Train contracted field crews.
- Conduct line distance surveys, G₀ telemetry, and health assessments.

Year 3: Performing Data Analysis

- Execute Year 2 of contract for line distance surveys, G₀ telemetry, and health assessments.
- Train contracted field crews.
- Conduct surveys, G₀ telemetry, and health assessments.
- Develop scope of work for data analysis; solicit proposals; execute data analysis contract.
- Analyze data; determine existing population density and overall population health status.

Year 4: Draft Translocation Plan

- Develop scope of work for Translocation Plan; solicit proposals; execute Translocation Plan contract.
- Prepare Draft Translocation Plan.
- Agency review of Draft Translocation Plan.

Year 5: Complete Translocation Plan and Project Closeout

- Prepare Final Translocation Plan.
- Reconcile project file, financial expenditures, and unliquidated obligations.
- Conduct final site inspection with SNPLMA program manager.
- Prepare closeout request package and update SMART.
- Submit final financial report (SF-425) and performance narrative via Grant Solutions.
- Submit closeout request package (min. 60 days prior to period of performance end date)

G. LEVEL OF PROJECT READINESS FOR IMPLEMENTATION

Is this a shovel-ready project (explain if “Yes”): Yes -or- No

This is a survey and planning project that will guide future translocation activities. No ground disturbance will take place.

Have you applied, received, or is there the opportunity to obtain funding from another source for this project? Please list the additional funding opportunities received or applied for and indicate whether it is federal or nonfederal funding.

There are no plans to apply for or receive additional funding for this project.

H. FUTURE OPERATION AND MAINTENANCE

This is a survey and planning project that will guide future translocation activities; there are no expected future operations or maintenance for this project.

I. PROJECT BUDGET

The SNPLMA amount requested for this project is \$650,000.

Summarized below are the estimated project costs. Enclosed at the end of this nomination is the “Project Budget Detail & Narrative” spreadsheet that provides the budget summary and detail breakdown of the estimated project costs by the SF-424A budget cost categories, as applicable.

Budget Cost Categories (SF424A)	SNPLMA Funds	Cost Share Funds
1) Personnel	\$ -	\$ -
2) Fringe Benefits	\$ -	\$ -
3) Travel	\$ -	\$ -
4) Equipment	\$ -	\$ -
5) Supplies	\$ -	\$ -
6) Contractual	\$ 650,000	\$ -
7) Construction	\$ -	\$ -
8) Other (e.g., training)	\$ -	\$ -
Total Direct Costs (sum of 1 through 8)	\$ 650,000	\$ -
9) Indirect Charges	\$ -	\$ -
TOTAL BUDGET (Direct & Indirect Costs)	\$ 650,000	\$ -

Cost-Benefit Analysis

The cost for this project is estimated to be \$650,000, which includes \$480,000 for line distance surveys, G₀ telemetry, and health assessments on both the North Unit and South Unit of the BCCE. County professional service contracts are lump sum fee agreements; time and materials will not be used to carry out any component of this work. Therefore, we do not have actual costs for training, telemetry, and distance sampling separately. Contract proposals are evaluated based on contractor experience and qualifications and price. Estimates were derived based on previous similar contracts with an average of \$1,900 per transect for 200 transects. Five percent per year was added to this cost to account for inflation.

Health assessments are expected to cost \$60,000, but that can vary based on the number of tortoises that are found during surveys. A contract to analyze this data to determine the current population density and to determine how many tortoises can be translocated to each unit is based on similar density estimate contracts that the County has completed or are in progress. The final \$90,000 would go toward development and writing of the translocation plan. This is similar to the cost of the connectivity management plan, based on the same level of inflation.

It is also possible that new methods using drones may show enough efficacy to be implementable by the time funding is available to carry out this project, which if implemented would reduce the cost of the project overall and allow the work to be completed under budget. The DCP will be conducting drone trials for survey work over the next few years.

Partnership and/or Contributed Funds: No partnerships or contributed funds for this project.

J. KEY CONTACTS

Key personnel that will be assisting with the management and oversight of the project.:

Program Director: Kimberley Jenkins, Principal Environmental Specialist
 Email: Kimberley.jenkins@clarkcountynv.gov
 Phone Number: 702-455-5529

Authorized Officer: Esther Criss, Senior Management Analyst
 Email: Esther.Criss@ClarkCountyNV.gov
 Phone number: 702-455-3554

Project Manager: Scott Cambrin, Senior Biologist
 Email: scott.cambrin@clarkcountynv.gov
 Phone Number: 702-455-3859

Budget Officer: Daniel Hoover, Senior Management Analyst
 Email: DHoover@clarkcountynv.gov
 Phone Number: 702-455-3637

Support Staff: Sharon McLeish, Administrative Specialist
 Email: Sharon.McLeish@ClarkCountyNV.gov
 Phone number: 702-455-3536

K. ORDERS AND PRIORITIES

A. Executive Orders (EO):

1. ***EO No. 13855: Promoting Active Management of America's Forests, Range Lands to Improve Conditions and Reduce Wildfire Risk***
 Not Applicable
2. ***EO No. 14005: Ensuring the Future is Made in All of America by All of America's Workers***

All work for this project will be performed by American companies. We also make all companies aware that materials purchased for this project should be sourced from other American businesses.

3. ***EO No. 14063: Use of Project Labor Agreements for Federal Construction Projects (applicable to projects estimated at \$35 million or more)***

Not Applicable

4. ***EO No. 14072: Strengthening the Nation's Forests, Communities, and Local Economies***

This project will lead to a stronger biological community in the Eldorado Valley by helping the desert tortoise and all the animals that rely on it for retreat sites to persist and eventually thrive in the future. The project will also put money into the local economy as much of the work will be completed by local companies.

5. ***EO No. 14096: Revitalizing Our Nation's Commitment to Environmental Justice for All***

Not Applicable

B. Secretarial Orders

1. ***SO No. 3347: Conservation Stewardship and Outdoor Recreation.***

Not Applicable

2. ***SO No. 3356: Hunting, Fishing, Recreational Shooting, and Wildlife Conservation Opportunities and Coordination with States, Tribes and Territories.***

This project is important to wildlife conservation in the desert southwest. This project will help to provide direct support to a depleted population with hopes of getting it to self-sustaining in the future.

3. ***SO No. 3362: Improving Habitat Quality in Western Big-Game Winter Range and Migration Corridors.***

Not Applicable

4. ***SO No. 3366: Increasing Recreational Opportunities on Lands and Waters Managed by the U.S. Department of the Interior***

Not Applicable

5. ***SO No. 3370: Conservation Stewardship and Increasing Public Access to Urban National Wildlife Refuges.***

Not Applicable

6. ***SO No. 3372: Reducing Wildfire Risks on Department of the Interior Land Through Active Management.***

Not Applicable

7. ***SO No. 3373: Evaluating Public Access in Bureau of Land Management Public Land Disposal and Exchanges (focus is on Sec. 4.b.(3) Potential increased public***

recreational access to existing public lands resulting from the proposed land acquired through an exchange (acquisition).

Not Applicable

8. SO No. 3376: Increasing Recreational Opportunities through the use of Electric Bikes.

Not Applicable

C. Department of the Interior Priorities:

1. *Identifying steps to accelerate responsible development of renewable energy on public lands and waters.* *We are investing in climate research and environmental innovation to incentivize the rapid deployment of clean energy solutions, while reviewing existing programs to restore balance on America's public lands and waters to benefit current and future generations.*

Not Applicable

2. *Strengthening the government-to-government relationship with sovereign Tribal nations.* *We understand that tribal sovereignty and self-governance, as well as honoring the federal trust responsibility to Tribal Nations, must be the cornerstones of federal Indian policy.*

Not Applicable

3. *Making investments to support the Administration's goal of creating millions of family-supporting and union jobs.* *This includes establishing a new Climate Conservation Corps Initiative to put a new generation of Americans to work conserving and restoring public lands and waters, increasing reforestation, increasing carbon sequestration in the agricultural sector, protecting biodiversity, improving access to recreation, and addressing the changing climate.*

Not Applicable

4. *Working to conserve at least 30% each of our lands and waters by the year 2030.* *We will work to protect biodiversity, slow extinction rates, and help leverage natural climate solutions by conserving 30% of America's lands and waters by 2030. This relies on support for local, state, private, and tribally led conservation and restoration efforts that are underway across America.*

This project is working to help maintain biodiversity in the desert near Las Vegas. Continued declines in tortoise populations could lead to extirpation in certain areas. Also, many species rely on the desert tortoise burrows for retreat from harsh temperatures and loss of those refugia may result in a decline of many other species in this community.

5. *Centering equity and environmental justice.* *The impacts of the multiple crises in the United States are not evenly distributed in our society. Communities of color, low-income families, and rural and indigenous communities have long suffered disproportionate and cumulative harm from air pollution, water pollution, and toxic sites. At every step of the way, Interior will engage diverse stakeholders across the*

country, as well as conduct formal consultation with Tribes in recognition of the U.S. government's trust responsibilities.

Not Applicable

D. USDA Forest Service Priorities:

1. *Controlling the COVID-19 pandemic*

Not Applicable/Work does not occur on Forest Service Lands

2. *Providing economic relief*

Not Applicable/Work does not occur on Forest Service Lands

3. *Tackling climate change*

Not Applicable/Work does not occur on Forest Service Lands

4. *Advancing racial equity*

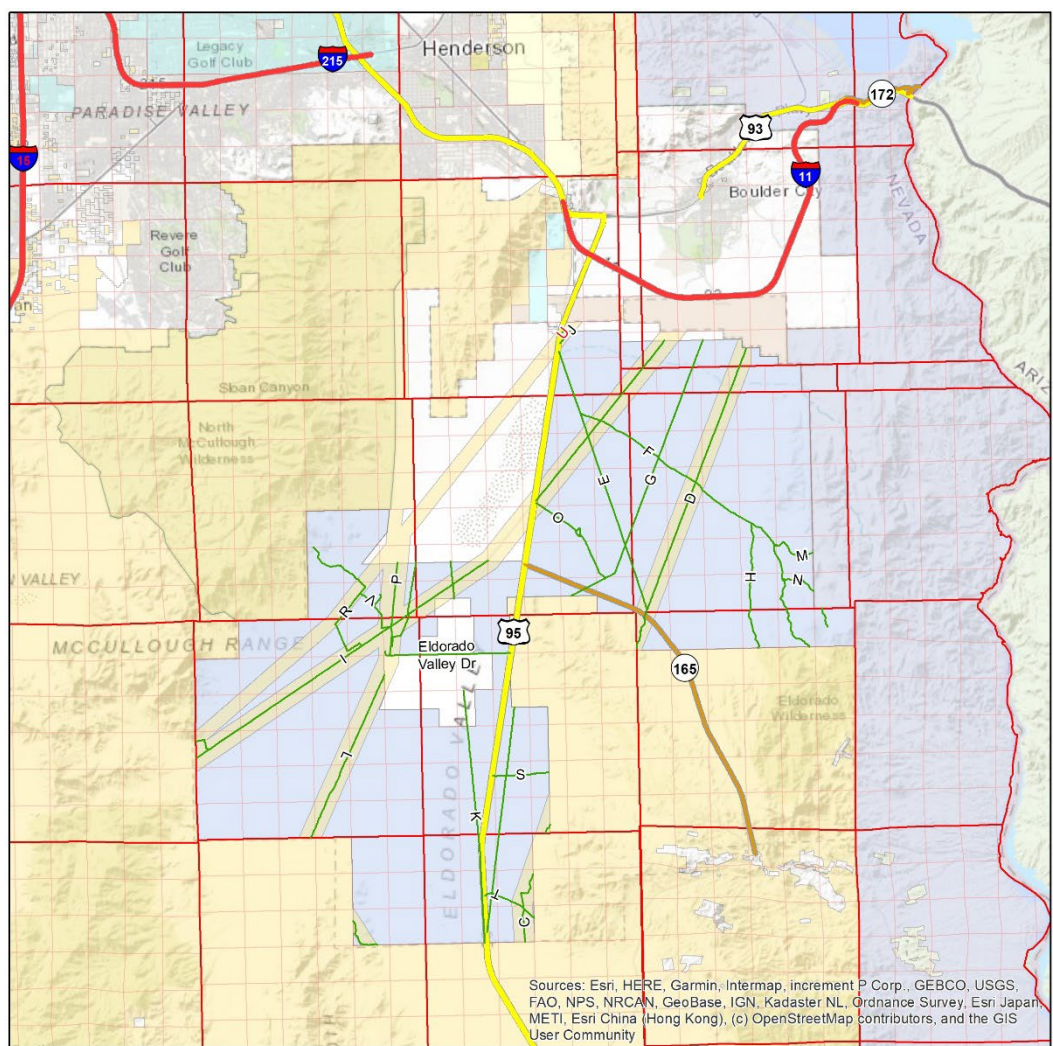
Not Applicable/Work does not occur on Forest Service Lands

5. *Improving our workforce and work environment*

Not Applicable/Work does not occur on Forest Service Lands

L. MAPS

Location Map



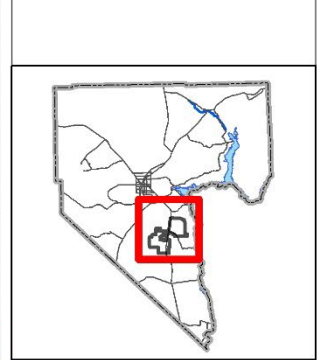
Clark County
Desert Conservation Program
November 1, 2023

SNPLMA Round 20 Proposal
BCCE Translocation
Plan Update

Overview Land Status Map

Legend

- BCCE
- BCCE Open Roads
- Township & Range
- Section
- Bureau of Land Management
- Bureau of Reclamation
- Department of Energy
- National Park Service
- Nevada State
- Local Government
- Private

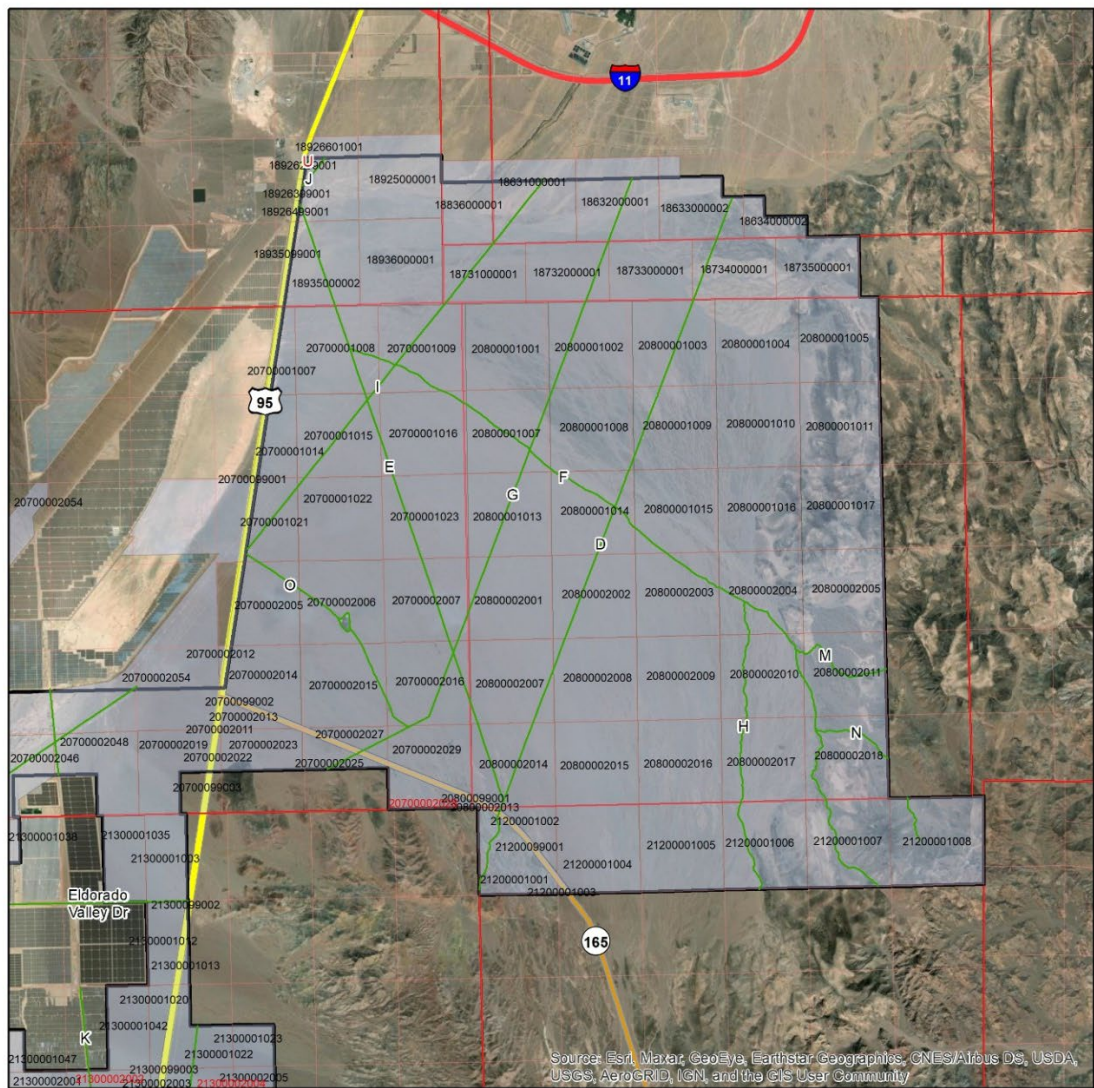


0 1.5 3 6
Miles

Map Author: Scott Cambrin

Sources: Esri, HERE, Garmin, Intermap, increment P Corp., GEBCO, USGS, FAO, NPS, NRCAN, GeoBase, IGN, Kadaster NL, Ordnance Survey, Esri Japan, METI, Esri China (Hong Kong), (c) OpenStreetMap contributors, and the GIS User Community

Assessor Parcels Map – North Section



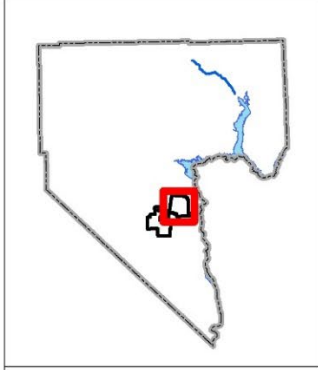
Clark County
Desert Conservation Program
November 1, 2023

SNPLMA Round 20 Proposal
BCCE Translocation
Plan Update

North Section APN Map

Legend

- BCCE Open Roads
- BCCE
- Parcels_BCCE
- Township & Range
- Section

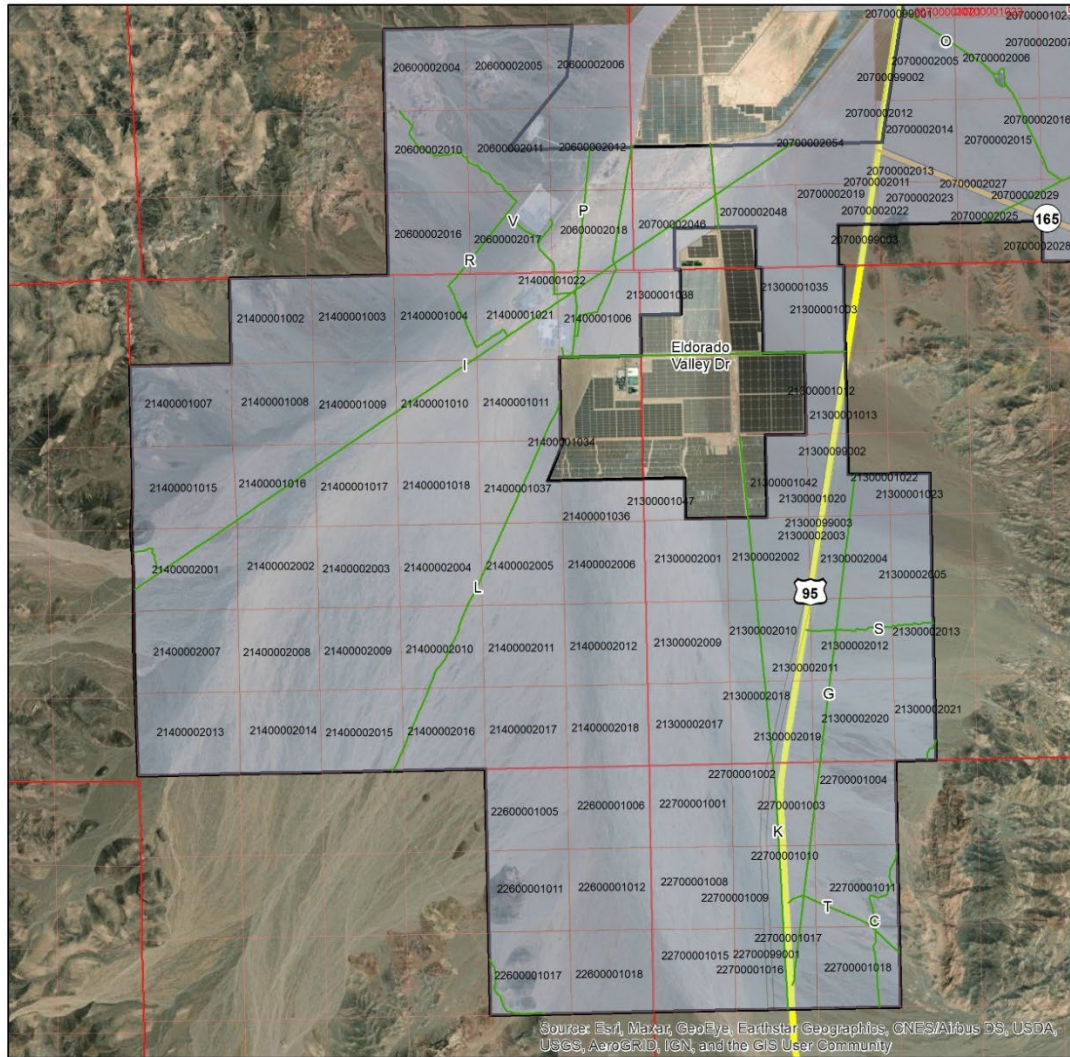


North arrow pointing up.

Scale bar: 0, 0.75, 1.5, 3 Miles.

Map Author: Scott Cambrin

Assessor Parcels Map – South Section



Clark County
Desert Conservation Program
November 1, 2023
SNPLMA Round 20 Proposal
BCCE Translocation
Plan Update
South Section APN Map

Legend

- BCCE Open Roads
- BCCE
- Parcels_BCCE
- Township & Range
- Section
- STATE HIGHWAY
- US HIGHWAY



N
0 0.75 1.5 3
Miles
Map Author: Scott Cambrin

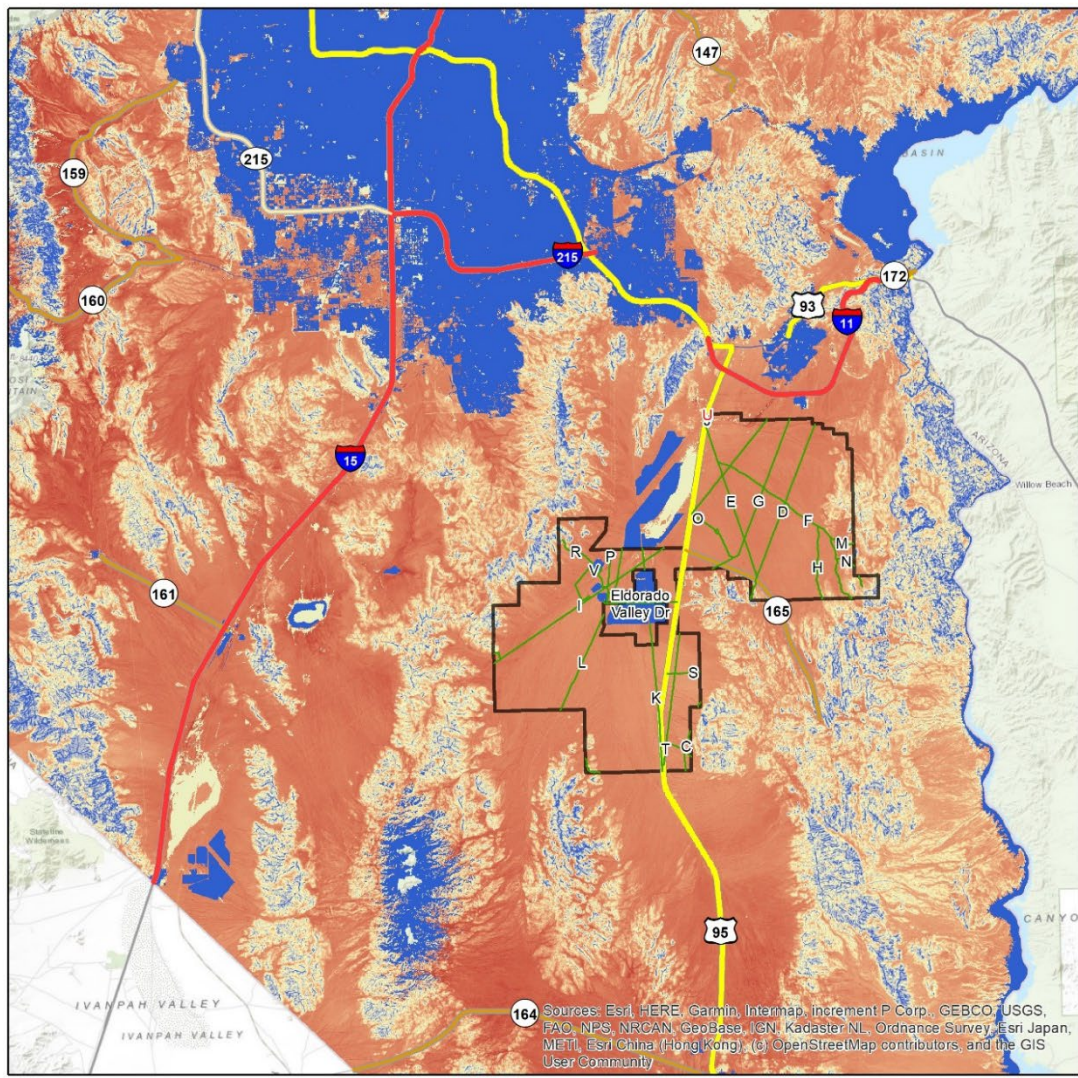
Source: Esri, Maxar, GeoEye, Earthstar Geographics, CNES/Airbus DS, USDA, USGS, AeroGRID, IGN, and the GIS User Community

SNPLMA Strategic Plan Values – Connectivity

Clark County
Desert Conservation Program
November 1, 2023

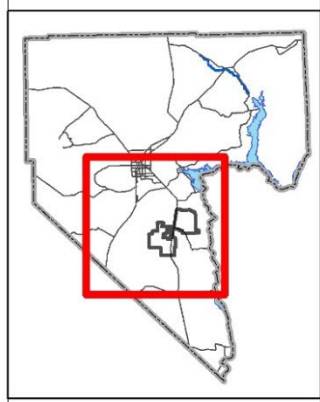
SNPLMA Round 20 Proposal
BCCE Translocation
Plan Update

Strategic Plan Values Map



Legend

- BCCE
- BCCE Open Roads
- Connectivity**
- High
- Low

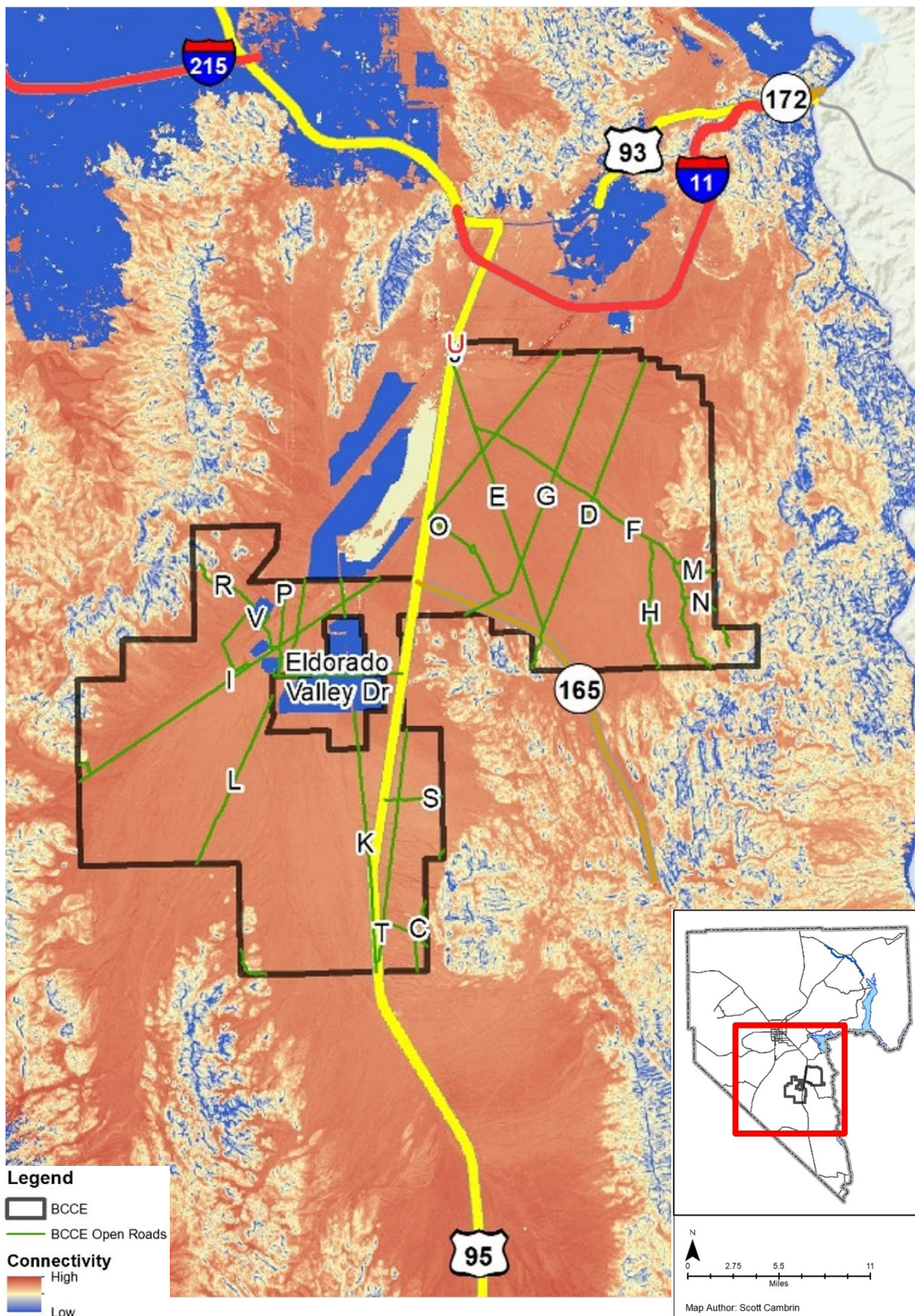


North arrow pointing up.

Scale bar: 0, 2.75, 5.5, 11 Miles.

Map Author: Scott Cambrin

SNPLMA Strategic Plan Values – Connectivity (zoomed)



M. PHOTOS

Photo 1. Biologist performing telemetry using a radio antenna.



Photo 2. Biologists performing a health assessment on a desert tortoise.



Photo 3. Photo of Biologist during line distance sampling. Recent carcass that was found while surveying in the foreground and transect string to the right can be seen in the photo.

N. PERFORMANCE MEASURES (PM)

SNPLMA FY2020-FY2024 STRATEGIC PLAN GOAL 1: Sustain the Quality of the Outdoor Environment by Conserving, Preserving, and Restoring Natural and Cultural Resources		
PM for Habitat Enhancement	Definition of Performance Measure	Quantity
H14 - Number of Threatened and Endangered Species Recovery Actions Implemented	Report the number of individual recovery actions performed for threatened or endangered species recovery as identified in recovery plans, conservation management plans, or land use planning documents. Include surveys, inventories, and monitoring as recovery actions. Note: One distinct action repeated 5 times over the course of the project would report as 1 action, not 5. The same recovery action conducted at distinct sites can be counted once for each site (this does not apply to individual plots within one single project site). The number of acres over which the actions were taken are reported under either H4 or H6. Report each action as one unit.	1 survey/ also helps address recovery action 3.4 in revised recovery plan.
H15- Number of Conservation Actions Implemented for Non-Listed Species	Report the number of individual conservation actions for species not listed under the Endangered Species Act. Note: One distinct action repeated 5 times over the course of the project would report as 1 action, not 5. The same conservation action conducted at distinct sites can be counted once for each site (this does not apply to individual plots within one single project site).The number of acres over which the actions were taken are reported under either H4 or H6. Report each action as one unit.	0
H16 - Miles of Roads or Trails Decommissioned and/or Rehabilitated	Report the number of miles of roads and/or trails decommissioned and/or rehabilitated within all habitats (urban, upland, riparian, stream, trails in caves, etc.). Closure may include designation, signing, blockage by physical means, obliteration, etc. Report to the nearest whole mile.	0
H17 – Miles of Roads or Trails Surveyed, Inventoried, or Monitored	Report the number of miles of roads and/or trails inventoried or monitored. Report to the nearest whole mile or linear foot. Report to the nearest whole mile.	0
SNPLMA FY2020-FY2024 STRATEGIC PLAN: Other Performance Measures that Also Support the Three Values for SNPLMA Implementation of Sustainability, Connectivity, and Community		
Other PM	Definition of Performance Measures	Quantity
O9 – Number of GIS Databases Generated and/or Map Layers Produced	Report the number of GIS databases created and/or the number of map layers produced to identify the location of natural resources within the environment and provide mapping for use in educational programs. Report each database or map layer as one unit.	4
O10 – Number of Volunteers Used	Report the number of volunteers used in educational or interpretive programs and for surveying, monitoring, or restoration activities. Report each volunteer as one unit.	0

O. BLM CONSULTATION LETTER



United States Department of the Interior



BUREAU OF LAND MANAGEMENT

Southern Nevada District Office
4701 N. Torrey Pines Drive
Las Vegas, Nevada 89130
<http://www.blm.gov/nevada>

In Reply Refer To:
2710 (NVS00000)

Ms. Kimberley Jenkins
Principal Environmental Specialist
Desert Conservation Program
Clark County, Department of Environment and Sustainability
4701 West Russel Road
Las Vegas, Nevada 89118
Kimberley.Jenkins@ClarkCountyNV.gov

Dear Ms. Jenkins:

This correspondence acknowledges the participation of Clark County (County) in the Southern Nevada Public Land Management Act (SNPLMA) Round 20 Multi-Species Habitat Conservation Plan (MSHCP) consultation meeting held on October 3, 2023. I would like to thank the County for their continued partnership in the SNPLMA program for the development of MSHCP projects and for participating in Round 20.

The County has met the Bureau of Land Management (BLM) consultation requirement concerning the MSHCP Round 20 project nominations as described below.

Boulder City Conservation Easement Translocation Plan Update – The County proposes to determine the suitability of the Boulder Conservation Easement (BCCE) to accept additional tortoises above the limits identified in the 2014 and 2017 plan. The goal of the project is to develop a revised translocation plan that can be used as a guide for continued translocation of tortoises removed from construction sites to the BCCE. The proposal identifies the potential use of drones for data collection. The BLM does not have any protocols or approval processes required for drone use over BLM managed lands.

Because the proposed project does not involve ground disturbance or encroachments on BLM land, compliance with the National Environmental Policy Act is not required. In addition, per 36 CFR 800.3 (a)(1), this project has no potential to cause adverse effects to historic properties. No further compliance with Section 106 of the National Historic Preservation Act is required.

Connectivity Management Plan Implementation – This proposal is to implement actions identified in the 2022 Clark County Connectivity Management Plan. This includes surveying culverts along highways to determine which are passable by tortoises, attaching tortoise fencing to up to 30 prioritized culverts, begin recording data on how long before tortoises start using culverts, and a developing fire management plan for Clark County that focuses on reducing the risk of wildfire in high value desert tortoise habitat and connectivity corridors. BLM understands that Clark County will coordinate with appropriate federal agencies in the development of the fire management plan.

INTERIOR REGIONS 8 & 10 • LOWER COLORADO BASIN & CALIFORNIA-GREAT BASIN

ARIZONA, CALIFORNIA, NEVADA, OREGON*

* PARTIAL

While the proposed project does include some BLM managed lands, all ground disturbances would be within existing Nevada Department of Transportation (NDOT) rights-of-way. Please include coordination with BLM wildlife biologists during the evaluation and identification of the prioritized culverts.

This project is subject to the requirements of Section 106 of the National Historic Preservation Act. The SNPLMA program will assist with this process including coordination with the State Historic Preservation Office and consultation with federally recognized Indian Tribes.

Tule Springs Enhancement and Wildlife Protection – This proposal is to improve infrastructure, access, and wildlife protective measures along Corn Creek Road. This project does not involve any ground disturbance or encroachment on BLM managed lands. Corn Creek Road is a U.S. Fish and Wildlife Service (USFWS) road (casefile number N-93761). It is the BLM's understanding that the road is now jointly managed by both USFWS and Tule Springs National Monument, National Park Service (NPS). This project involves the installation of fencing, tortoise fencing, tortoise guards, culverts, kiosks, and relocation of a road sign from NDOT ROW to NPS lands.

This project is subject to the requirements of Section 106 of the National Historic Preservation Act. The SNPLMA program will assist with this process including coordination with the State Historic Preservation Office and consultation with federally recognized Indian Tribes.

Muddy River Restoration – This proposal is to conduct restoration work to reestablish native riparian and upland vegetation within the Muddy River Reserve Unit properties. The proposed project is located primarily on lands owned Clark County but does include proposed work on an existing head cut on the BLM parcel upstream of the project area.

Should this proposal be selected to receive SNPLMA funding, the portion of the proposal located on BLM managed land to stabilize an existing head cut will require coordination with the BLM to determine the appropriate authorization and any additional consultation needed consistent with NEPA. Bear in mind that the minimum amount of time to process a request through NEPA is 18 months or more. This project is subject to the requirements of Section 106 of the National Historic Preservation Act. The SNPLMA program will assist with this process including coordination with the State Historic Preservation Office and consultation with federally recognized Indian Tribes.

If you have any questions or comments regarding the consultation meeting or the MSHCP program please contact Michelle Leiber, SNPLMA Program Manager at 702-515-5168 or mleiber@blm.gov.

Sincerely,



Digitally signed by MICHAEL
CHATTERTON
Date: 2023.10.25 14:36:20 -07'00'

M. Ryan Chatterton
Acting District Manager

e-cc: Bruce Sillitoe, Field Manager, Las Vegas Field Office
Catrina Williams, Field Manager, Red Rock/Sloan Field Office
Michelle Leiber, SNPLMA Program Manager, SNPLMA Division

P. SUPPORT LETTERS



United States Department of the Interior

FISH AND WILDLIFE SERVICE
 Southern Nevada Fish and Wildlife Office
 4701 North Torrey Pines Drive
 Las Vegas, Nevada 89130



November 1, 2023
Sent electronically

Michelle Leiber
 SNPLMA MSHCP Program Manager
 Bureau of Land Management
 SNPLMA Division
 4701 N. Torrey Pines Dr.
 Las Vegas, Nevada 89130

RE: Letter of Support for Clark County's Southern Nevada Public Land Management Act Round 20 Boulder City Conservation Easement Translocation Plan Update Project

Dear Michelle Leiber:

I am pleased to provide this letter to express our support for Clark County's Round 20 nomination of the Boulder City Conservation Easement Translocation Plan Update Project (Project) under the Multi-Species Habitat Conservation Plan (MSHCP) category of the Southern Nevada Public Land Management Act (SNPLMA). This project would help to achieve recovery action 3.4 in the revised U.S. Fish and Wildlife Service (Service) Recovery Plan for the Mojave Population of the Desert Tortoise (*Gopherus agassizii*) aiding the Service in meeting recovery goals for the Mojave desert tortoise.

This project will be completed in coordination with the Service's Desert Tortoise Recovery Office. This project will be useful in helping to translocate tortoises removed from construction sites, as well as increase tortoise numbers in the Eldorado Valley helping to make it a more sustainable population.

Over the last two decades, the MSHCP has made important contributions to the conservation and recovery of the desert tortoise in Clark County, Nevada. This project is a continuation of these efforts and I encourage the Partners Working Group and the SNPLMA Executive Committee to move this nomination forward for funding. Please feel free to contact me should you have questions or need additional information regarding the Service's support for this project.

Sincerely,

GLEN
 KNOWLES

Digitally signed by GLEN
 KNOWLES
 Date: 2023.11.01 09:50:35
 -07'00'

Glen Knowles
 Field Supervisor



United States Department of the Interior



BUREAU OF LAND MANAGEMENT

Southern Nevada District Office
 Las Vegas Field Office
 4701 N. Torrey Pines Drive
 Las Vegas, Nevada 89130
<http://www.blm.gov/nevada>

In Reply Refer To:
 6840 (NVS01000)

Michelle Leiber
 SNPLMA Program Manager - PTNA and MSHCP
 Bureau of Land Management
 4701 North Torrey Pines Drive
 Las Vegas, Nevada, 89130

Dear Ms. Leiber:

I am pleased to provide this letter to express our support for Clark County's Round 20 nomination of the BCCE Translocation Plan Update under the Multi-Species Habitat Conservation Plan (MSHCP) category of the Southern Nevada Public Land Management Act (SNPLMA). This project would help to achieve recovery action 3.4 in the revised U.S. Fish and Wildlife Service desert tortoise recovery plan aiding the U.S. Fish and Wildlife Service in meeting recovery goals for the Mojave desert tortoise (*Gopherus agassizii*).

This project will be completed in coordination with the U.S. Fish and Wildlife Desert Tortoise Recovery Office. This project will be useful in helping to translocate tortoises removed from construction sites, as well as increase tortoise numbers in the Eldorado Valley helping to make it a more sustainable population.

Over the last two decades, the MSHCP has made important contributions to the conservation and recovery of the desert tortoise in Clark County NV. This project is a continuation of these efforts and I encourage the partners Working Group and the SNPLMA Executive Committee to move this nomination forward for Funding.

I am aware that some of the surveys may occur on lands governed by the Bureau of Land Management, since no ground disturbance will occur there should be no issues with access to complete these surveys provided all the proper rules and procedures are followed.

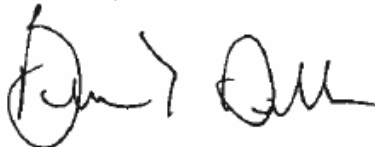
INTERIOR REGION 8 • LOWER COLORADO BASIN

ARIZONA, CALIFORNIA*, NEVADA*

* PARTIAL

Please feel free to contact Steve Leslie at 702-515-5054, or sleslie@blm.gov, should you have questions regarding the BLM's support for this project.

Sincerely,

A handwritten signature in black ink, appearing to read "Bruce Sillitoe". The signature is written in a cursive style with a large initial "B" and a distinct "S".

Bruce Sillitoe
Field Manager
Las Vegas Field Office



STATE OF NEVADA
DEPARTMENT OF WILDLIFE

6980 Sierra Center Parkway, Suite 120
Reno, Nevada 89511
Phone (775) 688-1500 • Fax (775) 688-1595

ALAN JENNE
Director
JORDAN GOSHERT
Deputy Director
CALEB MCADOO
Deputy Director
MIKE SCOTT
Deputy Director

November 1, 2023

Michelle Leiber
SNPLMA MSHCP Program Manager
Bureau of Land Management
SNPLMA Division
4701 N. Torrey Pines Dr.
Las Vegas, NV 89130

RE: Letter of Support for Clark County's Round 20 Nomination BCCE Translocation Plan Update project.

Ms. Leiber,

I am pleased to provide this letter to express our support for **Clark County's Round 20 nomination of the BCCE Translocation Plan Update** under the Multi-Species Habitat Conservation Plan (MSHCP) category of the Southern Nevada Public Land Management Act (SNPLMA). This project would help to achieve recovery action 3.4 in the revised U.S. Fish and Wildlife Service desert tortoise recovery plan aiding the U.S. Fish and Wildlife Service in meeting recovery goals for the Mojave desert tortoise (*Gopherus agassizii*).

This project will be completed in coordination with the U.S. Fish and Wildlife Desert Tortoise Recovery Office. This project is necessary to update the 2014 translocation plan for tortoises removed from construction sites, as well as understanding the impacts that previous translocation efforts have had towards achieving the original goal of augmenting the El Dorado Valley tortoise population. Once population density estimates are assessed for both North and South units, the 2014 translocation plan can be reevaluated relative to these results which will inform management decisions around future translocation efforts. NDOW is eager to participate in a translocation plan update and is looking forward to an assessment of past translocation efforts.

Over the last two decades, the MSHCP has made important contributions to the conservation and recovery of the desert tortoise in Clark County NV. This project is a continuation of these efforts and I encourage the partners Working Group and the SNPLMA Executive Committee to move this nomination forward for Funding.

Thank you for your consideration in funding this proposal. If you have any questions, please don't hesitate to reach out to myself or Wildlife Diversity's Southern Region Supervising Biologist, Matt Flores (mhflores@ndow.org; 702-668-3936).

Sincerely,

Jennifer Newmark
Wildlife Diversity Division Administrator

**SNPLMA Round 20
Multi-Species Habitat Conservation Plan
Nomination Addendum – Comments and Questions
Update as of March 2024**

Nomination: Tab 02

Entity: Clark County

Project: Connectivity Management Plan Implementation

Section A – Background

“This project would carry the work of the Connectivity Management Plan forward into implementation by addressing two of the actions recommended in the plan to maintain and enhance connectivity of desert tortoise habitat throughout Clark County. More specifically, this project would address the following recommendations from the plan:

- 1. “Culvert-2: Ensure culverts are clear of vegetation/debris and tortoise exclusionary fencing is properly attached to culverts at the following locations:**
 - a. Nevada State Highways 161 and 164 in the Ivanpah Valley Area**
 - b. Northshore Drive in the Lake Mead Area**
 - c. Mormon Mountains/Mesquite stretch of I-15 in the North Area**
 - d. US-93 in the North Area and Northwest Corridor Area. Ensure all culverts outside of Las Vegas are connected to the fence and clear for tortoise movement.**
 - e. Union Pacific Railroad along I-15 in the North Area (ensure culverts remain clear of vegetation/debris)**
 - f. State Highway 160 in the Pahrump/Trout Canyon Area**
 - g. State Highway 164 (Nipton Road) in the Piute-Eldorado Valley Area”**

Comment: Culvert locations where work is proposed (clearing vegetation/debris and fencing) are identified on nomination maps shown in Section L (Maps). The nomination background section will need to be updated to include US-95 and Hwy-165 as part of the project site.

Section C – Purpose Statement

“Clark County Desert Conservation Program will implement the work described in this nomination as partial mitigation under the Clark County MSHCP and to aid in recovery efforts for the desert tortoise. The purpose of this project is to increase, protect, and maintain habitat connectivity for the threatened desert tortoise and other wildlife throughout Clark County, Nevada, by enhancing and increasing the number of habitat connectivity features across the landscape and through fire management planning.”

Comment: Nominations must contain a specific statement of the purpose of the project that briefly describes in narrative format the who, what, where, and why. The nomination purpose statement has been edited from the original to read as follows: *Clark County will implement work recommended in the Connectivity Management Plan by ensuring culverts are clear, install tortoise exclusionary fencing, and prepare a fire management plan to increase, protect, and maintain habitat connectivity for the threatened desert tortoise and other wildlife throughout Clark County, Nevada.*

Section D – Project Deliverables

1. Primary Deliverables:

a. Culvert Attachments:

- a. **Culvert Survey:** Conduct a survey of all culverts associated with desert tortoise fencing, excluding those associated with I-15 South of Las Vegas (598 culverts). Collect additional data at 98 sites to develop site-specific cost estimates for culvert attachment. Deliverable will include a report and GIS data. The report will describe current conditions at each of the 598 culverts to include passability score and make comparisons to the 2019 surveys to draw inferences about how culvert conditions change over time. The report will also include data necessary for the Culvert Prioritization task, as further described below.
- Comment: This deliverable describes surveying all culverts associated with desert tortoise fencing excluding 598 culverts associated with I-15S of Las Vegas.
 - The County’s background section under “Culvert Attachments” reads:
 - “...a total of 200 culverts were identified as potentially suitable for connection to existing fencing during the 2019 surveys; however, given the time since surveys were initially conducted...the current state of these culverts is unknown. Therefore, during the first year of this project, the DCP proposes to re-survey the culverts from the 2019 project,...and make an assessment of the fencing needs for each site. This will include all culverts associated with desert tortoise exclusion fencing within the County excluding those along I-15 south of Las Vegas, for a total of 598 culverts to be evaluated.
 - The USFWS has determined that connectivity moving east-west through the I-15 corridor south of Las Vegas has already been lost due to existing and planned infrastructure in the I-15 corridor; thus, reconnecting culverts in this area would not be useful and these culverts will not be re-evaluated.
 - Re-surveying all culverts from the 2019 surveys will provide data to evaluate how culvert conditions change over time and how these conditions may vary across the landscape. However, for the purposes of evaluating culverts for attachment to fencing, the DCP will focus on 98 culverts in the area south of the Las Vegas Valley along U.S. Highway 95, U.S. Highway 93, State Route 163, and State Route 165.”
 - Nomination project deliverables need to be updated by clarifying estimated number of culverts county proposes to survey (e.g., 98, 200, 598).
- b. **Culvert Prioritization:** using data collected during the Culvert Surveys, evaluate 98 culverts to assign a priority based on passability rating, quality of adjacent habitat, and consultation with USFWS and NDOT. Develop a site-specific cost estimate for 98 culvert locations. Identify the 40 highest priority culverts for further environmental review.
- No Comment.
- c. **Federal Environmental Law Compliance:** Complete reviews to ensure compliance with federal environmental laws such as NEPA, Section 106, and

Section 7. Identify approximately 40 of the highest priority culverts to attach to fencing. The maximum number of culverts that can be connected given the available budget will be selected; this will be based on the site-specific cost estimates that are developed under the Culvert Prioritization deliverable.

- Comment: The budget detail (MS-Excel) identifies 40 culvert sites for environmental review at a cost of \$6,250 per culvert:
 - ...but deliverable reads “*identify approximately 40 of the highest priority culverts to attach fencing.*” Project deliverables must be measurable.
 - What is the number of culvert sites being reviewed during environmental compliance process (e.g., 200, 98 or 40) to determine the 40 highest priority culvert sites to attach fencing? Please clarify.
- d. **Connect Culverts to Fence: Connect fencing on approximately 20 to 30 culverts. Final number and location of culverts will be determined following the Culvert Prioritization and Federal Environmental Law Compliance deliverables. Install game cameras at each culvert where fencing is attached.**
 - Comment:
 - Is this deliverable tortoise fencing or other types of fencing—this should be clarified as it would impact proposed costs?
 - Regarding the installation of game cameras--the budget detail (MS-Excel) identifies 120 game cameras for purchase. Deliverables must be measurable and cross-reference with the budget detail—this deliverable will need to be updated to identify the number of cameras to be installed.
- e. **Camera Monitoring of Culverts (year 1): Collect and analyze one year of monitoring data indicating rate of tortoise use to determine effectiveness of culvert connections.**
 - Comment: Deliverables must be measurable. How would the SNPLMA Division measure the County’s progress on this deliverable?

b. Fire Management Planning

1. **Workshop/Meetings: A series of meetings or a workshop with fire management personnel from local agencies to determine current modeling and what data is needed.**
 - Comment: Project deliverables must be measurable. How would the SNPLMA Division measure County’s progress on a “series of meetings”?
2. **Hazardous Fuels Modeling: Model fire risk and hazardous fuels to determine areas that are most susceptible to fire in the future.**
 - Comment: Project deliverables must be measurable. How would the SNPLMA Division measure the County’s progress on this deliverable?
3. **Fire Management Plan: Prepare a Fire Management Plan that describes the areas of highest concern and describes recommended actions to reduce fire threats.**
 - No Comment.

2. **Anticipated Deliverables:**

Camera Monitoring of Culverts (year 2): Collect and analyze a second year of monitoring data indicating rate of tortoise use to determine effectiveness of culvert connections.

- Comment: Deliverables must be measurable. Is this deliverable to do a second year of monitoring associated with the 120 game cameras proposed for purchase

and installation? What would be the basis for determining whether or not the County would seek prior approval to re-categorize this deliverable from anticipated to primary?

3. **Standard Deliverables:**

- No comment.

Section E – Project Location

“Location data is provided for 98 culverts that will be evaluated for attachment to the fence, because there is potential for ground-disturbing activities at these locations. The location of survey efforts (598 culverts) is shown on maps submitted with this nomination. All other work described in this nomination consists of surveys and modeling, thus no ground disturbance will occur.”

Comment: Based on comment provided above for Section D.1.a “Culvert Attachments” –please clarify the number of survey efforts (e.g., 598, 200, 98)?

Section I – Project Budget (and Excel Budget Detail)

Tab 1 “Personnel” and Tab 2 “Fringe Benefits”

“Clark County Desert Conservation Program staff will monitor the project and report financial and progress reports to the BLM/SNPLMA Division. These costs will be covered by the recipient organization and not reimbursed through the SNPLMA project funds.”

Comment: There are no allocated costs proposed for “Personnel” (salaries and wages) for this project. This is an important cost area that demonstrates the involvement of the Recipient (Clark County). While SNPLMA does not require cost share—if SNPLMA funds are not allocated for these costs the recipient will need to outline costs to be covered by other non-federal funding (e.g., cost share). Cooperative agreement projects require substantial involvement by the recipient. Substantial involvement by a recipient of a federal award must clearly identify staff time (hours/months), salary/wage and total estimated cost over the 5-year period of performance in the budget to show substantial involvement in the project and how the project will be managed a to successful completion including fiscal staff who are spending time overseeing fiscal and contracting responsibilities. County will need to provide a signed contributed funds commitment letter for any voluntary non-federal cost share, if any.

Tab 5 “Supplies”

“All supplies in conjunction with the analysis would cost less than 90k for the project. The main alternative would be to do tortoise surveys around the culverts and then radio track any tortoises that were found for the final two years of the project. Extra surveys and tracking for two years would cost a minimum of 300k, or 210k more than is currently suggested and although that method may be more accurate on whether tortoises are actually crossing it is far less precise as it gives you access to fewer tortoises on the whole. For example we used both methods on a previous project and had one crossing using radio telemetry but estimated 30 using camera trapping. Camera trapping is the cheaper and more superior method for this project.”

Comment: County needs to clarify supplies anticipated to cost less than \$90,000.

Tab 6 “Contractual” costs and justification narrative

Description of Contract	Unit	Unit of Measure	Unit Cost	SNPLMA Funds	Unit	Unit of Measure	Unit Cost	Cost Share Funds (if applicable)
Fire Management Plan	1	contract	\$175,000	\$175,000				\$
Camera data analysis	1	contract	\$57,900	\$57,900				\$
Culvert Survey	1	contract	\$75,000	\$75,000				\$
Environmental reviews	1	contract	\$250,000	\$250,000				\$
Culvert Fence Connections	30	connections	\$12,200	\$366,000				\$
				TOTAL (SNPLMA):	\$923,900	TOTAL (Cost Share):	\$	

Justification: “All of these items are anticipated to be completed as a single contract.”

- Comment: The instructions for completing the budget detail requires itemizing separate budget line items for each subaward or contract. If the above is a “single contract” then it will need to be updated to reflect as a single budget line item with the detail breakdown in the justification section of the budget detail spreadsheet.

Section L - Maps

Location Map

Comment: The location map is depicting lines only (no labels) for township, range, and section. The nomination needs to be updated to properly label at minimum the township and range areas.

Assessor Parcel Map “Culverts” US 95-1.

Comment: The parcel map identifies culvert locations along US-95 and Hwy-165; but these highway areas are not a specified culvert identified in Section A “Background” item #1 for culverts-2. The nomination background section should be updated.

**Southern Nevada Public Land Management Act
Multi-Species Habitat Conservation Plan
Round 20**

Clark County



Connectivity Management Plan Implementation

Amount Requested: \$948,664

A. BACKGROUND INFORMATION

The Mojave population of desert tortoise was listed as Threatened on April 2, 1990, based on population declines due to many identified causes including illegal collection, vandalism, release of captive tortoises, spread of disease, agricultural development, urban growth, landfills, livestock grazing, road construction, and irresponsible off-road travel. A recovery plan for the desert tortoise was developed and published by the U.S. Fish and Wildlife Service (USFWS) in 1994 and revised in 2011, with the goal of recovery and eventual delisting of the desert tortoise. One of the recovery actions listed in the 2011 Revised Recovery Plan for the Mojave Population of the Desert Tortoise is to determine the importance of corridors and physical barriers to desert tortoise distribution and gene flow (Recovery Action 5.5).

In 2022, the Desert Conservation Program (DCP) completed a SNPLMA Round 16-funded multi-species habitat conservation plan (MSHCP) project to better understand desert tortoise connectivity across Clark County (*SNPLMA Round 16 Project CC72: Identifying and Prioritizing Management Actions that Address Connectivity of Desert Tortoise Populations*). That project culminated in the development of the Clark County Connectivity Management Plan (2022), which gives recommendations for maintaining and increasing desert tortoise habitat connectivity throughout the County through culvert and fence maintenance and fire prevention and management. One of the primary recommendations identified in the Connectivity Management Plan is the need for more connections across roads and highways in Clark County that will allow wildlife to safely cross from one side to another.

This project would carry the work of the Connectivity Management Plan forward into implementation by addressing two of the actions recommended in the plan to maintain and enhance connectivity of desert tortoise habitat throughout Clark County. More specifically, this project would address the following recommendations from the plan:

1. Culvert-2: Ensure culverts are clear of vegetation/debris and tortoise exclusionary fencing is properly attached to culverts at the following locations:
 - a. Nevada State Highways 161 and 164 in the Ivanpah Valley Area
 - b. Northshore Drive in the Lake Mead Area
 - c. Mormon Mountains/Mesquite stretch of I-15 in the North Area
 - d. US-93 in the North Area and Northwest Corridor Area. Ensure all culverts outside of Las Vegas are connected to the fence and clear for tortoise movement.
 - e. Union Pacific Railroad along I-15 in the North Area (ensure culverts remain clear of vegetation/debris)
 - f. State Highway 160 in the Pahrump/Trout Canyon Area
 - g. State Highway 164 (Nipton Road) in the Piute-Eldorado Valley Area
2. Fire-1: Prepare a Fire Management Plan, which may include the following:
 - a. Fire management goals and objectives
 - b. Hazardous fuels monitoring
 - c. Fire occurrence mapping
 - d. Assessing fire effects

- e. Monitoring effectiveness of fuel treatments
- f. Coordination with federal, state, and local agencies related to wildfire management.

For more information on the Connectivity Management Plan go to

<https://files.clarkcountynv.gov/clarkcounty/Connectivity%20Management%20Plan%20Final.pdf>

Culvert Attachments

To develop the Connectivity Management Plan, the Desert Conservation Program conducted a literature review and synthesis, consulted species and land management agency experts, and conducted several studies to collect data relevant to evaluating and modeling connectivity of desert tortoise habitat. As part of this effort, a systematic survey of culverts along major roads and highways in Clark County was conducted in 2019 to evaluate the status of culverts (e.g., connected to fence, passable by tortoises, etc.). All culverts surveyed were assigned a grade (1-5), with Grade 1 representing culverts that surveyors evaluated as easily passable by tortoises, to Grade 5 representing culverts that would require significant modification to become passable by tortoises. The total number of culverts surveyed in 2019 by assigned grade is shown in Table 1 below.

Table 1. Number of culverts for each grade of passability.

	# of Culverts
Grade 1 / Easily passable	225
Grade 2 / Passable with some effort	112
Grade 3 / Passable by some tortoises	112
Grade 4 / Not passable requires intervention	109
Grade 5 / Major redesign or heavy equipment	165
All culverts	723

During these surveys, it was noted that most culverts in Clark County are either not suitable for the passage of desert tortoises in their current condition, or if they are suitable, they are not connected to the fence and thus tortoises are blocked from accessing the culvert. Of more than 700 culverts surveyed in 2019, only 51 were considered passable by desert tortoise and were also attached to fencing.

The evaluation of current connectivity features in the Connectivity Management Plan determined that the average spacing between connectivity features in Clark County is approximately 5,000 meters (~3 miles), which far exceeds the USFWS recommended distance. The USFWS recommends an average distance of no greater than 680 meters between habitat connectivity areas. Thus, the DCP is proposing to increase the number of connectivity features across desert tortoise habitat within the County. A total of 200 culverts were identified as potentially suitable for connection to existing fence during the 2019 surveys; however, given the time since surveys were initially conducted and the heavy monsoon rains that have occurred since 2019, the current state of these culverts is unknown. Therefore, during the first year of this project, the DCP proposes to re-survey the culverts from the 2019 project, score them based on their passability, and make an assessment of the fencing needs for each site. This will include all culverts

associated with desert tortoise exclusion fencing within the County excluding those along the Interstate-15 (I-15) corridor south of Las Vegas, for a total of 598 culverts to be evaluated. The USFWS has determined that connectivity moving east-west through the I-15 corridor south of Las Vegas has already been lost due to existing and planned infrastructure in the I-15 corridor; thus, reconnecting culverts in this area would not be useful and these culverts will not be re-evaluated.

Re-surveying all culverts from the 2019 surveys will provide data to evaluate how culvert conditions change over time and how these conditions may vary across the landscape. However, for the purposes of evaluating culverts for attachment to fencing, the DCP will focus on 98 culverts in the area south of the Las Vegas Valley along U.S. Highway 95, U.S. Highway 93, State Route 163, and State Route 165. Location coordinates for each of the 98 culverts are provided in the Project Location section below. Based on the passability rating (Table 1) that is assigned to each culvert during the re-survey effort, culverts that continue to have high passability will be eligible for connection to adjacent fencing.

Culverts will be prioritized for connection to the fence based on a variety of factors: passability rating, quality of adjacent habitat, and ease and cost associated with connecting the culvert to the fence. Each culvert is unique and the level of effort and cost to connect to each culvert is expected to vary; therefore, during the priority evaluation the DCP will collect additional data at each of the 98 culvert sites to develop site-specific cost estimates for each culvert based on topography, soils, length of fencing needed, and other relevant factors.

Final culverts selected for attachment will be determined based on coordination with USFWS and the Nevada Department of Transportation (NDOT), the priority evaluation, and the cost of connecting each culvert. With the funding requested in this proposal, we anticipate that 20 to 30 culverts can be connected through this project. From the 98 culverts that are evaluated for attachment under this effort, the County will select 40 for environmental/cultural review; this will provide 10 back-up locations to allow for the avoidance of any significant resources that may be disclosed during environmental/cultural review.

Lastly, once culvert connections are completed game cameras will be affixed to the underside of the culverts to monitor effectiveness and the rate at which tortoises use culverts. These cameras will be active in the spring and fall desert tortoise active seasons. Each culvert will require up to 4 game cameras for full coverage of the culvert, for an estimated maximum of 120 cameras. Cameras will be affixed by fence construction crews. Photos will be analyzed using machine learning, which is a method that entails training computers to search through and identify specific images instead of having people look at each image individually. The DCP has used machine learning to evaluate game camera photos in other projects with great success and we propose to use it here because it is the more cost-effective approach. This will occur during the final year of the project to determine the rate at which tortoises use the reconnected culverts for migration across the roads and will provide important data for the USFWS recovery efforts.

Fire Management Plan

The second recommendation from the Connectivity Management Plan that is incorporated into this nomination is fire management planning. A fire management plan will identify proactive measures to reduce fire risk within important habitat areas in Clark County by identifying areas

of high fire risk and make recommendations regarding the reduction of fuels and ongoing monitoring. The development of the plan will rely on modeling and expert opinion to focus efforts in areas with the highest likelihood of supporting large fires in the future. This plan will be beneficial to all landowners throughout the County.

The County will hold a workshop or a set of meetings with local land managers and those in charge of fire management at those agencies to review available data and to gather expert opinion current areas of concern and on what they feel is needed for accurate assessment of risks during the management planning phase. Data will be gathered from those agencies as well as public sources to create models of fire risks and hazardous fuels. That data, along with expert opinion, will be incorporated into a fire management plan aimed at decreasing the frequency of fires in desert tortoise habitat.

Agency Coordination and Compliance with Environmental Laws

All ground disturbance for culvert-to-fence connections will occur within already existing public rights-of-way held by NDOT within Clark County. The DCP and NDOT will enter into an interlocal agreement to ensure both parties are in agreement about proceeding with the project, to describe the responsibility of each party in carrying out the project, and to clearly define long-term maintenance commitments and ownership of the fence connections.

These sites have already been disturbed, but the DCP acknowledges the culvert connection aspect of the project will likely require additional environmental review, including analysis pursuant to the National Environmental Policy Act (NEPA), Section 106 consultation, and Section 7 consultation. Only the final 40 sites prioritized for installation of connecting fence will be moved forward for further environmental analysis. The development of the fire management plan will occur as a desktop modeling exercise and will result in no ground disturbance. No further environmental reviews are required for development of the fire management plan.

Project Management

The DCP utilizes Case360 for project management. All contractual agreements must specify the milestones and deliverables to accomplish the goals of the contract. Tracking of a contractor's performance is accomplished through completion of milestones and submittal of deliverables as outlined in the agreement. All contractors working for the DCP are required to submit a quarterly status report to detail project progress made during the reporting period and to highlight any potential issues or special considerations. Contractors are also required to submit an annual report (for multi-year agreements) and a biennium progress report. In addition, the DCP project manager will meet a minimum of quarterly with the contractor to discuss work completed and to discuss any issues or protocol adjustments that may be warranted.

1. Describe relationship to prior approved phases or related SNPLMA projects and anticipated future phases:

This project is a direct result of recommendations from the Round 16 project CC72 "Identifying and Prioritizing Management Actions that Address Connectivity of Desert Tortoise Populations." One of the primary deliverables from CC72 was the Connectivity Management Plan, which provided recommendations to improve and enhance desert tortoise connectivity across Clark County. This project is the first step in implementing those recommendations.

2. Acknowledgement of stand-alone project and no guarantee of funding for future phases:
The DCP acknowledges that this is a stand-alone project and that the funding of this project does not have an effect on any future phases that may be associated with this project.

B. SNPLMA STRATEGIC PLAN VALUES

The MSHCP category will implement the goals and objectives of the MSHCP and the SNPLMA Strategic Plan by sustaining the quality of the outdoor environment by conserving, preserving, and restoring natural and cultural resources; while focusing on the three SNPLMA core values: connectivity, sustainability, and community. This project will promote the three values as summarized below:

1. Sustainability:

Enhancing and maintaining connectivity allows for desert tortoise populations to recover more quickly when populations become depleted. This enhances sustainability of the species and supports resilience in a changing environment and in the face of catastrophic events that may occur such as extreme drought or flooding. Fire also is expected to become more frequent and drought and fire management planning can help to reduce the size and severity of wildfires in the future. This may also benefit connectivity in the desert by keeping more habitat intact.

2. Connectivity:

The main goal of this project is to enhance and maintain connectivity for the desert tortoise in Clark County. The capability of movement between disparate habitat patches should increase, facilitating more gene flow among population areas. This project will increase functional and genetic connectivity for desert tortoises as well as any other species separated by road barrier fencing that are able to pass the culverts.

3. Community:

Desert tortoises are an indicator species for health of Mojave Desert communities. Many species rely on desert tortoises and their burrows for survival in the harsh desert climate. Continued decline of this species could have large negative impacts across biological communities. As an indicator species it is vital to restore connectivity to maintain the health of an ecosystem and the species. Recovery of the species will help to restore functionality and resiliency to the desert community. This project would also be used to inform the local community and policy makers on the status of the species and what actions may be necessary for improvement. The results can be used as an aid in public education regarding the perils of the desert tortoise and what is being done to progress species recovery.

C. PURPOSE STATEMENT

Clark County will implement work recommended in the Connectivity Management Plan by ensuring culverts are clear, install tortoise exclusionary fencing, and prepare a fire management plan to increase, protect, and maintain habitat connectivity for the threatened desert tortoise and other wildlife throughout Clark County, Nevada.

D. PROJECT DELIVERABLES

1. Primary Deliverables:

a. Culvert Attachments:

1. Culvert Survey: Conduct a survey of all culverts associated with desert tortoise fencing, excluding those associated with I-15 South of Las Vegas (598 culverts). Collect additional data at 98 sites to develop site-specific cost estimates for culvert attachment. Deliverable will include a report and GIS data. The report will describe current conditions at each of the 598 culverts to include passability score and make comparisons to the 2019 surveys to draw inferences about how culvert conditions change over time. The report will also include data necessary for the Culvert Prioritization task, as further described below.
2. Culvert Prioritization: using data collected during the Culvert Surveys, evaluate 98 culverts to assign a priority based on passability rating, quality of adjacent habitat, and consultation with USFWS and NDOT. Develop a site-specific cost estimate for 98 culvert locations. Identify the 40 highest priority culverts for further environmental review.
3. Federal Environmental Law Compliance: Complete reviews to ensure compliance with federal environmental laws such as NEPA, Section 106, and Section 7. Identify approximately 40 of the highest priority culverts to attach to fencing. The maximum number of culverts that can be connected given the available budget will be selected; this will be based on the site-specific cost estimates that are developed under the Culvert Prioritization deliverable.
4. Connect Culverts to Fence: Connect fencing on approximately 20 to 30 culverts. Final number and location of culverts will be determined following the Culvert Prioritization and Federal Environmental Law Compliance deliverables. Install game cameras at each culvert where fencing is attached.
5. Camera Monitoring of Culverts (year 1): Collect and analyze one year of monitoring data indicating rate of tortoise use to determine effectiveness of culvert connections.

b. Fire Management Planning

1. Workshop/Meetings: A series of meetings or a workshop with fire management personnel from local agencies to determine current modeling and what data is needed.
2. Hazardous Fuels Modeling: Model fire risk and hazardous fuels to determine areas that are most susceptible to fire in the future.
3. Fire Management Plan: Prepare a Fire Management Plan that describes the areas of highest concern and describes recommended actions to reduce fire threats.

2. Anticipated Deliverables:

Camera Monitoring of Culverts (year 2): Collect and analyze a second year of monitoring data indicating rate of tortoise use to determine effectiveness of culvert connections.

3. Standard Deliverables:

- a. Ongoing administration of financial instrument.
- b. Pre-award planning, scoping, and budgeting activities, and award of contract(s).
- c. Issuance of project completion notice from DCP to BLM/SNPLMA.

- d. Issuance of final payment made to Contractor(s).
- e. Final report to BLM/SNPLMA.
- f. Notice of project completion to BLM/SNPLMA for site visit scheduling.

E. PROJECT LOCATION

Location data is provided for 98 culverts that will be evaluated for attachment to the fence, because there is potential for ground-disturbing activities at these locations. The location of survey efforts (598 culverts) is shown on maps submitted with this nomination. All other work described in this nomination consists of surveys and modeling, thus no ground disturbance will occur.

Project site address: along US-95, US-93, SR-163, and SR-165.

Legal Description: Mount Diablo Meridian - Clark County, Nevada

T30S R64E, sec. 18, lot 4, sec. 31, SWSE,	T15S R63E, sec. 34, SWSW, SWNW;
T32S R64E, sec. 2, SWSW, sec. 3, SESE, NWSE, NWSW, sec. 4, lot 77, SWSW, sec. 5, lot 47, sec. 9, lots 56, 57, sec. 11, NENW, NWNE;	T17S R63E, sec. 20, SESE, sec. 29, NENE;
T31S, R64E, sec. 6, lot 2, NESE, SESE, sec. 7, SENE, sec. 17, SWSW, SWNW, NWSW, sec. 20, SESW, SENW, NESW, sec. 29, SWNE, NWSE, sec. 32, SWNE, SESE, NWNE, NESE;	T16S R63E, sec. 4, SESE, sec. 9, NWSE, sec. 16, NESW, NENW, sec. 20, SESE, sec. 21, SWNW, sec. 29, NWSE.
T27S R63E, sec. 3 NESW, sec. 10, SENE, NESE, NWNE, sec. 11, SWSW, sec. 14, SWNW, sec. 23, SWNW, NWNW, sec. 35, SESW, SENW;	T26S R63E, sec. 5, SWNE, sec. 17, SWNE; sec. 33, NWSE,
T28S R63E, sec. 2, SENW; sec. 11, NWNW, SWNW, sec. 14, lot 5;	T25S R64E, sec. 17, SESE, SWNE, sec. 20, NENE, sec. 21, SWNW, NWSW;
T29S R63E, sec. 11, NWNE; sec. 14, NESE, SENE, sec. 25, SWNW;	T24S R64E, sec. 31, lot 8;
	T24S 63E, sec. 28, SESE, sec. 33, NENE, SENE;
	T25S R63E, sec. 4, SWSE;
	T32S R64E, sec. 11, SENE, sec. 12, SWNW, SENW, NWSE;
	T32S R65E, sec. 7, lot 3 and 4, SESW, SWSE,

T30S R63E,
sec. 12, SENE;

sec. 8, SWSW, NESW, NWSE, NESE,
sec. 9, NESE;

Parcel Number(s):

- BLM: 21200001017; 21200002002; 21200002004; 22700002019; 23300001003; 23300001013; 23300001014; 23300002005.
- Local Government: 22700001003; 22700001017.
- NDOT: 00300099005; 00400099001; 00400099002; 03200099017; 03300099001; 05600099001; 05700099006; 20700099002; 20800099001; 21300099001; 23300099001; 23300099002; 24007099001; 24302099001; 24311099001; 24314099001; 25011099001; 25014099001; 25025099001; 25412099001; 25518099001; 25531899001; 26006099001; 26017099001; 26020099001; 26029099001; 26032599001; 26032699001; 26032799001; 26032899001; 26200099001; 26300099001; 0450099003; 06604099001; 06609099001; 06616099001; 06621099001; 06620099001; 06629000001; 08420099001; 08429099001.

Current Land Use and Zoning: Rural Open Lands & Road Frontage

Latitude and Longitude: Locations of the 98 culverts to be evaluated.

#	Lat	Long	#	Lat	Long
1	35.28481937	-114.8754213	50	35.18921892	-114.8526345
2	35.16932346	-114.7728271	51	35.17483656	-114.7898264
3	35.60060525	-114.9166953	52	35.77143305	-114.8533357
4	35.76106021	-114.849445	53	35.63998768	-114.9411936
5	36.56567031	-114.9271232	54	35.17356582	-114.730398
6	35.17102433	-114.7565541	55	35.60971713	-114.9197154
7	35.16992709	-114.7620516	56	35.62313176	-114.9291831
8	35.24938632	-114.8669834	57	35.53909153	-114.914218
9	35.17728423	-114.8496546	58	35.76250564	-114.850125
10	35.50308723	-114.9163293	59	35.24142	-114.8651042
11	35.18989757	-114.8385933	60	36.55324363	-114.9314324
12	35.75646638	-114.8466159	61	35.44032418	-114.9125509
13	35.18845106	-114.8313071	62	35.18347763	-114.8511825
14	35.54900709	-114.9136633	63	36.54742898	-114.933453
15	36.54134537	-114.9355586	64	35.17323517	-114.7850719
16	36.58325718	-114.9210201	65	35.79505746	-114.9444907
17	35.76692391	-114.8517093	66	35.17203814	-114.751432
18	35.18462418	-114.8190115	67	35.58899438	-114.9156498
19	35.75488004	-114.8456192	68	35.80962226	-114.8835926
20	35.18806034	-114.8296264	69	35.21841606	-114.8596211
21	36.45201467	-114.9592397	70	35.53007721	-114.9147602
22	35.17606172	-114.8493465	71	36.4485214	-114.9600007
23	35.82444319	-114.9381102	72	35.39530668	-114.9017779
24	35.81704276	-114.9397072	73	35.80945209	-114.8831434
25	35.52638341	-114.9148889	74	35.68632549	-114.9604227
26	35.76491908	-114.8510001	75	35.2467792	-114.8663703

#	Lat	Long	#	Lat	Long
27	36.58082935	-114.9218675	76	35.28113498	-114.8745501
28	35.58475925	-114.9152299	77	35.20719901	-114.856939
29	35.17750807	-114.797912	78	35.60627391	-114.9181709
30	35.82171316	-114.9387121	79	35.20992448	-114.8576143
31	35.17157532	-114.7536954	80	35.2627394	-114.8701616
32	35.1708699	-114.7779998	81	35.22650057	-114.8615511
33	35.19659679	-114.8543622	82	35.17126268	-114.7792627
34	35.16903138	-114.767247	83	35.17944107	-114.8035804
35	35.61824301	-114.9258757	84	35.21544672	-114.8589192
36	35.35206806	-114.8912335	85	35.22920722	-114.8621832
37	36.5294379	-114.9396836	86	36.52335413	-114.9417881
38	35.17035554	-114.7764988	87	35.2044091	-114.8561886
39	35.17696312	-114.7962029	88	35.27931242	-114.8739491
40	35.23458505	-114.8634815	89	35.18376733	-114.8164869
41	35.61225483	-114.9215484	90	35.71580137	-114.9613849
42	35.17295259	-114.7467956	91	35.19929407	-114.8549722
43	35.16897462	-114.7700371	92	35.18207169	-114.8114484
44	35.55620257	-114.9132451	93	35.27689822	-114.8735395
45	35.17061284	-114.7586733	94	35.1855394	-114.8217762
46	35.32833607	-114.8858001	95	35.42259987	-114.9083168
47	36.51066695	-114.9461886	96	35.75737865	-114.8472217
48	35.20199155	-114.8555932	97	35.18091787	-114.8079657
49	35.41802443	-114.9069924	98	35.27516003	-114.8731233

Congressional District(s): NV District 1st, and 3rd

F. PROJECT TIMEFRAME

Project will be completed within 5 years from execution date of the SNPLMA federal award. Below is a schedule by each year of the federal award that generally outlines major milestones and nomination deliverables planned for project implementation and completion:

Year 1: SNPLMA Cooperative Agreement and Contract Development

- Request to initiate, develop project workplan; pre-work site visit with SNPLMA Program Manager.
- Respond to the Notice of Intent to Award by federal financial assistance application submittal.
- Request and receive SNPLMA notice to proceed and federal award (cooperative agreement).
- Develop scope of work for culvert assessment surveys; solicit proposals.
- Develop scope of work for development of the Fire Management Plan; solicit proposals.

Year 2: Perform Surveys, Fire Management Modeling, and Develop Fencing Contracts.

- Award contract for culvert assessment surveys.
- Survey existing culverts; prioritize culverts according to suitability and habitat value.

- Coordinate with BLM and NDOT on any required environmental review and Section 106 compliance; up to 40 sites will be selected for environmental review to provide backup sites should there be an issue identified with any priority sites.
- Award Fire Management Plan contract.
- Begin fire modeling and start gathering expert opinion.
- Develop construction bid documents for culvert connections; solicit bids; County Board of Commissioners approval to award construction contract.

Year 3: Fence Construction, Monitoring, and Fire Management Planning

- Execute construction contract for culvert connections.
- Pre-construction kick-off meeting, issue administrative notice to proceed.
- Obtain construction permits; site preparation.
- Issue notice to proceed for construction.
- Connect between 20 and 30 culverts to existing tortoise exclusion fencing; install monitoring cameras.
- Continue development of the Fire Management Plan.

Year 4: Complete Fence Constructions and Fire Management Plan.

- Continued administration of the culvert connections construction contract.
- Complete the Fire Management Plan.
- Monitor up to 30 culverts and collect camera data.

Year 5: Analyze Monitoring Data and Project Closeout.

- Finish collection of monitoring data.
- Analyze monitoring data to determine rate of use by desert tortoise.
- Reconcile project file, financial expenditures, and unliquidated obligations.
- Conduct final site inspection with SNPLMA Program Manager.
- Prepare closeout request package and update SMART.
- Submit final financial report (SF-425) and performance narrative via Grant Solutions.
- Submit closeout request package.

G. LEVEL OF PROJECT READINESS FOR IMPLEMENTATION

Is this a shovel-ready project (explain if “Yes”): Yes -or- No

Culvert connections will require additional coordination, environmental review, and permitting. This work will be completed in Year 2 once the culvert surveys and prioritization work are complete and the 20 to 30 priority sites are identified. Ten (10) additional sites will be selected as backup sites and will also be analyzed. Environmental review requirements will include analysis pursuant to the NEPA, Section 7 consultation, and Section 106 consultation. The costs of these reviews have been incorporated into the overall project cost estimate. All culvert connections will occur in existing public rights-of-way that have been previously disturbed.

Have you applied, received, or is there the opportunity to obtain funding from another source for this project? Please list the additional funding opportunities received or applied for and indicate whether it is federal or nonfederal funding.

H. FUTURE OPERATION AND MAINTENANCE

The DCP will enter into an interlocal agreement with NDOT for the purposes of carrying out the culvert connections portion of this project. This interlocal agreement will address access, ownership, and long-term maintenance responsibilities. Once all construction activities are complete, ownership of all newly constructed features will be transferred to NDOT.

This project may result in reducing tortoise fence maintenance costs over time. The key maintenance costs associated with tortoise fencing is the repair of fencing following high-flow storm events. This project will remove the portion of fencing that most often gets washed out during storm events and move it parallel to the wash, reducing the likelihood for damage. While not the main purpose of this work, it will be a benefit for all parties going forward.

Under a separate agreement, the DCP provides funding for the Road Warriors project, which coordinates fence inspections and maintenance needs for all NDOT-maintained tortoise fencing and associated culverts in Clark County. Road Warriors is a separate, long-term project that is funded with Section 10 funds and revenues from the sale of specialty license plates. Inspections and maintenance of culvert connections completed as part of this project will be incorporated into the monitoring objectives for the Road Warriors project.

I. PROJECT BUDGET

The SNPLMA amount requested for this project is \$948,664.

Summarized below are the estimated project costs. Enclosed at the end of this nomination is the “Project Budget Detail & Narrative” spreadsheet that provides the budget summary and detail breakdown of the estimated project costs by the SF-424A budget cost categories, as applicable.

Budget Cost Categories (SF424A)	SNPLMA Funds	Cost Share Funds
1) Personnel	\$ -	\$ -
2) Fringe Benefits	\$ -	\$ -
3) Travel	\$ -	\$ -
4) Equipment		\$ -
5) Supplies	\$ 24,764	\$ -
6) Contractual	\$ 923,900	\$ -
7) Construction	\$ -	\$ -
8) Other (e.g., training)	\$ -	\$ -
Total Direct Costs (sum of 1 through 8)	\$ 948,664	\$ -
9) Indirect Charges	\$ -	\$ -
TOTAL BUDGET (Direct & Indirect Costs)	\$ 948,664	\$ -

Cost-Benefit Analysis

This project will be completed within the estimated price. The project has been budgeted for 20 to 30 fence attachments. The variable range is due to the uncertainty in which culverts will be completed, as culverts can vary widely in size, shape, distance to the fence, and substrate. We have added many contingencies in the form of evaluating extra culverts both during the survey

period, as well as during the environmental and cultural compliance phase to ensure that we can attach as many culverts as possible with the requested budget. To develop our cost estimate we used currently funded projects to develop a baseline average cost per culvert connection and added 5 percent cost increase per year for 3 years (the typical amount of time that it takes for a SNPLMA-funded project to go from a nomination to implementation).

Partnership and/or Contributed Funds

There are no partnerships or in-kind contributions expected for this project.

J. KEY CONTACTS

Key personnel that will be assisting with the management and oversight of the project:

Program Director:

Kimberley Jenkins, Principal Environmental Specialist

Kimberley.jenkins@clarkcountynv.gov

Phone Number: 702-455-5529

Authorized Officer:

Esther Criss, Senior Management Analyst

Esther.Criss@ClarkCountyNV.gov

Phone number: 702-455-3554

Project Manager:

Scott Cambrin, Senior Biologist

Scott.Cambrin@ClarkCountyNV.gov

Phone Number: 702-455-3859

Budget Officer:

Daniel Hoover, Senior Management Analyst

DHoover@ClarkCountyNV.gov

Phone Number: 702-455-3637

Support Staff:

Sharon McLeish, Administrative Specialist

Sharon.McLeish@ClarkCountyNV.gov

Phone number: 702-455-3536

. ORDERS AND PRIORITIES

A. Executive Orders (EO):

1. ***EO No. 13855: Promoting Active Management of America's Forests, Range Lands to Improve Conditions and Reduce Wildfire Risk***

This project would produce a fire management plan that would provide recommendations for the areas in the county most at risk for fire.

2. ***EO No. 14005: Ensuring the Future is Made in All of America by All of America's Workers***

All work for this project will be performed by American companies. We also make all companies aware that materials purchased for this project should be sourced from other American businesses.

3. ***EO No. 14063: Use of Project Labor Agreements for Federal Construction Projects (applicable to projects estimated at \$35 million or more)***

Not applicable

4. ***EO No. 14072: Strengthening the Nation’s Forests, Communities, and Local Economies***

This project will lead to a stronger biological community through increased connectivity. The project will also put money into the local economy as much of the work will be completed by local companies.

5. ***EO No. 14096: Revitalizing Our Nation’s Commitment to Environmental Justice for All***

Not applicable

B. Secretarial Orders

1. ***SO No. 3347: Conservation Stewardship and Outdoor Recreation.***

Not applicable

2. ***SO No. 3356: Hunting, Fishing, Recreational Shooting, and Wildlife Conservation Opportunities and Coordination with States, Tribes and Territories.***

This project will aid wildlife conservation in the southwest by increasing connectivity.

3. ***SO No. 3362: Improving Habitat Quality in Western Big-Game Winter Range and Migration Corridors.***

Not applicable

4. ***SO No. 3366: Increasing Recreational Opportunities on Lands and Waters Managed by the U.S. Department of the Interior***

Not applicable

5. ***SO No. 3370: Conservation Stewardship and Increasing Public Access to Urban National Wildlife Refuges.***

Not applicable

6. ***SO No. 3372: Reducing Wildfire Risks on Department of the Interior Land Through Active Management.***

This project won’t directly reduce risks but it will provide direction on where the highest risks areas are and the best way those risks can be reduced.

7. ***SO No. 3373: Evaluating Public Access in Bureau of Land Management Public Land Disposal and Exchanges (focus is on Sec. 4.b.(3) Potential increased public recreational access to existing public lands resulting from the proposed land acquired through an exchange (acquisition).***

Not applicable

8. ***SO No. 3376: Increasing Recreational Opportunities through the use of Electric Bikes.***

Not applicable

C. Department of the Interior Priorities:

1. ***Identifying steps to accelerate responsible development of renewable energy on public lands and waters.*** *We are investing in climate research and environmental innovation to incentivize the rapid deployment of clean energy solutions, while reviewing existing programs to restore balance on America's public lands and waters to benefit current and future generations.*
Not applicable
2. ***Strengthening the government-to-government relationship with sovereign Tribal nations.*** *We understand that tribal sovereignty and self-governance, as well as honoring the federal trust responsibility to Tribal Nations, must be the cornerstones of federal Indian policy.*
Not applicable
3. ***Making investments to support the Administration's goal of creating millions of family-supporting and union jobs.*** *This includes establishing a new Climate Conservation Corps Initiative to put a new generation of Americans to work conserving and restoring public lands and waters, increasing reforestation, increasing carbon sequestration in the agricultural sector, protecting biodiversity, improving access to recreation, and addressing the changing climate.*
Not applicable
4. ***Working to conserve at least 30% each of our lands and waters by the year 2030.*** *We will work to protect biodiversity, slow extinction rates, and help leverage natural climate solutions by conserving 30% of America's lands and waters by 2030. This relies on support for local, state, private, and tribally led conservation and restoration efforts that are underway across America.*
This project works to protect biodiversity through increasing connectivity as well as reducing the risk of wildfire in a system that is not equipped to handle it.
5. ***Centering equity and environmental justice.*** *The impacts of the multiple crises in the United States are not evenly distributed in our society. Communities of color, low-income families, and rural and indigenous communities have long suffered disproportionate and cumulative harm from air pollution, water pollution, and toxic sites. At every step of the way, Interior will engage diverse stakeholders across the country, as well as conduct formal consultation with Tribes in recognition of the U.S. government's trust responsibilities.*
Not applicable

D. USDA Forest Service Priorities:

1. ***Controlling the COVID-19 pandemic***
Not applicable
2. ***Providing economic relief***

Not applicable

3. *Tackling climate change*

Not applicable

4. *Advancing racial equity*

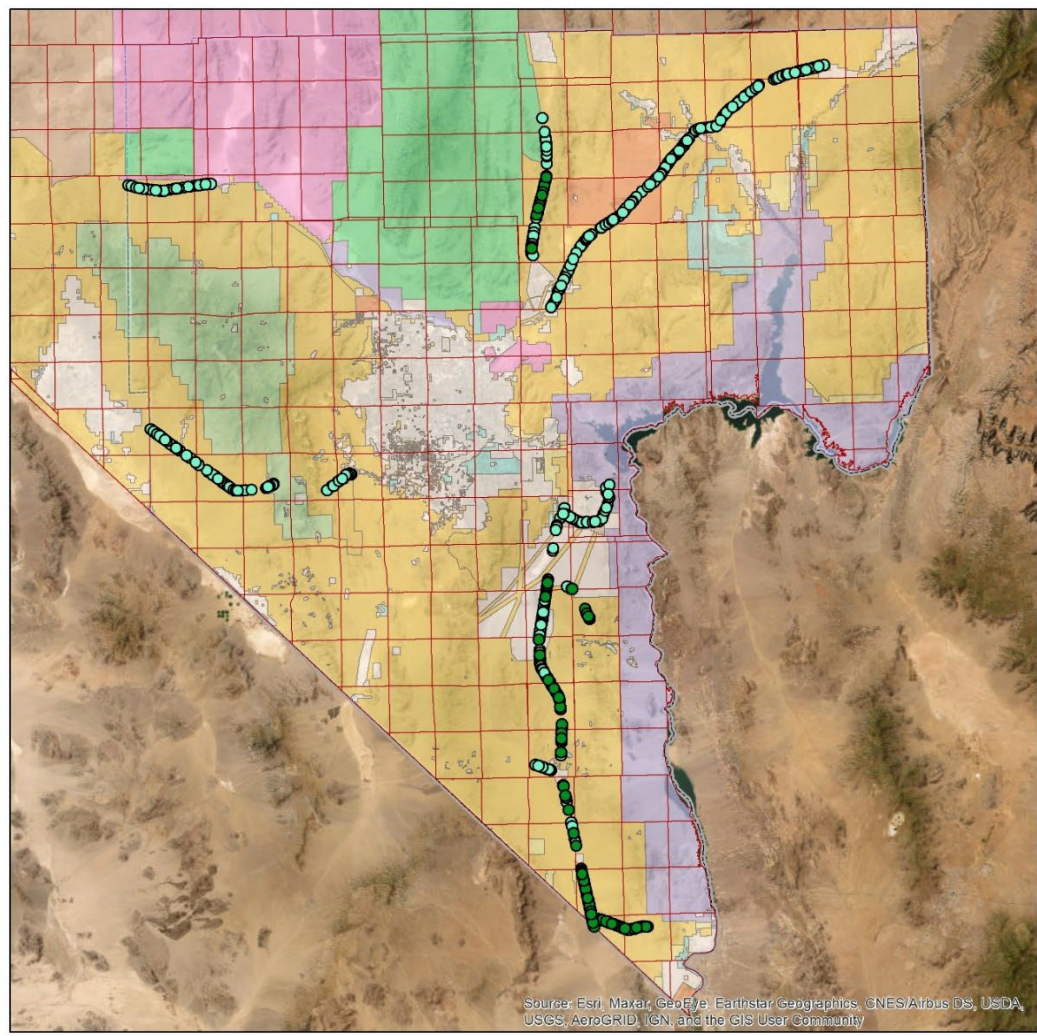
Not applicable

5. *Improving our workforce and work environment*

Not applicable

L. MAPS

Location Map



Source: Esri, Maxar, GeoEye, Earthstar Geographics, CNES Airbus DS, USDA, USGS, AeroGRID, IGN, and the GIS User Community

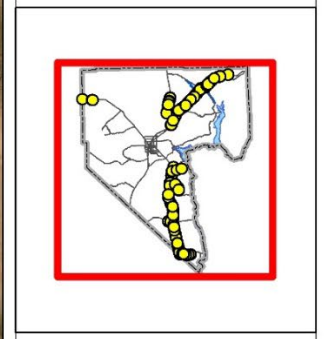
Clark County
Desert Conservation Program
November 1, 2023
SNPLMA Round 20 Proposal
Connectivity Management
Plan Implementation
Overview

Legend

- Culverts for Attachment
- Culverts to Survey
- Township and Range

SNDO Land Status

- Bureau of Indian Affairs
- Bureau of Land Management
- Bureau of Reclamation
- Department of Defense
- Department of Energy
- Fish and Wildlife Service
- Forest Service
- National Park Service
- Nevada State
- Local Government
- Private



0 5 10 20
Miles

N

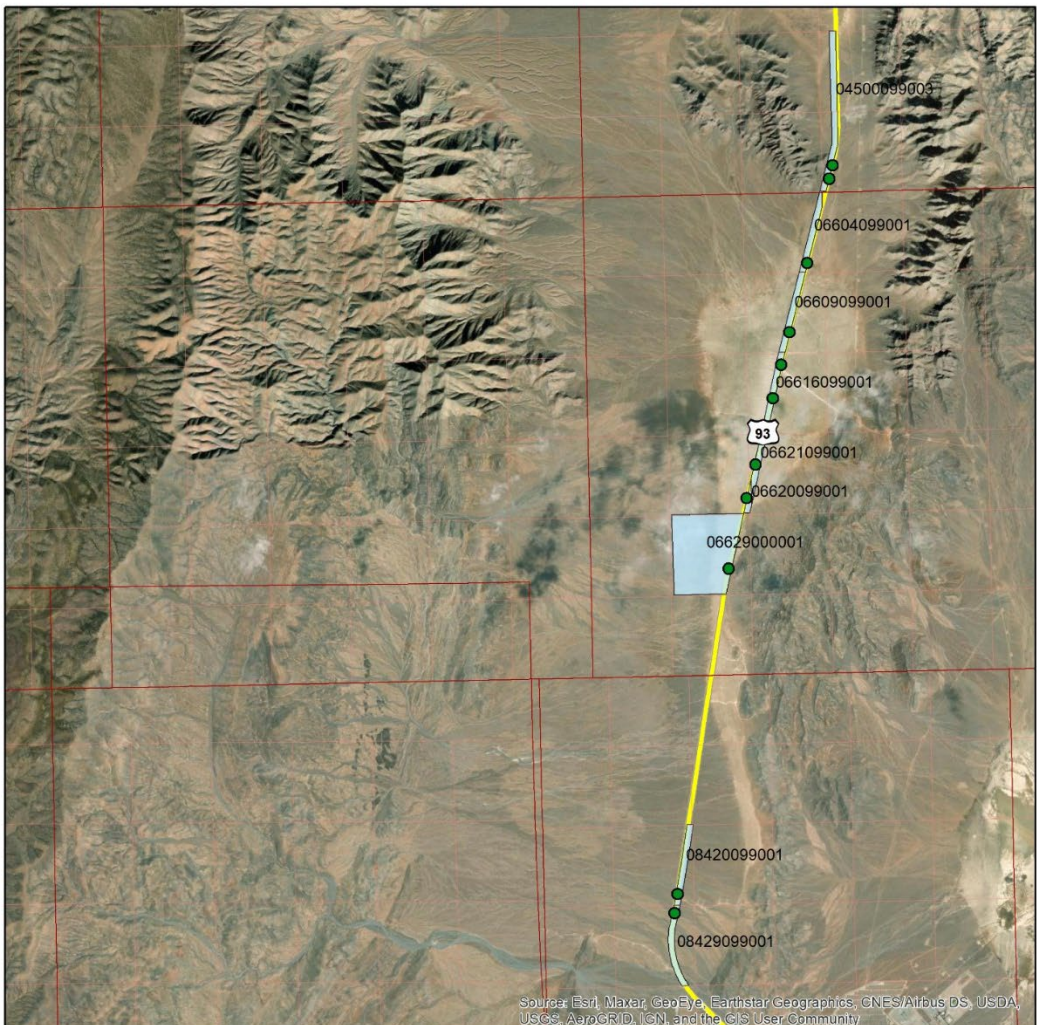
Map Author: Scott Cambrin

Assessor Parcel Map – US-93

Clark County
Desert Conservation Program
November 1, 2023

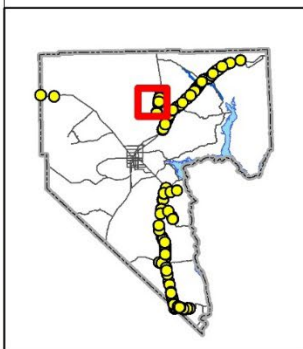
SNPLMA Round 20 Proposal
Connectivity Management
Plan Implementation

Parcel Numbers US 93



Legend

- Culverts for Attachment
- Township and Range
- Section
- Parcels

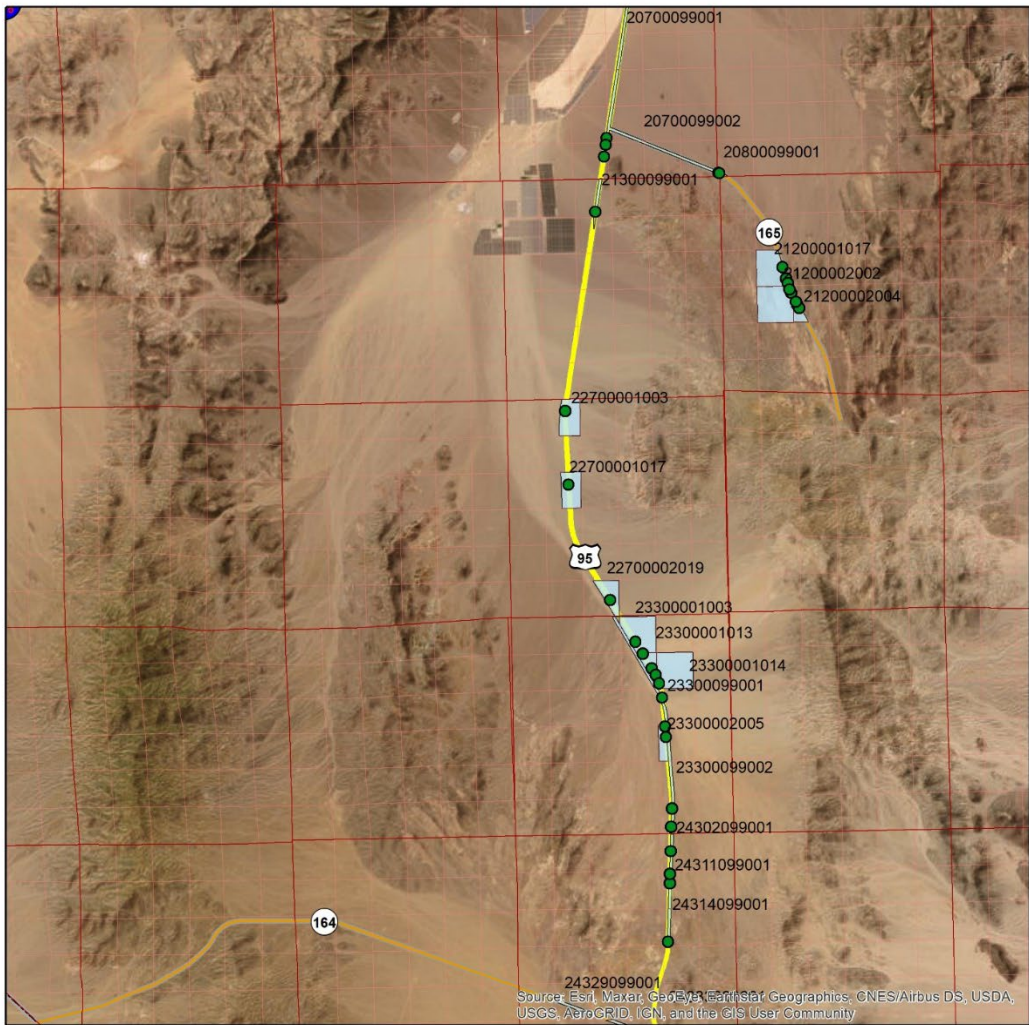


0 0.5 1 2
Miles

N

Map Author: Scott Cambrin

Assessor Parcel Map – US-95-1



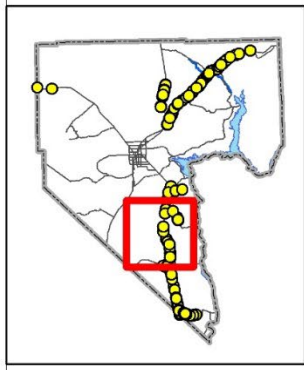
Clark County
Desert Conservation Program
November 1, 2023

SNPLMA Round 20 Proposal
Connectivity Management
Plan Implementation

Parcel Numbers US 95-1

Legend

- Culverts for Attachment
- ▭ Township and Range
- ▭ Section
- ▭ Parcels

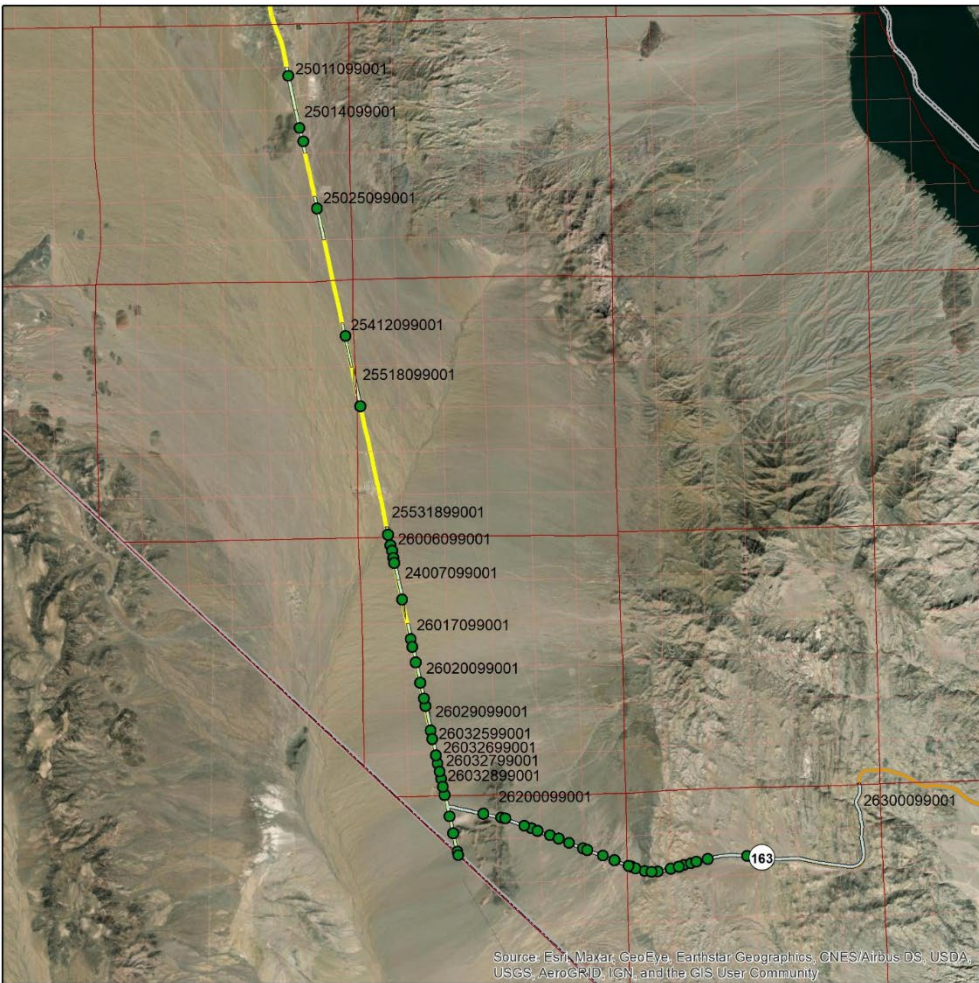


0 15 30 60 Miles

Map Author: Scott Cambrin

Source: Esri, Maxar, GeoEye, Earthstar, GeoGraphics, CNES/Airbus DS, USDA, USGS, AeroGRID, IGN, and the GIS User Community

Assessor Parcel Map – US-95-2

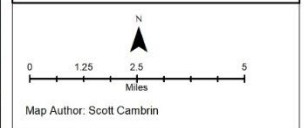
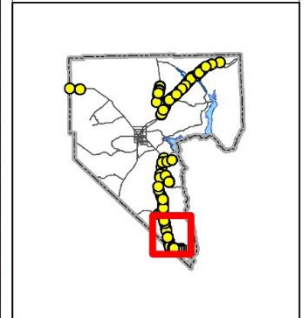


Source: Esri, Maxar, GeoEye, Earthstar Geographics, CNES/Airbus DS, USDA, USGS, AeroGRID, IGN, and the GIS User Community

Clark County
Desert Conservation Program
November 1, 2023
SNPLMA Round 20 Proposal
Connectivity Management
Plan Implementation
Parcel Numbers US 95-2

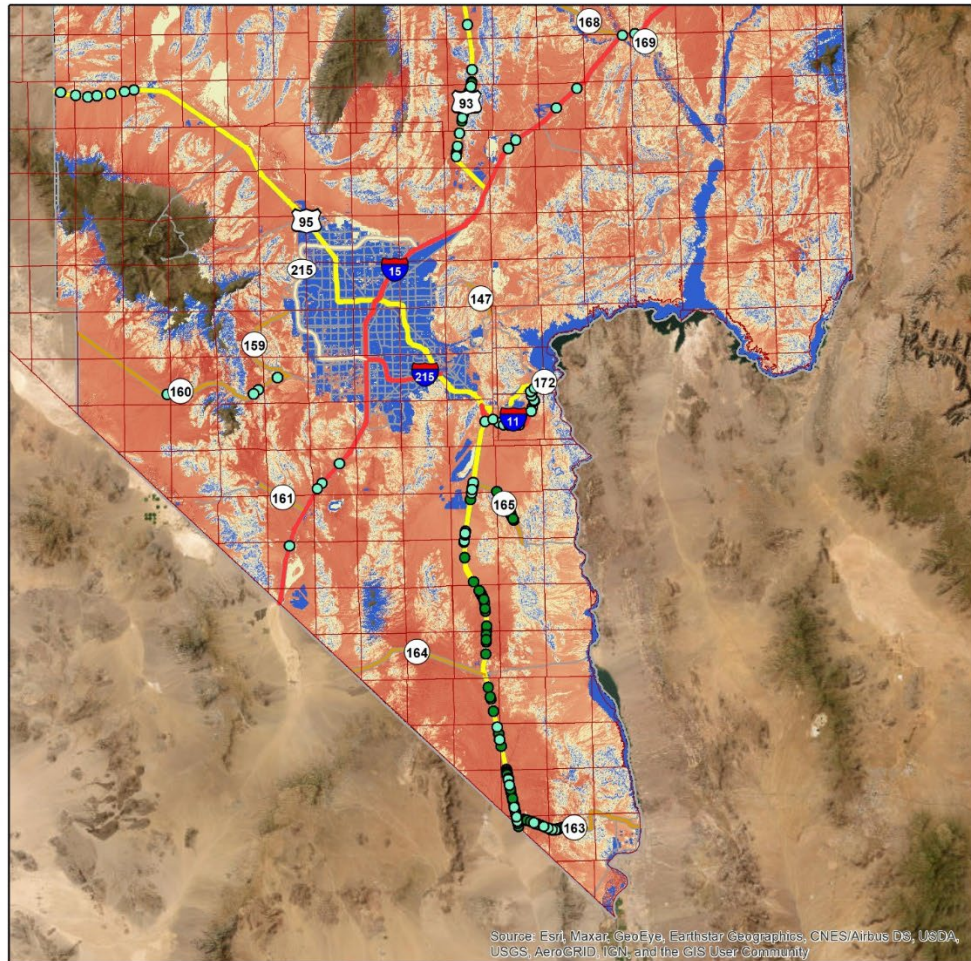
Legend

- Culverts for Attachment
- ▭ Township and Range
- ▭ Section
- ▭ Parcels



Map Author: Scott Cambrin

Strategic Values – Connectivity



Clark County
Desert Conservation Program
November 1, 2023

SNPLMA Round 20 Proposal
Connectivity Management
Plan Implementation

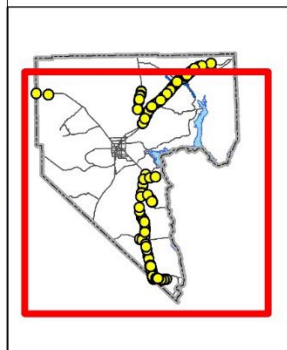
EC Strategic Plan Values

Legend

- Attached Culverts (light green circle)
- Culverts for Attachment (dark green circle)
- Township and Range (white box with red border)

Connectivity Value

- High (red)
- Low (blue)



0 5 10 20 Miles

Map Author: Scott Cambrin

Source: Esri, Maxar, GeoEye, Earthstar Geographics, CNES/Airbus DS, USDA, USGS, AeroGRID, IGN, and the GIS User Community

Appendix 1. Latitude and Longitude for each surveyed culvert

Latitude	Longitude	Latitude	Longitude
35.80793636660	-114.94170205800	35.47114956160	-114.94215800900
36.60682874170	-114.91957127600	35.17328931720	-114.74502970700
35.17367845410	-114.74269139300	35.62313175570	-114.92918306800
36.51595323840	-114.94435152400	36.57945647830	-115.89296751800
36.56806055590	-115.81952882900	36.00456868480	-115.65472406400
36.47228439610	-114.82103762100	36.76261657290	-114.35827368000
36.44354174360	-114.96081163200	36.39298437030	-114.88414779300
35.16917990420	-114.76601334500	36.10178372600	-115.81576839400
36.57102364290	-115.84781445200	36.01609355810	-115.56633229200
35.16955128170	-114.77394069900	36.65152184450	-114.92090833400
36.77414737610	-114.29356462900	35.26019555950	-114.86955771100
36.53552161830	-114.93757870100	36.70114052040	-114.49215574700
35.26782725990	-114.87138039800	36.63916909860	-114.59783693300
36.57974383490	-115.71081109500	36.62301603310	-114.91953872200
36.76424084310	-114.34905546100	35.53909153310	-114.91421800900
35.26559114820	-114.87084535300	35.76250563610	-114.85012497100
36.57341267210	-115.76588020400	36.62379492110	-114.61359915900
35.21262233450	-114.85825741600	35.24142000240	-114.86510424900
36.69174346840	-114.92789480400	36.45116095410	-114.84456747700
36.56657198320	-114.67556229100	36.66656512680	-114.92350202400
36.56038440010	-114.92896271900	36.55324362630	-114.93143240400
36.56941310260	-115.79791705000	35.47182651850	-114.94432271700
36.00970186310	-115.43164821500	36.63136211130	-114.91952677200
35.82765788400	-114.93738496600	35.44032418230	-114.91255086200
36.57689706280	-115.73368092200	35.18347762770	-114.85118245800
36.45676026140	-114.83869970400	36.50058477350	-114.76496076300
35.17207402200	-114.78172185100	36.54742898470	-114.93345296900
36.00273419300	-115.44278086100	36.72246307710	-114.45773086600
36.00421966110	-115.64374593600	36.01522048370	-115.56795708900
36.77659908350	-114.27976628300	36.73163180040	-114.44107025300
35.18699096210	-114.85205627100	36.01765482300	-115.67788286100
35.17399592450	-114.73459101400	35.17323517060	-114.78507186400
36.66751619010	-114.53665496300	36.57104744960	-115.78484958200
35.25521677880	-114.86839118800	36.64213046940	-114.59452396400
35.18303350470	-114.81428850200	36.01391779120	-115.67174239400
35.17559944570	-114.79211140800	36.11273315580	-115.83373633400
36.57655298480	-115.88321819400	36.66931347190	-114.52684197000
36.57520316150	-114.92382870300	36.01151244740	-115.66783255800
36.46265601180	-114.95691872900	36.01486154230	-115.56885129400
36.48709865740	-114.95154396900	35.79505745520	-114.94449073300
35.94253506880	-114.90663466600	35.80036218130	-114.94315898000
35.17406894910	-114.73801446900	35.17203813730	-114.75143201200
36.73440096000	-114.43657789800	36.41473134570	-114.87082249900
35.93992673530	-114.87567763000	36.04120589760	-115.71636232700
35.93520552950	-114.86412157000	36.10380868200	-115.81907076800
35.93382383980	-114.85135709200	36.66714331410	-114.54041463300
35.93430734650	-114.82764701400	36.43792835550	-114.85652374000
35.96657003820	-114.79660337500	35.24455188810	-114.86582431900
35.97774413360	-114.79251109500	35.58899437600	-114.91564982000
35.97887341380	-114.79167007300	36.10922402400	-115.82796657700
35.98044133910	-114.79311243900	36.06702011960	-115.75865989600

Latitude	Longitude	Latitude	Longitude
35.98972616430	-114.79804451000	35.80962226260	-114.88359261600
35.94621568700	-114.88827970500	36.38864228150	-114.88682956600
36.66604732800	-114.55370643600	36.63779768050	-114.91953261600
36.60405466750	-114.63562566700	36.76338425310	-114.35389016400
36.39467833650	-114.88309845800	36.53209928030	-114.72328934800
36.55939777360	-114.68575405700	36.08600147250	-115.78993775100
36.77639159730	-114.28093869500	35.21841605890	-114.85962114500
36.08079307420	-115.78127719300	36.10126049040	-115.81482088500
35.28481937460	-114.87542127900	36.64724459110	-114.58848171600
36.11044285140	-115.82999273800	36.76983819500	-114.31775516800
36.62966802280	-114.91954996400	35.53007720880	-114.91476021000
36.61942906610	-114.91955687900	36.44852140330	-114.96000069100
36.57070546890	-114.92537946100	36.57936280880	-115.71392460400
36.36633397380	-114.90063993300	36.58694760080	-114.65062080600
36.57410514550	-114.66487731700	36.59446749970	-114.64484887400
36.74026104780	-114.42707756900	36.52821802900	-114.72724486600
35.75342982900	-114.84467406500	36.00570598180	-115.65806659400
36.11397892990	-115.83576227700	36.64343549570	-114.59309653400
35.16932346050	-114.77282709800	36.03509524580	-115.70644982400
35.92912717930	-114.91366036600	35.39530668350	-114.90177790900
35.81181020240	-114.88959911100	35.81037773000	-114.88554240600
36.71546789590	-114.46906620600	35.80945209310	-114.88314341000
36.50544581570	-114.75552089100	35.75825389450	-114.84777320000
36.57833440110	-115.72223480500	35.93855771470	-114.87268824200
36.41064790540	-114.87333149700	35.93473695650	-114.86210584000
35.81262545890	-114.89187943800	35.93394874090	-114.85682905800
36.48359472540	-114.79838658800	35.93395849370	-114.84479190300
35.60060525390	-114.91669525000	35.68632548920	-114.96042271200
35.76106020570	-114.84944500200	36.55912188430	-114.68639910000
36.53393613350	-114.72036515600	36.60971766010	-114.63033259300
36.63491893970	-114.60115606900	35.71826560470	-114.96104575500
36.48786480960	-114.78998342000	36.03251673320	-115.38667943400
36.39968908440	-114.88000785100	35.72870259690	-114.95881182800
36.56567030520	-114.92712317200	35.81442063940	-114.94029511900
35.17102432960	-114.75655407400	35.19445149550	-114.85386955600
36.65040043210	-114.92069240500	35.73631901040	-114.95716899700
36.57346830010	-114.66687432600	35.24677920240	-114.86637033800
36.75897426370	-114.37244388600	36.77570725790	-114.28490618100
36.77835914630	-114.27005833100	35.28113498380	-114.87455009700
36.11830282090	-115.84285411500	35.20719901160	-114.85693904200
36.02222133490	-115.40958304200	36.34331559930	-114.91208788900
36.43825767530	-114.95963361300	36.76846051080	-114.32060358700
36.57994553540	-115.70364331000	35.22110489070	-114.86026459400
36.75829575960	-114.37477429600	35.60627390970	-114.91817089500
36.57879844660	-115.71843821800	35.20992448230	-114.85761432300
35.67736158550	-114.95968971800	35.26273939790	-114.87016157700
35.88201576460	-114.92544206400	35.75645566560	-114.95282772300
36.53636829010	-114.71746799500	35.76189797340	-114.95162648700
36.49155165800	-114.78272339400	36.77424385650	-114.28830732900
36.08655093250	-115.79078454900	35.48146423820	-114.97528976800
35.16992709390	-114.76205157400	36.43685685720	-114.95888943800
36.10574253700	-115.82228579500	35.22650056700	-114.86155113300

Latitude	Longitude	Latitude	Longitude
36.12149095990	-115.84812985600	35.75792868810	-114.95251349000
35.63032965310	-114.93415386200	35.17126267590	-114.77926268100
35.88607478440	-114.92454967900	35.77172399940	-114.94952719200
36.08936503860	-115.79539534300	35.75910530280	-114.95226214000
36.60516589610	-114.63575941300	35.17944107200	-114.80358038600
36.71663589720	-114.46720317600	35.21544672340	-114.85891919300
35.24938632420	-114.86698335800	35.22920721740	-114.86218324100
35.17728422510	-114.84965463700	36.52335412550	-114.94178814500
35.50308723320	-114.91632928500	36.46232402220	-114.83287669600
35.18989756690	-114.83859328000	36.67697720660	-114.51444551500
36.00980868880	-115.58061530500	35.20440910060	-114.85618861200
36.49986929870	-114.76622051500	36.74406944330	-114.42232546000
36.55060557010	-114.70088483600	36.46455308180	-114.83054938800
36.57224221180	-114.66869906400	35.27931241530	-114.87394911400
36.76747047730	-114.33107782100	36.62507340660	-114.61218440300
35.17320472140	-114.72748761700	36.77214325860	-114.30491561600
36.02080335560	-115.68300163700	35.18376732780	-114.81648692900
36.10796889000	-115.82591879800	36.68718312810	-114.50816370300
36.64369388370	-114.59161218500	35.71580136930	-114.96138489600
35.75646637570	-114.84661593200	35.19929407090	-114.85497219900
35.18845106480	-114.83130708100	36.46772896560	-114.82725814200
36.64629085350	-114.58945096500	35.18207168500	-114.81144838600
36.37002562150	-114.89836734800	35.27689822340	-114.87353952200
36.60186805600	-114.63807338800	35.23188702640	-114.86282707800
36.00796828480	-115.66205593400	36.66545483950	-114.55996765700
35.54900709180	-114.91366330800	36.57129823290	-115.78292341400
36.57995571720	-115.70790156100	35.18553939550	-114.82177620500
36.54134536970	-114.93555855600	35.77529848090	-114.94874955500
36.60242702930	-114.63853700300	36.45696269680	-114.95816162500
36.51568196940	-114.74248476500	36.37755172890	-114.89375077700
36.60132946050	-114.63863754300	35.42259987250	-114.90831678200
36.58325718100	-114.92102009400	36.49739294840	-114.77115892600
36.59226500920	-114.64650294800	35.75737865100	-114.84722170800
35.47544945260	-114.95593425500	36.51241340870	-114.74646534700
36.60146213460	-114.63851053800	35.17811627050	-114.79963036600
35.76692390790	-114.85170933300	35.18091786720	-114.80796566100
35.18462418270	-114.81901153000	36.00897369550	-115.58242775900
36.00480452510	-115.63174214400	35.27331313260	-114.87267688700
36.61959877330	-114.61829029400	36.69694210690	-114.49650025900
36.44497349940	-114.96072952500	35.27516003340	-114.87312326400
35.75488003630	-114.84561916900	35.94952803840	-114.89672771800
36.77227611770	-114.29925390100	35.94591820350	-114.88776660800
36.76877398140	-114.32371793100	35.94526998320	-114.88627625800
35.18806034390	-114.82962635800	35.93423913440	-114.83135083200
36.52037061760	-114.73687683100	35.93438840650	-114.82316698200
36.45201466930	-114.95923974400	35.94257123390	-114.80919731200
36.60175361860	-114.63821101600	35.94855408660	-114.80610547100
35.17606172310	-114.84934647500	36.74406944330	-114.42232546000
35.78623471930	-114.94621156200	36.53049142190	-114.72452031400
36.45912417530	-114.83634667100	35.34168850590	-114.88897285000
35.47525915270	-114.95534396600	36.66698789400	-114.54205294000
35.81112649030	-114.88762521200	36.66541603000	-114.55851454700

Latitude	Longitude	Latitude	Longitude
36.02507207290	-115.69000000300	36.69104737730	-114.50376406000
36.01913239800	-115.68025515900	36.04322473570	-115.71968192700
36.76831087690	-114.32636640900	35.35561698720	-114.89209855100
36.72811580430	-114.44856518300	36.05430755470	-115.73783206800
35.72685259760	-114.95922386500	36.73805807320	-114.43064474300
35.47447691220	-114.95280704600	35.77813654740	-114.94813458000
35.82444319380	-114.93811015700	36.49902766600	-114.76796390300
36.57605139020	-115.74064647600	36.50529166600	-114.94756993300
35.96063894610	-114.89704283200	36.46576516690	-114.82929927000
36.66609049910	-114.55142286400	35.41162860850	-114.90570435900
35.47042356270	-114.93976317400	36.42723935030	-114.86310834700
36.57979368750	-115.70128751700	35.64519914080	-114.94494732100
36.48445587550	-114.79669912900	36.66231244340	-114.57201437100
35.72101443120	-114.96047824900	35.64796308570	-114.94685341900
36.66166417720	-114.57292967800	35.76942485330	-114.95002867300
35.17425525950	-114.78810739700	35.69550734800	-114.96071928900
36.63257891620	-114.91952759700	36.69403744640	-114.50023163800
36.01350897020	-115.57184953000	36.76543581340	-114.33760026700
35.81704275590	-114.93970718800	35.33418931970	-114.88697873700
36.61727134550	-114.62088868700	35.25765171850	-114.86895387800
36.02772730160	-115.40061620900	35.27150285350	-114.87226254800
35.68818751850	-114.96018744800	35.28390522860	-114.87521429000
36.66876947220	-114.52972341700	36.46890152140	-114.82581931400
36.11203684600	-115.83259114800	36.34256912240	-114.91269832700
36.70590972390	-114.48284489900	36.05876582470	-115.74515532400
36.65956075150	-114.57541200900	36.70453334760	-114.48509477500
36.76479430740	-114.34115080700	36.77616066830	-114.28226876600
36.75399184810	-114.38681506700	36.66736681020	-114.53771134500
35.47230314410	-114.94584237200	36.00552907910	-115.61631845200
36.59907685230	-114.64094178800	35.94931006850	-114.89509277800
36.33957416970	-114.91514019800	35.94834548090	-114.89303424400
35.52638340820	-114.91488889600	35.94774412540	-114.89164233000
36.01879919790	-115.41734182800	35.94719954150	-114.89040412800
36.60068543050	-114.63933904100	35.94665689480	-114.88927674600
35.76491907870	-114.85100011400	35.94635668550	-114.88860851700
36.75981821880	-114.36944695700	35.94236392130	-114.88096639900
36.57496084860	-115.75094637400	35.94139831850	-114.87886390600
36.49508067440	-114.77572394800	35.93541653650	-114.81724218400
36.11593037660	-115.83897786800	35.93951396010	-114.81108848200
36.59830559780	-114.64159123200	35.95465233600	-114.80292125100
36.34507648730	-114.91072611600	36.66489859310	-114.56581372300
36.58082935120	-114.92186752400	35.93429591260	-114.82701555700
36.47863109690	-114.95341879900	35.69123706030	-114.96034182900
35.25198462600	-114.86760763400	35.52227029610	-114.91527100200
36.44877244800	-114.84706572600	35.65198045970	-114.94984310600
35.58475925250	-114.91522992500	35.76447589290	-114.95108477700
36.62162638140	-114.61602522900	36.03265175430	-115.39001735600
35.17750807200	-114.79791196700	35.63688553320	-114.93902054000
36.57753740210	-115.72862979800	36.03260080070	-115.39495726600
35.82171315720	-114.93871206600	36.57170732680	-115.77709437000
35.17157532100	-114.75369541700	35.49873404160	-114.91690474900
35.17086989610	-114.77799982700	36.52625814920	-114.72987075000

Latitude	Longitude	Latitude	Longitude
36.39792367120	-114.88109271400	35.67578038260	-114.96000618300
35.19659678720	-114.85436222900	36.57267205980	-115.86364883400
36.63934762250	-114.91951329000	35.67917214880	-114.96014079400
36.01530449020	-115.67403831200	35.68120198860	-114.96023274500
36.41794980110	-114.86883872900	36.57745582600	-115.88625646100
35.16903137730	-114.76724700200	35.74987200420	-114.95423493300
36.49258568330	-114.78065112200	36.57013929510	-115.83935640100
36.60355211430	-114.63618875600	36.74184607440	-114.42452747800
35.61824301310	-114.92587569500	35.61719272890	-114.92508587100
36.45241683630	-114.84323848700	35.75105782430	-114.95399446300
36.77130271600	-114.30958267400	35.64625907200	-114.94578159500
35.35206805780	-114.89123349600	35.75357212540	-114.95342137300
35.47843376600	-114.96555712100	36.76993297590	-114.31237500400
36.46827703600	-114.95566637000	36.57415784240	-115.87488161600
36.08375456900	-115.78616270500	36.58273551990	-114.65412350500
36.51963151660	-114.73782519000	35.44163645880	-114.91284744500
36.52943789860	-114.93968359900	36.58149096650	-114.65545751300
36.39084447250	-114.88546557800	35.68632548920	-114.96042271200
36.70820137020	-114.47913231300	35.22380234220	-114.86088588300
35.17388877580	-114.74091794200	36.02394388250	-115.40556445000
36.03049695100	-115.69890016600	36.56775496040	-115.81235891500
35.17035553560	-114.77649876500	36.43490863430	-114.95723378000
36.64827589500	-114.92032449500	35.94964628280	-114.89576010200
36.63059182720	-114.60603154700	35.94869071610	-114.89370131000
35.17696312310	-114.79620286500	35.94398460790	-114.88443711000
36.61241372430	-114.62767872900	35.73202620620	-114.95811891800
36.64550937330	-114.91983965200	35.36466403920	-114.89446054500
36.08840194220	-115.79375509300	35.95998163520	-114.79959155000
36.75540568550	-114.38185034400	35.99664425910	-114.79976002100
36.65597890160	-114.92168337900	35.99733925150	-114.79931919500
35.19097596790	-114.85309344300	36.00295161990	-114.79129807900
35.23458504800	-114.86348146300	36.66986221990	-114.52375895200
35.23728248470	-114.86410293800	36.02055806500	-115.41332284900
36.71154677290	-114.47369476100	35.67218118140	-114.95986581000
35.37254003710	-114.89635812400	36.56794475130	-115.80969627400
36.60379899850	-114.63591293600	35.76701776560	-114.95054395300
36.09385594470	-115.80272459900	35.66260667490	-114.95714910400
36.01136911620	-115.57688129300	35.79171635120	-114.94520746600
36.03240581250	-115.70200979500	36.00425368640	-115.65316501800
36.63343883790	-114.60284582800	35.67433717290	-114.95995454200
35.64355177640	-114.94349863800	36.01193969150	-115.57558390100
35.18070746110	-114.85053070400	35.63302563870	-114.93629288800
36.62949808180	-114.60721715400	36.35096819580	-114.90591096900
36.72411655180	-114.45497822300	35.74807553310	-114.95461266500
36.76598693930	-114.33444484500	35.67013125870	-114.95965285800
36.61828507140	-114.61975065100	36.33782359250	-114.91657948300
35.61225483440	-114.92154842500	35.47668894200	-114.95992542600
35.17295258750	-114.74679564600	35.47958461440	-114.96912099900
36.47174360530	-114.95492801400	35.61479308500	-114.92341465900
36.01041023510	-115.66599809000	35.65579183320	-114.95238548800
36.08423149500	-115.78696614200	35.78908479690	-114.94577310300
35.16897461720	-114.77003709400	35.75254516670	-114.84410077500

Latitude	Longitude	Latitude	Longitude
35.55620256900	-114.91324513200	36.07152313680	-115.76607364100
35.17061283640	-114.75867329200	36.01132720750	-115.42772143300
36.76169191480	-114.36249448000	36.57082995730	-115.78650700000
36.48957761730	-114.78659720200	35.64914915440	-114.94768451800
36.00866662490	-115.58314337200	36.56854442810	-114.67272096600
36.56449936190	-114.68020530300	36.03034912090	-115.39915371500
35.92395480930	-114.91635633700	35.66756173410	-114.95909964200
35.32833606510	-114.88580009400	36.35598964550	-114.90339171500
35.26961108930	-114.87182837300	36.68010095070	-114.51297987200
36.51066695180	-114.94618856800	36.66538157040	-114.56035033600
36.75672814920	-114.37724695700	36.57158069400	-115.78057205400
36.00501886490	-115.65628082800	35.64169417770	-114.94240879300
35.78047789930	-114.94746595400	36.56360643860	-114.68156157400
35.20199154640	-114.85559318200	35.63524301960	-114.93785910100
35.41802443160	-114.90699244800	35.74561490910	-114.95516218000
36.40606524480	-114.87615488200	36.60939316260	-114.63123686600
36.02333696110	-115.68714331600	35.81341422480	-114.89419371300
36.57466597510	-115.75377871600	36.01965677750	-115.41538273400
36.37314651040	-114.89644429200	35.92002973210	-114.91768942600
36.71286248910	-114.47156959600	36.57209675100	-115.85815866500
35.18921891530	-114.85263453600	36.57729580330	-114.66074712700
36.59577281190	-114.64385911100	35.65715113570	-114.95333382300
35.68397746870	-114.96017312100	35.66515065420	-114.95832149100
35.92606329540	-114.91527030400	35.65039266810	-114.94871297400
35.47298942240	-114.94802894600	36.02747732070	-115.69396667500
35.17483656100	-114.78982638100	35.66097595350	-114.95614128600
36.76058650180	-114.36669896400	35.63607338280	-114.93844510200
36.11722210140	-115.84110330100	35.62023202160	-114.92725955800
36.70191889260	-114.48932116800	35.65902403550	-114.95479928100
36.61463478800	-114.62516223300	36.57317744890	-115.86844718400
36.49347276190	-114.77891788000	36.02339379770	-115.40690721400
35.77143305100	-114.85333565900	36.00399557450	-115.64945259000
35.63998767510	-114.94119364600	36.01030825200	-115.57940800600
36.54044821120	-114.71355038200	35.72358322740	-114.95992634500
35.17356581700	-114.73039798300	35.65359583760	-114.95100571300
36.02875327250	-115.69606542700	35.62695745790	-114.93201031400
36.09880515710	-115.81085869800	36.56910544560	-115.82950385900
36.63231923100	-114.60408823900	35.74291155860	-114.95575103800
36.59178589020	-114.64688633700	35.95048579970	-114.89942950500
35.60971712950	-114.91971540800	35.98500766540	-114.79487064800

M. PHOTOS



Photo 1. Small concrete box culvert with desert tortoise fencing attached.



Photo 2. Corrugated metal culvert with no fencing attached.



Photo 3. Corrugated metal culvert with fencing attached.



Photo 4. A large concrete box culvert with fence attached.



Photo 5. This photo depicts how cameras will be placed inside the culverts.

N. PERFORMANCE MEASURES (PM)

SNPLMA FY2020-FY2024 STRATEGIC PLAN GOAL 1: Sustain the Quality of the Outdoor Environment by Conserving, Preserving, and Restoring Natural and Cultural Resources		
PM for Habitat Enhancement	Definition of Performance Measure	Quantity
H14 - Number of Threatened and Endangered Species Recovery Actions Implemented	Report the number of individual recovery actions performed for threatened or endangered species recovery as identified in recovery plans, conservation management plans, or land use planning documents. Include surveys, inventories, and monitoring as recovery actions. Note: One distinct action repeated 5 times over the course of the project would report as 1 action, not 5. The same recovery action conducted at distinct sites can be counted once for each site (this does not apply to individual plots within one single project site). The number of acres over which the actions were taken are reported under either H4 or H6. Report each action as one unit.	1; recovery action 5.5 from the desert tortoise recovery plan
H15- Number of Conservation Actions Implemented for Non-Listed Species	Report the number of individual conservation actions for species not listed under the Endangered Species Act. Note: One distinct action repeated 5 times over the course of the project would report as 1 action, not 5. The same conservation action conducted at distinct sites can be counted once for each site (this does not apply to individual plots within one single project site).The number of acres over which the actions were taken are reported under either H4 or H6. Report each action as one unit.	1; reconnecting connectivity for small fauna species.
H16 - Miles of Roads or Trails Decommissioned and/or Rehabilitated	Report the number of miles of roads and/or trails decommissioned and/or rehabilitated within all habitats (urban, upland, riparian, stream, trails in caves, etc.). Closure may include designation, signing, blockage by physical means, obliteration, etc. Report to the nearest whole mile.	
H17 – Miles of Roads or Trails Surveyed, Inventoried, or Monitored	Report the number of miles of roads and/or trails inventoried or monitored. Report to the nearest whole mile or linear foot. Report to the nearest whole mile.	
SNPLMA FY2020-FY2024 STRATEGIC PLAN: Other Performance Measures that Also Support the Three Values for SNPLMA Implementation of Sustainability, Connectivity, and Community		
Other PMs	Definition of Performance Measures	Quantity
O9 – Number of GIS Databases Generated and/or Map Layers Produced	Report the number of GIS databases created and/or the number of map layers produced to identify the location of natural resources within the environment and provide mapping for use in educational programs. Report each database or map layer as one unit.	4
O10 – Number of Volunteers Used	Report the number of volunteers used in educational or interpretive programs and for surveying, monitoring, or restoration activities. Report each volunteer as one unit.	0

O. BLM CONSULTATION LETTER



United States Department of the Interior



BUREAU OF LAND MANAGEMENT

Southern Nevada District Office
4701 N. Torrey Pines Drive
Las Vegas, Nevada 89130
<http://www.blm.gov/nevada>

In Reply Refer To:
2710 (NVS00000)

Ms. Kimberley Jenkins
Principal Environmental Specialist
Desert Conservation Program
Clark County, Department of Environment and Sustainability
4701 West Russel Road
Las Vegas, Nevada 89118
Kimberley.Jenkins@ClarkCountyNV.gov

Dear Ms. Jenkins:

This correspondence acknowledges the participation of Clark County (County) in the Southern Nevada Public Land Management Act (SNPLMA) Round 20 Multi-Species Habitat Conservation Plan (MSHCP) consultation meeting held on October 3, 2023. I would like to thank the County for their continued partnership in the SNPLMA program for the development of MSHCP projects and for participating in Round 20.

The County has met the Bureau of Land Management (BLM) consultation requirement concerning the MSHCP Round 20 project nominations as described below.

Boulder City Conservation Easement Translocation Plan Update – The County proposes to determine the suitability of the Boulder Conservation Easement (BCCE) to accept additional tortoises above the limits identified in the 2014 and 2017 plan. The goal of the project is to develop a revised translocation plan that can be used as a guide for continued translocation of tortoises removed from construction sites to the BCCE. The proposal identifies the potential use of drones for data collection. The BLM does not have any protocols or approval processes required for drone use over BLM managed lands.

Because the proposed project does not involve ground disturbance or encroachments on BLM land, compliance with the National Environmental Policy Act is not required. In addition, per 36 CFR 800.3 (a)(1), this project has no potential to cause adverse effects to historic properties. No further compliance with Section 106 of the National Historic Preservation Act is required.

Connectivity Management Plan Implementation – This proposal is to implement actions identified in the 2022 Clark County Connectivity Management Plan. This includes surveying culverts along highways to determine which are passable by tortoises, attaching tortoise fencing to up to 30 prioritized culverts, begin recording data on how long before tortoises start using culverts, and a developing fire management plan for Clark County that focuses on reducing the risk of wildfire in high value desert tortoise habitat and connectivity corridors. BLM understands that Clark County will coordinate with appropriate federal agencies in the development of the fire management plan.

INTERIOR REGIONS 8 & 10 • LOWER COLORADO BASIN & CALIFORNIA-GREAT BASIN

ARIZONA, CALIFORNIA, NEVADA, OREGON*

* PARTIAL

While the proposed project does include some BLM managed lands, all ground disturbances would be within existing Nevada Department of Transportation (NDOT) rights-of-way. Please include coordination with BLM wildlife biologists during the evaluation and identification of the prioritized culverts.

This project is subject to the requirements of Section 106 of the National Historic Preservation Act. The SNPLMA program will assist with this process including coordination with the State Historic Preservation Office and consultation with federally recognized Indian Tribes.

Tule Springs Enhancement and Wildlife Protection – This proposal is to improve infrastructure, access, and wildlife protective measures along Corn Creek Road. This project does not involve any ground disturbance or encroachment on BLM managed lands. Corn Creek Road is a U.S. Fish and Wildlife Service (USFWS) road (casefile number N-93761). It is the BLM's understanding that the road is now jointly managed by both USFWS and Tule Springs National Monument, National Park Service (NPS). This project involves the installation of fencing, tortoise fencing, tortoise guards, culverts, kiosks, and relocation of a road sign from NDOT ROW to NPS lands.

This project is subject to the requirements of Section 106 of the National Historic Preservation Act. The SNPLMA program will assist with this process including coordination with the State Historic Preservation Office and consultation with federally recognized Indian Tribes.

Muddy River Restoration – This proposal is to conduct restoration work to reestablish native riparian and upland vegetation within the Muddy River Reserve Unit properties. The proposed project is located primarily on lands owned Clark County but does include proposed work on an existing head cut on the BLM parcel upstream of the project area.

Should this proposal be selected to receive SNPLMA funding, the portion of the proposal located on BLM managed land to stabilize an existing head cut will require coordination with the BLM to determine the appropriate authorization and any additional consultation needed consistent with NEPA. Bear in mind that the minimum amount of time to process a request through NEPA is 18 months or more. This project is subject to the requirements of Section 106 of the National Historic Preservation Act. The SNPLMA program will assist with this process including coordination with the State Historic Preservation Office and consultation with federally recognized Indian Tribes.

If you have any questions or comments regarding the consultation meeting or the MSHCP program please contact Michelle Leiber, SNPLMA Program Manager at 702-515-5168 or mleiber@blm.gov.

Sincerely,



Digitally signed by MICHAEL
CHATTERTON
Date: 2023.10.25 14:36:20 -07'00'

M. Ryan Chatterton
Acting District Manager

e-cc: Bruce Sillitoe, Field Manager, Las Vegas Field Office
Catrina Williams, Field Manager, Red Rock/Sloan Field Office
Michelle Leiber, SNPLMA Program Manager, SNPLMA Division

P. SUPPORT LETTERS



STATE OF NEVADA
DEPARTMENT OF WILDLIFE
 6980 Sierra Center Parkway, Suite 120
 Reno, Nevada 89511
 Phone (775) 688-1500 • Fax (775) 688-1595

ALAN JENNE
Director
 JORDAN GOSHERT
Deputy Director
 CALEB MCADOO
Deputy Director
 MIKE SCOTT
Deputy Director

November 1, 2023

Michelle Leiber
 SNPLMA MSHCP Program Manager
 Bureau of Land Management
 SNPLMA Division
 4701 N. Torrey Pines Dr.
 Las Vegas, NV 89130

RE: Letter of Support for Clark County's Round 20 Nomination Connectivity Management Plan Implementation project

Dear Ms. Leiber:

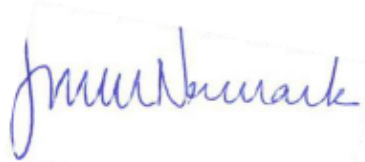
I am pleased to write this letter in support of the **Clark County's Round 20 nomination Connectivity Management Plan Implementation project** under the Multi-Species Habitat Conservation Plan (MSHCP) category of the Southern Nevada Public Land Management Act (SNPLMA). This project would help to achieve recovery action 2.11 in the revised U.S. Fish and Wildlife Service desert tortoise recovery plan aiding the U.S. Fish and Wildlife Service in meeting recovery goals for the Mojave desert tortoise (*Gopherus agassizii*).

Range-wide population estimates for the desert tortoise have shown that the species continues to experience population declines across its range. Habitat loss and fragmentation due to urbanization and population growth is a primary cause of these population declines. Transportation corridors can fragment habitat and create barriers to movement between habitat areas, and studies have shown that mortality from highways may reduce tortoise abundance up to two miles or more away. The desert tortoise is a slow-moving species, making them more susceptible to transportation corridor impacts such as injury and mortality from being hit by vehicles. To prevent transportation corridor mortalities, Nevada Department of Transportation and the Desert Conservation Program have installed more than 400 miles of desert tortoise exclusion fencing along roads and highways in Clark County, Nevada. The presence of fencing greatly reduces the number of roadway mortalities, but it also prevents movement between habitat areas. Reconnecting fragmented habitat by connecting culverts to the desert tortoise fencing helps to re-establish gene flow between isolated populations which improves species fitness.

Letter of Support Round 20 Connectivity Management Plan, p. 2

Thank you for your consideration in funding this proposal. If you have any questions, please don't hesitate to reach out to myself or Wildlife Diversity's Southern Region Supervising Biologist, Matt Flores (mhflores@ndow.org; 702-668-3936).

Sincerely,



Jennifer Newmark
Wildlife Diversity Division Administrator
Nevada Department of Wildlife



JOE LOMBARDO
Governor

STATE OF NEVADA
DEPARTMENT OF TRANSPORTATION
1263 S. Stewart Street
Carson City, Nevada 89712

TRACY LARKIN THOMASON, P.E.
Director

Transmitted Electronically

October 19, 2023

Michelle Leiber
SNPLMA Program Manager, MSHCP
Bureau of Land Management
4701 N. Torrey Pines Drive
Las Vegas, Nevada 89130

Subject: Letter of Support for Clark County's Round 20 Nomination Connectivity
Management Plan Implementation project

Dear Ms. Leiber,

This letter is provided in support for the Clark County Desert Conservation Program's Round 20 nomination of the Connectivity Management Plan Implementation project under the Multi-species Habitat Conservation Plan category.

Range-wide population estimates for the desert tortoise have shown that the species continues to experience population declines across its range. Habitat loss and fragmentation due to urbanization and population growth is a primary cause of these population declines. Transportation corridors can fragment habitat and create barriers to movement between habitat areas, and studies have shown that mortality from highways may reduce tortoise abundance up to two miles or more away. The desert tortoise is a slow-moving species, making them more susceptible to transportation corridor impacts such as injury and mortality from being hit by vehicles. To prevent transportation corridor mortalities, Nevada Department of Transportation and the Desert Conservation Program have installed more than 400 miles of desert tortoise exclusion fencing along roads and highways in Clark County, Nevada. The presence of fencing greatly reduces the number of roadway mortalities, but it also prevents movement between habitat areas. Reconnecting fragmented habitat by connecting culverts to the desert tortoise fencing helps to re-establish gene flow between isolated populations which improves species fitness.

This project would implement recovery action 2.11 in the Revised Recovery Plan for the Mojave Population of the Desert Tortoise, by helping to connect functional habitat for the desert tortoise by increasing connectivity across transportation corridors in Clark County.

Governor's Executive Order 2021-18, Creating the Nevada Habitat Conservation Framework calls for state agencies to collaboratively work to maintain connectivity of habitats. This

framework aims to help key species in each county by developing a connectivity plan of which desert tortoise are one of the main connectivity concerns. This project would begin to help alleviate some of the concerns that have arisen in relation to the connectivity of desert tortoises in Clark County.

I am aware that some of the surveys may occur on lands governed by the Nevada Department of Transportation (NDOT) and there should be no issues with access to complete these surveys provided all the proper rules and procedures are followed and any permits and clearances are received before work starts.

Please feel free to contact me should you have questions regarding NDOT's support for this project.

Sincerely,

A handwritten signature in black ink that reads "Christopher E. Young". The signature is written in a cursive style with a large, stylized 'C' and 'Y'.

Christopher E. Young
Chief, Environmental Services Program



United States Department of the Interior



BUREAU OF LAND MANAGEMENT
 Southern Nevada District Office
 Las Vegas Field Office
 4701 N. Torrey Pines Drive
 Las Vegas, Nevada 89130
<http://www.blm.gov/nevada>

In Reply Refer To:
 6840 (NVS01000)

Michelle Leiber
 SNPLMA Program Manager - PTNA and MSHCP
 Bureau of Land Management
 4701 North Torrey Pines Drive
 Las Vegas, Nevada, 89130

Dear Ms. Leiber:

This letter is provided in support for the Clark County Desert Conservation Program's Round 20 nomination of the Connectivity Management Plan Implementation project under the Multi-species Habitat Conservation Plan category.

Range-wide population estimates for the desert tortoise have shown that the species continues to experience population declines across its range. Habitat loss and fragmentation due to urbanization and population growth is a primary cause of these population declines. Transportation corridors can fragment habitat and create barriers to movement between habitat areas, and studies have shown that mortality from highways may reduce tortoise abundance up to two miles or more away. The desert tortoise is a slow-moving species, making them more susceptible to transportation corridor impacts such as injury and mortality from being hit by vehicles. To prevent transportation corridor mortalities, Nevada Department of Transportation and the Desert Conservation Program have installed more than 400 miles of desert tortoise exclusion fencing along roads and highways in Clark County, Nevada. The presence of fencing greatly reduces the number of roadway mortalities, but it also prevents movement between habitat areas. Reconnecting fragmented habitat by connecting culverts to the desert tortoise fencing helps to re-establish gene flow between isolated populations which improves species fitness.

This project would implement recovery action 2.11 in the Revised Recovery Plan for the Mojave Population of the Desert Tortoise, by helping to connect functional habitat for the desert tortoise by increasing connectivity across transportation corridors in Clark County.

I am aware that some of the surveys may occur on lands governed by the Bureau of Land Management, there should be no issues with access to complete these surveys provided all the proper rules and procedures are followed and any permits and clearances are received before work starts.

INTERIOR REGION 8 • LOWER COLORADO BASIN
 ARIZONA, CALIFORNIA*, NEVADA*
 * PARTIAL

Please feel free to contact Steve Leslie at 702-515-5054, or slcslic@blm.gov, should you have questions regarding the BLM's support for this project.

Sincerely,

A handwritten signature in blue ink, appearing to read "Bruce Sillitoe".

Bruce Sillitoe
Field Manager
Las Vegas Field Office



United States Department of the Interior

FISH AND WILDLIFE SERVICE
 Southern Nevada Fish and Wildlife Office
 4701 North Torrey Pines Drive
 Las Vegas, Nevada 89130



November 1, 2023
Sent electronically

Michelle Leiber
 SNPLMA MSHCP Program Manager
 Bureau of Land Management
 SNPLMA Division
 4701 N. Torrey Pines Dr.
 Las Vegas, Nevada 89130

RE: Letter of Support for Clark County's Southern Nevada Public Land Management Act Round 20
 Nomination Connectivity Management Plan Implementation Project

Dear Michelle Leiber:

I am pleased to provide this letter of support for Clark County's Southern Nevada Public Land Management Act (SNPLMA) Round 20 nomination of the Connectivity Management Plan Implementation Project (Project) under the Multi-Species Habitat Conservation Plan (MSHCP) category.

This project would implement recovery action 2.11 in the Revised Recovery Plan for the Mojave Population of the Desert Tortoise, by helping to connect functional habitat for the desert tortoise by increasing connectivity across transportation corridors by improving highway culverts in Clark County. The desert tortoise is a slow-moving species, making them more susceptible to transportation corridor impacts such as injury and mortality from being hit by vehicles. To prevent transportation corridor mortalities, Nevada Department of Transportation and the Desert Conservation Program have installed more than 400 miles of desert tortoise exclusion fencing along roads and highways in Clark County, Nevada. The presence of fencing greatly reduces the number of roadway mortalities, but it also prevents movement between habitat areas. Reconnecting fragmented habitat by connecting culverts to the desert tortoise fencing helps to re-establish connectivity across roads and highways, maintaining gene flow between isolated populations which improves species fitness.

Over the last two decades, the MSHCP has made important contributions to the conservation and recovery of the desert tortoise in Clark County, Nevada. This project is a continuation of these efforts and I encourage the Partners Working Group and the SNPLMA Executive Committee to move this nomination forward for funding. Please feel free to contact me should you have questions or need additional information regarding our support for this Project.

Sincerely,

GLEN
 KNOWLES

Digitally signed by GLEN
 KNOWLES
 Date: 2023.11.01
 09:49:34 -07'00'

Glen Knowles
 Field Supervisor

SNPLMA Round 20
Multi-Species Habitat Conservation Plan
Nomination Addendum – Comments and Questions
Updates as of March 2024

Nomination: Tab 03

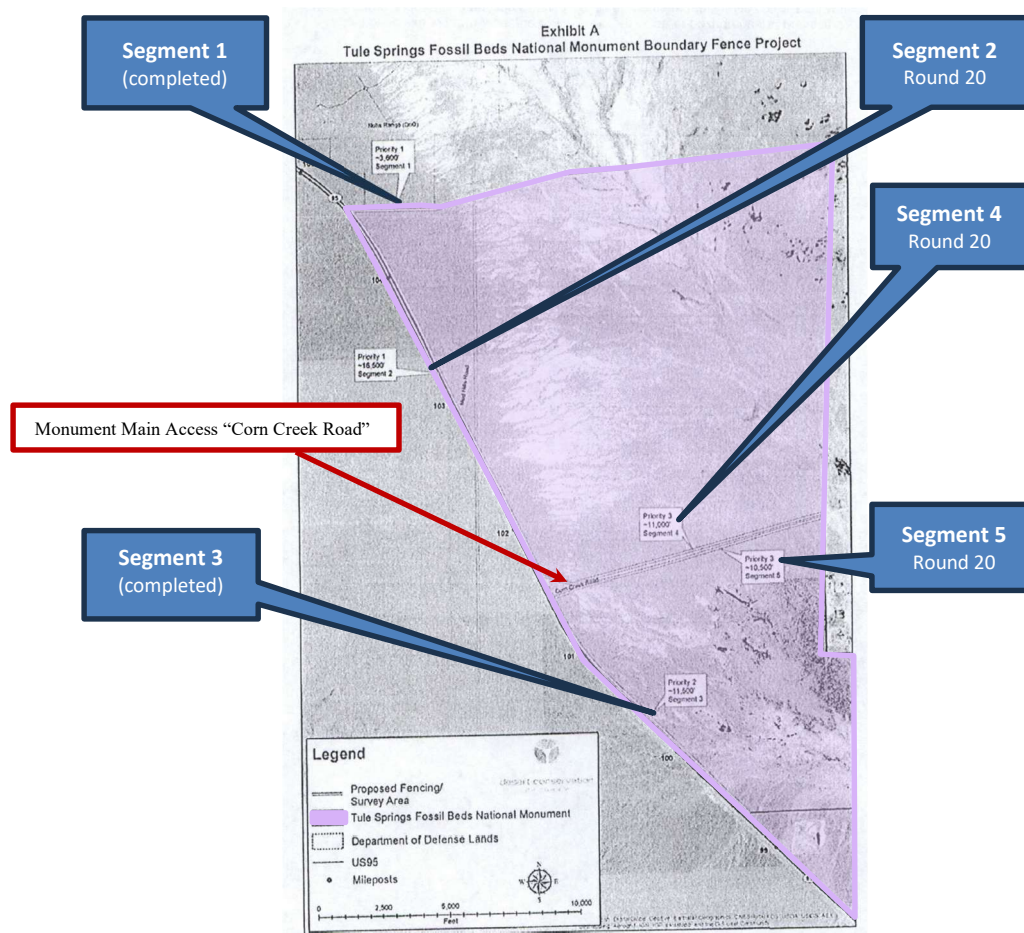
Entity: Clark County

Project: Tule Springs Enhancement and Wildlife Protection

Section A – Background

1. “...This project was identified in the Desert Conservation Program’s 2017-2019 Implementation Plan and Budget (IPB) as partial mitigation under the County’s Section 10(a)(1)(B) incidental take permit.”

- Comment: This paragraph should be modified to clarify the five (5) segments of the Monument boundary fence project as referenced in Exhibit A of the 2017 Interlocal Agreement between NPS and County. Exhibit A has been added to the nomination (suggested language provided below):
“This project known as the Tule Springs Fossil Beds National Monument Boundary Fence Project was identified in DCP’s 2017-2019 Implementation Plan and Budget (IPB) as partial mitigation under the County’s Section 10(a)(1)(B) incidental take permit. Refer to Exhibit A of the Interlocal Agreement dated May 22, 2017, between NPS and the County (enclosed in this nomination at the end of Section N – Maps). Exhibit A (shown below) is a map that depicts locations of the five (5) segments of the Monument boundary fence project.”



2. **“In November 2023, the County completed the first segment of the fence project as identified in the 2017-2019 IPB by constructing approximately 5 miles of post-and-cable fence collocated with desert tortoise fencing adjacent to highway US-95. Other features associated with this project included installation of pedestrian and vehicle access gates and desert tortoise guards. The additional fencing and related infrastructure described in this nomination will further improve access and wildlife protective measures along Corn Creek Road, the primary access route for the Monument.”**

- Comment: The Exhibit A map (shown above) of the “Tule Springs Fossil Beds National Monument Boundary Fence Project” identifies 5 segments. This paragraph needs to be modified to clarify that the segments 1 and 3 of the fence project are complete.

3. **“Clark County DCP proposes to construct an additional 4 miles of post-and-cable fence collocated with desert tortoise fencing and other related infrastructure to include wildlife connectivity culverts, desert tortoise guards, access gates, informational signage, and interpretive kiosks. The proposed fence and associated wildlife protective measures will serve to protect sensitive environmental resources within the monument and will also protect desert tortoises and other wildlife from entering Corn Creek Road.”**

- Comment: This paragraph should clarify that segments 2, 4 and 5 as shown on Exhibit A of the Interlocal Agreement is the location of the Round 20 proposed project.

4. **“Land Ownership and Authority to Construct...Clark County and NPS have entered into an interlocal agreement dated May 22, 2017, for the construction of the fence. The interlocal agreement addresses the completed fence constructed along US-95 and the work proposed in this nomination (i.e., Corn Creek Road). The interlocal agreement ensures both parties are in agreement about proceeding with the project. It describes the responsibility of each party in carrying out the project and clearly defines long-term maintenance commitments and ownership of the fence. NPS has also agreed to provide the necessary land use authorization to the selected construction contractor prior to construction.”**

- Comment: Per the 2017 Interlocal Agreement between NPS and County...

1. *Article II, NPS agrees to...

- a. complete biological surveys and to prepare any documents necessary for consultation with the USFWS under Sec. 7 of the ESA, and
- b. conduct all coordination necessary to address and resolve any ROW issues prior to construction of the PROJECT.

Nomination needs to clarify funding source for activities identified in above items a and b; and provide the estimated cost for such activities. If any activities are complete or partially complete—clarify the cost of those segments in comparison to the estimated cost required for segments 2, 4 and 5.

2. Article II, COUNTY agrees to solicit services of consultants and contractors...for completion of the following tasks:

- a. cultural resources consultation with the Nevada SHPO;
- b. preparation of engineering specifications for the construction of the fence, desert tortoise guards, and access gates;
- c. biological monitoring and compliance with oversight during construction of the Project; and
- d. construction of the PROJECT.

Clarify funding source for the activities identified in above items a through d; and clarify the SNPLMA requested amount of \$150,000 estimated for Sec. 106 consultation and NEPA.

County needs to clearly explain whether or not any NEPA costs include or does not include

costs associated with biological surveys and Sec. 7 consultation as well as any costs associated with resolving ROW issues prior to construction.

3. Article II, Both Parties agree to...
 - a. Collaborate and engage in coordinating with regulatory and land management agencies as necessary, for the execution of the PROJECT, and
 - b. Collaborate on the review and approval of deliverables provided by County's consultants.

Clarify whether or not "collaboration" costs include personnel (salary and fringe) and/or contractual costs. Personnel costs must be outlined in the budget detail and requested amount supported with a description of how the costs are derived including anticipated job titles, pay scale level, pay scale amount and subtotal for each anticipated county employee to be funded either by SNPLMA or county share costs or both.

4. Article II, once the PROJECT is constructed and upon notice from COUNTY, NPS agrees it shall own the PROJECT and shall assume all maintenance responsibility for the PROJECT. Nomination will include clarifying language like "*County recognizes that disposition instructions regarding the completed project and the required perpetual maintenance of such SNPLMA funded facilities will be reviewed and approved by the BLM/SNPLMA Division.*"
5. Article III, the County acknowledges that this Agreement does not vest in the County any ownership or possessory interest in the PROJECT site, including, without limitation, any interest as lessee or tenant.
Nomination will include clarifying language that County will obtain a proper land use authorization for construction of the project on non-County owned land.

As stated in the nomination under "Compliance with Environmental Laws" NPS has completed NEPA for the fencing project which covers the US-95 and Corn Creek Road segments. However there may be some minor updates to some or all environmental reviews to add minor project modifications.

Questions: The SNPLMA Program Manager will work with the nominating entity to clarify funding costs for additional NEPA, if any. The nomination will also need to be updated to identify the land use authorization(s) required prior to constructing on non-Clark County land.

Section D – Project Deliverables

1. **Primary Deliverables:**
 - h. One (1) existing information kiosk to be relocated from NDOT right-of-way onto the Tule Springs National Fossil Beds National Monument property.**
 - Comment: The SNPLMA Program Manager will work with the nominating entity to clarify land use authorizations and/or ownership, i.e., Holder of the NDOT right-of-way? Who owns the kiosk to be relocated from the NDOT right-of-way? Has County coordinated with NDOT about the relocation of the kiosk?
2. **Standard Deliverables:**
 - a. Obtain land use authorization from NPS for installation of real property (fencing, culverts, gates, kiosk, and signs).**
 - Comment: Nomination needs to be clarified that the County (not a 3rd party) will obtain a right-of-way permit from NPS?
 - d. Obtain NPS approval on Real Property Transfer and Disposition.**

Comment: If this project is approved for SNPLMA funding, the BLM would be the assisting agency issuing the federal financial agreement (cooperative agreement) to Clark County. Under the terms of the agreement Clark County is required to maintain the constructed project deliverables for which they received SNPLMA federal funding until the BLM issues disposition instructions. Disposition is authorized by 2 CFR Part 200.311(c). When real property is no longer needed for the originally authorized purpose, the non-Federal entity must obtain disposition instructions from the Federal awarding agency or pass-through entity. The instructions would include alternatives such as transfer of title.

Section F – Project Timeframe

“Year 1: SNPLMA Coop Agreement/Fed Environ Review Update, Obtain Land Use Authorization

- **Coordinate with BLM and NPS on any required updates to the environmental review and Section 106 consultation.**

Year 2: Award Construction and Design Contracts

- **Obtain land use authorization for selected contractor.**

Year 5: Project Closeout”

Comment:

- Obtain Land Use Authorization is duplicated in Year 1 and 2?
- Year 5 should include “Real Property Transfer and Disposition.”

Section I – Project Budget (and Excel Budget Detail)

Cost Benefit Analysis

“The cost estimates for the following project components were based on cost estimates and final costs to complete the Priority 1 and Priority 2 segments: post-and-cable fence collocated with desert tortoise fence, desert tortoise guards, vehicle gates, pedestrian gates, and the interpretive kiosk.”

- Comment: For consistency, this paragraph should be modified by referencing the completed priority areas and segment numbers by *Priority 1 (Segment 1) and Priority 2 (Segment 3)* as depicted on Exhibit A map of the Interlocal Agreement between NPS and County for the “Tule Springs Fossil Beds National Monument Boundary Fence Project.”

Partnership and/or Contributed Funds

“There are no other contributed funds, and this is a stand-alone project 100 percent funded through the SNPLMA program.”

- Comment: County will need to either revised the SNPLMA project requested funds to include costs for personnel/fringe or incorporate a non-federal cost share to show the County’s substantial involvement in overseeing the project. Refer to comments provided below on Budget Detail (MS-Excel) Tab 1 and Tab 2.

Tab 1 “Personnel” and Tab 2 “Fringe Benefits”

- **“Clark County DCP staff will monitor the project and report financial and progress reports to the BLM/SNPLMA Division. These costs will be covered by the recipient organization and not reimbursed through the SNPLMA project funds.”**Comment: There are no allocated costs proposed for “Personnel” (salaries and wages) for this project. This is an important cost area that demonstrates substantial involvement of the Recipient. While SNPLMA does not require cost share— if SNPLMA funds are not allocated for these costs the recipient will need to outline costs to be covered by other non-federal project funding (e.g., cost share). Substantial involvement by a recipient of a federal award (i.e., Clark County) must clearly identify staff time (hours/months), salary/wage

and total cost over the 5-year period of performance in the budget detail to show how the project will be managed and monitored to successful completion including fiscal staff who are spending time overseeing fiscal and contracting responsibilities.

Tab 6 “Contractual” costs and justification narrative

Description of Contract	Unit	UOM	Unit Cost	SNPLMA Funds	Unit	UOM	Unit Cost	Cost Share Funds (if applicable)
NEPA/Sec.106 Contract	1	contract	\$150,000	\$150,000				\$ -
Post & Cable/Tortoise Fence	1	fence	\$1,750,000	\$1,750,000				\$ -
Wildlife Culverts	4	culvert	\$90,000	\$360,000				\$ -
Nat'l Mon. Entry Signs	2	sign	\$30,000	\$60,000				\$ -
Kiosks	2	kiosk	\$15,000	\$30,000				\$ -
Desert Tortoise Guards	4	guards	\$30,000	\$120,000				\$ -
Gates	4	gates	\$7,500	\$30,000				\$ -
				TOTAL (SNPLMA):	\$2,500,000	TOTAL (Cost Share):		\$ -

Justification: “...The Post & Cable / Tortoise Fence estimate is based on the average per mile cost for a competitive bid for the same style of fencing along US-95.”

- Comment: The cost estimate breakdown for fencing only provides the detail for tortoise fencing. What is the cost breakdown for post-and-cable fencing?

Section L - Maps

Location Map

Comment: this map depicts lines for township, range, and section without depicting the label (at minimum) for each township and range. This makes it very difficult to determine the reference point of the project location.

Assessor Parcel Map “Culverts” US 95-1.

Comment: this map identifies culvert locations along US-95 and Hwy-165; but these highways are not a specified culvert identified in Section A “Background” item #1 for culverts-2. The background section should be updated.

**Southern Nevada Public Land Management Act
Multi-Species Habitat Conservation Plan
Round 20**

Clark County



MOJAVEMAX.COM



desert conservation
PROGRAM

Tule Springs Enhancement and Wildlife Protection

Amount Requested: \$2,500,000

A. BACKGROUND INFORMATION

On December 2, 2014, Congress passed the Carl Levin and Howard P. 'Buck' McKeon National Defense Authorization Act for Fiscal Year 2015 bill, which designated the Tule Springs Fossil Beds National Monument (Monument) as a unit of the National Park Service (NPS). This Act resulted in the withdrawal of 22,650 acres of public land administered for multiple use purposes by the Bureau of Land Management (BLM) from the Las Vegas Valley Disposal Boundary, to protect that land by placing it into conservation status for administration by NPS.

Prior to the 2014 designation of the Monument, the Tule Springs area being managed by the BLM for multiple-use purposes had experienced intense recreational use over decades from off-highway vehicle recreation, target shooting, and desert dumping activities. These recreational activities are no longer authorized within the Monument; however, the public has been slow to accept the new rules governing the Monument and unauthorized recreational use continues. Therefore, the NPS sought to construct boundary fences that would deter unauthorized uses and to install signage and other infrastructure to educate the public about the Monument and its sensitive resource values. Given the limited budget NPS has for the administration of the Monument, the Clark County Desert Conservation Program (DCP) agreed to collaborate with NPS to secure funding and oversee the completion of a boundary fence and related infrastructure. The Tule Springs National Monument fencing and infrastructure project was identified in DCP's 2017-2019 Implementation Plan and Budget (IPB) as partial mitigation under the County's Section 10(a)(1)(B) incidental take permit. The IPB was approved by the U.S. Fish and Wildlife Service (USFWS) as mitigation under the County's permit and was further approved and adopted by the County Board of Commissioners on December 20, 2016.

In November 2023, the County completed the first segment of the fence project as identified in the 2017-2019 IPB by constructing approximately 5 miles of post-and-cable fence collocated with desert tortoise fencing adjacent to highway US-95. Other features associated with this project included installation of pedestrian and vehicle access gates and desert tortoise guards. The additional fencing and related infrastructure described in this nomination will further improve access and wildlife protective measures along Corn Creek Road, the primary access route for the Monument.

Clark County DCP proposes to construct an additional 4 miles of post-and-cable fence collocated with desert tortoise fencing and other related infrastructure to include wildlife connectivity culverts, desert tortoise guards, access gates, informational signage, and interpretive kiosks. The proposed fence and associated wildlife protective measures will serve to protect sensitive environmental resources within the monument and will also protect desert tortoises and other wildlife from entering Corn Creek Road.

This project will enhance wildlife habitat by reducing illegal offroad activity via construction of physical barriers, by improving communication with the public via installation of signage that identifies agency land, and constructing interpretive kiosks that emphasize resource protection and communicate park rules to the public. The wildlife protective measures include post-and-cable fencing collocated with desert tortoise fencing, desert tortoise guards, wildlife culverts, vehicle swing gates, and pedestrian gates. Public communication measures include improved signage and construction of interpretive kiosks.

Land Ownership and Authority to Construct

Corn Creek Road and adjacent lands are administered by NPS. The only nearby infrastructure includes a buried fiber optic line; a call-before-you-dig will be conducted prior to ground disturbance to avoid potential impacts to the fiber optic line. Clark County and NPS have entered into an interlocal agreement dated May 22, 2017, for the construction of the fence. The interlocal agreement addresses the completed fence constructed along US-95 and the work proposed in this nomination (i.e., Corn Creek Road). The interlocal agreement ensures both parties are in agreement about proceeding with the project. It describes the responsibility of each party in carrying out the project and clearly defines long-term maintenance commitments and ownership of the fence. NPS has also agreed to provide the necessary land use authorization to the selected construction contractor prior to construction.

Compliance with Environmental Laws

The NPS has completed Section 7 of the Endangered Species Act (ESA) consultation, Section 106 of the National Historic Preservation Act (NHPA) consultation, and analysis pursuant to the National Environmental Policy Act (NEPA) for the fencing project. All analyses covered the US-95 and Corn Creek Road segments. The USFWS issued Biological Opinion (File No. 08NVES00-2018-F-0187) for the project. Since completion of these efforts, some proposed project design components have changed along Corn Creek Road, including the addition of wildlife culverts, additional tortoise guards and gates, kiosks, and Monument entry signs. However, the project footprint has not changed, and the impacted areas have already been included in the previous surveys. We anticipate that minor updates may be required to some or all environmental reviews to address these minor project modifications. If awarded the requested SNPLMA funding, the DCP acknowledges that completion of a Cultural Resource Inventory Needs Assessment (CRINA) form for evaluation of the project will be required.

Project Management

The DCP utilizes Case360 for project management. All contractual agreements must specify the milestones and deliverables to accomplish the goals of the contract. Tracking of a contractor's performance is accomplished through completion of milestones and submittal of deliverables as outlined in the agreement. The DCP program will monitor the installation of the fence using standard construction progress methods. Site inspections will occur on a weekly or bi-weekly basis to determine the progress of each deliverable, including the miles of fence installed and number of other features installed. The final 5 percent of all construction costs are withheld until the contractor meets substantial completion requirements.

1. Describe relationship to prior approved phases or related SNPLMA projects and anticipated future phases:

The interlocal agreement between the County and NPS identified the fencing segments that County would aid with constructing and assigned a priority to these segments based on NPS needs. Priority 1 was assigned to the fencing segment along US-95 north of Corn Creek Road, while Priority 2 assigned to the fencing segment along US-95 south of Corn Creek Road, and Priority 3 assigned to the fencing segment along Corn Creek Road. Priority 1 and Priority 2 segments are complete. These segments were funded with MSHCP Section 10 disturbance fees. This nomination has been designed as a stand-alone project; no previous or future SNPLMA projects are related to this project.

2. Acknowledgement of stand-alone project and no guarantee of funding for future phases:

This nomination has been designed as a stand-alone project and the DCP acknowledges that there is no guarantee of funding for future phases.

B. SNPLMA STRATEGIC PLAN VALUES

The MSHCP category will implement the goals and objectives of the MSHCP and the SNPLMA Strategic Plan by sustaining the quality of the outdoor environment by conserving, preserving, and restoring natural and cultural resources; while focusing on the three SNPLMA core values: connectivity, sustainability, and community. This project will promote the three values as summarized below:

1. Sustainability:

This project promotes sustainability by using fence posts made from long-lasting, high-quality repurposed railroad ties. The fence will restrict off-road vehicle activity to maintain the natural resources of the area and prevent further damage to the Tule Springs Fossil Beds National Monument lands. Off-highway vehicles have the potential to injure tortoises and damage sensitive biological and cultural resources, which can take years, or even centuries, to recover from such impacts. Restricting off-road vehicle access and other unauthorized activities will improve long-term sustainability of the landscape. MSHCP-covered species, or those proposed for coverage under an amended permit, that have been documented within the Monument include the Mojave desert tortoise, golden eagle, Le Conte's thrasher, blue grosbeak, phainopepla, western burrowing owl, and loggerhead shrike. These species will all benefit from improved habitat conditions within the Monument.

2. Connectivity:

This project includes several elements that will maintain connectivity of habitat, including all four (4) wildlife culverts and one (1) of the four (4) tortoise guards crossing Corn Creek Road. Wildlife culverts will be spaced at less than 680 meters (~ 2,230 feet) apart, which is the current U.S. Fish and Wildlife Service-recommended maximum spacing to maintain habitat connectivity based on the best available scientific and commercial information. These wildlife culverts will allow many wildlife species to safely move between habitats north and south of Corn Creek Road, maintaining connectivity in this area by providing safe passage for all smaller terrestrial animals to cross Corn Creek Road without the risk of injury from passing cars.

3. Community:

New signage marking the entrance of the Tule Springs Fossil Beds National Monument will be designed and installed by a county-hired contractor in coordination with NPS personnel. These signs will aid to inform the public of the ownership of the land and reinforce that the resource protective rules and regulations of the Monument must be observed. This includes messaging about staying on open roads and the prohibition of shooting, prospecting, collecting animals or other resources, or otherwise damaging habitat. Other forms of community engagement will include information kiosks to help the public learn about topics such as the habitat, rich natural resources, and history of the National Monument.

C. PURPOSE STATEMENT

The Tule Springs Enhancement and Wildlife Protection project is proposed to fulfill partial mitigation requirements under the Clark County MSHCP by improving wildlife protective measures and public awareness in the northwest part of the Las Vegas Valley along Corn Creek Road within the congressionally designated Tule Springs Fossil Beds National Monument in Clark County, Nevada. Clark County will install wildlife protective barriers, monument entrance signs, and educational kiosks to enhance conservation of a unique and protected ever-changing ecosystem.

D. PROJECT DELIVERABLES

1. Primary Deliverables:
 - a. Four (4) miles of combination post-and-cable fencing with desert tortoise fencing.
 - b. Four (4) desert tortoise guards.
 - c. Four (4) wildlife culverts.
 - d. Two (2) vehicle swing gates.
 - e. Two (2) pedestrian access gates, installed at key access points to the monument.
 - f. Two (2) National Monument entrance signs.
 - g. One (1) new information and interpretive kiosk.
 - h. One (1) existing information kiosk to be relocated from NDOT right-of-way onto the Tule Springs National Fossil Beds National Monument property.
2. Anticipated Deliverables:
 - a. There are no anticipated deliverables for this project.
3. Standard Deliverables:
 - a. Designs and specifications.
 - b. Ongoing administration of financial instrument.
 - c. Obtain land use authorization from NPS for installation of real property (fencing, culverts, gates, kiosk, and signs).
 - d. Obtain NPS approval on Real Property Transfer and Disposition.
 - e. Pre-award planning, scoping, and budgeting activities, and award of contract(s).
 - f. Issuance of project completion notice from DCP to BLM/SNPLMA.
 - g. Issuance of final payment to contractor(s).
 - h. Final report to BLM/SNPLMA.
 - i. Notice of project completion to BLM/SNPLMA.³

E. PROJECT LOCATION

Project Site Address: NPS, Tule Springs National Monument along Corn Creek Road & US-95

Legal Description: Mount Diablo Meridian: Clark County, Nevada:

T17S R58E,

sec. 25, Lot 19;

T17S R59E,

sec. 31, Lots 8 and 9, SESE, SWSE;

sec. 32, NESE, NESW, NWSE, SESW, SWSW;
 sec. 33, NWSW.
 T18S R59E, s
 sec. 06, Lots 8 and 9.

Clark County APN(s): [**proposed improvements for installation/construction*]

- 088-31-000-001 (within T17S, R59E, sec. 31)
 *~2 miles of combination post-and-cable fencing with desert tortoise fencing
 *National Monument Entry Sign
- 088-32-000-001 (within T17S, R59E, sec. 32)
 *~2 miles of combination post-and-cable fencing with desert tortoise fencing
 *(2) Wildlife Culverts
 *(3) Tortoise Guards
 *(2) Pedestrian Access Gates
- 088-33-000-001 (within T17S, R59E, sec. 33)
 *Tortoise Guard
 *Short section of fencing to connect tortoise guard to the rest of the fence.
- 089-00-002-019 (within T17S, R58E, sec. 25)
 *New Location of existing Kiosk
 *New Park Entrance sign
- 088-31-099-001
 *(1) Existing Kiosk will be moved to 089-00-002-019
- 099-06-000-001
 *Short section of fencing may enter this parcel depending on the final design.

Current Land Use and Zoning: Open Lands

Latitude and Longitude: 36.42831231617737, -115.40449432315296

Structure Location for Removal & Relocation 36.425765°, -115.422870° Existing kiosk	Proposed Structures Relocation Site 36.425684°, -115.421324° site for kiosk & new park entrance sign
--	---

Congressional District(s): Congressional District 4

F. PROJECT TIMEFRAME

Project will be completed within five years from execution date of the SNPLMA federal award. Below is a schedule by each year of the federal award that generally outlines major milestones and nomination deliverables planned for project implementation and completion:

Year 1: SNPLMA Cooperative Agreement/Federal Environmental Review Update, Obtain Land Use Authorization

- Request to initiate, develop project workplan; pre-work site visit with SNPLMA Program Manager.

- Respond to the Notice of Intent to Award by federal financial assistance application submittal.
- Coordinate with BLM and NPS on any required updates to the environmental review and Section 106 consultation.
- Request and receive SNPLMA notice to proceed and federal award (assistance agreement).

Year 2: Award Construction and Design Contracts

- Develop scope of work for sign designs; solicit proposals; award contract.
- Contractor development of entrance sign and interpretive kiosk designs.
- Develop construction bid documents for wildlife protective measures; solicit bids; award contract.
- Obtain land use authorization for selected contractor.

Year 3: Award Contracts/Initiate Construction

- Execute construction contract for wildlife protective measures; issue administrative notice to proceed.
- Pre-construction kick-off meeting.
- Contractor obtains construction permits.
- Issue notice to proceed for construction of wildlife protective measures.
- Contractor construct combination post-and-cable with desert tortoise fencing.
- Contractor construct desert tortoise guards.
- Contractor construct wildlife culverts.
- Contractor installs vehicle swing gates.
- Contractor installs pedestrian access gates at key access points to the Tule Springs National Monument.
- Contractor relocates an existing information kiosk from NDOT right-of-way onto NPS monument land.
- County develop construction bid documents for construction of entrance signs and interpretive kiosk; solicit bids; award contract.

Year 4: Complete Construction

- Notice of Completion for wildlife protective measures contract work.
- Execute construction contract for signage; issue administrative notice to proceed.
- Pre-construction kick-off meeting.
- Contractor obtain permits, as appropriate (signage and kiosk construction/installation building permits from the appropriate authorities.
- Issue notice to proceed for construction/installation of signage and kiosk.
- Contractor construct/install entrance signs and interpretive kiosk for NPS Tule Springs National Monument.

Year 5: Project Closeout

- Reconcile project file, financial expenditures, and unliquidated obligations.
- Conduct final site inspection with SNPLMA Program Manager.
- Prepare closeout request package and update SMART.

- Submit final financial report (SF-425) and performance narrative via Grant Solutions.
- Submit closeout request package.

G. LEVEL OF PROJECT READINESS FOR IMPLEMENTATION

Is this a shovel-ready project (explain if “Yes”): Yes -or- No

Have you applied, received, or is there the opportunity to obtain funding from another source for this project? Please list the additional funding opportunities received or applied for and indicate whether it is federal or nonfederal funding.

There are no plans to apply for or receive additional funding for this project. The NEPA and Section 106 cultural surveys have been completed, though some aspects may need to be amended due to minor changes in the project components. These elements will be addressed prior to construction.

H. FUTURE OPERATION AND MAINTENANCE

This project is being conducted in coordination with the NPS, Tule Springs Fossil Beds National Monument. An interlocal agreement has been executed between the two agencies for construction of the project; once construction activities are complete, the full ownership of all elements of this project will be transferred to the Tule Springs Fossil Beds National Monument, which has committed to the future operation and maintenance of the elements of the project.

I. PROJECT BUDGET

The SNPLMA amount requested for this project is \$2,500,000.

Summarized below are the estimated project costs. Enclosed at the end of this nomination is the “Project Budget Detail & Narrative” spreadsheet that provides the budget summary and detail breakdown of the estimated project costs by the SF-424A budget cost categories, as applicable.

Budget Cost Categories (SF424A)	SNPLMA Funds	Cost Share Funds
1) Personnel	\$ -	\$ -
2) Fringe Benefits	\$ -	\$ -
3) Travel	\$ -	\$ -
4) Equipment	\$ -	\$ -
5) Supplies	\$ -	\$ -
6) Contractual	\$ 2,500,000	\$ -
7) Construction	\$ -	\$ -
8) Other (e.g., training)	\$ -	\$ -
Total Direct Costs (sum of 1 through 8)	\$ 2,500,000	\$ -
9) Indirect Charges	\$ -	\$ -
TOTAL BUDGET (Direct & Indirect Costs)	\$ 2,500,000	\$ -

Cost-Benefit Analysis

This project will be completed within the above budget. This cost estimate was calculated based on quotes from contractors and from review of final costs associated with recently completed projects. Costs to conduct minor updates to the completed environmental reviews and to complete the SNPLMA program's Section 106 review requirements have been included.

The cost estimates for the following project components were based on cost estimates and final costs to complete the Priority 1 and Priority 2 segments: post-and-cable fence collocated with desert tortoise fence, desert tortoise guards, vehicle gates, pedestrian gates, and the interpretive kiosk.

The cost estimate for the wildlife culverts is based on final cost, adjusted for inflation, of constructing a similar style culvert in the Boulder City Conservation Easement – a project that the Desert Conservation Program completed in 2017.

Cost estimates for the National Monument entry signs were provided by the National Park Service and are based on recently completed, similar projects.

Partnership and/or Contributed Funds:

There are no other contributed funds, and this is a stand-alone project 100 percent funded through the SNPLMA program.

J. KEY CONTACTS:

Program Director: Kimberley Jenkins, Principal Environmental Specialist

Email: Kimberley.jenkins@clarkcountynv.gov

Phone Number: 702-455-5529

Authorized Officer: Esther Criss, Senior Management Analyst

Email: Esther.Criss@ClarkCountyNV.gov

Phone number: 702-455-3554

Project Manager: Scott Cambrin, Senior Biologist

Email: scott.cambrin@clarkcountynv.gov

Phone Number: 702-455-3859

Budget Officer: Daniel Hoover, Senior Management Analyst

Email: DHoover@clarkcountynv.gov

Phone Number: 702-455-3637

Support Staff: Sharon McLeish, Administrative Specialist

Email: Sharon.McLeish@ClarkCountyNV.gov

Phone number: 702-455-3536

K. ORDERS AND PRIORITIES

A. Executive Orders (EO):

1. ***EO No. 13855: Promoting Active Management of America's Forests, Range Lands to Improve Conditions and Reduce Wildfire Risk***
This project will reduce illegal off-road activity protecting National Monument Lands from the introduction of damaging invasive weeds.
2. ***EO No. 14005: Ensuring the Future is Made in All of America by All of America's Workers***
This project will maximize the use of goods, products, and materials produced in, and services offered in, the United States. All work for this project will be performed by American companies.
3. ***EO No. 14063: Use of Project Labor Agreements for Federal Construction Projects (applicable to projects estimated at \$35 million or more)***
Not applicable
4. ***EO No. 14072: Strengthening the Nation's Forests, Communities, and Local Economies***
This project will protect plant and animal habitat while engaging the community in responsible enjoyment of the National Monument.
5. ***EO No. 14096: Revitalizing Our Nation's Commitment to Environmental Justice for All***
Not applicable

B. Secretarial Orders

1. ***SO No. 3347: Conservation Stewardship and Outdoor Recreation.***
This project will help to conserve the environment near Corn Creek Road on the Tule Springs Fossil Beds National Monument by limiting access for illegal offroad activity, while encouraging pedestrian access and responsible outdoor recreation through education and physical barriers.
2. ***SO No. 3356: Hunting, Fishing, Recreational Shooting, and Wildlife Conservation Opportunities and Coordination with States, Tribes and Territories.***
This project will improve habitat for wildlife and promote conserving the valuable wildlife resources of the Tule Springs Fossil Beds National Monument for current and future generations to observe and enjoy.
3. ***SO No. 3362: Improving Habitat Quality in Western Big-Game Winter Range and Migration Corridors.*** This project will help in preventing the introduction of invasive weeds helping to preserve natural forage in land adjacent to vital Desert Bighorn Sheep in habitat in the Desert National Wildlife.

4. ***SO No. 3366: Increasing Recreational Opportunities on Lands and Waters Managed by the U.S. Department of the Interior***

This project helps to increase responsible recreation opportunities through protecting motorists from unintended collisions with wildlife, and education of areas available to recreate via information kiosks.

5. ***SO No. 3370: Conservation Stewardship and Increasing Public Access to Urban National Wildlife Refuges.***

Corn Creek Road is a vital access point to the Desert National Wildlife Refuge. This project will protect motorists from the stress of unintended collisions with wildlife as they enter the refuge, as well as protect the wildlife to ensure that robust populations are connected throughout the region.

6. ***SO No. 3372: Reducing Wildfire Risks on Department of the Interior Land Through Active Management.***

Invasive weeds are one of the biggest wildfire threats to the desert habitat. By restricting access of illegal offroad activity this will prevent the introduction of invasive weeds into the National Monument.

7. ***SO No. 3373: Evaluating Public Access in Bureau of Land Management Public Land Disposal and Exchanges (focus is on Sec. 4.b.(3) Potential increased public recreational access to existing public lands resulting from the proposed land acquired through an exchange (acquisition)).***

Not applicable, this project entirely on National Park Service land in the Tule Springs Fossil Beds National Monument.

8. ***SO No. 3376: Increasing Recreational Opportunities through the use of Electric Bikes.***

Not applicable

C. Department of the Interior Priorities:

1. ***Identifying steps to accelerate responsible development of renewable energy on public lands and waters. We are investing in climate research and environmental innovation to incentivize the rapid deployment of clean energy solutions, while reviewing existing programs to restore balance on America's public lands and waters to benefit current and future generations.***

Not applicable

2. ***Strengthening the government-to-government relationship with sovereign Tribal nations. We understand that tribal sovereignty and self-governance, as well as honoring the federal trust responsibility to Tribal Nations, must be the cornerstones of federal Indian policy.***

Not applicable

3. ***Making investments to support the Administration's goal of creating millions of family-supporting and union jobs. This includes establishing a new Climate***

Conservation Corps Initiative to put a new generation of Americans to work conserving and restoring public lands and waters, increasing reforestation, increasing carbon sequestration in the agricultural sector, protecting biodiversity, improving access to recreation, and addressing the changing climate.

This project will provide approximately 5-20 temporary construction jobs over the course of the project.

4. ***Working to conserve at least 30% each of our lands and waters by the year 2030.***

We will work to protect biodiversity, slow extinction rates, and help leverage natural climate solutions by conserving 30% of America's lands and waters by 2030. This relies on support for local, state, private, and tribally led conservation and restoration efforts that are underway across America.

This project helps to slow extinction rates by protecting the Desert Tortoise listed on the Endangered species act through the installation of tortoise exclusion fencing around a vehicle road. This project also promotes biodiversity through preventing illegal off road activity that has the potential to introduce invasive and non-native species that out-compete native species for resources.

5. ***Centering equity and environmental justice. The impacts of the multiple crises in the United States are not evenly distributed in our society. Communities of color, low-income families, and rural and indigenous communities have long suffered disproportionate and cumulative harm from air pollution, water pollution, and toxic sites. At every step of the way, Interior will engage diverse stakeholders across the country, as well as conduct formal consultation with Tribes in recognition of the U.S. government's trust responsibilities.***

Not applicable

D. USDA Forest Service Priorities:

1. ***Controlling the COVID-19 pandemic***

This project will occur on land owned and managed by the National Park Service. However, the County will ensure on-site personnel comply with guidelines set by the CDC.

2. ***Providing economic relief***

This project will occur on land owned and managed by the National Park Service.

3. ***Tackling climate change***

This project will occur on land owned and managed by the National Park Service

4. ***Advancing racial equity***

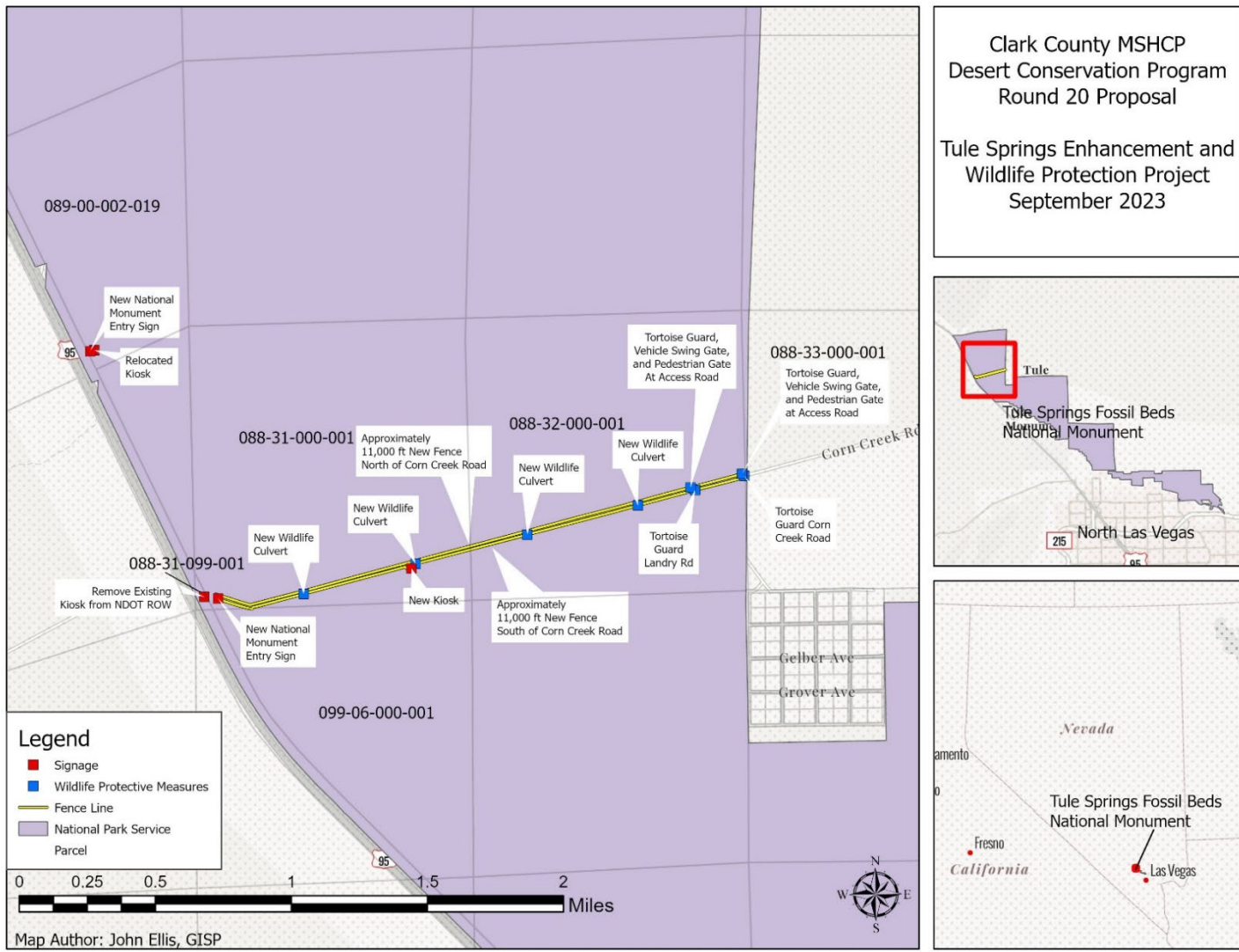
This project will occur on land owned and managed by the National Park Service.

5. ***Improving our workforce and work environment***

This project will occur on land owned and managed by the National Park Service.

L. MAPS

Location Map

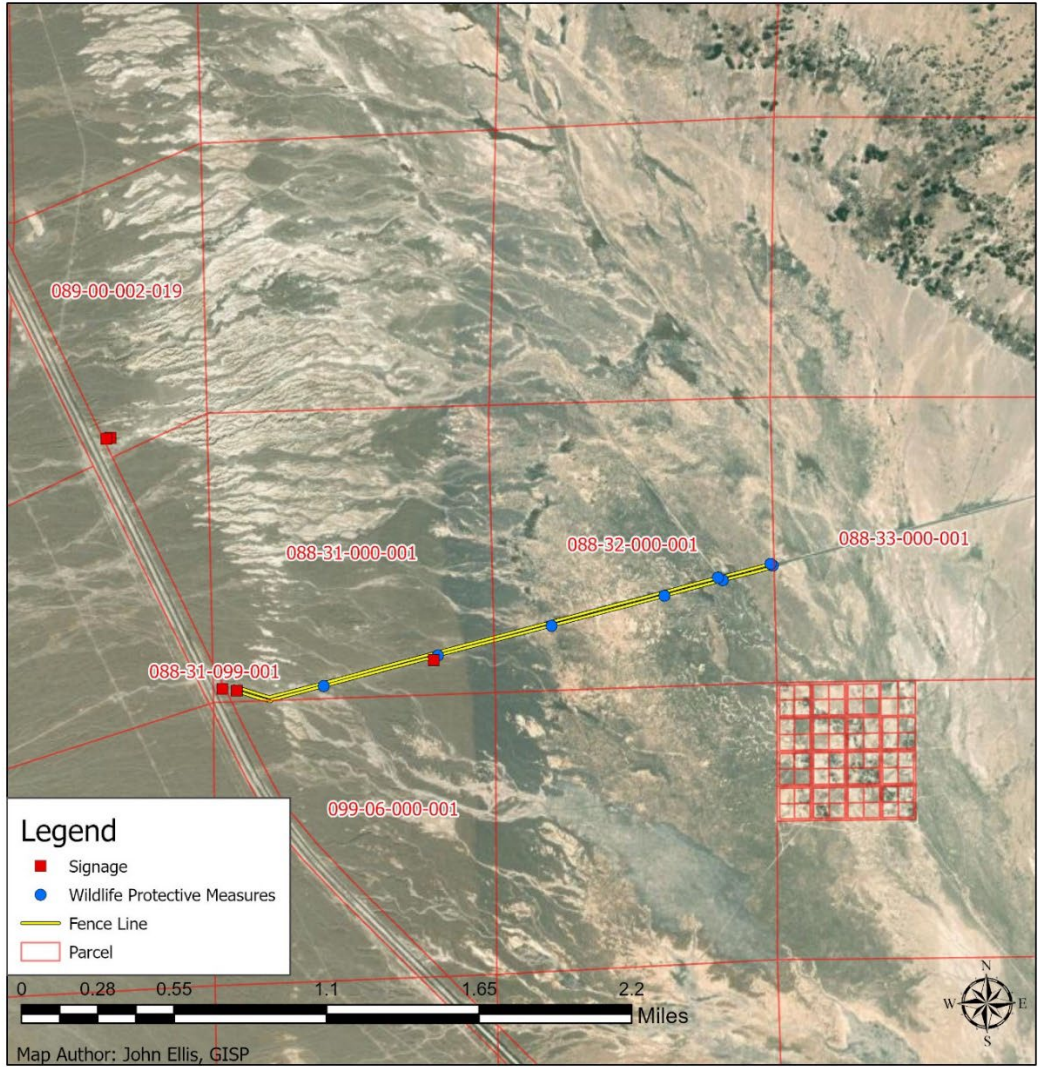


Clark County MSHCP
Desert Conservation Program
Round 20 Proposal
Tule Springs Enhancement and
Wildlife Protection Project
September 2023



Map Author: John Ellis, GISP
California State Parks, Esri, HERE, Garmin, SafeGraph, GeoTechnologies, Inc., METI/NASA, USGS, Bureau of Land Management, EPA, NPS, US Census Bureau, USDA, Clark County Dept of Aviation, California State Parks, Esri, HERE, Garmin, SafeGraph, FAO, METI/NASA, USGS, Bureau of Land Management, EPA, NPS, Esri, HERE, Garmin, FAO, NOAA, USGS, EPA

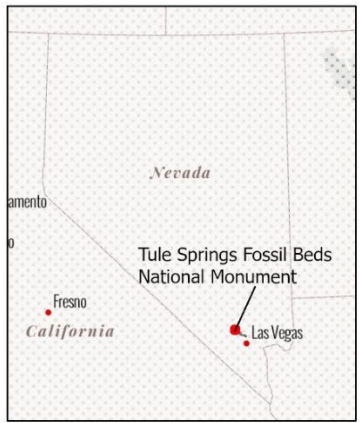
County Assessor Parcel Map



Clark County MSHCP
Desert Conservation Program
Round 20 Proposal

Tule Springs Enhancement and
Wildlife Protection Project
September 2023

Parcel Map



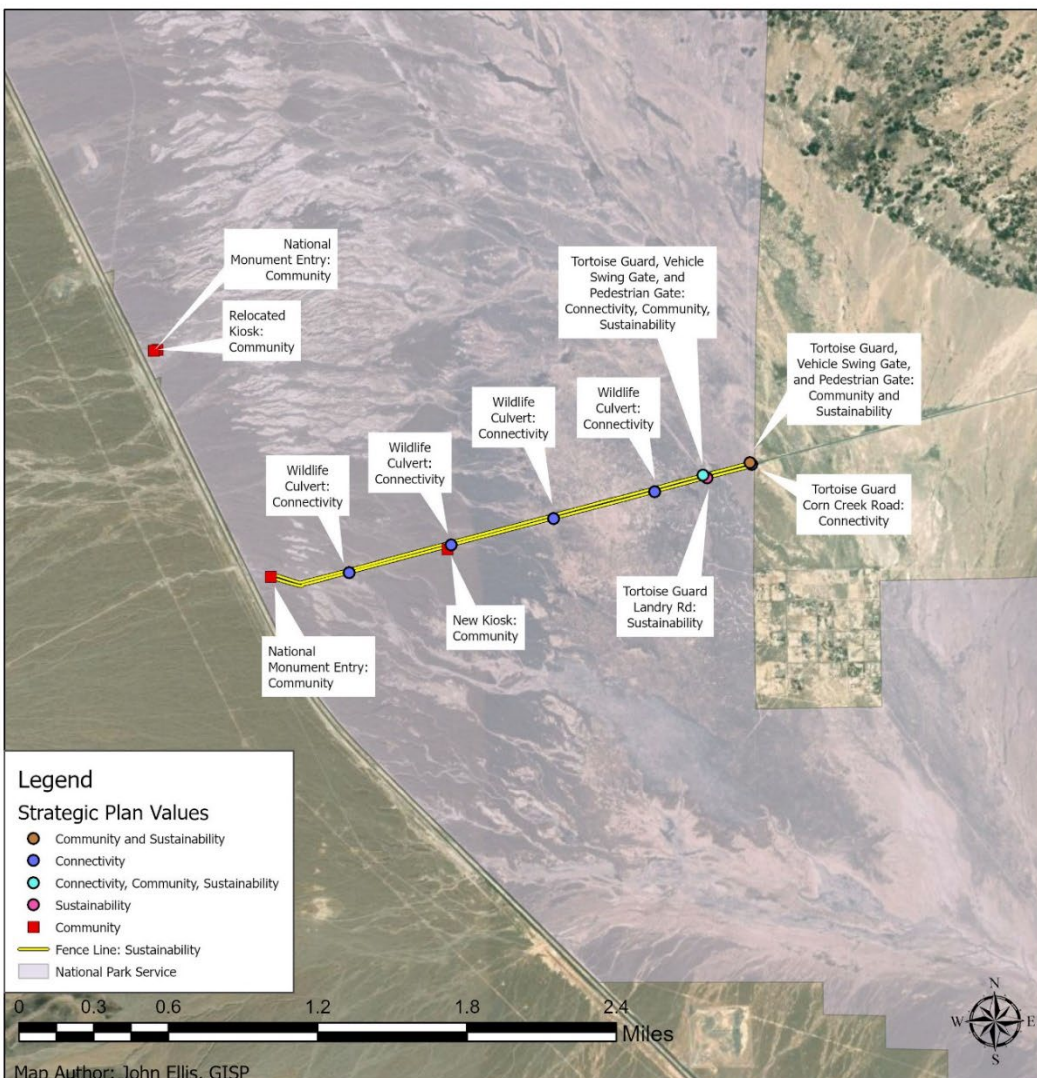
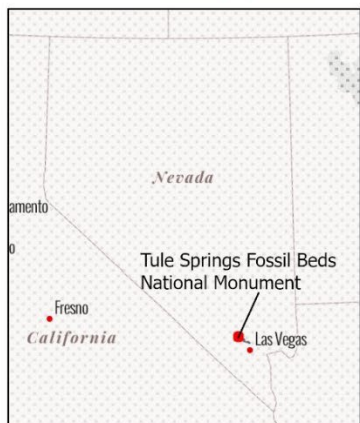
Clark County Dept of Aviation, California State Parks, Esri, HERE, Garmin, SafeGraph, FAO, METI/NASA, USGS, Bureau of Land Management, EPA, NPS, Esri, HERE, Garmin, FAO, NOAA, USGS, EPA, Maxar

Strategic Values Map Community, Connectivity and Sustainability

Clark County MSHCP
Desert Conservation Program
Round 20 Proposal

Tule Springs Enhancement and
Wildlife Protection Project
September 2023

Strategic Plan Values Map



Legend
Strategic Plan Values

- Community and Sustainability (orange circle)
- Connectivity (blue circle)
- Connectivity, Community, Sustainability (green circle)
- Sustainability (orange circle)
- Community (red square)
- Fence Line: Sustainability (yellow line)
- National Park Service (grey area)



Map Author: John Ellis, GISP
Clark County Dept of Aviation, California State Parks, Esri, HERE, Garmin, Swiftpoint, FAO, METI/NASA, USGS, Bureau of Land Management, EPA, NPS, Esri, HERE, Garmin, FAO, NOAA, USGS, EPA, Maxar

M. PHOTOS



Photo 1: Tule Spring National Monument Corn Creek entrance



Photo 2: Corn Creek Road West



Photo 3: Example post-and-cable tortoise fence



Photo 4: Swing gate location



Photo 5: Laundry Road tortoise guard location



Photo 6: Wildlife culvert example

N. PERFORMANCE MEASURES (PM)

SNPLMA FY2020-FY2024 STRATEGIC PLAN GOAL 1: Sustain the Quality of the Outdoor Environment by Conserving, Preserving, and Restoring Natural and Cultural Resources		
Performance Measures for Habitat Enhancement	Definition of Performance Measure	Quantity
H14 - Number of Threatened and Endangered Species Recovery Actions Implemented	Report the number of individual recovery actions performed for threatened or endangered species recovery as identified in recovery plans, conservation management plans, or land use planning documents. Include surveys, inventories, and monitoring as recovery actions. Note: One distinct action repeated 5 times over the course of the project would report as 1 action, not 5. The same recovery action conducted at distinct sites can be counted once for each site (this does not apply to individual plots within one single project site). The number of acres over which the actions were taken are reported under either H4 or H6. Report each action as one unit.	7
H15- Number of Conservation Actions Implemented for Non-Listed Species	Report the number of individual conservation actions for species not listed under the Endangered Species Act. Note: One distinct action repeated 5 times over the course of the project would report as 1 action, not 5. The same conservation action conducted at distinct sites can be counted once for each site (this does not apply to individual plots within one single project site). The number of acres over which the actions were taken are reported under either H4 or H6. Report each action as one unit.	2
H16 - Miles of Roads or Trails Decommissioned and/or Rehabilitated	Report the number of miles of roads and/or trails decommissioned and/or rehabilitated within all habitats (urban, upland, riparian, stream, trails in caves, etc.). Closure may include designation, signing, blockage by physical means, obliteration, etc. Report to the nearest whole mile.	0
H17 – Miles of Roads or Trails Surveyed, Inventoried, or Monitored	Report the number of miles of roads and/or trails inventoried or monitored. Report to the nearest whole mile or linear foot. Report to the nearest whole mile.	0
SNPLMA FY2020-FY2024 STRATEGIC PLAN: Other Performance Measures that Also Support the Three Values for SNPLMA Implementation of Sustainability, Connectivity, and Community		
Other Performance Measures	Definition of Performance Measures	Quantity
O9 – Number of GIS Databases Generated and/or Map Layers Produced	Report the number of GIS databases created and/or the number of map layers produced to identify the location of natural resources within the environment and provide mapping for use in educational programs. Report each database or map layer as one unit.	0
O10 – Number of Volunteers Used	Report the number of volunteers used in educational or interpretive programs and for surveying, monitoring, or restoration activities. Report each volunteer as one unit.	0

O. BLM CONSULTATION LETTER



United States Department of the Interior



BUREAU OF LAND MANAGEMENT

Southern Nevada District Office
4701 N. Torrey Pines Drive
Las Vegas, Nevada 89130
<http://www.blm.gov/nevada>

In Reply Refer To:
2710 (NVS00000)

Ms. Kimberley Jenkins
Principal Environmental Specialist
Desert Conservation Program
Clark County, Department of Environment and Sustainability
4701 West Russel Road
Las Vegas, Nevada 89118
Kimberley.Jenkins@ClarkCountyNV.gov

Dear Ms. Jenkins:

This correspondence acknowledges the participation of Clark County (County) in the Southern Nevada Public Land Management Act (SNPLMA) Round 20 Multi-Species Habitat Conservation Plan (MSHCP) consultation meeting held on October 3, 2023. I would like to thank the County for their continued partnership in the SNPLMA program for the development of MSHCP projects and for participating in Round 20.

The County has met the Bureau of Land Management (BLM) consultation requirement concerning the MSHCP Round 20 project nominations as described below.

Boulder City Conservation Easement Translocation Plan Update – The County proposes to determine the suitability of the Boulder Conservation Easement (BCCE) to accept additional tortoises above the limits identified in the 2014 and 2017 plan. The goal of the project is to develop a revised translocation plan that can be used as a guide for continued translocation of tortoises removed from construction sites to the BCCE. The proposal identifies the potential use of drones for data collection. The BLM does not have any protocols or approval processes required for drone use over BLM managed lands.

Because the proposed project does not involve ground disturbance or encroachments on BLM land, compliance with the National Environmental Policy Act is not required. In addition, per 36 CFR 800.3 (a)(1), this project has no potential to cause adverse effects to historic properties. No further compliance with Section 106 of the National Historic Preservation Act is required.

Connectivity Management Plan Implementation – This proposal is to implement actions identified in the 2022 Clark County Connectivity Management Plan. This includes surveying culverts along highways to determine which are passable by tortoises, attaching tortoise fencing to up to 30 prioritized culverts, begin recording data on how long before tortoises start using culverts, and a developing fire management plan for Clark County that focuses on reducing the risk of wildfire in high value desert tortoise habitat and connectivity corridors. BLM understands that Clark County will coordinate with appropriate federal agencies in the development of the fire management plan.

INTERIOR REGIONS 8 & 10 • LOWER COLORADO BASIN & CALIFORNIA-GREAT BASIN

ARIZONA, CALIFORNIA, NEVADA, OREGON*

* PARTIAL

While the proposed project does include some BLM managed lands, all ground disturbances would be within existing Nevada Department of Transportation (NDOT) rights-of-way. Please include coordination with BLM wildlife biologists during the evaluation and identification of the prioritized culverts.

This project is subject to the requirements of Section 106 of the National Historic Preservation Act. The SNPLMA program will assist with this process including coordination with the State Historic Preservation Office and consultation with federally recognized Indian Tribes.

Tule Springs Enhancement and Wildlife Protection – This proposal is to improve infrastructure, access, and wildlife protective measures along Corn Creek Road. This project does not involve any ground disturbance or encroachment on BLM managed lands. Corn Creek Road is a U.S. Fish and Wildlife Service (USFWS) road (casefile number N-93761). It is the BLM's understanding that the road is now jointly managed by both USFWS and Tule Springs National Monument, National Park Service (NPS). This project involves the installation of fencing, tortoise fencing, tortoise guards, culverts, kiosks, and relocation of a road sign from NDOT ROW to NPS lands.

This project is subject to the requirements of Section 106 of the National Historic Preservation Act. The SNPLMA program will assist with this process including coordination with the State Historic Preservation Office and consultation with federally recognized Indian Tribes.

Muddy River Restoration – This proposal is to conduct restoration work to reestablish native riparian and upland vegetation within the Muddy River Reserve Unit properties. The proposed project is located primarily on lands owned Clark County but does include proposed work on an existing head cut on the BLM parcel upstream of the project area.

Should this proposal be selected to receive SNPLMA funding, the portion of the proposal located on BLM managed land to stabilize an existing head cut will require coordination with the BLM to determine the appropriate authorization and any additional consultation needed consistent with NEPA. Bear in mind that the minimum amount of time to process a request through NEPA is 18 months or more. This project is subject to the requirements of Section 106 of the National Historic Preservation Act. The SNPLMA program will assist with this process including coordination with the State Historic Preservation Office and consultation with federally recognized Indian Tribes.

If you have any questions or comments regarding the consultation meeting or the MSHCP program please contact Michelle Leiber, SNPLMA Program Manager at 702-515-5168 or mleiber@blm.gov.

Sincerely,



Digitally signed by MICHAEL
CHATTERTON
Date: 2023.10.25 14:36:20 -07'00'

M. Ryan Chatterton
Acting District Manager

e-cc: Bruce Sillitoe, Field Manager, Las Vegas Field Office
Catrina Williams, Field Manager, Red Rock/Sloan Field Office
Michelle Leiber, SNPLMA Program Manager, SNPLMA Division

P. SUPPORT LETTERS

United States Department of the Interior



NATIONAL PARK SERVICE
 INTERIOR REGION 8
 TULE SPRINGS FOSSIL BEDS NATIONAL MONUMENT
 601 NEVADA HIGHWAY
 BOULDER CITY, NEVADA 89005



IN REPLY REFER TO:

October 31, 2023

Memorandum

To: Program Lead, SNPLMA Division

From: Derek Carter, Superintendent, Tule Springs Fossil Beds National Monument (TUSK)

Subject: Letter of Support for Clark County Rd 20 Project Proposal – Tule Springs Enhancement and Wildlife Protection

To Whom it May Concern:

I am pleased to be writing in support of the project titled "*Tule Springs Enhancement and Wildlife Protection*" being submitted by the Clark County Conservation Program for Round 20 proposals of the Southern Nevada Public Land Management Act (SNPLMA). We strongly support this project and the focus on continuing to improve infrastructure, access, and wildlife protective measures along Corn Creek Road, a major access point for the Tule Springs Fossil Beds National Monument. This project will enhance wildlife habitat through installation of wildlife protection measures and infrastructure to reducing illegal offroad activity; conduct public outreach through installation of signage that identifies agency land, installation of kiosks that emphasize resource protection importance, and communicate park rules to the public. The wildlife protective measures include Post and Cable fencing collocated with desert tortoise fencing, desert tortoise guards, wildlife culverts, vehicle swing gates, and pedestrian gates. All of these features are considered as integral parts of the fence.

We believe that this project is an ideal candidate and meets the strategic plan values of the SNPLMA program and hope that you will support this proposal.

Thank you for your consideration, and if you have any questions, please feel free to contact me at 702-902-0431 or derek_carter@nps.gov.

Digitally signed by
 DEREK CARTER
 Date: 2023.10.31
 13:18:00 -07'00'

Derek Carter
 Superintendent
 Tule Springs Fossil Beds National Monument



United States Department of the Interior

FISH AND WILDLIFE SERVICE
 Southern Nevada Fish and Wildlife Office
 4701 North Torrey Pines Drive
 Las Vegas, Nevada 89130



November 1, 2023
Sent electronically

Michelle Leiber
 SNPLMA MSHCP Program Manager
 Bureau of Land Management
 SNPLMA Division
 4701 N. Torrey Pines Dr.
 Las Vegas, Nevada 89130

RE: Letter of Support for Clark County's Southern Nevada Public Land Management Act Round 20
 Tule Springs Enhancement and Wildlife Protection Project

Dear Michelle Leiber:

I am pleased to provide this letter of support for the Clark County Desert Conservation Program's Round 20 nomination for the Tule Springs Enhancement and Wildlife Protection Project under the Multiple Species Habitat Conservation Plan (MSHCP) category. The Tule Springs Fossil Beds National Monument was designated in 2014, but still lacks the infrastructure necessary to properly protect the many resources that are within its boundaries, including several species covered under the MSHCP. The Desert Conservation Program recently completed the construction of a boundary fence along U.S. Highway 95, which included the installation of desert tortoise exclusionary fencing, tortoise guards, and pedestrian and vehicle access gates. This project would provide funding to extend that fencing and to install other wildlife protective infrastructure along Corn Creek Road, the main access road that runs through the Monument.

Despite its designation as a National Monument, the Tule Springs area is heavily impacted by unauthorized uses such as off-highway vehicle recreation, dumping, and target shooting. The protective measures proposed in this nomination would aid the National Park Service in curbing unauthorized activities and would allow for meaningful clean up and restoration to occur within the Monument. Wildlife protective infrastructure is sorely needed within the Monument to address these unauthorized activities and we urge the Partners Working Group and the Executive Committee to move this project forward for funding.

Please feel free to contact me should you have questions regarding U.S. Fish and Wildlife Service's support for this project.

Sincerely,

GLEN
 KNOWLES

Glen Knowles
 Field Supervisor

Digitally signed by
 GLEN KNOWLES
 Date: 2023.11.01
 09:48:09 -07'00'