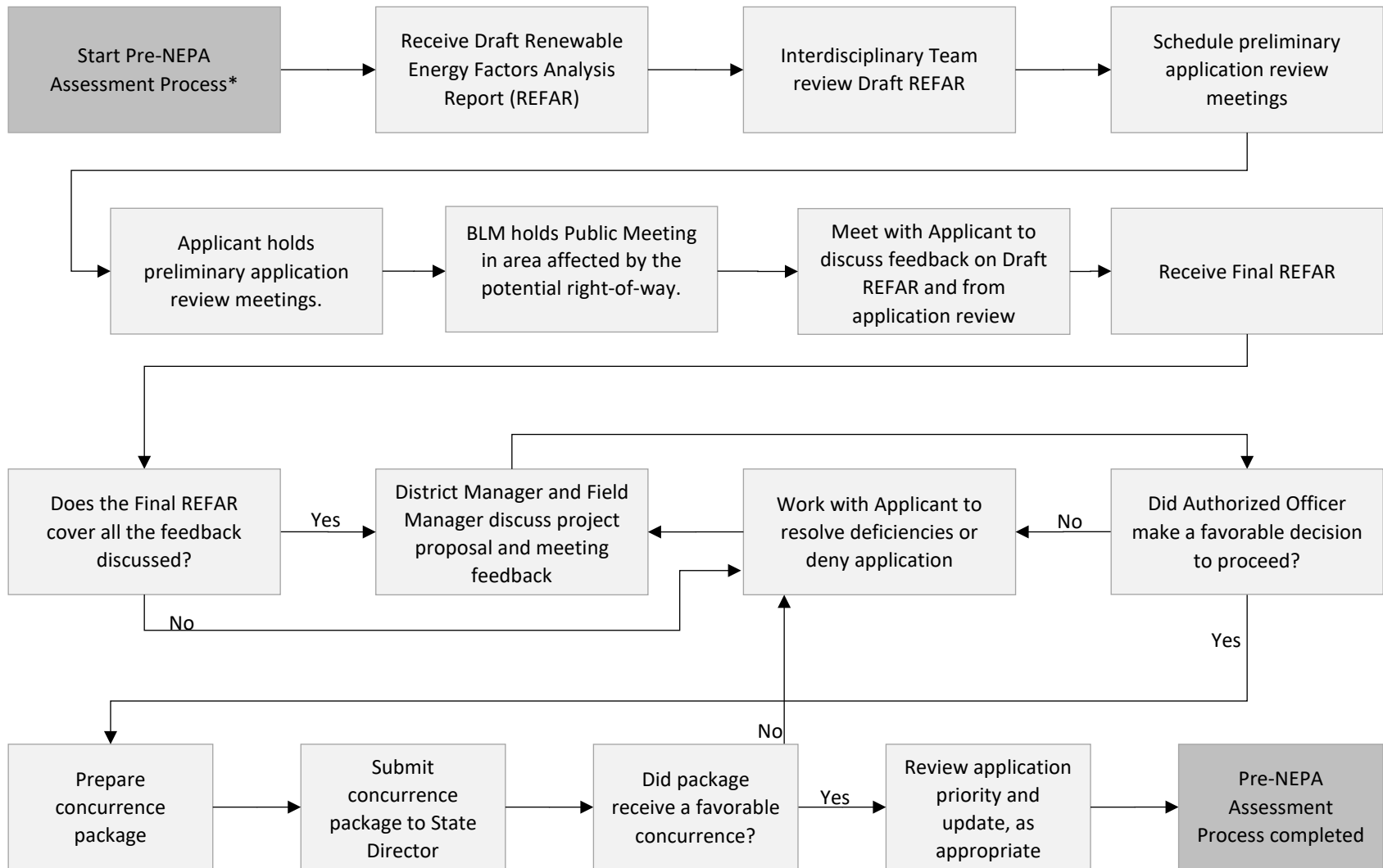


## ATTACHMENT 6 – PRE-NEPA ASSESSMENT PROCESS FLOWCHART



\*In order to start the Pre-NEPA Assessment Process: 1) the applicant must submit a sufficient application package and complete draft REFAR; and 2) the BLM must determine that the application is a high or medium priority or, if a low priority, review of higher priority applications has been completed.