



U.S. Department of the Interior  
Bureau of Land Management

# Utah Resource Advisory Council

Nov. 14-15, 2023

## Meeting Minutes

*Edge of the Cedars State Park Museum*

*Blanding, Utah*

*Canyon Country District*

## Meeting Attendees

- **Utah Resource Advisory Council Members:** Gregory Sheehan (DFO), Tyler Thompson (Chair), Clif Koontz (Vice Chair), Neal Clark (virtual), Richard Draney, Patrick Hearty, Joan Hayes, Cameron Crutch (virtual)
- **BLM Employees:** Rachel Wootton, Katie Stevens, Jennifer Jones, Jake Palma, Nicolle Gaddis-Wyatt, Evan Glenn, Cindy Gallo, Jeremy Dyer, Angela Hawkins (virtual), Sam Hodges
- **Public Present:** Kendall Laws, Larry Ellertson (virtual), Laura Peterson (virtual)

## Welcome and Introductions

Designated Federal Officer, Greg Sheehan  
Council Chair, Tyler Thompson

## BLM Utah Projects Overview

*Designated Federal Officer, Utah State Director Greg Sheehan*

- **State Update:** Went on field trip to Swinging Bridge at the last meeting in Vernal.
- **Fire season:**
  - Very low burn year on BLM. Usually, we have 37,000 acres burn per year; this year 5,800 burned in Utah.
  - We can attribute the low acreage fire year to many different things: more fuels treatment and a high-water year.
  - Tyler Thompson - We expected to see more fires in southwestern Utah.
  - Firefighters were dispatched to Canada, Oregon and Washington this summer.
  - Fire history data shows historically the summer following a very wet year makes for a large fire year. We anticipate a busy fire year next summer.
- **Wild Horse and Burros:**
  - BLM is capturing more horses than they can adopt out.

- Hoping this year to realign budgets and step up adoption program for wild horse and burros.
- Canyon Country District has no wild horses.
- Fertility control performed during horse gathers but these are not permanent solutions. The BLM does this typically with helicopters but also with darting programs.
- Discussed Wild Horse and Burro funding which comes at the cost of other programs. \$147 million for Wild Horse and Burros annually.
- **Management Plans & Travel Management Plan (TMP):**
  - Grand Staircase-Escalante draft management plan open comment period has ended, no updates.
  - Final decision on Labyrinth Canyon Gemini Bridges TMP came down in September.
- **Gas and Mineral Leases:**
  - Geothermal gas lease sale in northeastern Utah at the beginning of 2025.
  - Discussed geothermal fracking. Planning to continue geothermal energy production and development.
- **Paleontological Indictments:**
  - October 19<sup>th</sup>, indictments on federal case for paleontological resources being sold internationally, taken from one hour north of Moab.
  - Four individuals indicted. Following case closely.
- **Other:**
  - Nothing new on the Public Lands Rule.
  - Evan Glenn – 7,000 public comments were received for the Grand Staircase Escalante management plan.

## Utah RAC Membership Updates

*Designated Federal Officer, Utah State Director Greg Sheehan*

- **Vacancies in RAC membership, Monument Advisory Council vacancies.**
  - Looking for nominations for Bears Ears, San Rafael Swell, Grand Staircase. Nominations must be received by Nov. 24<sup>th</sup>.
  - Four openings coming up January 28<sup>th</sup>.
  - Awaiting selection approval, coordinating with Governor's office, expect to take 3-6 months to make decisions.

## Canyon Country District Planning Updates

*Canyon Country District Manager Nicollee Gaddis-Wyatt*

- **Canyon Country District (CCD)**
  - 140 employees when fully staffed.
  - Canyon Country District partnered with CNHA and purchased employee housing in Moab.
  - National Recreation Blueprint- Housing scarcity is major issue to be addressed.
  - Grand County has 10,000 residents, 3 million visitors per year.
  - Many folks are relying on public lands for their housing.
  - San Juan County has 16,000 residents with 600,000 visitors per year.
  - 1.3 million acres of Monticello field office is Bears Ears National Monument.
- **Law Enforcement CCD**
  - Partners with San Juan County Sheriff. 1 supervisor and 4 field Law Enforcement Rangers.

- Paleo case, worked with multiple partners.
- Eclipse went very well due to pre-planning and staff.
- **Fire and Fuels CCD**
  - 58 fires, 2000 acres burned.
  - Most started by lightning.
  - 12,000 acres of fuels treatment.
  - Helicopter flew 190 hours in 3 months for fire and fuels support.
- **Artist and Residents Program**
  - 3-month residence on CCD.
  - CNHA helps fund this program.
- **Paleontology**
  - Mill canyon track site: replaced old wooden boardwalk with smooth concrete walkway.
  - Moab paleontology case underway.
- **Other**
  - Travel Management Planning in progress.
  - Silver spot butterfly lives only in Onion Creek campground. MFO helping to protect.
  - Wildlife staff working on guzzlers for Big Horn Sheep.
  - Cultural staff working hand and hand with tribes and other partners to help make information available to visitors. Cleaning graffiti.
  - Grazing: helping protect landscapes while allowing for multiple uses.
  - Bluff River Trail almost finished.

## Travel Management Updates

*Assistant Moab Field Manager Katie Stevens*

- **Labyrinth Gemini Bridges Travel Management Plan (TMP)**
  - 3 different TMP areas in the Moab Field Office (MFO). Canyon Rims, Labyrinth Canyon/Gemini Bridges (LCGB) and The Dolores Triangle.
  - September 28<sup>th</sup>, LCGB TMP signed.
  - 820 miles of road left open in the LCGB TMP. This TMP encompasses 16% of Moab Field office. Labyrinth Canyon Gemini Bridges area is 303,000 acres.
  - TMP only applies to motorized users. Therefore, roads can be used by authorized users, grazing, powerline operators, etc.
  - Every route was considered in this region.
  - Most of the roads that were closed were redundant roads, which for recreators leads to confusion. The level of use was looked at, drivability, conflicts with various resources, wildlife. Mostly Desert bighorn sheep. Moab heard is the only endemic bighorn sheep population. Archeological resources were taken into consideration as well as user conflicts.
  - There are 671 miles of road used for Easter Jeep Safari (EJS). 651 miles of EJS routes are still available in MFO.
  - Resource Specialists helped with what the alternatives should look like.
  - The term Off Highway Vehicle (OHV) applies to all public motor vehicles (Jeeps, trucks, razors, motorcycles, E-Bikes).
  - Cooperating agencies: PLPCO, Grand County & Utah Trust Lands.
  - 12,000 public comments for the EA. Major comment topics: retain motorized access, economic impact of closing routes, recreation conflicts between user groups, impact of OHVs on resources (wildlife habitat, riparian areas, archeological resources)

- There is a lot of misinformation circulating about the TMP.
- All information about the TMP is available on the ePlanning website.
- 11 TMPs in Utah, MFO had 3 of them.
- **RAC Comments and Discussion**
  - Discussed challenges of informing the public on the status of the TMP.
  - The stay will be granted or denied no later than Dec.14<sup>th</sup>.
  - The BLM needs to fine tune the message we put out to the public about TMP. There is a lot of misinformation about the TMP.

## Recreation Updates: Monticello

*Assistant Monticello Field Manager Rachel Wootton*

- **Monticello Field Office and Bears Ears**
  - Team of 17 people.
  - Kane Gulch, remote ranger station open in spring and fall. Mostly people looking for backcountry information visit this VC. Staffed by both volunteers and rangers.
  - Sand Island ranger station and campground. Put in for the San Juan River.
  - Housing at both Kane Gulch and Sand Island.
  - 110 miles of nonmotorized trails, 250 miles of motorized trails.
  - 22 vault toilets. 7 campgrounds, 4 paid.
- **Projects and initiatives**
  - Eclipse: volunteers, archeologists, and rangers helped to protect resources.
  - Junior Ranger book: archeologists and rangers created the Jr. Ranger book.
  - CyArk virtual tours of cultural sites: Mule Canyon and House on Fire are the areas for which you can do a virtual tour.
  - Natural Resources field day: CNHA is helping with funding for scholarships for the field day. Geared towards students. Annual event.
  - Current planning going on for Bears Ears NM.
  - Looking at improving visitor services and improvements to signage.

## Recreation Updates: Moab

*Assistant Moab Field Manager Jenn Jones*

- **Canyon Country Recreation Programs**
  - Hwy 191 traffic count: between 2005-2023, highest peak is in 2021. Visitation is generally 140,000 vehicles per week at the highest visitation.
  - E-commerce is one way that the MFO is making public lands easier and more accessible for people.
    - Remote Off-Grid Kiosk (ROK) is a kiosk that you can pay for your campsite using a credit card. Powered by solar.
    - These devices are expensive but make the payment of fees much more convenient for both the agency and the public. This gives the public an option to use electronic payments.
    - These payments are processed via cellular data or satellite data.
    - ROK machines save time and money in the long run.
    - ROKs have multiple languages.



- Scan and donate may be an option for folks to give back to areas where we do not have a fee.
- **Campground improvements**
  - Always looking at Trail Head improvements. Trying to stay away from wood signage and kiosks, moving towards steel infrastructure since there is considerably less upkeep.
  - MFO has 44 developed campgrounds which requires a large camp host program.
  - Installed new bike maintenance stations at several mountain bike trail heads.
  - 177,000 gallons of sewage was pumped in the MFO this year.
  - Mud Springs trail system in San Juan County is moving forward.
- **Partners**
  - Grand County and San Juan County have been important partners with the BLM.
  - Grand County received Gold Standard LNT award from LeaveNoTrace.org.
  - Partnering with many different community orgs. Mostly nonprofits.
- **Trash and toilets**
  - Trash and pumping toilets cost the Moab Field Office \$80K in 2019 & \$175K in 2023.
  - 25,000 rolls of toilet paper just in MFO.
- **Updates on the horizon**
  - Kokopelli campground is ready to go with new toilets.
  - Dewey Bridge boat ramp improvement project.
  - Getting rid of wooden kiosks and replacing them with steel
  - Improve group sites and campgrounds to be more inclusive, ADA accessible.
- **Grand County ordinance to pack out human waste.**
  - Grand County Trail Mix is helping with awareness and compliance via social media and trail ambassadors.
  - Grand county solid waste district requires human waste bags to be dropped off in designated receptacles.
  - MFO if fully staffed would have 21 staff. This is a small number of staff for all that happens in the MFO.

## **Bears Ears National Monument Update**

*Monticello Field Manager Jake Palma*

- **Monticello field office**
  - Monticello FO is 1,785,127 acres. 1.1 million acres is in Bears Ears National Monument (BENM).
  - 37 employees in Bears Ears NM.
  - Utah Trust Lands and BLM are in the process of trading out Trust Lands parcels for BLM parcels.
  - Visitation in the Monticello FO peaked in 2021 as of now. Trending high visitation.
  - Visitation in 2023 so far is 493,543. In 2021, visitation was 619,908.
  - Newspaper Rock is the most visited site in the BENM, with over 50% of visitation to the Monticello field office in the Indian Creek corridor.
  - Many people have a connection to Bears Ears. Tribal descendant communities since time immemorial have been coming to this area. Mormon pioneers do as well, (Hole in the rock)
  - Many uses in the Bears Ears landscape: balloon festival, San Juan Hill (Mormon Road), ranching, rock climbing, hunting, fiber optic lines providing internet to remote communities, wood collection.
  - Monticello Field Office sells over 2,000 wood cutting permits.

- **Bears Ears RMPs and TMP**

- In 2016, Bears Ears was designated. In 2017, the December proclamation modified the monument and shrunk it by 85%. In 2021, Bears Ears was expanded larger than the original boundaries.
- Cooperative management agreement with Pueblo of Zuni, Hopi Tribe, Navajo, Ute Tribe, Ute Mountain Ute. This is a very important entity with which the BLM works.
- Existing management plans for Bears Ears
  - 2008 Monticello Resource Management Plan.
  - 2020 Bears Ears National Monument Management Plan
  - 1986 National Forest Resource Management Plan
  - 2022 Bears Ears National Monument Management Plan
- New management plan for Bears Ears approximate schedule
  - November 2023—Draft RMP issued/comment period.
  - Summer 2024—proposed RMP and Final EIS/comment period.
  - Fall 2024—approved RMP.
- There will be 7 public meeting, 2 virtual, 5 in person. In person will be in: Blanding, Salt Lake City, Monticello, Flagstaff and Albuquerque.
- There will be a TMP in Bears Ears after the RMP.

- **Council discussion**

- Council wondering if the Tribes all agree with the one tribal representative that represents them to the BLM.

## **Public Comment Period**

- Larry Ellertson: Interest in what ends up happening with the Labyrinth Canyon Gemini Bridges TMP. Working to try and preserve some of the routes that are closed. Interested to see the plans that are coming out in Bears Ears. Thanked everyone for what they do.

## **Public Comment How-To**

*Canyon Country District Manager Nicollee Gaddis-Wyatt*

- **Substantive public comments are important**

- Identify a problem.
- Identify why it's a problem.
- Provide a solution.
- Line out, "this is an issue, this is why it's an issue, this is the solution".
- ePlanning: reach out whenever. Before or after the comment period.
- It is much easier for the BLM to field comments via ePlanning, as it streamlines the comments and ensures that your comments are not lost.
- Take advantage of public meetings.
- Get all the facts before you submit you comments.
- Share information to friends and family.

- **RAC questions, comments and discussion**

- Tyler Thompson: The public needs to know that "form" comments often get counted as one comment. Concerns about AI and the use of it may be harming public comments. Concerned that the public comment system is broken.
- Clif Koontz: AI could be used to identify unique comments? Put the unique part of a comment on a form letter at the top so the BLM can see it first.

- Jake Palma: Developing a flyer of sorts to explain to the public how to submit public comments.
- Katie Stevens: Gave example of how public comments helped inform the BLM on something the BLM missed.

## **Wrap up discussion**

- Future RAC meetings:
  - March 20-21, 2024, in St. George.
  - Aug. 14-15, 2024, in Logan/Bear Lake.
- Potential future agenda items:
  - Northern Corridor update.
  - Public Lands Policy update/when comes out.
  - Grant opportunities for the BLM.
  - Recreation & fee updates.
  - Action items, if any.
  - New RAC member(s).
  - RMP updates.
  - BENM RMP updates.

Two handwritten signatures in black ink. The first signature on the left is a stylized, cursive 'J' followed by a horizontal line. The second signature on the right is a more complex, flowing cursive script that ends with a long horizontal line.



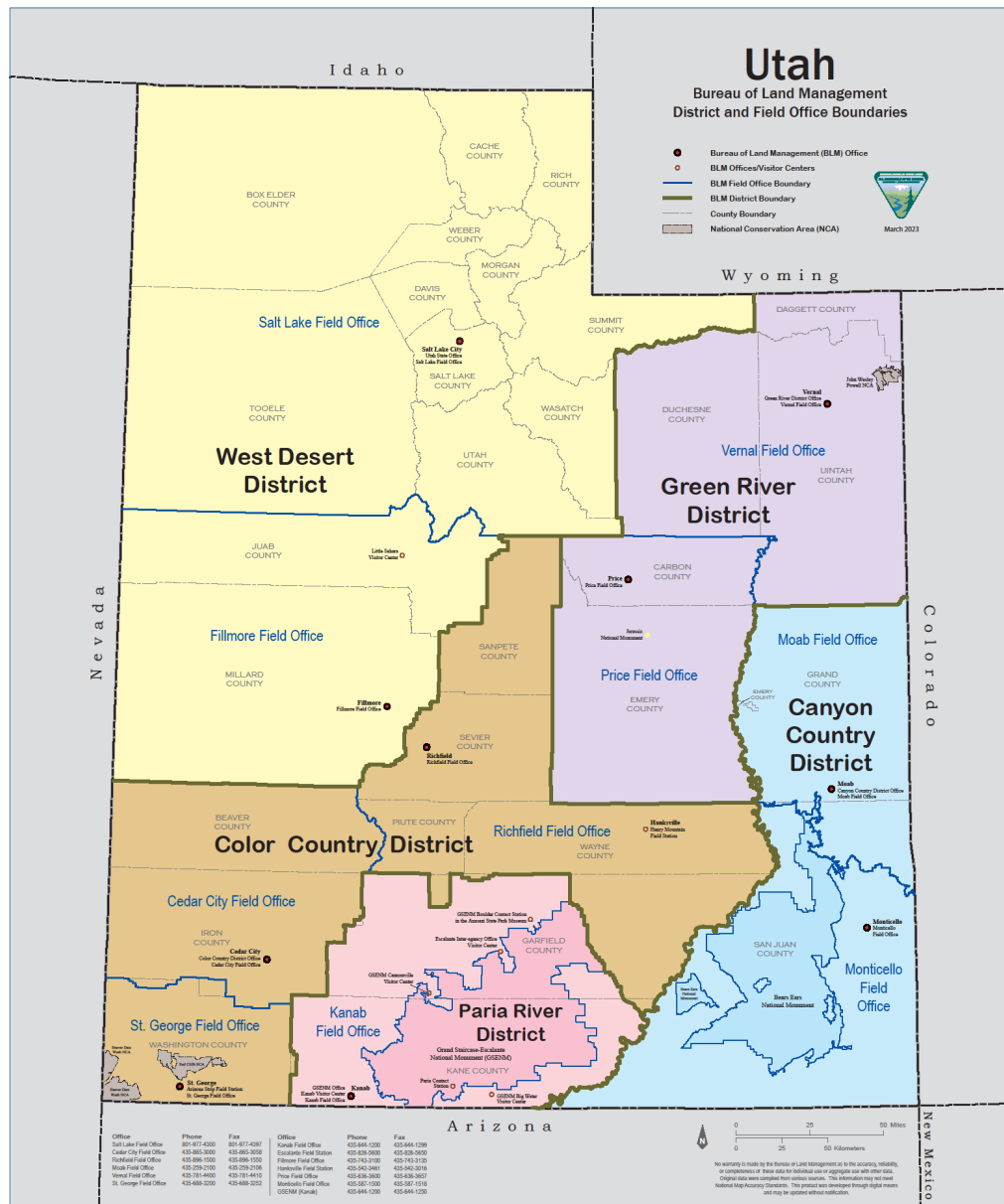
U.S. Department of the Interior  
Bureau of Land Management

# Canyon County District

## Utah Resource Advisory Council Nov. 14 2023







## Canyon Country District

- Moab and Monticello Field Offices
- Covers San Juan County and Grand County
- 3.6 million planning acres
- Approximately 140 employees



# CCD Management Team

- ❖ District Manager: Nicollee Gaddis-Wyatt
- ❖ Assistant District Manager: Marie McGann
- ❖ Law Enforcement Supervisor: Dave Hoeper
- ❖ Fire Management Officer: Chris Deets
- ❖ Moab Field Manager: Dave Pals
- ❖ Monticello Field Manager: Jake Palma



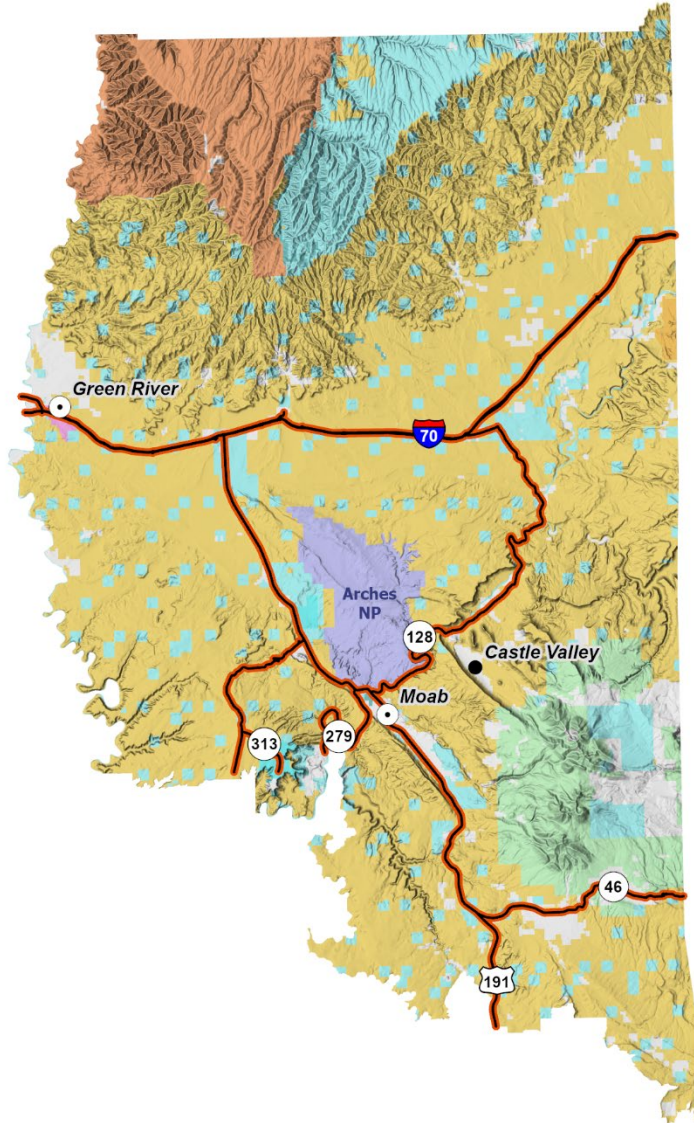


# Grand County

- Grand County's population is approx. 10,000 residents.
- The BLM-managed lands within Grand County host nearly three million visitors a year.
- Existing and planned accommodations are still not enough to meet the visitor demands.
- Many people live in vans, recreational vehicles, campers full time. Anecdotally, many of these individuals are employed in the visitor services/recreation industries.
- Many van lifers, or 'full timers' work jobs in the community or telework and work remotely from areas that have cellular connectivity.



# Moab Field Office



- 1.8 million surface acres
- The Moab Field Office is a mecca for recreation, including off-highway vehicles, mountain biking, climbing, base jumping, hiking, horse-back riding, and river rafting.





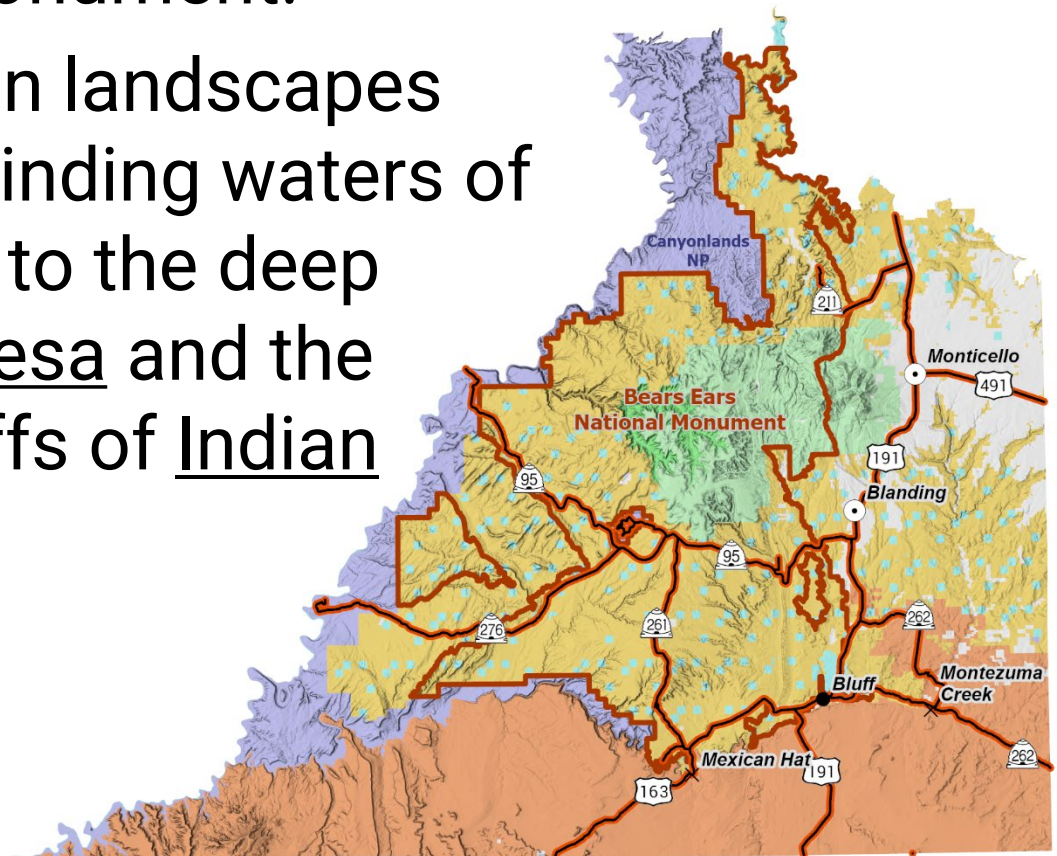
# San Juan County

- San Juan County population approximately 16,000 residents.
- BLM-managed public lands in San Juan County host approximately 600,000 visitors a year.
- A majority of visitors to BLM-managed public lands in this area are spending time in Bears Ears National Monument.
- Towns are small and have limited housing stock (short term/long term rentals).



# Monticello Field Office

- 1.8 million surface acres.
  - 1.3 million acres make up Bears Ears National Monument.
- These acres contain landscapes ranging from the winding waters of the San Juan River to the deep gorges of Cedar Mesa and the sheer, dramatic cliffs of Indian Creek.





# Law Enforcement

- Partnerships with Grand and San Juan County Sheriff and Moab City Police.
- Assist with Search and Rescue
  - Formal and Informal
- Details to the border and other offices
- Paleo Case with multiple partners
- Eclipse
- Routine enforcement and public safety





U.S. Department of the Interior  
Bureau of Land Management







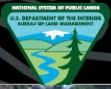
# Fire and Fuels

## Moab Interagency Fire Center

- 58 fires/2000 acres
- 12,000 acres fuels treatment
- Helicopter flew 190 hours in 3 months
- Assisted Canada, Idaho, Montana, and Texas
- 34 fire staff members visited South Canyon Fire Memorial in Glenwood Springs, Colorado







U.S. Department of the Interior  
Bureau of Land Management







# Artist in Residence



H. Walck



October 2022

Canyon Country District Artist in Residence





U.S. Department of the Interior  
Bureau of Land Management

# Paleontology





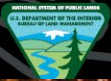


U.S. Department of the Interior  
Bureau of Land Management

# Other Hot Topics







U.S. Department of the Interior  
Bureau of Land Management







U.S. Department of the Interior  
Bureau of Land Management

---

# Labyrinth - Gemini Bridges Travel Management Plan

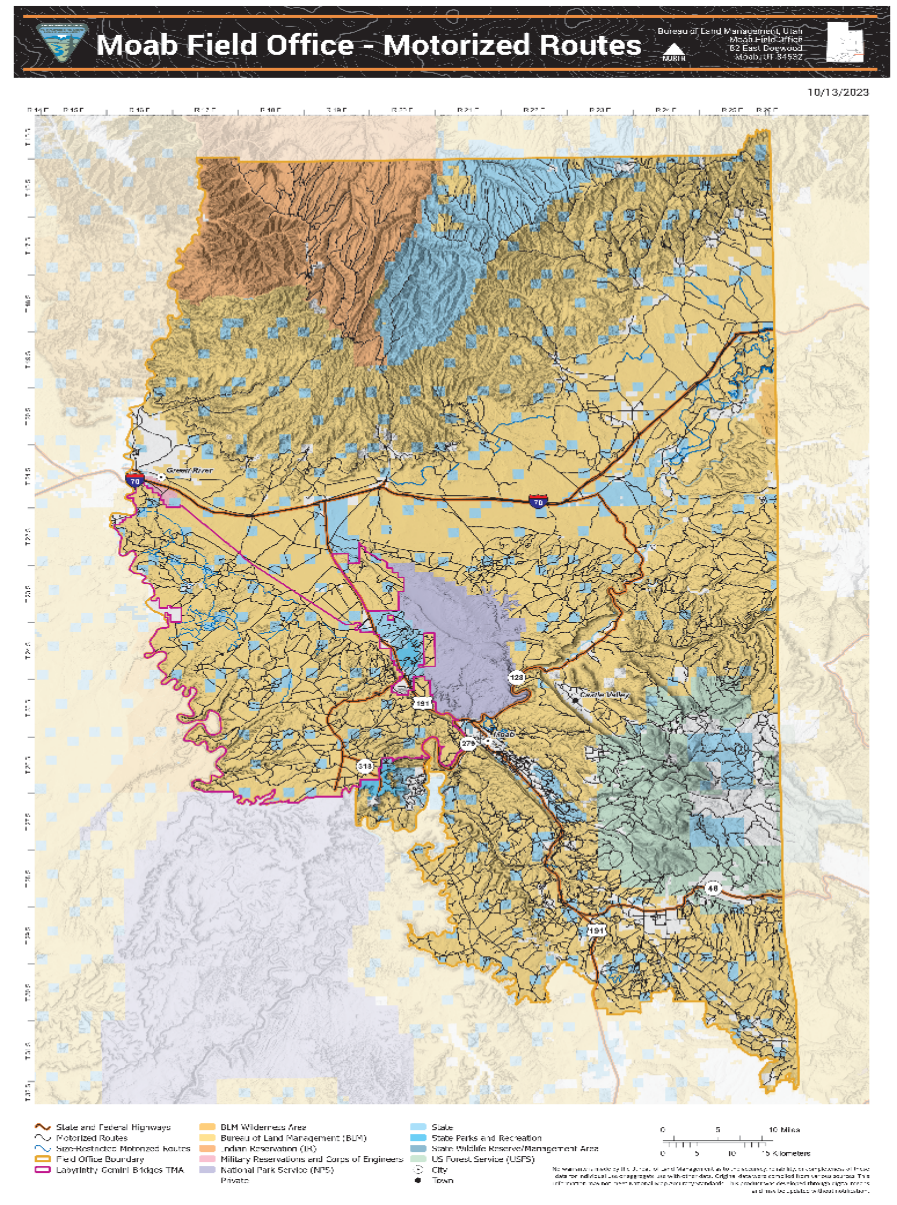
---







# Map Showing All Routes Open in Moab Field Office, with TMP Highlighted

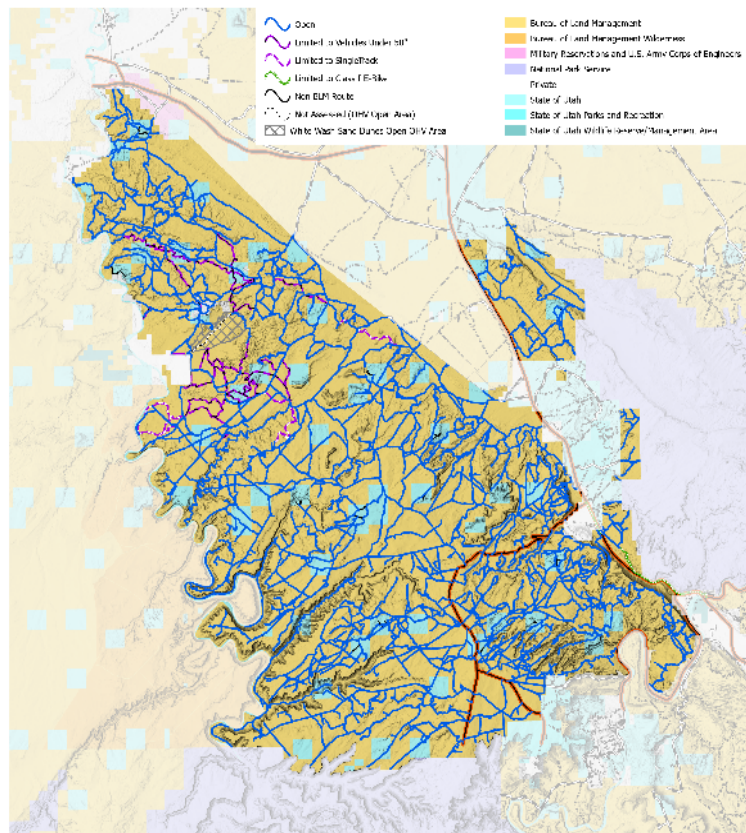




# Labyrinth Designations: Pre-Decision Map and Decision Map



10/31/2023

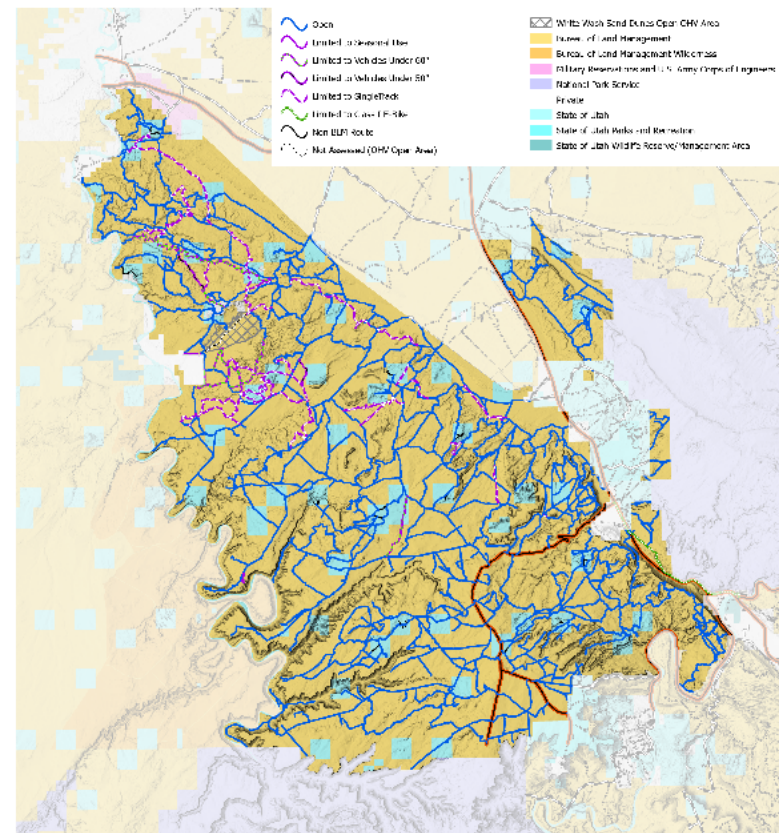


Scale: 1:500,000 0 8 Miles

No warranty is made by the Bureau of Land Management as to the accuracy, reliability, or completeness of these data for use in any other application than that for which they were collected. This information may not meet National Map Accuracy Standards. This product was developed from digital data and may be updated without notification.



10/31/2023



Scale: 1:500,000 0 8 Miles

No warranty is made by the Bureau of Land Management as to the accuracy, reliability, or completeness of these data for use in any other application than that for which they were collected. This information may not meet National Map Accuracy Standards. This product was developed from digital data and may be updated without notification.



# **Travel Management Area (TMA)**

**The Travel Management Area consists of 303,000 acres of BLM land to the northwest of Moab (16% of the Field Office acreage). In the 2008 Moab Travel Plan, 1,127 miles of route were designated within the TMA. The 2017 Settlement required BLM to re-examine the motorized travel network in this location.**

**Four alternatives (four travel networks) were developed during the NEPA process.**



# **Crafting a Travel Plan**

**The Travel Plan applies only to the motorized recreating public; authorized users are not subject to it.**

**Each route was examined for its purpose and need, its redundancy, its level of use, its drivability and its conflicts with various resources. Four alternatives) were developed by placing routes in one or more alternatives.**

**Many of the routes excluded from one or more alternatives are reclaiming, redundant and result in confusion on the part of the user.**



# **Jeep Safari Routes in the Labyrinth TMP**

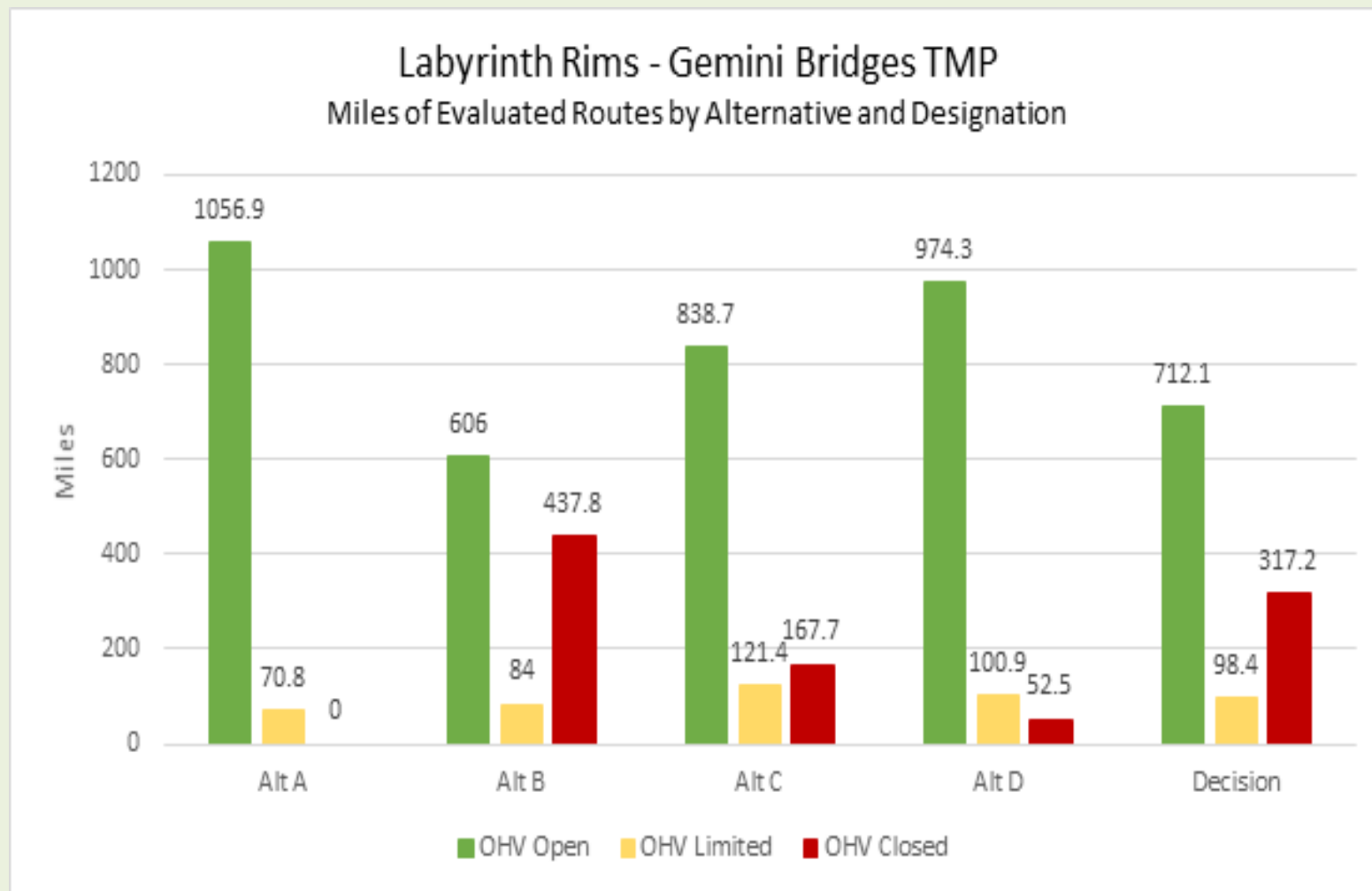
**Jeep Safari Routes in Moab FO = 671 miles; approximately 300 miles of these are in the Labyrinth TMP**

**In the Decision, approximately 280 miles of the Jeep Safari routes are available within the TMP area, for a total of 651 miles of Jeep Safari route in the Moab Field Office.**





# Route Network Designations





# Cooperating Agency Input

- **Grand County:**
  - Asked that BLM lessen conflict between motorized and non-motorized users.
  - Asked that BLM lessen impacts on cultural, riparian and wildlife resources.
  - Provided specific list of routes to consider closing.
  - BLM closed an additional 73 miles of route in Alternative B, for a total of 437 miles closed in that Alternative (317 of these were closed in Decision)
- **PLPCO**
  - Asserted R.S. 2477 ROWs on 31 routes be open under all alternatives
  - BLM kept these 21 routes open in at least one alternative. Ten of these routes are closed in the decision
- **Utah Trust Lands Administration (SITLA)**
  - Maintain access to State Lands
  - Noted 7 routes in Alternative B, and 2 routes in Alternative C to keep open
  - BLM kept the 9 routes open in one alternative; four of these were closed in the decision



# Summary of Public Input

- Retain motorized access
- Economic impacts of closing routes
- Recreation conflicts
- Resource conflicts/ impacts of OHV on resources (wildlife habitat, riparian, soils, water, cultural)





# High-Profile Routes Open in Decision

- **Hellroaring Rim**
- **Poison Spider/Golden Spike/Gold Bar Rim**
- **Rusty Nail/Where Eagles Dare**
- **Metal Masher**
- **Gemini Bridges**
- **Copper Ridge**
- **Seven Mile Rim/Uranium Arch/Buttes and Towers**
- **Secret Spire/Dellenbaugh Tunnel**
- **Crystal Geyser**
- **Wipeout Hill**
- **3D (excluding Mashed Potatoes)**
- **Approximately 100 miles of route designated for motorcycles/UTVs – largely near White Wash Sand Dunes**



**[All documents about the project available on eplanning:](https://eplanning.blm.gov/eplanning-ui/project/2001224/510)**

**<https://eplanning.blm.gov/eplanning-ui/project/2001224/510>**











U.S. Department of the Interior  
Bureau of Land Management

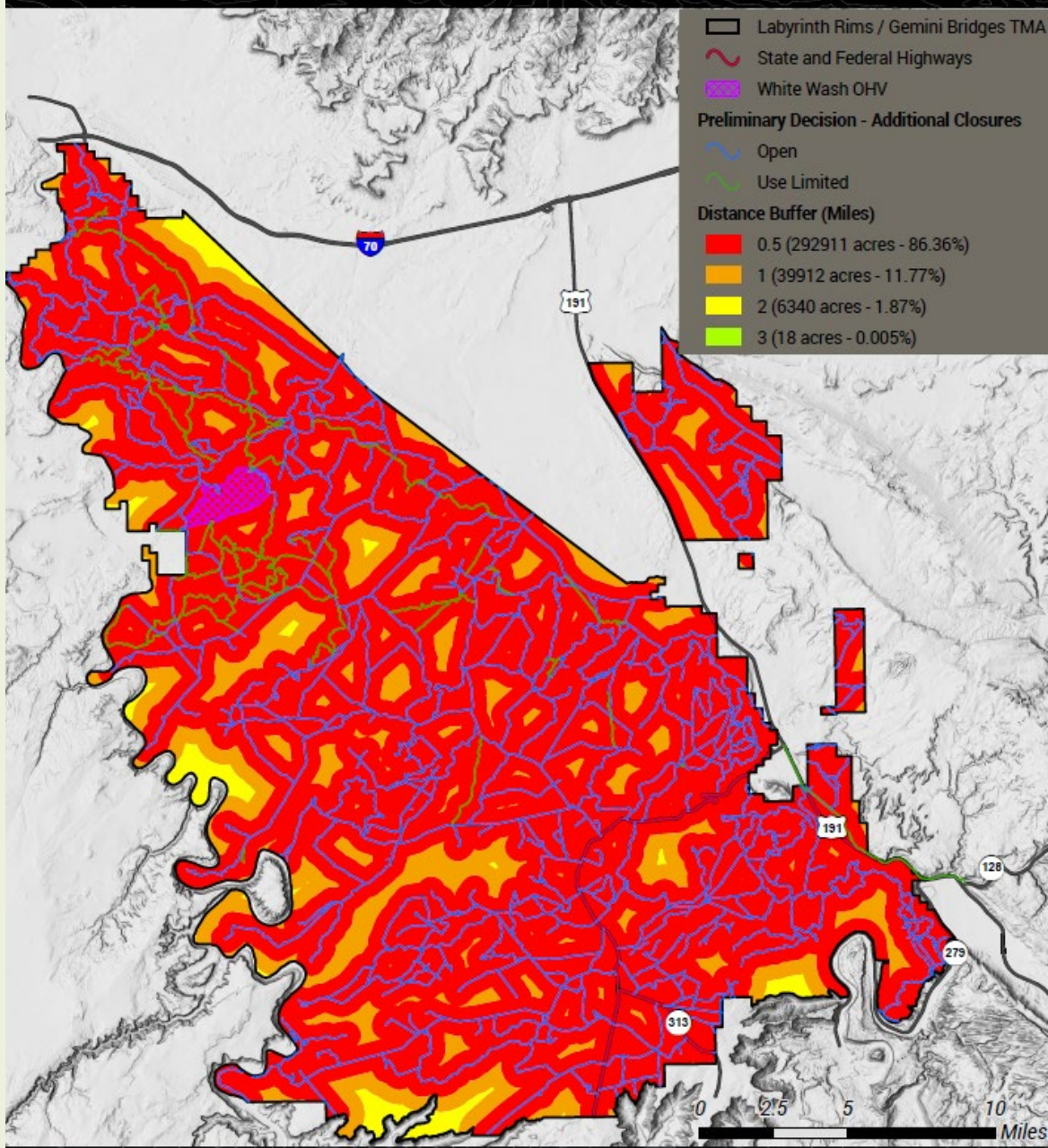
## Road Buffers:

**Acreage distant from  
a road in the Chosen  
Travel Network  
(Decision)**



## Labyrinth Rims / Gemini Bridges TMP

Distance Buffer - Preliminary Decision - Additional Closures

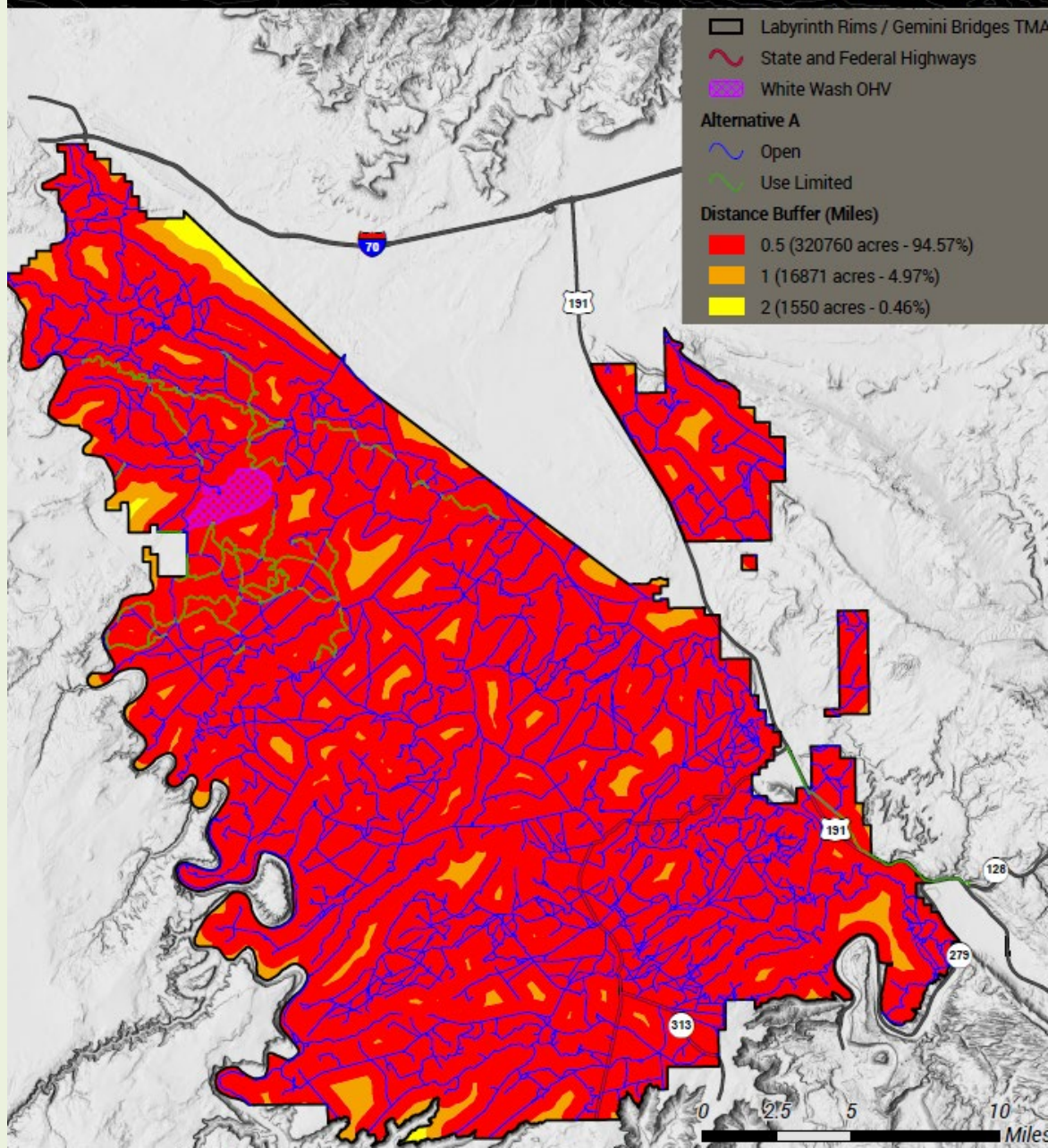






## Road Buffers:

**Acreage distant from  
a road in the No  
Action Alternative**







# High-Profile Routes Closed in Decision

- **Ten Mile Wash**
- **Hey Joe Jeep Safari Route (Closed along the Green River)**
- **Green River Overlook Roads (some closed)**
- **Dead Cow/Tubes**
- **Hell Roaring Canyon**
- **Day Canyon Point**



## **Jeep Safari Routes**

•route name/number and length of each Jeep Safari route that being **closed** in the DR)

**Hey Joe** – D1527A – 0.48 miles and D1527B – 8.4 miles; Total miles closed = 8.88 miles

**Day Canyon Point** – D1625A – 0.87 miles; D1625B – 3.2 miles; D1627 – 0.589 miles;

D1630 – 0.46 miles; Total miles closed – 5.12 miles

**3D (partial)** – D2491 – 0.62 miles; D2562 – 2.21 miles; Total – 2.83 miles

**Wipe Out Hill (partial)**- D2377 – 0.01 miles (total)

**The Pickle (partial)** – D2491 (0.62 miles) and D2562 (2.2 miles); Total – 2.84 miles

**Backward Bill (partial)** – D2375 – 1.95 miles; D2377 – 0.01 miles; D2450A – 0.29 miles;

Total – 2.25 miles

**Seven Mile (partial)** – D2437 – 0.34 miles (total)

**Hell Roaring Rim (partial)** – D1284 – 0.01 miles (total)

**Dead Man Point (partial)** – D1507 – 0.19 miles; D2014 – 1.98 miles; Total = 2.17 miles

**Dead Man Springs (partial)** – D2014 – 1.98 miles; D2030 – 0.13 miles; D2031 – 1.5 miles; D2035 – 0.89 miles: Total = 4.5 miles

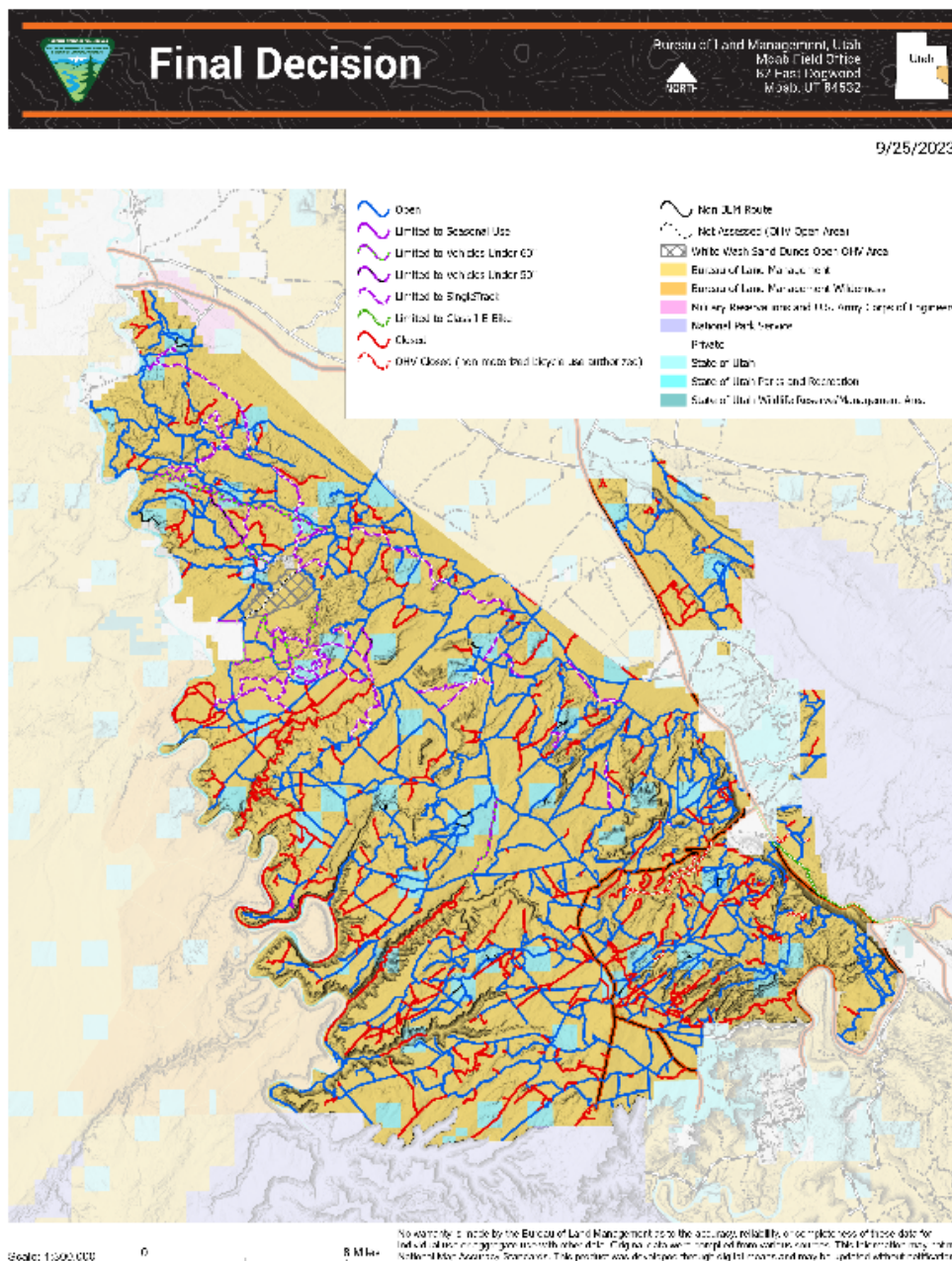
**Crystal Geyser (partial)** – D2719 – 0.15 miles; D2999 – 0.04 miles; D3174 – 0.06 miles:

Total = 0.25 miles





# Map of TMP Decision Area







U.S. Department of the Interior  
Bureau of Land Management

# Canyon Country Recreation Programs

BLM Utah Resource Advisory Council Presentation – November 2023





# Overview

## Moab Field Office Updates:

- Fee Program Implementation
- Recreation Program Updates
- On the Horizon

## Monticello Field Office Updates:

- Fee Program Implementation
- Recreation Program Updates





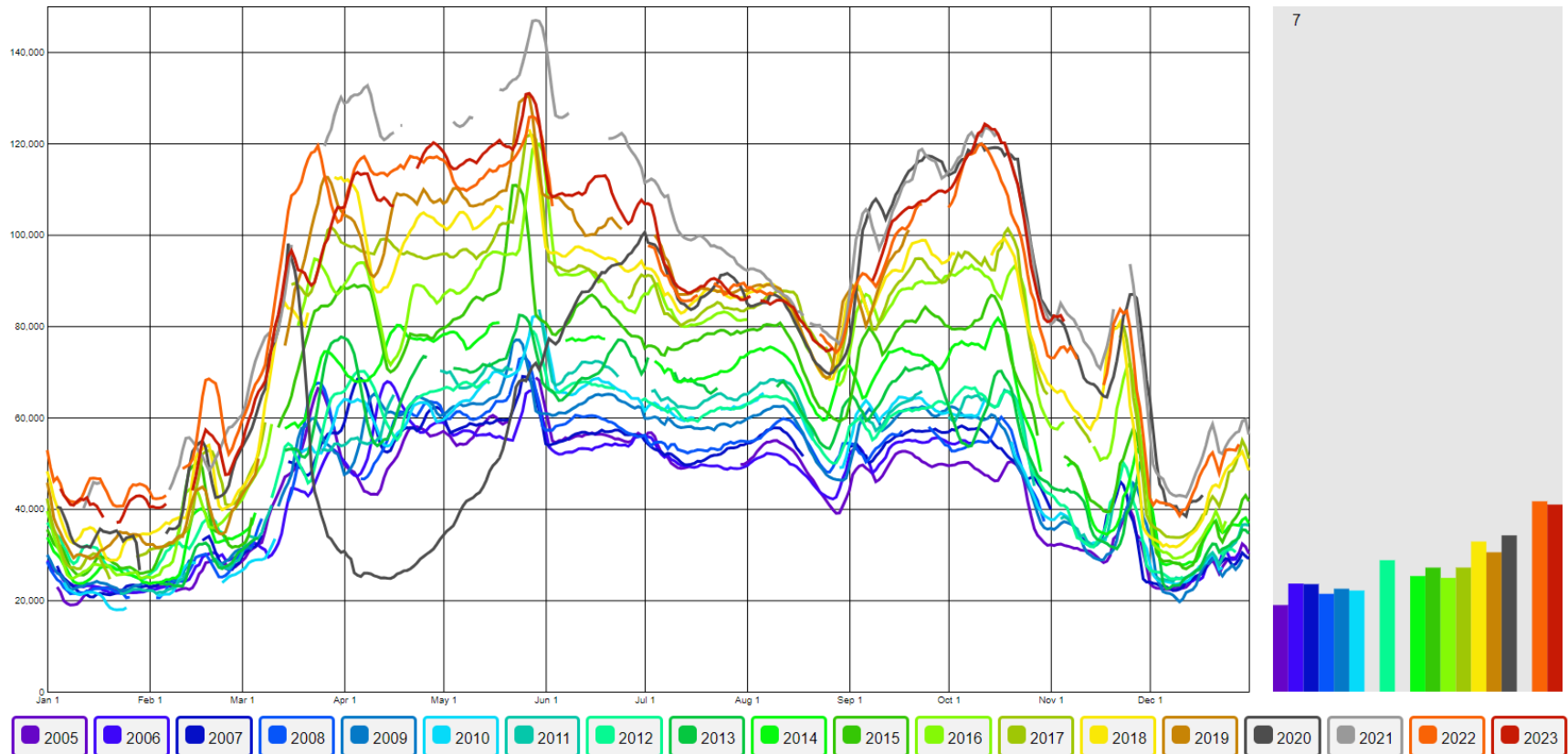
# Hwy 191 traffic counts 2005-2023

right hand bar chart compares multiple years for the date on which your cursor is hovering

[https://canyon23.net/191\\_traffic/](https://canyon23.net/191_traffic/) compiled with UDOT counter at MP 30 by Kevin Wlaker

Hwy 191 traffic, MP 130, 1 week rolling totals

This page does not work well on phones and tablets \*\* Try clicking and also alt/optn-clicking on buttons at bottom \*\* Try hovering cursor over the graph \*\* Try typing ':' and ':' \*\* Questions? Contact [Kevin Walker](#)







# Fee Program Implementation

E-commerce options = customer convenience

## Remote Off Grid Kiosks:

- Horsethief Campground 4/2022
- Big Bend Campground 10/2022
- Hittle Bottom Campground 4/2023
- Ledges Campground 9/2023



## Recreation.gov

- advanced reservations-6 months in advance for 40 group sites
- scan and pay application using QR code,  
...first come/ first serve electronic payment at 4 campgrounds  
...zero-day advanced reservations at Ken's Lake & Courthouse





# Projects completed in 2023

- 3 accessibility improvement projects
- 7 campground Improvements, two new reservable group sites, 2 new day use sites
- 7 trailhead and boat ramp improvements and expansion
- 6 steel kiosks and 10 new steel shade shelters
- 24 camp hosts, 16 volunteer groups
- 5 new bike maintenance and repair stands and purchased 2 e-bikes
- 3 partner river trips with MVMC, YGP and CFI
  
- Pumped 177,000 gallons of septage

Visitor Satisfaction Survey for Hell's Revenge Trail under agency contract with WSU

Continued partnership with Grand and San Juan Counties, UDOT, NPS and many others

NEPA documents including managing dispersed camping EAs for Utah Rims, and Two Rivers SRMAs, Labyrinth Gemini polygon



# Projects plus operations...

Dumpster contract for  
26 dumpsters ranging  
from 6-24 cubic yards in  
campgrounds and day  
use areas.

2019= \$93K

2023= \$130K annually  
or \$650K estimate for  
the new five-year  
contract.







U.S. Department of the Interior  
Bureau of Land Management

# Projects plus operations...

Toilet pumping contract for 170 vaults located at trailheads, campgrounds, day use areas.

2019 = \$80K.

2023 = \$175K annually or \$550K estimate for the new five-year contract. Does not include cleaning or enzymes.

Toilet paper - \$16K in 2023, 25,000 rolls

New toilets: Skyway, Colorado River Overlook, Cowboy, Fisher Towers, metal surround at Ledge E, and soon Navajo Rocks

Replacement toilets: Big Bend (6), Kokopelli (5), needed: Cisco, Dewey, Jaycee, Hall, Oak





# On the Horizon, upcoming projects

- Kokopelli Campground Upgrades: toilets, fire rings, picnic tables
- National Old Historic Spanish Trail: parking area improvements, education signs at Looking Glass, Las Tinajas, Half-Way Stage/ Courthouse, Sego Canyon, Cisco and Westwater, steel shade shelters at Courthouse 6 and 7
- Boat ramp improvements: Dewey, Lower Onion Creek and Ida Gulch
- Mud Springs trail system in partnership with San Juan & Grand counties with \$350K secured through UORG and RTP grants
- Sign updates and replacing old wooden kiosks with the new look steel kiosks
- Accessibility update, elevated tent pads, at Big Bend, Dewey and Horsethief



# Putting things into perspective

Truth in numbers...

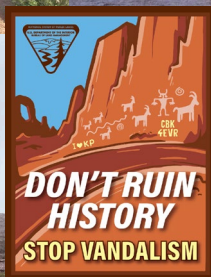
- Moab Field Office hosts more than 3 million visitors annually
- Carrying capacity of BLM campsites is almost 10,000+ people per night.
  - campgrounds are full most nights in spring and fall
- 834 individual campsites on BLM lands (plus countless opportunities for dispersed camping)
  - 63 individual campsites are offered by neighboring Arches and Canyonland National Parks combined (within the area of the Moab Field Office).
  - That means that in the area the BLM offers 13 campsites for every 1 offered by the Nation Parks Service
- Manages 500 SRPs, lots of commercial & organized group activities and 53+ events
- Relatively small staff of 29 including me and 2 LE
- Sand Flats Recreation Area sees 80,000 vehicles per year at the 9,000 acres





U.S. Department of the Interior  
Bureau of Land Management

# Improvements







# Monticello Recreation

- Monticello Field Office and Bears Ears National Monument
- Our team members
- Front-country and Backcountry Recreation Opportunities





U.S. Department of the Interior  
Bureau of Land Management

# Facilities – Kane Gulch Ranger Station

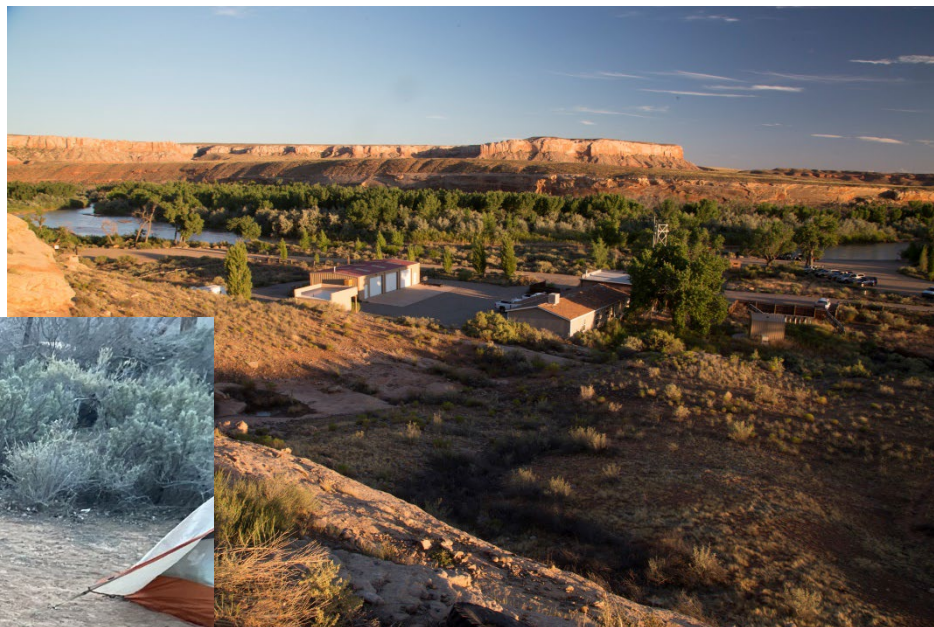






U.S. Department of the Interior  
Bureau of Land Management

# Sand Island Ranger Station/Campground







U.S. Department of the Interior  
Bureau of Land Management

# Facilities – Monticello Field Office





# Visitor Infrastructure – by the numbers

- Over 110 miles of non-motorized trails
- Over 250 miles of motorized trails
- 7 campgrounds (4 paid campgrounds)
- 20 Vault Toilets
- Kiosks, signs and working with partners to provide visitor information





# Visitor Use – by the numbers

- Special Recreation Permits
  - 16 Commercial River Permits
  - 21 Commercial Indian Creek Permits
  - 61 Commercial Cedar Mesa Permits
- Individual Special Recreation Permits
  - Cedar Mesa Day Use
  - Cedar Mesa Overnight
  - Moon House
  - San Juan River



# What are visitors doing here?

**Driving/Auto Touring**



**Day-hiking**

**Backpacking**

**Boating**

**ATVing/Jeeping**



**Visiting Historic Resources**

**Climbing**

**Other activities**







U.S. Department of the Interior  
Bureau of Land Management

# Projects and Initiatives







U.S. Department of the Interior  
Bureau of Land Management

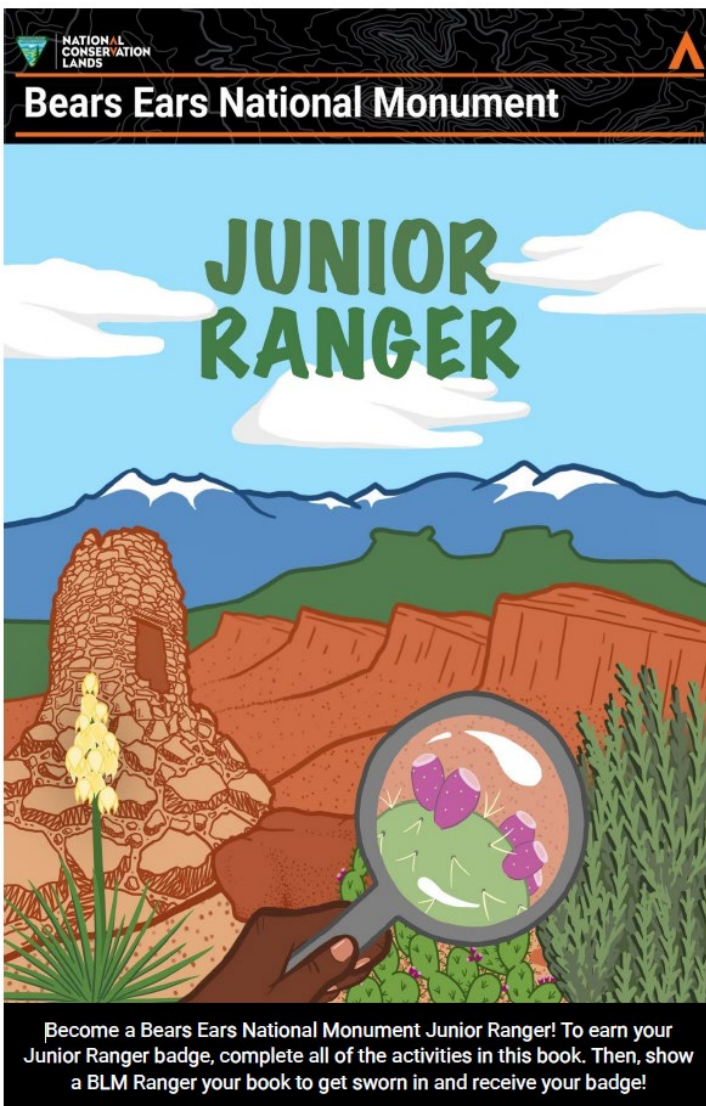
# October 14 – Annular Eclipse







# Jr. Ranger Book



Indian Creek is an amazing place to see rock layers. The study of rocks is known as **geology**, and scientists who study rocks are called **geologists**. Geologists have names for each layer of rock. Naming rocks helps scientists keep track of which layers are which and learn more about earth's history!

The names of each rock layer are shown below. Sometimes, geologists will come up with funny sentences to help them remember these layers! Can you come up with a sentence to help you remember these rock names?

Navajo Sandstone	Nobody	N	_____
Kayenta Formation	Knows	K	_____
Wingate Sandstone	What	W	_____
Chinle Formation	Can	C	_____
Moenkopi Formation	Make	M	_____
Organ Rock Shale	Onions	O	_____
Cedar Mesa Sandstone	Cry!	C	_____



U.S. Department of the Interior  
Bureau of Land Management

# Worked with Ancestral Lands Corps Crews





# CyArk Virtual Tours

## Bears Ears National Monument

*United States of America*

Designated a National Monument in 2016, Bears Ears National Monument is home to rich cultural heritage and is sacred to many Native American tribes who continue to utilize the landscape. Located in southeast Utah, visitors to Bears Ears can see the ...

[Read more](#)

[Project Resources](#)



**Video**

[Watch Video](#)



**Guided Tour**

[Go to Guided Tour](#)



**Panorama Tour**

[Start Panorama Tour](#)



**3D Explorer**

[Explore in 3D](#)





U.S. Department of the Interior  
Bureau of Land Management

# Natural Resources Field Day

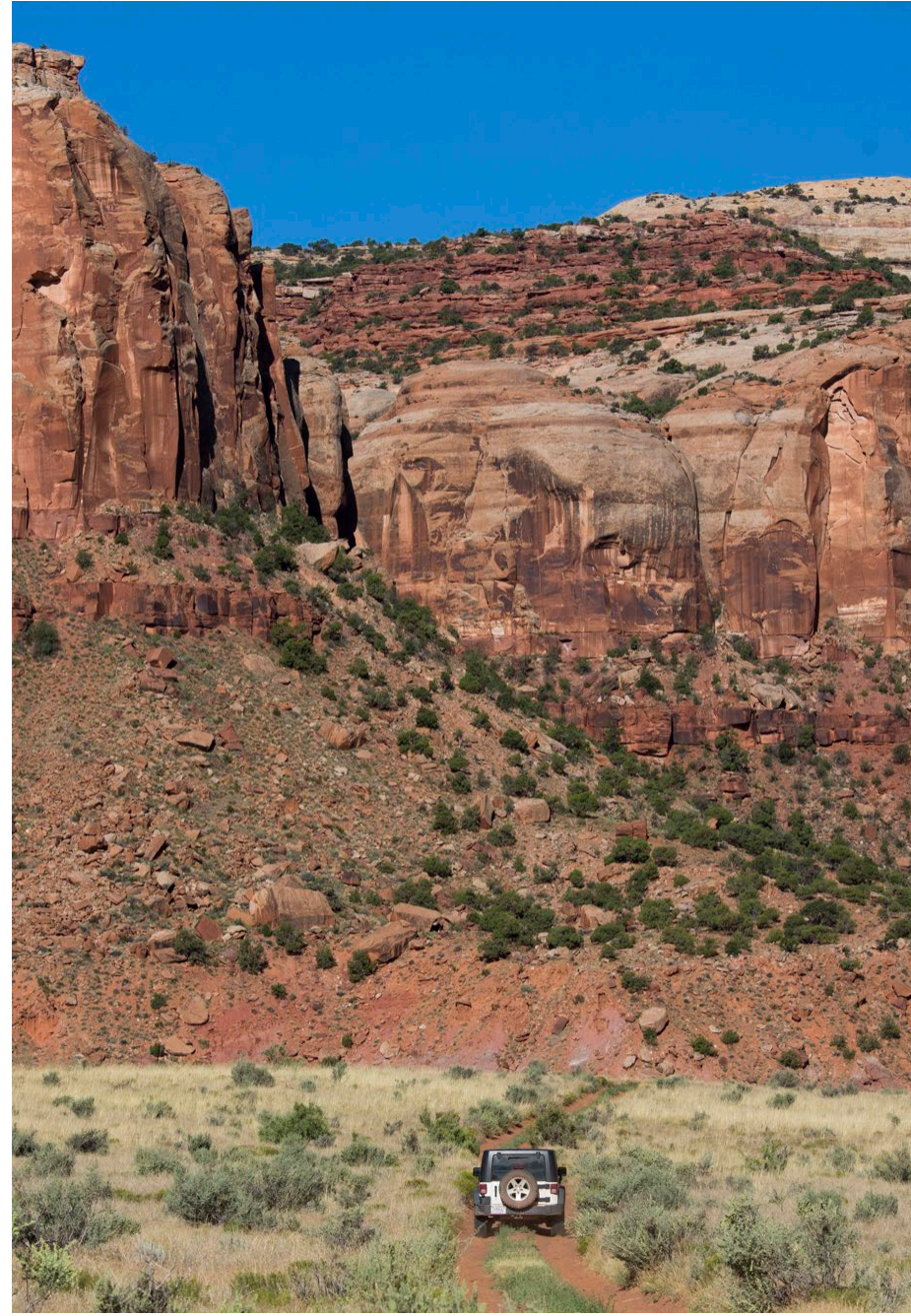






# Current planning

- An environmental impact statement/resource management plan is underway
- Travel management
- Additional plan implementation and supplementary rules





# What's next?

- Improved Signage
- Visitor Services Improvements
- Continued planning efforts and working with our partners on co-stewardship of the monument



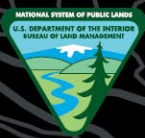


U.S. Department of the Interior  
Bureau of Land Management

# Thank you!







U.S. Department of the Interior  
Bureau of Land Management

U.S. Department of Agriculture  
United States Forest Service



# Bears Ears National Monument Overview

## Resource Advisory Council Meeting – November 2023







# Monticello Field Office / Bears Ears National Monument

## Monticello Field Office Acreage:

BLM: 1,785,127 acres

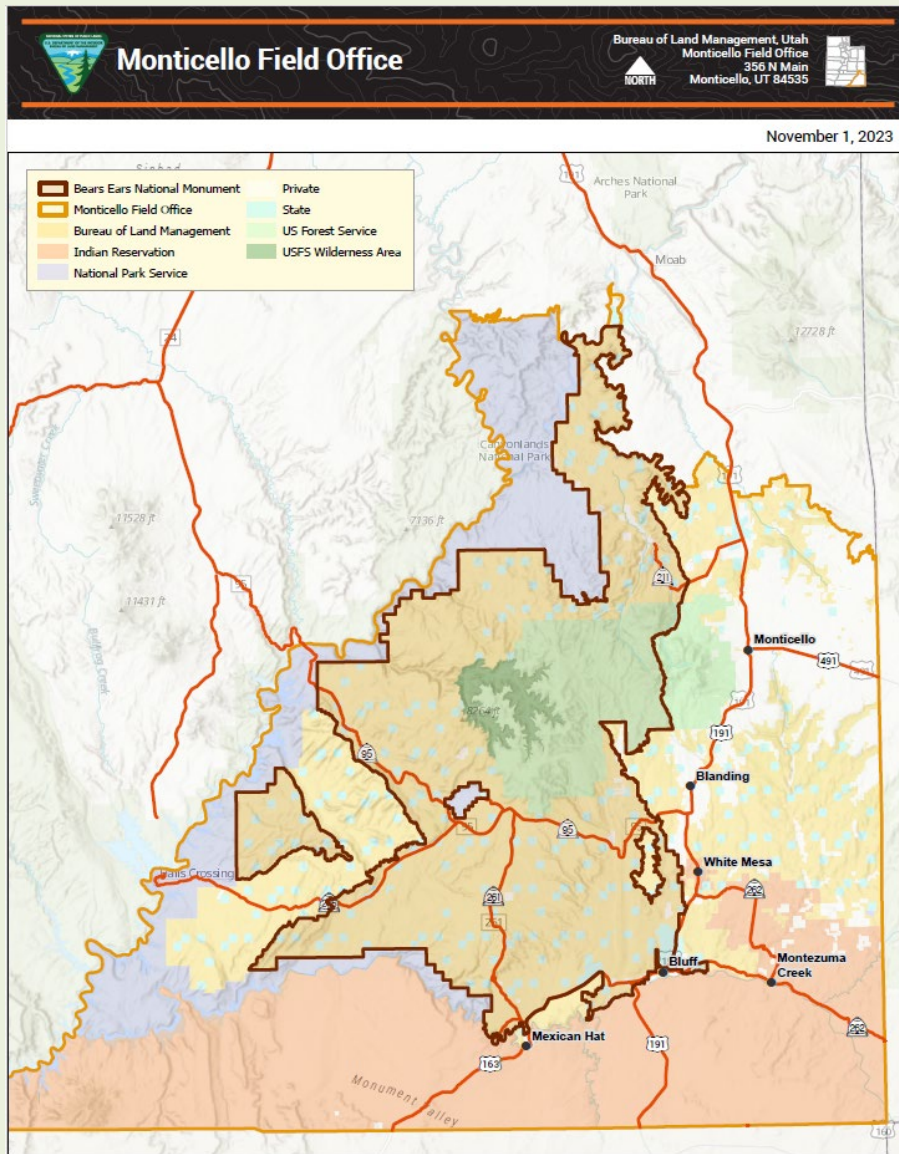
## Bears Ears National Monument Acreage:

### Federal Land Ownership (Acres)

- BLM: 1,075,000
- Forest Service: 289,000
- Total Federal Acres: 1,364,000

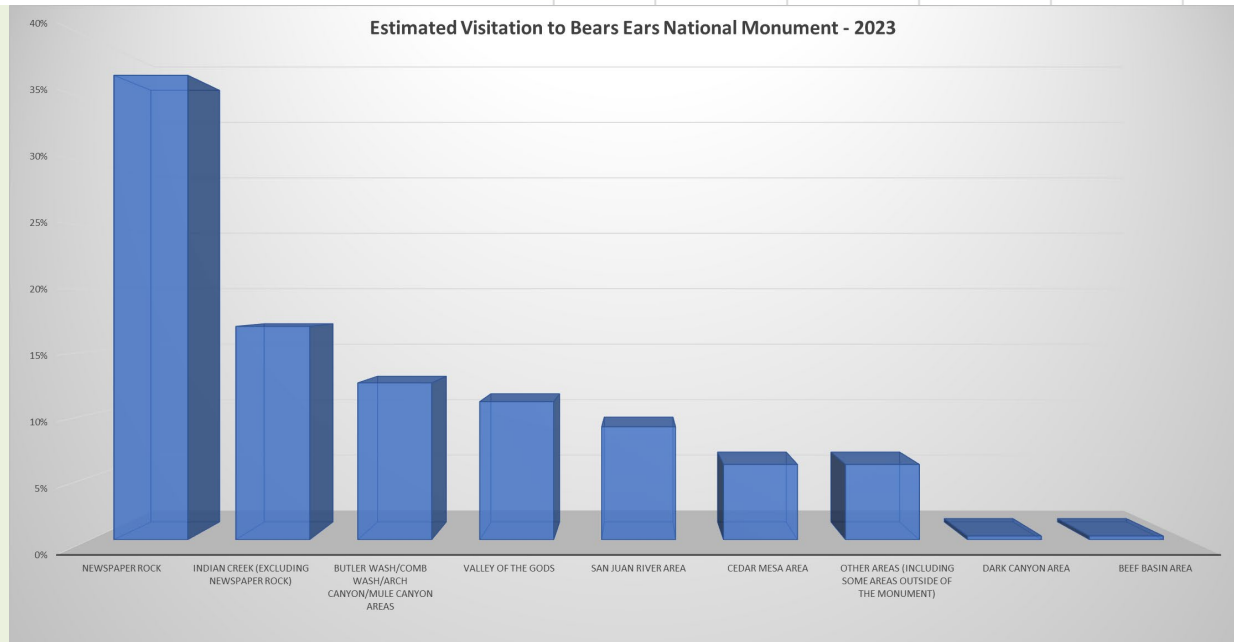
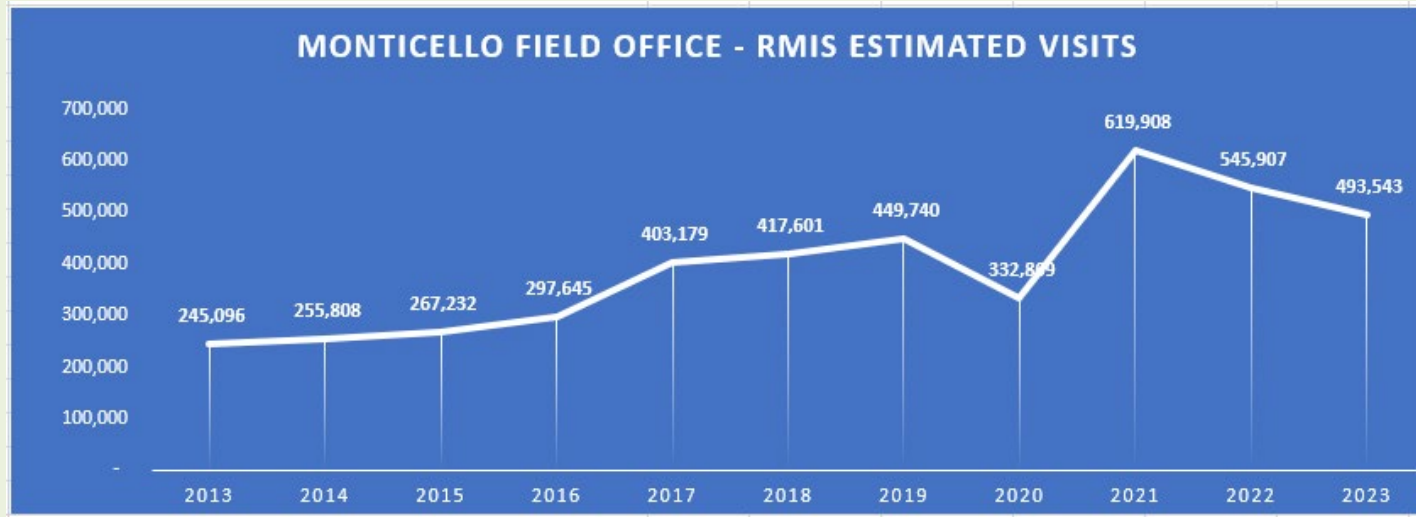
### Other Land Ownership (Acres)

- State: 112,000
- Private: 13,000





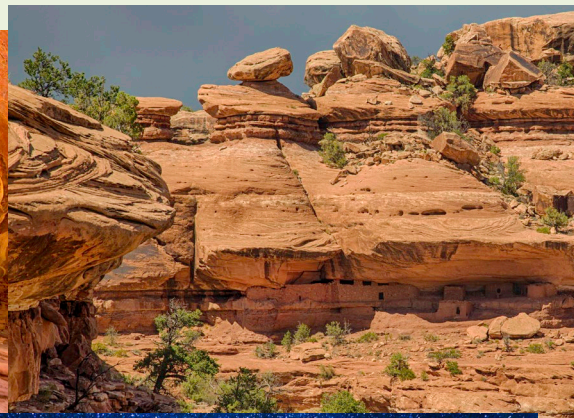
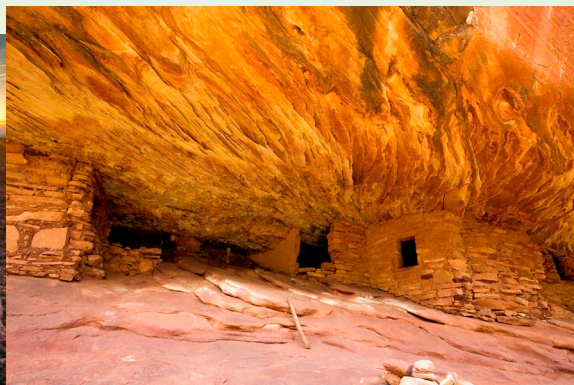
# Visitation to the Monument







# Bears Ears Landscape







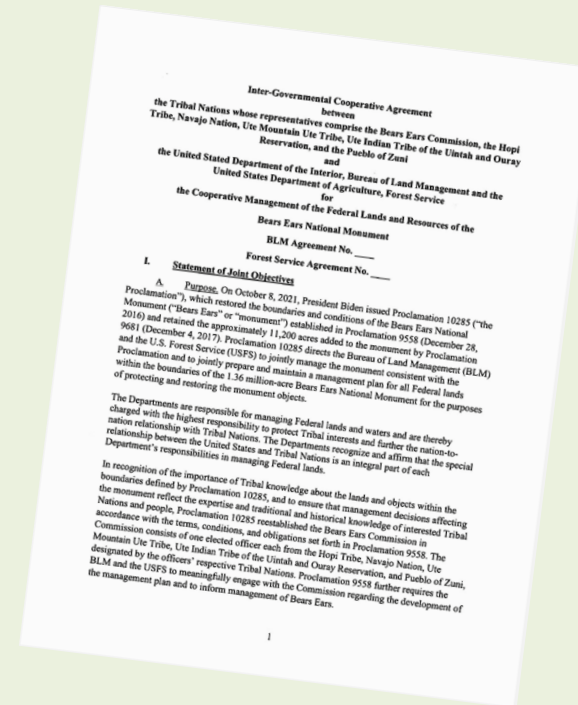
# Multiple Uses of Bears Ears





# Presidential Proclamation 10285 Highlights

- The agencies shall jointly prepare a new management plan
- Management decisions should reflect the expertise and traditional and historical knowledge of Tribal Nations by working with the Bears Ears Commission



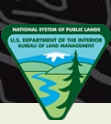


# Bears Ears Commission

- 1 elected official each from 5 Tribal Nations
  - Hopi Tribe, Pueblo of Zuni, Ute Tribe, Ute Mountain Ute Tribe, Navajo Nation
- Cooperative Management Agreement
  - “...facilitate communication and understanding between the Tribal Nations and the Federal land managers to better protect ceremonial and traditional activities within the monument, as well as to preserve and integrate traditional knowledge of the region and apply that knowledge to inform Federal land management decisions.”
    - Examples:
      - Coordinate on development of RMP
      - Develop opportunities to engage tribal youth
      - Annual, quarterly, and/or regular meetings







# New Resource Management Plan

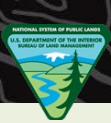
- Existing Management Plans
  - 2020 Bears Ears National Monument Management Plan
  - 2008 Monticello Resource Management Plan
  - 1986 Manti-La Sal National Forest Land Management Plan
  - 2008 Moab Resource Management Plan
- Purpose of New Plan
  - Protecting and restoring the objects identified in Presidential Proclamations 9558 and 10285
- Collaboratively develop a range of management alternatives
  - Bears Ears Commission
  - Tribal Nations
  - Cooperating Agencies (e.g., State of Utah, San Juan County, NPS, etc.)



# Plan Timeline

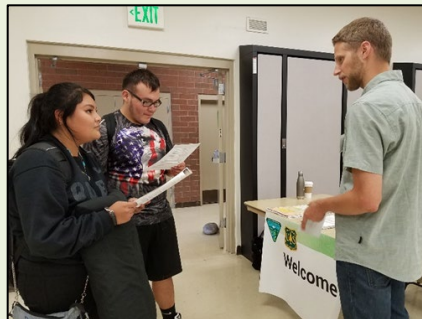






# New Resource Management Plan

- Next Steps
  - Release Draft RMP/EIS
  - 90-day public comment period
  - Public meetings
    - 2 virtual meetings
    - 5 in-person meetings
      - Salt Lake City, Blanding, Monument Valley, Flagstaff, Albuquerque
  - Comment reconciliation
  - Develop proposed RMP





# Questions?







U.S. Department of the Interior  
Bureau of Land Management

# Public Comment Process



\_\_\_\_\_

It will be recalled that the distance [redacted] of Hawaii from Japan makes it obvious that the attack [redacted] deliberately planned many days ago. During the intervening time the Japanese Government has deliberately sought to deceive the United States by false statements and expressions of hope for continued peace.





# Public Comment

Substantive public comments are important because they could provide information that was not contemplated or was overlooked.



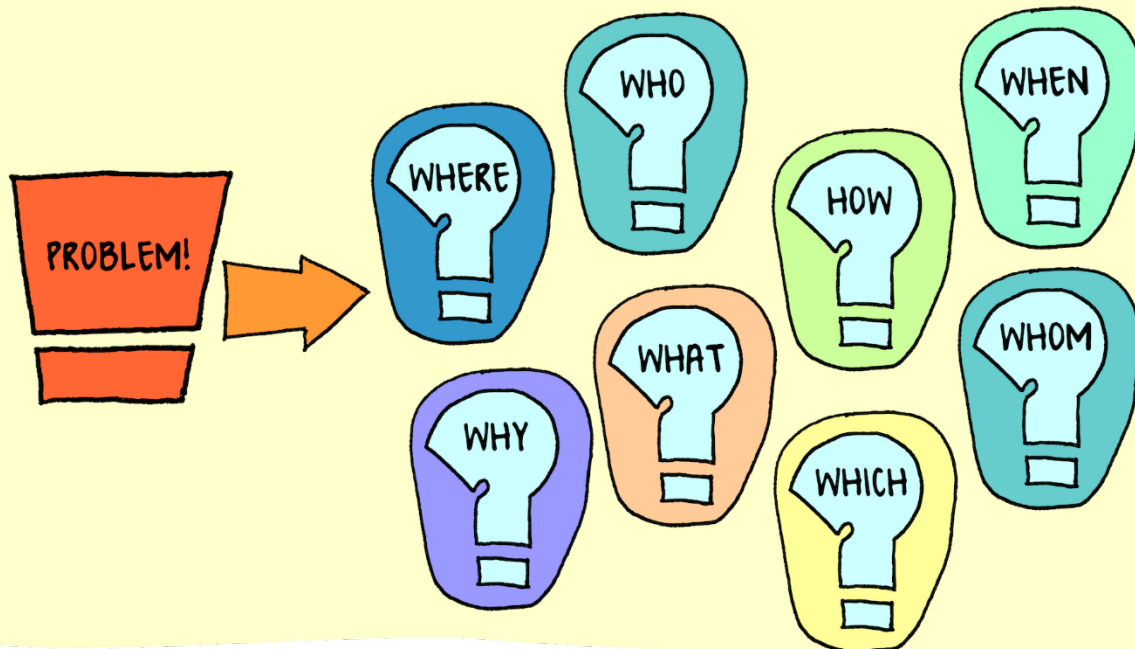
sub·stan·tive

- having a firm basis in reality and therefore important, meaningful, or considerable.



# Problem -> Solution

1. Identify the problem
2. Explain why it's a problem
3. Offer a solution







# ePlanning

ePlanning is a web-based tool that allows the public to review NEPA information for proposed public land actions.

NEPA  
ePlanning





# Public Meetings







U.S. Department of the Interior  
Bureau of Land Management

# Discussion

