



U.S. Department of the Interior
Bureau of Land Management

Welcome to today's town hall

Restoring public lands across Montana



blm.gov/montana-dakotas-restoration



Zoom Instructions

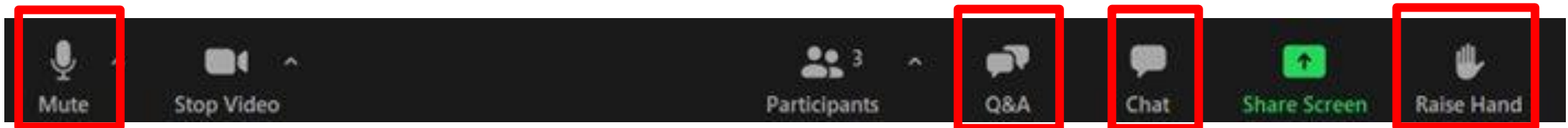
If you need technical support during the meeting, please send a message using the Zoom chat, or you can email Sam Levy, Technical Support, at slevy@kearnswest.com for assistance.

To get in the queue to ask a question, please click the Raise Hand button in the bottom taskbar. If you are joining by phone, please dial *9 to Raise Hand to enter the queue.

When it is your turn to ask a question, the moderator will read your name aloud. At this point, you will be given permission to unmute yourself and ask your question.

For phone participants, once called on by the moderator, dial *6 to unmute and begin speaking.

You can also ask questions using the Q&A pod in the bottom taskbar. Questions will be collected by the BLM team and may be read aloud during the meeting.





Bringing transparency to government

- Share information about national investments in public lands
- Overview of National Restoration Landscapes
- Invite you to work with us
- Celebrate partners
- Welcome questions and discussion



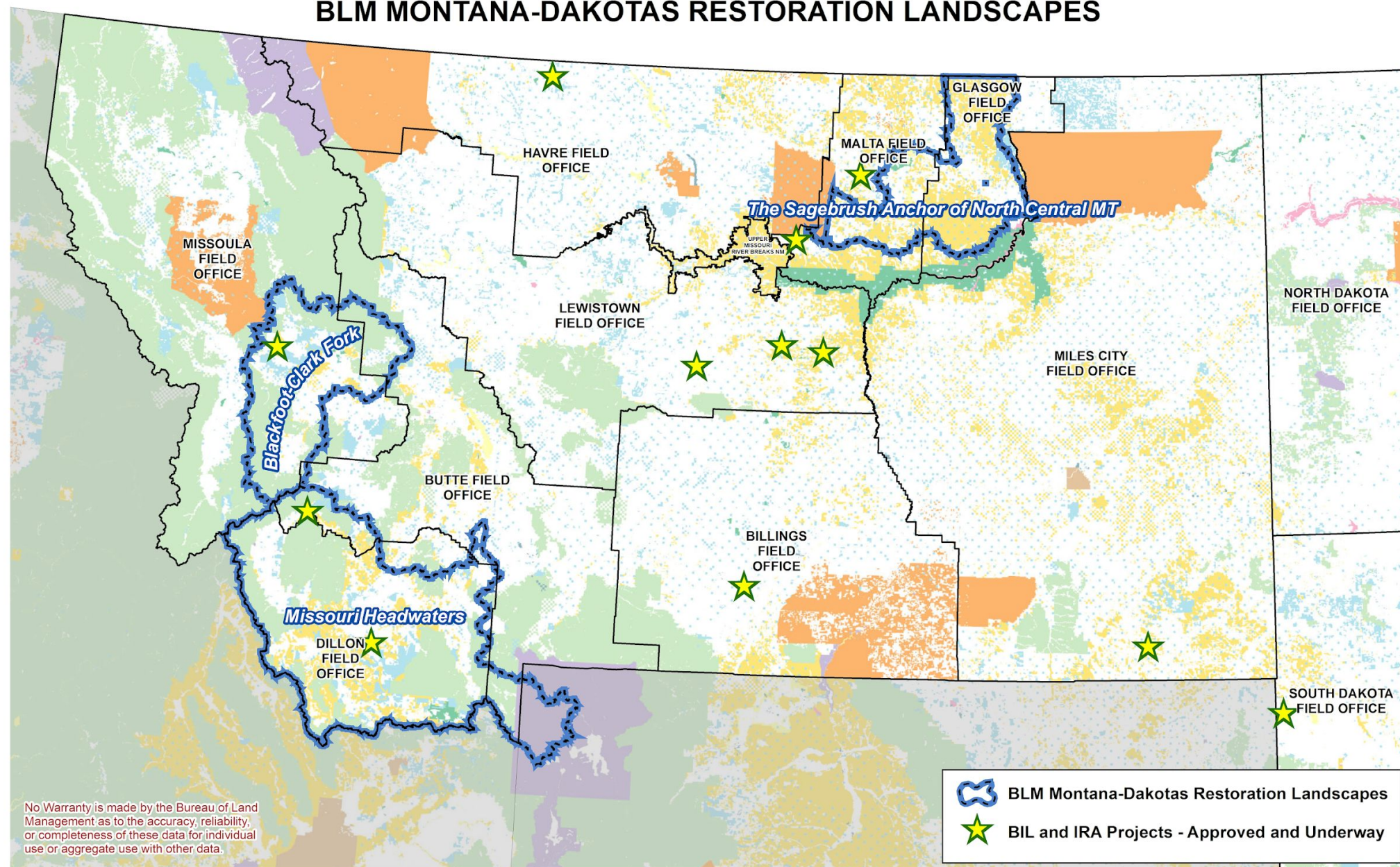


Once-in-a-generation investments

- Bipartisan Infrastructure Law Investments
 - National \$225 million Fuels
 - National \$90 million Ecosystem Restoration
 - MT/DAKs \$5.6 million Fuels
 - MT/DAKs \$3.5 million Ecosystem Restoration
- Inflation Reduction Act Investments
 - \$290 million total
 - \$161 million 21 National Restoration Landscapes
 - **\$27 million MT/DAKs National Restoration Landscapes**



BLM MONTANA-DAKOTAS RESTORATION LANDSCAPES





Why did we select these areas?

- Long history of partnerships
- Transformational change
- Restoration needs / opportunities





Outcomes of restoration investments

- Resilient landscapes
- Cross-boundary restoration
- Infuse money into communities
- Support local jobs and economies
- Leverage partner investments



Partnerships

- Trout Unlimited
- Beaverhead Conservation District
- Big Hole Watershed Committee
- Ruby Valley Conservation District
- Centennial Valley Association
- Madison River Foundation
- Rocky Mountain Elk Foundation
- Mule Deer Foundation
- Ducks Unlimited
- Confederated Salish and Kootenai Tribes
- Blackfeet Nation
- Shoshone-Bannock Tribes
- The Nature Conservancy
- Southwest Montana Sagebrush Partnership
- Natural Resource Conservation Service
- National Fish and Wildlife Foundation
- Heart of the Rockies Initiative
- High Divide Collaborative
- Montana Fish Wildlife and Parks
- Beaverhead Watershed Committee
- United States Department of Agriculture Forest Service
- United States Fish and Wildlife Service



U.S. Department of the Interior
Bureau of Land Management

Missouri Headwaters Restoration Landscape

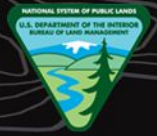




Overview

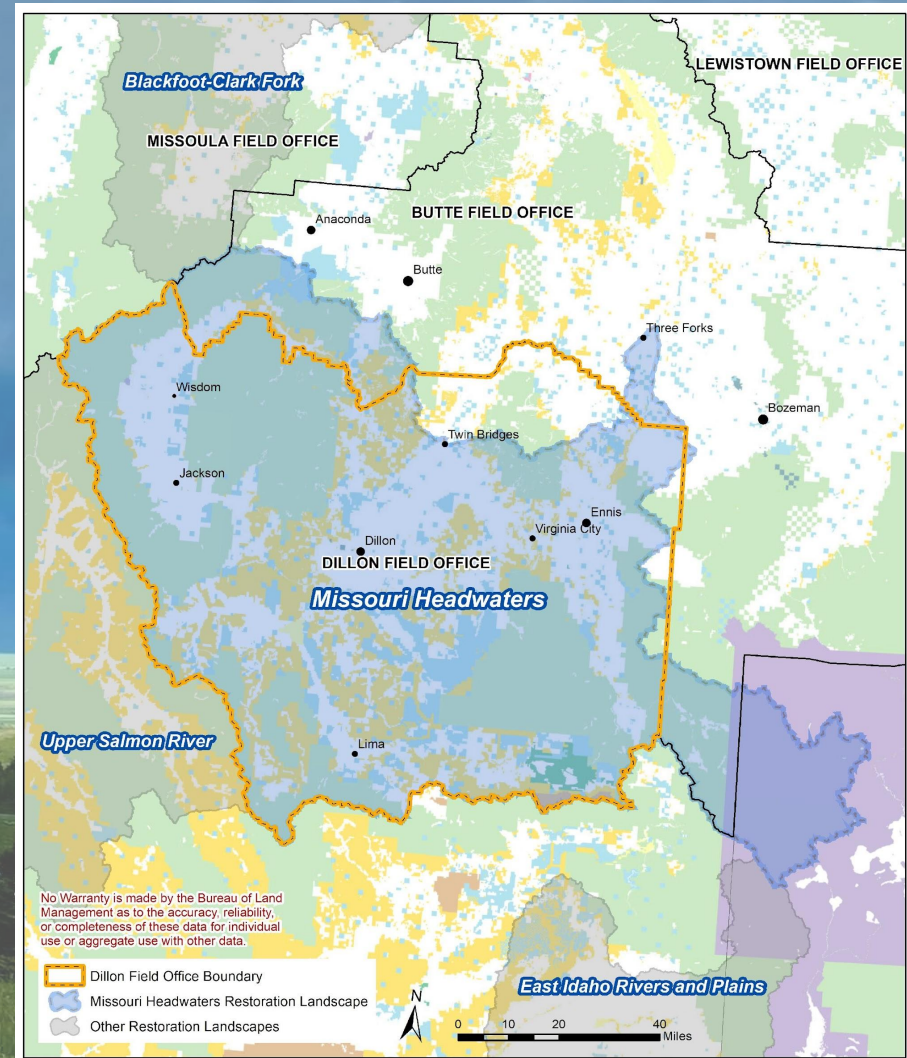
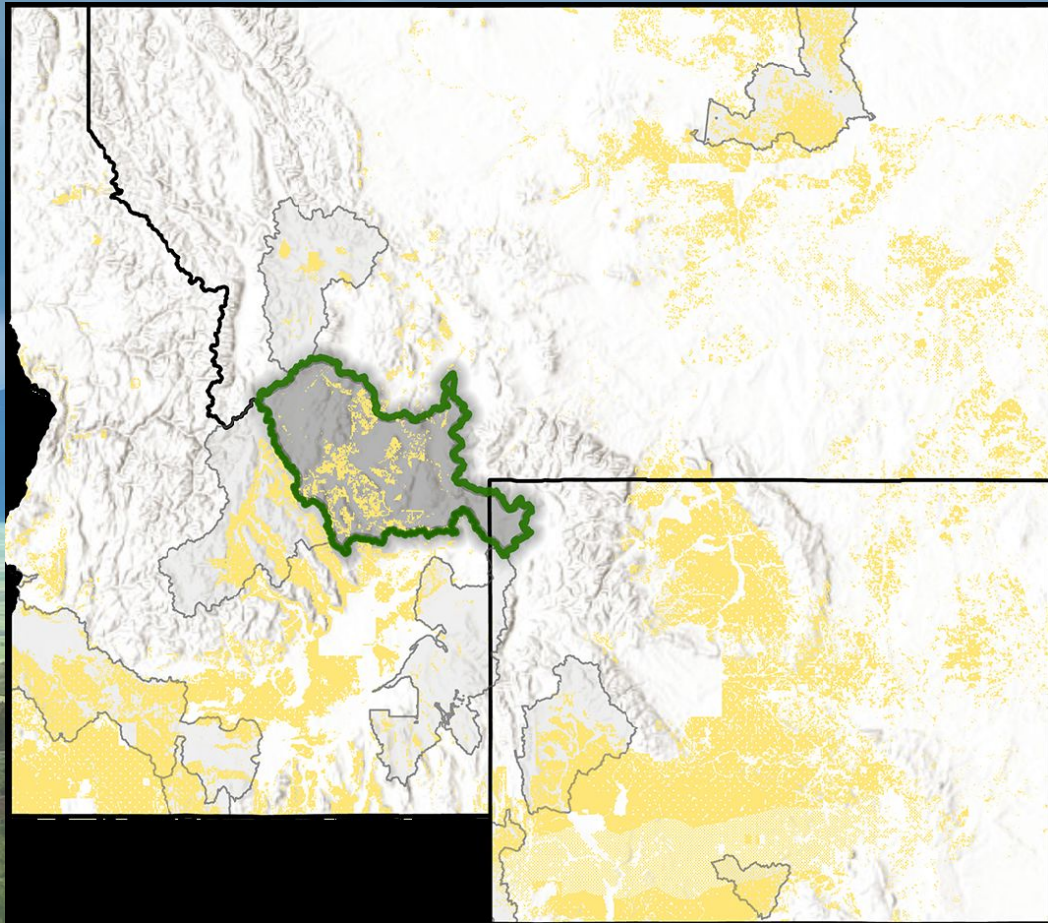
- Bridge of the Greater Yellowstone and the Crown of the Continent that we refer to as the High Divide.
- Characterized by its high elevation mountain ranges, expansive sagebrush steppe, and large productive valleys.
- Home to multi-generational family ranches that support vital economies, anchored by sagebrush grasslands.
- 6.48 million total acres in the Missouri Headwaters Restoration Landscape
- 937,000 BLM –managed acres.





U.S. Department of the Interior
Bureau of Land Management

Missouri Headwaters Restoration Landscape Southwest Montana





U.S. Department of the Interior
Bureau of Land Management

Investment

- Inflation Reduction Act investment of \$9.98 million in the Missouri Headwaters Restoration Landscape.
- Complementing a \$400,000 Bipartisan Infrastructure Law investment.



U.S. Department of the Interior
Bureau of Land Management

Impact on communities

Focus

- Direct connections between people and conservation
- Leverage funding in existing partnerships, with focus on local economies and communities

IRA Investment Impacts

- Youth conservation employment
- Employment through private contractors.
- Roughly \$6M dedicated to agreements and contracts.



Impact on the landscape

“Restoration Through Collaboration”

Through a comprehensive partnership strategy, the Dillon Field Office intends to leverage IRA investments to have a broad impact across the landscape regardless of land ownership.

- **Restoring, enhancing and maintaining sagebrush habitat, with a focus on habitats currently dominated by Rocky Mountain Juniper and Douglas-fir.**





Impacts on the landscape

- Restore, connect, and/or maintain riparian wetland habitat.
- Addressing point sedimentation issues caused by roads and trails.
- Restore migration routes and facilitate safe passage for wildlife
- Improve overall forest and woodland health
- Expand current and create new partnerships to ensure ecological function at a landscape level with a strong emphasis on youth involvement.





Projects

Riparian and wet meadow restoration by promoting and sustaining natural processes.

- Rock, post, and log structures and beaver-dam like structures

Conifer encroachment in sagebrush steppe habitat.

- Mechanical, prescribed fire, and reseeding treatments
- Invasive species inventory and treatments

Protecting and rehabilitating whitebark pine habitat.

- Cone collection and pheromone application
- Inventory and monitoring

Restoring wildlife migration routes.

- Remove woven wire and other hazard fence material
- Rebuild fences to wildlife friendly specifications

Reducing point sedimentation and habitat fragmentation.

- Route inventory and evaluation
- Road and trail maintenance to protect sensitive riparian habitat

Youth Employment Program (YEP) crew maintaining conifer encroachment treatment unit
Photo Credit: Nolan Salix (YEP)

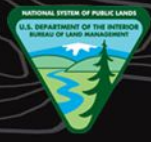




U.S. Department of the Interior
Bureau of Land Management

Hi-Line Sagebrush Anchor Restoration Landscape





Overview

- 3-million acres
1.5 million BLM acres
- Malta & Glasgow Field Offices
(Valley & Phillips counties)
- Some of the largest intact
grasslands remaining in North
America
 - Grassland birds
 - Sage-grouse
 - Pronghorn, deer and elk

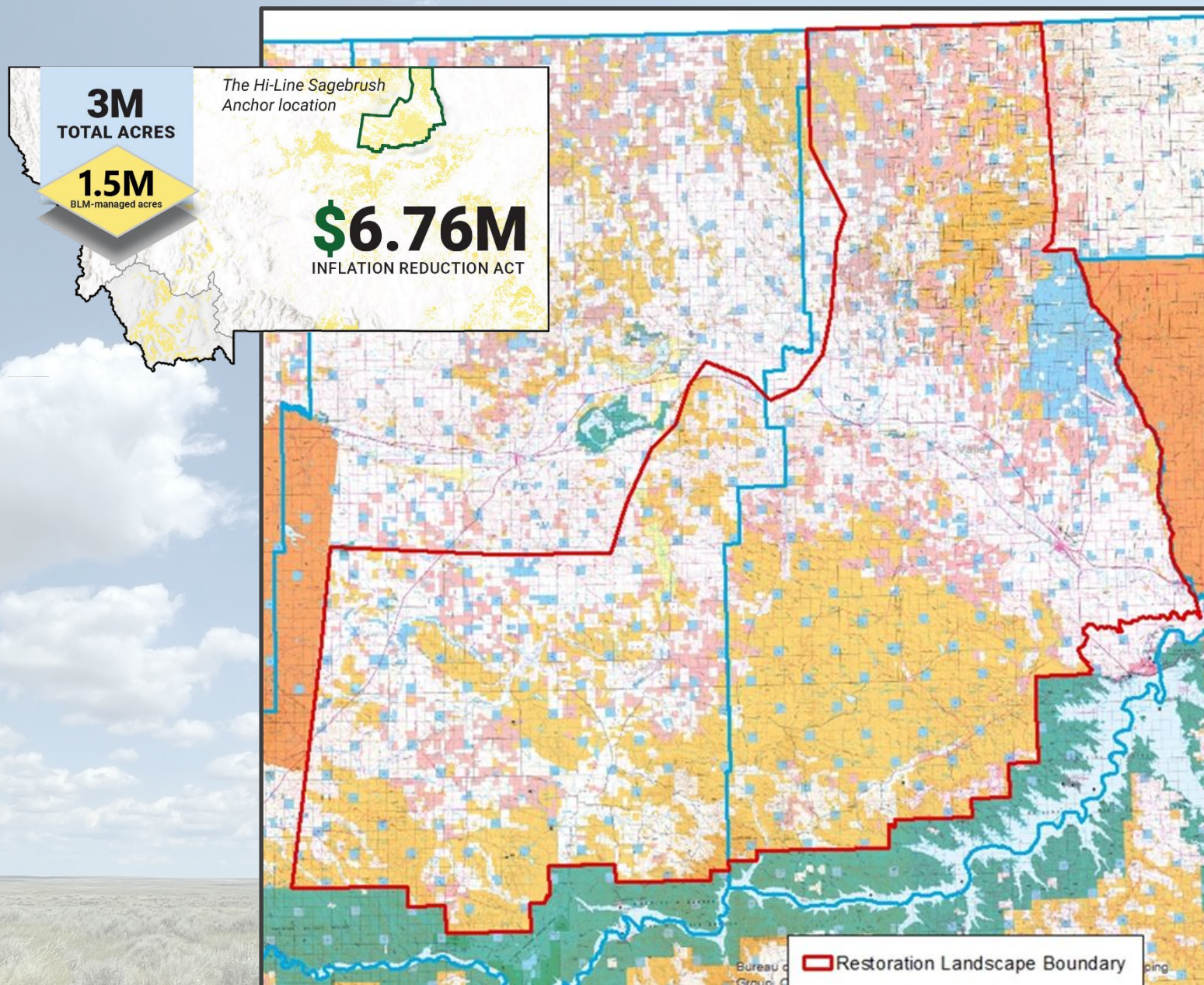




U.S. Department of the Interior
Bureau of Land Management

Hi-Line Sagebrush Anchor

North Central Montana





U.S. Department of the Interior
Bureau of Land Management

Investment

- **\$6.76-million** invested through Inflation Reduction Act
- **5:1 partner match**





Landscape Benefits

- More riparian and mesic habitat
- Increased native plant species
- Improved wildlife movement
- Better sage-grouse habitat
- Improved grazing management





Benefits to communities

- Increased forage production for wildlife and livestock
- Enhanced recreation opportunities, such as hunting and bird watching
- Project-related jobs
- Drought resilience
- Invasive species reduction





Projects



Restoration Features



Create Climate Resilience



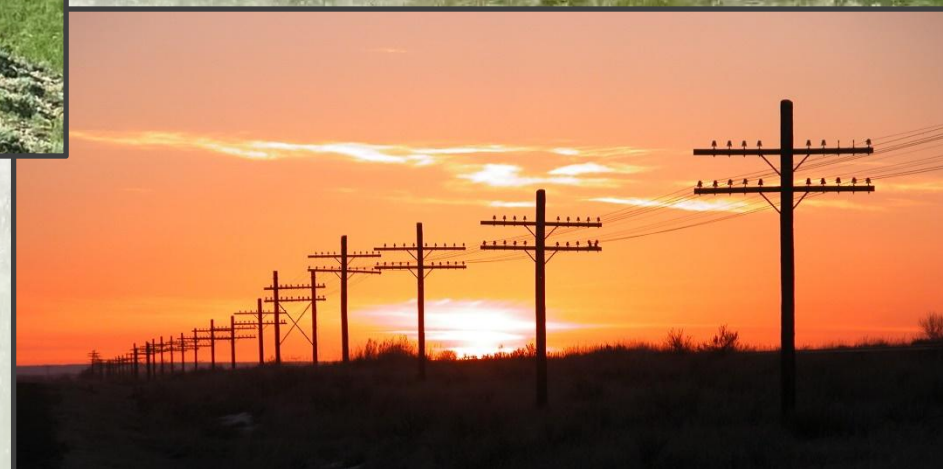
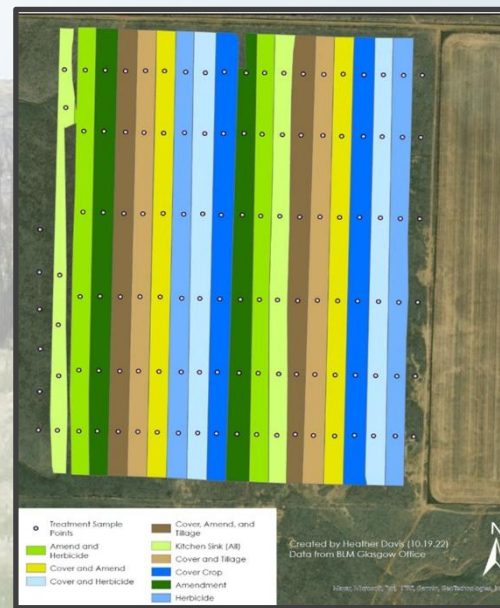
Protect native plants & remove invasive species



Restore Riparian/Wetland



Conduct Fire/Fuels Treatments





Projects



Restoration Features



Create Climate Resilience



Protect native plants & remove invasive species



Restore Riparian/Wetland



Conduct Fire/Fuels Treatments

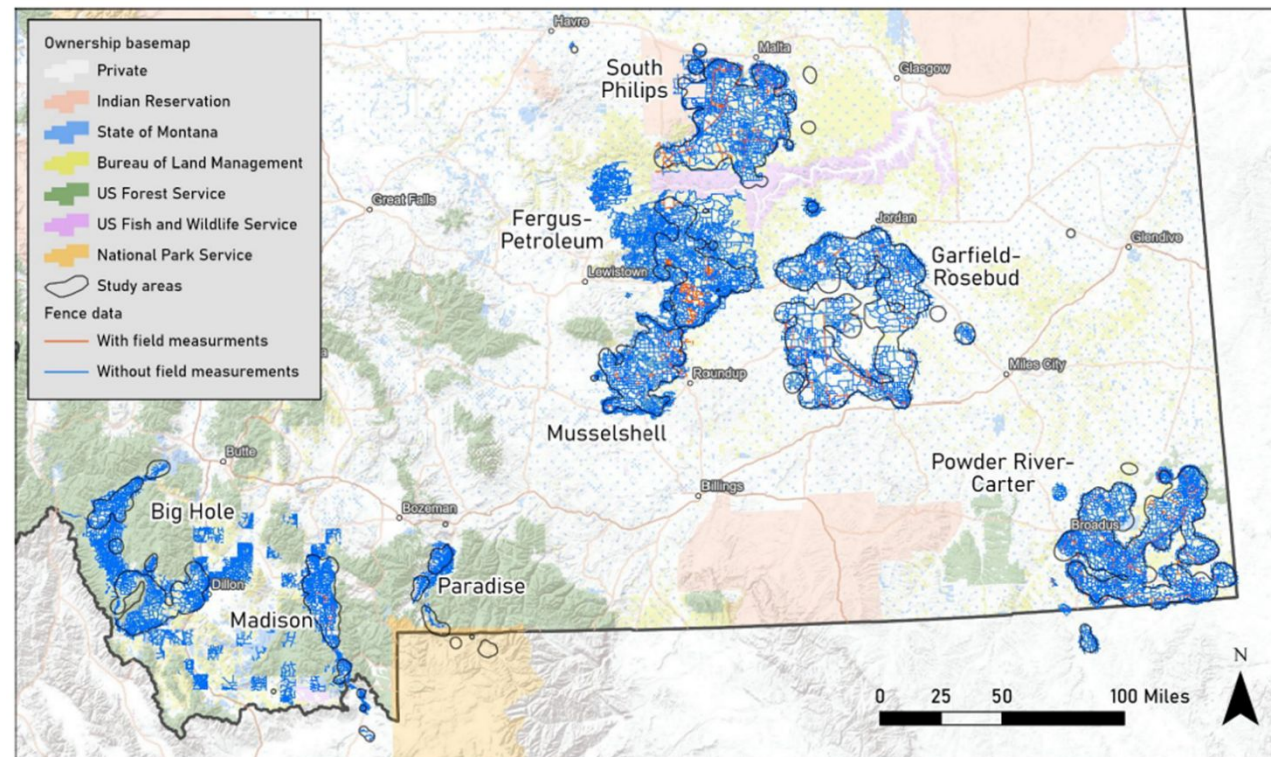
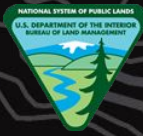


Figure 54. Fence spatial data collected as part of the Montana Pronghorn Movement and Population Ecology Project. Red and blue lines represent mapped fences with and without fence characteristics measured in the field, respectively. Black-bordered polygons represent the annual range of collared pronghorn in each study area.



U.S. Department of the Interior
Bureau of Land Management

Blackfoot – Clark Fork Restoration Landscape

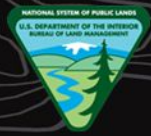




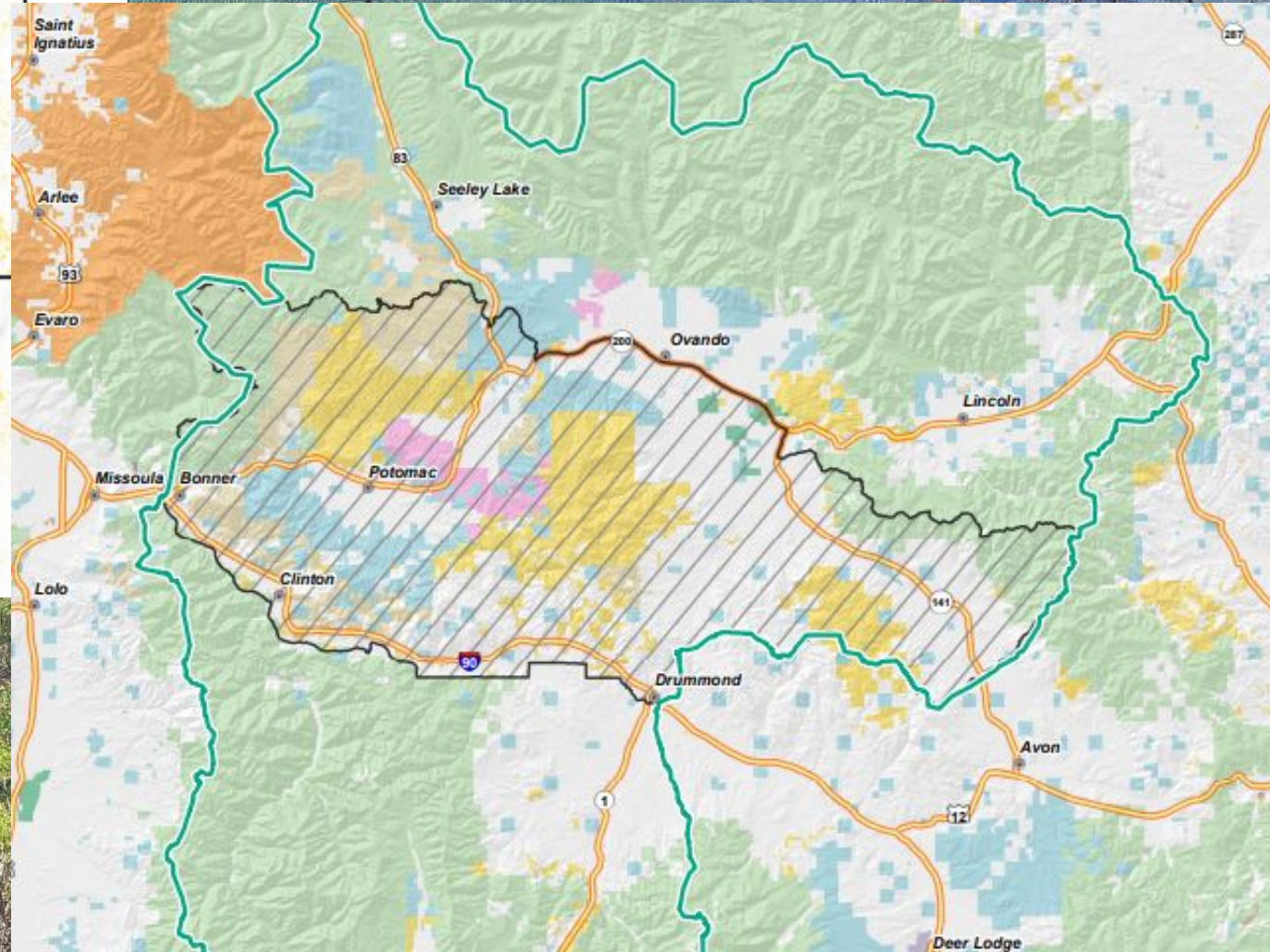
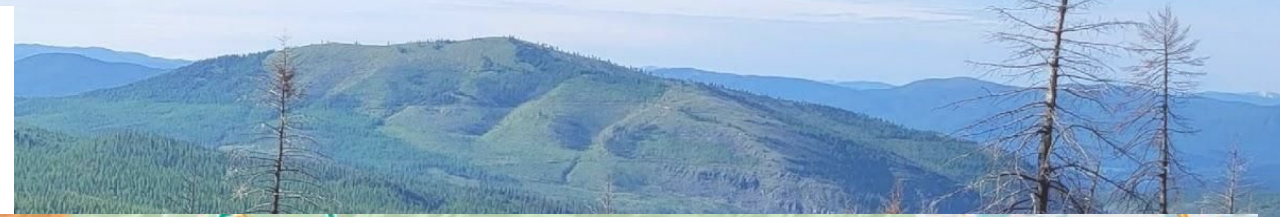
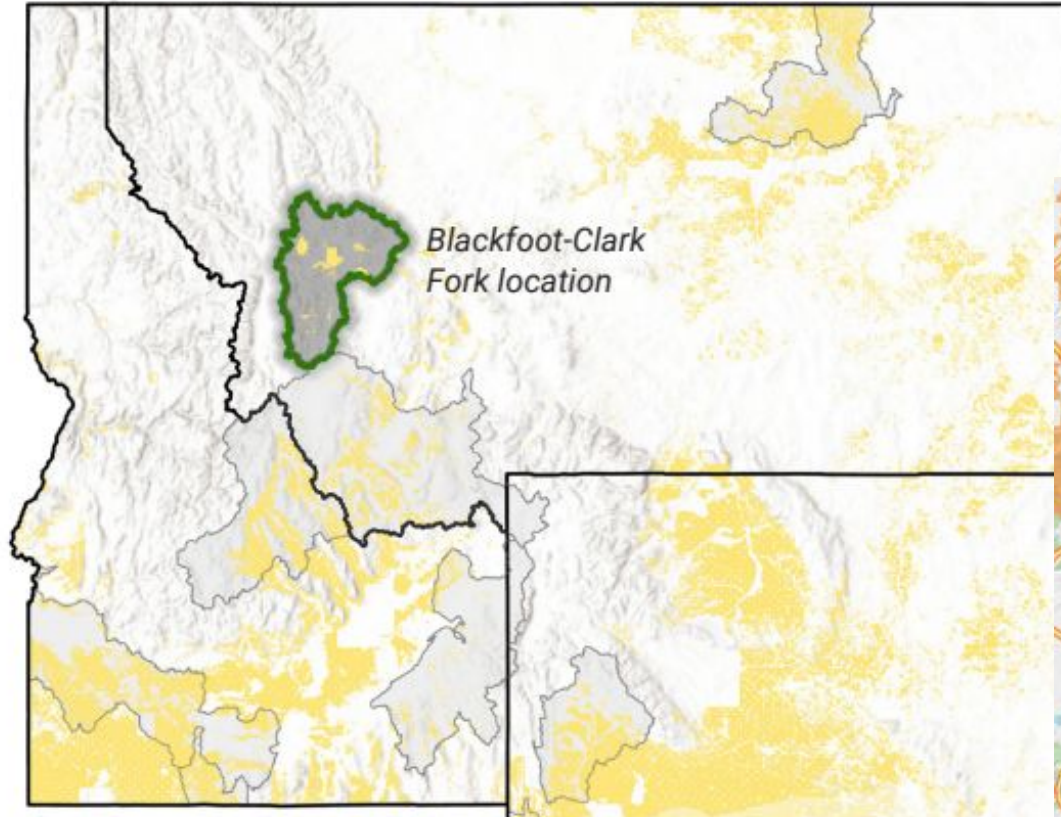
Overview

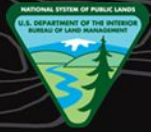
- Much of this landscape was previously in private ownership and has a legacy of gold mining, intensive logging and roadbuilding, as well as several catastrophic wildfires.
- Enormous opportunity to restore ecosystem function for a variety of benefits.
- The Blackfoot – Clark Fork Restoration Landscape encompasses 2.6 million acres in the Blackfoot River and Clark Fork River watersheds.





U.S. Department of the Interior
Bureau of Land Management





U.S. Department of the Interior
Bureau of Land Management

Investment

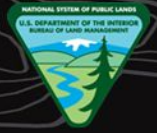
- \$9.54m of Inflation Reduction Act Restoration Landscape funding
- Additional \$2m in Bipartisan Infrastructure Law funding
- Leveraging additional ~\$7m in other funding sources
- Partner-driven restoration



U.S. Department of the Interior
Bureau of Land Management

Benefits to Communities

- Focus on restoring ecosystem function to support this working landscape and the role it plays in livelihoods and community resiliency
- Roughly \$7.4M of Inflation Reduction Act funds going to local partners and contracts for this work.



U.S. Department of the Interior
Bureau of Land Management

Landscape Benefits

- Restore Forest Health and Resiliency
- Restore Riparian Health
- Improve Recreation Resiliency and Access
- Manage for Culturally Important Resources





Projects

- Restore ecological function at a landscape scale through vegetation management, prescribed fire, noxious weed treatments, and enhancement of native plant populations.
- Improve road conditions to reduce sediment delivery, remove redundant roads from the landscape, restore floodplain connectivity, and implement in-stream restoration projects using tools like Low Tech Process Based Restoration, large wood jams, and mine reclamation projects
- Conduct comprehensive travel and transportation planning for the lower Blackfoot. River watershed on acquired public lands to improve access and road conditions while restoring habitat for fish and wildlife species including Bull Trout, Grizzly Bear, Canada Lynx, and big game.
- Work with tribes to collaboratively steward this landscape with an emphasis on forest health and wildlife habitat, enhancing native plant communities, and restoring important fisheries.





U.S. Department of the Interior
Bureau of Land Management

Please join us in the future

- Future engagements in restoration landscapes
- Winter townhall to discuss Bipartisan Infrastructure investments and priority areas for investment outside of National Restoration Landscapes





U.S. Department of the Interior
Bureau of Land Management

We will now take questions. Thank you for joining us!

Stay up to date at blm.gov/montana-dakotas-restoration

For additional questions, please email
BLM_MT_DAKS_RestorationLandscapes@blm.gov