



U.S. Department of the Interior
Bureau of Land Management

Utah Resource Advisory Council

Meeting Minutes

August 15-16, 2023

Green River District Office, Utah

Meeting Attendees:

- **Utah Resource Advisory Council members:** Greg Sheehan (DFO) Tyler Thompson (Chair) Clif Koonts (Vice-Chair), Sim Weston, Pat Hearty, Joan Hayes, Bill Cox, Rick Draney (Virtual) Neal Clark (Virtual), Dean Draper (Virtual)
- **BLM employees:** Gus Warr, Lance Porter, Roger Bankert, Kevin Oliver, Angela Hawkins, Jeremy Dyer, Amanda Deppe
- **Members of the public:** Clay Crozier, Larry Ellertson, Joel Brown, Mike Hyde

Welcome and Introductions

Designated Federal Officer, Utah State Director Greg Sheehan

- Welcome and introductions to all attendees.
- The public was asked to hold all questions and comments until 1:00 p.m. when the Public Comment session begins.
- The next RAC meeting will be held in Blanding, Utah, on Nov. 14 & 15, 2023.
- There will be a field trip on August 16, leaving at 8:00 a.m., traveling to Jarvie Ranch. It is recommended that you have truck tires due to road conditions and remember to bring a lunch.
- These meetings are important and give the public a chance to interact and have a voice with those making decisions about public lands.

BLM Utah Projects

Designated Federal Officer, Utah State Director Greg Sheehan

- BLM Utah has several projects that are underway.
 - Grand Staircase-Escalante National Monument
 - The draft RMP has been released and is currently in the 90-day public comment period.
 - There may be a range of uses and restrictions proposed, but the intent is to have a blend of alternatives based on the public comments.
 - Bears Ears National Monument
 - There should be a draft RMP coming in November 2023.
 - Public Lands Rule
 - Currently in the evaluation period.
 - Expect updates in November, if applicable.
 - Dingell Land Exchange
 - This became law in March of 2019.
 - Approximately 96,000 BLM acres and 115,000 SITLA acres.
 - The exchange should be completed in the 1st quarter of 2024.
 - There were challenges in receiving appraisals for the land exchange.
 - 1 year was budgeted, however only one bid was received, and it was for \$5 million dollars.
 - This was re-bid, with the land broken up into parcels. Appraisals are currently under review.
 - Travel Management
 - Labyrinth – Should be finalized in the next month.
 - Warner Valley Land Exchange
 - No updates at this time.
 - Oil & Gas Lease Sales
 - Sales in September 2023 & December 2023 (December date will be announced in November).
 - Transmission Lines
 - Cross Tie Transmission Line
 - This is in draft.
 - TransWest Express
 - This was approved.
 - Groundbreaking was in Rawlins, Wyoming, in July 2023.
 - Gateway South
 - This was approved and moved quickly.
 - Target completion was approximately 2 years, and we are at the end of year one.

- National BLM Initiatives
 - Greater Sage Grouse Planning Efforts
 - There is no draft yet.
 - This will be a National initiative with individual State decisions.
 - Utah will need to examine use areas of sage grouse.
 - Mapping of the sage grouse may have changed in the last six years to change the use areas. However, it was pointed out that sage grouse are consistent in the use area, and it is not expected that it will change that much.
 - Gunnison Sage Grouse
 - This is primarily a Colorado effort.
 - Less than 10% are in UT, with most being in the Monticello and I-70 near Moab areas.
 - Solar Programmatic EIS
 - The intent is to make solar applications easier to process.
 - Onshore Oil & Gas Leases Rule
 - The draft has been released for public comment.
 - This will modify the existing rules to reflect the Inflation Reduction Act. The last update was in the 1950s.
 - Impacts include:
 - Fees
 - Term length of APD's
 - Bonding Amounts & Requirements
 - Length of time for idle wells
 - There is a Fact Sheet on file and the phase in period for industry is 1-2 years.
 - SITLA Land Exchange of 2023
 - 165,000 acres of BLM land to 160,000 acres of SITLA land, throughout UT in 20 different counties.
 - There was a hearing in June regarding this. No issues are expected.
 - Proposed Grazing Rules Modifications
 - Not moving forward currently.

Utah RAC Membership Updates

Designated Federal Officer, Utah State Director Greg Sheehan

- Future Meetings
 - Next UT RAC Meeting is November 14 & 15, 2023.
 - Meeting Agenda Requests

- Recreation
 - Public Lands Rule Updates
 - Fee proposals for campgrounds, include previous term approvals for history.
 - No new action items currently.
- Start looking at dates for meetings for possible conflicts. The dates must be submitted to the Federal Registrar about six months ahead of time. There have been some conflicts with other meetings recently.
- RAC Openings
 - Announcements have gone out to fill vacancies and have already closed.
 - UT RAC will have two openings (2 for Category 3 and 1 for Category 2) in September 2023 and one in January 2023. Otherwise, all other members are set until March 2025.
 - Bears Ears RAC – 1 vacancy
 - Grand Staircase-Escalante – Several vacancies. They have 15 slots and last attendance only had 6/7 people.
- Only this RAC has the ability to recommend Recreation Fee Business Plans statewide. The other RAC's simply provide advice and comments on specific land management areas

National Recreation Update

Division Chief of Recreation & Visitor Services, Kevin Oliver

- Please see presentation attached. (Keep in mind, the presentation tracks visitors, not fees).
- BLM Blueprint for 21st Century Outdoor Recreation
 - Draft status, with planned national rollout. Public comments are being taken through September 2023.
 - The plan is for a national rollout, with a focus on the state needs.
 - The overarching goal is to promote the BLM and elevate recreation.
 - Visitors are increasing at BLM sites, but the funding has remained relatively flat, allowing for less money per visitor, especially compared to other agencies.
 - Challenges/Discussion
 - Public perception of the BLM and how that will continue to impact funding opportunities.
 - Possible solutions include focus groups to figure out the specific issues and set objectives.
 - It was noted that regardless of public perception, visitors are still coming to BLM lands and have almost doubled in numbers since 2013.
 - For every 1 NPS camp site, BLM has 13. Moab has 850 campsites alone. BLM UT is a recreation hub, and more funding is needed.
 - This is a very broad plan right now and doesn't necessarily explain how it's going to get down to the district/local level.

- Technology has out paced us with internet and social media. Newspapers are becoming more extinct, but things like Facebook are still prominent ways to get news.
- The goals of this plan should build on one another and work together. Access and quality should be a priority. Inclusion and fairness are also relevant. Congress support is needed not only funding, but for public perception to know that BLM is just not making rules itself.
- Advisory Council Members discussed Fee structures
 - Possibility of one fee, a statewide pass, to encompass all sites.
 - May lose fees at small sites.
 - Some believe it may increase revenue, as people will pay for one pass, one time, instead of paying at every site, especially when it's mostly honor system based.
 - There may be a way to track each site so funds could disperse to the appropriate office when collected. Right now, it's instant. Paying a statewide fee, could complicate this structure.

Wild Horse & Burro Program

Wild Horse & Burro Program Manager, Gus Warr

- Please see presentation attached (Presentation is only for BLM. Does not include tribal).
- Program Goals (Please note, BLM does not do any veterinary care)
 - Fertility Control
 - Maintain healthy herds.
 - Health & Welfare of animals
 - Place excess animals in good homes.
- Steady increase in animals since 2013.
- BLM has not been at AML since 2004.
- Horses that are part of this program range in ages from young to senior.
 - Mortality rates are 1-3%
 - Horses can be titled after 1 year if adopter meets requirements and takes proper care of the animal.
- Fertility Control
 - Spaying – Every time the BLM has brought this up, it has resulted in litigation.
 - PZP – Good for 1 year.
 - PZP-22 – Hand injection, good for 2 years, maybe 3
 - GonaCon – 1 shot, good for 1 year. 2 shots, 2-3 years and 2 shots can get 4-6 years.

Green River District Planning Updates

Green River District Manager, Lance Porter

- Please see presentation attached.
 - Green River District Characteristics
 - 190 employees.
 - Includes Price Field Office & Vernal Field Office.
 - Multiple Use Mission
 - Recreation, Oil & Gas, Paleontology, Patents (Auth's given by HQ & SO)
 - Dingell Act
 - 17 new wilderness areas
 - Also designated a RAC for San Rafael Swell area.
 - 6 Land conveyances
 - Gilsonite – Unique to the Basin.
 - Coal – Supplies 1/3 of the total power to Utah.
 - Renewable Energy – Transmission Lines
 - Well Pad Reclamation – Plugging Abandoned Wells

Public Comment Period

- Mike Hyde
 - 29 counties in Utah have RMP's, each with their own needs. As BLM moves forward, the hope is that BLM will consider every RMP and the local needs, as goals and objective are made. Be consistent to the local area, recognize local level needs and keep access for all. There are concerns with the Public Lands Rule and the Fluids & Minerals Rule. For thought, companies should have to pay, but is the jump in bonding going to be too expensive for companies or are wilderness areas going to be taken away?
- Larry Ellertson
 - Multiple use is a concern, simply because this is public land. All the entities should be able to work together for the best uses of the lands. Keeping in mind that, if it can be shared, it should be shared. No one resource is more important than the other, so they must work together and there should not be a preference in use.
- Clay Crozier
 - It's important that as BLM moved forward, there is fairness, equity and inclusion of all, including motorized vehicles. There are concerns about restrictions with motorized vehicles on public lands. One thing to note is that this plan has congressional support as an outer bubble, and it appears that BLM is trying to control all. However, congress support is needed not only for funding, but for public perception to know that BLM is just not making rules itself.

Paleontology Advances in Utah

BLM Utah Paleontologist, Dr. Alan Titus

- Please see presentation attached.
- Utah is very rich in paleontology.
 - BLM manages a lot of the lands that have these resources.
 - Utah also has 2 themed paleontology visitor centers.
 - Paleontologists are important because they can be the bridge between excavating new finds and making sure the integrity of the land is kept.
- Research
 - Tyrannosaurus Rex Diversity
 - Last Chance Mosasaur
- Discussion
 - There are trade-offs between approach and awareness, as vandalism can be a byproduct.
 - Promotion adds value to the BLM because of the cultural resources being managed. The public should understand the unique resources and the support that is necessary for it. Public buy-in is necessary, but it becomes a liability and comes at a price.
 - 99% of inventory is found simply by looking for it. Public reporting also results in important finds, but not as often.

John Wesley Powell National Conservation Area

Vernal Field Office Manager, Roger Bankert

- Please see presentation attached.
- Short film link: https://www.youtube.com/watch?v=xJZy9511_jQ
- John Wesley Powell National Conservation Area
 - The Dingell Act restricts mineral development in the Conservation Area.
 - The 2008 RMP did not take the Conservation Area into account.
 - Completed Items:
 - Botany Inventory
 - Ethnographic Study
 - Visitor Study
 - Interpretative Plan
 - John Wesley Powell National Conservation Area Impacts
 - Current and existing Range Improvement Plans are okay, but going forward, anything new will require NEPA to be performed.
 - Fire Rehab will also require NEPA.
 - Education kiosks are planned for the future.

- Carry In-Carry Out will be a focus.
- All vehicle types are being looked at regarding vehicle restrictions. Roads will also be analyzed at that time.
- The Conservation Area was brought into existence by Uintah County individuals through bipartisan legislation.
 - The Conservation Area is completely free and cannot have fees attached to it.

Utah Resource Advisory Council/Monument Advisory Committee Updates

Designated Federal Officer, Utah State Director Greg Sheehan

- Meetings
 - May 24 & 25 – San Rafael Swell RAC was taken through the Swell to see the recreation and the resources.
 - Next San Rafael Swell RAC Meeting
 - Aug. 31, 2023 – Castle Valley Special Service District Building in Castle Dale, Utah
 - All are invited.

Wrap-Up Discussion

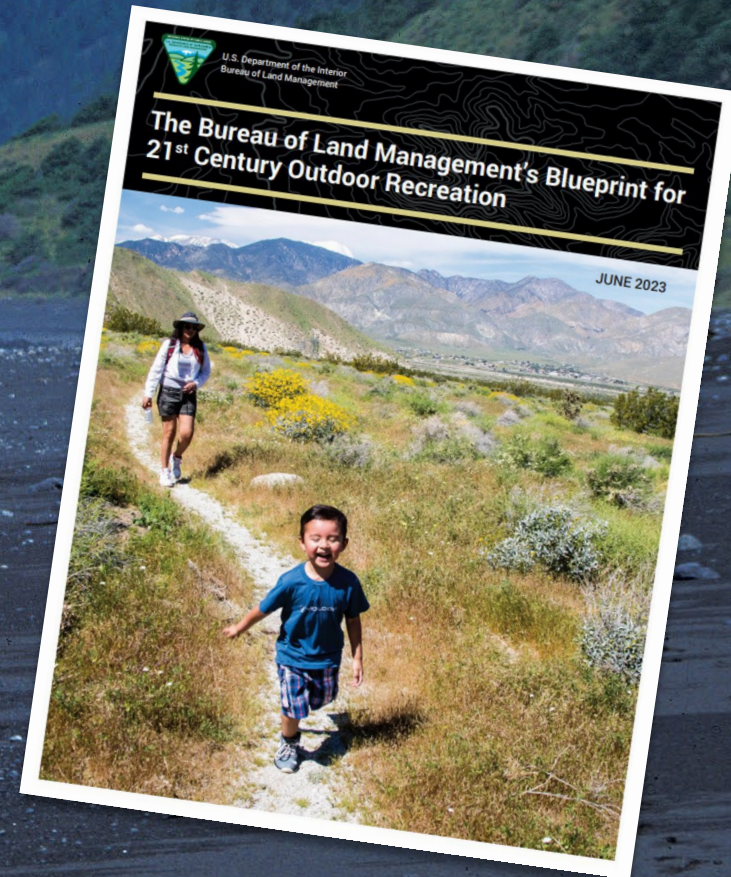
Resource Advisory Council Members

- Utah Resource Advisory Council
 - Next Meeting: November 14 & 15, 2023 – Blanding, UT
 - Future Meeting: March 20 & 21, 2024 – St. George, UT
 - Future Meeting: August 14 & 15, 2024 – Logan/Bear Lake Area
- Potential agenda Items for future Meetings
 - Public Lands Rule
 - Recreation
 - Action Items, if any
 - Archeology Updates
 - Fire/Rehab Updates & Wrap-Up
 - Warner Valley Land Exchange
 - Northern Corridor Updates
 - Dispersed Camping
 - Approved Fee Updates
 - Bipartisan Infrastructure Law Funding



U.S. Department of the Interior
Bureau of Land Management

The Bureau of Land Management's Blueprint for 21st Century Outdoor Recreation





U.S. Department of the Interior
Bureau of Land Management

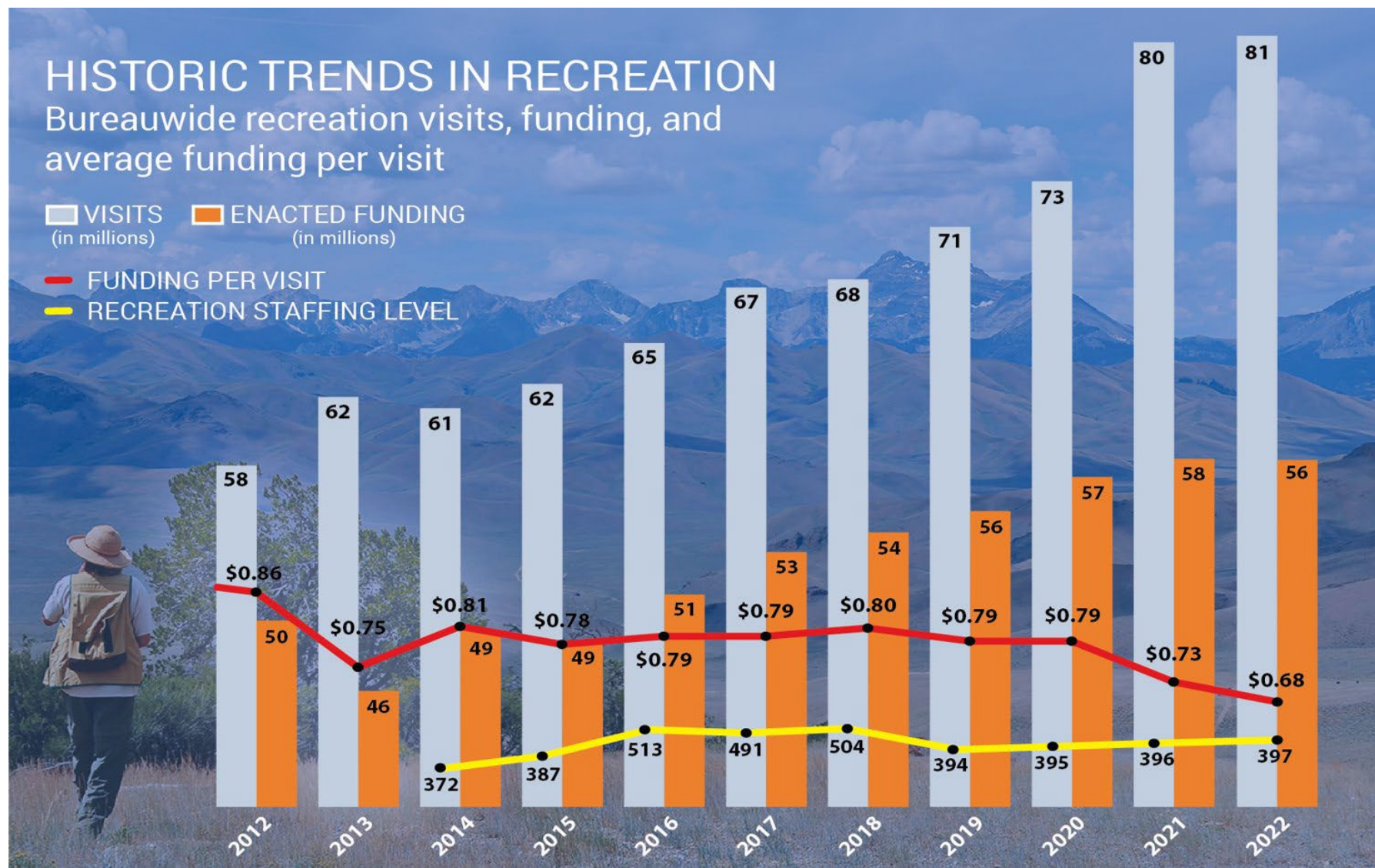
Blueprint vision

To provide exceptional and one-of-a-kind recreational experiences that invite all to share in the enjoyment and stewardship of their public lands.



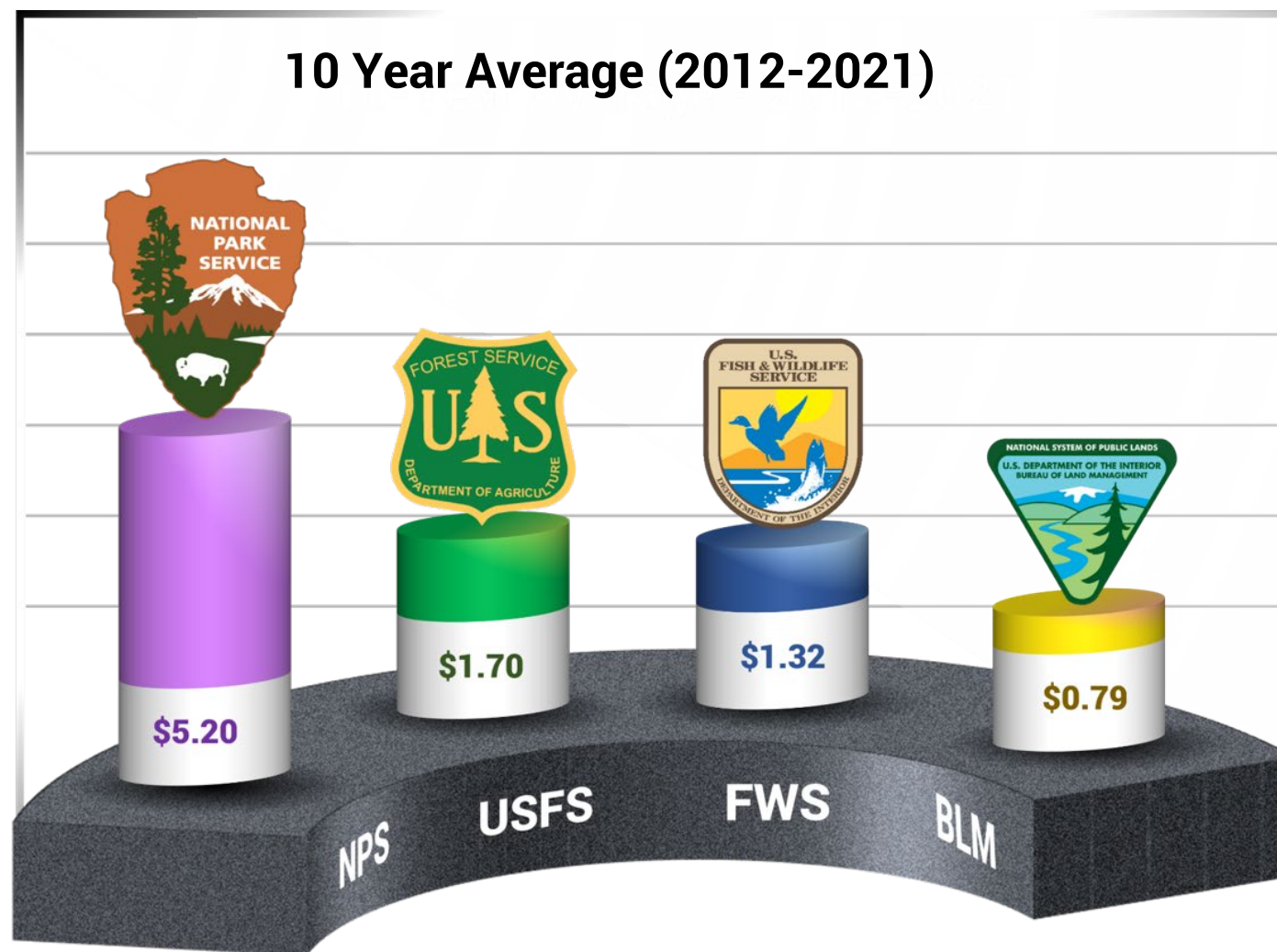
Blueprint – the Case for a New Approach

- Visitation has increased over the past 10 years.
- Funding per visit is down.
- Staffing loss ~20% since 2018.





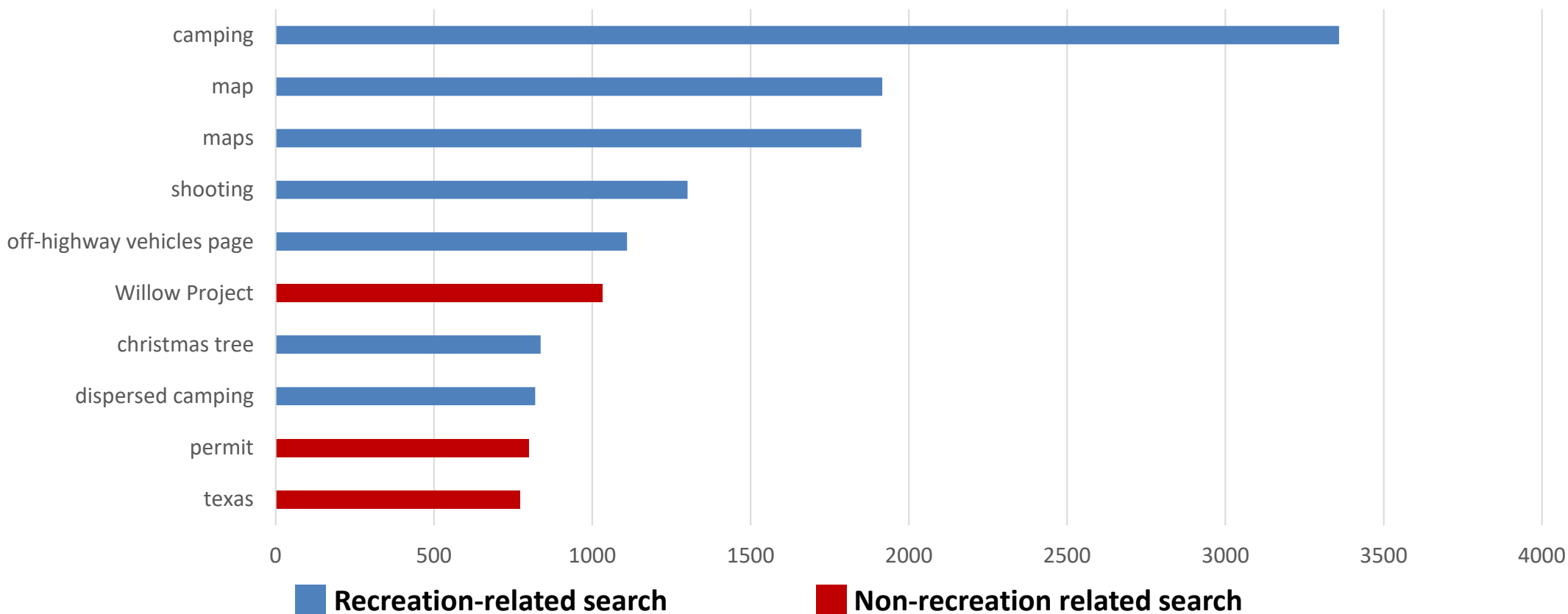
Funding per visitor





Public Interest in BLM = Recreation

Oct 2022-May 2023 Top Search.gov queries



13,798 Total Searches

11,193 Recreation-Related Searches

81% of Total Searches were Recreation-Related



Foundation Role

- Hosting & Facilitating Roundtables with Partners and BLM Staff
- Focusing on Implementation Concepts & Approaches
- Will provide a report/summary to BLM





Awareness

- **Dates:**
- **Press Release Roll out TBD**
- **Taking Public Comments through 30 SEP 2023**
- Internal BLM Implementation Idea Sessions 30 & 31 August
- Foundation Roundtables Las Vegas September 6 & 7 + Virtual (October)
- Considering State Level implementation summits Spring 2024 (tbd).



Blueprint Highpoints

- Bold call for increased recreation funding – targeting 3X current “all sources” funding, especially through foundation
- Advances Equity in Outdoor Recreation
- Addresses Challenges of Increased Visitation





Blueprint Vision and Key Concepts

"Our Blueprint vision is to provide exceptional and one-of-a-kind recreational experiences that invite all to share in the enjoyment and stewardship of their public lands."

Four Strategic Pillars:

01

Grow and
diversify funding
for BLM
recreation

02

Prioritize and
embrace
partnerships

03

Expand outreach
and establish a
culture of
inclusion

04

Meet the
demand, protect
resources and
improve access



Blueprint Structure

- Strategic Pillars
 - Desired Outcomes
 - Core Strategies





Why ask for 3X's "All Sources" Funding ?

Key Funding Needs:

- Prioritizing recreation by providing resources
- Dependable Community liaison program (FWS Urban refuge example, NPS example)
- Access to public lands – approved travel routes, landlocked public lands, transportation grants to underserved communities
- Meeting demand, protecting resources, youth programming



Basis for 3X's "All Sources" Funding ?

- Current base Funding = \$55 million
- State budget needs estimates – state feedback
- Program estimates: Community engagement, Travel/Access, Deferred Maintenance
- If funded at comparable land management agencies level per visitor (~\$1.70) = \$178 million (3.2x)



Desired Outcomes: Grow and Diversify Funding

- BLM prioritizes and resources recreation program
- Exceptional opportunities for outdoor recreation
- Reduction of impacts on sensitive resources





Desired Outcomes: Prioritize and Embrace Partnerships

- BLM prioritizes shared stewardship and improved management opportunities
- We see a diversity of visitors experiencing the benefits of outdoor recreation on public lands
- Recreation program contributes more open and accessible recreation opportunities for all
- All levels of BLM are ready and able to embrace partnerships
- Communities and groups know they will find BLM offices prepared for partnership





Desired Outcomes: Expand Outreach and Establish a Culture of Inclusion

- Improve BLM's brand; provide one of a kind recreational experiences on BLM lands
- Youth, underserved communities and more people generally know BLM recreation opportunities as holding something of value for them
- Conservation values are embraced by new users
- Diverse communities see themselves reflected in the makeup of BLM staff, services and resources

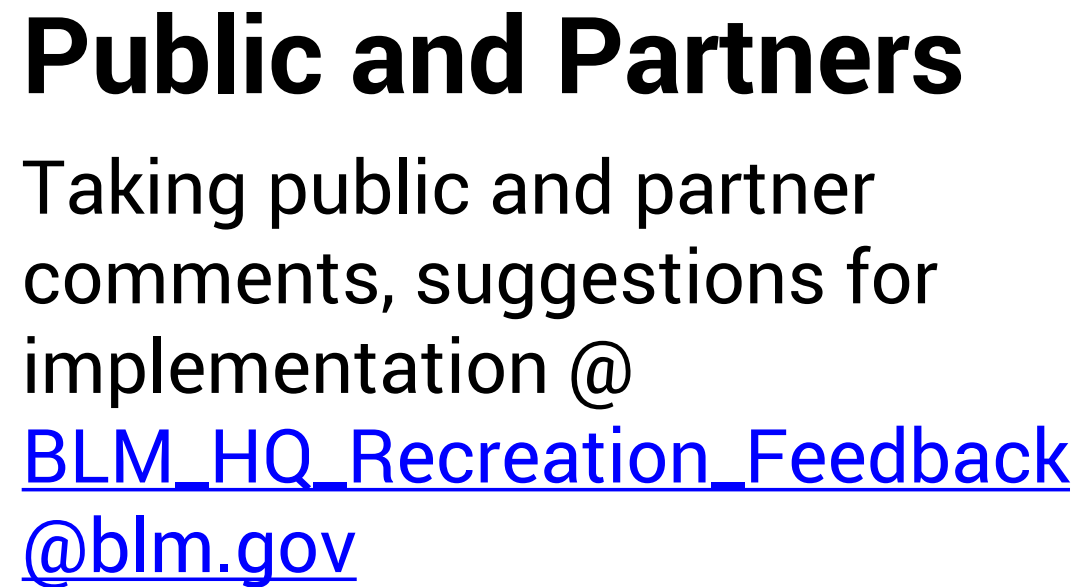
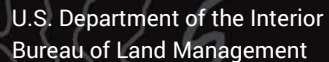




Desired Outcomes: Meet the Demand, Protect Resources and Improve Access

- Improve visitor use data across the landscape
- BLM systems rapidly identify impacts to sensitive lands
- Proactive management to avoid or mitigate impacts
- Access to BLM-managed lands is widely available, clearly marked and supported by travel management plans
- Public lands lacking adequate legal access are resolved, increasing opportunities for all.







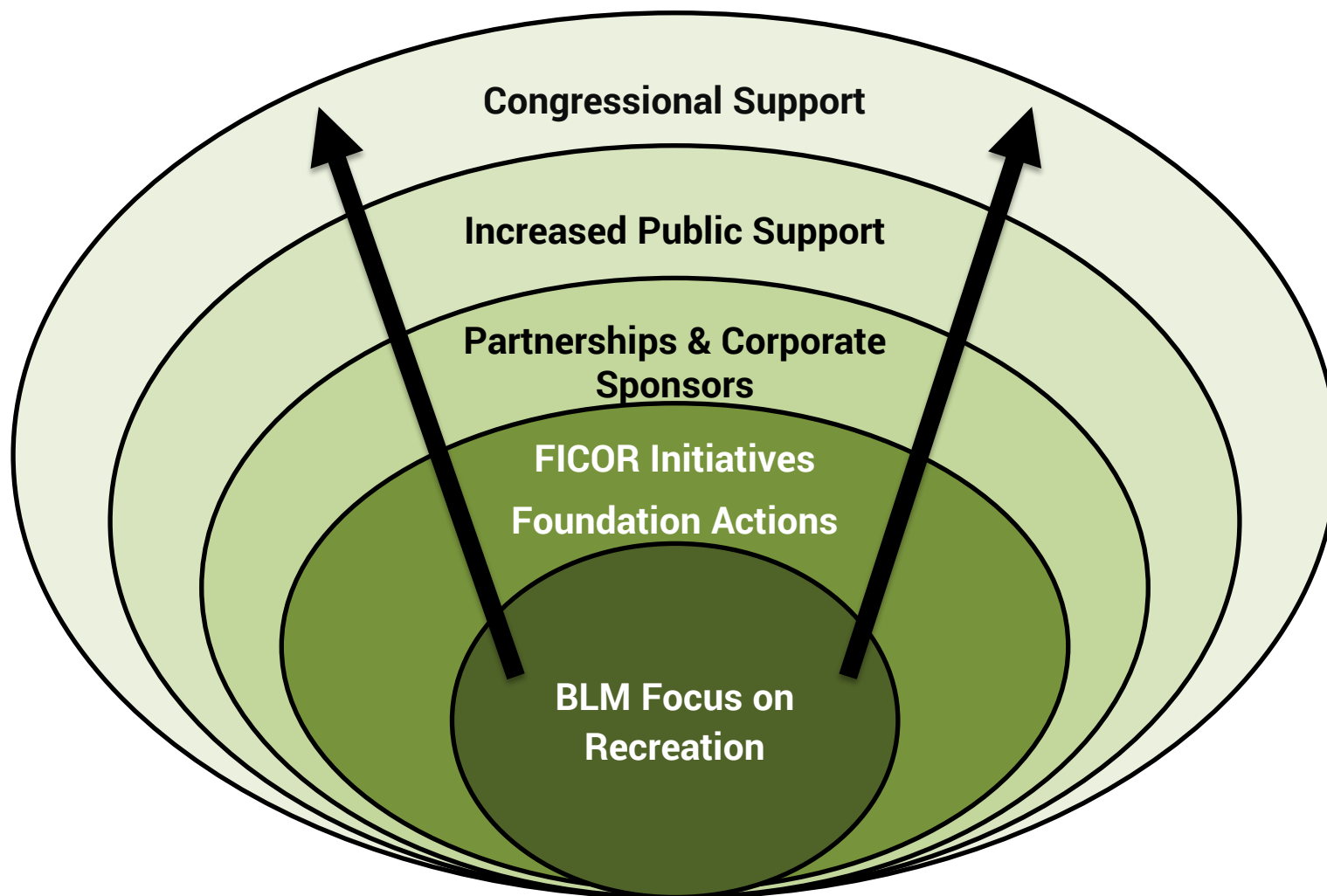
How it Ties Together

Blueprint Aligns with:

- ✓ Federal Interagency Council for Outdoor Recreation
- ✓ Equity in Outdoor Recreation
- ✓ Public interest in BLM



Blueprint Impact: Meet the Needs of Today and the Future





Building on Success

- ✓ High-impact investing in and partnering with BLM
- ✓ Nimble approach/agency culture
- ✓ State-level stepdown plans



D.C. Roundtable Feedback



- Enthusiastic Partner Support
- Diversity in Partners is key (Wilderness to OHV)
- State Stepdown planning Template development of interest
- Long game sustained & evolving effort
- The Foundation is the new opportunity & be patient
- How to bring Technology to address issues



"Exceptional and One-of-a-Kind Recreational Experiences"



Questions?



U.S. Department of the Interior
Bureau of Land Management

Wild Horse and Burro Program



V. Gus Warr
Wild Horse and Burro Program Manager/WHB Branch Chief
BLM Utah State Office



WHB Program Goals



- Maintain healthy herds on healthy rangelands
- Increase population growth control on the range (fertility control)
- Ensure the health and welfare of animals in our care
- Place excess animals into good homes



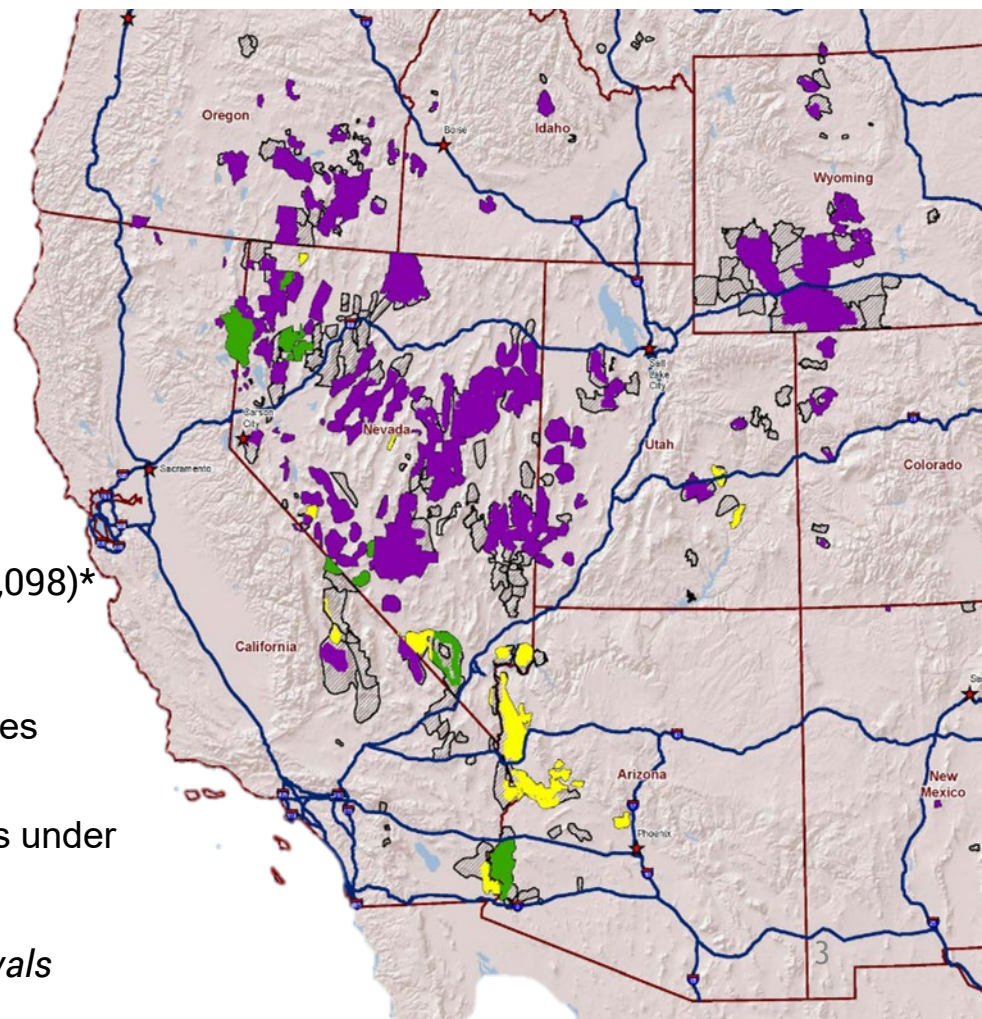


Wild Horse and Burro Program



- **177** herd management areas
- **26.9** million acres of public lands
- **10** western states
- **26,785** appropriate management level
- **82,883** current population estimate **on-range** (+56,098)*
- **59,485** excess animals in **off-range** holding facilities
- **115,583** total excess animals under BLM Management

* = Does not include 2023 foals or removals



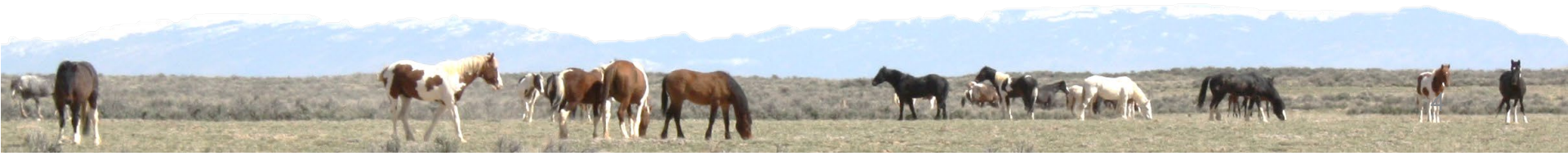
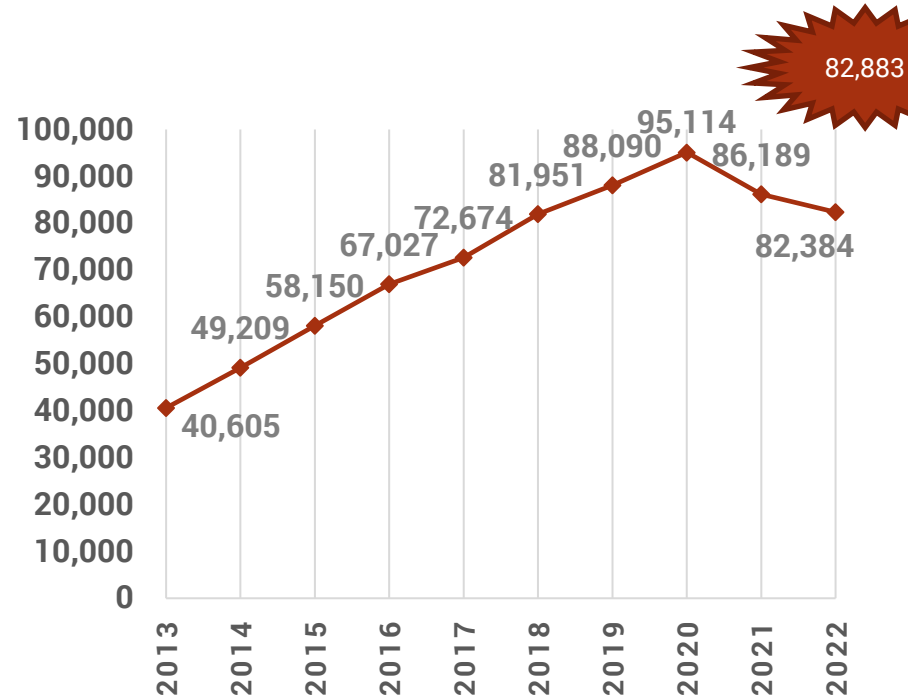


Estimated On-Range Population Size

Estimated Wild Horse and Burro Populations on
BLM-managed Public Lands as of March 1, 2023

State	Total	Max. AML	Excess
Arizona	6,670	1,676	4,994
California	7,020	2,200	4,820
Colorado	1,527	827	700
Idaho	651	617	34
Montana	205	120	85
Nevada	49,268	12,811	36,457
New Mexico	385	83	302
Oregon	4,573	2,700	1,873
Utah	3,756	1,956	1,800
Wyoming	8,828	3,795	5,033
Total	82,883	26,785	55,098

Estimated Wild Horse and Burro Populations on
BLM-managed Public Lands, 2013-2023





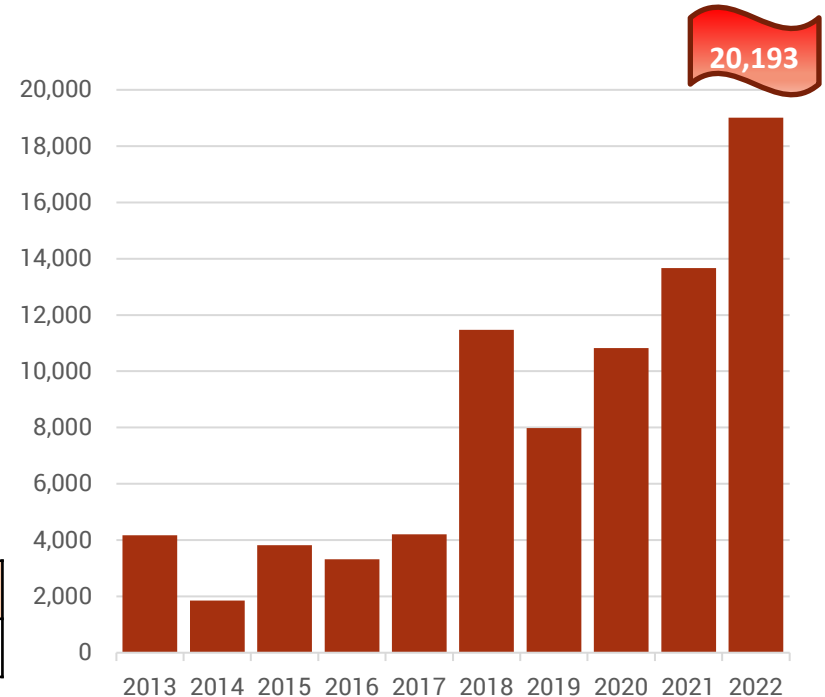
Management Tools:

Gather and Removals

- Only effective way to reduce overpopulation
- BLM has increased removals in last five years to control populations
- Gathers are necessary to apply fertility control in many HMAs

Animals Gathered '22	Animals Removed '22
21,999	20,193

Wild horse and burro removals, 2013-2022





Management: On-Range

Population Growth Suppression



- Vaccines (currently in use PZP, PZP-22 and **Gonacon**) are administered during gather operations.
- Darting programs occurring in 7 states, with 614 animals darted in FY-22.
- Intrauterine devices being applied Utah & Wyoming!
- Sex-ratio adjustments.





Management: On-Range

Population Growth Suppression



Fiscal Year	PZP	PZP-22	GonaCon	IUD	Total
2022	530	475	586	31	1,622
2021	673	155	324	8	1,160
2020	563	31	141		735
2019	549	59	52		660
2018	580	110	12		702
2017	422	355			777
2016	334	118	15		467
2015	286	183			469
2014	319	65			384
2013	199	310			509
2012	162	883			1,045





U.S. Department of the Interior
Bureau of Land Management

UTAH WILD HORSES & BURROS

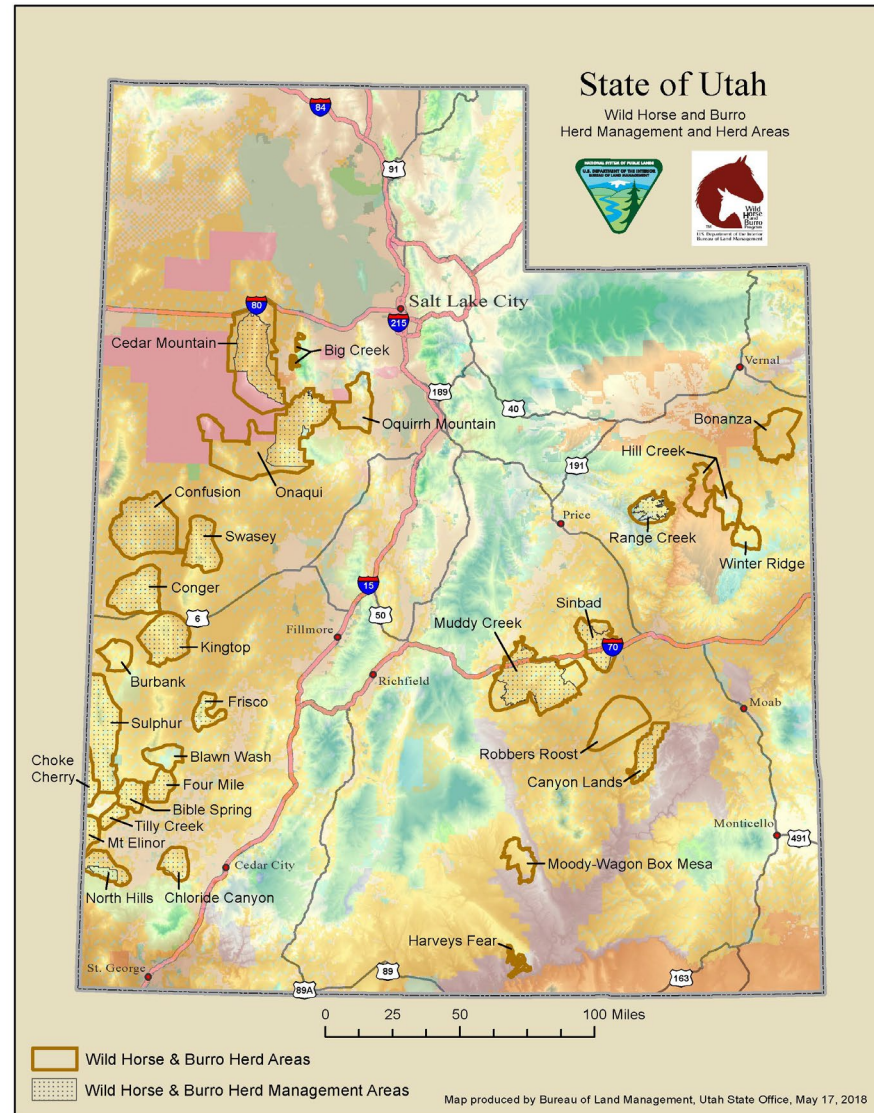




Utah WH&B Areas



- 19 - Herd Management Areas (HMA)
 - 17 horses
 - 2 burros
- 10 - Herd Areas (HA)
 - All horses
 - 3 with zero populations





Utah - Wild Horse & Burros

Estimate As of March 01, 2023

- Current Estimated Populations = **3,756 animals**
(November 2019: Over 6,000!)
 - ✓ 3,555 wild horses
 - ✓ 201 wild burros
- UTAH Appropriate Mgmt. Level = 1,956
 - ✓ 1,786 for Horses & 170 for Burros
 - ✓ Current populations are at 192% of AML



Past, Current and Planned WH&B Removals in Utah



- FY-15: **132** horses
- FY-16: 134 burros & 475 horses – **609 Total**
- FY-17: **1,000** horses
- FY-18: **1,128** horses
- FY-19: **419** horses
- FY-20: 36 burros & 1,978 horses – **2,014 Total**
- FY-21: **1,074** horses
- FY-22: 153 burros & 1,113 horses – **1,266 Total**



Utah Fertility Control

2023 NOFO Awards & Others

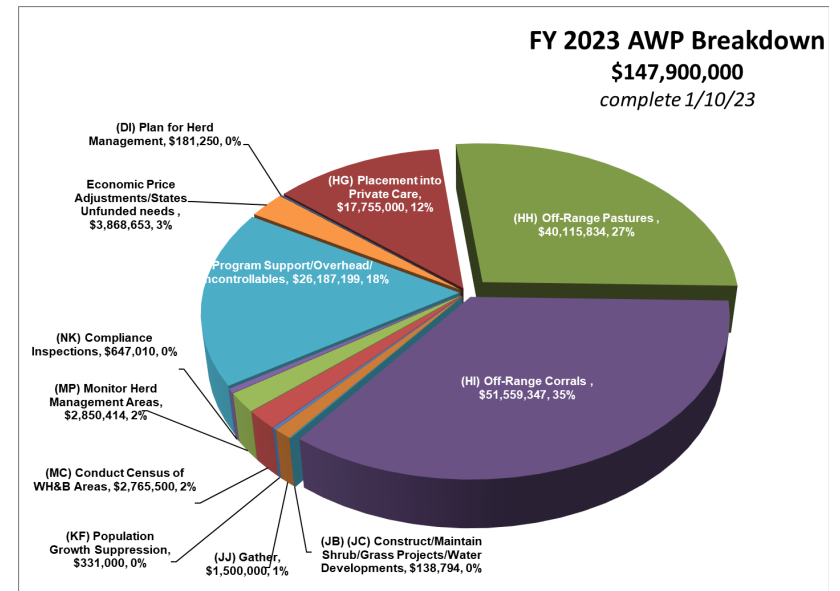
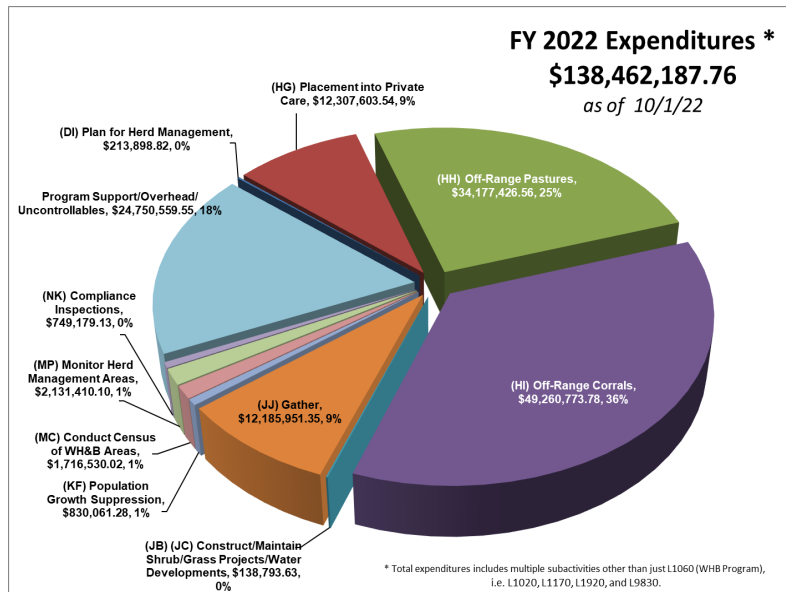


- WHOA – Onaqui HMA (5 year)
- AWHC – Cedar Mountain HMA (2 year)
- Private Land Agreement – Range Creek HMA
- BLM darting Muddy Creek HMA
- Individual HMA CTHR gathers – Sulphur & Swasey HMA's





Fiscal Year 2022 Expenditures and Fiscal Year 2023 Projected Budget - Updated





Questions ?



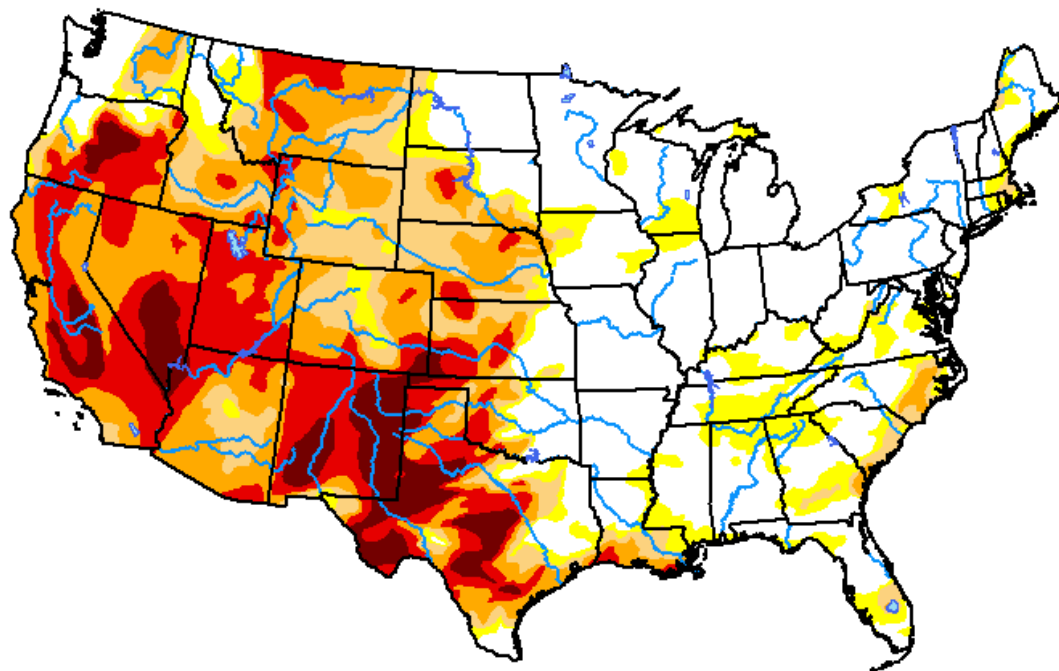


U.S. Drought Monitor Contiguous U.S. (CONUS)

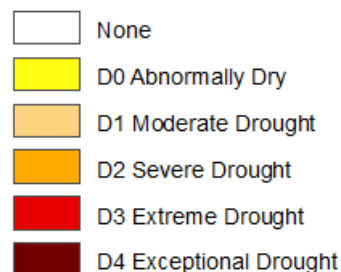
May 24, 2022

(Released Thursday, May. 26, 2022)

Valid 8 a.m. EDT



Intensity:



The Drought Monitor focuses on broad-scale conditions. Local conditions may vary. For more information on the Drought Monitor, go to <https://droughtmonitor.unl.edu/About.aspx>

Author:

Richard Heim
NCEI/NOAA



droughtmonitor.unl.edu

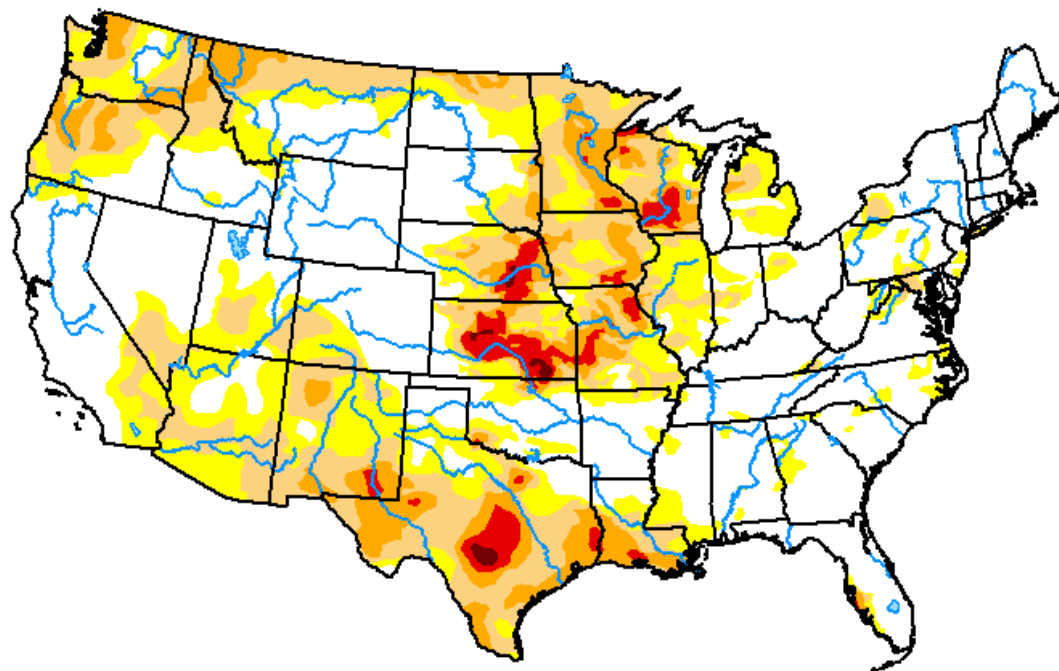


U.S. Drought Monitor Contiguous U.S. (CONUS)

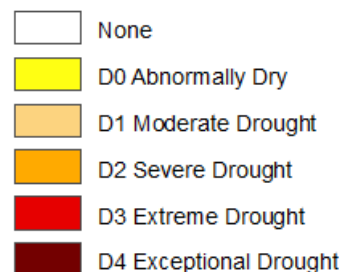
August 8, 2023

(Released Thursday, Aug. 10, 2023)

Valid 8 a.m. EDT



Intensity:



The Drought Monitor focuses on broad-scale conditions. Local conditions may vary. For more information on the Drought Monitor, go to <https://droughtmonitor.unl.edu/About.aspx>

Author:

Brad Pugh
CPC/NOAA



droughtmonitor.unl.edu





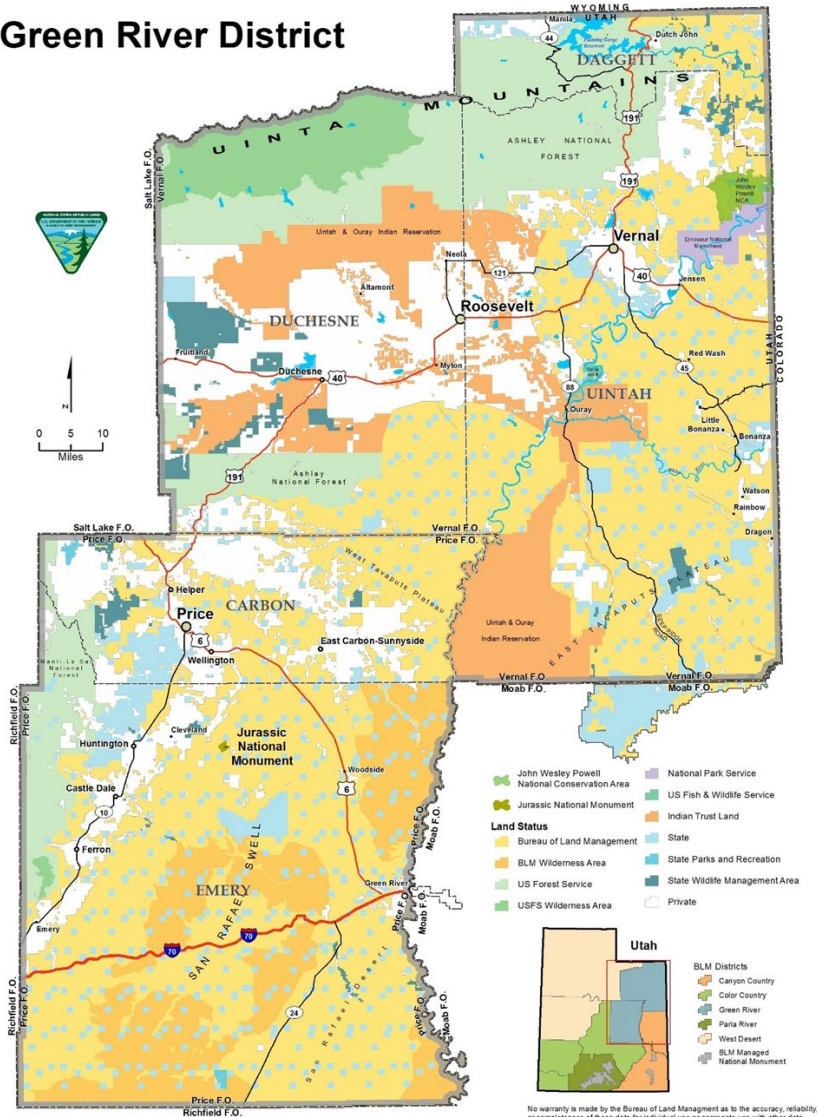
U.S. Department of the Interior
Bureau of Land Management

Green River District

Utah Resource Advisory Council, August 15, 2023



Green River District



Who We Are

- Two field offices- Vernal & Price
- 4.2 million planning acres
- District boundary that spans 5 different counties (Daggett, Uintah, Duchesne, Carbon & Emery)
- Approximately 190 employees



U.S. Department of the Interior
Bureau of Land Management



Implementing the Multiple-Use Mission



National Conservation Land Systems

- John Wesley Powell NCA 29,868 acres
- Jurassic National Monument 850 acres
- National Historic Trail 68 Miles
- 17 Wilderness Areas 653,722 acres
- 9 Wilderness Study Areas 141,816 acres
- Wild and Scenic River 63 miles



Paleontology



U.S. Department of the Interior
Bureau of Land Management



Conservation



U.S. Department of the Interior
Bureau of Land Management

**Areas of Critical
Environmental Concern -
The GRD has 20 ACECs
covering 335,375 acres.**



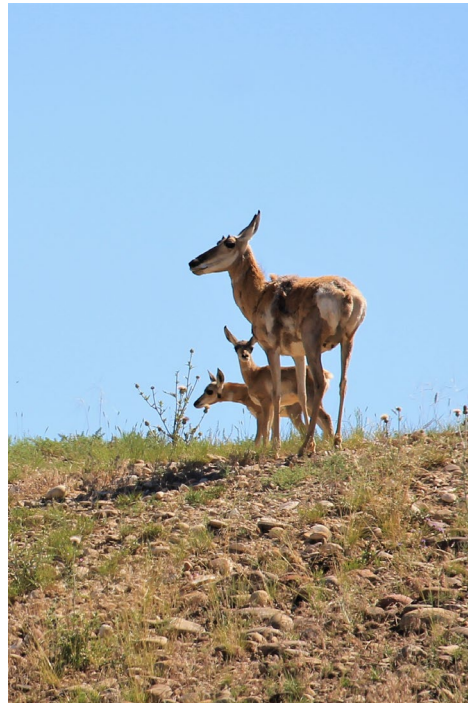
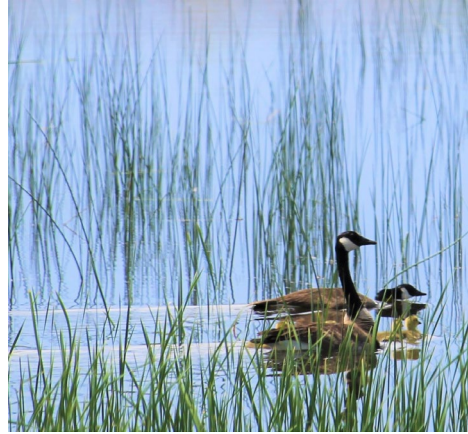


Pariette Wetlands |



Pariette Wetlands

- 2023 water surveys completed
- 2023 water rights secured
- BLM will be able to manage the wetlands in perpetuity





Pariette Wetlands

- Watershed Restoration Initiative projects will restore nearly 1,000 acres of wetland riparian habitat
- Creating crucial habitat for migrating fowl and songbirds, as well as big game species such as pronghorn, deer, and elk



U.S. Department of the Interior
Bureau of Land Management



Stirrup Wetlands



Stirrup Wetlands

- 2021 construction began
- 2022 Wetlands flooded
- Partnership with Bureau of Reclamation, Fish and Wildlife Service, and Division of Natural Resources





Recreation

- McCoy Flats National Trail System
- Red Fleet Downhill Flow
- Desolation/Labyrinth River
- John Jarvie Historic Ranch
- San Rafael Swell Recreation Area
- Nine Mile Canyon



Increased Visitation

- Vernal Field Office: Approximately 15% increase in visitation over the average of the last three years
- Price Field Office: Approximately 20%, increase in visitation this spring due to this year's extended season and floatable rivers



Scan & Pay



San Rafael Swinging Bridge Campground -
[Recreation.gov](https://www.recreation.gov)

Explore San Rafael Swinging Bridge Campground with Recreation.gov. These campgrounds are located just outside the South end of Buckhorn Draw where Buckhorn Wash converges with the San Rafael River. Uniquely in the heart of the

Scan & Pay

- **Current:**
 - Swinging Bridge(PFO)
 - Indian Crossing (VFO)
 - Bridge Hollow (VFO)
 - Pelican Lake (VFO)
- **Future:**
 - Buckhorn (PFO)
 - McCoy Flats (VFO)



Justenson Flats Trailhead Enhancements

- Awarded Recreation Grant from the State
- New road base and fill materials for the parking area
- A new CXT toilet installed
- Culverts added to help with water drainage
- Large boulders placed to delineate areas
- OHV routes accessed from this trailhead were repaired and maintained



Future

"The farther one gets into the wilderness, the greater is the attraction of its lonely freedom." Theodore Roosevelt





Proposed Recreational Opportunities- Vernal Field Office

- Improve visitor accessibility and experiences through:
 - Update interpretive trails at John Jarvie Historic Ranch
 - Fantasy Canyon Improvement Project
 - Lapoint Mountain Biking Trails
 - Middle Green River Boat Access



Proposed Recreational Opportunities- Price Field Office

- Continue Dingell Act implementation
- Improve the visitor experience at Jurassic National Monument through improved trails and interpretation



Special Recreation Permits



- Vernal Field Office – 65
- Price Field Office – 103





Recreation & Public Purposes Act

Congress passed the first version of the Recreation & Public Purposes (R&PP) Act in 1926 and modernized it in 1954 to meet growing demand for places to recreate in the outdoors and a growing need for public services.





Patents Given

Name	Applicant	Acres	Location	Received	Patent
School & Culinary Water	Daggett County	40	Manilla	1956	1958
2 million gallon water storage	Vernal City	10	Vernal	1961	1962
Uintah Co. Landfill	Uintah County	254.6	Vernal	1995	1997
Lapoint Landfill	Uintah County	75	Lapoint	1995	1998
Uintah Basin Shooting Complex	Uintah County	1,074.92	Vernal	2001	2005
Uintah County Buckskin Hills Complex	Uintah County	1238.92	Vernal	2008	2008



Dingell Act



Implementation

Dingell Act Implementation

- San Rafael Swell Recreation Area Advisory Council
- 6 land conveyances- Goblin Valley, Huntington Airport, Emery County Sheriff's Substation, Buckhorn Information Center and Emery City Recreation Area, Ashley Springs
- Scoping Report documenting the results of 10,383 comment letters received

Federal Mineral Development Commodities





Gilsonite



Highlights

- 5 active mines service 3 power plants which generate approximately 1/3 of the total power generated in Utah

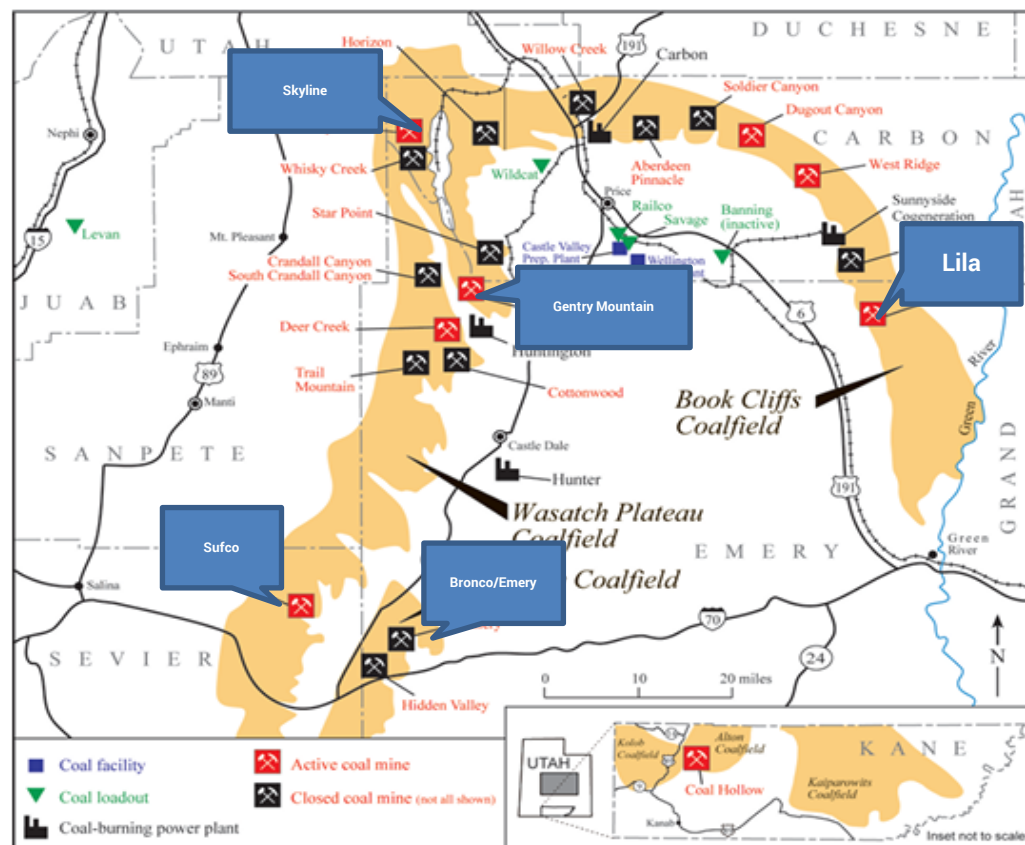


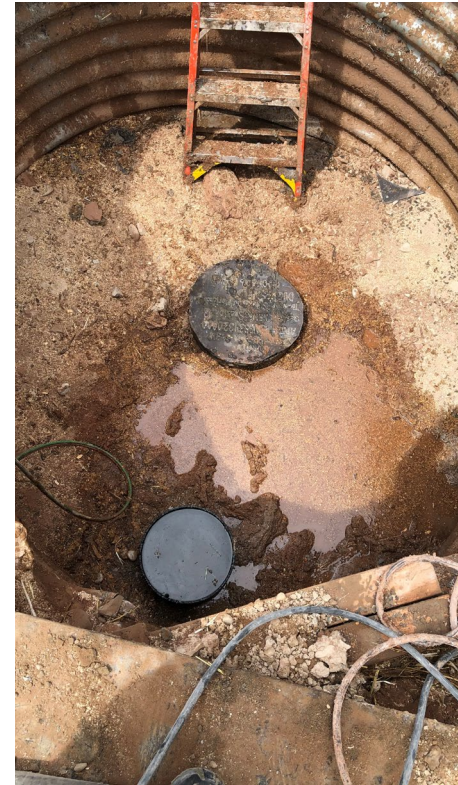
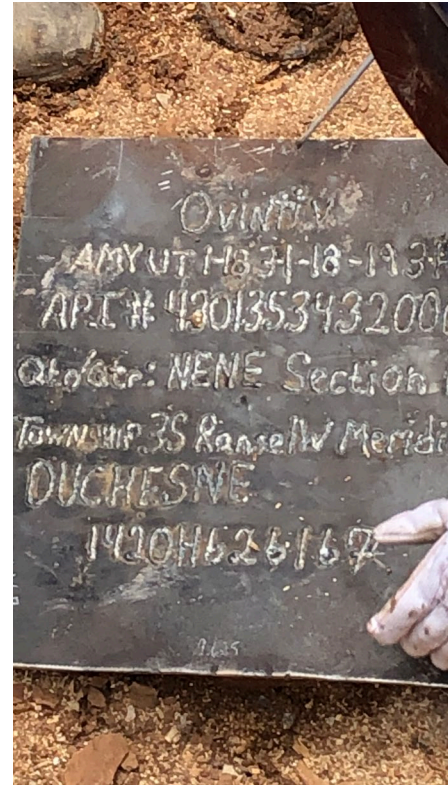
Figure 10. Location and status (at time of printing) of Utah's coal mines and associated facilities.



Important to Utah's Economy

- Through May of FY2023, the Office of Natural Resources Revenue (ONRR) has collected \$206,916,452 associated with Federal minerals in the State of Utah.
- Of the Federal mineral revenues collected, \$181,319,200 – or 87.6% - came from within the Green River District
- 50% of the revenue, or \$90,659,600, comes back to Utah
- Additional revenue from Indian Trust Assets is not calculated into this amount

Plugged and Abandoned



FY2022- 237 Notices of Intent to Plug Wells- processed
178 Subsequent Reports of plugging operations
53 final abandonment notices

FY2023- 145 Notices of Intent to Plug Wells- processed
145 Subsequent Reports of plugging operations
109 final abandonment notices



U.S. Department of the Interior
Bureau of Land Management

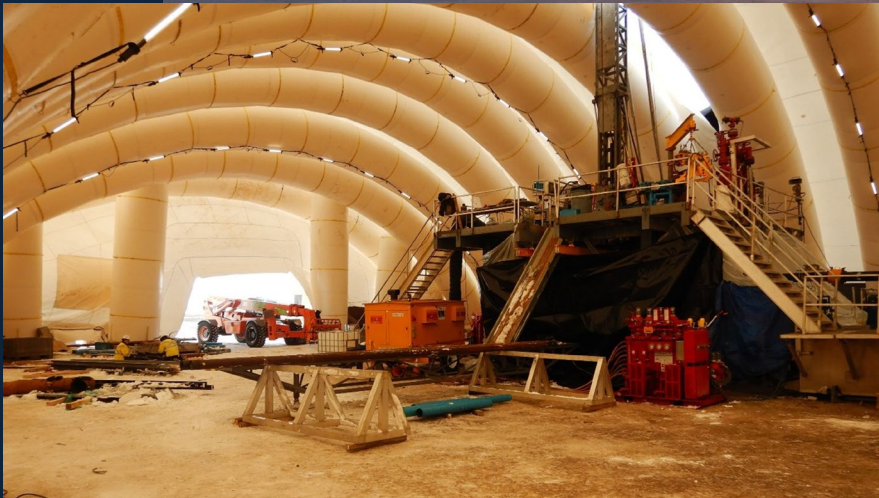
Well Pad Reclamation Partnership



Provide the knowledge and tools to reclaim well pads and right-of-ways

- 2018 project initiation, ongoing
- USGS, Industry, Vernal Field Office
- Establish and study reclamation sites on abandoned well-pads
- 8 macroplots per site
- Test reclamation tactics across vegetation communities, soil types, and landforms





Collaboration

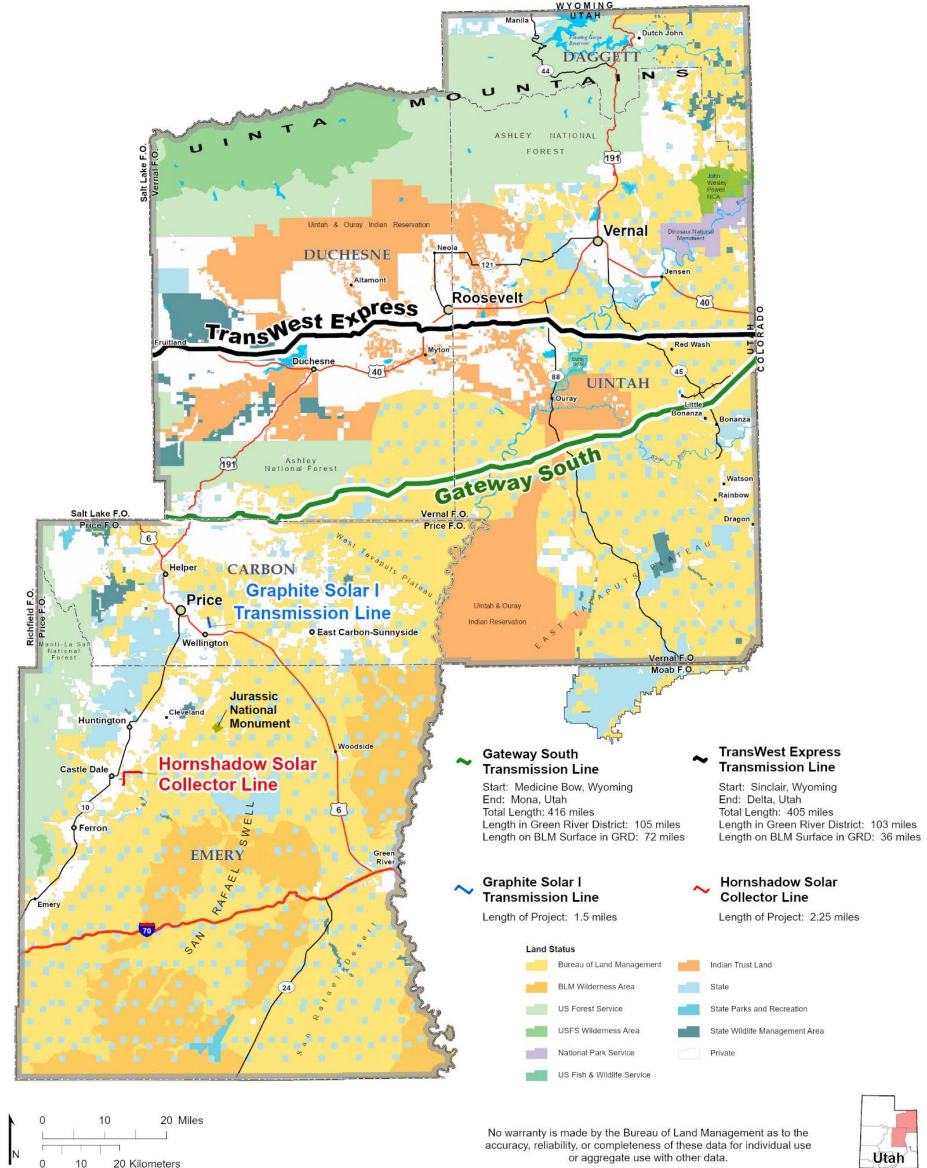
- Two Petroleum Engineer Technicians helped to plug and abandon a Legacy Well in Iko Bay, Alaska.



Renewable Energy Transmission Lines

Renewable Energy

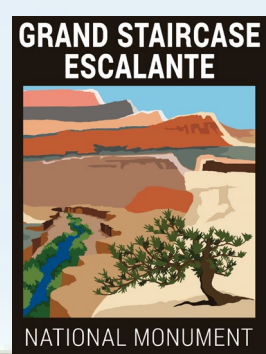
- Gateway South Transmission Lines
- TransWest Transmission lines
- Hornshadow Transmission Line
- Graphite Solar Transmission Line





Questions?



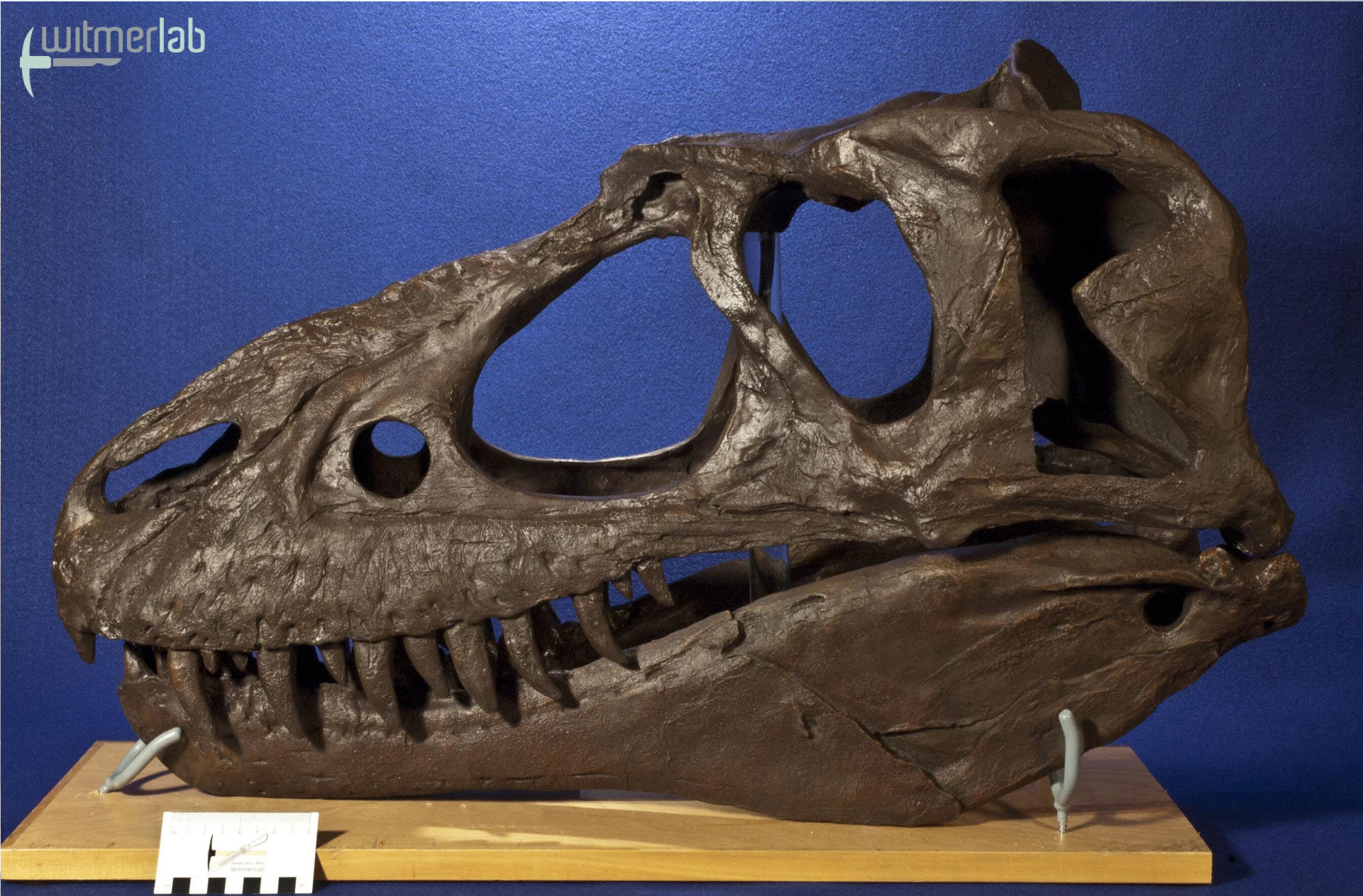


**COLORADO STATE
UNIVERSITY**

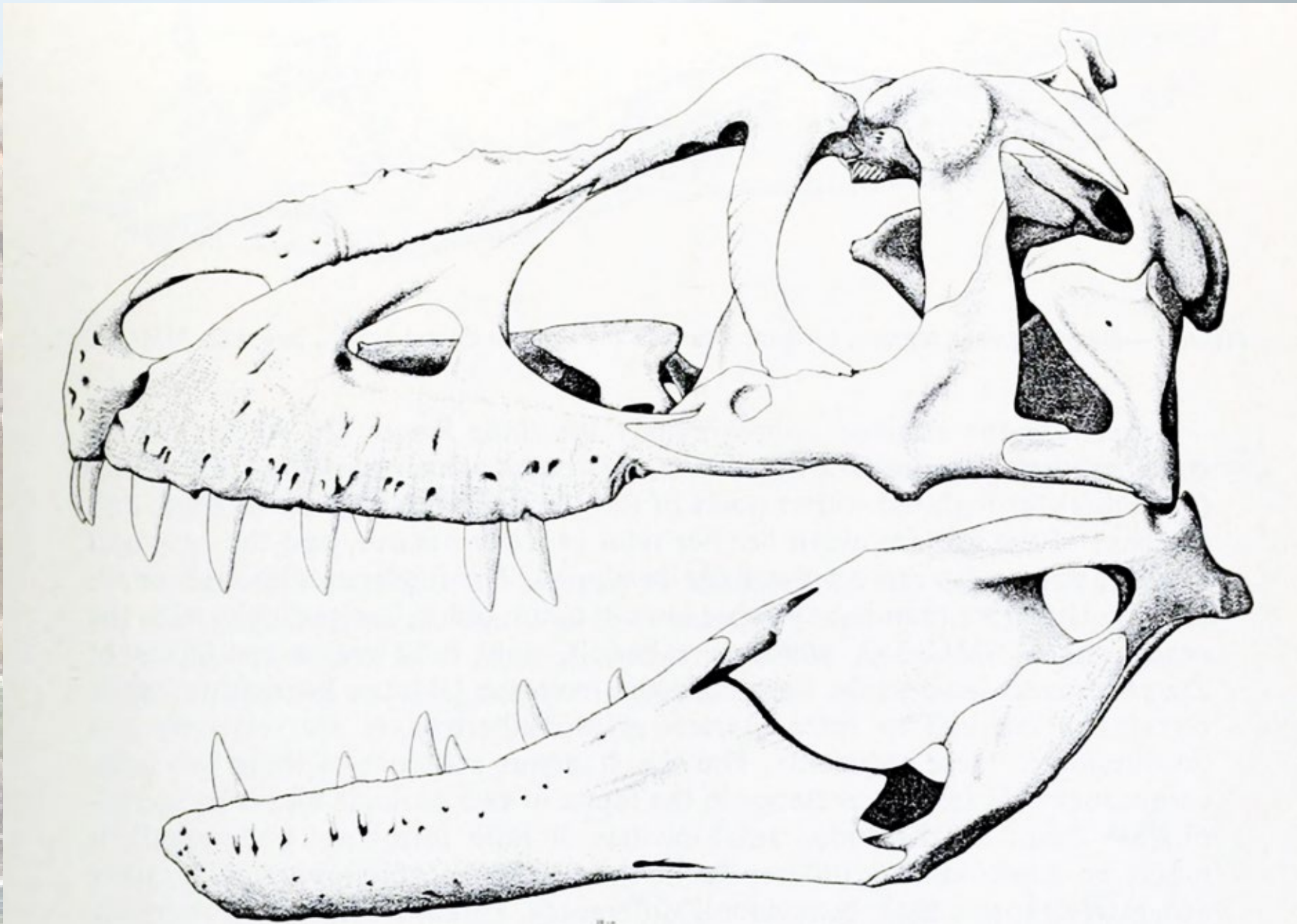
Tyrannosaurid dinosaur diversity in middle and upper Campanian (Late Cretaceous) ecosystems of Laramidia: new information from the Kaiparowits Formation of southern Utah, U.S.A.

**Alan L. Titus, Joseph J. W. Sertich,
Randall B. Irmis, Mark A. Loewen**

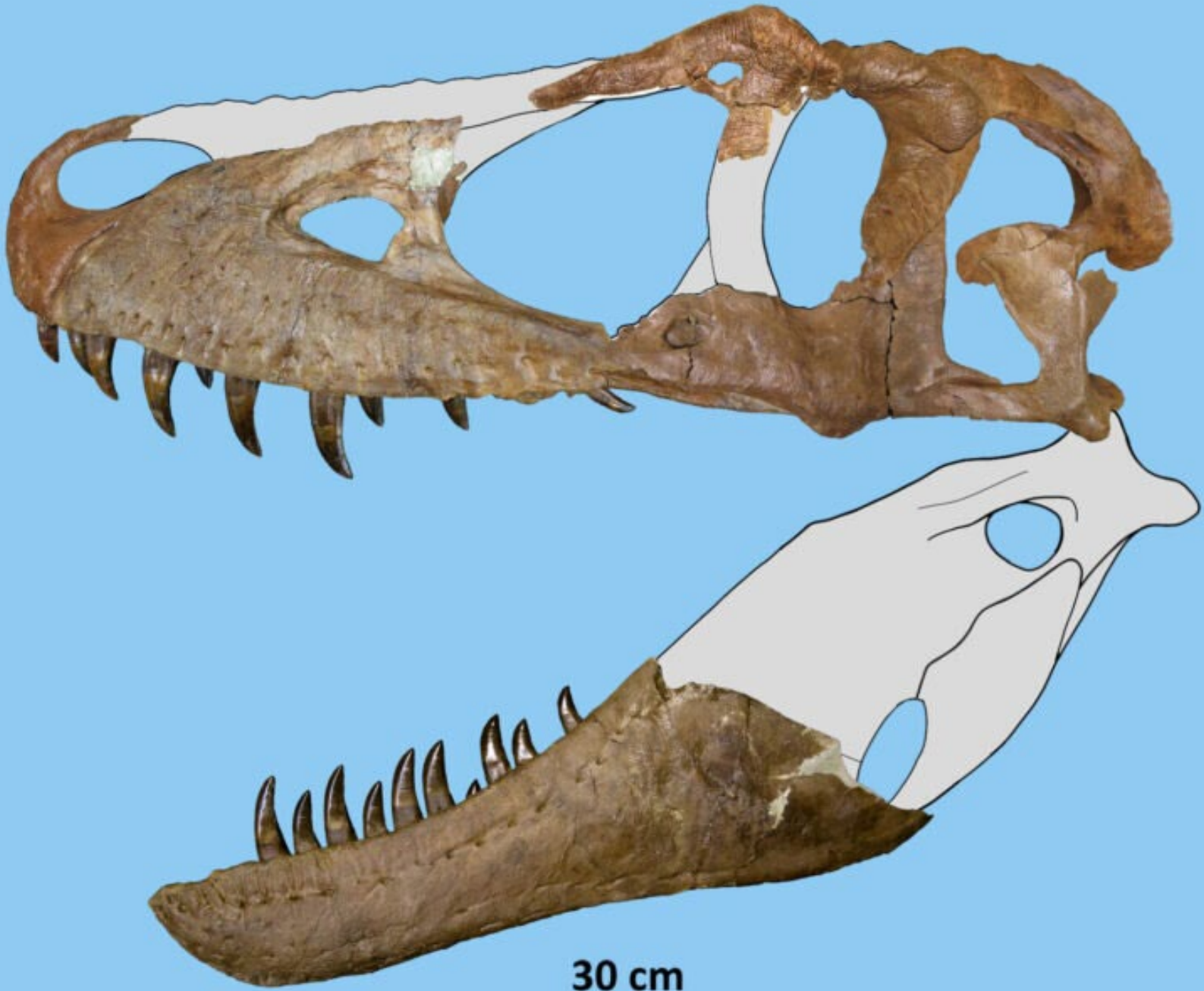
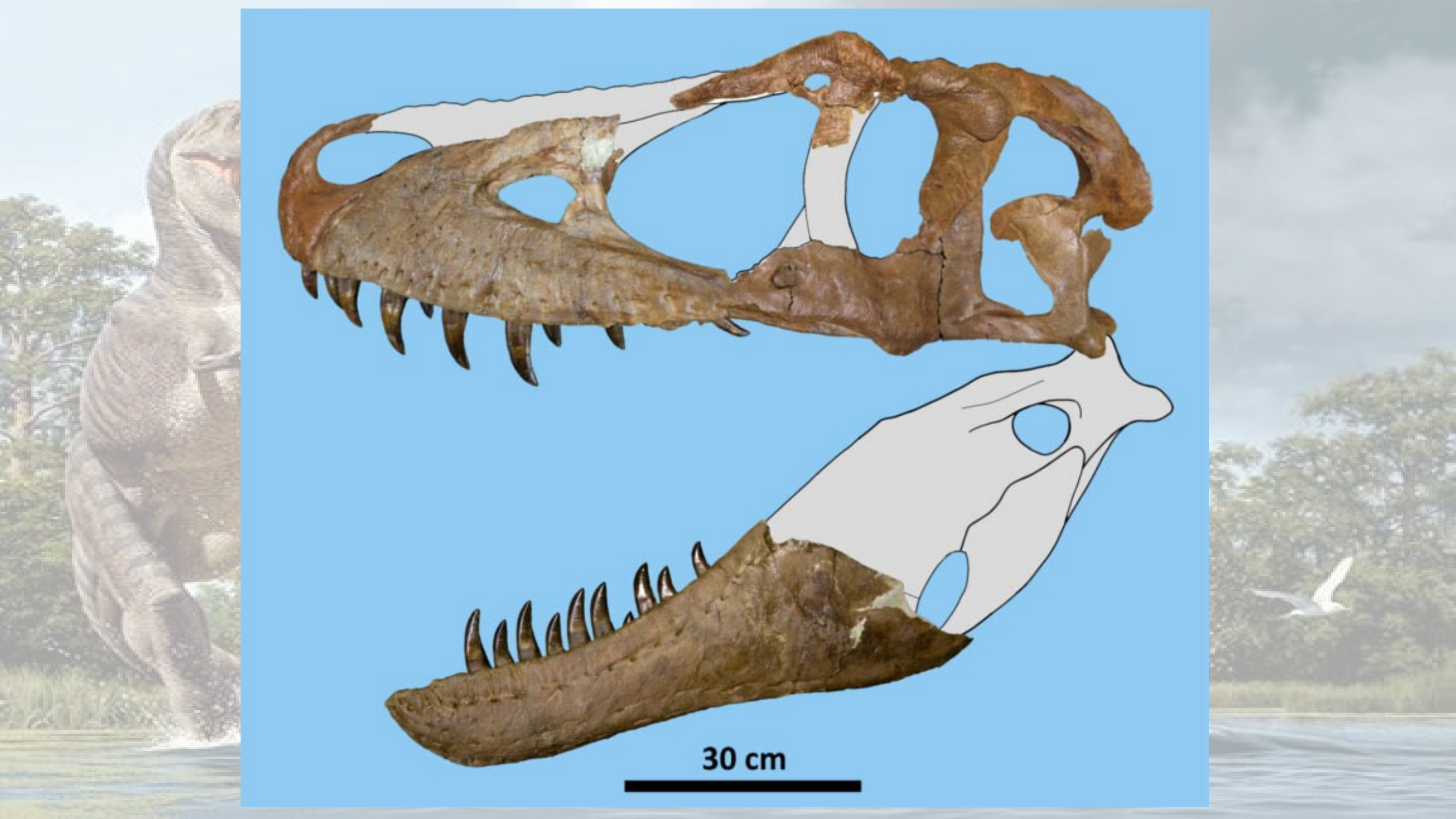




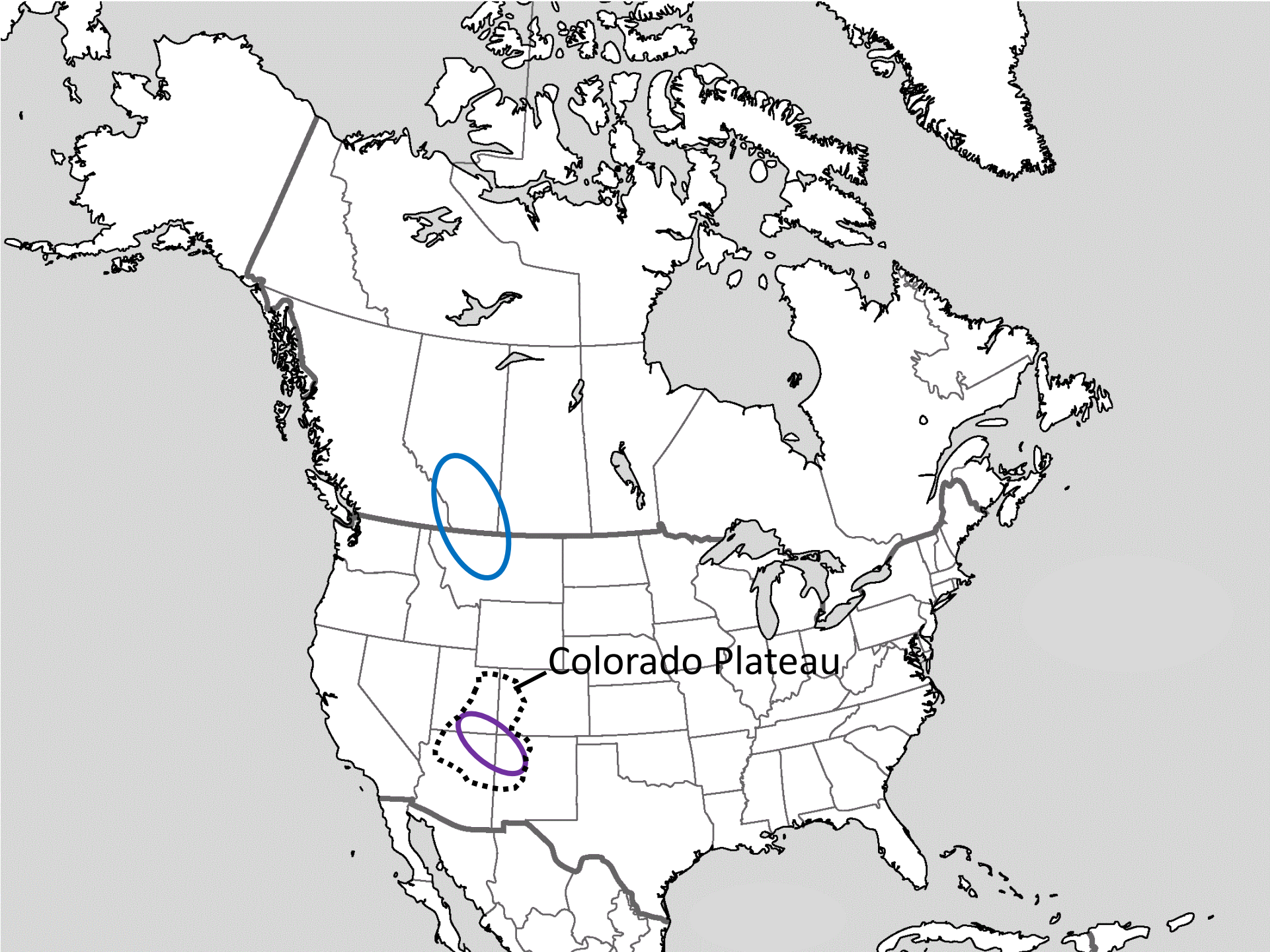








30 cm



Colorado Plateau



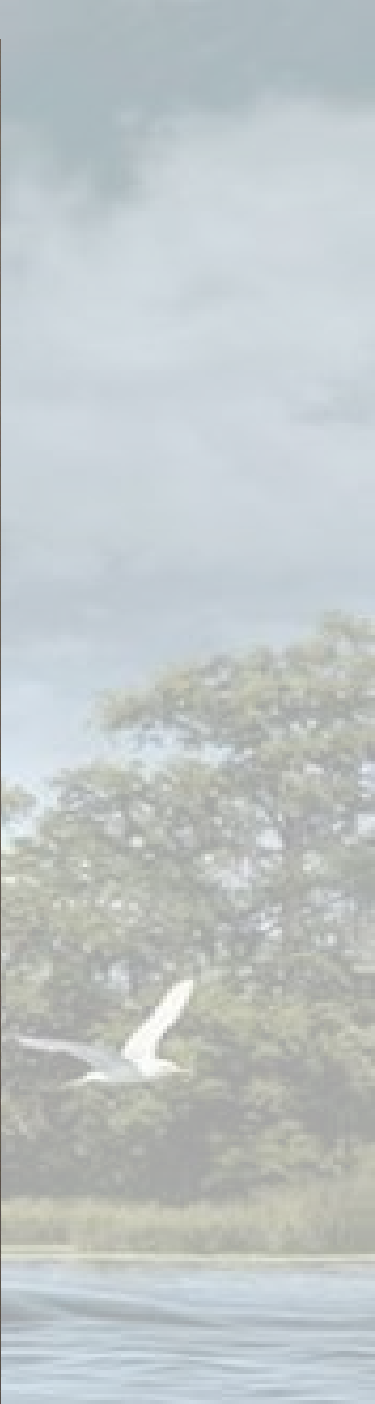
Bistahieversor sealeyi
NMMNH P-37469 (holotype)
skull and lower jaw



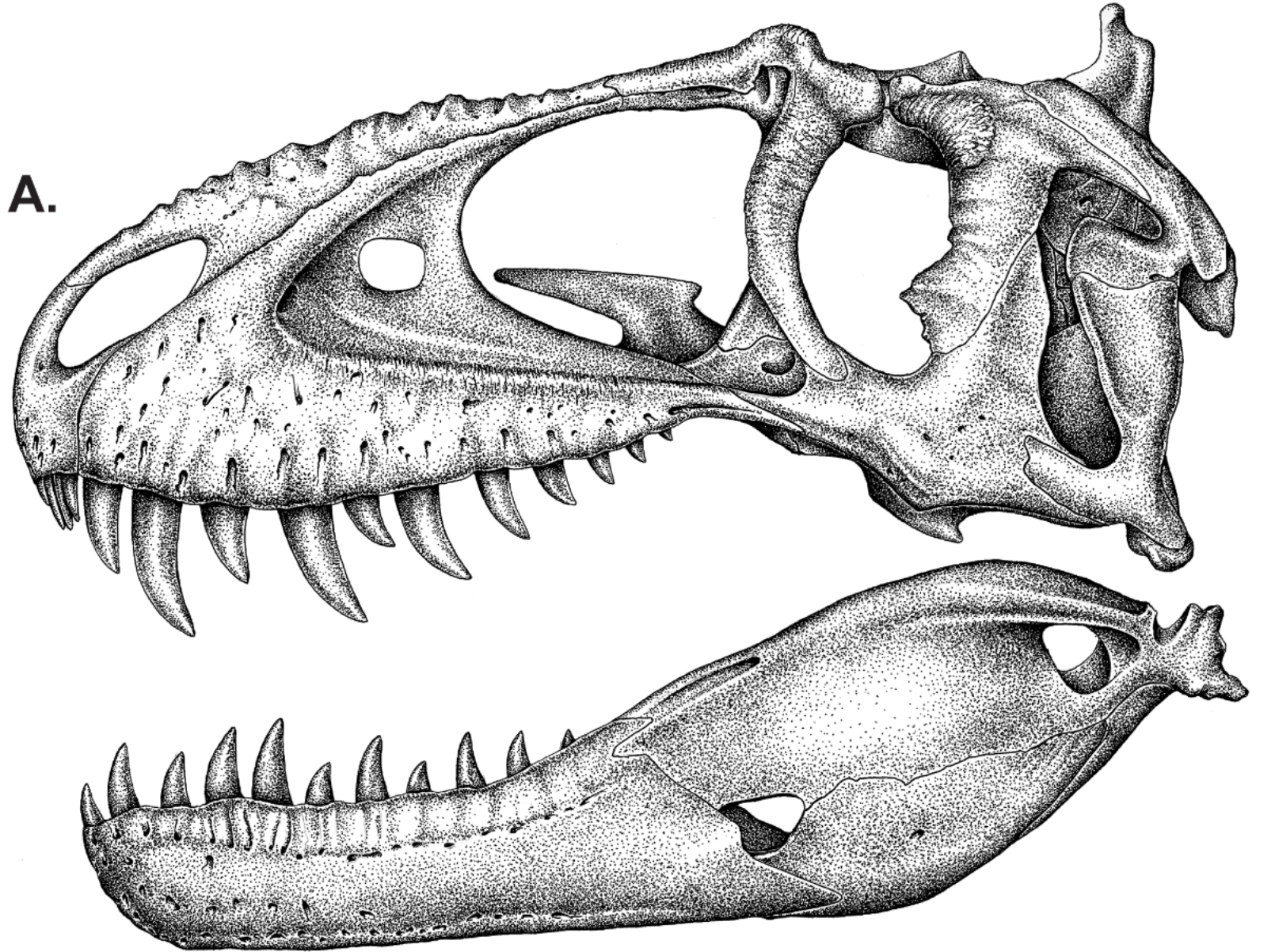
Jurassic Wash Member, Kirtland Formation
late Cretaceous (about 74 million years ago)
in Juan County, New Mexico

Bistahieversor sealeyi (bis-tah-hee-ee-VER-sor
ee-eye) is a tyrannosaur that lived about two
years before its larger relative, *Tyrannosaurus*
(ran-o-SORE-us rex). Tyrannosaurs were
predators of the Late Cretaceous of North
and Asia. This specimen was recently
using high-resolution computerized
CT with soft X-rays and neutrons at



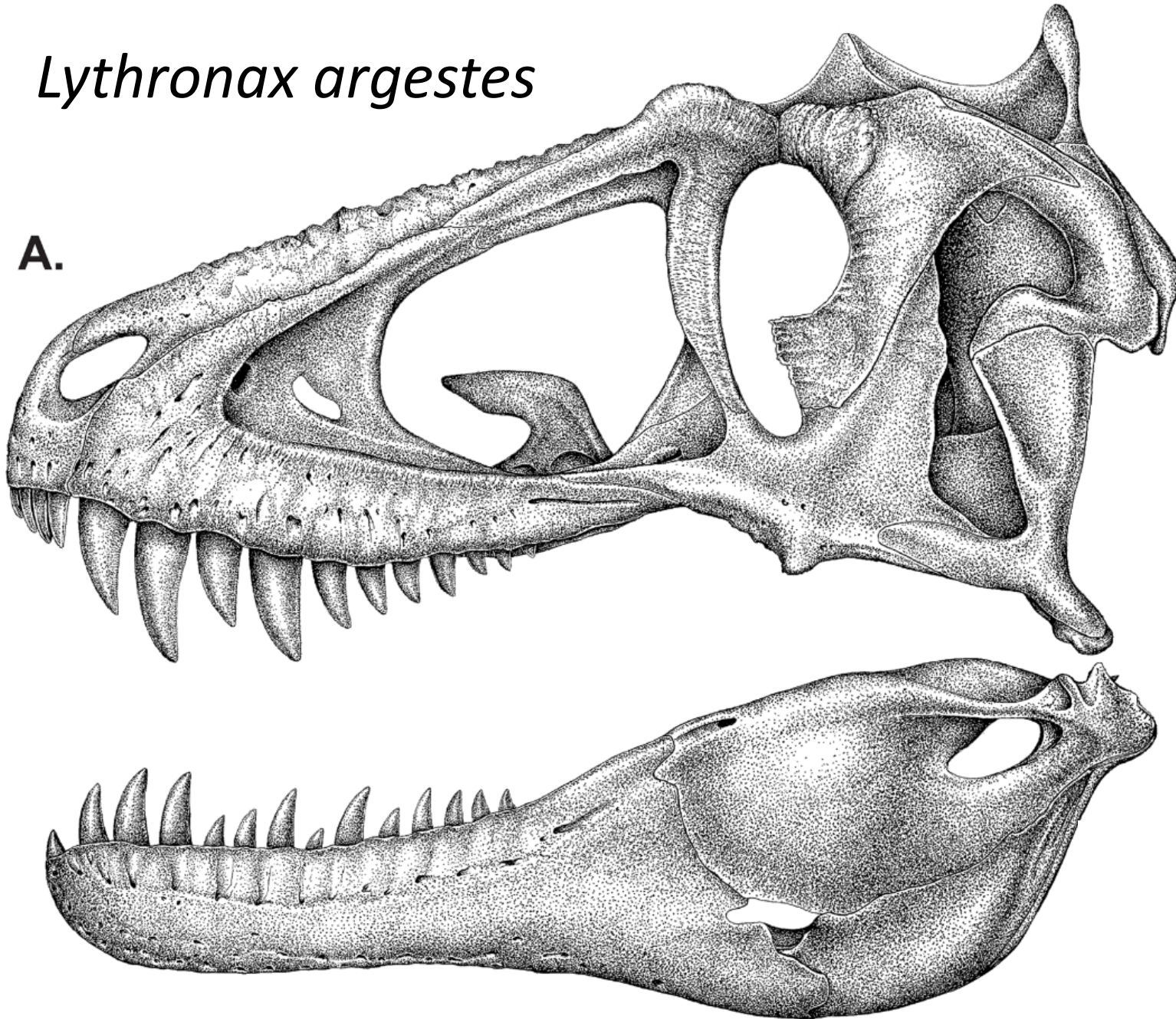


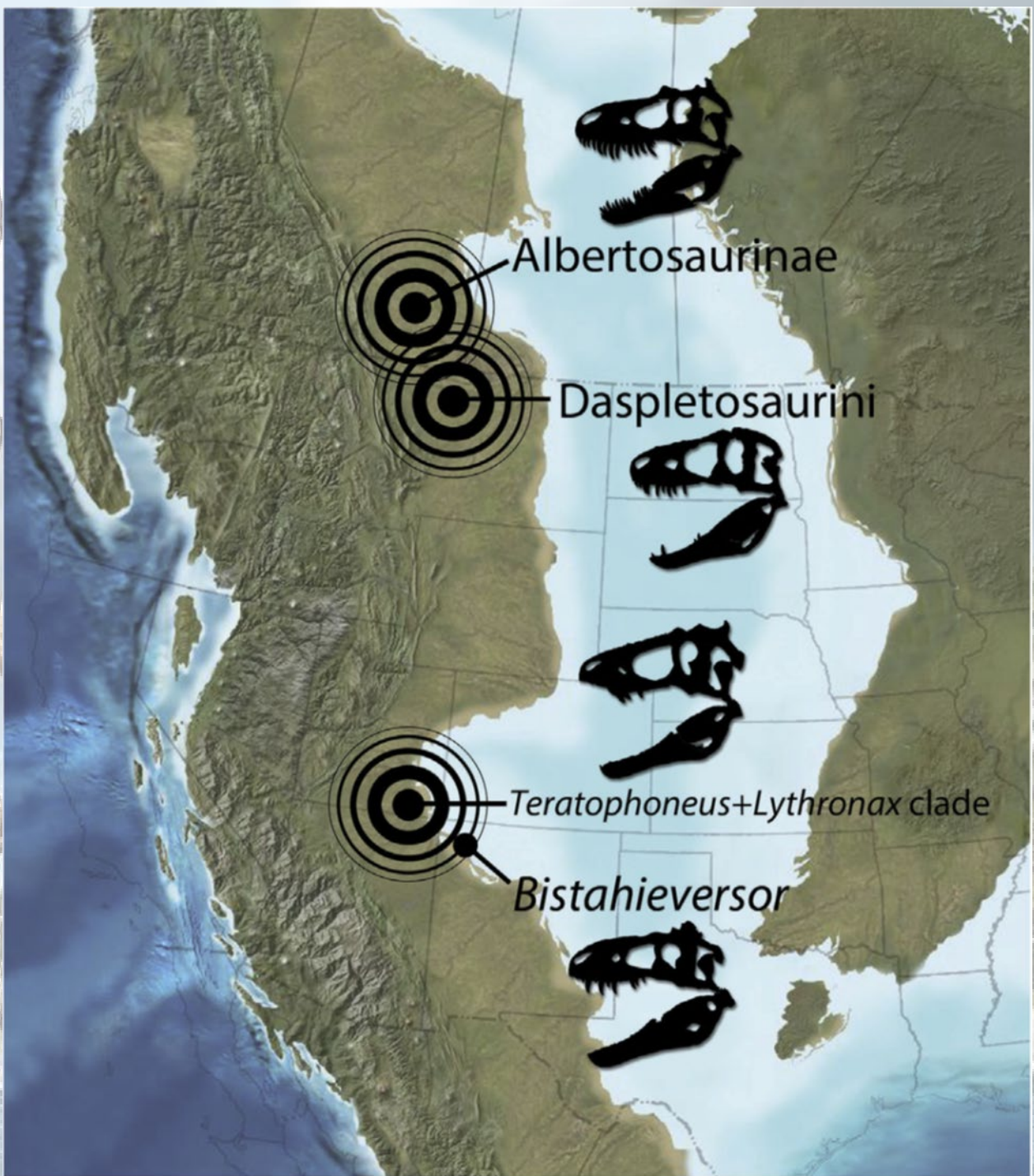
Teratophoneus curriei



Lythronax argestes

A.







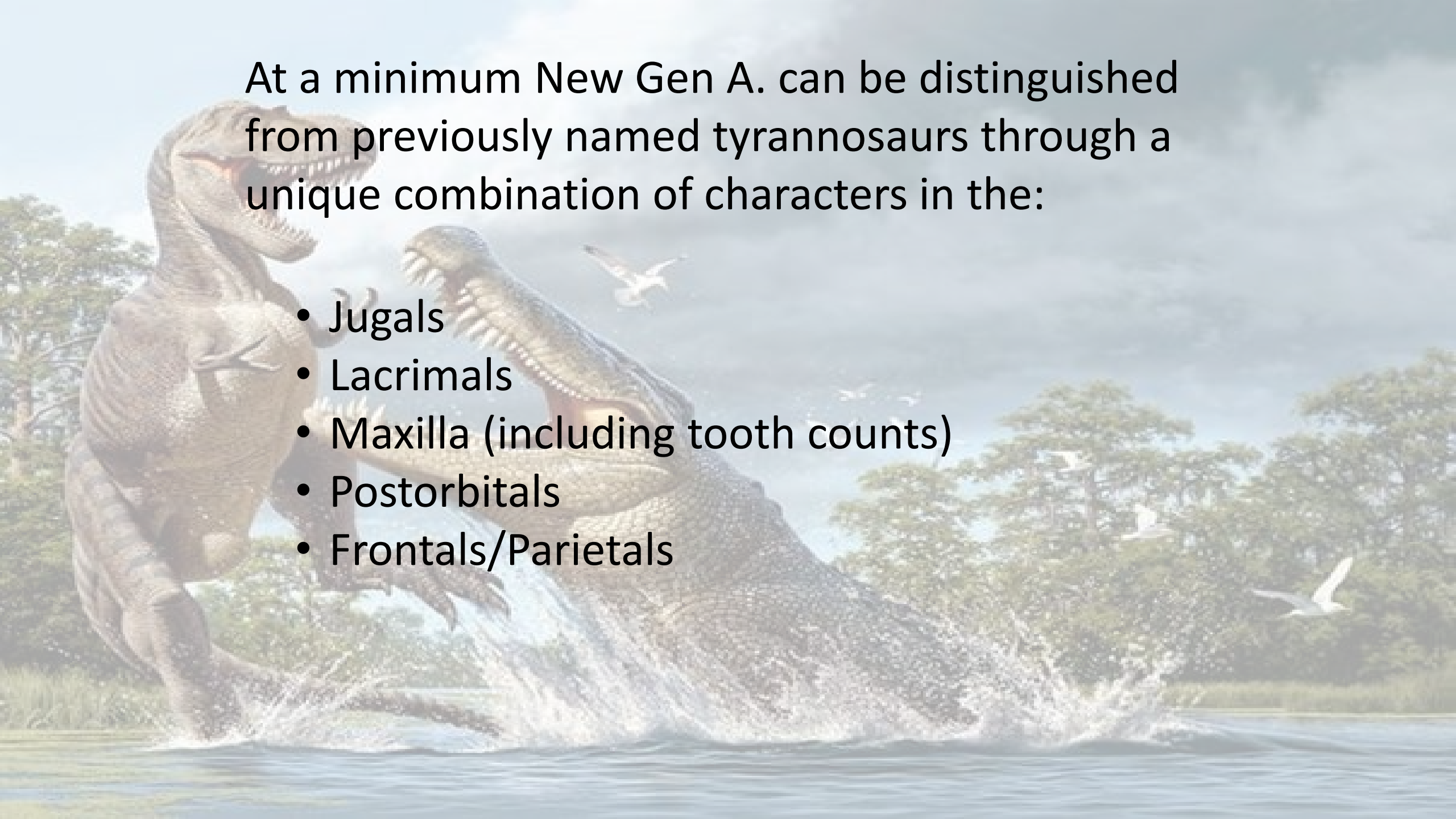
Tyrannosaur
Bone Layer





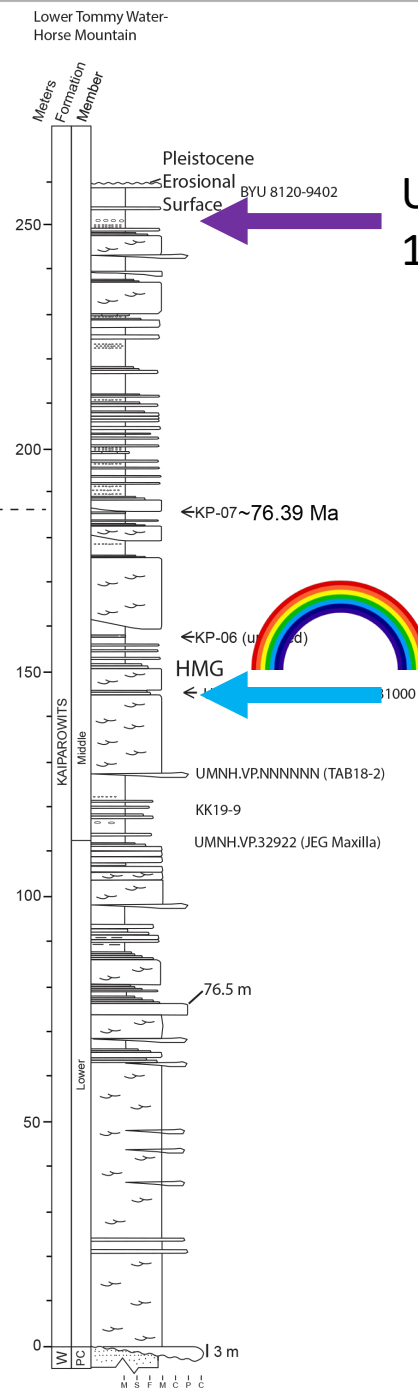
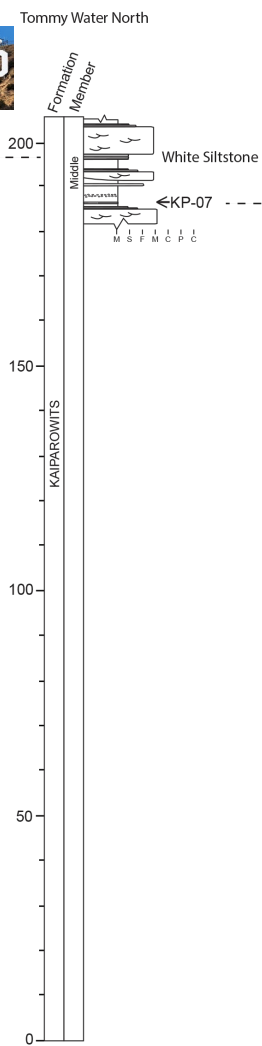
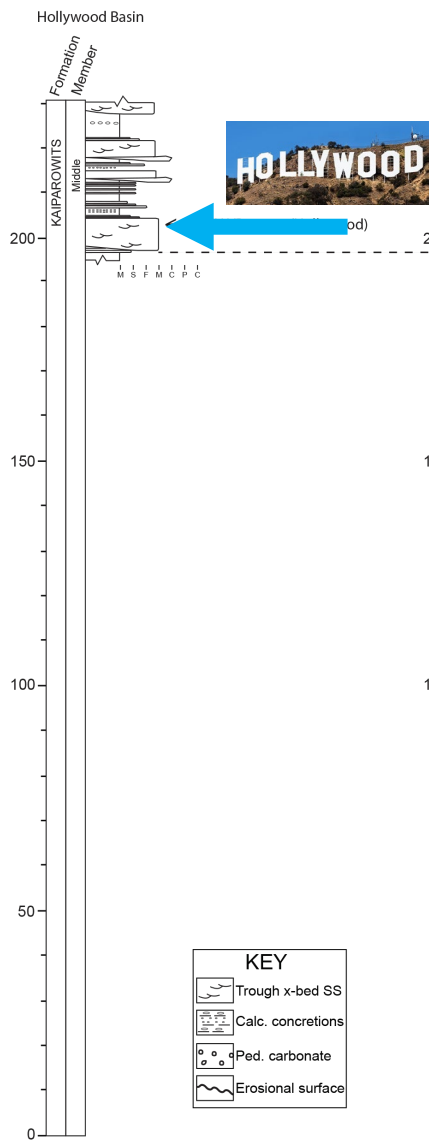




A large Tyrannosaurus Rex is on the left, standing on its hind legs and roaring with its mouth open. A Spinosaurus is on the right, partially submerged in water, with its head and front limbs visible. The background features a prehistoric landscape with trees and a cloudy sky. Several white birds are flying in the sky.

At a minimum New Gen A. can be distinguished from previously named tyrannosaurs through a unique combination of characters in the:

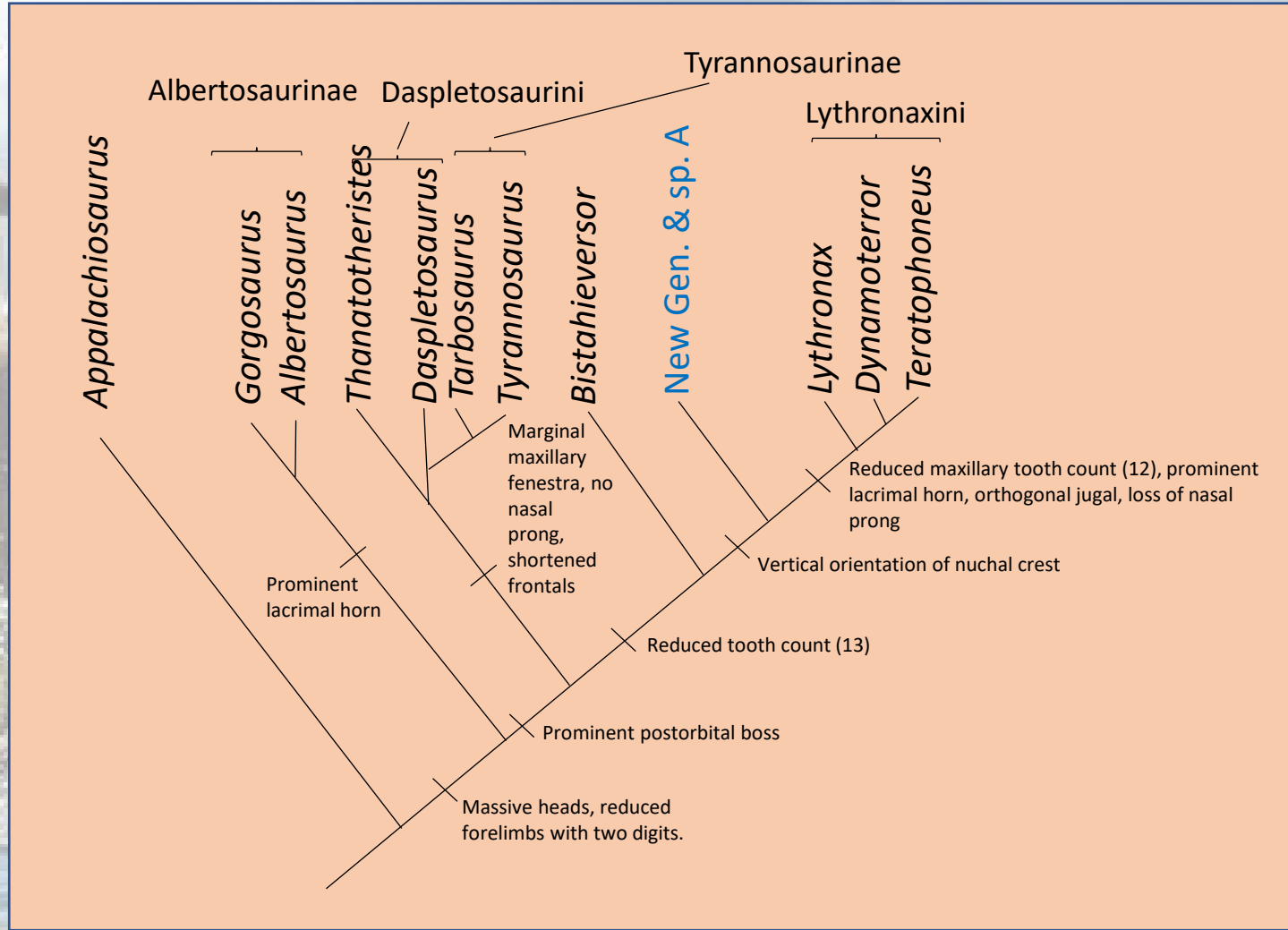
- Jugals
- Lacrimals
- Maxilla (including tooth counts)
- Postorbitals
- Frontals/Parietals



UMNH VP
16690

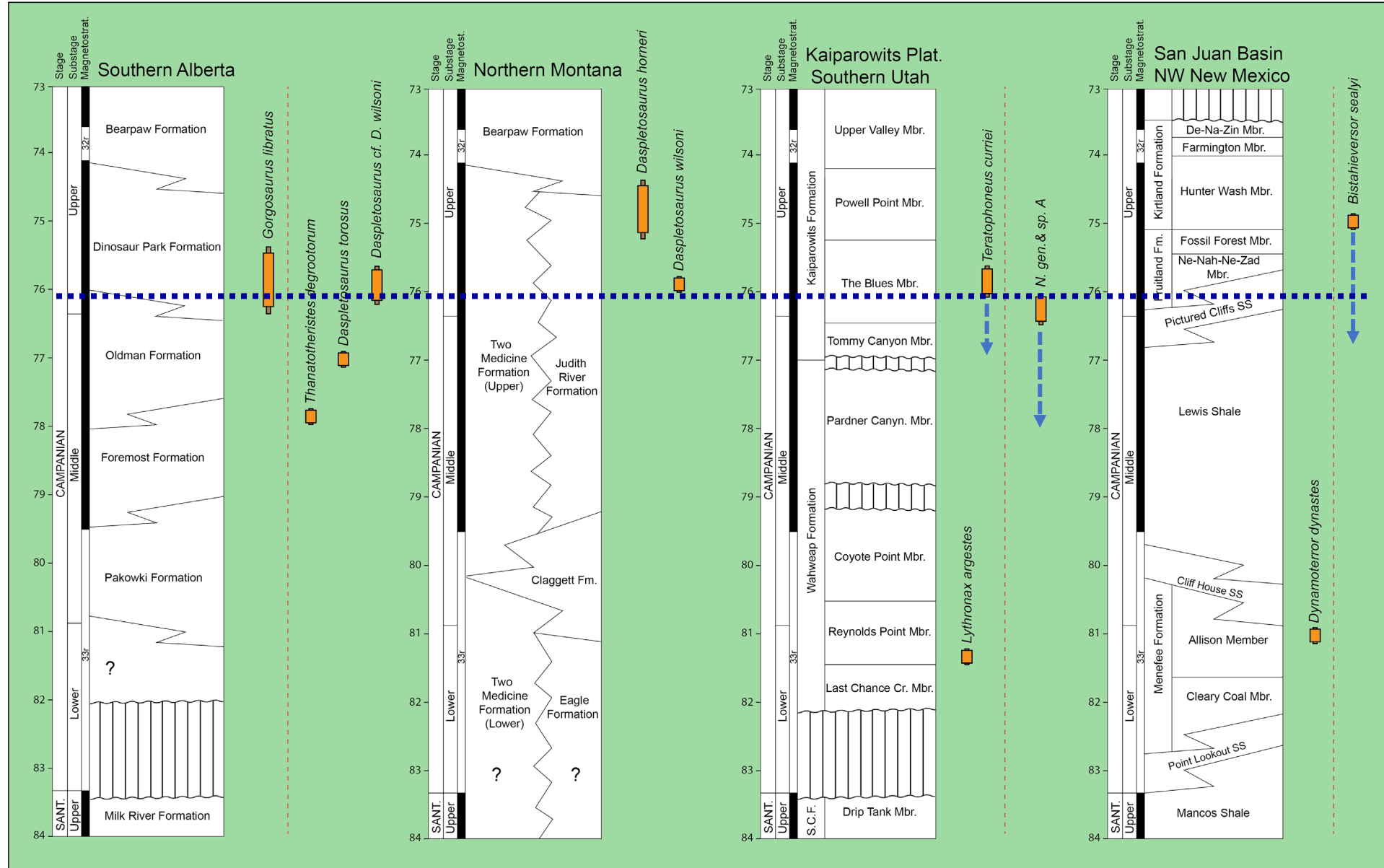
I think

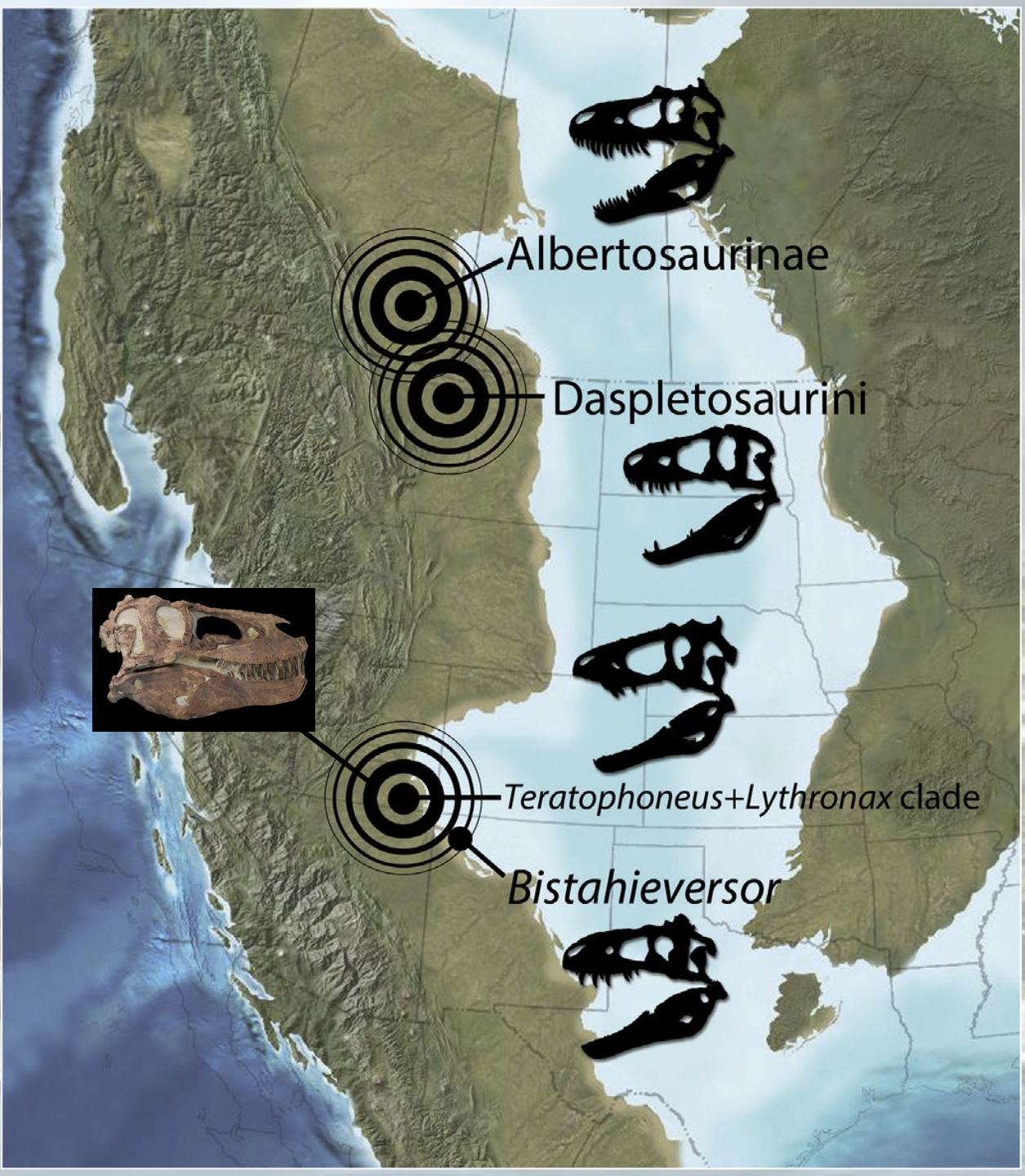
936

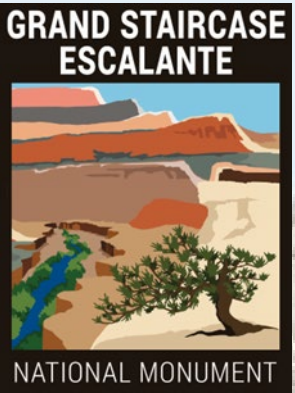


“NORTHERN” ASSEMBLAGE

“SOUTHERN” ASSEMBLAGE







COLORADO STATE
UNIVERSITY

ACKNOWLEDGEMENTS:

- Paria River District BLM
- GSENM Paleo Volunteer Crew
- UFOP Volunteers
- Tylor Birthisel: collection and prep of Hollywood.
- Tom Williamson for access to *Bistahieversor* holotype at New Mexico Museum of Natural History.
- Dave and Janet Gillette for access to the *Bistahieversor* paratype at Museum of Northern Arizona



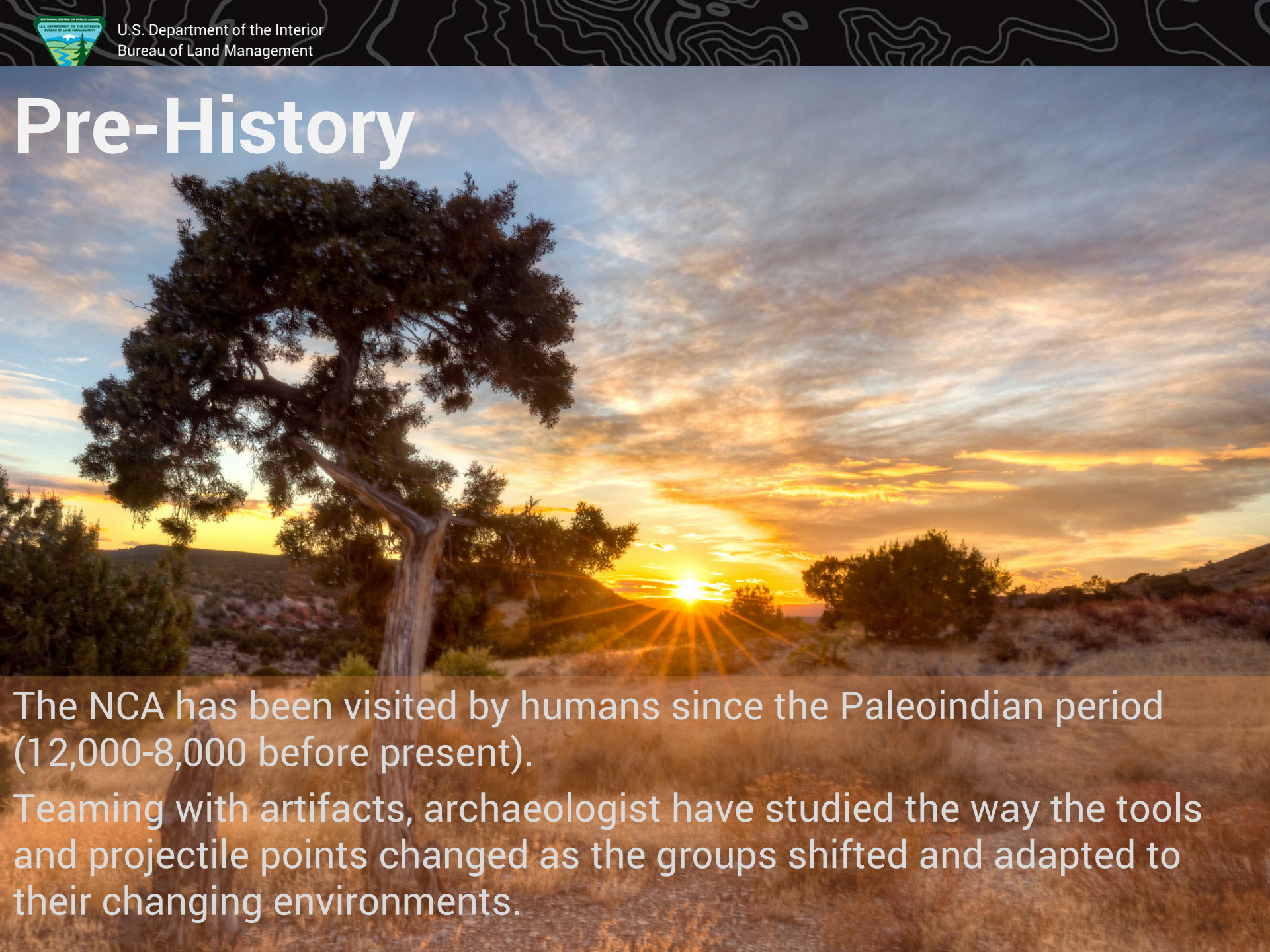
U.S. Department of the Interior
Bureau of Land Management

John Wesley Powell National Conservation Area





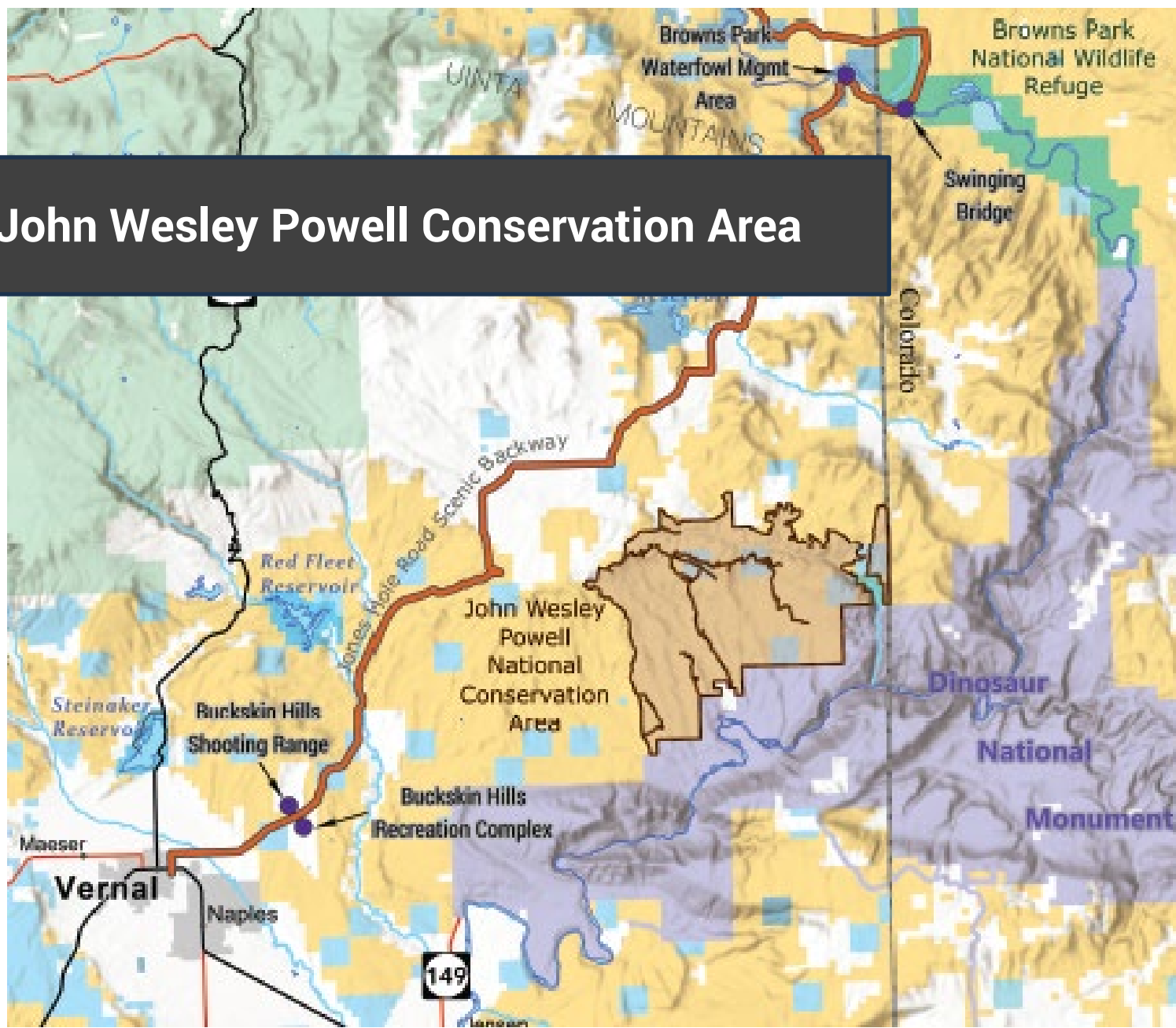
Pre-History

A large, gnarled tree stands in the foreground on the left, its branches reaching out. The background shows a desert landscape with rolling hills and sparse vegetation. The sun is low on the horizon, creating a bright orange glow and long rays of light that illuminate the sky and the ground. The sky is filled with soft, wispy clouds, and the overall atmosphere is peaceful and serene.

The NCA has been visited by humans since the Paleoindian period (12,000-8,000 before present).
Teaming with artifacts, archaeologist have studied the way the tools and projectile points changed as the groups shifted and adapted to their changing environments.



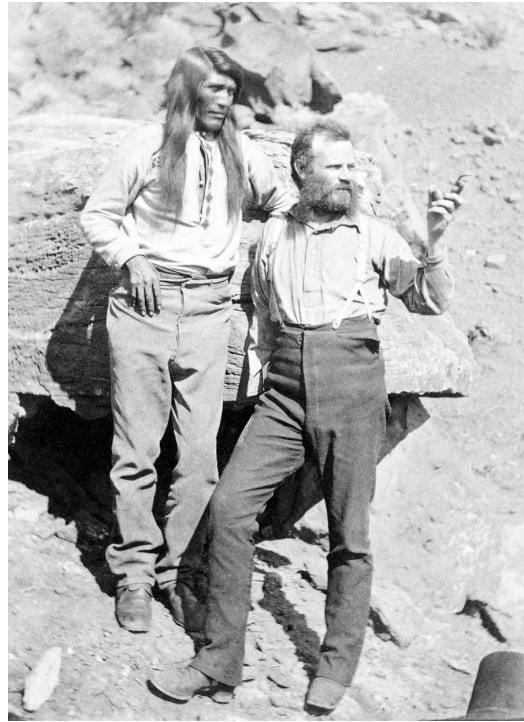
Map of John Wesley Powell Conservation Area





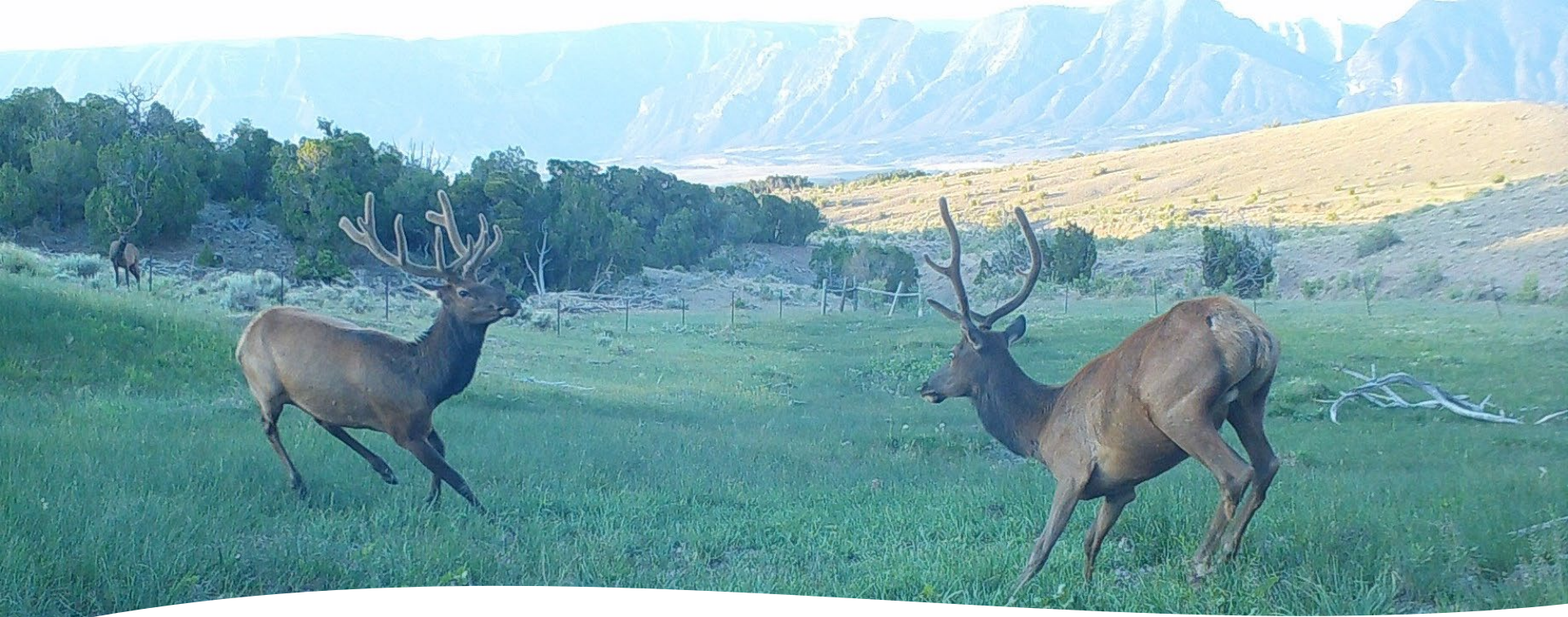
"We have an unknown distance yet to run, an unknown river to explore. What falls there are, we know not; what rocks beset the channel, we know not; what walls ride over the river, we know not. Ah, well! we may conjecture many things."

— John Wesley Powell



- 1869 John Wesley Powell set off from Green River, in the Wyoming Territory into the great unknown. The current carrying them swiftly south. His focus was to fill in the vast blank space that overshadowed the map of the American West. His expedition proved that this gorgeous area was not an empty wasteland but a jewel teeming with life, history, and discoveries.





**John
D. Dingell, Jr.
Conservation,
Management,
and
Recreation Act**

Created the 29,868 Acre National Conservation Area in order to conserve, protect, and enhance natural, scientific, and recreational resources.

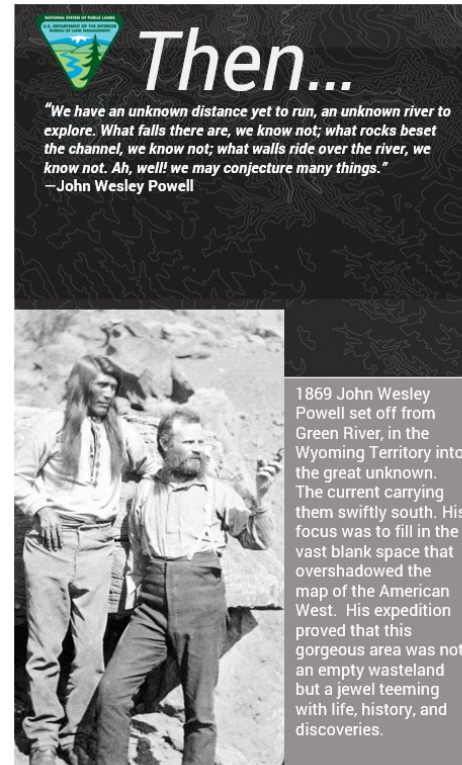
The National Conservation Area contains
17 Special Status Species

Current uses: Sight seeing, horse back riding and hiking activities, and hunting.



Milestones

- Started Analysis of the Management Situation
- Scoping report drafted, summarizing public comments received that will lead to alternatives within an Environmental Assessment



Milestones

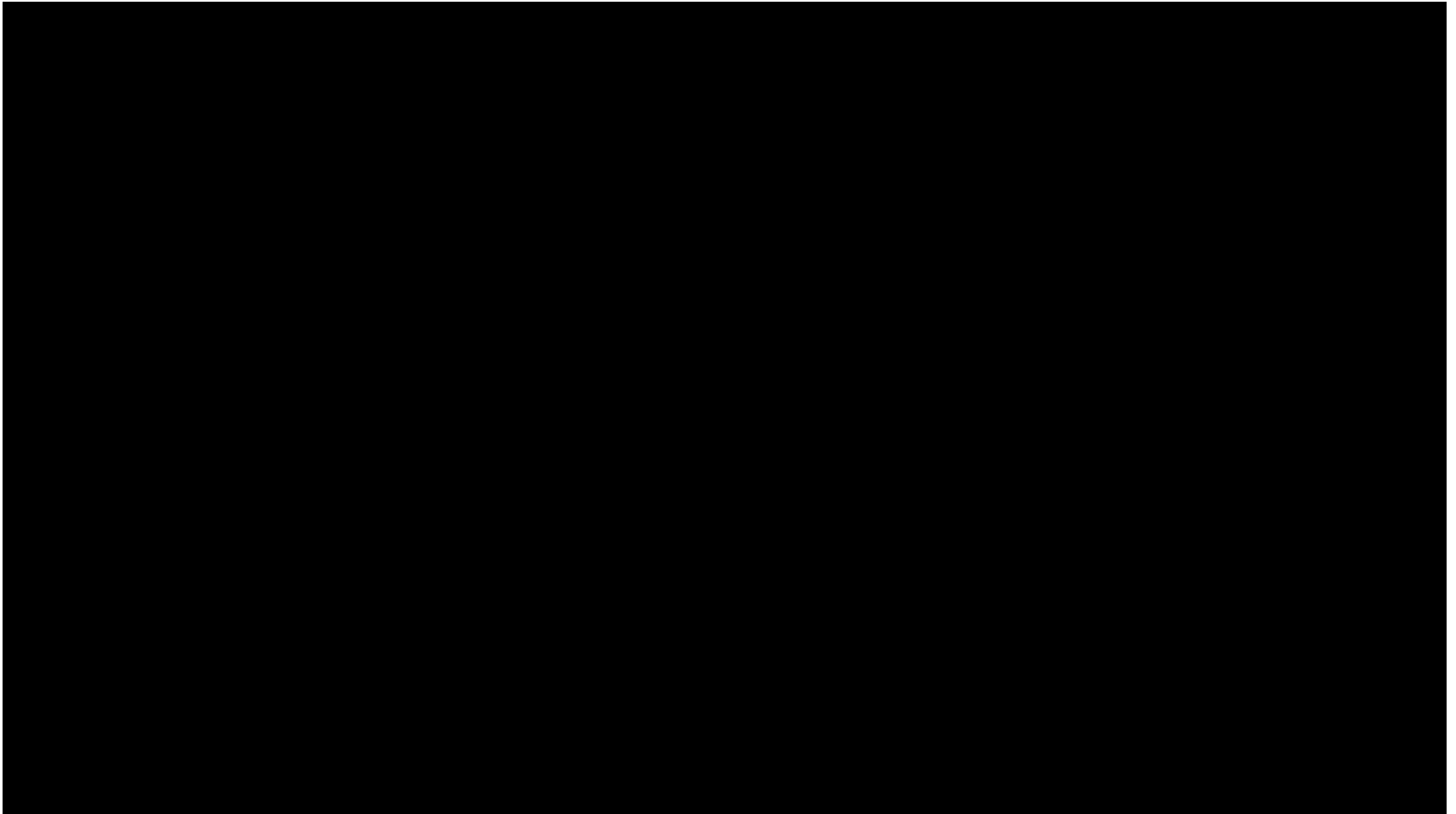
- Ethnographic study was completed.
- Botany inventory completed
- A visitor study was conducted and data is now being compiled
- Interpretive plan completed including a short film, interpretive signs, and informational banners.





U.S. Department of the Interior
Bureau of Land Management

Short Film



A hiker with a backpack stands on the peak of a large, light-colored rock formation. The hiker is silhouetted against a bright blue sky with scattered white clouds. In the background, a range of mountains is visible, some with patches of snow. The foreground consists of rocky terrain with sparse, dry vegetation.

Questions?