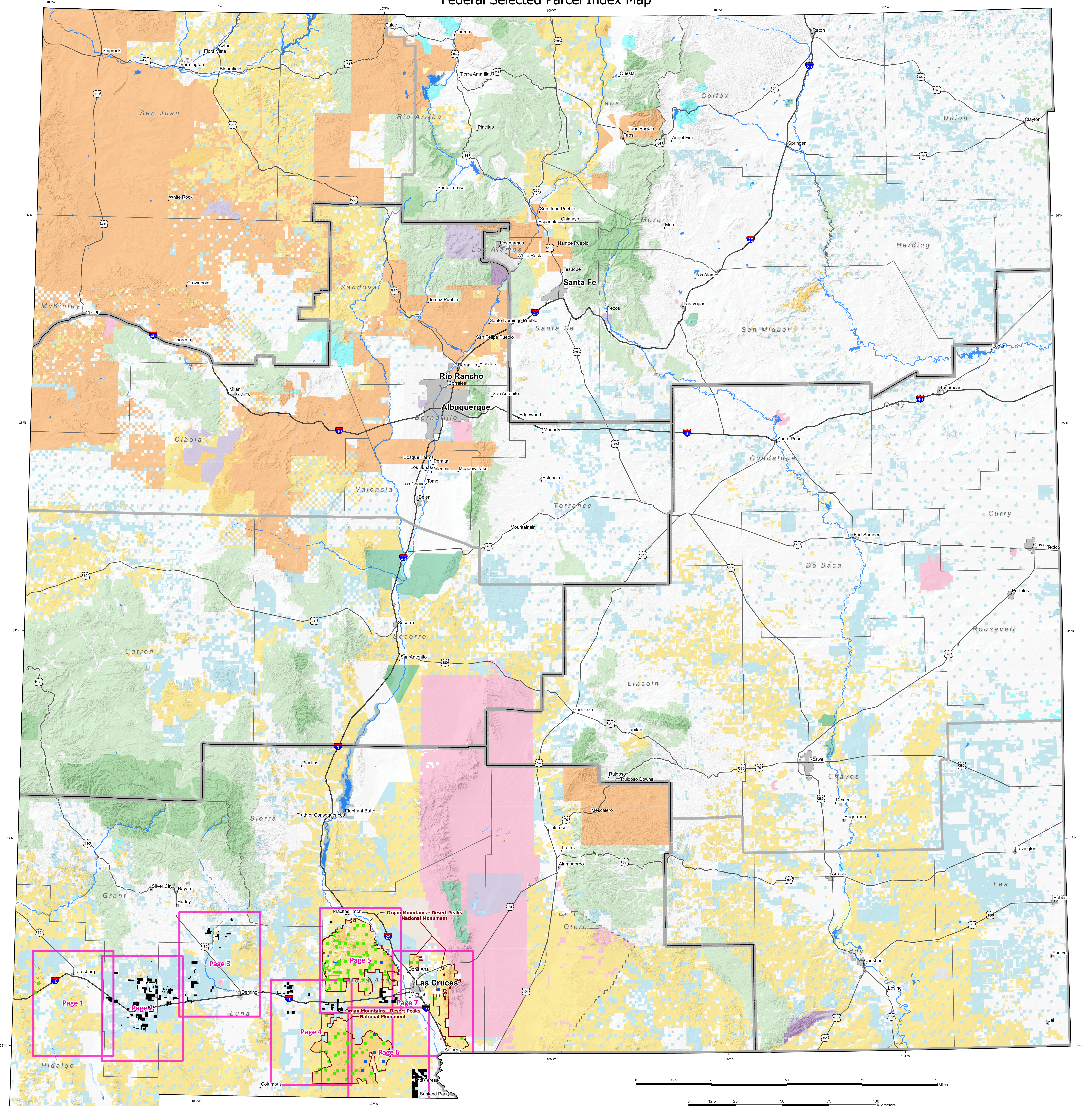
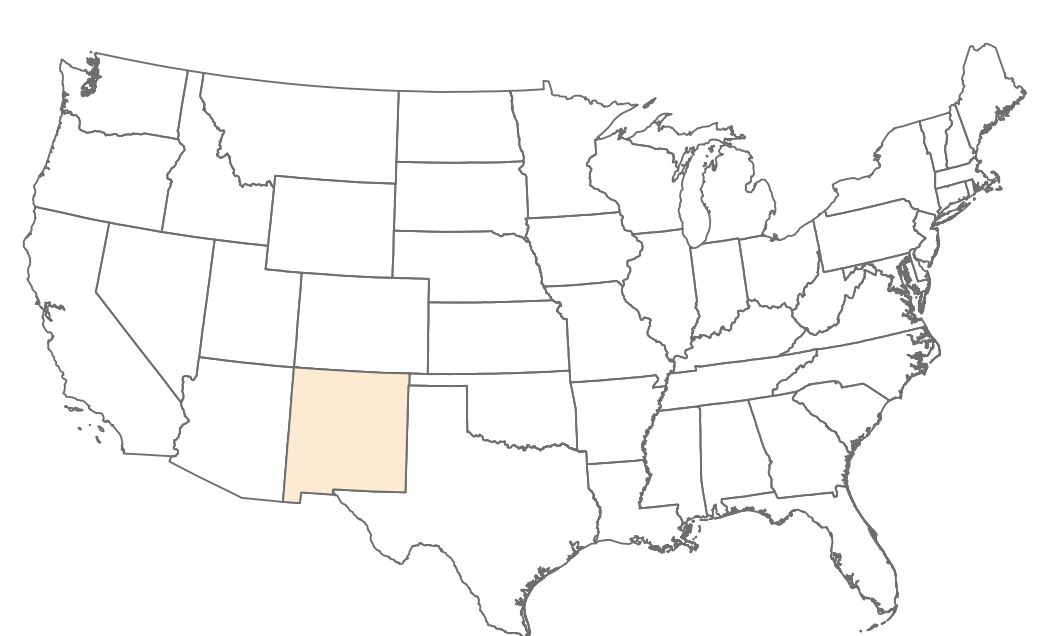


# Organ Mountain/Desert Peaks National Monument Proposed State Land Exchange Selected / Offered Parcels Federal Selected Parcel Index Map



- |  |   |  |  |  |   |
|--|---|--|--|--|---|
| <ul style="list-style-type: none"> <li><span style="border: 1px solid black; display: inline-block; width: 10px; height: 10px; margin-right: 5px;"></span> Federal Selected Parcels - Index Map</li> <li><span style="background-color: black; display: inline-block; width: 10px; height: 10px; margin-right: 5px;"></span> Federal Lands - (Surface and Minerals)</li> <li><span style="background-color: green; display: inline-block; width: 10px; height: 10px; margin-right: 5px;"></span> Non-Federal New Mexico Trust Lands (Surface Only)</li> <li><span style="background-color: purple; display: inline-block; width: 10px; height: 10px; margin-right: 5px;"></span> Non-Federal New Mexico Trust Lands (Surface and Minerals)</li> <li><span style="background-color: blue; display: inline-block; width: 10px; height: 10px; margin-right: 5px;"></span> Non-Federal New Mexico Trust Lands (Minerals Only)</li> <li><span style="border: 1px solid black; display: inline-block; width: 10px; height: 10px; margin-right: 5px;"></span> Organ Mountains - Desert Peaks National Monument</li> </ul> | <ul style="list-style-type: none"> <li><span style="background-color: yellow; display: inline-block; width: 10px; height: 10px; margin-right: 5px;"></span> Bureau of Land Management</li> <li><span style="background-color: lightgreen; display: inline-block; width: 10px; height: 10px; margin-right: 5px;"></span> Bureau of Reclamation</li> <li><span style="background-color: lightblue; display: inline-block; width: 10px; height: 10px; margin-right: 5px;"></span> Dept. of Agriculture</li> <li><span style="background-color: lightgrey; display: inline-block; width: 10px; height: 10px; margin-right: 5px;"></span> Dept. of Defense</li> <li><span style="background-color: lightyellow; display: inline-block; width: 10px; height: 10px; margin-right: 5px;"></span> Dept. of Energy</li> <li><span style="background-color: lightcyan; display: inline-block; width: 10px; height: 10px; margin-right: 5px;"></span> Fish &amp; Wildlife Service</li> <li><span style="background-color: lightgreen; display: inline-block; width: 10px; height: 10px; margin-right: 5px;"></span> Forest Service</li> </ul> | <ul style="list-style-type: none"> <li><span style="background-color: lightblue; display: inline-block; width: 10px; height: 10px; margin-right: 5px;"></span> National Park Service</li> <li><span style="background-color: lightgrey; display: inline-block; width: 10px; height: 10px; margin-right: 5px;"></span> Other Federal Agency</li> <li><span style="background-color: lightgrey; display: inline-block; width: 10px; height: 10px; margin-right: 5px;"></span> Private</li> <li><span style="background-color: lightgreen; display: inline-block; width: 10px; height: 10px; margin-right: 5px;"></span> State</li> <li><span style="background-color: lightblue; display: inline-block; width: 10px; height: 10px; margin-right: 5px;"></span> State Game &amp; Fish</li> <li><span style="background-color: lightgreen; display: inline-block; width: 10px; height: 10px; margin-right: 5px;"></span> State Park</li> <li><span style="background-color: lightgrey; display: inline-block; width: 10px; height: 10px; margin-right: 5px;"></span> Tribal</li> </ul> | <ul style="list-style-type: none"> <li><span style="background-color: yellow; display: inline-block; width: 10px; height: 10px; margin-right: 5px;"></span> Bureau of Land Management Wilderness</li> <li><span style="background-color: green; display: inline-block; width: 10px; height: 10px; margin-right: 5px;"></span> Forest Service Wilderness</li> <li><span style="background-color: green; display: inline-block; width: 10px; height: 10px; margin-right: 5px;"></span> Fish &amp; Wildlife Agency Wilderness</li> <li><span style="background-color: purple; display: inline-block; width: 10px; height: 10px; margin-right: 5px;"></span> National Park Service Wilderness</li> </ul> | <ul style="list-style-type: none"> <li><span style="border: 1px solid black; display: inline-block; width: 10px; height: 10px; margin-right: 5px;"></span> BLM Field Office Boundary</li> <li><span style="border: 1px solid black; display: inline-block; width: 10px; height: 10px; margin-right: 5px;"></span> BLM District Office Boundary</li> <li><span style="border: 1px solid black; display: inline-block; width: 10px; height: 10px; margin-right: 5px;"></span> County Boundary</li> <li><span style="border: 1px solid black; display: inline-block; width: 10px; height: 10px; margin-right: 5px;"></span> Interstate Highway</li> <li><span style="border: 1px solid black; display: inline-block; width: 10px; height: 10px; margin-right: 5px;"></span> Federal Highway</li> <li><span style="background-color: grey; display: inline-block; width: 10px; height: 10px; margin-right: 5px;"></span> Urban Area</li> <li><span style="display: inline-block; width: 10px; height: 10px; border: 1px solid black; margin-right: 5px;"></span> Town/Village</li> </ul> | <ul style="list-style-type: none"> <li><span style="border-bottom: 1px solid blue; display: inline-block; width: 10px; margin-right: 5px;"></span> Stream/River - Perennial</li> <li><span style="border-bottom: 1px dashed blue; display: inline-block; width: 10px; margin-right: 5px;"></span> Stream/River - Intermittent</li> <li><span style="background-color: blue; display: inline-block; width: 10px; height: 10px; margin-right: 5px;"></span> Lake/Pond/Reservoir</li> <li><span style="background-color: lightblue; display: inline-block; width: 10px; height: 10px; margin-right: 5px;"></span> Lake/Pond Intermittent</li> <li><span style="background-color: yellow; display: inline-block; width: 10px; height: 10px; margin-right: 5px;"></span> Plain</li> <li><span style="background-color: lightblue; display: inline-block; width: 10px; height: 10px; margin-right: 5px;"></span> Swamp/Marsh</li> </ul> |
|--|---|--|--|--|---|



Albers Equal Area Conic Projection  
 Standard Parallels: 37°N and 39°N  
 Latitude of Origin: 34.0°N  
 Central Meridian: 106°W  
 North American Datum 1983  
 No warranty is made by the Bureau of Land Management as to the accuracy, reliability, or completeness of these data for individual use or aggregate use with other data, or for purposes not intended by BLM. Spatial information may not meet National Map Accuracy Standards. This information may be updated without notification.