



U.S. Department of the Interior
Bureau of Land Management

BLM Colorado – Rocky Mountain RAC

Your Public Lands – 245 Million Acres of Possibilities





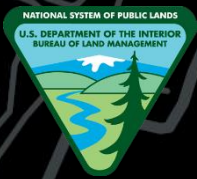
Agenda for Thursday, March 30

- | | |
|------------|--|
| 9:00 a.m. | Meeting begins (hybrid in-person and virtual participation) |
| | Housekeeping and Introductions |
| | Opening remarks, District Manager, Cathy Cook |
| 9:30 a.m. | District Updates |
| 10:00 a.m. | Royal Gorge Field Manager Update, Keith Berger |
| 10:15 a.m. | BREAK |
| 10:30 a.m. | San Luis Valley Field Manager Update, Dario Archuleta |
| 11:00 a.m. | BREAK |
| 11:15 a.m. | Identify Agenda Topics for Summer RAC Meeting, Cathy Cook |
| 12:00 p.m. | LUNCH |
| 1:15 p.m. | Elect Rocky Mountain RAC Chairperson (if quorum present) |
| 1:30 p.m. | Public Comments |
| 2:00 p.m. | Closing remarks and Adjourn |



Rocky Mountain District RAC Overview

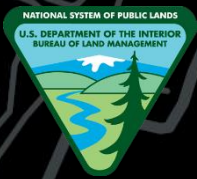
Category	Name	Business	Interest	Term Exp.
1	Curtis Howell		Outdoor Educator	April 2025
1	Vacant			
1	Vacant			
1	Vacant			
1	Vacant			
Category				
2	John Sztukowski	Conservation Director, Wild Connections	Environmental organizations	April 2025
2	Irene Shonle	CSU Extension El Paso County Horticulture Agent	Dispersed recreation	April 2025
2	Mick Daniel	San Luis Valley Great Outdoors	Dispersed recreation	April 2025
2	Loretta Mitson		Archaeological and Historical interests	April 2025
2	Vacant			
Category				
3	Travis Black	Colorado Parks and Wildlife	State Agency Representative	April 2025
3	Arthur Koepsell	COGCC	State Agency Representative	Feb 2023
3	Kent Wood	Retired Astrophysicist and Geophysicist	Public-at-Large	April 2025
3	Ray Douglas	Park County Commissioner	Elected Official	Jan 2024
3	Lawrence Pacheco		Public-at-Large	April 2025



Rocky Mountain District

- Manages 1.8 million surface acres and over 12 million subsurface acres.
- Includes the Royal Gorge Field Office, San Luis Valley Field Office, Brown's Canyon National Monument and Rocky Mountain District Fire





BLM Colorado

- Big Game RMPA/EIS
- Gunnison Sage Grouse RMPA/EIS
- Solar PEIS





Big Game Planning

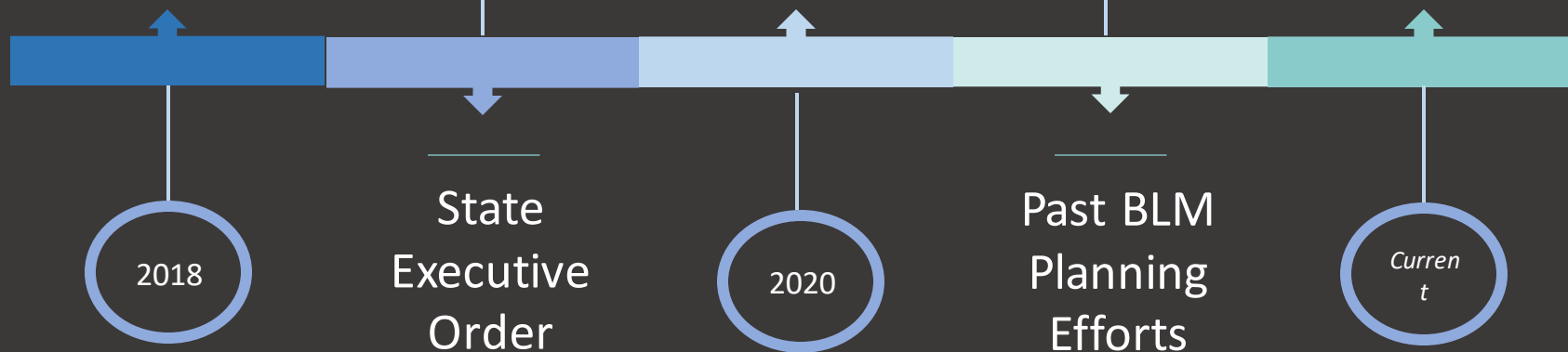


Colorado Oil
and Gas
Conservation
Commission
Rulemaking



Secretarial Order 3362

Data





Purpose and Need (preliminary)



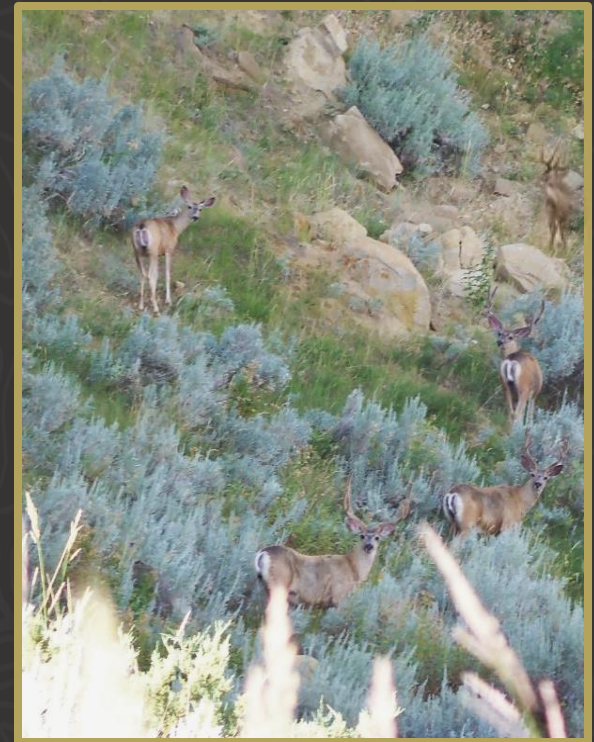
- Evaluate alternative management approaches for oil and gas to conserve important big game habitat
- Evaluate **consistency** of BLM's management for oil and gas and FLPMA mandate.
- Analyze, with the best available science, conditions and high-density activities.



Conservation



- Species
 - Elk, mule deer, pronghorn
- Important Habitat
 - Includes Colorado Parks and Wildlife's "High Priority Habitat"
- Density Limitations
- COGCC Rulemaking (Wildlife 1200 series)

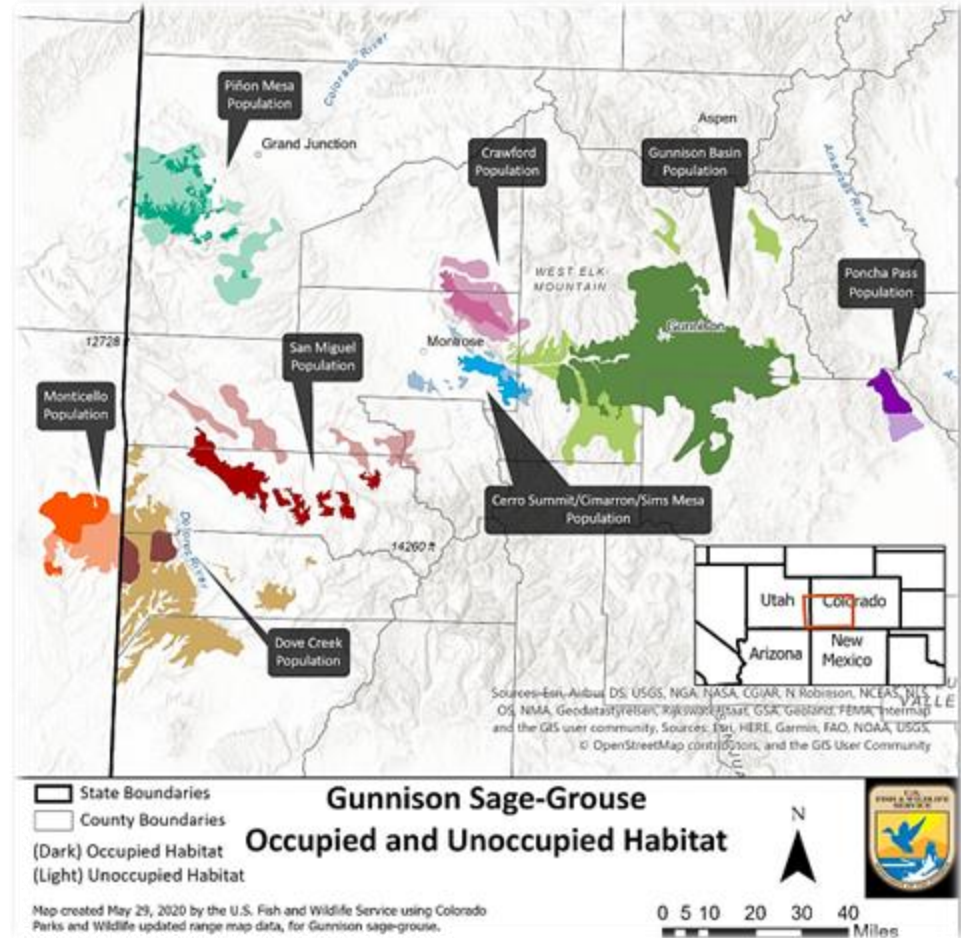




Gunnison Sage Grouse RMPA/EIS

Gunnison sage-grouse (*Centrocercus minimus*)

- Require expansive sagebrush for food and cover
 - Eat exclusively sagebrush during winter
- Current range limited to eight isolated populations in southwestern Colorado and southeastern Utah
- BLM manages about 40% of Gunnison sage-grouse habitat across ten Colorado and two Utah counties
- Gunnison Basin supports largest population
 - Approx. 85% of breeding birds
 - Approx. 65% of occupied habitat





Purpose

- Promote recovery of Gunnison sage-grouse (threatened species) by maintaining and enhancing habitat
- Ensure management actions on BLM lands and sub-surface mineral estate support conservation goals for Gunnison sage-grouse
- Develop BLM management practices considering current science and data, relevant Federal, State, and local decisions





Need

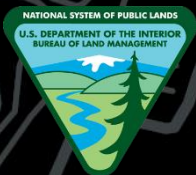
- Address the rangewide downward population trend of the Gunnison sage-grouse and issues related to land management that may affect habitat
- Fulfill the Endangered Species Act to conserve federally listed species and the ecosystems they depend on
- Respond to changed ecological and climate conditions affecting BLM-managed lands (including drought, invasive plants, habitat loss and fragmentation, impaired riparian areas, frequent wildland fires)





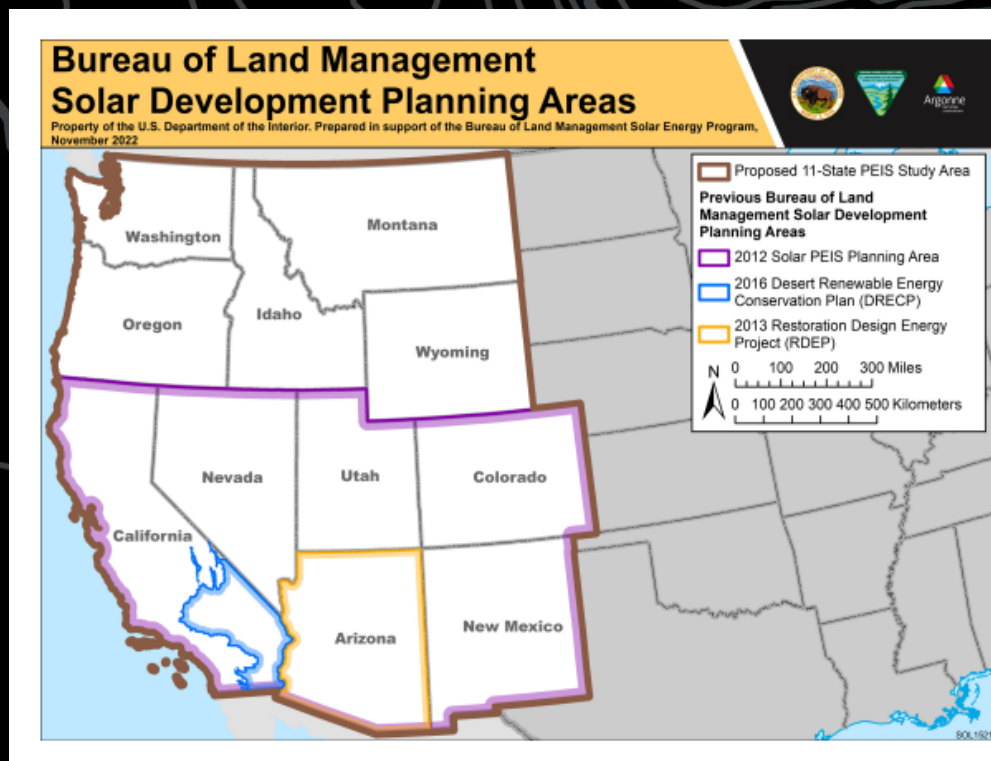
Preliminary Issues

-  What habitat objectives should the BLM prioritize given the diverse condition of public lands across the range of Gunnison sage-grouse, including the effects of climate change?
-  How should the BLM apply mitigation, including compensatory mitigation, to address impacts to Gunnison sage-grouse populations and their habitat?
-  How should the BLM prioritize and manage the leasing and development of renewable and non-renewable energy resources?
-  How should the BLM apply adaptive management strategies for livestock grazing during drought conditions and on grazing allotments not meeting standards for Gunnison sage-grouse habitat due to grazing activities?



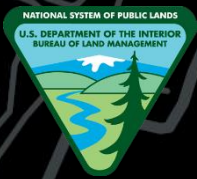
BLM Colorado

[2023 Solar Programmatic EIS Information Center \(anl.gov\)](https://anl.gov)





Lunch Break



Rocky Mountain District

- Topics for Summer Meeting currently scheduled for June 22, 2023
 - Penrose Commons Planning efforts
 - Focal Landscapes FY23 plan and outyear activity planning
 - Election of a Chair





U.S. Department of the Interior
Bureau of Land Management

Time for us to take Public Comments



Wrap Up

- **Public comments**
- **Bin items, and open discussion**
- **Adjourn**



U.S. Department of the Interior
Bureau of Land Management

Closing Remarks

Your Public Lands – 245 Million Acres of Possibilities

Q&A



Please drop your questions in the chat or raise your hand