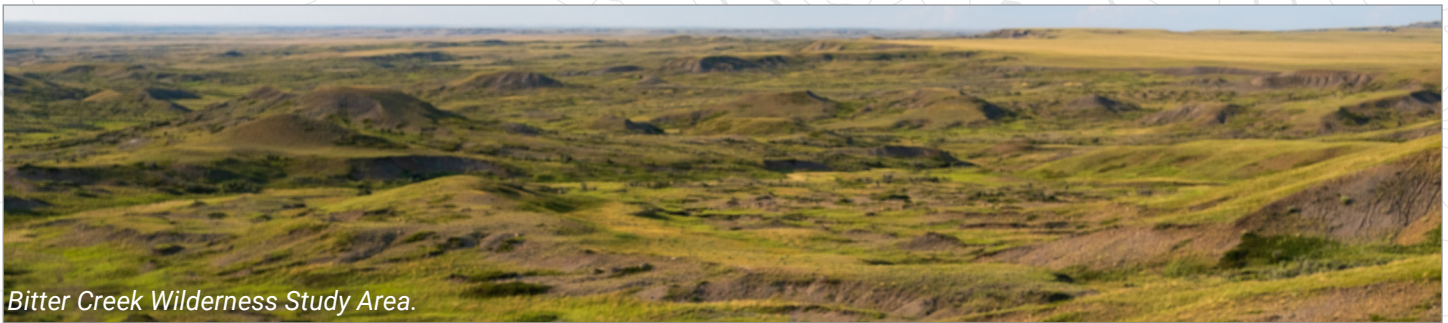




The Hi-Line Sagebrush Anchor, North Central Montana



Bitter Creek Wilderness Study Area.

The Bureau of Land Management is infusing \$161 million for ecosystem restoration and resilience on the nation's public lands, as part of the Biden-Harris Administration's Investing in America agenda. The proposed work will focus on 21 "Restoration Landscapes" across 11 western states, restoring public lands, strengthening communities and local economies, advancing climate resilience and furthering our commitment to Tribal collaboration and partnership.

Some of the largest intact grasslands left in North America support numerous at-risk grassland bird species, hold priority habitat for greater sage-grouse and provide critical winter and migration habitat for elk, deer and pronghorn. The short grass prairie of north central Montana is an extremely popular destination for hunting, fishing and bird watching. As drought continues, restoration investments will improve mesic and woody draw habitats; increase native plant diversity and remove encroaching conifers and human-made features that threaten sage-grouse survival.

These restoration investments will advance the Department's broader sage brush strategy, by building ecological resilience in core habitats, reducing the threat of wildland fire and advancing the Sagebrush Conservation Design.

Restoration Features



Create Climate Resilience



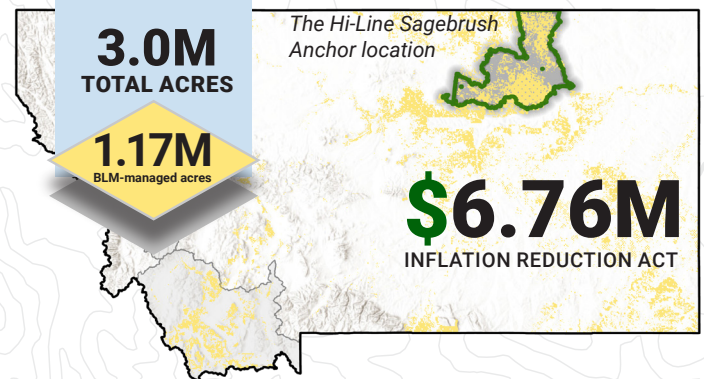
Protect native plants & remove invasive species



Restore Riparian/Wetland

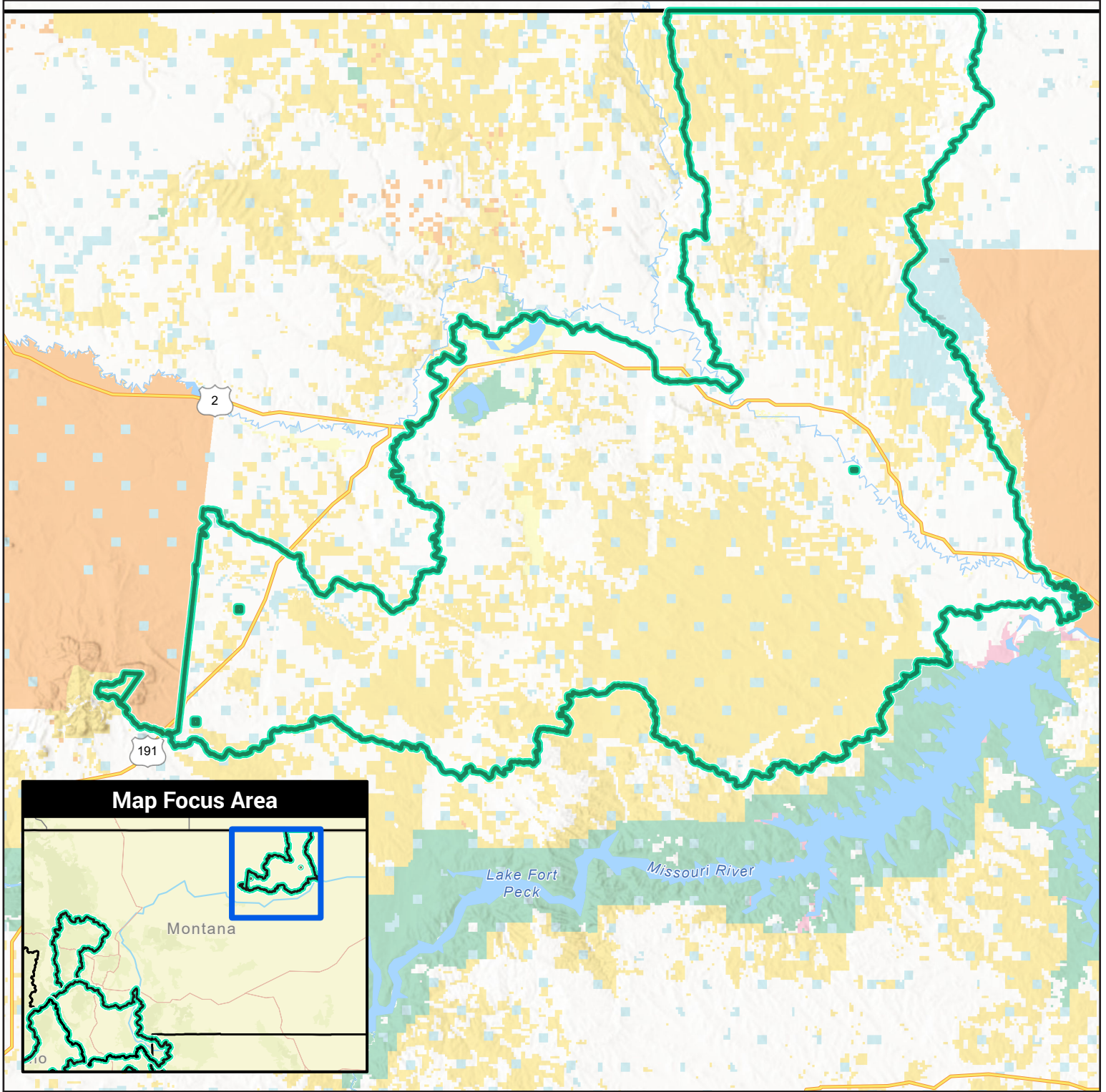


Conduct Fire/Fuels Treatments



South Valley County, Montana.

The Hi-Line Sagebrush Anchor, North Central Montana Restoration Landscape



- | | | | |
|-----------------------------|---------------------------------|--------------------------------|--------------------|
| Restoration Landscape | Bureau of Land Management (BLM) | US Fish and Wildlife (USFW) | State |
| U.S. State Boundary | National Park Service (NPS) | Bureau of Reclamation (USBR) | Local |
| Department Of Defense (DOD) | US Forest Service (USFS) | Bureau of Indian Affairs (BIA) | Private or Unknown |