

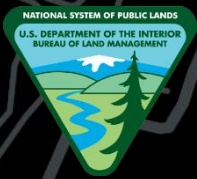
San Luis Valley Field Office

- Manages nearly 500,000 acres of public land in Colorado's Rio Grande Basin.
- Myriad ecosystems: from alpine desert to the majestic Sangre de Cristo Wilderness on the eastern side of the Valley.

Dario Archuleta, Acting Field Manager

Katie Singleton, Acting Assistant Field Manager

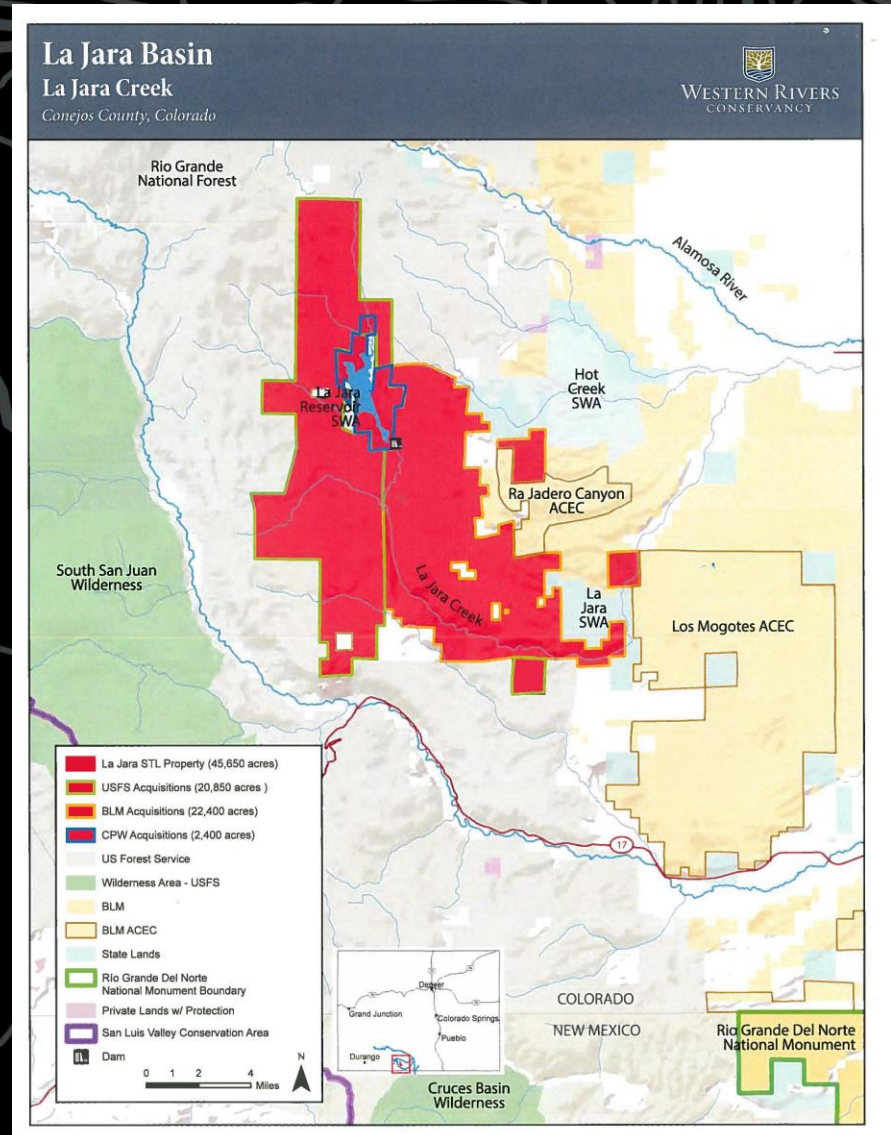




Land and Water Conservation Funds (LWCF)

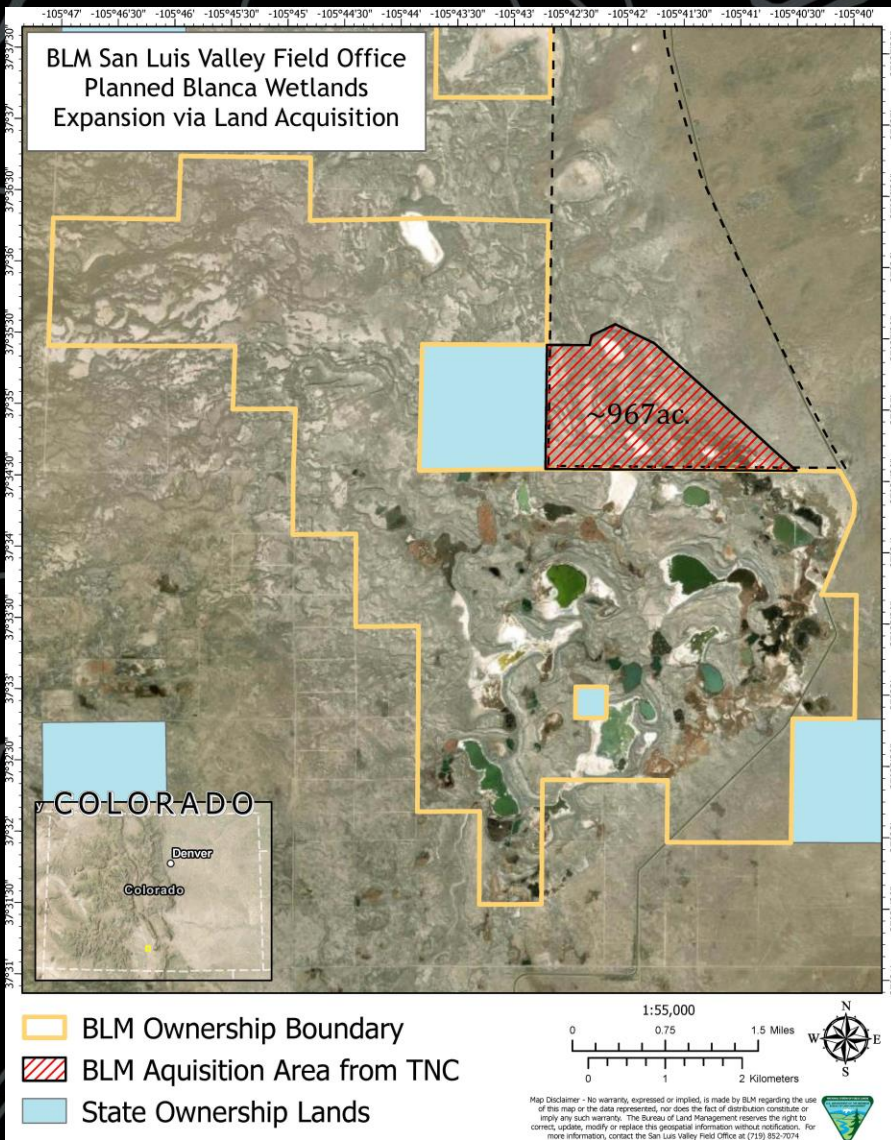
La Jara State Lands Trust Acquisition:

- State Land Board wants to sell 45,650 acres to:
 - Forest Service,
 - BLM (22,400 acres), and
 - Colorado Parks and Wildlife
- 3rd-party partner: Western Rivers Conservancy
- Time-frame: 2 to 3 years
- Beneficial for:
 - Hunting and fishing
 - Wildlife habitat
 - Traditional uses
 - Cultural sites
 - Grazing
 - Recreational opportunities





North Tract Acquisition

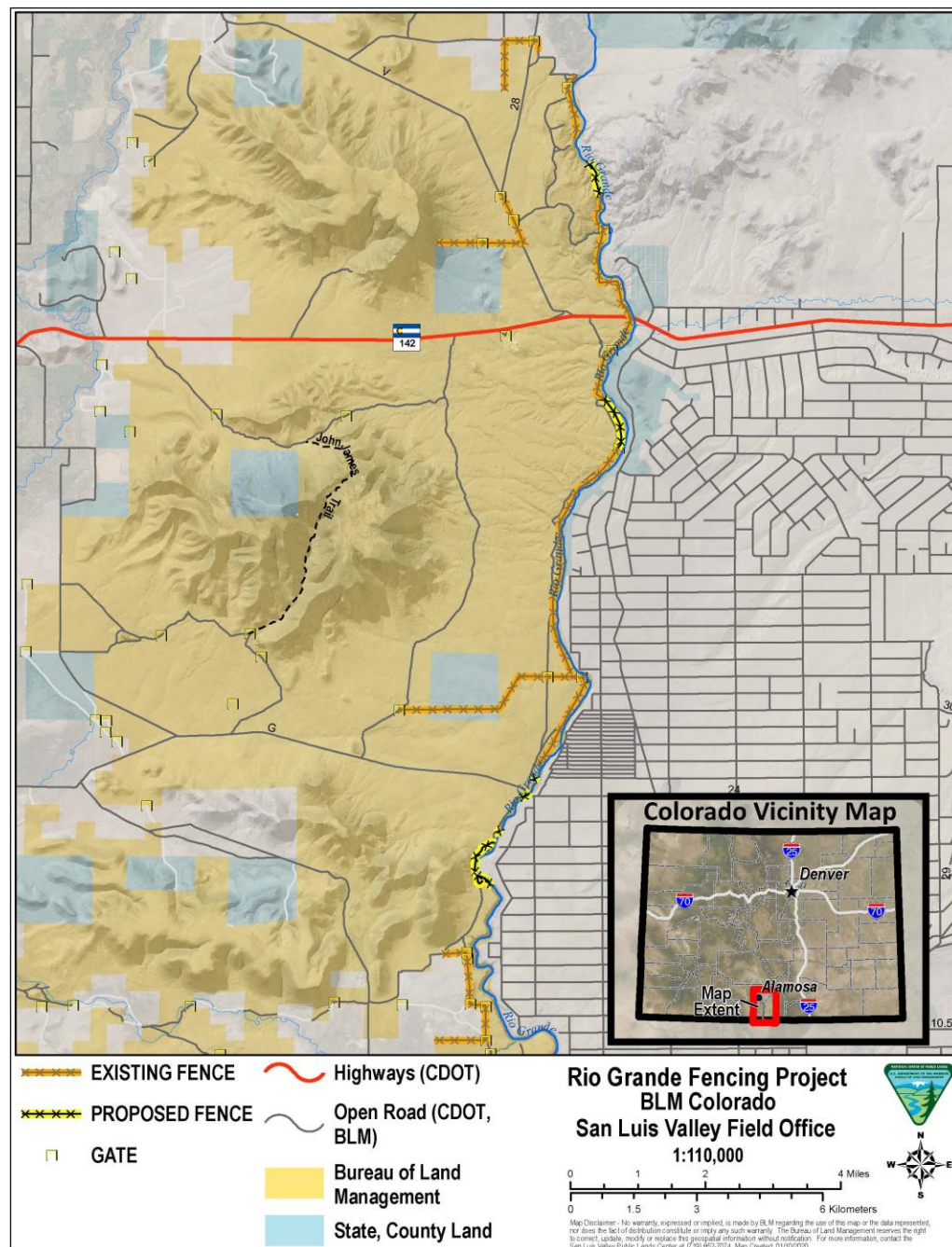


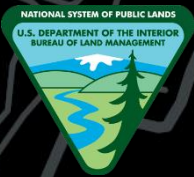
- 970 acre tract owned by The Nature Conservancy (TNC), next to Blanca Wetlands
- At very beginning stages of project
- Time-frame: by end of 2023
- Acquisition would help restore wetlands, which provide crucial habitat for various species, and protect cultural resources



Chronic Livestock Trespass

- Unauthorized Use/Trespass on the Lower Rio Grande within the Rio Grande Natural Area.





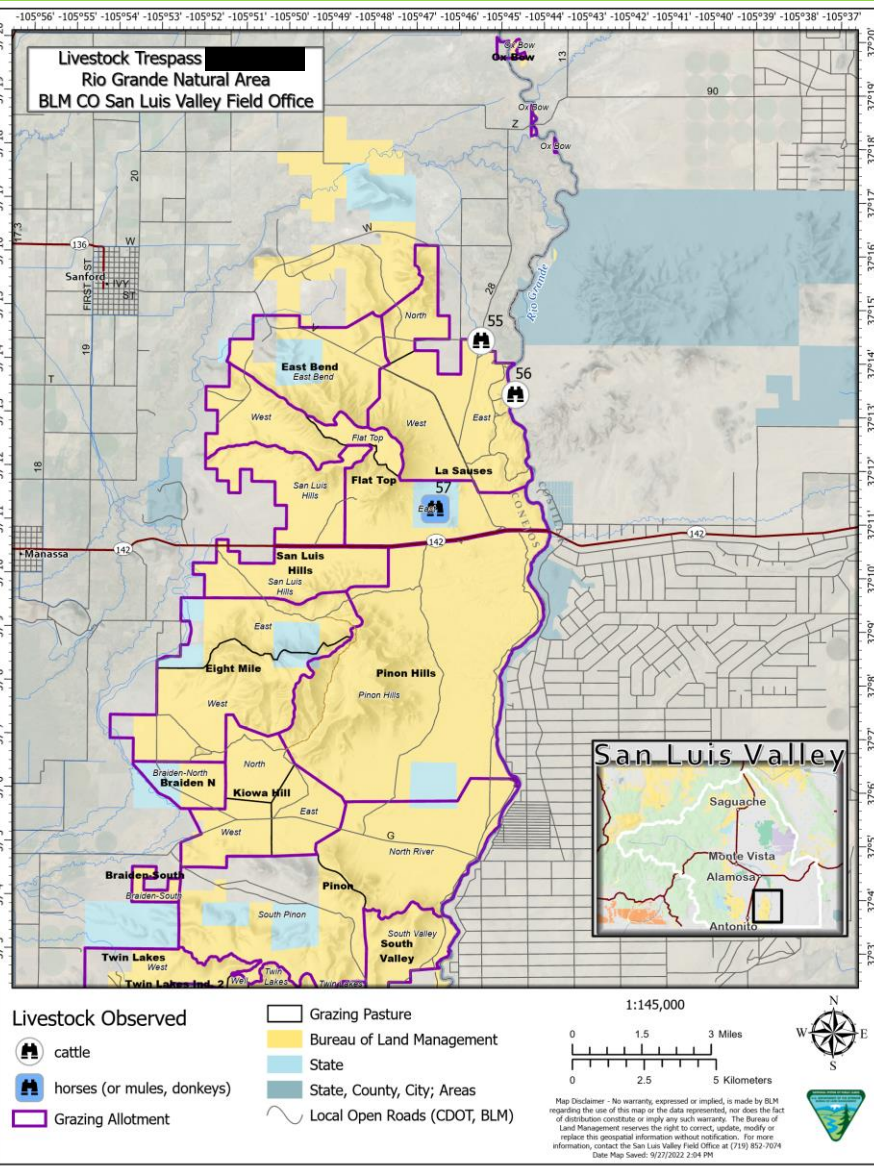
Chronic Livestock Trespass

Monitoring process: Individual Trespass Survey123 forms

- Streamlines data gathering process
- Automates generation of reports and maps

Since July 7, 2022:

- 196 individual observations/survey reports of potential trespass livestock
- Other types of trespass as well: e.g. private closure signs on BLM





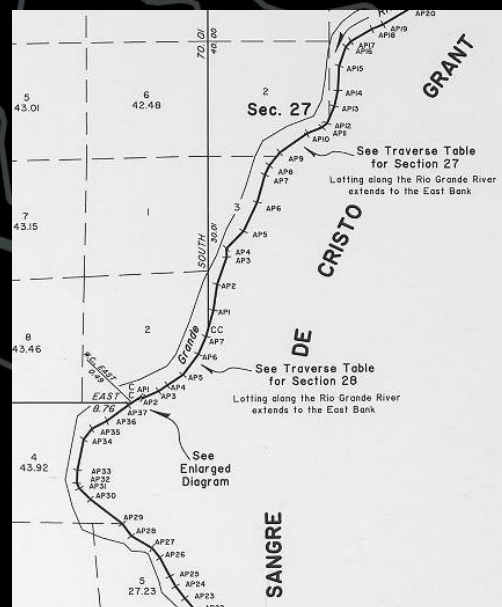
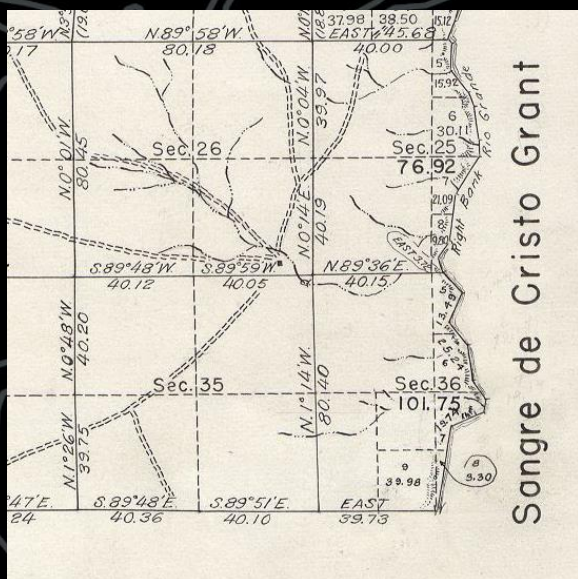
Rio Grande Survey

Sangre de Cristo Land Grant: western boundary is also the boundary between public and private lands along the Rio Grande River

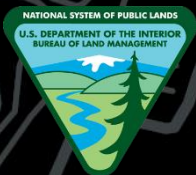
- Boundary has been interpreted and surveyed in different ways at different times

At the center of the river by GLO in New Mexico in the 1940s

At the the ordinary high-water mark on the E. bank of the river by BLM Colorado in 2003



After extensive research, BLM Colorado will now follow the precedent of the 1940s GLO surveys in New Mexico



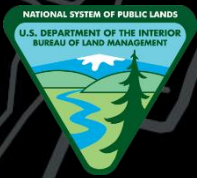
Rio Grande Survey

Next steps:

- Future surveys and resurveys of public lands in this area will use the median line (center of river) as the boundary (in most cases)
- Certain current resurveys of public lands will be suspended
- Corrective resurveys will be performed over the next several years
- Conejos and Costilla County Commissioners were notified by letter on September 21, 2022
- Interested landowners and other stakeholders will be notified prior to the corrective resurveys

Consequences:

- Private landowners benefit and are able to move forward with sales
- BLM conservation efforts, river recreation, hunting & fishing opportunities, and BLM grazing permittees may be impacted



Sangre de Cristo Dark Sky Reserve

Coalition formed in 2019, with the intention of achieving Dark Sky Reserve certification from the International Dark-Sky Association

Goals:

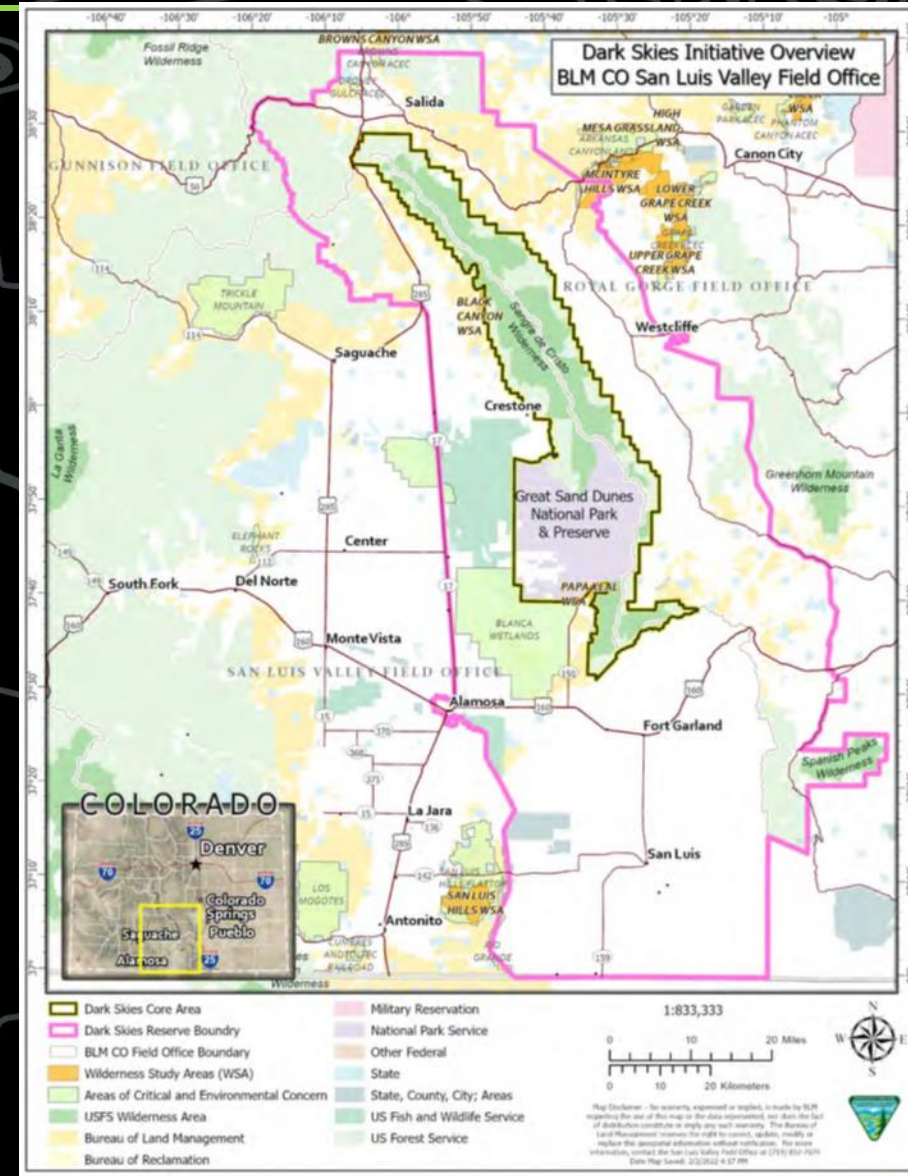
- Promote Astro-tourism, enhancing local economies.
- Promote the connection to nature and enjoyment of the night sky.
- Promote protection of the night-time environment.
- Encourage land administrators, surrounding communities, and private interests to identify dark skies as a valuable resource in need of proactive protection.

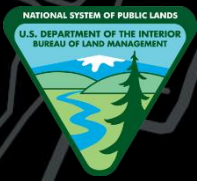
Partners:

- BLM-San Luis Valley and Royal Gorge Field Offices
- USFS-Rio Grande and Pike/San Isabel National Forests
- USFWS-San Luis ValleyNWR Complex
- NPS-Great Sand Dunes National Park
- SLVGO!-San Luis Valley Great Outdoors
- Town of Crestone
- Orient Land Trust



Private: 1,621,193 (60%)





Sangre de Cristo Dark Sky Reserve

Next Steps:

- Developing Lighting Management Plan
- Preparing application for Reserve certification
- Continue Public Outreach





U.S. Department of the Interior
Bureau of Land Management
San Luis Valley Field Office

BLM-San Luis Valley Field Office



Lobatos Bridge Recreation and Interpretive Education Project

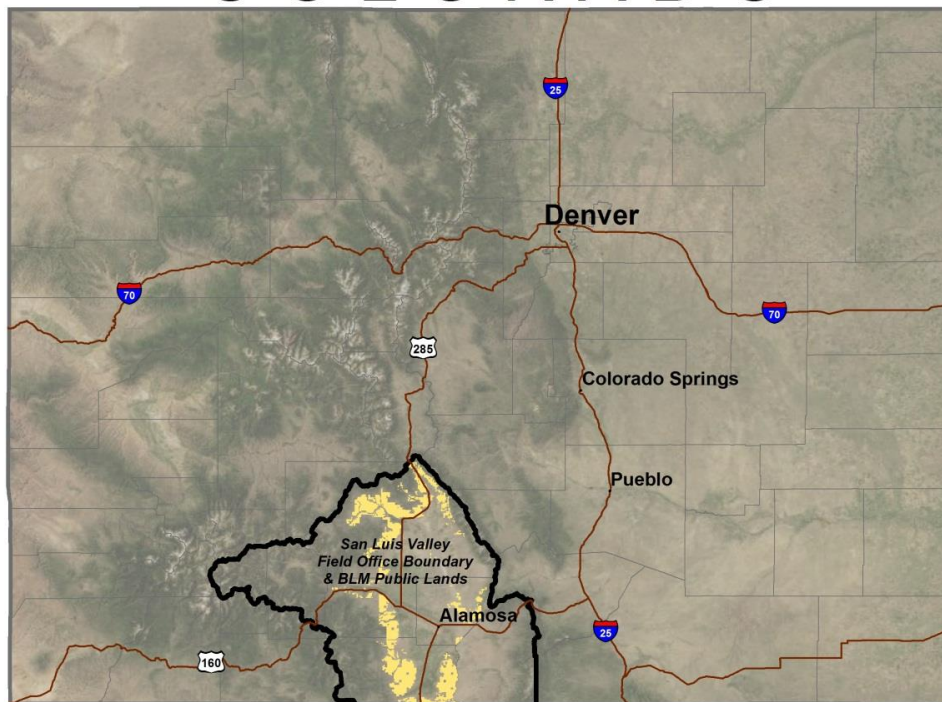
March 2023



U.S. Department of the Interior
Bureau of Land Management
San Luis Valley Field Office

BLM San Luis Valley Field Office (SLVFO)

COLORADO

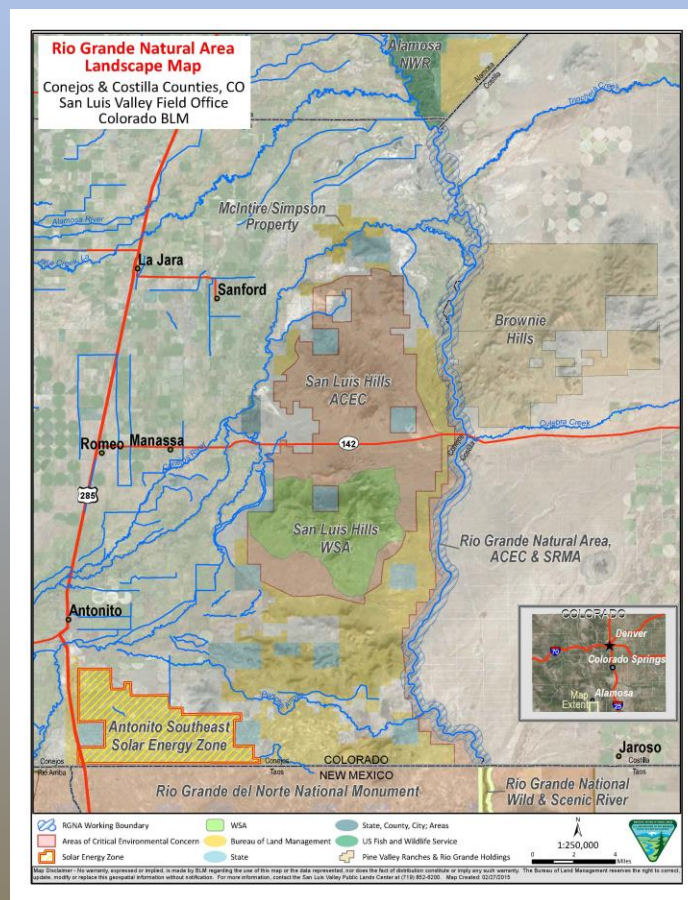
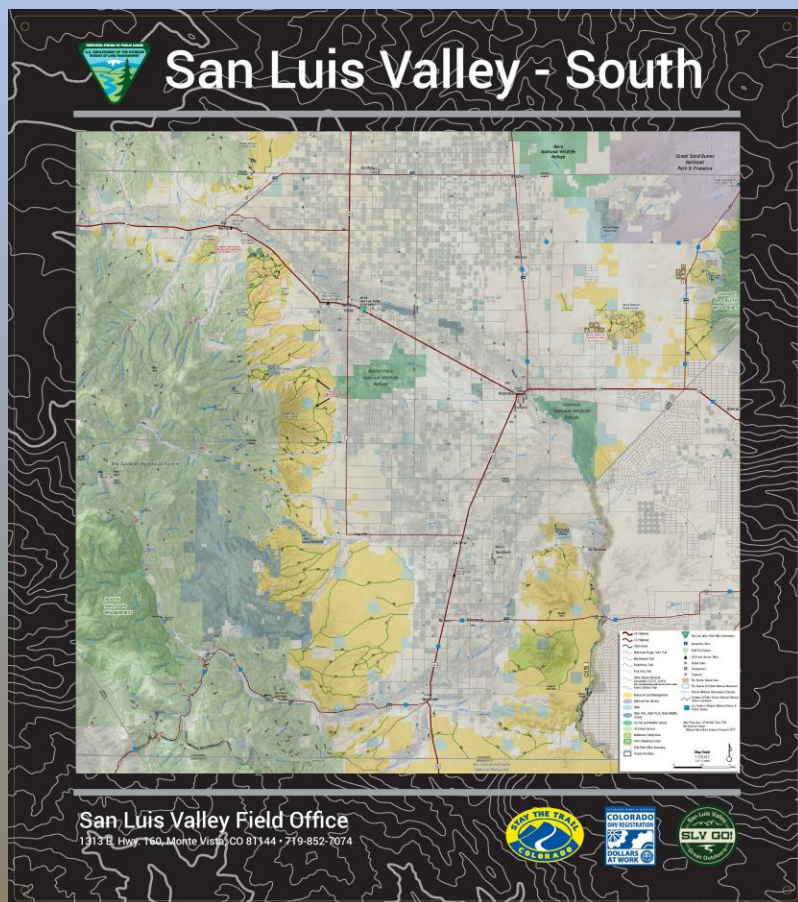


Vicinity Map



U.S. Department of the Interior
Bureau of Land Management
San Luis Valley Field Office

San Luis Hills – Rio Grande Natural Area





U.S. Department of the Interior
Bureau of Land Management
San Luis Valley Field Office

Project Description

- Develop Site for Resource Benefit
 - Interpretive Site
 - Boat Ramp
- Develop Site for Rec Benefits
 - Social, Economic, and Environmental
- Fulfill Plans
 - RGNA Mgmt. Plan
 - RGNA Act
 - RG Corridor Plan
 - RMP
- Heritage Tourism Destination
 - CTO-Mystic Valley
 - SLVTA & County Tourism
- HOL-Hands On the Land
 - Nature-Based Classroom
 - Local Community Pride
 - Embajadores (GO! Equity in the Outdoors)
 - CCW and SdC-NHA
 - Generation Wild (GenWild)
 - ASU (Classes and Adventure Program)





Lobatos Bridge Site Plan

• Interpretive Panels

- Story in Every Direction
- Petroglyph
- Boat Ramp/River Info

• Boat Ramp

- Improved Access to River
- Vehicles and Trailers

• Picnic Sites

- 3 x Tables
- Fire Rings

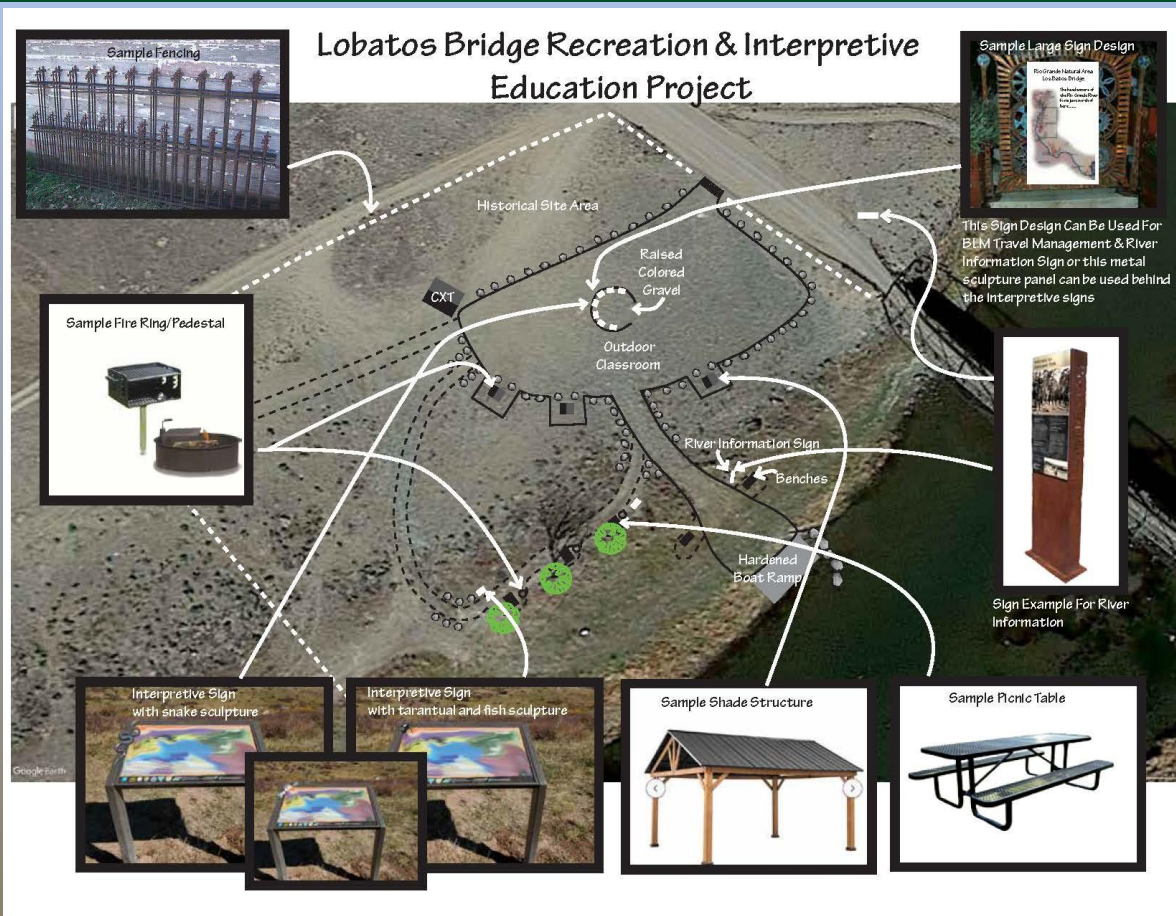
• Parking Area

- Road Base
- Boulders

• Fencing

- Decorative & Functional
- Cattleguard Replaces Gate

• Vault Toilet





U.S. Department of the Interior
Bureau of Land Management
San Luis Valley Field Office

Lobatos Bridge Site Plan

Simulation of Boat Ramp
Access at
Lobatos Bridge







U.S. Department of the Interior
Bureau of Land Management
San Luis Valley Field Office

Partners

- The Great Outdoors Fund (TGOF)
 - SLV & CO - BLM Pilot Project
 - Primary Fundraiser
- SLV Great Outdoors (SLV GO!)
 - GOAT's – Field Crew/Implementation
- Sangre de Cristo NHA
 - Interpretive Content
 - Fundraising
- Counties
 - Conejos – GOCO 'Applicant'
 - Costilla
- ASU Salazar RGdN Center
 - 142 Bridge Project in 2020
 - In-Between Directors





U.S. Department of the Interior
Bureau of Land Management
San Luis Valley Field Office

Milestones/Timeline

- ☒ NEPA
- ☒ Site Design
- ☒ Support from Representatives
 - ☒ Conejos County – GOCO Applicant
 - ☒ Costilla County
 - ☒ State Sen. Cleave Simpson
 - ~State Rep. Matt Martinez
 - ~Sen. Michael Bennett
 - ~Sen. John Hickenlooper
- Current Workload
 - Fundraising – TGOF Crowdfunding
 - Interpretive Sign Development
 - GOCO Community Impact Grant (Aug)
 - Other Grants
- Ribbon-Cutting Ceremony
 - Late Spring/Early Summer ('24)
 - Similar to SH-142 Bridge Project ('20)

