



U.S. Department of the Interior  
Bureau of Land Management

---

# Uncompahgre Field Office

## Gunnison Gorge National Conservation Area

### Recreation Program Updates

---

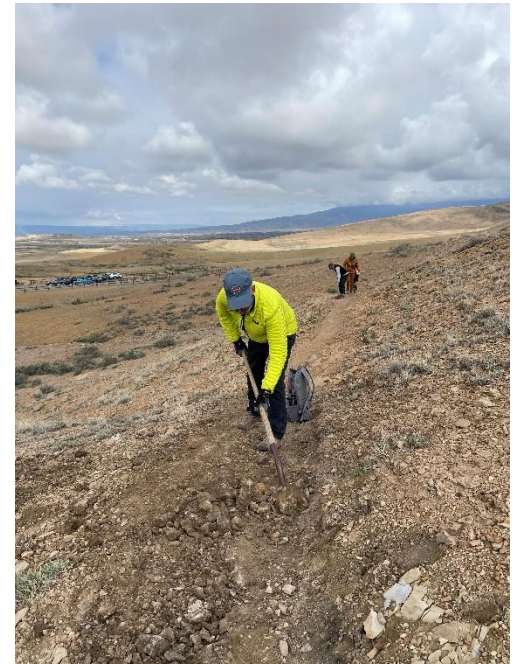






# Follow Ups

- Any questions or discussion topics from yesterday?
  - River float
  - Eagle Rock Shelter <https://skfb.ly/KEwq>
  - Smith Mountain Trail project





# Updates: Jumbo Mountain

- Received high levels of public participation
- Sorting comments and responding
- Incorporating any changes and updates to EA
- Connecting with local partners
- Hoping to have signed EA before end of summer







# Updates: Business Plan

- Incorporating edits from Colorado State Office review
- Hoping to send it to Headquarters for review by the end of June





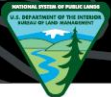


# Future Projects: West End

- UFO's next large trail project
- Supporting communities of Nucla and Norwood
- Planning grant was funded by CPW and completed in 2019
- Looking at entire Paradox Valley ERMA area
- Motorized and non-motorized opportunities
- Support facilities

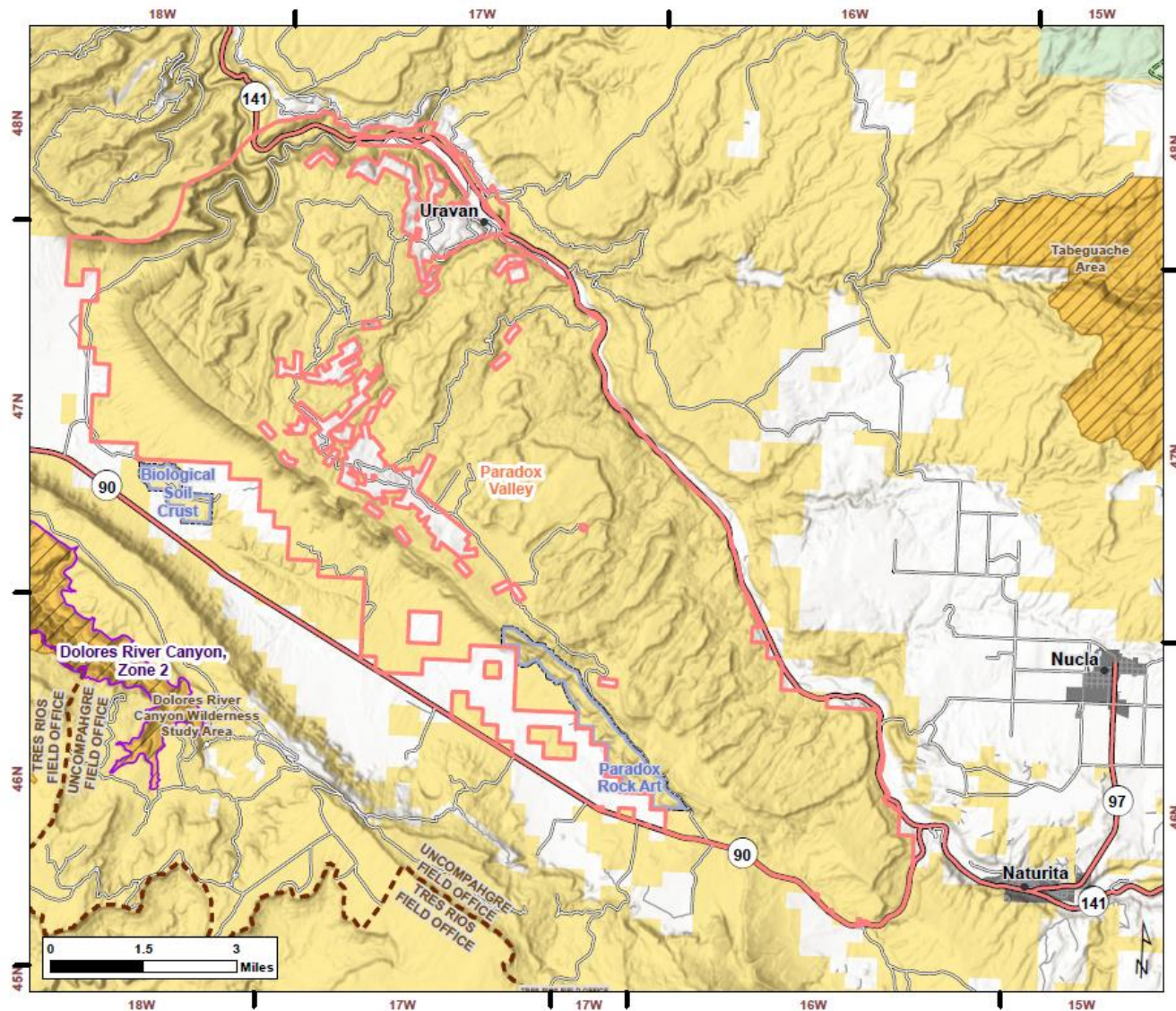






## Paradox Valley Extensive Recreation Management Area

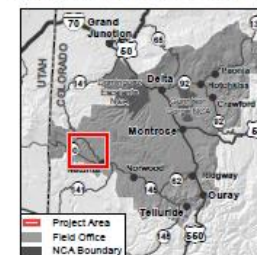
BLM Colorado | Southwest District | Uncompahgre Field Office



- Trail Head
- State Highway
- County Road
- Local or Private Road
- Forest Service Route
- ACEC
- BLM Wilderness Study Area
- Bureau of Land Management
- Private
- US Forest Service
- Municipal Boundary
- Feature Subtype
  - Special RMA
  - Extensive RMA

Map Produced by BLM Uncompahgre Field Office Staff

File: MyProject  
Date: 4/18/2023  
Map Scale: 1:143,051  
Coordinate System: NAD 1983 UTM Zone 13N  
CO Reference System: U.S. PLSS NMM / 6th M



DISCLAIMER: No warranty is made by the Bureau of Land Management as to the accuracy, reliability, or completeness of these data for individual use or aggregate use with other data. Decisions in this document only apply to BLM lands. Routes depicted on non-BLM lands are displayed for information purposes only and do not grant access to non-BLM lands.



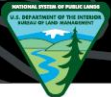


# Wildlife Habitat and Recreation

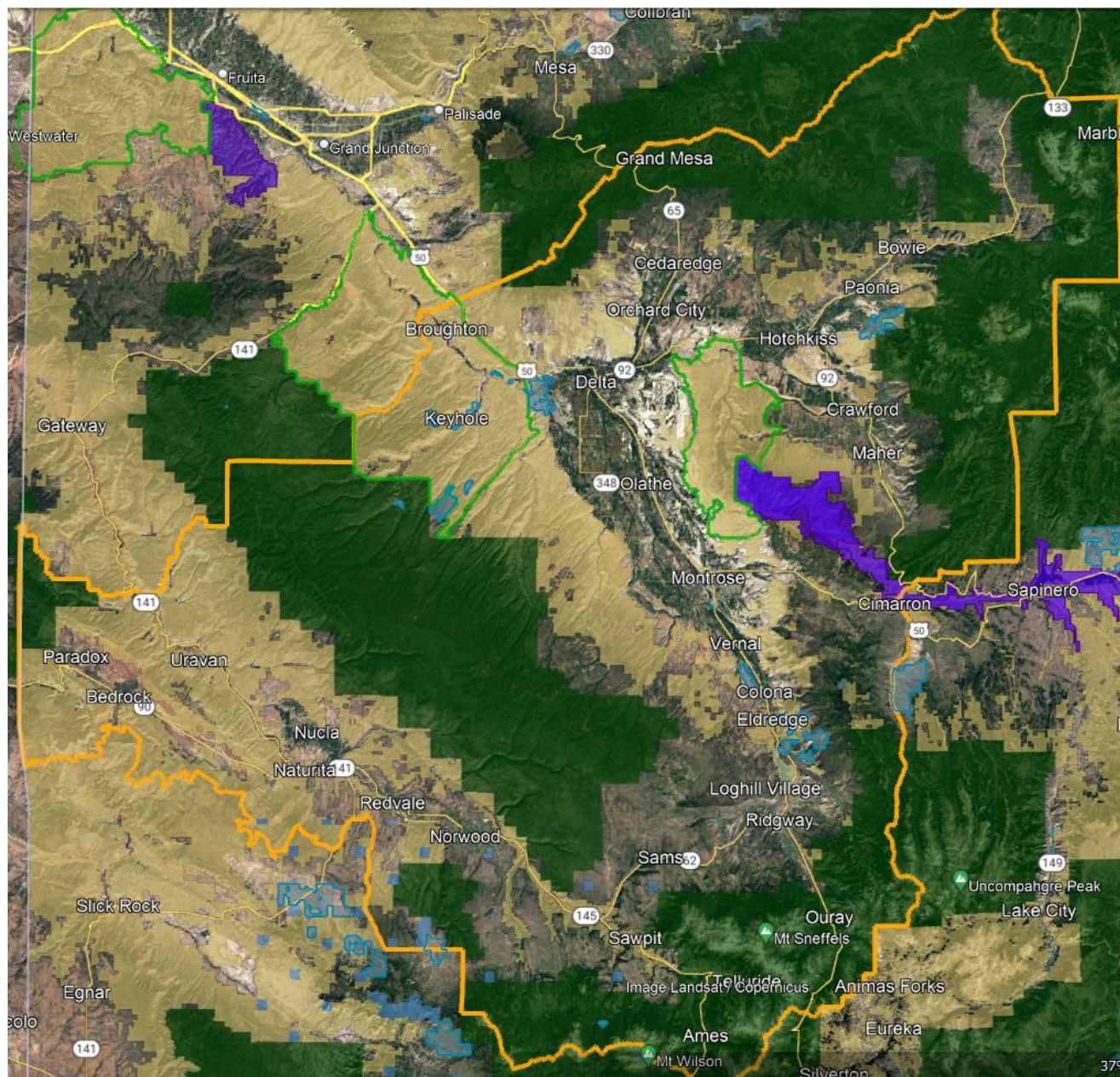
- CPW Habitat Mapping in Google Earth
- Significant overlap with UFO Planning Area
- CPW Species Map Data:  
<https://cpw.state.co.us/learn/pages/kmz-maps.aspx>



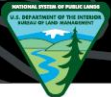




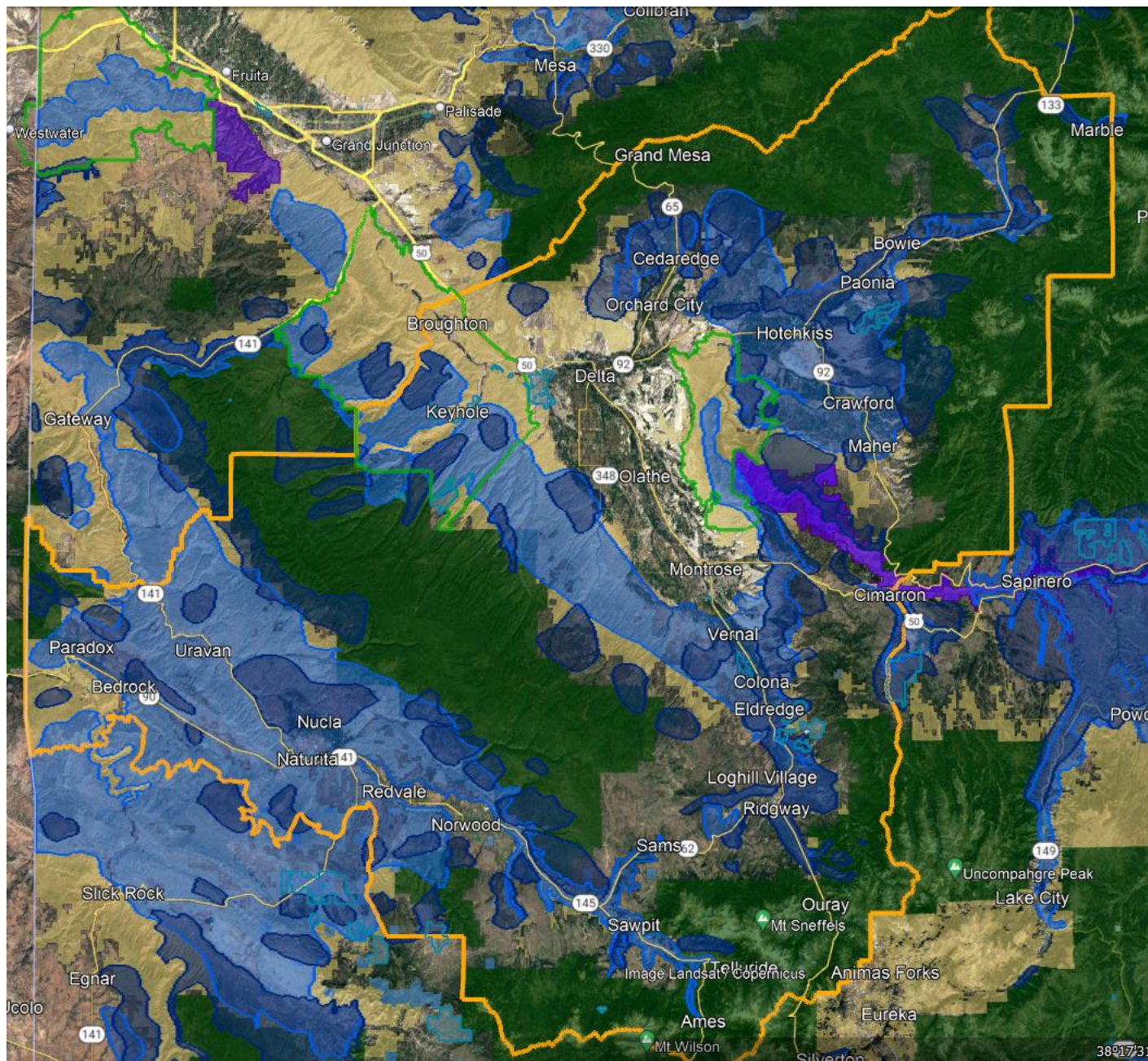
U.S. Department of the Interior  
Bureau of Land Management



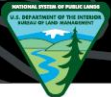




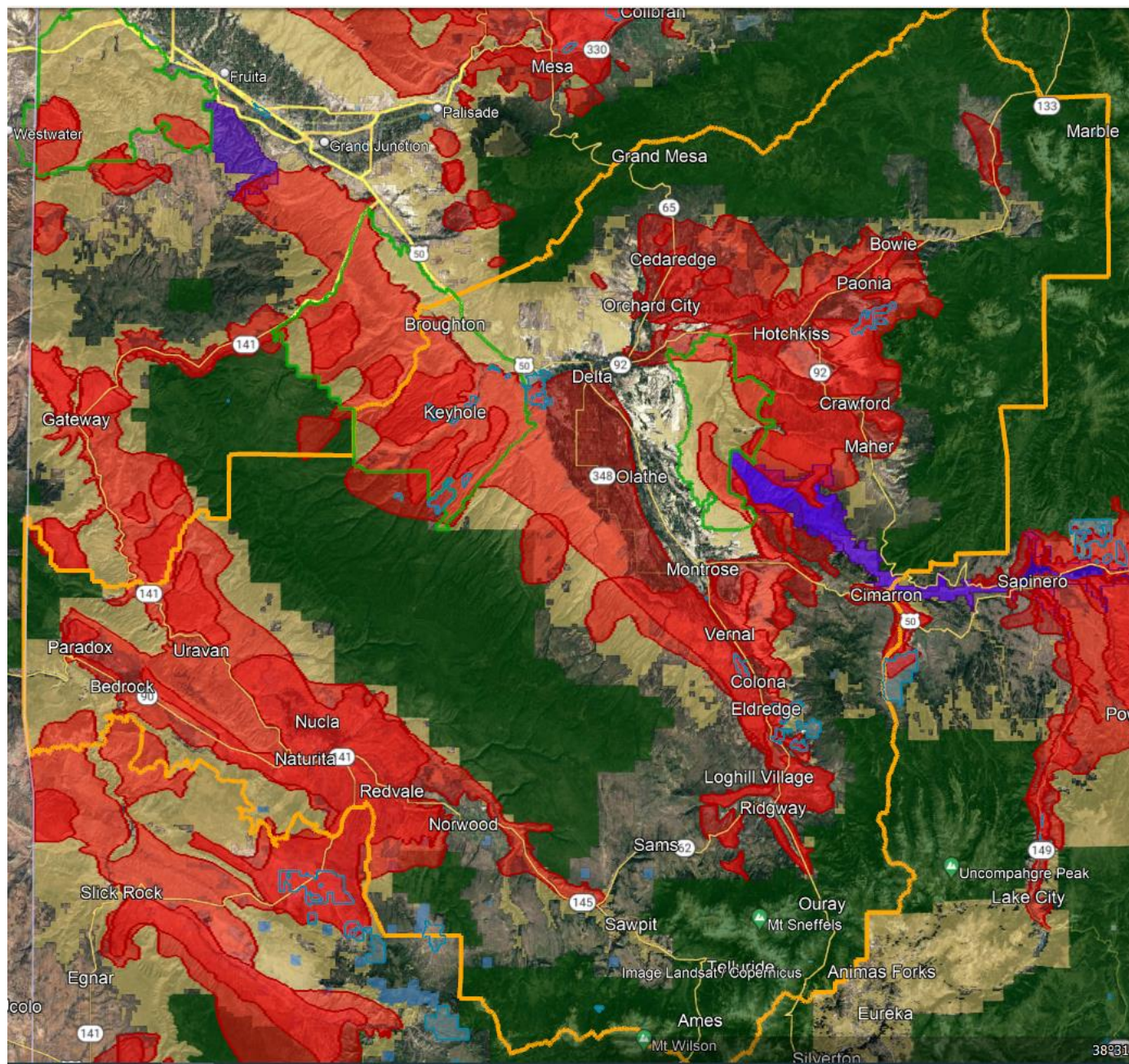
# Elk winter concentration areas and severe winter range







Mule Deer  
winter  
concentration  
areas and severe  
winter range











# RAC Discussion/Advice: Tools and Approaches to Try?

- Tools/approaches to more effectively collaborate early?
- What kind of data may be helpful?





