



Southeast Oregon Sagebrush



Sagebrush landscape in southeast Oregon.

The Bureau of Land Management is infusing \$161 million for ecosystem restoration and resilience on the nation's public lands, as part of the Biden-Harris Administration's Investing in America agenda. The proposed work will focus on 21 "Restoration Landscapes" across 11 western states, restoring public lands, strengthening communities and local economies, advancing climate resilience and furthering our commitment to Tribal collaboration and partnership.

Conservation of habitat for greater sage-grouse is the priority for this landscape. Planting sagebrush, treating invasive or encroaching vegetation, promoting growth of native vegetation, and creating fuel breaks in uplands will restore habitat for many species. Restoration in the Warner sub-basin will focus on aquatic systems that the threatened Warner sucker and Lahontan cutthroat trout require. Restoring floodplains and riparian areas and improving instream habitat also enhance the value of the Warner wetlands for migratory birds.

This effort will complement \$2.38 million of funding from the Bipartisan Infrastructure Law.



Oregon Badlands Wilderness.

Restoration Features



Create Climate Resilience



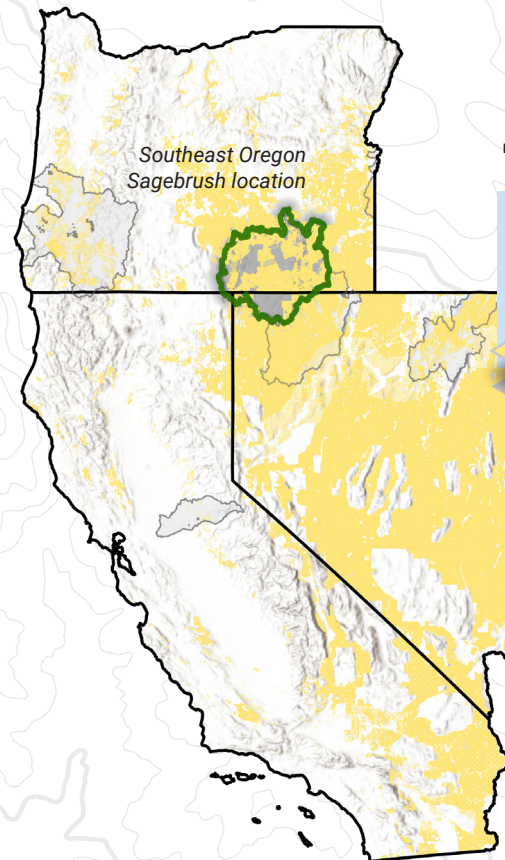
Restore Streams/ Hydrology



Restore Riparian/ Wetland



Protect native plants & remove invasive species



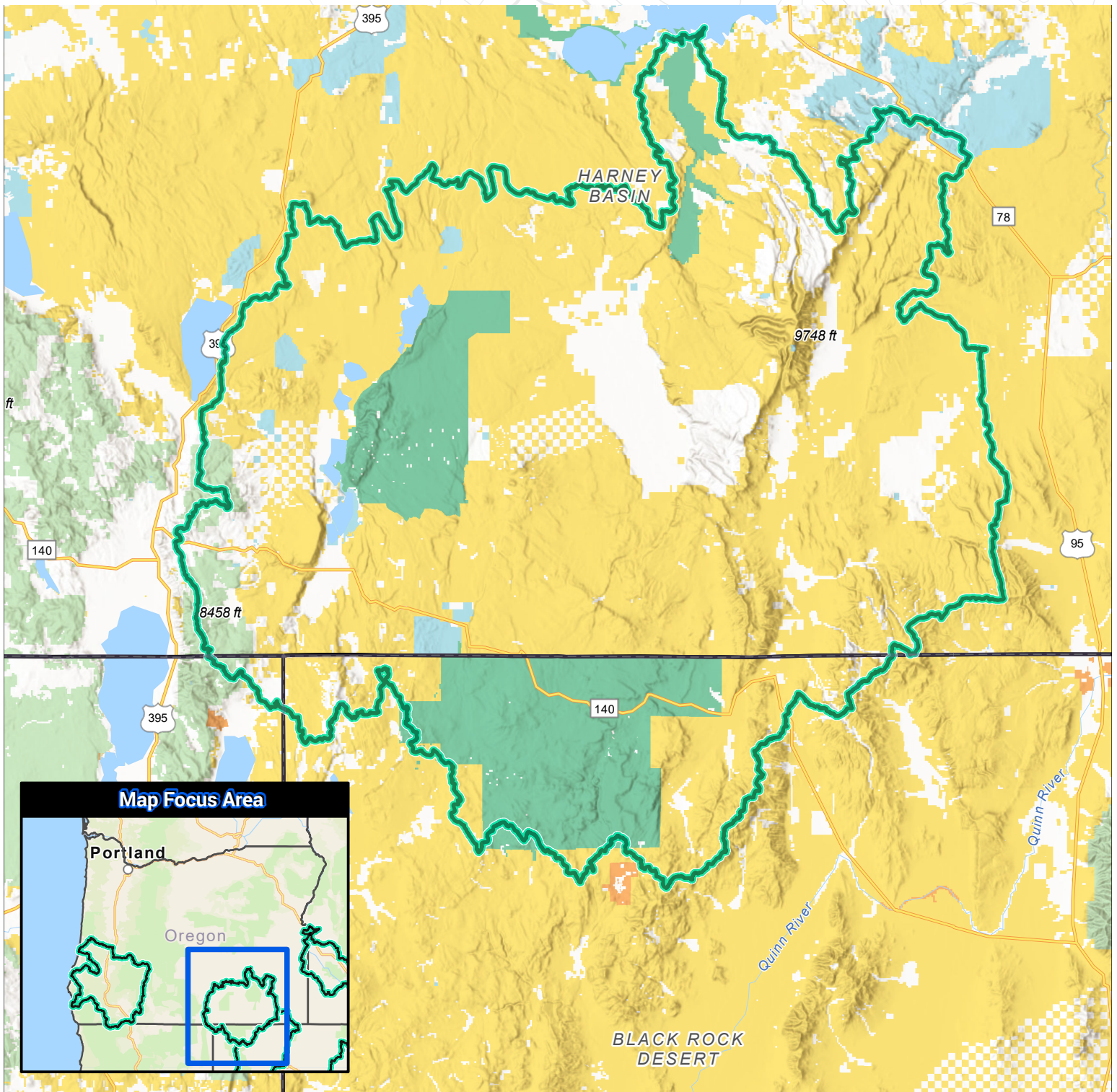
Southeast Oregon Sagebrush location

\$5M
INFLATION REDUCTION ACT

5.73M
TOTAL ACRES

3.72M
BLM-managed acres

Southeast Oregon Sagebrush Restoration Landscape



- | | | | |
|-----------------------------|---------------------------------|--------------------------------|--------------------|
| Restoration Landscape | Bureau of Land Management (BLM) | US Fish and Wildlife (USFW) | State |
| U.S. State Boundary | National Park Service (NPS) | Bureau of Reclamation (USBR) | Local |
| Department Of Defense (DOD) | US Forest Service (USFS) | Bureau of Indian Affairs (BIA) | Private or Unknown |