



Snake River Plain



Elk wintering on the Snake River Plain near Boise, Idaho.

The Bureau of Land Management is infusing \$161 million for ecosystem restoration and resilience on the nation's public lands, as part of the Biden-Harris Administration's Investing in America agenda. The proposed work will focus on 21 "Restoration Landscapes" across 11 western states, restoring public lands, strengthening communities and local economies, advancing climate resilience and furthering our commitment to Tribal collaboration and partnership.

The Snake River plain of southwest Idaho is a diverse, arid landscape in the most populous part of the state. Greater sage-grouse, the highest concentration of breeding raptors in North America, important winter range for mule deer, elk and antelope, and critical habitat for the threatened slickspot peppergrass are all at risk from the effects of a changing climate and increasing urbanization. Repeated cycles of fire and invasive annual grasses threaten the unique assemblage of plants and wildlife, and pose a great risk to the human communities that live there. Restoring native grasses, perennial forbs, sagebrush and other shrubs is critical to the health of the region. The BLM will also work to expand fuel breaks, aiming to protect these investments in restoration.

This effort will complement \$8.44 million of funding from the Bipartisan Infrastructure Law.

Restoration Features



Create Climate Resilience



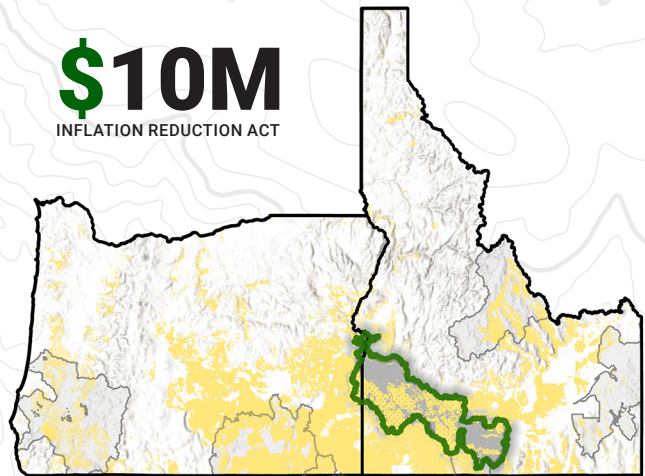
Conduct Fire/Fuels Treatments



Protect native plants & remove invasive species

\$10M

INFLATION REDUCTION ACT

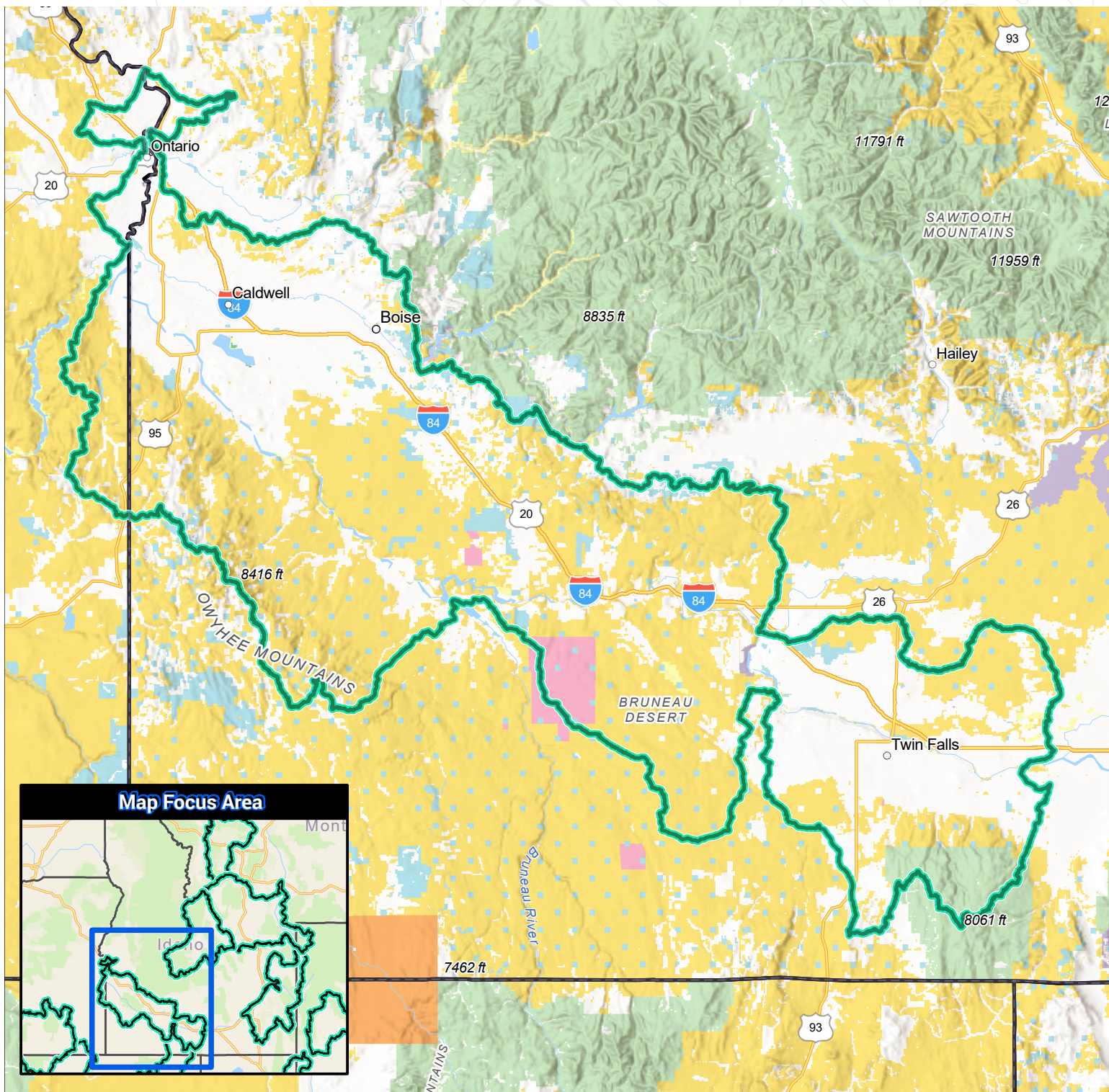


Snake River Plain location

5.49M
TOTAL ACRES

2.59M
BLM-managed acres

Snake River Plain Restoration Landscape



- | | | | |
|-----------------------------|---------------------------------|--------------------------------|--------------------|
| Restoration Landscape | Bureau of Land Management (BLM) | US Fish and Wildlife (USFW) | State |
| U.S. State Boundary | National Park Service (NPS) | Bureau of Reclamation (USBR) | Local |
| Department Of Defense (DOD) | US Forest Service (USFS) | Bureau of Indian Affairs (BIA) | Private or Unknown |