



# East Idaho Rivers and Plains



Teton Restoration Area.

The Bureau of Land Management is infusing \$161 million for ecosystem restoration and resilience on the nation’s public lands, as part of the Biden-Harris Administration’s Investing in America agenda. The proposed work will focus on 21 “Restoration Landscapes” across 11 western states, restoring public lands, strengthening communities and local economies, advancing climate resilience and furthering our commitment to Tribal collaboration and partnership.

The South Fork, Henry’s Fork, Main Stem of the Snake River and surrounding uplands are home to diverse native vegetation, from resilient mountain big sagebrush communities to large riparian cottonwood galleries. BLM has a long and successful history in this area working with private landowners to protect valuable habitat and resources through conservation easements and acquisition of private lands. Restoring native plant communities on public land will build on that work, providing habitat for Threatened and special status species such as monarch butterflies, greater sage-grouse and the western yellow-billed cuckoo, connectivity for treasured big game, and enhanced recreation opportunities. Projects will also seek to collaborate with the Shoshone-Bannock Tribe to restore riparian areas on public lands and the Fort Hall Indian Reservation.

This effort will complement \$1.78 million of funding from the Bipartisan Infrastructure Law.

## Restoration Features



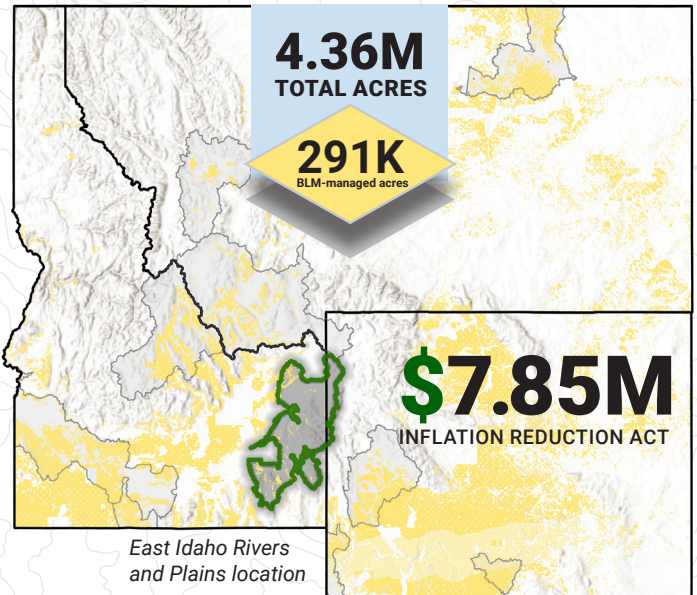
Create Climate Resilience



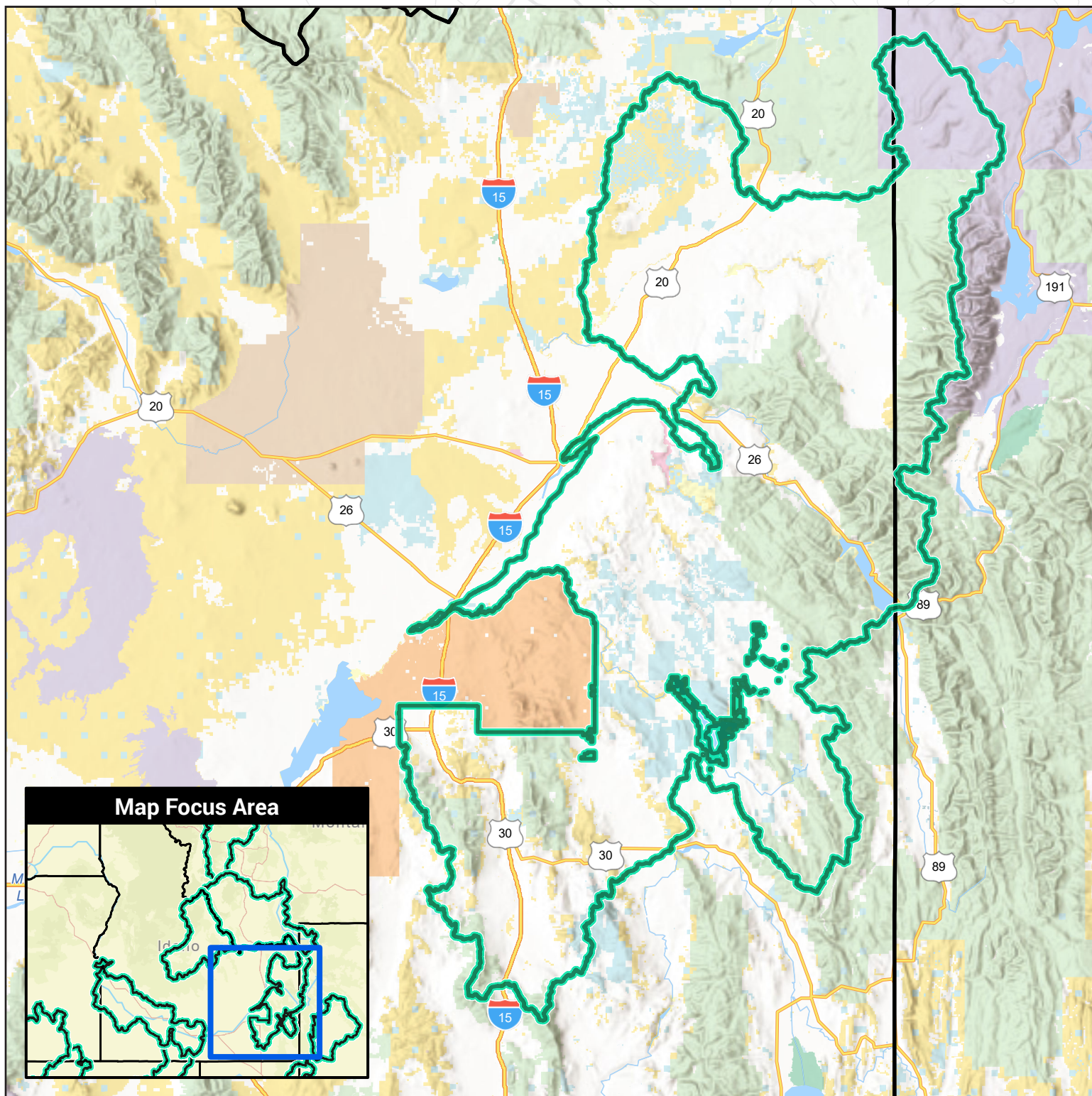
Protect native plants & remove invasive species



Restore Riparian/Wetland



# East Idaho Rivers and Plains Restoration Landscape



- |                             |                                 |                                |                    |
|-----------------------------|---------------------------------|--------------------------------|--------------------|
| Restoration Landscape       | Bureau of Land Management (BLM) | US Fish and Wildlife (USFW)    | State              |
| U.S. State Boundary         | National Park Service (NPS)     | Bureau of Reclamation (USBR)   | Local              |
| Department Of Defense (DOD) | US Forest Service (USFS)        | Bureau of Indian Affairs (BIA) | Private or Unknown |