



# San Luis Valley



San Luis-Blanca Wetlands.

The Bureau of Land Management is infusing \$161 million for ecosystem restoration and resilience on the nation's public lands, as part of the Biden-Harris Administration's Investing in America agenda. The proposed work will focus on 21 "Restoration Landscapes" across 11 western states, restoring public lands, strengthening communities and local economies, advancing climate resilience and furthering our commitment to Tribal collaboration and partnership.

Ecologically critical wetlands and riparian areas provide habitat for numerous birds and federally listed species, and the area is sacred to a number of Tribes. Investments in restoring this landscape provide a unique opportunity for the BLM to conserve and restore wildlife habitat and fisheries, improve hunting and fishing opportunities, and foster climate resilience while benefiting historically underserved, disproportionately impacted communities. Projects will protect cultural and historic resources, expand recreational uses, and manage fuels and water resources at the headwaters of one of America's great rivers, the Rio Grande.



Birds at San Luis-Blanca Wetlands.

## Restoration Features



Create Climate Resilience



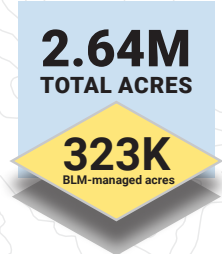
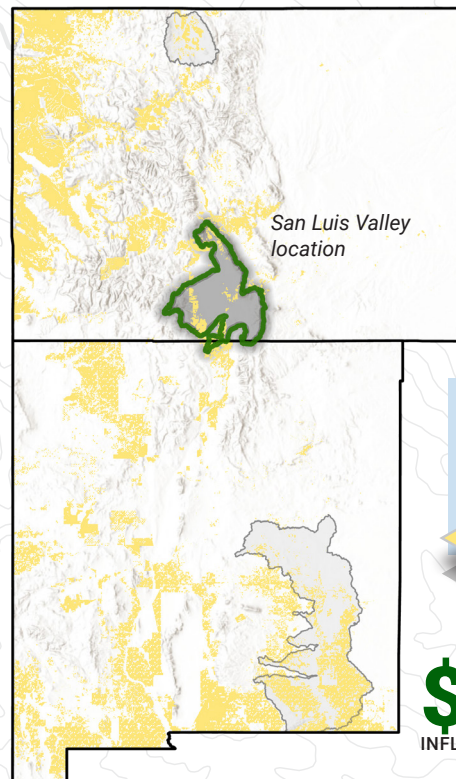
Restore Streams/Hydrology



Enhance Recreation Experiences

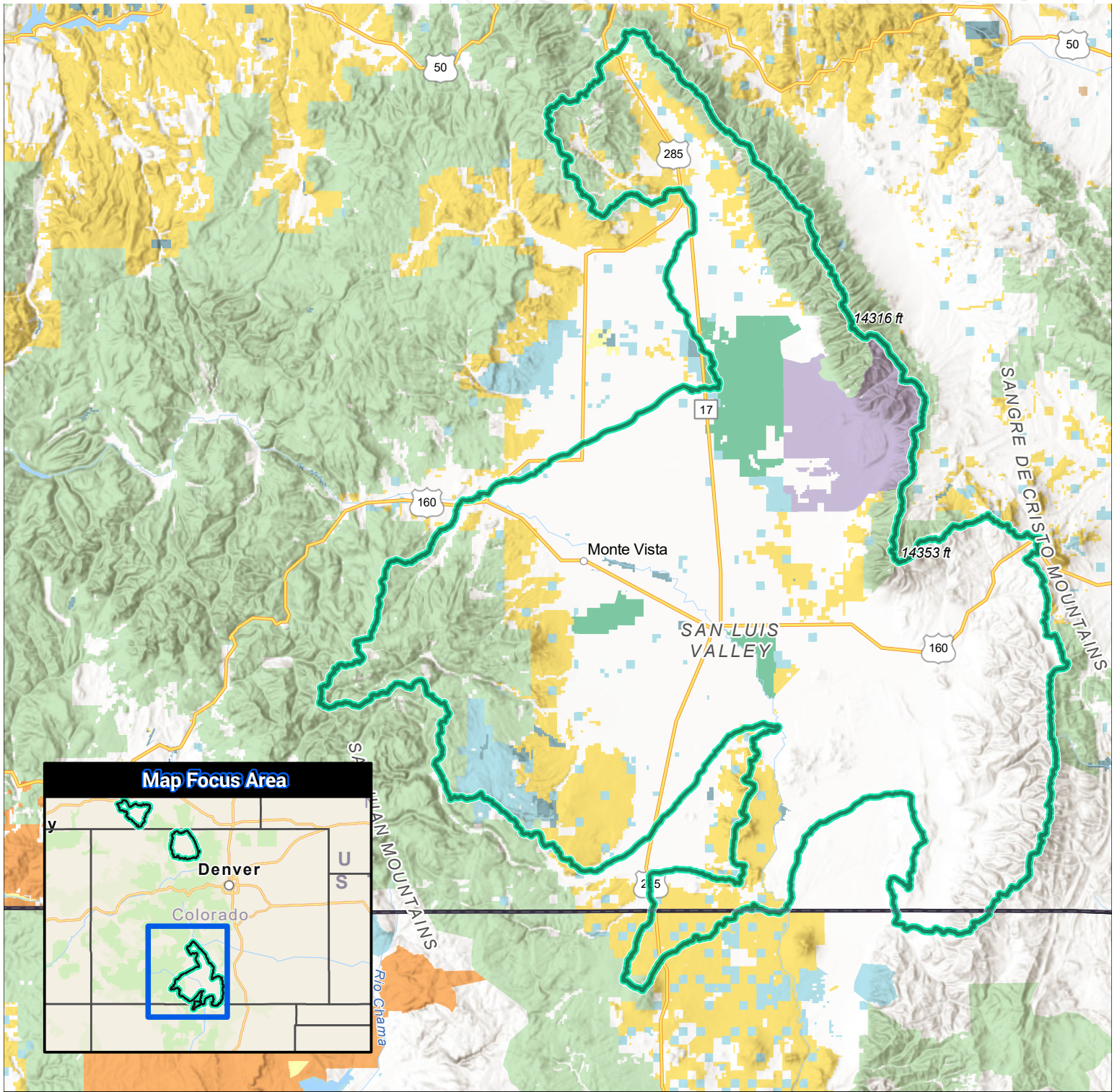


Conduct Fire/Fuels Treatments





# San Luis Valley Restoration Landscape



- |                             |                                 |                              |       |
|-----------------------------|---------------------------------|------------------------------|-------|
| Restoration Landscape       | Bureau of Land Management (BLM) | US Fish and Wildlife (USFW)  | State |
| U.S. State Boundary         | National Park Service (NPS)     | Bureau of Reclamation (USBR) | Local |
| Department Of Defense (DOD) | US Forest Service (USFS)        | Private or Unknown           |       |
|                             | Bureau of Indian Affairs (BIA)  |                              |       |