



U.S. Department of the Interior
Bureau of Land Management

RESTORATION LANDSCAPE

Cosumnes Watershed



Cosumnes Preserve Area.

The Bureau of Land Management is infusing \$161 million for ecosystem restoration and resilience on the nation's public lands, as part of the Biden-Harris Administration's Investing in America agenda. The proposed work will focus on 21 "Restoration Landscapes" across 11 western states, restoring public lands, strengthening communities and local economies, advancing climate resilience and furthering our commitment to Tribal collaboration and partnership.

The Cosumnes is the last free-flowing river from the Sierra Nevada Mountains into California's Great Central Valley, where it joins with the Mokelumne to form a matrix of wetlands, riparian forest, and natural floodplains, with upland oak woodlands, savannas and vernal pools. These lands form critical habitat for migrating and wintering birds, essential waterways for native fish, and important social and economic benefits for Valley communities. The BLM manages crucial acreage in the Cosumnes River Preserve in cooperation with 11 partner organizations. It is home to the state's largest remaining riparian oak forest. Restoration investments will improve hydrologic function and landscape connectivity, control invasive species, and reduce hazardous fuels, ensuring this remarkable preserve is protected for future generations.

This effort will complement \$802,800 of funding from the Bipartisan Infrastructure Law.

Restoration Features



Create Climate Resilience



Protect native plants & remove invasive species



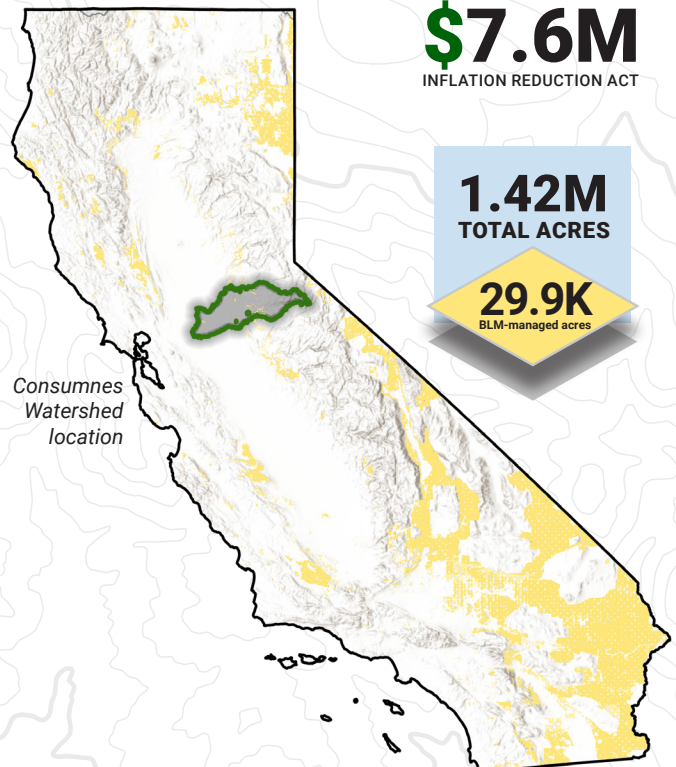
Restore Riparian/Wetland



Conduct Fire/Fuels Treatments

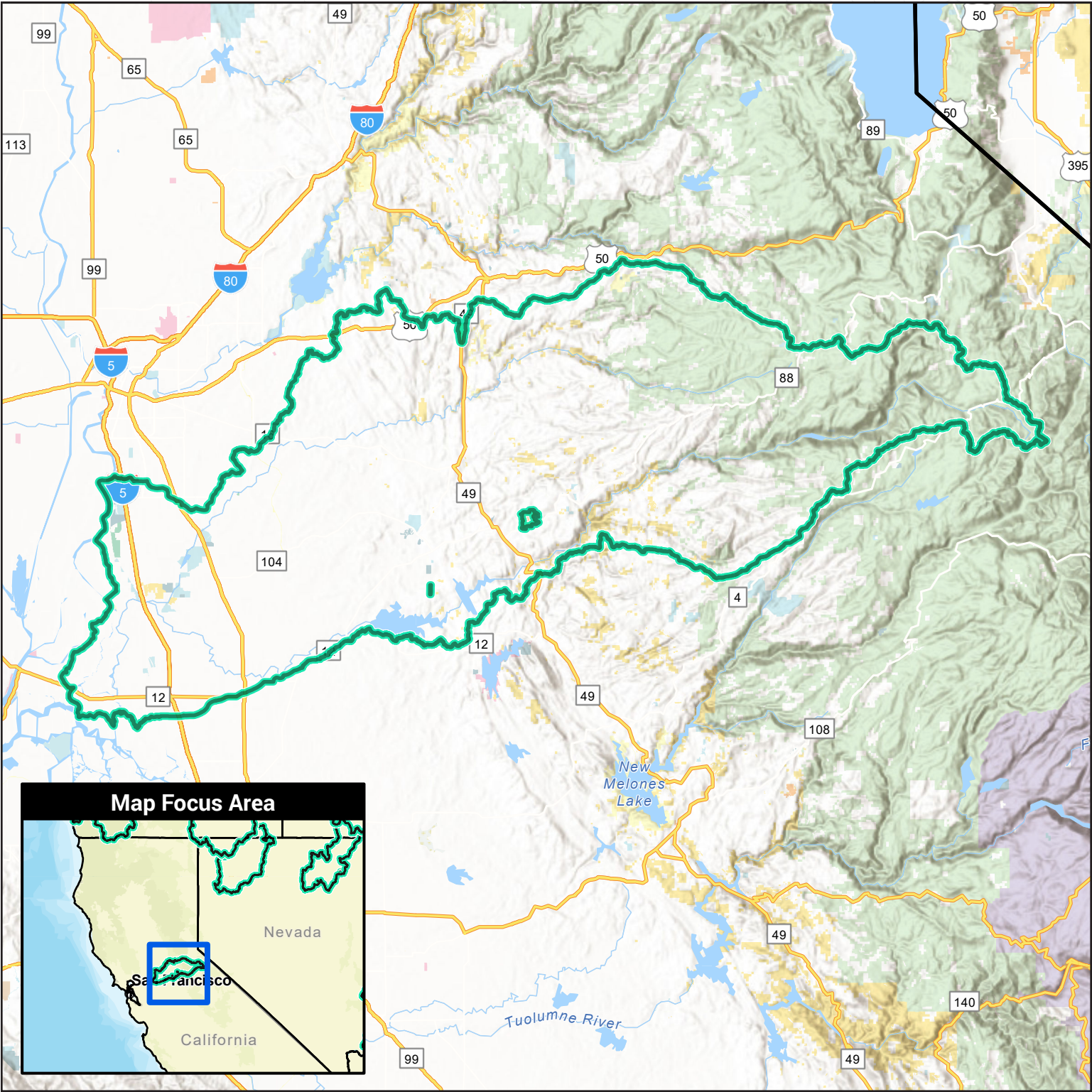


Restore Streams/Hydrology



For more information, visit: www.blm.gov/infrastructure

Cosumnes Watershed Restoration Landscape



- | | | | |
|-----------------------------|---------------------------------|--------------------------------|--------------------|
| Restoration Landscape | Bureau of Land Management (BLM) | US Fish and Wildlife (USFW) | State |
| U.S. State Boundary | National Park Service (NPS) | Bureau of Reclamation (USBR) | Local |
| Department Of Defense (DOD) | US Forest Service (USFS) | Bureau of Indian Affairs (BIA) | Private or Unknown |