



# Sky Islands



The San Pedro River is the lifeblood for an abundance of plant and wildlife.

The Bureau of Land Management is infusing \$161 million for ecosystem restoration and resilience on the nation's public lands, as part of the Biden-Harris Administration's Investing in America agenda. The proposed work will focus on 21 "Restoration Landscapes" across 11 western states, restoring public lands, strengthening communities and local economies, advancing climate resilience and furthering our commitment to Tribal collaboration and partnership.

Often rising more than 6,000 feet above the desert floor, Arizona's mountainous Sky Islands support levels of biodiversity rarely seen elsewhere in the West. This pocket of isolated mountains is home to a unique assemblage of over 30 federally listed species living in both desert and alpine ecosystems, and contains critical wildlife migration corridors for species such as jaguar and ocelot. The landscape, also known for its vast heritage and recreational opportunities, is under threat from unprecedented drought and catastrophic wildfire. Restoration investments will reduce fuel loads, improve groundwater management in the San Pedro River drainage, protect critical wildlife migration corridors, and support recovery of threatened and endangered wildlife. Investments in fencing will also address the long-standing issue of cattle trespass into the San Pedro Riparian National Conservation Area, helping to protect its critical desert riparian ecosystem.

This effort will complement \$2.3 million of funding from the Bipartisan Infrastructure Law.

## Restoration Features



Create Climate Resilience



Restore Streams/Hydrology



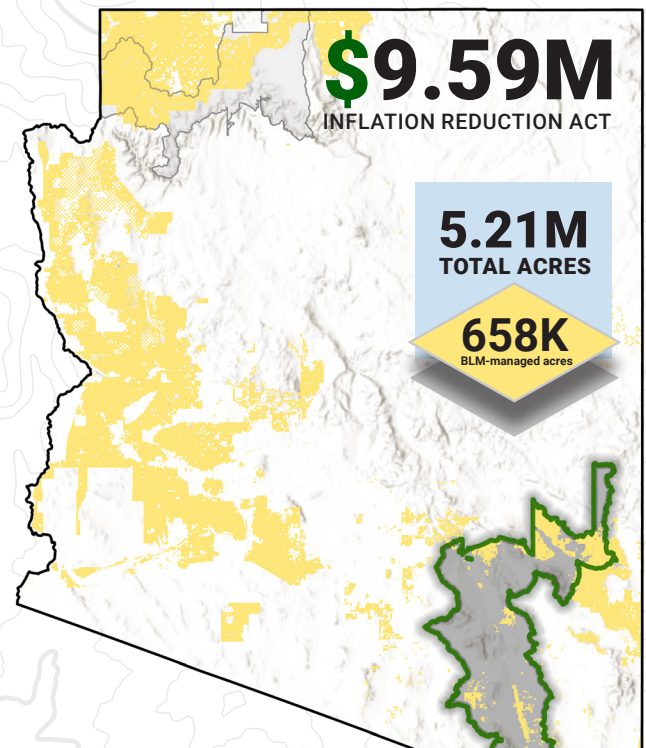
Enhance Recreation Experiences



Conduct Fire/Fuels Treatments

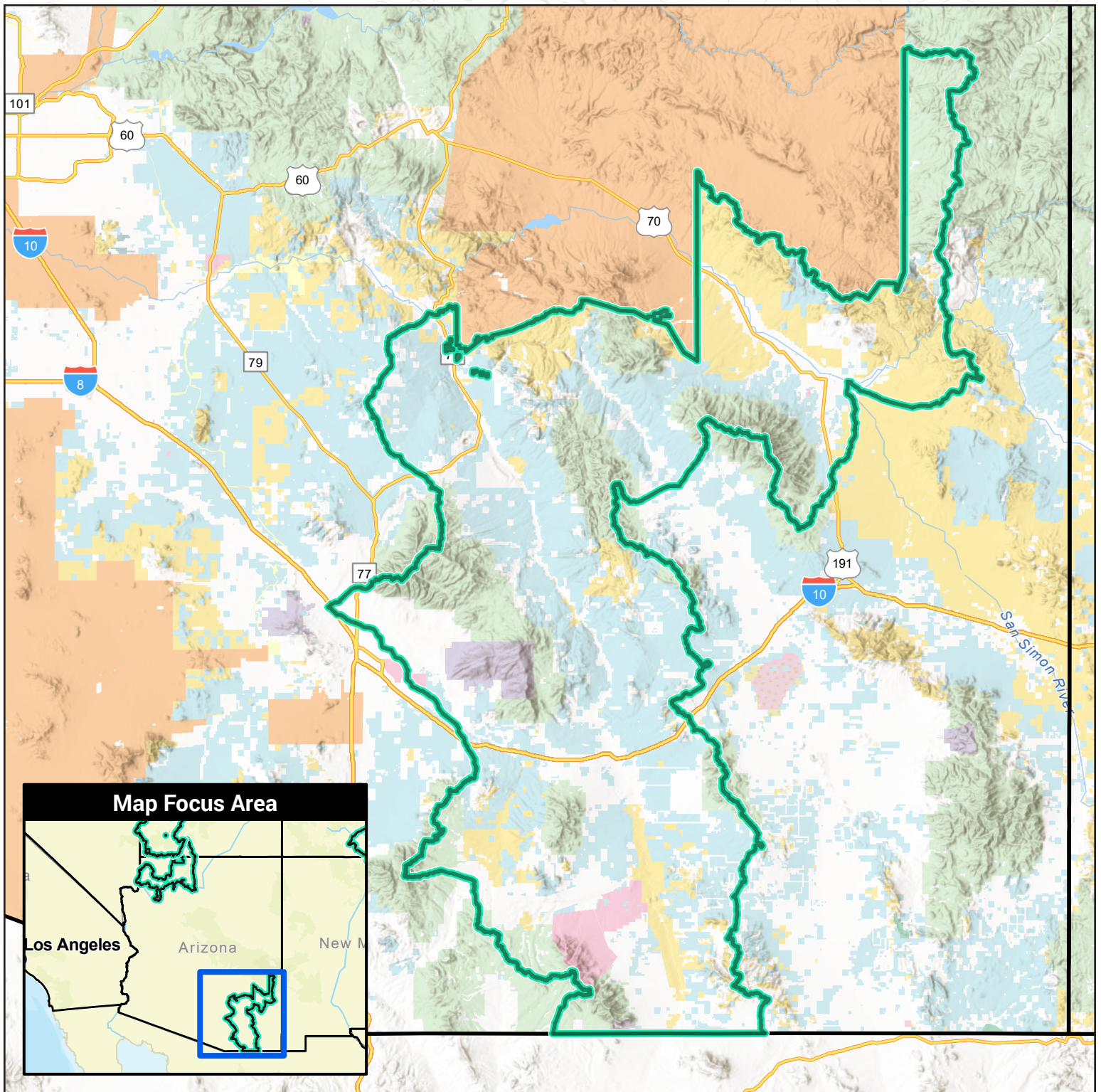


Restore Riparian/Wetland



Sky Islands location

# Sky Islands Restoration Landscape



- |                             |                                 |                                |                    |
|-----------------------------|---------------------------------|--------------------------------|--------------------|
| Restoration Landscape       | Bureau of Land Management (BLM) | US Fish and Wildlife (USFW)    | State              |
| U.S. State Boundary         | National Park Service (NPS)     | Bureau of Reclamation (USBR)   | Local              |
| Department Of Defense (DOD) | US Forest Service (USFS)        | Bureau of Indian Affairs (BIA) | Private or Unknown |