



Birch Creek & Fortymile Wild and Scenic Rivers



South Fork of Harrison Creek.

The Bureau of Land Management is infusing \$161 million for ecosystem restoration and resilience on the nation's public lands, as part of the Biden-Harris Administration's Investing in America agenda. The proposed work will focus on 21 "Restoration Landscapes" across 11 western states, restoring public lands, strengthening communities and local economies, advancing climate resilience and furthering our commitment to Tribal collaboration and partnership.

These landscapes in Eastern Interior Alaska contain nationally significant cultural, recreational, historic, archaeological, geological and wildlife values that the BLM have been working to conserve for decades. Placer mining is part of the region's cultural heritage but has also left behind degraded streams, impaired water quality, and hazardous materials. Restoration investments, which contribute to a significant cross-agency initiative to restore salmon habitat in the Yukon, Kuskokwim and Norton Sound region, will better monitor land and water condition, improve water quality and aquatic habitat, and ensure safe access for recreation.

These investments further the work of the Department's Gravel to Gravel Keystone Initiative, a mountains to the sea assessment and restoration approach, to enhance our understanding and improve the resilience of ecosystems and salmon in Alaska's Yukon, Kuskokwim and Norton Sound region.

Restoration Features



Create Climate Resilience



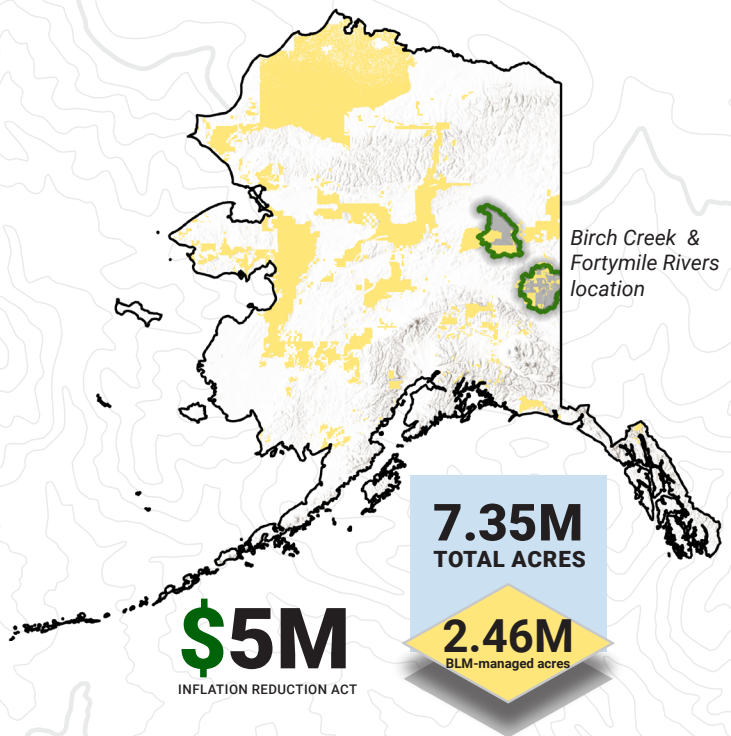
Restore Streams/Hydrology



Enhance Recreation Experiences

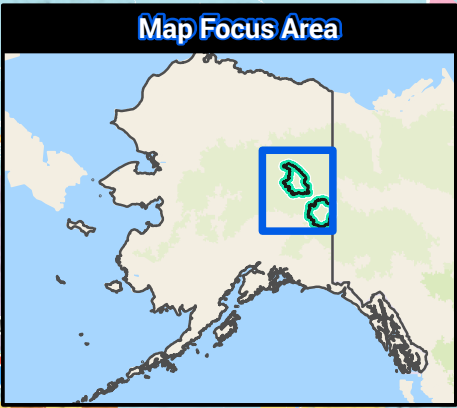
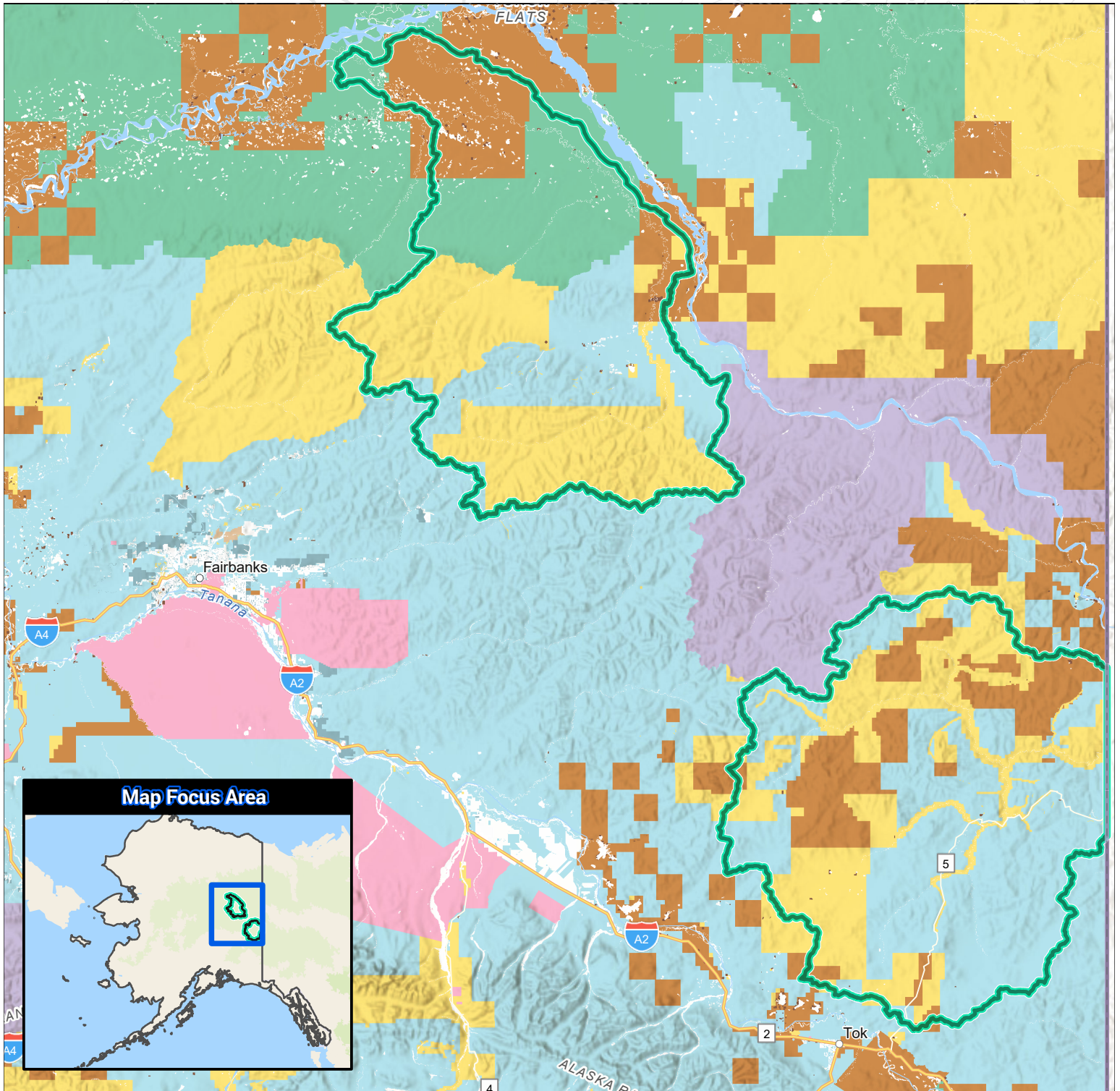


Protect native plants & remove invasive species



This effort will complement \$300,000 of funding from the Bipartisan Infrastructure Law.

Birch Creek and Fortymile Wild and Scenic Rivers Restoration Landscapes



- | | | | |
|-----------------------------|---------------------------------|--------------------------------|---------------------|
| Restoration Landscape | Bureau of Land Management (BLM) | US Fish and Wildlife (USFW) | State |
| U.S. State Boundary | National Park Service (NPS) | Bureau of Reclamation (USBR) | Local |
| Department Of Defense (DOD) | US Forest Service (USFS) | Bureau of Indian Affairs (BIA) | Private or Unknown |
| | | | Alaska Native Lands |