

R 2 E

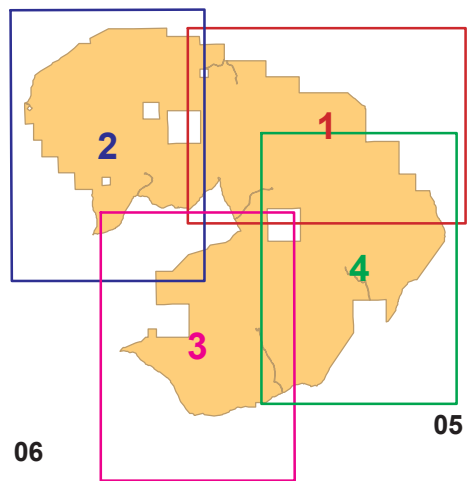
116°15'0"W

116°12'0"W

R 2 E

R 3 E

### Little Jacks Creek Wilderness Map Index



35  
Road excluded  
from wilderness

Latitude/Longitude of this location:  
42° 40' 18.787" N., 116° 13' 02.546" W.;  
1/4 corner of sections 3 and 4.

Twin Lakes

Ox Lake

Tigert  
Spring

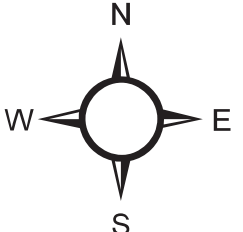
OWYHEE  
COUNTY

Little Jacks Creek Basin Road

#### LEGEND

- WILDERNESS**
  - Wilderness Legal Boundary Description
  - Designated BLM Wilderness
  - Land that would become wilderness if acquired by BLM
  - BLM proposes as non-wilderness if acquired
- SURFACE MANAGEMENT AGENCY**
  - Bureau of Land Management
  - State of Idaho
  - Private
- OTHER**
  - Primitive Road
  - Underground Oil or Gas Pipeline

See Index Map  
for full detailed legend.

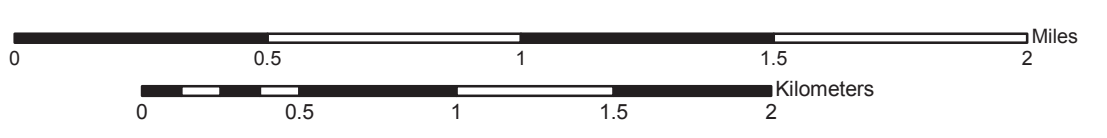


## LITTLE JACKS CREEK WILDERNESS

Map 3 of 4

U.S. Bureau of Land Management  
Boise District, Idaho

Omnibus Public Land Management Act of 2009  
Public Law 111-11



North American Datum of 1983  
Universal Transverse Mercator Zone 11

Map date: August 31, 2011

R 2 E

116°15'0"W

116°12'0"W

R 2 E

R 3 E