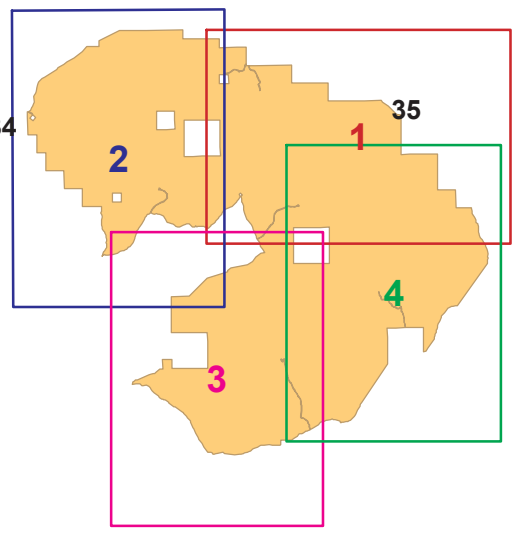


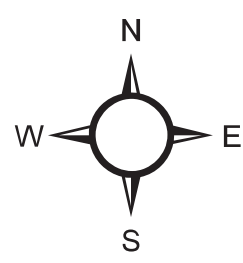
**Little Jacks Creek
Wilderness
Map Index**



Latitude/Longitude of this location:
42° 46' 17.813" N., 116° 14' 56.242" W.;
1/4 corner of sections 31 and 32.

LEGEND

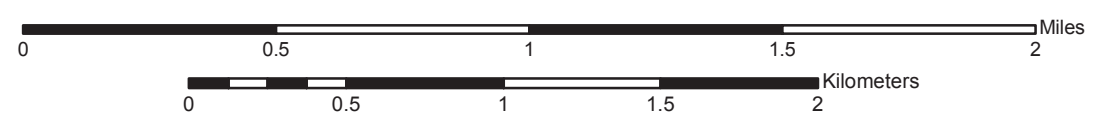
- WILDERNESS**
 - Wilderness Legal Boundary Description
 - Designated BLM Wilderness
 - Land that would become wilderness if acquired by BLM
 - BLM proposes as non-wilderness if acquired
 - SURFACE MANAGEMENT AGENCY**
 - Bureau of Land Management
 - State of Idaho
 - Private
 - OTHER**
 - Improved Road
 - Primitive Road
- See Index Map for full detailed legend.



**LITTLE JACKS CREEK
WILDERNESS**



Map 2 of 4
U.S. Bureau of Land Management
Boise District, Idaho
Omnibus Public Land Management Act of 2009
Public Law 111-114



North American Datum of 1983
Universal Transverse Mercator Zone 11
Map date: August 31, 2011