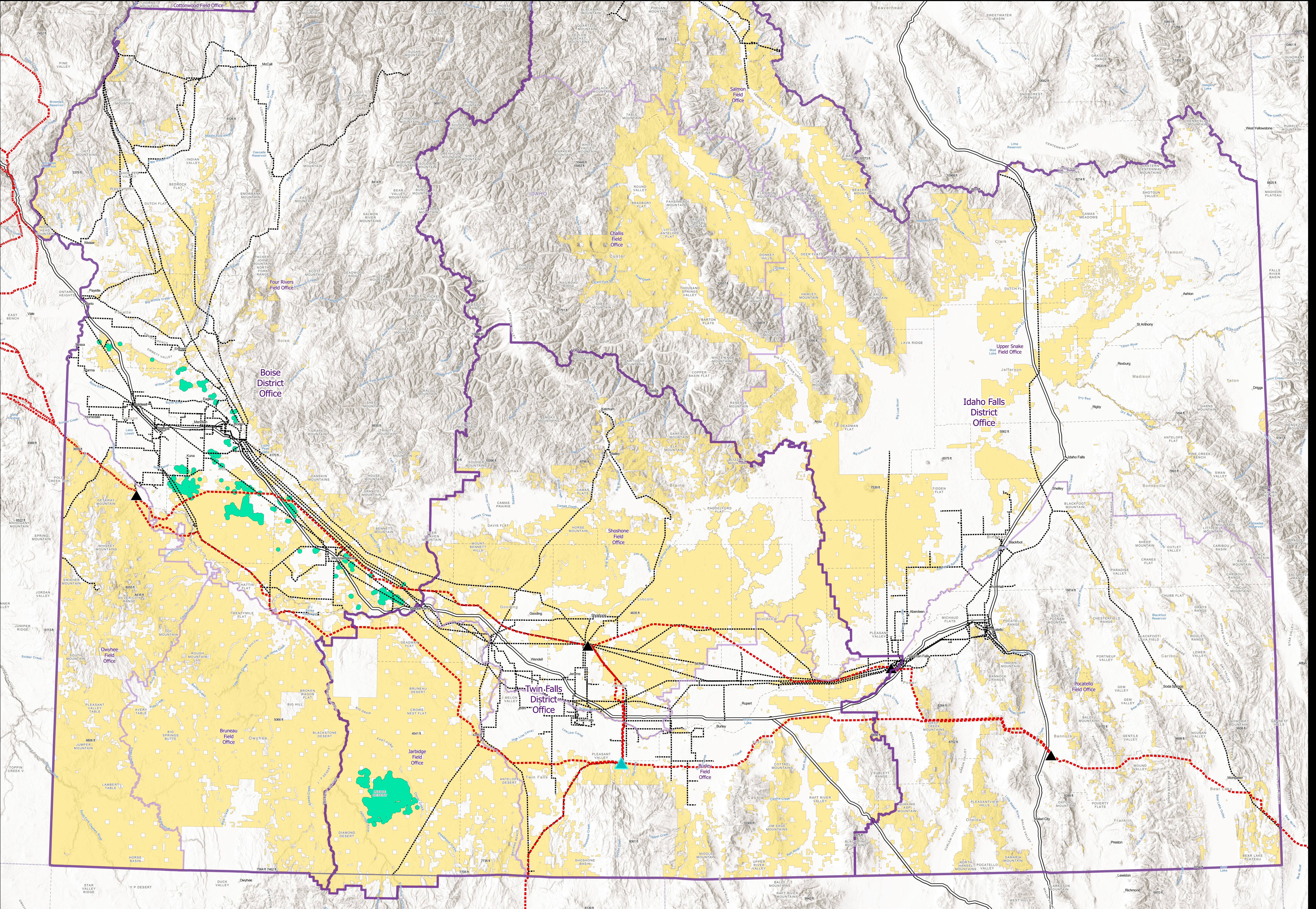
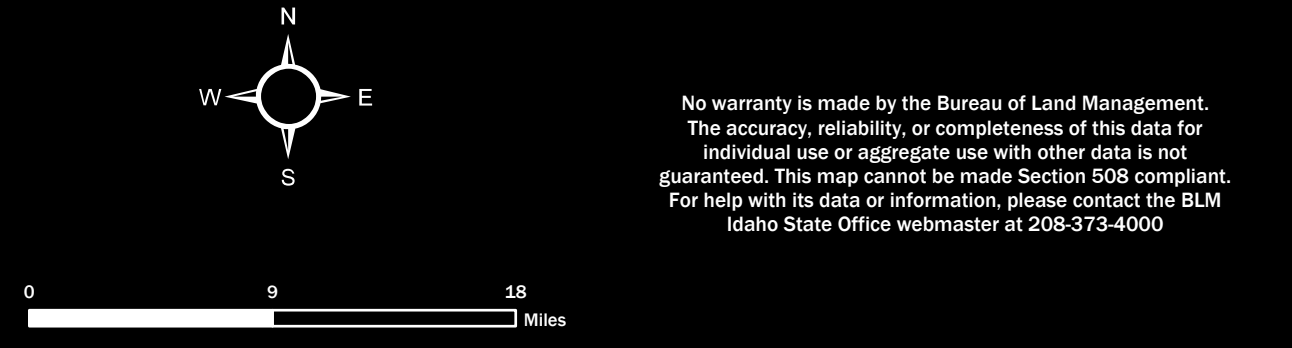




# FEDERALLY LISTED SPECIAL STATUS PLANTS OVERVIEW FOR SOUTHERN IDAHO

## BLM IDAHO

- slickspot peppergrass (LEPA17) Occupied Habitat
- Existing Transmission Lines
- - - Transmission Lines Approved for Construction
- △ Substations
- Bureau of Land Management
- BLM District Office Boundaries
- BLM Field Office Boundaries
- Interstate Routes



No warranty is made by the Bureau of Land Management. The accuracy, reliability, or completeness of this data for individual use or aggregate use with other data is not guaranteed. This map cannot be used to determine title. For help with this data or information, please contact the BLM Boise District Office website at 208-377-4000.