

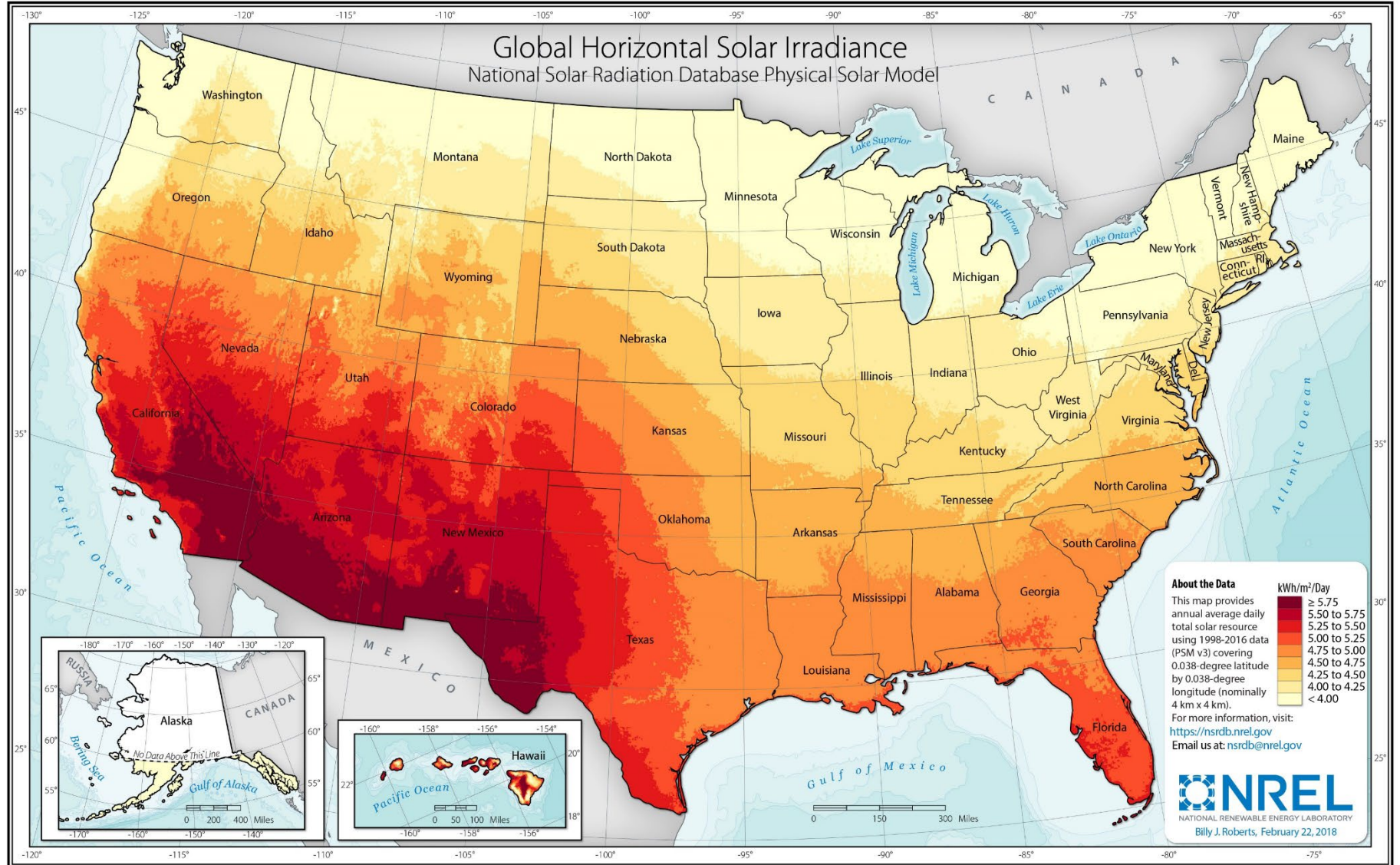


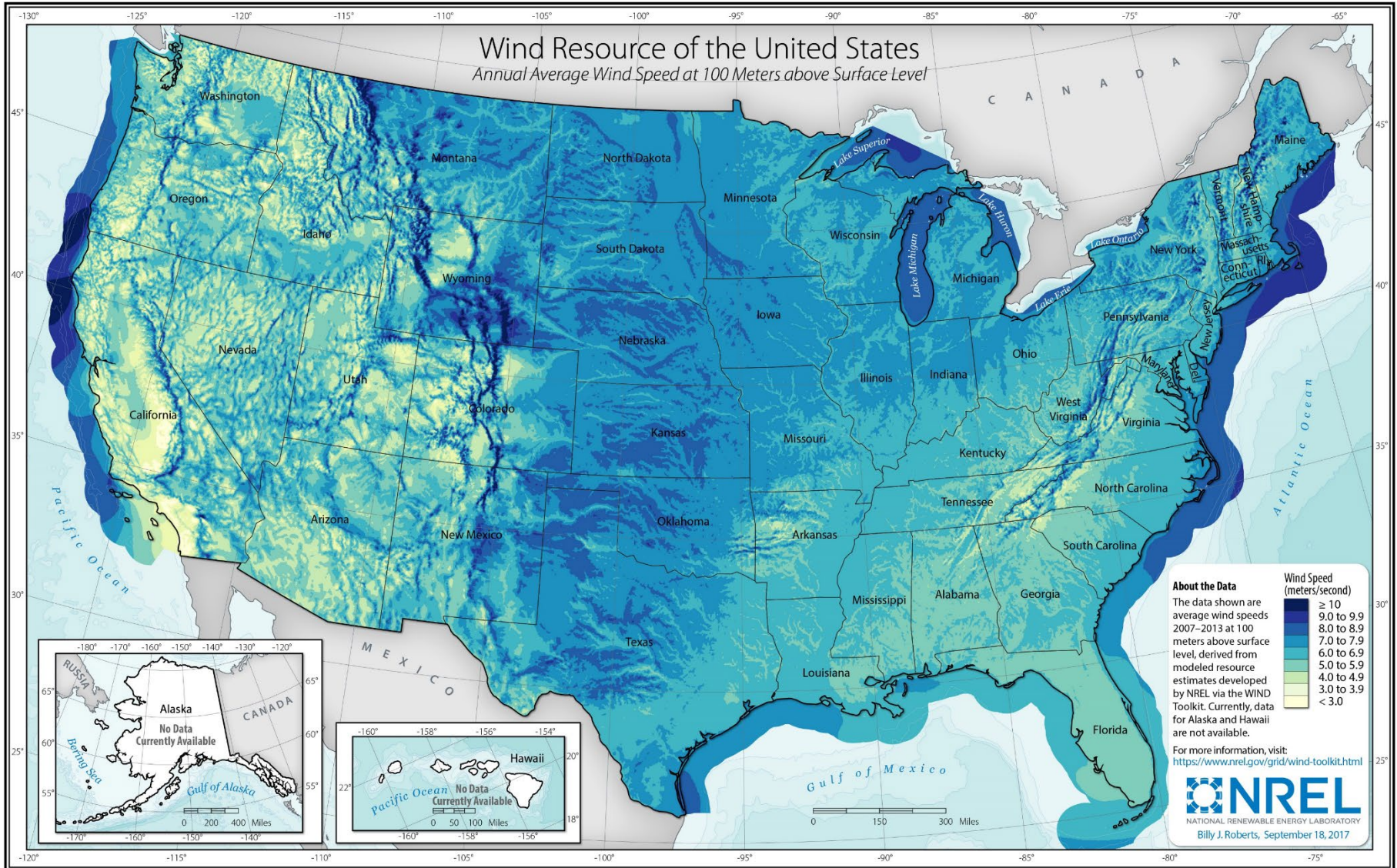
U.S. Department of the Interior
Bureau of Land Management

Renewable Energy on BLM Idaho-Managed Public Lands

The Bureau of Land Management's mission is to sustain the health, diversity, and productivity of public lands for the use and enjoyment of present and future generations.





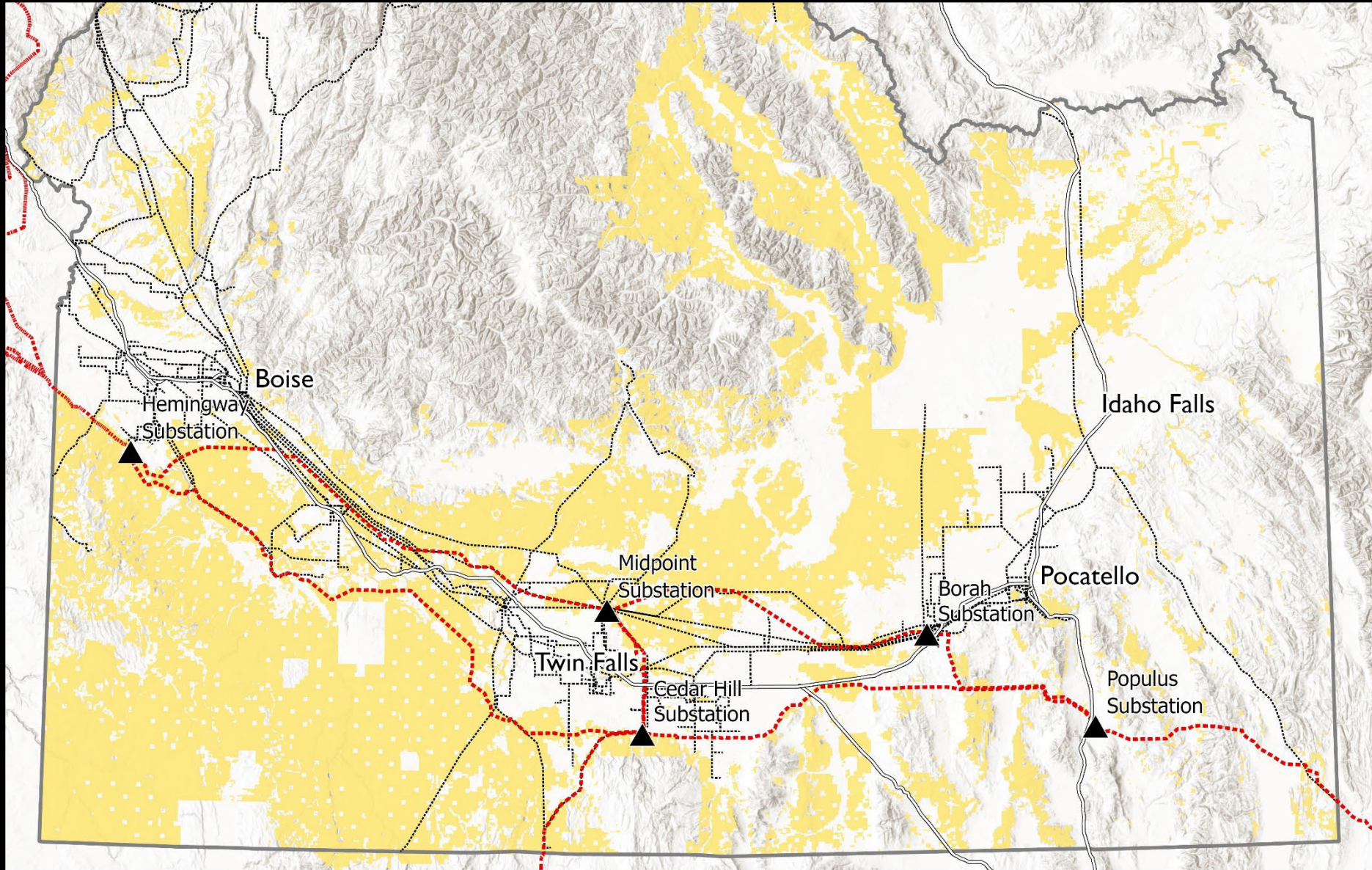




- Bureau of Land Management
- Interstate Routes
- Existing Transmission Lines

- Transmission Lines Approved for Construction
- Substations

No warranty is made by the Bureau of Land Management. The accuracy, reliability, or completeness of this data for individual use or aggregate use with other data is not guaranteed. This map cannot be made Section 508 compliant. For help with its data or information, please contact the BLM Idaho State Office webmaster at 208-373-4000





Backdrop

The BLM's core mission, as defined by the Federal Land Policy and Management Act of 1976 (FLPMA), is one of managing our public lands under the principles of multiple use and sustained yield.

Title V of FLPMA states that the Secretary is authorized to grant, issue, or renew rights-of-way for systems for generation, transmission, and distribution of electric energy.



BLM Idaho Renewable Energy Strategy

Key objectives:

- **Consistency / Efficiency:** Enhance consistency and workflow efficiency in application processing
 - For both BLM and project applicants
- **Prioritization:** Inform the framework for prioritizing the order in which applications are processed
- **Communication:** Facilitate communications and engagement with partners and the public



Wind/Solar Application Process

Stage 1:
Pre-application

Stage 2: Application

Early engagement



Stage 3: Pre-NEPA
Assessment

Scoping period
Public comment period



Stage 4: NEPA &
Range of Alternatives



Renewable Energy Factors Analysis Report

Examples – *not comprehensive*:

- Conformance with land use plan decisions
- Cultural and archaeological resources
- Tribal/Federal/State/local coordination and consideration of additional permit or regulatory requirements
- Impacts to grazing, recreation, and other authorized uses
- Impacts to fish and wildlife, habitats, and migration corridors
- Water usage and impacts
- Access to transmission and interconnection facilities



Renewable Energy Factors Analysis Report

We developed a structured method for the applicant to document the requirement to:

“Address all known potential resource conflicts with sensitive resources and values, including special designations or protections, and include applicant-proposed measures to avoid, minimize, and compensate for such resource conflicts, if any”

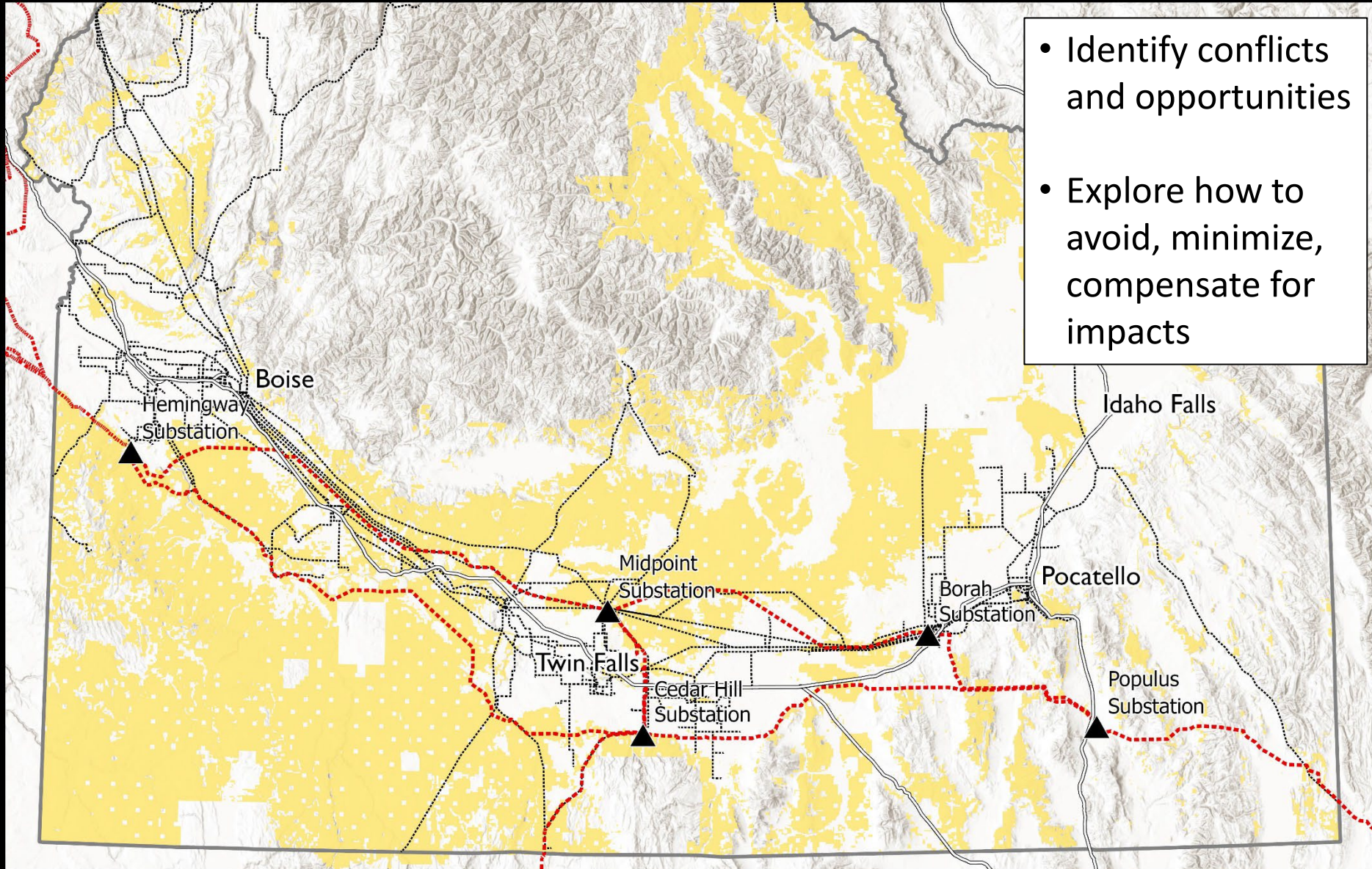
43 CFR 2804.12(b)(2)



- Bureau of Land Management
- Interstate Routes
- Existing Transmission Lines

- Transmission Lines Approved for Construction
- Substations




No warranty is made by the Bureau of Land Management. The accuracy, reliability, or completeness of this data for individual use or aggregate use with other data is not guaranteed. This map cannot be made Section 508 compliant. For help with its data or information, please contact the BLM Idaho State Office webmaster at 208-373-4000



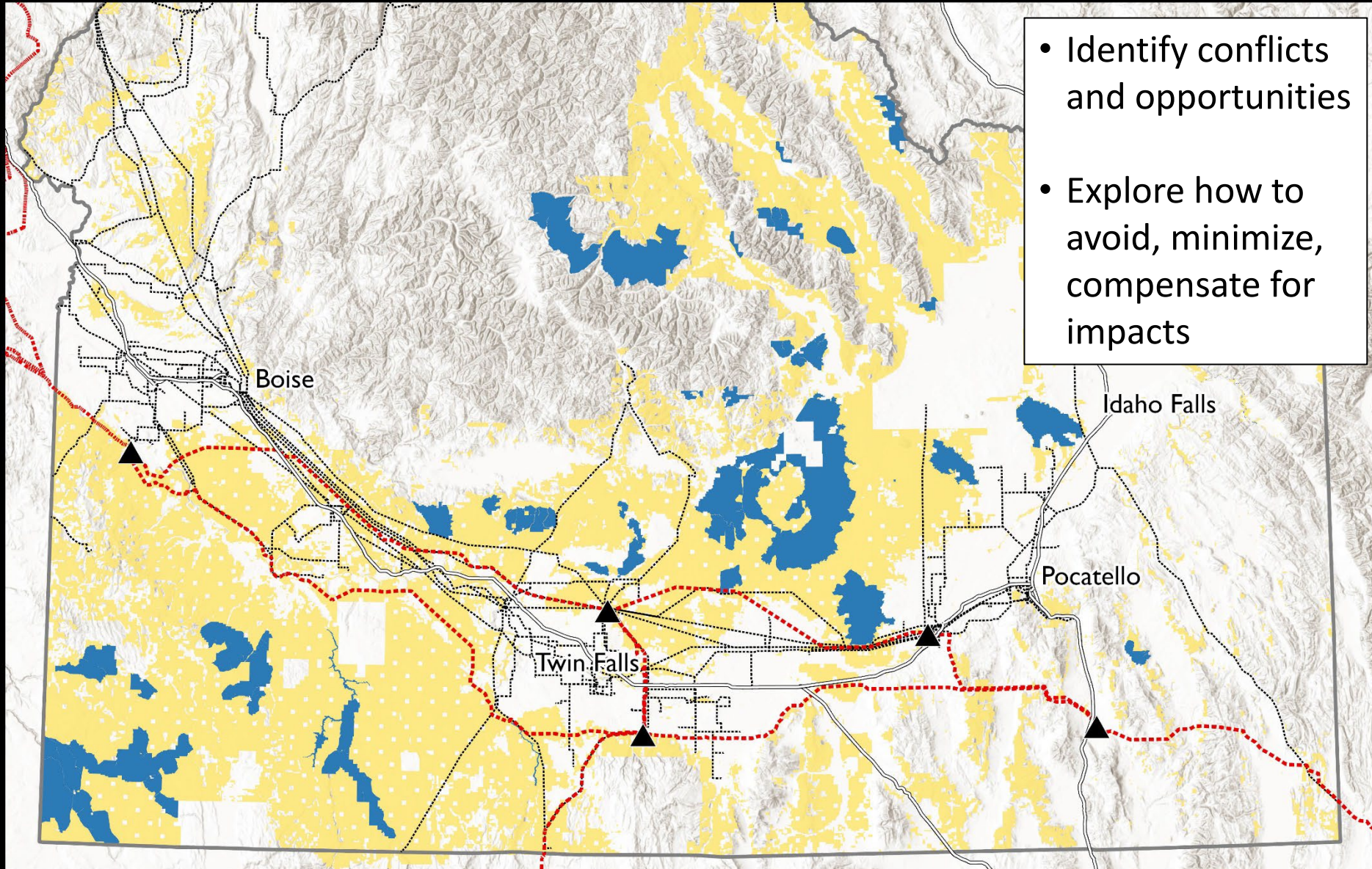
- Identify conflicts and opportunities
- Explore how to avoid, minimize, compensate for impacts



 Bureau of Land Management
 Interstate Routes
 Existing Transmission Lines

 Transmission Lines Approved for Construction
 Substations
 Wilderness and Wilderness Study Areas

No warranty is made by the Bureau of Land Management. The accuracy, reliability, or completeness of this data for individual use or aggregate use with other data is not guaranteed. This map cannot be made Section 508 compliant. For help with its data or information, please contact the BLM Idaho State Office webmaster at 208-373-4000

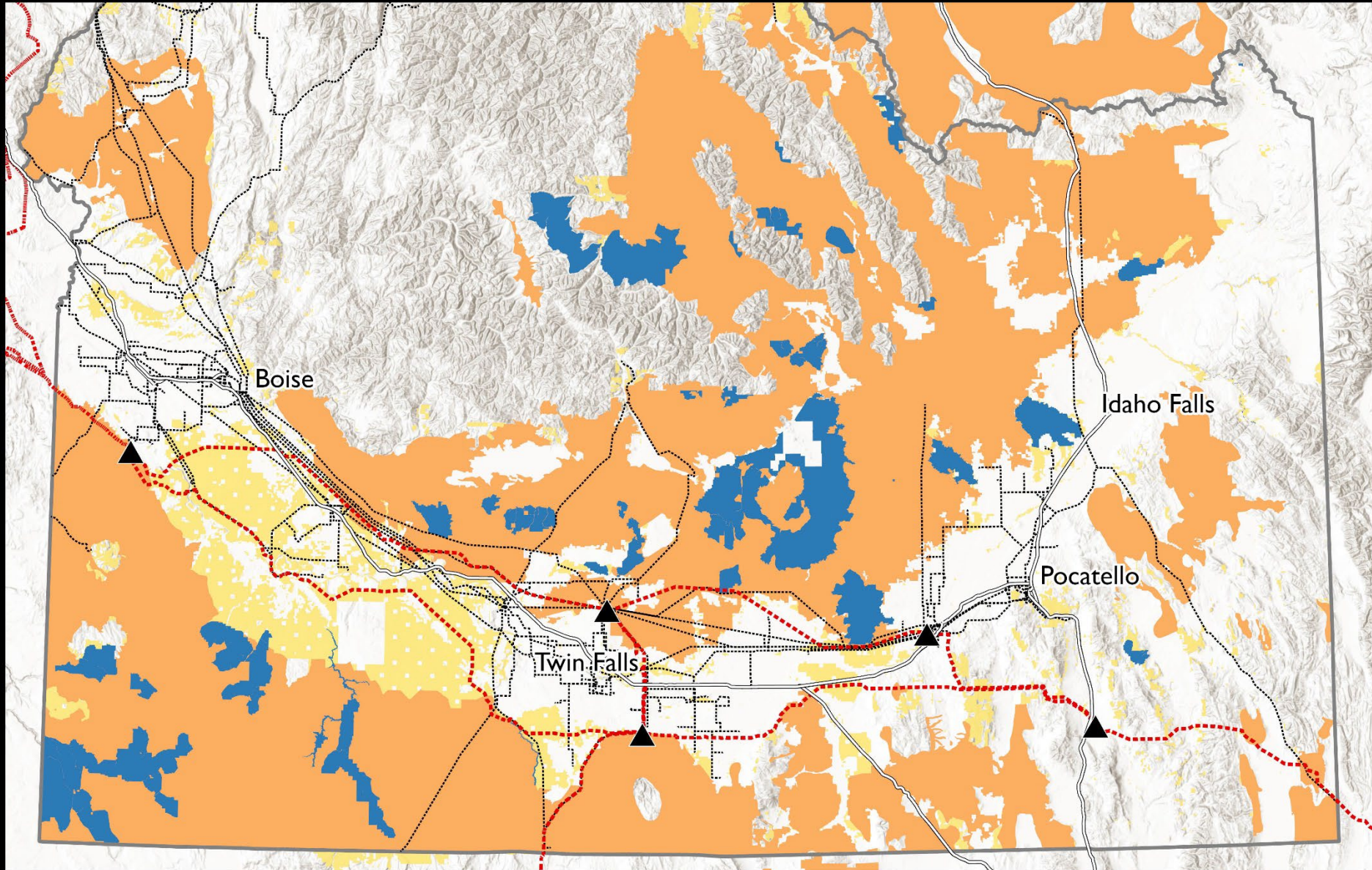


- Identify conflicts and opportunities
- Explore how to avoid, minimize, compensate for impacts



- Bureau of Land Management
- Interstate Routes
- Existing Transmission Lines
- Transmission Lines Approved for Construction
- Substations
- Sage-Grouse Habitat
- Wilderness and Wilderness Study Areas

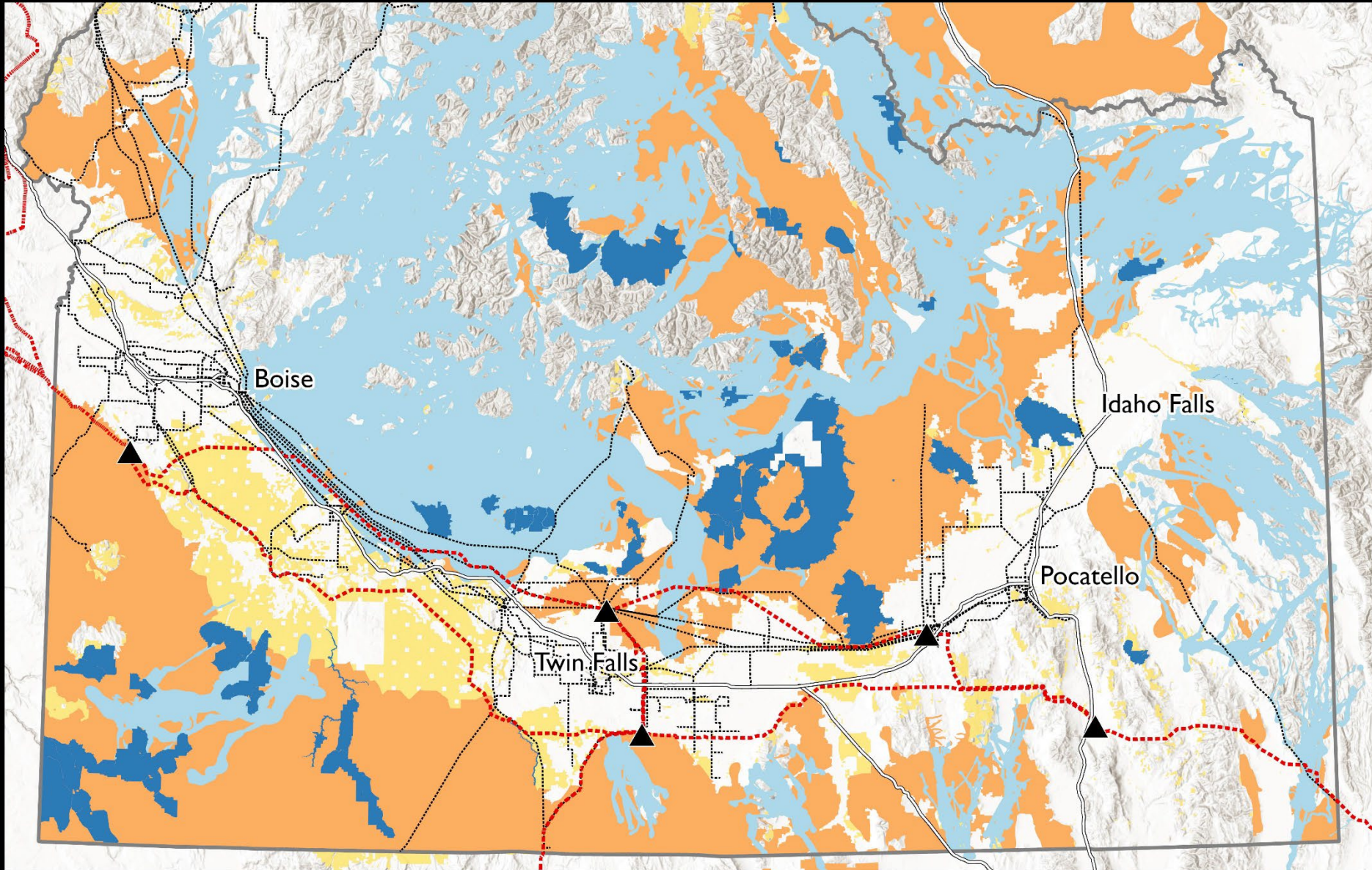
No warranty is made by the Bureau of Land Management. The accuracy, reliability, or completeness of this data for individual use or aggregate use with other data is not guaranteed. This map cannot be made Section 508 compliant. For help with its data or information, please contact the BLM Idaho State Office webmaster at 208-373-4000





- Bureau of Land Management
- Interstate Routes
- Existing Transmission Lines
- Transmission Lines Approved for Construction
- Substations
- Sage-Grouse Habitat
- Big Game Migration Routes
- Wilderness and Wilderness Study Areas

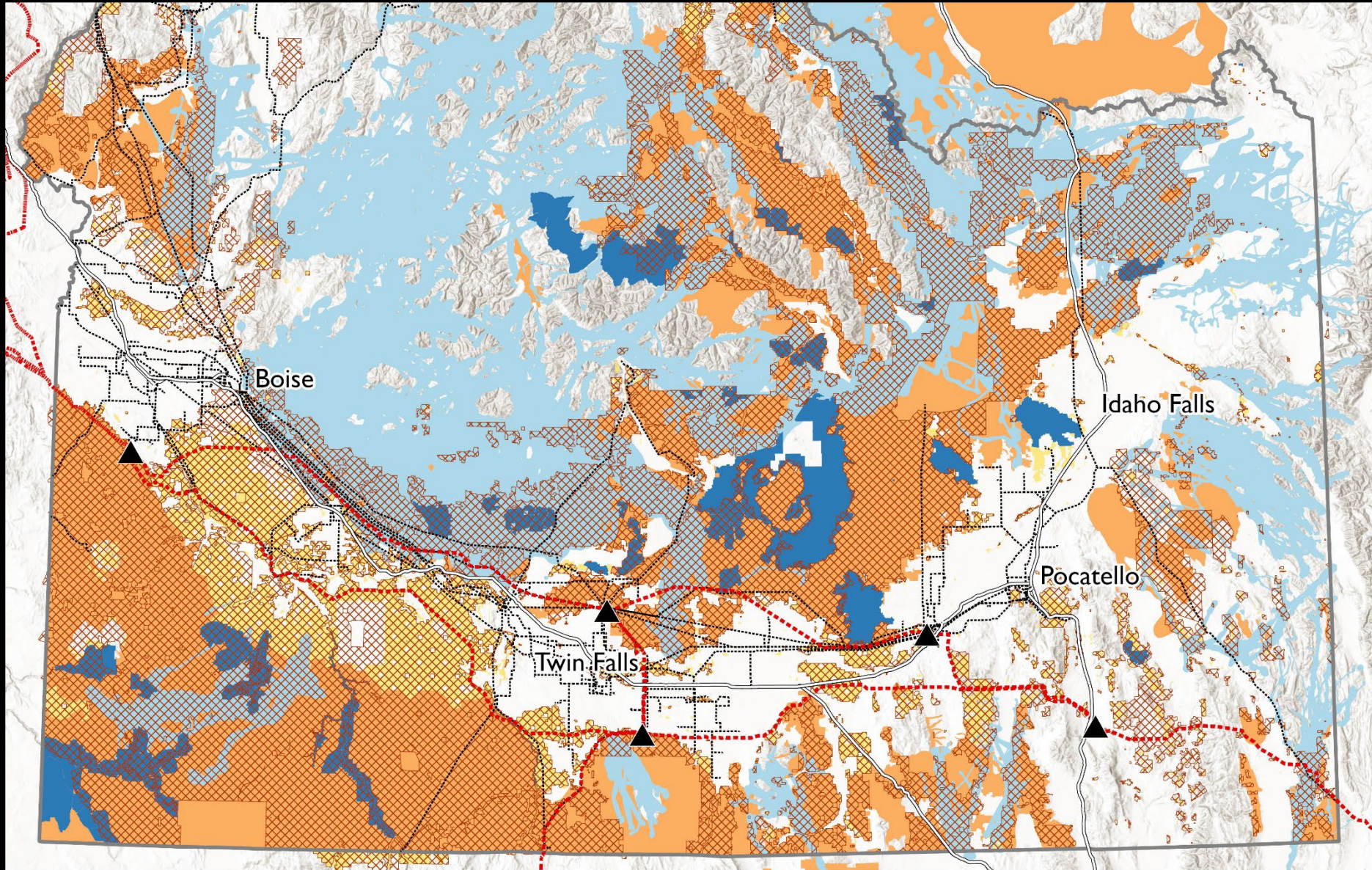
No warranty is made by the Bureau of Land Management. The accuracy, reliability, or completeness of this data for individual use or aggregate use with other data is not guaranteed. This map cannot be made Section 508 compliant. For help with its data or information, please contact the BLM Idaho State Office webmaster at 208-373-4000





- Bureau of Land Management
- Sage-Grouse Habitat
- Big Game Migration Routes
- Wilderness and Wilderness Study Areas
- Interstate Routes
- Grazing Allotments
- Existing Transmission Lines
- Transmission Lines Approved for Construction
- Substations

No warranty is made by the Bureau of Land Management. The accuracy, reliability, or completeness of this data for individual use or aggregate use with other data is not guaranteed. This map cannot be made Section 508 compliant. For help with its data or information, please contact the BLM Idaho State Office webmaster at 208-373-4000





BLM Idaho Renewable Energy Strategy

Questions to consider as you provide your feedback:

- What resource values are you concerned about?
- Are there locations/regions that may be desirable for renewable energy siting? Where? Why?
- Are there locations/regions that are of concern? Where? Why?
- Is there anything else BLM should be considering in this process?