



**Utah Resource Advisory Council**  
**Meeting Minutes**  
**January 18, 2023**  
Virtual Meeting

**Meeting Attendees**

- **Utah Resource Advisory Council members:** Simeon Weston, William Cox, Clifton Koontz, Jay Tanner, Cameron Cuch, Kenneth Adams, Patrick Hearty, Joan Hayes, Richard Draney, Neal Clark, Michael Worthen, Ryan Benally, Tyler Thompson, Dean Draper
- **BLM employees:** Lance Porter, Angela Hawkins, Nicollee Gaddis-Wyatt, Harry Barber, Gus Warr, Christina Price, Matt Preston, Christie Judd, Javonne Goodman, Rachel Wootton, Emmy Ellison (minutes)
- **USDA Forest Service employees:** Dave Whittekiend, Lorie Price, Renee Flanagan, Joanna Wilson
- **Members of the public:** Brian Maffly, Charles Rosier, Cheryl Butler, Cindy Bulloch, David Ashby, Evan DeHamer, Janell Howard, Joanna Wilson, Juan Barrientez, Kyle Nelson, Mark Belles, Mike Hyde, Patrick McKay, Sedona Berman, Steve Brown, Tony Mancuso, HD Sanderson, Larry Ellertson

**Welcome and Introductions**

- The State Director was unable to attend and delegated Lance Porter to be the Designated Federal Officer for this meeting.
- New RAC members were welcomed and introduced.

**Green River District (GRD) Planning**

- GRD encompasses two field offices (Vernal and Price), working toward being fully staffed, implementing multiple-use mission, managing national conservation lands within district. Working on 5-year Resource Management Plan (RMP) review. Overview of Land Use Plan Amendments at San Rafael Swell Recreation Area and McCoy Flats Non-motorized Trail System. Overview of Price and Vernal field office projects and NEPA/planning.

**BLM Utah Priorities**

- Planning for monument management for Bears Ears and Grand Staircase-Escalante; Dingell Act implementation for San Rafael Swell Recreation Area and McCoy Flats plan



amendments; State land exchange appraisal, realty and NEPA process; travel management planning, Renewable energy projects including solar, wind and transmission; responding to increased recreation use on public lands by building fee programs; moving toward electronic permit/reservation/fee systems; put into action strategic fuels management and vegetation projects; implementation of the Inflation Reduction Act and Bipartisan Infrastructure Law (rights-of-way, oil and gas lease sales, orphaned wells, abandoned mine actions).

- Planning efforts include ongoing Greater Sage Grouse and Gunnison Sage Grouse projects and supporting responsible development of renewable energy on public lands.
- Rulemaking considerations include grazing regulations, Wild Horse and Burro regulations, the broadband rule for updating regulations for the construction and operation of broadband infrastructure on public lands (public comment period open through Jan. 23, 2023) and the proposed Waste Prevention, Production Subject to Royalties, and Resource Conservation rule (Public comment period open until Jan. 30, 2023).
- Question from councilmember on whether any big change has occurred in how BLM handles Wild Horse and Burro program. Response from BLM was that no big changes have been seen. New rule would add management tools that are being contemplated and will have a future public process and have not been defined yet.

### **USDA Forest Service Recreation Fee Proposal**

- Slide show presentation by Dave Whittekiend and Renee Flanagan
- Question from councilmember regarding the volunteer pass. Response from Forest Service was that volunteer numbers on that forest are very high and new volunteer coordinators have been hired to assist.
- Councilmember question about equestrian use. Response was that equestrian use is high and there are dedicated equestrian areas and successful partnerships with equestrian organizations.
- Councilmember question about increased visitation. Response was that for the Uinta-Wasatch-Cache National Forest, it has steadily increased approximately 4-6% per year with the pandemic being the highest. Most dramatic increase has been in the last 5 years.
- Discussion of how increased fees would affect current gap in expenses. Goals are to leverage against grant matching dollars, apply fees on the ground and increase amount allowed for projects.
- Councilmember question about motivation behind areas eliminated. Response was that it was site dependent and reasons were varied but included public feedback, proximity to concessionaires and overall philosophy.



- Discussion of how amenities are related to fees. It is largely site specific but generally increased amenities will have increased fees.
- Councilmember question about what the Forest Service is looking for from the Council and what weight it will carry. Response was that the Council will vote for or against the proposal which will determine the outcome categorically.
- Discussion of overwhelming increase in use as the top challenge of managing the forest. Primary public concerns are roads and toilets. Public safety/law enforcement, maintenance at trailheads and other high-use areas, funding and maintaining an adequate workforce are also critical. Goal is to allow the public to have a great recreation experience.
- Councilmember question about the high number of public comments opposing the fee increases and how that affects reasoning. Response was that public comments tend towards negative as a baseline and it is important to look at trends and particularly numbers that are outside the trends for focused content analysis.
- Discussion of massive increase in use at Henry's Fork and Cascade Springs.
- Discussion of Theater-in-the-Pines amphitheater renovations and amenities upgrade.
- Councilmember question about recreation opportunities for low-income families and if cabins were ADA compliant. Response was that opportunities currently exist for groups to get free permits, 40% of sites are free and the Forest Service does not maintain a separate, low-income pass structure. Cabin accessibility is dependent on the structure as many are historic sites. The recreation.gov site does indicate which cabins are accessible.
- Councilmember question about formal data backing up the proposal. The response was that the 262-page report was sent to the BLM in December, but the RAC mistakenly did not receive it. It was stated that voting without the information from the report will be difficult as the RAC needs time to properly review and analyze the data. BLM promised to get the report to the RAC immediately and the RAC said they'd decide after public comment if the vote should be pushed to the next meeting.

### **Dispersed Camping – Paria River District**

- Slide show presentation by Harry Barber
- Councilmember question about designated dispersed camping like in Moab. BLM responded that they are looking into that at Tin Can Flat and Barracks.
- Councilmember asked if BLM is seeing an increase in responsible recreation from the public. The response included an example of BLM holding educational meetings with SRP user groups and seeing responsible behavior afterwards.
- Discussion of increased visitation and the types of uses seen for dispersed camping in the area.



- Councilmember question about how BLM responds when someone on social media with followers post a location that then sees increased popularity. The response was that management increases depending on level of use and includes installing temporary restrooms, increased trash collection and signage and parking lot expansion.
- Discussion of the newly passed regulations requiring all Utah OHV users to complete an educational course prior to operating on public land.

## **Break until 11am**

### **Dispersed Camping – Canyon Country District**

- Slide show presentation by Nicollee Gaddis-Wyatt
- Councilmember question about likely candidates for dispersed camping. BLM response was that there are two in the Moab area: one near Labyrinth area and one behind Arches. Also, the Yellow Circle area, an area near Belly of the Dragon and an area by Hole-in-the-Rock Road.
- Councilmember question about how to handle 3<sup>rd</sup> party/social media sites posting incorrect information. The response was that BLM does often contact the app developer to request correct information be added with varying levels of cooperation.
- Councilmember question about progress on designating dispersed camping in Moab and Monticello. Response was that staff is pinpointing hardened sites and making maps. The EA for Labyrinth Gemini area will go out for public comment in next couple of months, one this year and another at the end of the year potentially. TMP is priority.
- Discussion of Ambassador Program at Indian Creek Corridor.
- Councilmember comment to use the designated dispersed camping model from Crested Butte, CO as vision.

### **Canyon Country District – Bears Ears National Monument**

- Slide show presentation by Nicollee Gaddis-Wyatt
- Councilmember question about tribal consensus in the past. Response that BLM is working regularly with the Bears Ears Commission.
- Councilmember question regarding update on interim management of both monuments. Response was no update aside from following guidance on E-Planning site.

### **Canyon Country District – Grand Staircase-Escalante National Monument**

- Slide show presentation by Harry Barber
- Clarification of the difference between No Action Alternative and Current Management Alternative.



- Councilmember question about what determined the list of stakeholders, specifically the NGOs. BLM response was that it is generally folks that have expressed interest. Request from councilmember to list all.
- Councilmember question about any new issues that have come up since the last ongoing planning discussion including research, comments, inventories, etc. Response was that one issue is the community vocalization in support of motorized use. Though not everyone in the community supports motorized use, it does change how BLM approaches protecting objects and values.
- Quick check-in to see if anyone had not received the email with the previously discussed Forest Service report that had been sent following the discussion. No one spoke up.

### **Break for lunch until 1pm**

### **Public Comments**

- Mike Hyde – asked where BLM stands on the habitat connectivity effort following new policy. BLM response was that it is a priority and BLM is working closely with state agencies to coordinate appropriately. Councilmember responded that Utah DNR has high-functioning relationship with BLM and maintains an ongoing partnership that includes regular discussions about restoration, management, etc.
- Patrick McKay – asked for elaboration on how different projects relate to each other; whether dispersed camping is being considered in the Labyrinth Rims TMP and if road closures are being considered in the Labyrinth Rims camping project. Suggestion that whatever plan is implemented first doesn't affect the other. Also asked if thought is being given to correcting wilderness area boundary errors like in the Devil's Racetrack Trail area. BLM response to first question was that the TMP will allow access to dispersed campsites and they will ensure that closures don't lead to sites. Paying attention to both and will pass that suggestion on to the field manager. BLM response to the second question was that the agency has some discretion in administrative changes to boundaries and that they are taking a meticulous and well-thought-out approach with those changes and will continue to do so.

### **Advisory Council Discussion and Motions**

- Discussion on tabling fee proposal vote until next meeting. Councilmembers requested additional information to supplement the fee proposal report and the Forest Service requested that any further RAC needs be communicated to them so they can provide all necessary information.
- Motion to table the vote on the Uinta-Wasatch-Cache fee proposal until the next regularly scheduled meeting on May 21<sup>st</sup>, 2023. Full quorum vote: Yes 11, No 3. Motion passed.



- Forest Service requested clarification on how the RAC wants newly requested information presented.
- Single points of contact were determined for Forest Service and RAC for additional questions and information.
- Public comment period closed.

### **Wild Horse and Burro Program**

- Slide show presentation by Gus Warr
- Councilmember question about how extensively Gonacon use is. BLM response was that it is currently being administered at gathers and is also being used in Wyoming and Nevada for management.
- Councilmember question about how close to capacity BLM's current holding facilities are. Response was that BLM is currently 8-10 thousand animals from being at capacity and that challenges related to appropriate care of the animals are biosecurity and annual contracts.
  - Nationwide: Total Capacity of Off-Range Corrals and Off-Range Pastures: 82,778 animals
    - BLM currently holding: 64,039
    - Available Capacity Nationwide: 18,739
  - Utah BLM Total Capacity of Off-Range Corrals and Off-Range Pastures: 6,650 animals
    - Animals currently held in Utah: 4,927
    - Available Capacity in Utah: 1,723
- Councilmember question about if BLM came to point of no off-range capacity, would the AML on-range be surpassed. Response was yes and one is coming up. Must handle emergency care differently, use short-term contracting. Population on range will go up if BLM is unable to place animals in viable corrals.
- Discussion of adoptions. The Delta holding facility does not require an adoption event as you can walk in and leave with an adoption the same day. Appointments are encouraged but it is publicly accessible anytime. Higher quality animals are funneled to the Delta facility. The private facilities require adoption events.
- Discussion of Owyhee horses. Popular herd in Nevada was gathered a year ago, won't see more for 2-3 years.
- Councilmember question about whether anything else can be done with the 64k warehoused horses. Response was that it is a challenge to balance funding with restrictive language in the annual appropriations bill. Without funding, range and resources take the brunt of the impact with increasing populations.

### **Lands, Realty and Renewable Projects**



- Slide show presentation by Christina Price
- Councilmember question about uptick in mining claims and if there is a breakdown of specific pursuits like certain minerals, etc. BLM response was that lithium for batteries is driver and BLM can get more data to better answer the question.
- Councilmember comments about addressing inappropriate activity due to social media.
- Councilmember request for update on Sheep Bridge Nature Trail. Response was that BLM has not received funding yet for that and is looking at 2024 possibly.

### **Travel Management Update**

- Slide show presentation by Matt Preston
- Councilmember question about 9-mile Canyon update. BLM response that scoping should be initiated this year, cultural surveys are done, working on Endangered Species Act compliance and route-by-route evaluation. Focus is on Dino North.
- Discussion of application to finish paving the last section on Wells Draw. Currently in scoping/public comments and will be looking at the NEPA process and analyzing impacts. Goal is to protect the site from damage from vehicle dust, graffiti and increased use.
- Councilmember request to explain San Rafael Desert TMP litigation. Response was that it was issued in 2020, was litigated and a settlement was reached requiring BLM to re-examine some of the routes. Some changes were made and those decisions were recently released and litigated again.
- Councilmember question about TMP timelines. Response was that Labyrinth Rims public comments response process has been slow and will have decision in near future. San Rafael Swell and Richfield will have draft EAs out. Dino North is farther along. Henry Mountains and San Rafael Swell are priorities. Swell was set back because of additional surveys and Henry Mountains will have scoping initiated.
- Councilmember question about short takeoff and landings for aircraft in non-motorized areas and if BLM is discussing it. Response was yes and that regulations need to be consistently understood. It is not allowed in closed areas and can be added to TMPs. Carefully figuring out how to handle it.
- Councilmember question about who is responsible for maintaining backcountry landing strips. Response was that it depends on who owns them. If right-of-way is issued, the holder has the right to construct, maintain, operate and terminate.
- Councilmember question about who maintains specific roads. Response was that it depends and you can go to a local office to see about rights-of-way or agreements.

**15-minute break**

### **Dingell Act Implementation**



- Slide show presentation by Lance Porter
- Councilmember question about how to coordinate the timing of wild and scenic river designations with other plans. BLM response was that two field offices are working together on two management plans and will continue work through the plan amendment and the scoping report will be released in the spring.
- It was noted that the Dingell Act consolidates SITLA lands in land exchanges.

**Final Discussions**

- BLM showed new members the Utah RAC website and thanked the members and public for joining the virtual meeting. BLM requested general feedback on the meeting and thanked RAC members for volunteering their time. Next meeting is May 17 and 18 in Cedar City, UT and will include a field tour.
- Discussion of upcoming RAC vacancies.
- Discussion of next agenda. A few items will be added to what was published in the Federal Register Notice. One agenda request was a presentation on grazing rules and regulations status. It was noted that under advisory council rules, minutes do not need to be voted on as they were approved by the chair.
- Discussion of circulating and approving minutes as a group.

Motion to adjourn the meeting. Motion seconded. Meeting adjourned at 3:35 p.m.

Approved by:  Tyler Thompson  
RAC Chair  
2-21-2023

**Agenda, Federal Register Notice and Presentation Slides**

**Utah Resource Advisory Council  
Meeting Agenda  
Jan. 18, 2023, Green River District Office (Virtual)**

<b>TIME</b>	<b>TOPIC</b>	<b>PRESENTER</b>
8 a.m.	Welcome and introductions	<i>Tyler Thompson</i> RAC Chairperson <i>Lance Porter</i> , Green River District Manager
8:15 a.m.	BLM Utah priorities  Purpose: Provide an updated national context and statewide perspective	<i>Lance Porter</i> , Green River District Manager
8:30 a.m.	Green River District planning  Purpose: Provide an update on current District planning efforts	<i>Lance Porter</i> , Green River District Manager





9 a.m.	Recreation fee proposals  Purpose: To review recreation fee proposals by various BLM & USDA Forest Service offices and make recommendations on how to move forward with implementation	<i>Lorie Price</i> , U.S. Department of Agriculture Forest Service Recreation Program Manager <i>TBD</i> , Fee Proponent
10:30 a.m.	Break	
10:45 a.m.	Recreation dispersed camping  Purpose: Highlight trends and issues around the state and invite input	<i>Harry Barber</i> , Paria River District Manager <i>Nicollee Gaddis-Wyatt</i> , Canyon Country District Manager
11:15 a.m.	Grand Staircase-Escalante & Bears Ears National Monuments  Purpose: Provide an update and overview, invite input moving forward	<i>Nicollee Gaddis-Wyatt</i> , Canyon Country District Manager <i>Harry Barber</i> , Paria River District Manager
12 p.m.	Lunch	
1 p.m.	Public Comment Period	
1:30 p.m.	Wild horse and burro program  Purpose: Provide an update on the wild horse and burro program	<i>Gus Warr</i> , Utah Wild Horse and Burro Program Lead
2 p.m.	Lands, Realty and Renewable projects  Purpose: Provide updates on lands, Realty and Renewable projects statewide	<i>Christina Price</i> , Deputy State Director, Lands and Minerals
2:45 p.m.	Break	
3 p.m.	Travel Management Update	<i>Matt Preston</i> , Deputy State Director
3:30 p.m.	Dingell Act implementation  Purpose: Provide an update on planning and project efforts, as well as communication with partners	<i>Lance Porter</i> , Green River District Manager
4 p.m.	Wrap-up discussions and finalize action items	RAC members
4:30 p.m.	Adjourn	

**Presentation Slides**



U.S. Department of the Interior  
Bureau of Land Management



U.S. Department of the Interior  
Bureau of Land Management

# This meeting will begin shortly



Photo by Bob Stevenson



U.S. Department of the Interior  
Bureau of Land Management

# BLM Utah Resource Advisory Council Meeting

Wednesday, Jan. 18, 2023



Photo by Bob Stevenson



# Attendees see:

A screenshot of a Zoom meeting interface. At the top, a green bar indicates "You are viewing Rachel Wootton's screen" and a "View Options" dropdown. The main content area displays a presentation slide with the Bureau of Land Management logo and text: "U.S. Department of the Interior Bureau of Land Management", "Public meetings &amp; going online!", and a photograph of red cholla cacti with the caption "Photo by Bob Stevenson". On the right side, a video thumbnail shows a participant, Rachel Wootton, with her name displayed below. The bottom toolbar includes "Audio Settings", "Chat", "Raise Hand", "Q&amp;A", and a red "Leave" button.



**Need technical support during this meeting?**

**Contact Rachel at:**

**Text - 385-235-4364**

**Email - [rwootton@blm.gov](mailto:rwootton@blm.gov)**

**Or Javonne at:**

**Text-385-395-5330**

**Email- [jgoodman@blm.gov](mailto:jgoodman@blm.gov)**



# BLM Utah 2023 Priorities

- Leading People
- Leading Change
- Results-Driven Work
- Business Acumen
- Building Coalitions and Relationships





**The Bureau of Land  
Management Utah Resource  
Advisory Council Meeting will  
resume following this  
15-minute break.**





**The Bureau of Land  
Management Utah Resource  
Advisory Council Meeting is  
paused for lunch.**

**The meeting will resume at  
1 p.m. for public comment**



# Public Comments Procedure

- We will begin with in-person public comments first then move to virtual attendees.
- Attendees joining by computer can select raise hand at the bottom of their screen.
  - Attendees joining by phone can press \*9 to raise their hand and \*6 to unmute their microphone.
- Attendees will have three minutes to comment.



# Public Comment

**3:00**



U.S. Department of the Interior  
Bureau of Land Management

**Thank you for joining us!**



Raven Chavez



U.S. Department of the Interior  
Bureau of Land Management

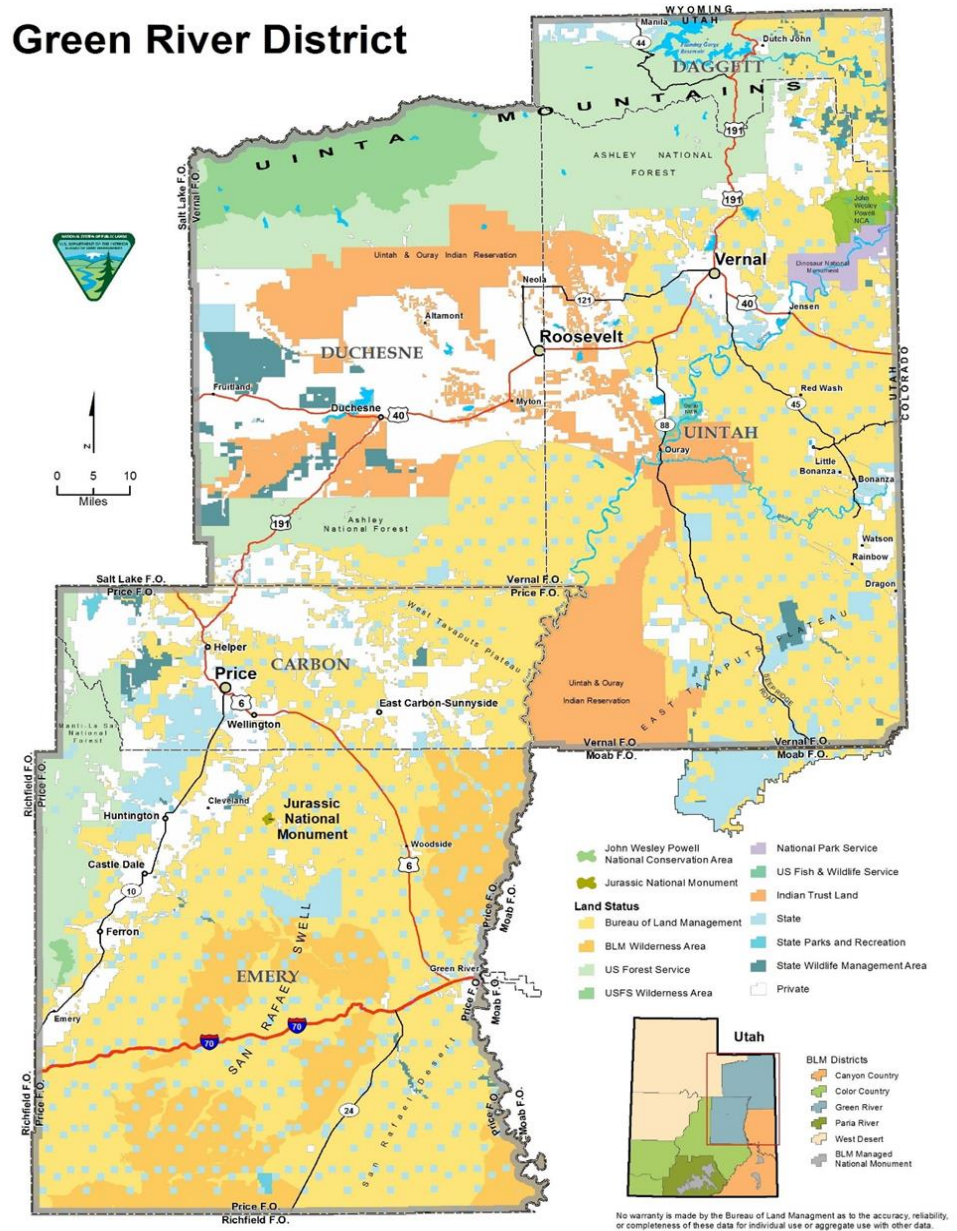
# **Green River District**

## **Utah Resource Advisory Council Jan. 18, 2023, Meeting**





## Green River District



- Two field offices- Vernal & Price
- 4.2 million planning acres
- District boundary that spans 5 different counties (Daggett, Uintah, Duchesne, Carbon & Emery)
- Approximately 190 employees



# Implementing the Multiple-Use Mission

---



# National Conservation Lands

- John Wesley Powell NCA (29,868 acres)
- Jurassic National Monument (850 acres)
- Old Spanish Trail National Historic Trail (68 miles)
- 17 Wilderness Areas (653,722 acres)
- 9 Wilderness Study Areas (141,816 acres)
- 3 Wild and Scenic River Segments





U.S. Department of the Interior  
Bureau of Land Management

# Green River District

## Planning Efforts



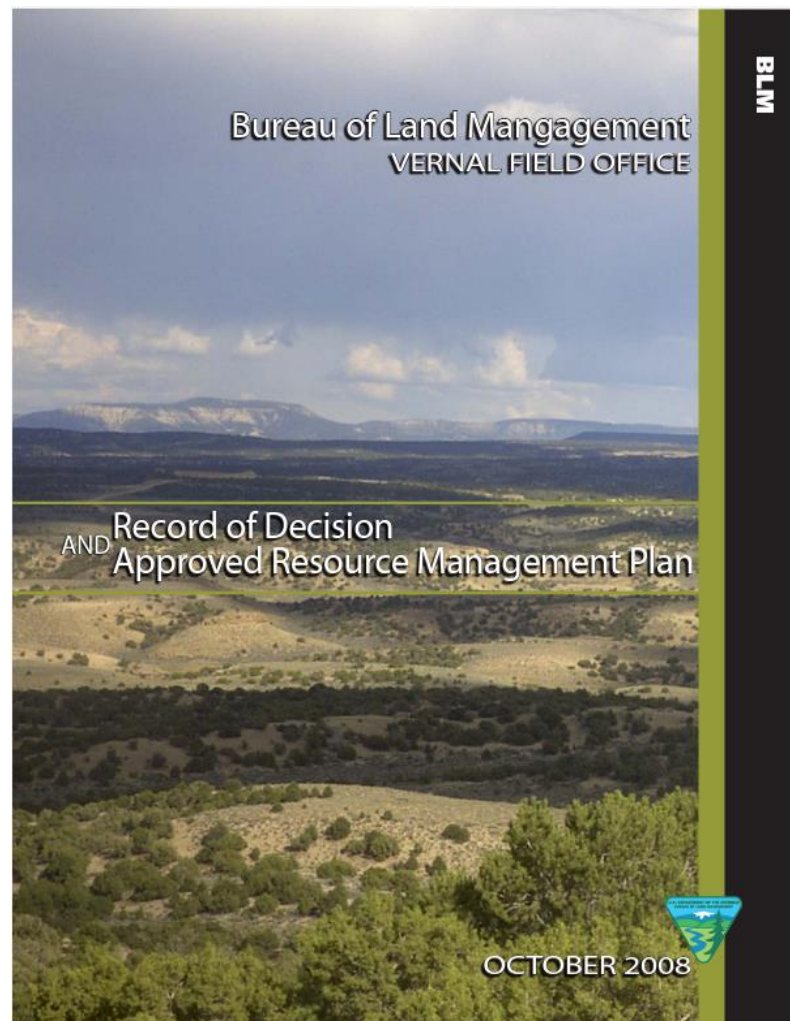
John Wesley Powell NCA



# Green River District

## Five-year Resource Management Plan Review

- Requires that BLM's existing plans be evaluated every 5 years at a minimum
- Field Manager will identify an interdisciplinary (ID) team to complete a comprehensive assessment of the current RMP and any subsequent Plan Amendments
- Each decision is evaluated as implemented, retain, modify, drop or add new decision





U.S. Department of the Interior  
Bureau of Land Management

# Green River District

## Land Use Plan Amendments



San Rafael Swell Recreation Area



# Green River District

## Land Use Plan Amendments



McCoy Flats Non-motorized Trail System




# Price Field Office

Maintain and improve campgrounds • Implement scan & pay • Improve site access  
Enhance visitor services



Buckhorn Wash Campground

A photograph of a modern, single-story building with large windows and a flat roof, situated on a rocky, desert hillside. The building is partially obscured by a dark, semi-transparent overlay. To the right of the building, a large, realistic sculpture of a dinosaur (likely a Tyrannosaurus Rex) stands on a rock formation. The sky is clear and blue, with the sun visible in the upper right corner. The foreground is dominated by dark, jagged rock formations.

# Price Field Office

- Improve Jurassic National Monument
- Create a new interpretive brochure
- Create and install interpretive signs
- Improve three miles of walking trails



U.S. Department of the Interior  
Bureau of Land Management

# Vernal Field Office

Maintain and improve campgrounds • Implement scan & pay • Improve site access  
Enhance visitor services





# NEPA & Planning

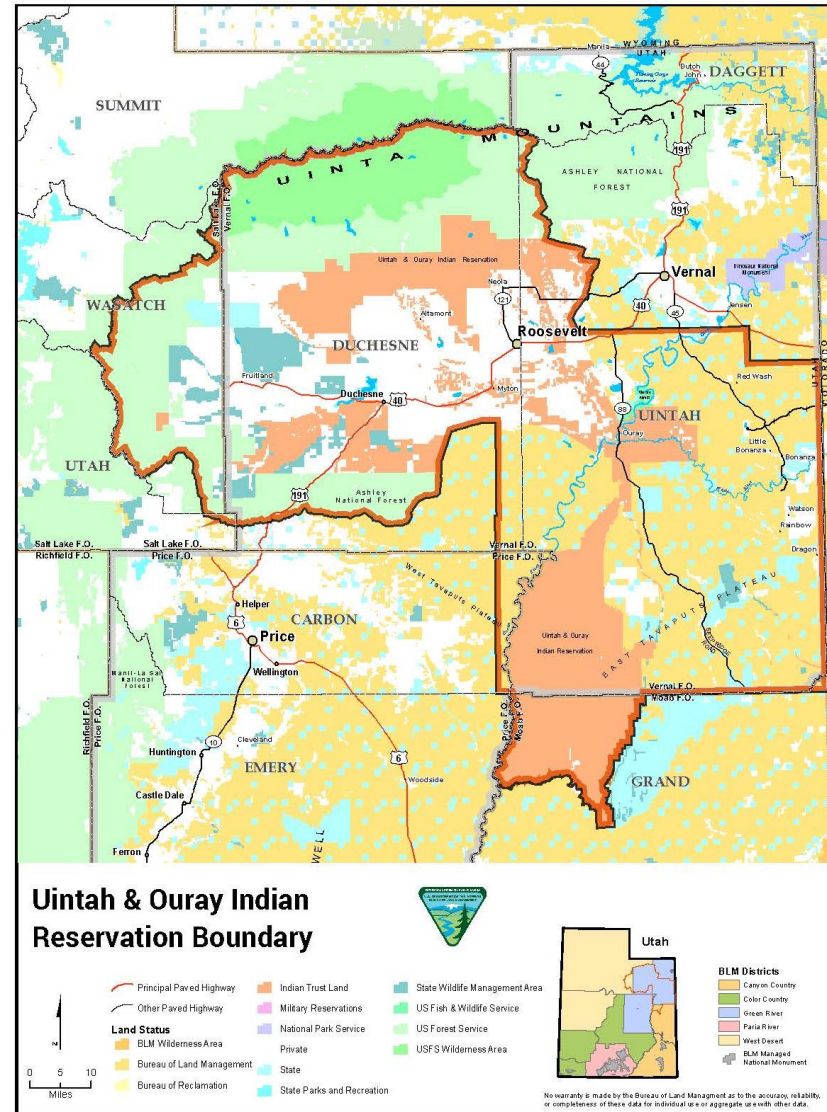
- Unique NEPA requirements:
  - Clean Air Act conformity determination
  - Consultation with the THPO (*Tribal* Historic Preservation Office)







# Exterior Boundaries





Questions?





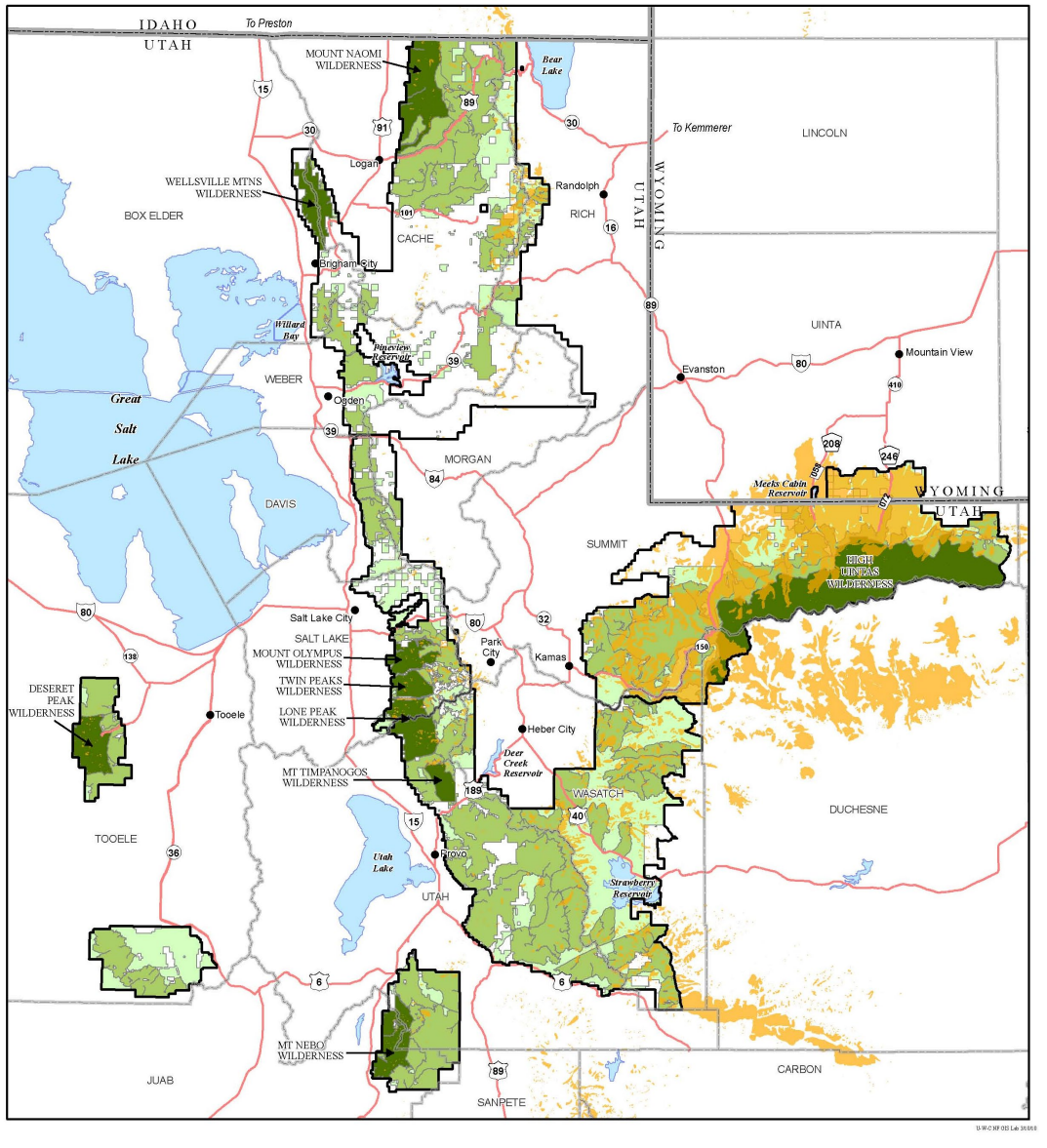
# RECREATION FEE PROPOSAL - OUTREACH SUMMER 2022

Uinta-Wasatch-Cache  
National Forest



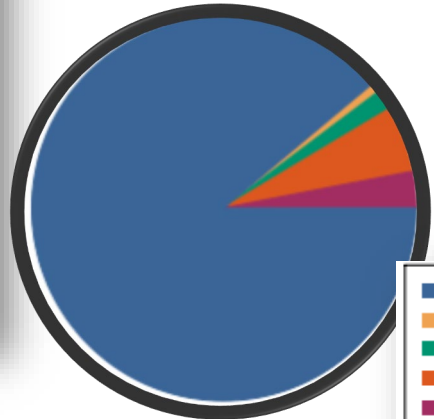


- Overview of the Forest
- Overview of Forest fee proposal
- Amenities required and used to help set fees
- Forest fee proposal by fee type
- “Your Fees at Work”  
Examples
- Public Engagement
- How comments changed the fee proposal
- Question/Comments?



© 1999-2001 L&L 2001

**Forest received 10,702,000 visitors per year**



Recreation	88.9%
Use Bathroom	0.9%
Work or Commute	1.7%
Passing Through	2.5%
Some Other Reason	3.9%
<b>Total:</b>	<b>100.0%</b>



71 Day Use Sites



14 Campgrounds



2 Dump Stations



14 Special Recreation Permit Sites  
(4 OHV and 10 winter trails)

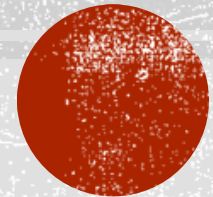


3 Group Sites (1 included in day-  
use site number above)



8 Cabin Rentals

# OVERVIEW OF FEE PROPOSAL TOTAL OF 111 SITES



## Day Use Sites

Must have all amenities:

- Picnic Tables
- Kiosk
- Permanent Toilet
- Designated Parking
- Garbage Collection
- Security

## Campgrounds

Must have majority:

- Fee Tube
- Picnic Tables
- Tent Pads
- Fire Ring
- Garbage Collection
- Kiosk
- Vault Toilet
- Gravel Road/Parking
- Security

## Special Recreation Permits

- Fee Tube
- Kiosk
- Patrols
- Maintained OHV Trails
- Plowing Roads/Parking Areas
- Grooming Trails
- Safety Advisories
- Map for Trails
- Gravel Road/Parking
- Security

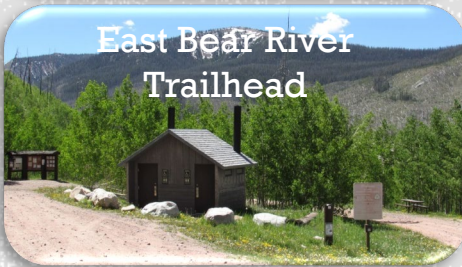


## Current Fees:

- 3-Day Pass \$6 per vehicle
- 7-Day Pass \$12 per vehicle
- Annual Pass \$45 per vehicle

## Proposed Fees:

- 3-Day Pass \$10 per vehicle
- 7-Day Pass \$20 per vehicle
- Annual Pass \$60 per vehicle



Site Type	New Fees	Increased Fees	Change in Fee Structure/ Decrease	Fee Elimination	Removed from Proposal
Picnic Areas	3	9	3	0	1
Trailheads	23	19	0	3	3
Fishing Sites	0	5	6	1	0
Observation/ Interpretive Sites	2	1	0	0	1
<b>Totals:</b>	<b>28</b>	<b>34</b>	<b>9</b>	<b>4</b>	<b>5</b>





Vernon Reservoir Campground



Yellow Pine Campground

## Current Fees:

- 3-Day Pass \$6 per vehicle
- 7-Day Pass \$12 per vehicle
- Annual Pass \$45 per vehicle



Dry Canyon Campground



Horsemen Camp

## Proposed Fees:

- 3-Day Pass \$10 per vehicle
- 7-Day Pass \$20 per vehicle
- Annual Pass \$60 per vehicle

Site Type	New Fees	Increased Fees	Change in Fee Structure	Removed from Proposal
Campgrounds	8	6	0	0



Lilly Lake RV Comfort Station



Soapstone RV Comfort Station

## Current Fees:

- 3-Day Pass \$6 per vehicle
- 7-Day Pass \$12 per vehicle
- Annual Pass \$45 per vehicle

## Proposed Fees:

- 3-Day Pass \$10 per vehicle
- 7-Day Pass \$20 per vehicle
- Annual Pass \$60 per vehicle

Site Type	New Fees	Increased Fees	Change in Fee Structure	Removed from Proposal
Soap Stone	0	1	0	0
Lilly Lake	0	1	0	0

# PROPOSED GROUP CAMPGROUNDS

## Middle Fork Blacks:

- New group campground
- Walk-In Fees:
  - 3-Days \$10 per vehicle
  - 7-Days \$20 per vehicle
  - Annual Pass \$60 per vehicle
- Reservation Fee:
  - \$50 per night
- Can accommodate up to 50 people



## Theater-In-The-Pines Group Campground & Amphitheatre:

- Current: \$350 per night (doesn't include Amphitheatre)
- Proposed fee \$500 per night
- Can accommodate up to 150 people



## \$75 Cabins

Up to 6 people  
Vault Toilet  
Propane Lights/  
Appliances  
Propane Heat  
Gravel Road

## \$100 Cabins

Up to 6 people  
Vault/Flush  
Toilets  
Running Water  
Paved Road

## \$125 Cabins

Up to 6 people  
Shower  
Kiosk  
Paved Road with  
Gravel Parking

## \$150 Cabins

Up to 8 people  
Electricity/  
Modern  
Appliances  
Wood Stove

### Site Type

### New Fees

### Increased Fees

### Change in Fee Structure

### Removed from Proposal

\$75 Cabins

2

0

0

0

\$100 Cabins

1

1

0

0

\$125 Cabins

1

1

0

0

\$150 Cabins

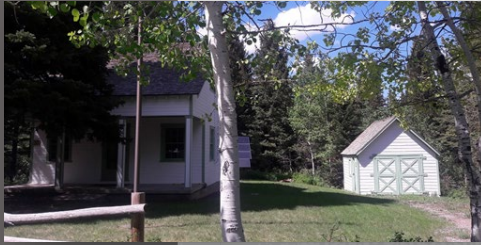
1

1

0

0

# PROPOSED CABINS — READY TO GO



## New Fee Cabins

- Mill Creek - \$100
- Hewinta - \$75
- Timpooneke - \$125

## Fee Increase Cabins

- Tony Grove - \$80-\$100



# PROPOSED CABINS — ALMOST READY



## New Fee Cabins

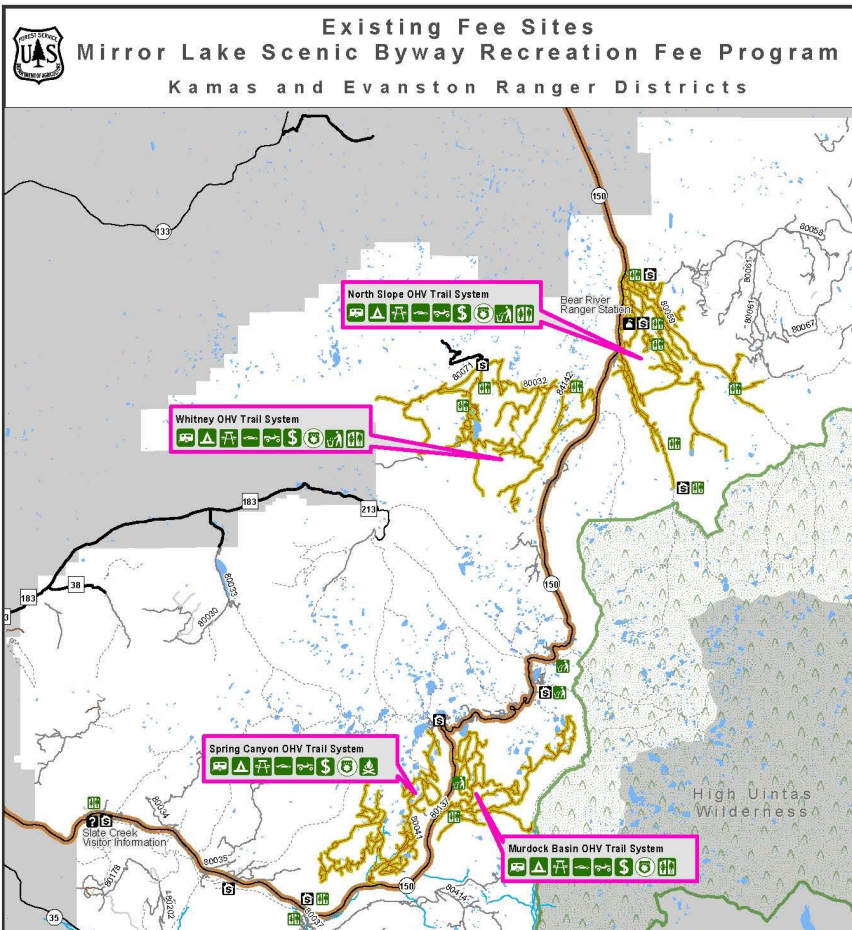
- Elk Valley - \$75
- Right Hand Fork - \$150

## Fee Increase Cabins

- Card - \$100-\$150
- Mirror Lake - \$100-\$125



# OHV TRAILS



## Current Fees:

- 3-Day Pass \$6 per vehicle
- 7-Day Pass \$12 per vehicle
- Annual Pass \$45 per vehicle

## Proposed Fees:

- 3-Day Pass \$10 per vehicle
- 7-Day Pass \$20 per vehicle
- Annual Pass \$60 per vehicle



**Site Type**

**New Fees**

**Increased Fees**

**Change in Fee Structure**

**Removed from Proposal**

**OHV Use**

0

4

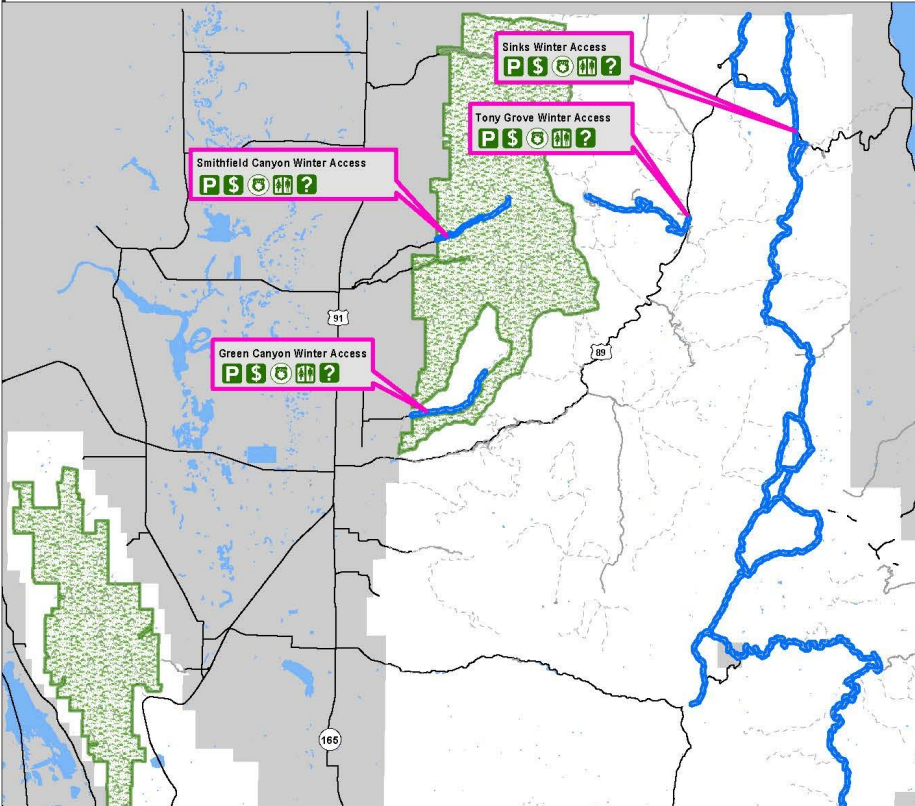
0

0

# WINTER TRAILS



2022 Proposed Changes to Recreation Fees  
 Fee Management Plan for Trailheads & Groomed Trails  
 Logan Ranger District



## Current Fees:

- 3-Day Pass \$6 per vehicle
- 7-Day Pass \$12 per vehicle
- Annual Pass \$45 per vehicle

## Proposed Fees:

- 3-Day Pass \$10 per vehicle
- 7-Day Pass \$20 per vehicle
- Annual Pass \$60 per vehicle



Lily Lake Trailhead

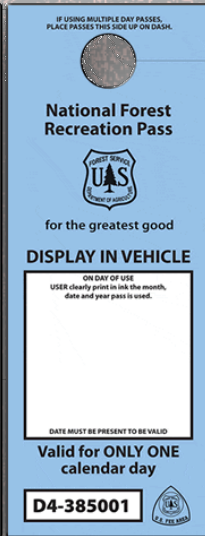


Tony Grove Trailhead

Site Type	New Fees	Increased Fees	Change in Fee Structure	Removed from Proposal
Winter Use	4	6	0	3

# FEES AND PASSES

es ll be honored at most sites included in



The passes shown above will provide access to the following types of sites in this proposal:

Day Use Sites



Off Highway Vehicle trail systems



Winter Locations

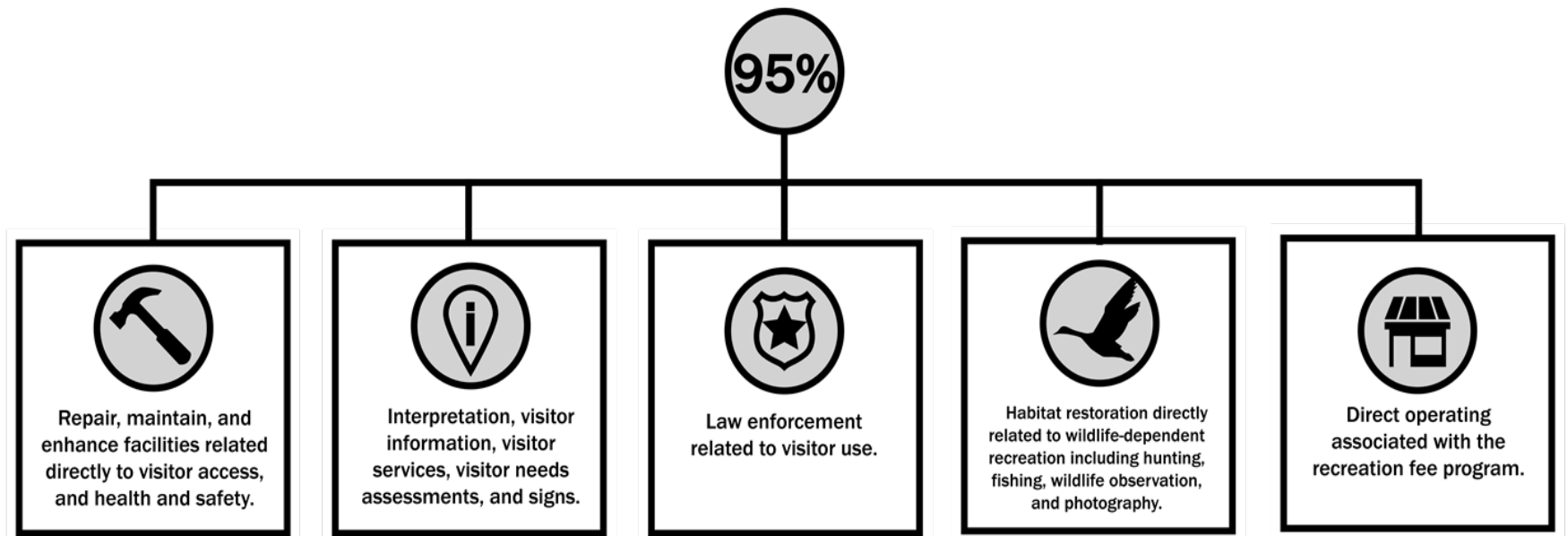


Campgrounds





# WHERE DOES THE FEE REVENUE GO?



# YOUR FEES AT WORK!



## Reoccurring Maintenance

**55** toilets cleaned 1-2 times a day

**\$120,000** spent on pumping toilets and toilet paper

**48**-Day Use Sites kept maintained

**5** water systems maintained

## Deferred Maintenance

**100+** signs and kiosks installed at fee sites

Fire rings replaced

Restrooms painted and fixtures upgraded

Picnic tables replaced

## Visitor Education

**1,000** days spent on visitor education

**16** Forest Protection Officers hired annually

**Year-Round** staffing of booths and compliance staff to educate and ensure fees are efficiently collected



# YOUR FEES AT WORK!



## Trails and Wilderness

**500** miles of trail maintenance on non-motorized, motorized and Wilderness trails by utilizing recreation fee funds, grants and volunteer contributions.

**108** days of Wilderness stewardship work in 3 different Wilderness areas.

## Winter Operations and Grooming

Groomed routes for:

- **Snowmobiles**
- **Cross country skiing and Fat bikes**

Provided **winter education** on topics such as safety and Avalanche Awareness.

Kept trailheads plowed

## Leveraging Funds

**\$396,000** - External grants by matching with \$153,000 of recreation fee funds.

These grants supported developed recreation and trail improvement projects.



# YOUR FEES AT WORK!

## Major deferred maintenance project examples:

### Pine Hollow Trailhead

Reconstructed to address failed asphalt surface and expand capacity to this popular winter trailhead



### Cascade Springs

Sections of the asphalt trail were replaced and repaired, and 29 new interpretive signs were installed. This was done in partnership with the State of Utah, Recreation Trails Grant.



### Mirror Lake

Sections of the trail were improved, boardwalks were repaired, tables and benches were replaced, and three interpretive panels were updated.



### Tony Grove Guard Station

Interior and exterior work was completed to restore this historic guard station and prepare for public reservation.



# SUCCESSFUL PARTNERSHIPS

Fee dollars make a bigger impact through successful partnerships



## Utah Division of Outdoor Recreation

Supports over-snow grooming for snowmobiles and OHV trail education and provides grant funding.

## Utah Department of Transportation

Supports extensive road maintenance, repairs, and improvements, as well as winter plowing.

## Utah County Sheriff/ Summit County Sheriff

Supports extra law enforcement presence at heavily used fee sites and the Timpanogos Emergency Response team.

## National Park Service Timpanogos Cave National Monument

Supports interpretive and education offerings in American Fork, including the Dark Sky program.



# YOUR FEES AT WORK!



## Crystal Lake Trailhead

The Heber-Kamas Ranger District reconstructed and expanded the trailhead by leveraging fee dollars with Summit County, State of Utah Office of Outdoor Recreation, and Great American Outdoors Act funding.

- Expanded vehicle capacity from 54 to 160
- Added a staging area for search and rescue operations, an additional restroom, and new information panels
- Provides improved access via 4 trails that serve the highly popular Lakes Country



# PUBLIC INVOLVEMENT ACTIONS

Comment period July 7 to September 7, 2022

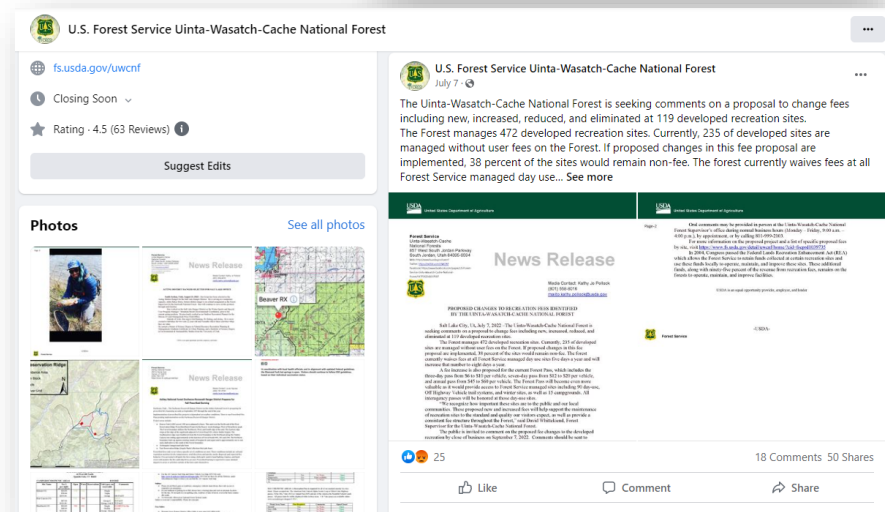
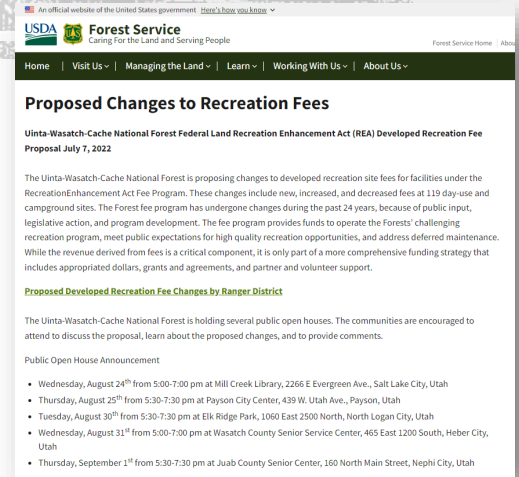
- Posted on Forest website
- Twitter message and Facebook posts
- Signs posted onsite
- News Release distributed to 68 media outlets and published

3 Newspapers

1 Radio Station

2 TV Reports

- Federal Register Notice published August 5, 2022



# Intermountain Region – Recreation Fee Proposals

## Project Information

## Submit a Comment

To submit a general comment please email:  
SM.FS.UWCFeeProp@usda.gov

*Note: Do not track your physical location if your browser prompts you to. If the map has zoomed to a different location than the project area, press the "Home" button to return to the project.*

It's easy-

1. Select the Home button to see the full list of sites
2. Use the Filter list by map toggle to show only those sites that are in your current view

## Sustainable Recrea

## Project Information

**Project Description:**  
The Uinta-Wasatch-Cache National Forest is interested in receiving your comments on recreation fee proposals.

You can submit your comments by using the interactive web map from the "Comment - Interactive Web Map" tab below.

**Project Point of Contact:** Uinta-Wasatch-Cache National Forest  
**Phone:** 801-999-2103  
**Email:** SM.FS.UWCFeeProp@usda.gov  
**Mailing Address:**  
Attention: Developed Recreation Site Fee Proposal  
857 West South Jordan Parkway



- BOX ELDER TRAILHEAD
- BUTTERFLY LAKE FISHING SITE
- CARD GUARD STATION
- CARDIFF FORK/MILL D NORTH TRAIL...
- CASCADE SPRINGS
- CAUSEY RESERVOIR PICNIC AREA
- CHICKEN CREEK EAST FISHING SITE
- CHICKEN CREEK WEST (JAKES BAY)...
- CHRISTMAS MEADOWS TRAILHEAD

# VIRTUAL COMMENT MAP



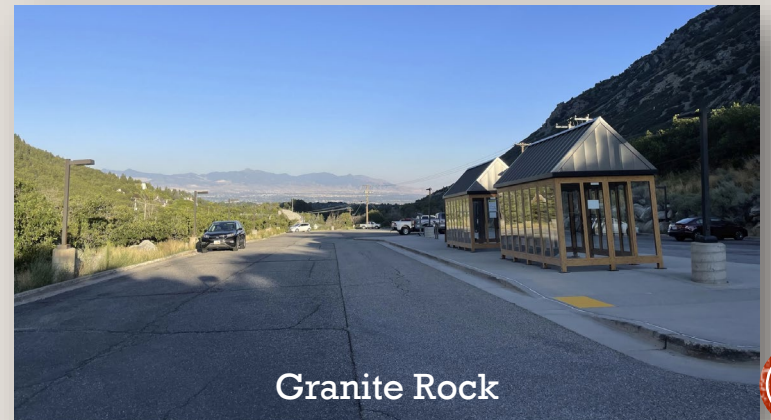
# PUBLIC INVOLVEMENT ACTIONS

## Public Open Houses

- August 24 - Salt Lake City
  - 29 people attended
- August 25 - Payson
  - 28 people attended
- August 30 - North Logan
  - 23 people attended
- August 31 - Heber City
  - 1 person attended
- September 1 - Nephi
  - 84 people attended

## Tabling Sessions at Big and Little Cottonwood Canyon

- August 5-7
- August 12-14
- August 19-21



# PUBLIC INVOLVEMENT ACTIONS

15 Federal Legislators briefed on July 7 and August 25

- No questions or comments

21 State Elected Officials briefed on July 7

- No response

4 County Commissions briefed in July

- Utah County Commission had no comments
- Juab County Commission identified opposition to fees
- Uinta County Commission acknowledge the need for and standardization of fee structure

Four Tribes were sent letters on October 10

- No comments or concerns received

Over 200 groups and partners contacted

# PUBLIC INVOLVEMENT ACTIONS

## Correspondence with Key Contacts:

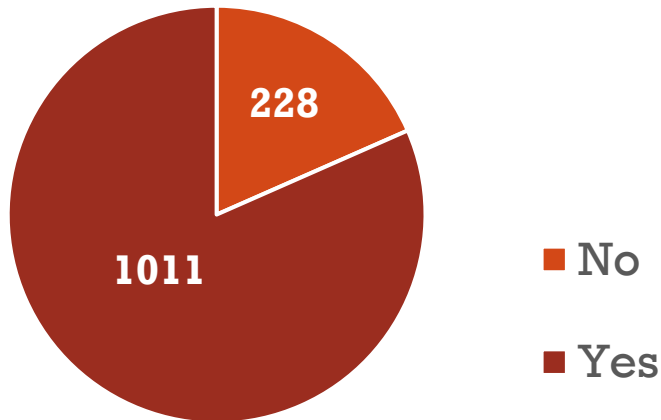
American Fork Canyon Working Group	Snowbird
Northern Utah Snowmobile Club Top of Utah	Save Our Canyons
Nordic United	Salt Lake Climbers Alliance
Northern Utah Snowmobile Club	State Office of Outdoor Recreation Forum
Utah Department of Natural Resources	Green Latinos
Big Cottonwood Community Council	UDOT
Wasatch County Lands Meeting	Emailed over 188 partners and key contacts



# OVERVIEW OF PUBLIC RESULTS

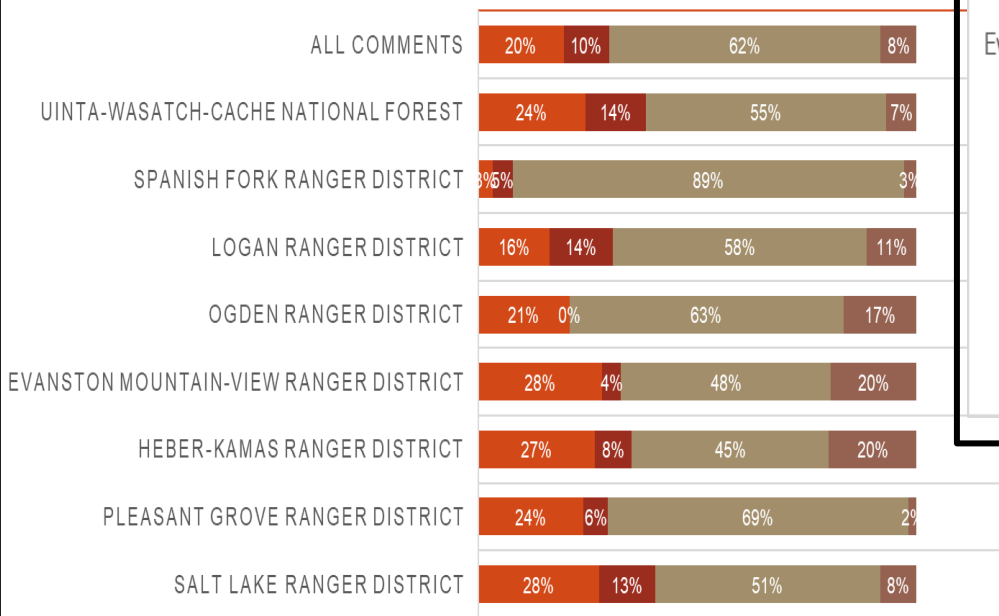
1,239 comments received  
(Full comments in package)

## Total Substantive Comment Count

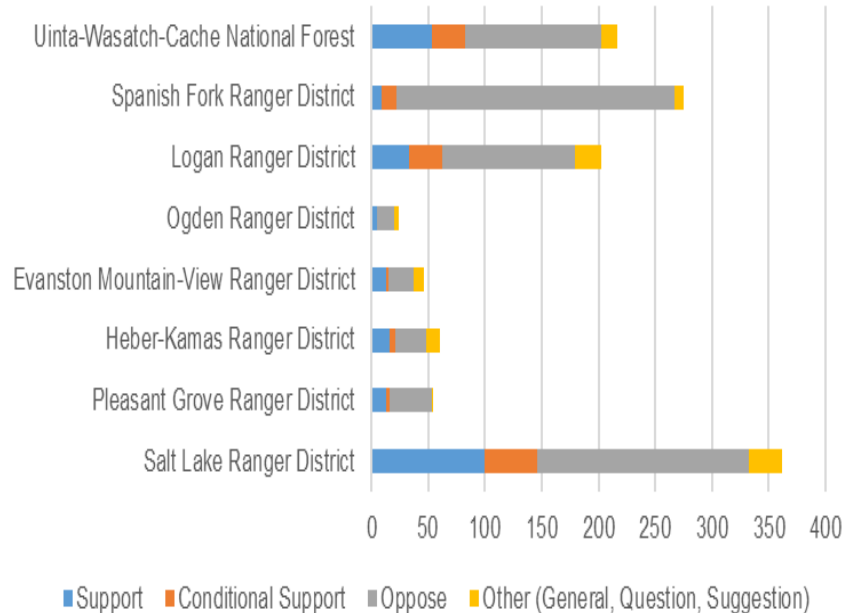


## PERCENTAGE OF COMMENT TYPE BY ADMINISTRATIVE UNIT

■ Support ■ Conditional Support ■ Oppose ■ Other (General, Question, Suggestion)



## COMMENT COUNT BY ADMINISTRATIVE UNIT



# OVERVIEW OF PUBLIC RESULTS





Does the commenter support the recreation opportunity?



Is comment fee related?



What recreation opportunity was identified?



How does the comment relate to the way the Forest provides the recreation opportunity?

Comments  
evaluated by topics

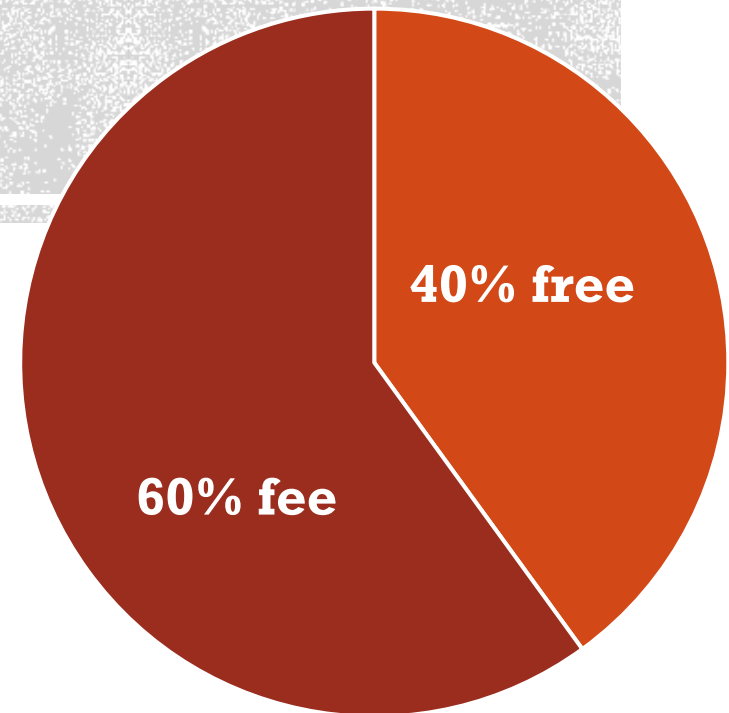


- Access for locals
- Access for low income, under-represented groups
- Access for youth, family, seniors
- All Should Pay
- Amenities Provided
- Fee Program Operations
- Fee Use Transparency
- Fee Use and/or Suggestions
- Fee/Pass Structure
- Free Access for All
- Misunderstanding of Fee Structure
- Site Specific
- Taxation/Economy/Inflation/Beyond Local Agency Control
- Unintended Consequences
- Unique
- Utilize Volunteers/Partnerships
- Visitor Use Numbers

# OVERVIEW OF PUBLIC RESULTS

Comment further  
evaluated under  
Sub-Topics

# CHANGES TO FEE PROPOSAL





# CHANGES TO FEE PROPOSAL



Christmas Tree Meadows



Causey Reservoir

## Day Use Sites Removed from Fee Proposal – will remain free

- Murray Farm Trailhead
- Granite Rock Trailhead
- Temple Quarry Trailhead
- Jenkins Flat Picnic Site
- Devil's Kitchen Interpretive Site
- **The revised proposal includes 71 day-use sites, including 5 that have charged a fee but will no longer charge a fee.**

## Special Recreation Permits Removed from Fee Proposal – will remain free

- Co-op Winter
- Clyde Creek Winter
- Strawberry Winter
- **The revised proposal includes 14 Special Recreation Permit sites**

## Campgrounds, Cabins, and Group Sites – no changes to fee proposal

- The proposal includes 8 cabins, 14 campgrounds, 2 group campgrounds, and 2 dump stations,



# NATIONAL AND FOREST FEE FREE DAYS

The proposal includes 11 free days instead of five.

- Martin Luther King Jr. Day
- President's Day
- National Get Outdoors Day
- National Public Lands Day
- Veterans Day
- National Trails Day – Forest Free Day
- Great American Outdoors Act Day
- Earth Day – Forest Free Day
- National Volunteer Day – Forest Free Day
- Juneteenth – Forest Free Day
- National Day of Service – Forest Free Day

**What days  
are fee free  
days?**



# VOLUNTEER PASS

## Proposed way to earn a Forest Pass:

Forest Pass:	Current Hours:	Proposed Hours:	Age Group:
Annual	150 hours	40 hours	18 years or older + Family

Ruth Lake



The Forest manages 472 developed recreation sites. Currently, 235 of developed sites are managed without user fees on the Forest. If proposed changes in this fee proposal are implemented, 40 percent of the sites would remain non-fee.



# QUESTIONS...

A set of five stylized tree icons in white, arranged horizontally. From left to right: a tall, thin evergreen; a shorter, wider evergreen; a tall, thin evergreen with a circular top; a shorter, wider evergreen with a circular top; and a shorter, wider evergreen with a circular top.

SEE YOUR  
SOMEWHERE  
NATIONAL FOREST WEEK™





U.S. Department of the Interior  
Bureau of Land Management

---

# Utah Resource Advisory Council Jan 18, 2023

Paria River District   Recreation Dispersed Camping   Harry Barber

---





# Kane County

- Population approximately 7,992 residents.
- Recreation increasing in the Kanab area and the House Rock Valley Road which has several popular trailheads including Buckskin and Wire Pass slot canyons and the Wave.
- More permanent residents moving into the area.
- The Public is asking for more recreation opportunities.



# Garfield County

- Population approximately 5,129 residents.
- Recreation increasing in the areas near Escalante and Boulder, and all along HWY 12.
- Popular areas include Calf Creek and Spooky/Peekaboo slot canyons.



# Need for Camping Areas

- Dispersed camping is very common in the Paria River District.
- In areas near Escalante and Kanab, campgrounds and designated dispersed camping areas are needed to meet the increasing demands of our visitors.
- Ponderosa Campground near Kanab has been successful in alleviating some dispersed camping challenges.
- GSENM has very limited camping spaces.





## KFO Visitors:

2018 - 289,822

2019 - 311,861

2020 - 316,126

2021 - 845,207

(Pandemic)

2022 - 450,354



## GSENM Visitors:

2018 - 1,157,915

2019 - 1,118,100

2020 - 959,234

2021 - 1,330,845

(Pandemic)

2022 - 1,182,401



# Increased Dispersed Camping

Reasons why dispersed camping is increasing:

- Visitor preferences:
  - looking for solitude/naturalness
  - Looking for free camping opportunities
- Developed campground sites not available
- Visitors want to be closer to the trail heads



# Other Challenges

- Social Media Influencers
- Not visiting an office to find out what areas are open or closed to camping
- Social Media attracting more visitors
- Wrong type of vehicles
  - 2WD and AWD are not 4WD.
- Resource Damage
  - Trash
  - Human waste
  - Vegetation damage



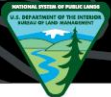
# Campground Maintenance

- Toilets
- Dumpsters
- Picnic Tables
- Fire Rings
- Kiosks
- Shade Shelters
- Hookups – electric, water, sewer
- Increased feeling of security – managed site, law enforcement availability



# Discussion

- Developed campgrounds (BLM and private)
- Education – at dispersed areas and developed campgrounds (resource protection emphasis)
- Campaigns (Leave No Trace)
- Partnership with State/County Travel Councils
- Partnerships with other providers (who may be able to offer similar amenities on private lands).



# Belly of the Dragon

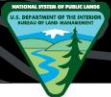




# The Barracks







U.S. Department of the Interior  
Bureau of Land Management

# Ponderosa Campground





# Questions?





U.S. Department of the Interior  
Bureau of Land Management

# Utah Resource Advisory Council Jan. 18, 2023

Canyon County District    Dispersed Camping    Nicollee Gaddis Wyatt





# Grand County

- Grand County's population is approx. 10,000 residents.
- The BLM-managed lands within Grand County host nearly three million visitors a year.
- Existing and planned accommodations are still not enough to meet the visitor demands.
- Many people live in vans, recreational vehicles, campers full time. Anecdotally, many of these individuals are employed in the visitor services/recreation industries.
- Many van lifers, or 'full timers' work jobs in the community or telework and work remotely from areas that have cellular connectivity.



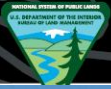
# San Juan County

- San Juan County population approximately 16,000 residents.
- BLM-managed public lands in San Juan County host approximately 600,000 visitors a year.
- A majority of visitors to BLM-managed public lands in this area are spending time in Bears Ears National Monument.
- Towns are small and have limited housing stock (short term/long term rentals).



# Need for Camping Opportunities

- BLM-managed lands are known for dispersed camping availability.
- In popular destinations (like Moab), campgrounds and designated dispersed camping sites are needed to meet visitor demands.
- Developed campgrounds and designated dispersed sites are easy to use and relieve in town congestion.
- Dispersed camping works best when the use is limited and visitors are prepared (thus creating less impact to public lands/resources and other visitors).



U.S. Department of the Interior  
Bureau of Land Management





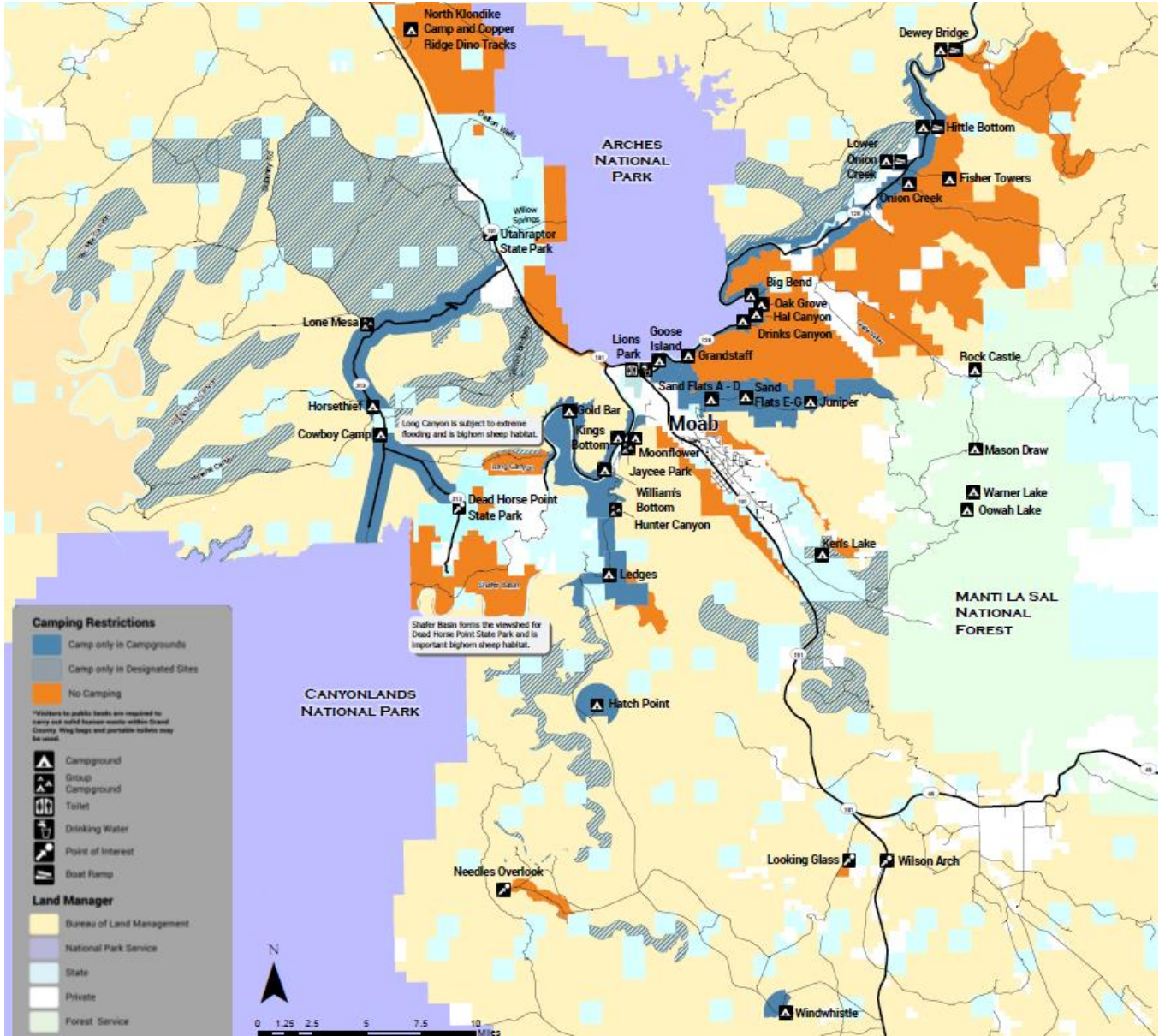
U.S. Department of the Interior  
Bureau of Land Management





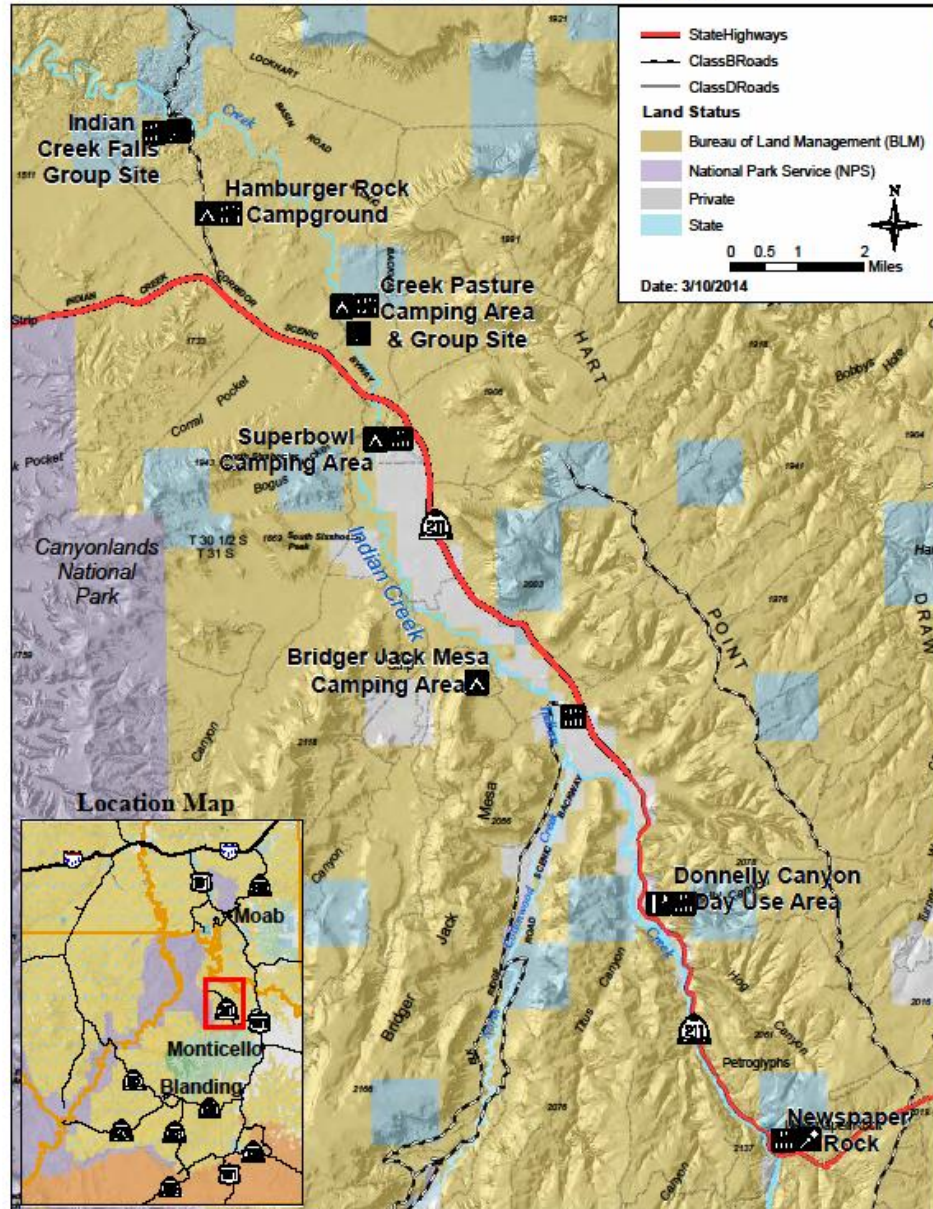


# Camping Restrictions in Moab





### Camping Opportunities in Indian Creek





# Dispersed Camping Trends

- The Canyon County District includes 3.8 million acres of iconic public lands.
- No formal way to track dispersed camping.
- Dispersed camp areas are reported by staff and volunteers.
- Impacts to vegetation are increasing as recreationists create new illegal roads.
- New campsites and overflowing dispersed camping areas are leading to new dispersed sites and campground 'campgrounds'





# Increased Demand

Why is demand for dispersed camping increasing?

- Sites in campgrounds are full
- Visitors are looking for solitude
- Visitors are seeking free camping
- Visitors find information about dispersed camping through third parties (word of mouth, web and mobile resources etc.)





U.S. Department of the Interior  
Bureau of Land Management





# Contributing Challenges/Misconceptions

- Historic use
- Word of mouth
- 3rd party information on the web and camping applications
  - Some areas that are closed show up as available free camping



Visitor best practices: contact the managing agency prior to camping and obey official signage.



# Addressing Dispersed Camping

- In the Moab Field Office, the BLM doesn't anticipate the need or opportunity for dispersed camping to go away.
- Options for addressing challenges:
  - Continue to provide dispersed camping opportunities
  - Create limits to dispersed camping in specific areas, consider building campgrounds or limiting camping to designated dispersed sites to meet visitor needs
    - Example: Klondike Bluffs/North Klondike Bluffs Campground



U.S. Department of the Interior  
Bureau of Land Management

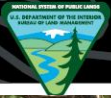






# Discussion

- Future developed fee campgrounds and/or designated dispersed nontraditional campgrounds
- Education
- Campaigns (Leave No Trace, Own Your Impact)
- Partnership with state/local travel entities
- Partnerships with other providers



Thank you!



U.S. Department of the Interior  
Bureau of Land Management

# Extra Slides



# Campground Maintenance Cost Amenities

- Toilets
- Dumpsters
- Picnic Tables
- Fire Rings
- Kiosks
- Shade Shelters

How are these amenities funded? User fees.



# Campground Maintenance Cost

- 48 Campgrounds and 175 toilets
- Trash contract just over \$100,000 per year
- Toilet pumping contract just under \$100,000 per year
- Toilet paper cost \$15,000 per year
- Approximately \$2,000 to outfit each campsite (picnic table, fire ring, site post, etc.) in addition to roads, toilets, fencing, kiosks, signs, shade shelters, speed bumps, etc.
- Replacement picnic tables (\$1,200), fire ring (\$600), fencing (\$500)



# Partnerships

- BLM's partners help meet the camping/visitation needs:
  - Hotels – In Grand County there are 3000+ rooms and 1000 more on the way
  - KOAs and private campgrounds
  - Airbnb/ VRBO, cabins, tents, hogans, yurts, etc.
  - BLM, USFS, NPS and Utah State Park campgrounds



U.S. Department of the Interior  
Bureau of Land Management

---

# Utah Resource Advisory Council January 18, 2023

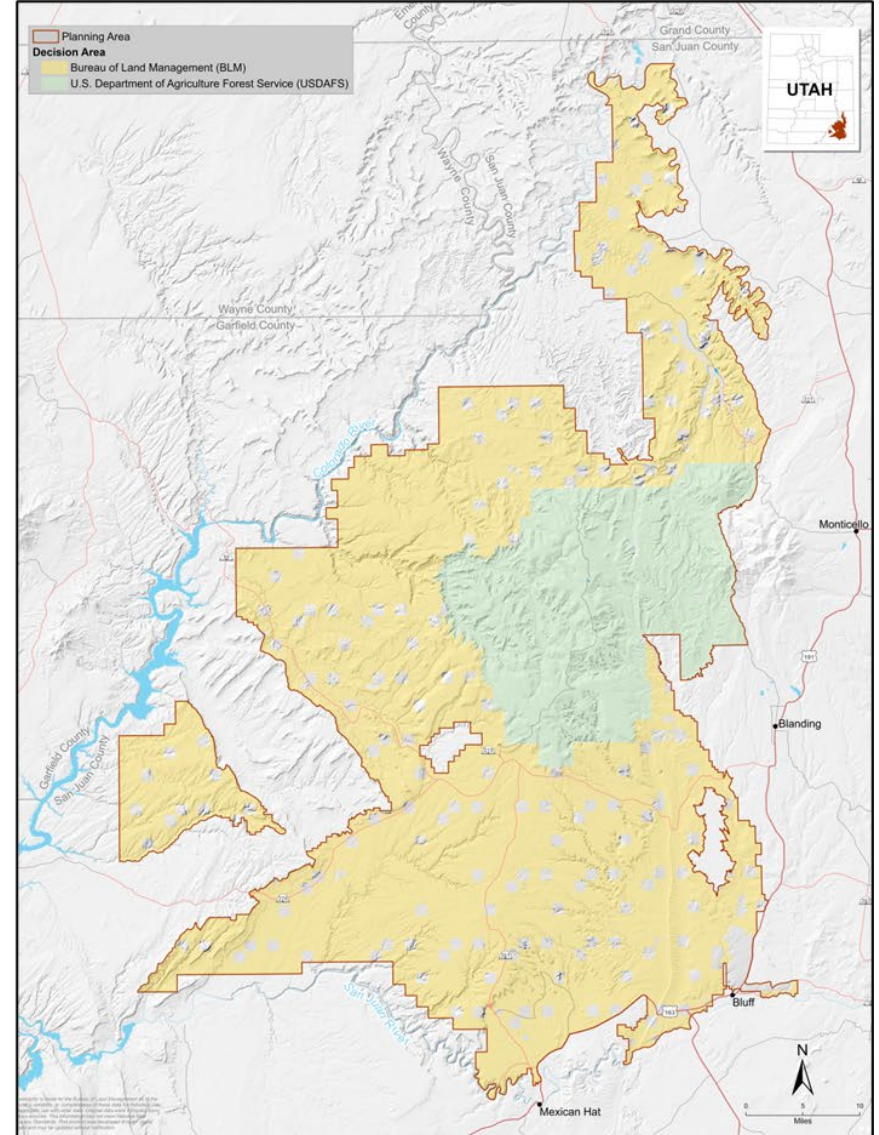
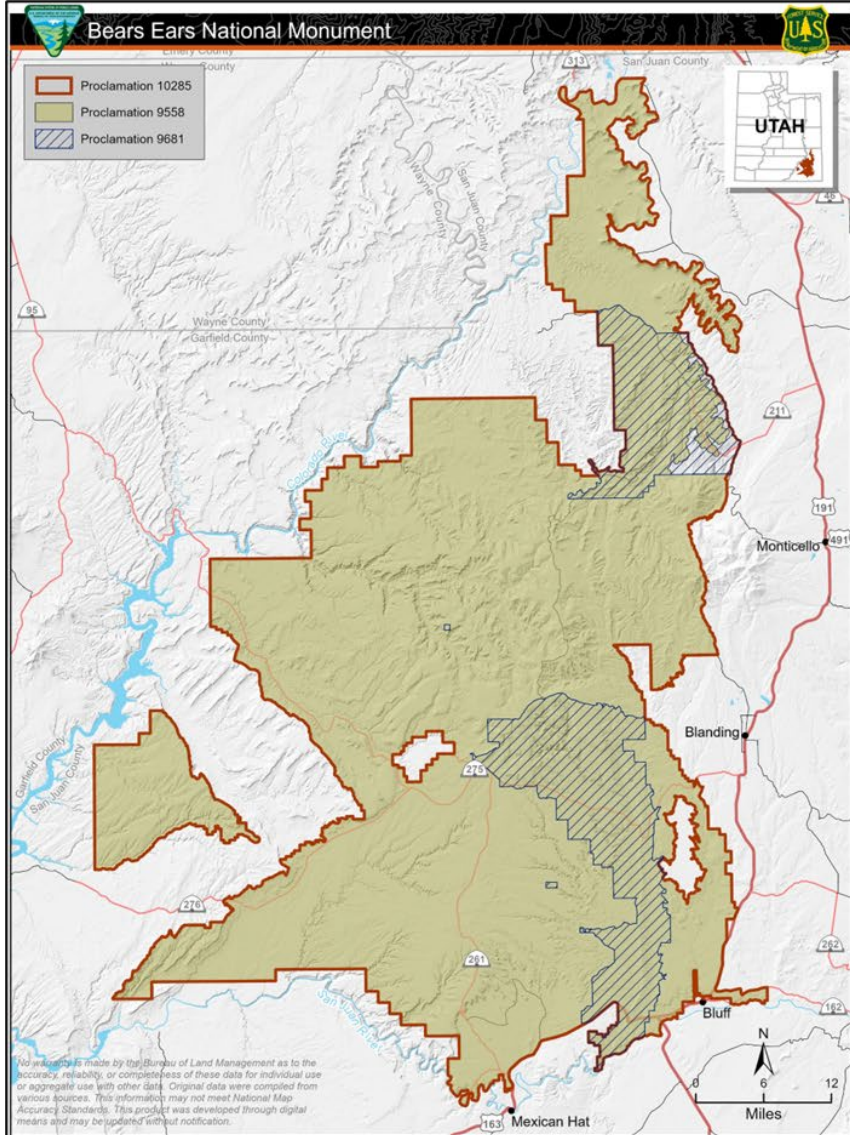
Canyon County District – Bears Ears National Monument – Nicolle Gaddis-Wyatt

---





# Planning Area Maps







# Planning Steps Completed

- Analysis of Management Situation
- Scoping Period and Report
- Objects and Values Inventory

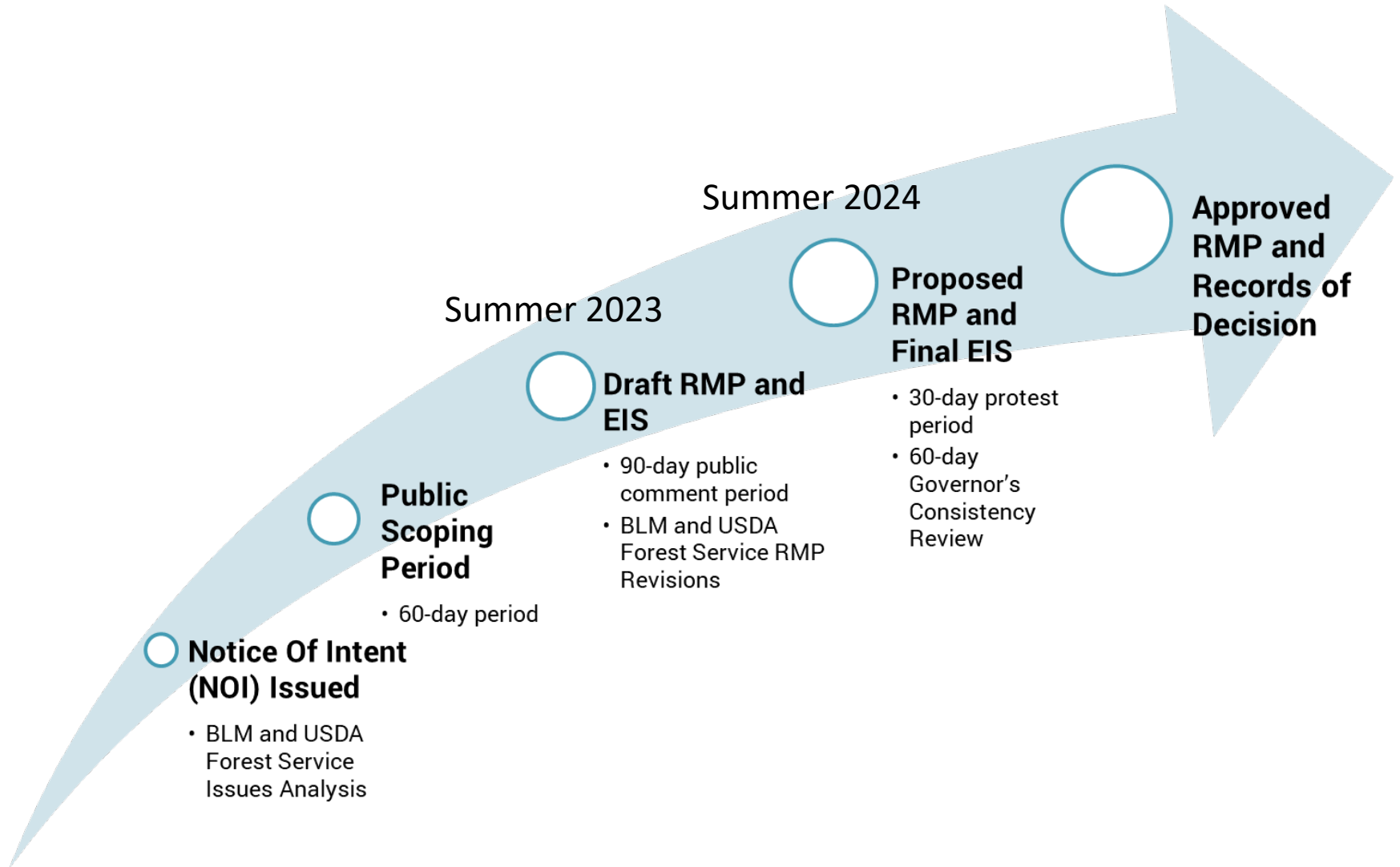


# Planning Steps In Progress

- Drafting Alternatives
  - Biweekly meetings with the Bears Ears Commission
- ACEC Evaluation
- LWC Inventory
- Visual Resource Inventory



# What's Next: Planning Timeline





# How you can help!

- Submit comments and encourage others to submit comments on the Draft in 2023
  - ePlanning website: <https://bit.ly/3UaNLkD>
  - Regular mail:
    - Bureau of Land Management - Bears Ears National Monument P.O. Box 7, Monticello, Utah 84535
  - Questions? Accommodation requests?
    - E-mail: [BLM UT MT Comments@blm.gov](mailto:BLM_UT_MT_Comments@blm.gov)



U.S. Department of the Interior  
Bureau of Land Management





U.S. Department of the Interior  
Bureau of Land Management

# Utah Resource Advisory Council January 18, 2023

Paria River District – Grand Staircase-Escalante National Resource Management Planning





# Welcome

---

Harry Barber,  
Bureau of Land Management  
District Manager,  
Paria River District

669 S. Hwy 89A,  
Kanab, Utah 84741  
435-644-1200  
[hbarber@blm.gov](mailto:hbarber@blm.gov)





# Why?

- A new management plan is required by [Proclamation 10286](#) (Oct. 8, 2021)
- Guidance for [“Interim Management of Grand Staircase-Escalante National Monument”](#) issued by the BLM Director (Dec. 16, 2021).
  - Memorandum directs BLM-Utah to begin planning a new management plan, for the purpose of protecting and restoring the objects identified in Proclamation 10286.
  - Section 302 of the Federal Land Policy and Management Act (FLPMA) states that public lands should be managed under the principles of multiple use and sustained yield “except that where a tract of such public land has been dedicated to specific uses according to any other provisions of law it shall be managed in accordance with such law.”
  - Proclamation 10286 dedicates the lands within the Grand Staircase to a specific use, therefore the lands reserved within the monument boundary must be managed in a manner that protects the objects and values for which the monument has been designated. “In other words, within Grand Staircase, typical multiple use management is superseded by the direction in Proclamation 10286 to protect monument objects. Multiple uses are allowed only to the extent they are consistent with the protection of the objects and values within the monument.” (Emphasis added)





# Why? continued

- A new management plan will establish management goals, objectives and directions that ensure conformance with Proclamation 10286 and guide future management actions that will ensure protection of Monument objects and values, consistent with Proclamation 10286.
- Responds to new issues, laws, regulations, policy or changed circumstances.
- Provides analysis to support the BLM in identifying allowable and sustainable uses, and discretionary uses.
- Establishes a balance between resource use and resource protection.
- Provides the foundation of project-level decisions.
- Provides the basis for legally defensible project-level decisions.



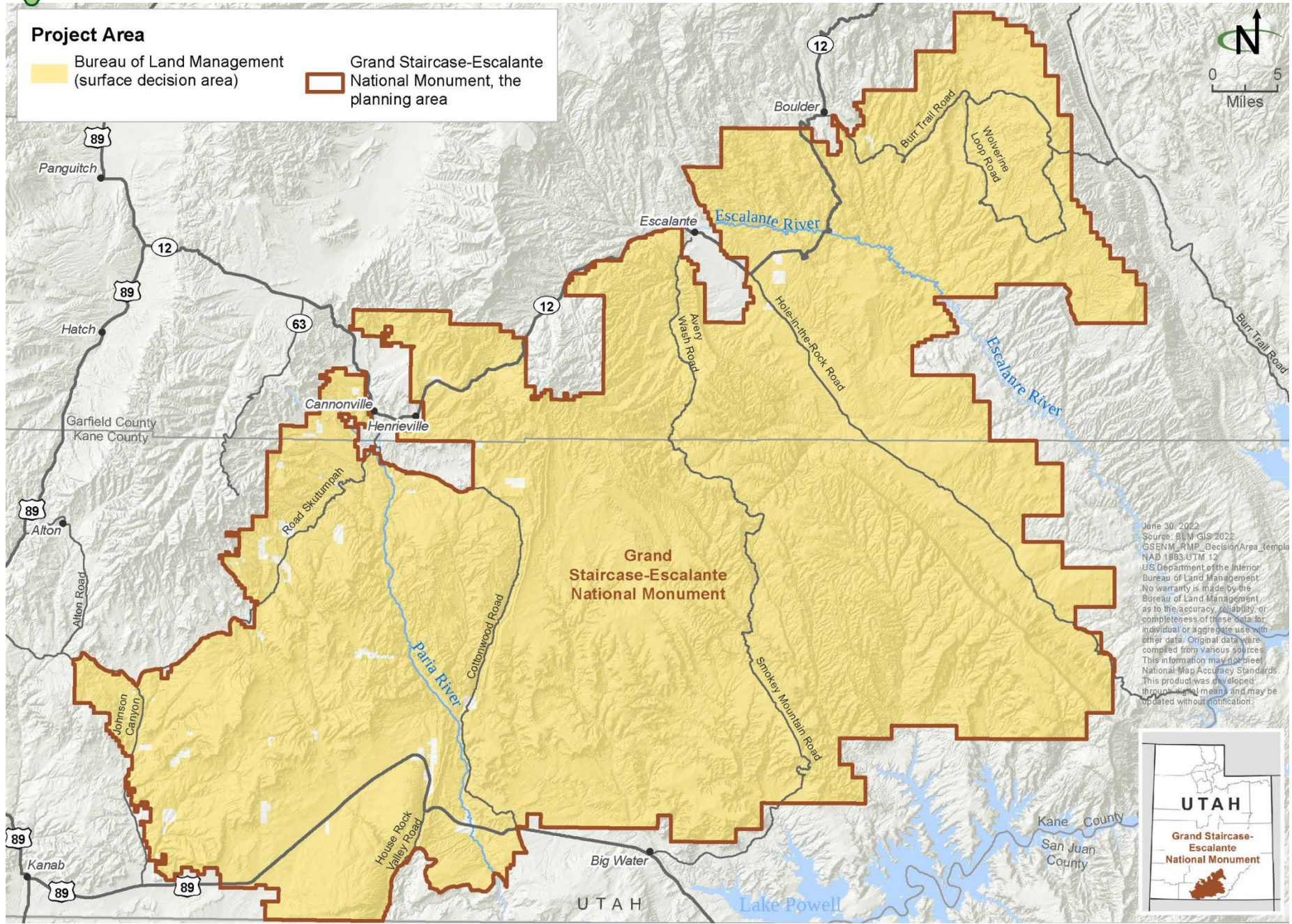
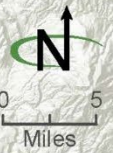
# Alternatives

- Alt A: No Action
- Alt. B: Current Management (GSENM RMP applied to entire boundary, discard KEPA RMP)
- Alt. C: Emphasizes flexibility in planning level direction to maximize the potential for an array of discretionary actions.
- 
- Alt. D: Emphasizes protection of intact and resilient landscapes using a zonal management approach to carefully allow for discretionary uses in appropriate settings.
- Alt. E: Emphasizes/Maximizes Natural Processes



### Project Area

- Bureau of Land Management (surface decision area)
- Grand Staircase-Escalante National Monument, the planning area



June 30, 2022  
 Source: BLM GIS 2022  
 GSENM\_RMP\_DecisionArea\_Template  
 NAD 1983 UTM 12  
 US Department of the Interior  
 Bureau of Land Management  
 No warranty is made by the  
 Bureau of Land Management  
 as to the accuracy, reliability or  
 completeness of these data for  
 individual or aggregate use with  
 other data. Original data were  
 compiled from various sources.  
 This information may not meet  
 National Map Accuracy Standards.  
 This product was developed  
 through digital means and may be  
 updated without notification.





# Stakeholders

## Tribal Consultation

All Pueblo Council of Governors  
Kaibab Band of Paiute Indians  
Navajo Nation  
Paiute Indian Tribe of Utah  
Pueblo Acoma  
Pueblo of San Felipe  
Pueblo of Tesuque  
Zuni Tribe of the Zuni Reservation, New Mexico  
San Juan Southern Paiute Tribe of Arizona  
Hopi Tribe of Arizona  
Ute Indian Tribe of the Uintah and Ouray Reservation  
Shivwits Band of Paiute Indians

## Elected Officials

Senators Mike Lee & Mitt Romney (UT)  
Representatives Chris Stewart (UT-02-R), Blake Moore (UT-01-R), John Curtis (UT-03-R), Burgess Owens (UT-04-R)

## State and County

Kane County Commission  
Garfield County Commission  
Utah's Public Lands Policy Coordination Office  
School and Institutional Trust Lands Administration  
Utah State Historic Preservation Office

## Federal Agencies and NGOs

National Park Service  
Glen Canyon Recreation Area  
Grand Canyon Trust  
Grand Staircase-Escalante Partners  
Southern Utah Wilderness Alliance  
Utah Rock Art Research Association  
Old Spanish Trail Association  
Hole-in-the-Rock Association  
Western Watersheds Project

## Grand Staircase-Escalante National Monument Advisory Committee



# Consulting Parties

## **Federal Agencies and NGOs**

- Kane County Commission
- Garfield County Commission
- Utah's Public Lands Policy  
Coordination Office
- Utah State Historic Preservation  
Office
- National Park Service
- Glen Canyon Recreation Area
- Grand Canyon Trust
- Grand Staircase-Escalante Partners
- Southern Utah Wilderness Alliance
- Utah Rock Art Research Association
- Old Spanish Trail Association
- Hole-in-the-Rock Association
- Western Watersheds Project



# Planning to date

- Inventory Monument objects and values by Dec. 16, 2022.
- The Monument Advisory Committee (MAC) met to discuss MAC roles/responsibilities and participation in planning process, July 12, 2022.
- The MAC met again on December 13, 2022. and was given a planning status update.

The BLM published the Notice of Intent (NOI) to prepare a new Resource Management Plan and Environmental Impact Statement on July 29, 2022.

- Publication of the NOI initiated a 60-day public comment period that concluded Sept. 27, 2022.
- Two virtual public meetings held on Aug. 17 and Aug. 30, 2022.
- Three in-person public meetings held on Aug. 24, Aug. 31, and Sept. 7, 2022.
- The Analysis of the Management Situation (AMS) released on Aug. 26, 2022.
- AMS forwarded to MAC for review and comment on Aug. 29, 2022.
- MAC provided input for the AMS on Oct. 18, 2022.
- There has been three cooperating agency meetings to date. One more in January 2023.
- A Tribal meeting was held in November 2022. Another meeting will be held in January 2023.



# Preliminary planning concerns

- Science ([both Basic and Applied](#))
- Special Land Designations for Conservation and Protection
- Cultural Resource Management, Native American Religious Concerns, and Tribal Use
- Climate Change and Air Quality
- Landscape Characteristics including Visual Resources, Scenery, Dark Night Skies, and Natural Soundscapes
- Environmental Justice, and Social and Economic Values
- Fuels, Wildfire and Prescribed Fire, and Forestry and Woodlands
- Hydrology (Groundwater, surface water, wetlands, riparian areas, floodplains, water quality)
- Lands and Realty
- Paleontological and Geological Resources
- Recreation Use and Visitor Services
- Minerals
- Terrestrial Habitat, and Vegetation Resilience and Conservation
- Noxious Weeds and Invasive Non-native Plants
- Rangeland Health and Livestock Grazing Management
- Wildlife and Fisheries
- Access Management
- Soils and Biological Soils Crusts



U.S. Department of the Interior  
Bureau of Land Management

# Thank you! Questions?







U.S. Department of the Interior  
Bureau of Land Management

# Wild Horse and Burro Program



**V. Gus Warr**  
**Wild Horse and Burro Program Manager/WHB Branch Chief**  
**BLM Utah State Office**



**VERY  
Complex,  
Emotional,  
and  
Divisive  
Program**

## On-the-ground Management

Off-Range Corrals & Pastures

Animal Care: Comprehensive Animal Welfare

Gathers/Removals

Long & short-term Planning

Adoptions

Sales/Transfers

Law Enforcement  
Actions

Politics

Animal Compliance

Partnerships  
& Proposals

Current Initiatives

New or Reoccurring Headlines or Controversies



# WHB Program Goals



- Maintain healthy herds on healthy rangelands
- Ensure the health and welfare of animals in our care
- Place excess animals into good homes



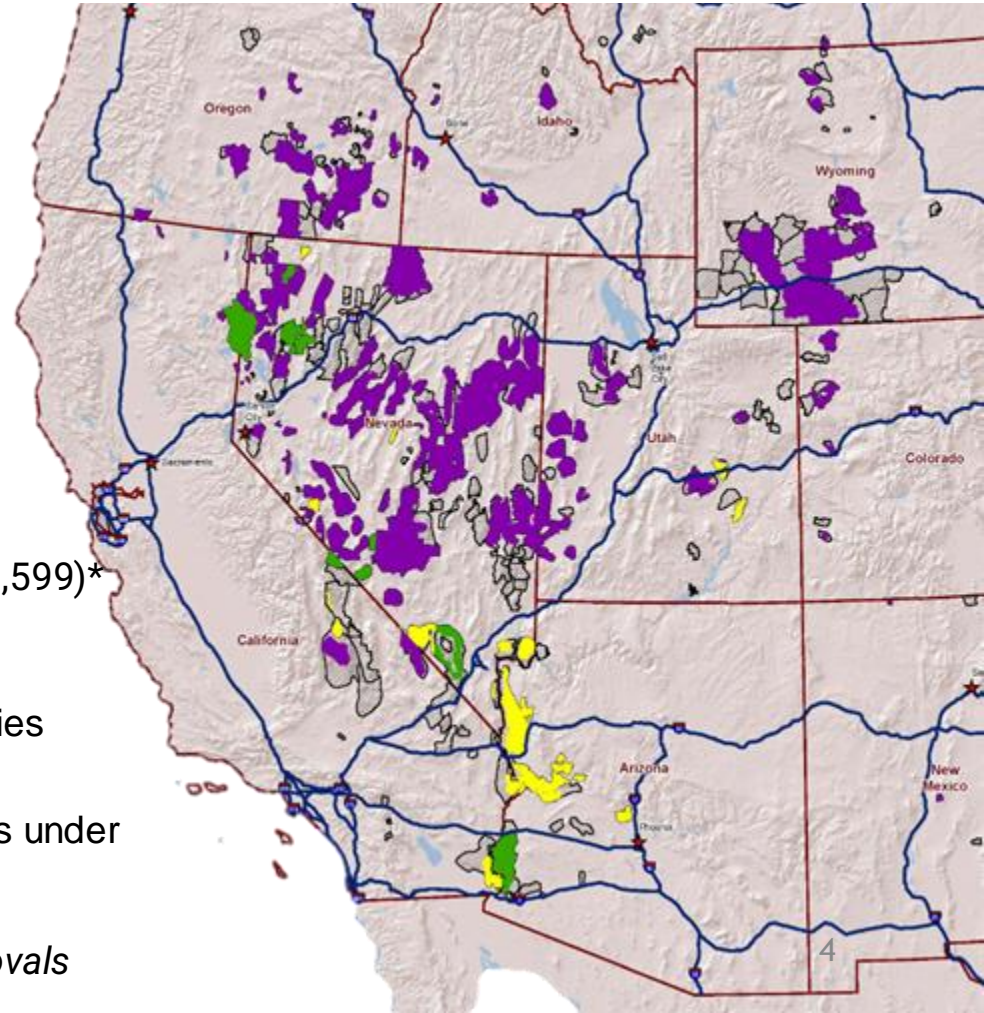


# Wild Horse and Burro Program



- **177** herd management areas
- **26.9** million acres of public lands
- **10** western states
- **26,785** appropriate management level
- **82,384** current population estimate **on-range** (+55,599)\*
- **64,369** excess animals in **off-range** holding facilities
- **119,968** total excess animals under BLM Management

\* = Does not include 2022 foals or removals



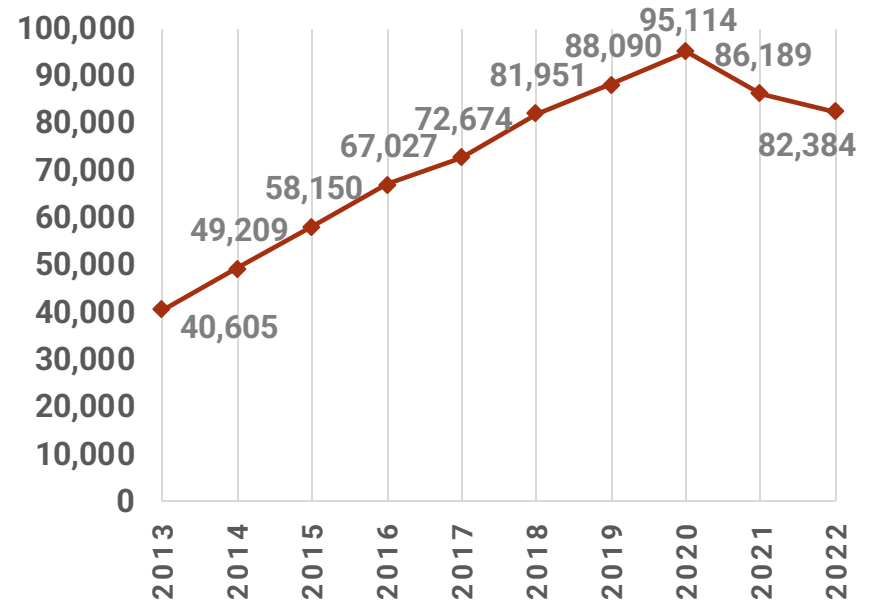


# Estimated On-Range Population Size

Estimated Wild Horse and Burro Populations on  
BLM-managed Public Lands as of March 1, 2022

State	Total	Max. AML	Excess
Arizona	9,496	1,676	7,820
California	10,140	2,200	7,940
Colorado	1,873	827	1,046
Idaho	555	617	-62
Montana	195	120	75
Nevada	46,570	12,811	33,759
New Mexico	272	83	189
Oregon	4,532	2,700	1,832
Utah	4,017	1,956	2,061
Wyoming	4,734	3,795	939
<b>Total</b>	<b>82,384</b>	<b>26,785</b>	<b>55,599</b>

Estimated Wild Horse and Burro Populations on  
BLM-managed Public Lands, 2013-2022





# Management: On-Range

## Gathers and Removals



- Principal tool used for reducing overpopulated herds; operations performed by way of helicopters and bait traps
- Gathers are conducted for one of several reasons: emergencies, court orders, nuisance animals, T&E impacts, resource conditions, AML, CTHR, and research.





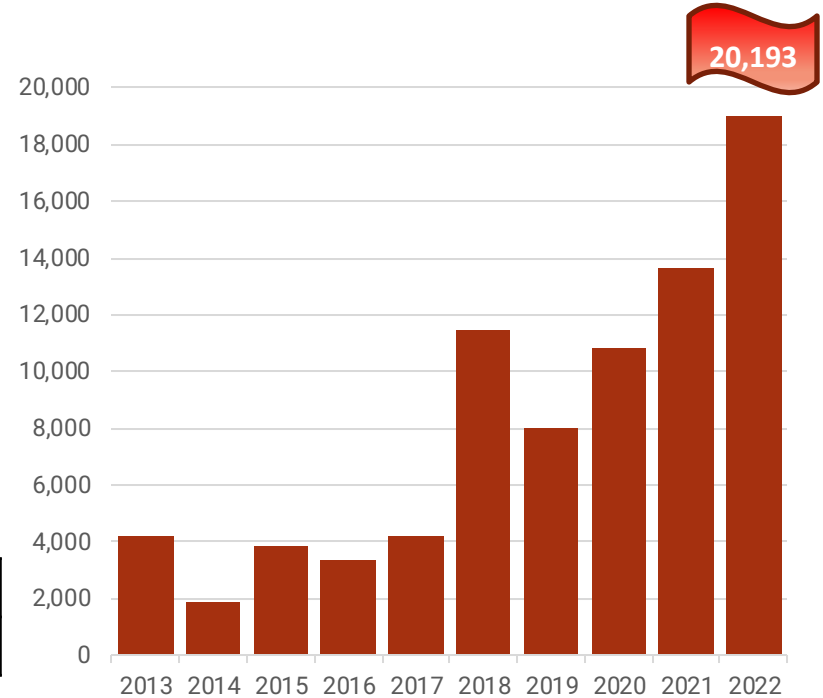
# Management Tools:

## Gather and Removals

- Only effective way to reduce overpopulation
- BLM has increased removals in last five years to control populations
- Gathers are necessary to apply fertility control in many HMAs

Animals Gathered '22	Animals Removed '22
21,999	20,193

Wild horse and burro removals, 2013-2022



# Management: On-Range

## Population Growth Suppression

- Vaccines (currently in use PZP, PZP-22 and **Gonacon**) are administered during gather operations.
- Darting programs occurring in 7 states, with 614 animals darted in FY-22.
- Intrauterine devices being applied Utah & Wyoming!
- Sex-ratio adjustments.





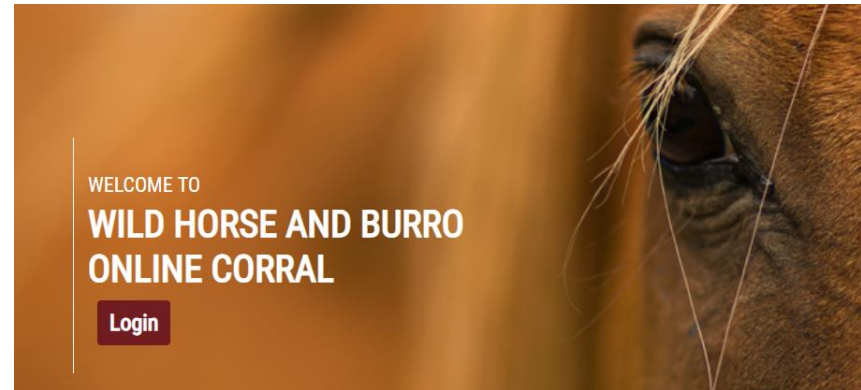


# Management: Off-Range

## Adoptions and Sales



- Excess animals removed from the range are placed into private care either through adoption, sale or transfer
- Adoption and sale events are held at BLM facilities, off-site events or online
- Number of animals placed into private care have increased over the past 5-6 years



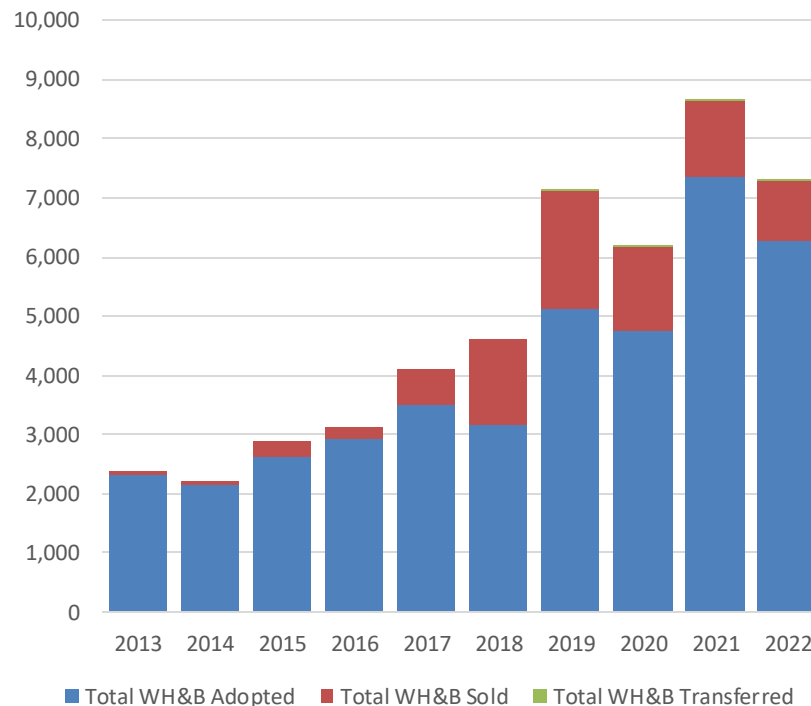


# Management Tools:

## Adoptions & Sales

- Placements of animals into private care have increased
- Fueled primarily by incentive program, Online Corral and success of partners like Mustang Heritage Foundation

'22- Private Placements	'22 Compliance Inspections	'22 Animals Titled
7,793	7,073	5,368





# Management: Off-Range



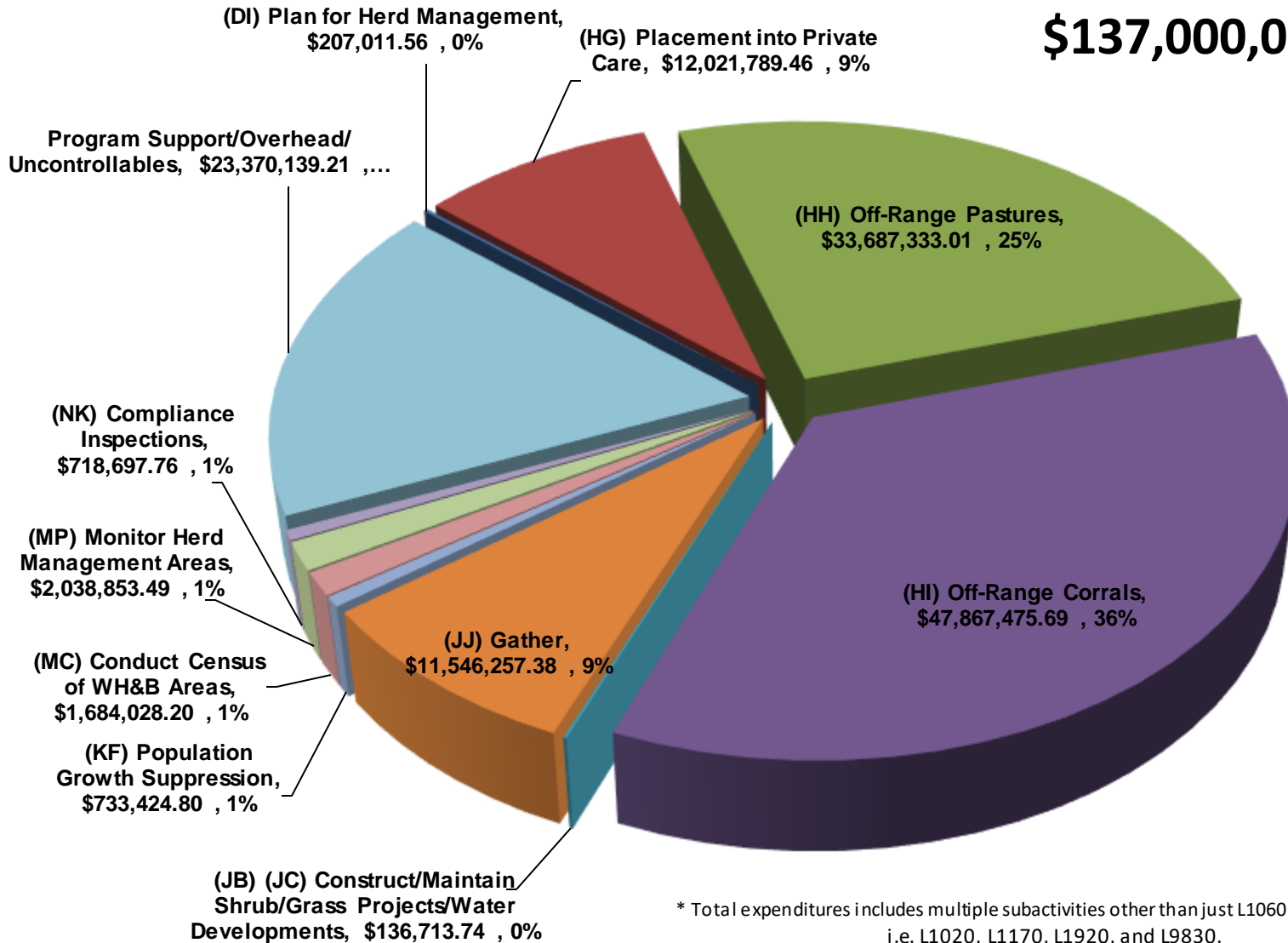
## Incentives and Partnerships



- Adoption Incentive Program offers \$1,000 to adopt an untrained wild horse or burro
  - Awarded at the time of title, one year after adoption
- Gentled and trained animals offered through partnerships and contracts such as Mustang Heritage Foundation and inmate training programs

# FY 2022 Expenditures \*

## \$137,000,000



\* Total expenditures includes multiple subactivities other than just L1060 (WHB Program), i.e. L1020, L1170, L1920, and L9830.

**FY-2023 Omnibus Bill Funding: \$147.9 M (+\$10.8 M)**



# UTAH

## WILD HORSES & BURROS

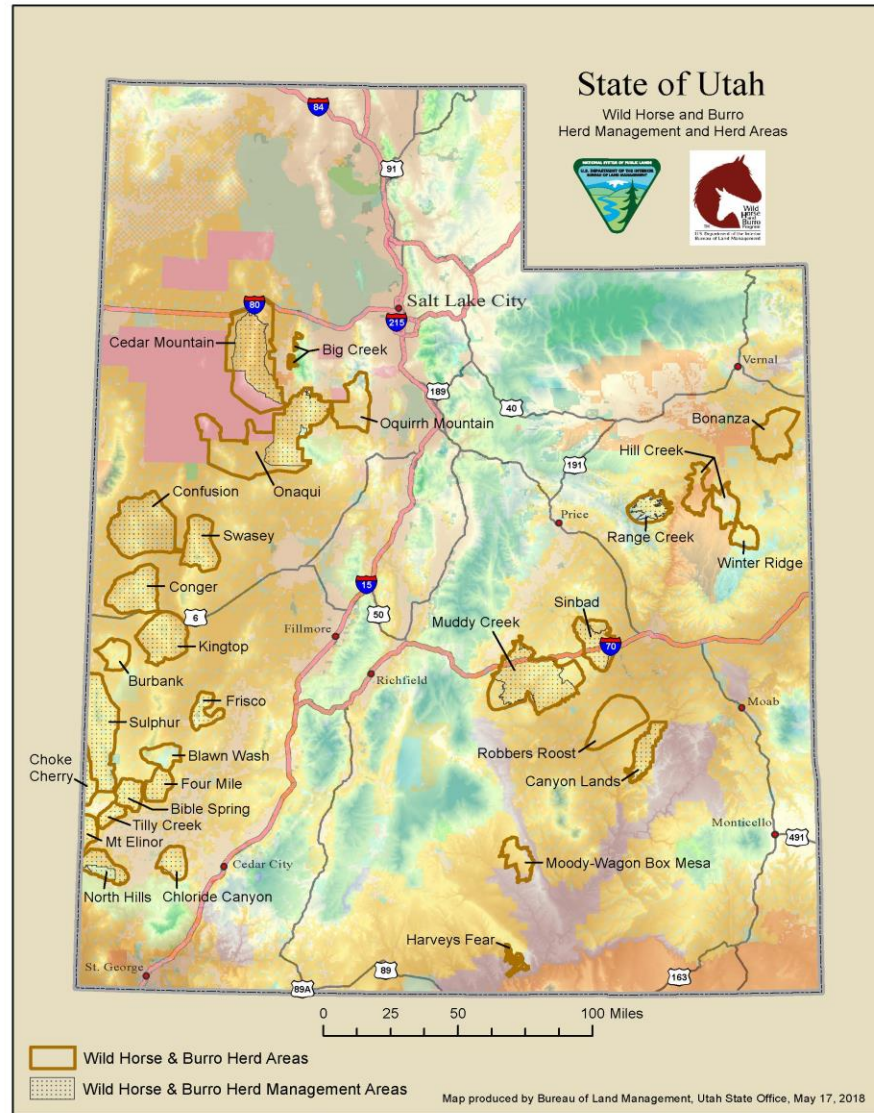


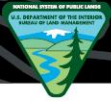


# Utah WH&B Areas



- 19 - Herd Management Areas (HMA)
  - 17 horses
  - 2 burros
- 10 - Herd Areas (HA)
  - All horses
  - 3 with zero populations





# Utah - Wild Horse & Burros

***Estimate As of October 01, 2022***

- Current Estimated Populations = **3,239 animals**  
(November 2019: Over 6,000!)
  - ✓ 2,866 wild horses
  - ✓ 373 wild burros
- UTAH AML = 1,956  
(1,786 for Horses & 170 for Burros)



# Past, Current and Planned WH&B Removals

- FY-15: **132** horses
- FY-16: 134 burros & 475 horses – **609 Total**
- FY-17: **1,000** horses
- FY-18: **1,128** horses
- FY-19: **419** horses
- FY-20: 36 burros & 1,978 horses – **2,014 Total**
- FY-21: **1,074** horses
- FY-22: 153 burros & 1,113 horses – **1,266 Total**
- FY-23: **??????????**





# Questions ?



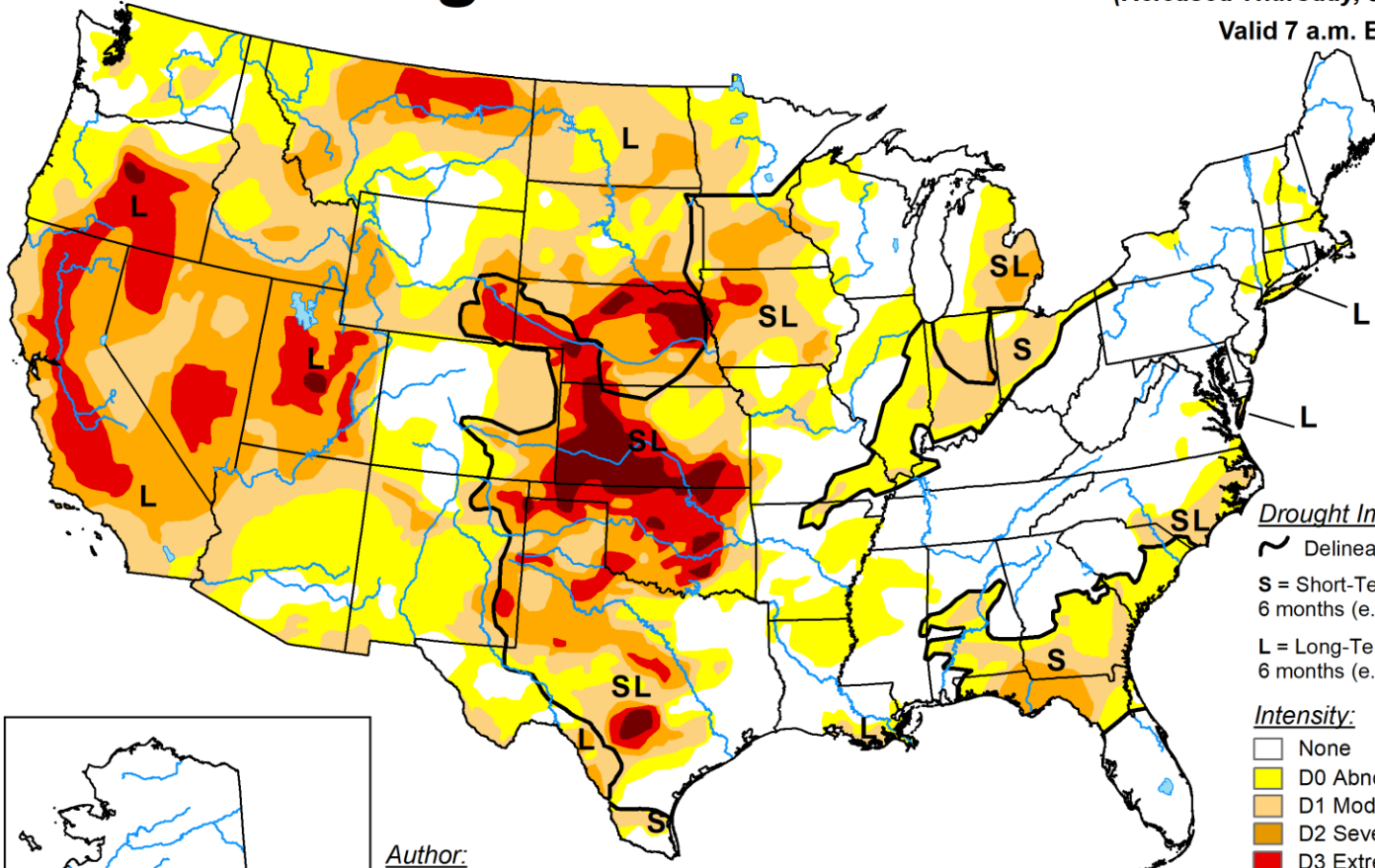


# U.S. Drought Monitor

January 3, 2023

(Released Thursday, Jan. 5, 2023)

Valid 7 a.m. EST



### Drought Impact Types:

Delineates dominant impacts

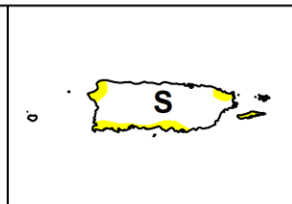
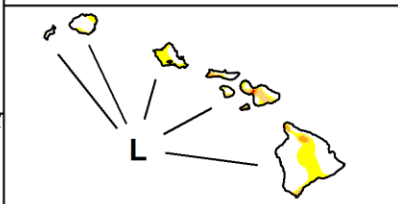
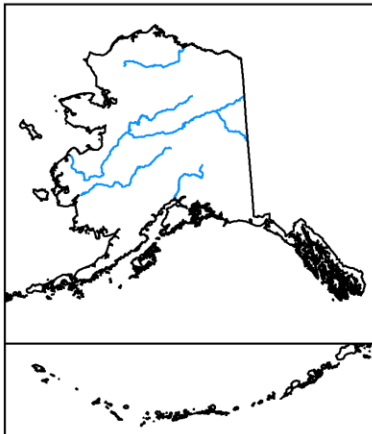
**S** = Short-Term, typically less than 6 months (e.g. agriculture, grasslands)

**L** = Long-Term, typically greater than 6 months (e.g. hydrology, ecology)

### Intensity:

- None
- D0 Abnormally Dry
- D1 Moderate Drought
- D2 Severe Drought
- D3 Extreme Drought
- D4 Exceptional Drought

Author:  
Brad Pugh  
CPC/NOAA



The Drought Monitor focuses on broad-scale conditions. Local conditions may vary. For more information on the Drought Monitor, go to <https://droughtmonitor.unl.edu/About.aspx>



[droughtmonitor.unl.edu](https://droughtmonitor.unl.edu)





# Wild Free-Roaming Horses and Burros Act of 1971



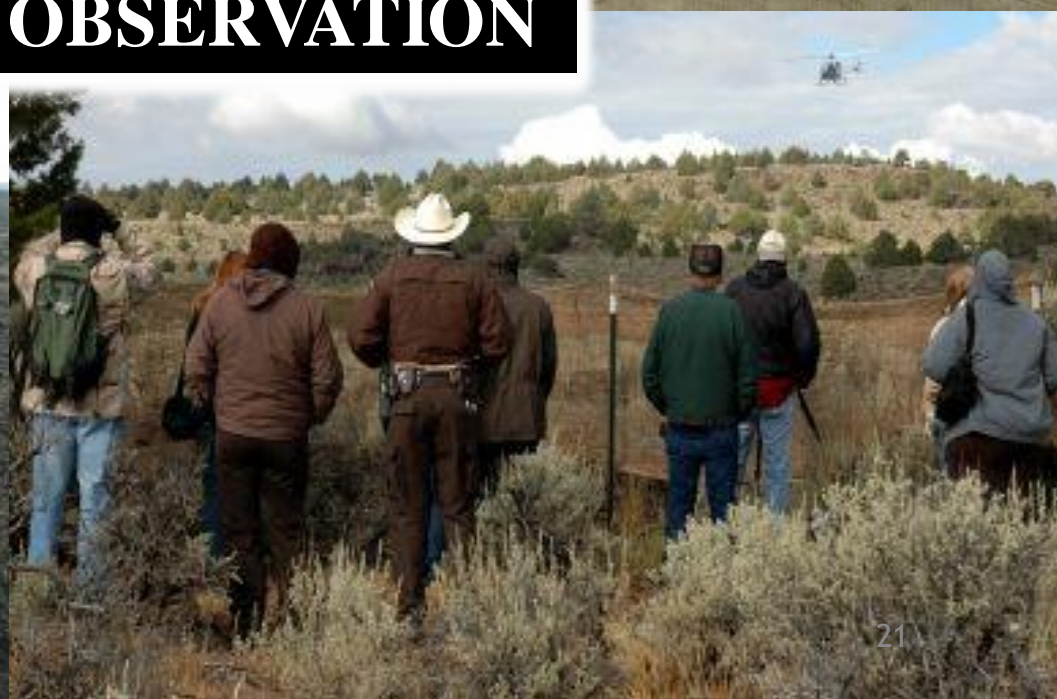


# The "Other Side" of the WFRHB Act of 1971





**PUBLIC OBSERVATION**





U.S. Department of the Interior  
Bureau of Land Management

# BLM Utah Lands & Minerals Division





# **BLM UTAH – Energy Programs**

- **Renewable Energy (Lands and Realty)**
  - **Solar**
  - **Wind**
  - **Geothermal (Fluid Minerals)**
- **Oil and Gas (Fluid Minerals)**
- **Coal, Gypsum, Sand and Gravel, etc., (Solid Minerals )**



# RENEWABLE ENERGY



## RENEWABLE ENERGY

- WIND
- SOLAR
- GEOTHERMAL





# RENEWABLE ENERGY

- 6 PENDING SOLAR APPLICATIONS – BLM UTAH
  - Crystal Peak Solar
  - Deseret Solar
  - Minersville Solar
  - Neptune Solar
  - Oak Creek Solar
  - Star Range Solar
- 4 PENDING WIND/TESTING APPLICATIONS – BLM UTAH
  - Clear Spot Wind Farm
  - Aquilo
  - G2
  - Thira Testing
- 3 PENDING GEOTHERMAL APPLICATIONS
  - Cape Modern
  - Ormat Bailey Mountain
  - Roda Therm



# LANDS & REALTY

## Rights-of-Way/Land Use Authorizations

### MAJOR RIGHTS-OF-WAY (ROW)

- \*TRANSWEST EXPRESS
- \*ENERGY GATEWAY SOUTH-BLM
- \*NW PIPELINE RENEWAL
- \*TRANSCANYON CROSS-TIE
- \*HORNSHADOW SOLAR GEN-TIE
- \*QUICKSILVER SOLAR GEN-TIE
- \*RC SOLAR GEN-TIE
- \*ZION SOLAR GEN-TIE





## COST RECOVERY - Processing Categories

Processing category	Federal work hours involved
(1) Applications for new grants, assignments, renewals, and amendments to existing grants	Estimated Federal work hours are $>1 \leq 8$
(2) Applications for new grants, assignments, renewals, and amendments to existing grants	Estimated Federal work hours are $>8 \leq 24$
(3) Applications for new grants, assignments, renewals, and amendments to existing grants	Estimated Federal work hours are $>24 \leq 36$
(4) Applications for new grants, assignments, renewals, and amendments to existing grants	Estimated Federal work hours are $>36 \leq 50$
(5) Master agreements	Varies
(6) Applications for new grants, assignments, renewals, and amendments to existing grants	Estimated Federal work hours are $>50$



# LANDS & REALTY

## Land Tenure: Land Exchanges, Acquisitions & Disposals

- Current legislative exchanges:
  - Dingell Act-PL 116-9
    - Hyde Park Patent issued 7/21/2020
    - Ashley Springs Patent issued 8/10/2020
    - Goblin Valley State Park Expansion Patent issued 6/17/2022
    - Emery City/County, Airport, Sheriff's Office conveyances Patents issued on 6/17/2022
    - SITLA Land Exchange (target completion is June 2024)
- Acquisition of inholding lands and recreation access (LWCF)





# LANDS & REALTY BRANCH

## **PUBLIC ROOM**

CUSTOMER CONTACT REPS ASSIST THE PUBLIC WITH :

- MAPS FOR OUTDOOR RECREATION
- MINING CLAIMS PAYMENTS
- AMERICA THE BEAUTIFUL PASSES
- GENERAL INFORMATION



## **LAND STATUS RECORDS**

- MAINTAINS MASTER TITLE PLATS
- UPDATES HISTORICAL INDEXES
- COORDINATES WITH FIELD OFFICES ON LAND STATUS





# Fluid Minerals - Oil and Gas Leasing

## **Fiscal Year 2022 (10/1/21-9/30/22)**

- No Oil and Gas Lease Sales were held
- 169 wells were spudded (initial startup of drilling operations for a new well).

## **Fiscal Year 2023**

- 2023 Q3 Lease Sale - Sept. 26, 2023
- 2023 Q4 Lease Sale - Dec. 12, 2023





# Fluid Minerals - Oil and Gas

Implementation of the Inflation Reduction Act (IRA) (P.L. 117-169) of 2022

BLM HQ issued a series of new Instruction Memorandas on November 21, 2022

- **IM 2023-006** *Implementation of 50265 in the IRA for Expressions of Interest for Oil and Gas Lease Sales.*
- **IM 2023-007** *Evaluating Competitive Oil and Gas Lease Sale Parcels for Future Lease Sales.*
- **IM 2023-008** *Impacts of the IRA of 2022 to the Oil and Natural Gas Leasing Program.*
- **IM 2023-009** *Discretion to Grant Oil and Gas Lease Reinstatements.*
- **IM 2023-010** *Oil and Gas Leasing Land Use Planning and Lease Parcel Reviews.*
- **IM 2023-011** *Approved Application for Permit to Drill Extensions.*
- **IM 2023-012** *Suspensions of Operations and/or Production.*





# OIL & GAS PERMITTING

## Application for Permit to Drill

**\$11,805 fee per ADP**

- **Onsite Field Trip**
  - BLM Field Office staff participates to ensure proposal is viable.
- **Approval: 2 years to drill a well**
- **Inspections: Operations & Production**





# Geothermal Leasing and Permitting

- Utah has three geothermal power plants:
  - 39-megawatt Blundell plant,
  - 23-megawatt Cove Fort 1 plant
  - 12-megawatt Thermo No. 1 near Milford and Sulphurdale, Utah.
  
- Over the last 3 years, increases from Industry to acquire Geothermal Leases.
  - 51 active Geothermal Leases, 114,267 acres
  - 1 unit and 7 producing leases, 7,569 acres

## Fiscal Year 2022

- April 12, 2022 Geothermal Lease Sale
  - All 11 leases issued, 31,476.42 acres

## Fiscal Year 2023

- Geothermal Lease Sale on Jan. 24, 2023
  - 2 USFS parcels, 3,045 acres





# Geothermal Permitting

## Exploration

- Indicates whether underground geothermal reservoirs are capable of supporting commercial uses.
- Involves surveying, data collection/analysis, drilling of temperature gradient wells, construction of related access roads and trails, and cross-country transit by vehicles over public land.
- Typically takes between 1 and 5 years.

## Drilling

- Consists of the drilling of exploration wells to test the reservoir.
- Includes flow testing, and producing geothermal fluids for chemical evaluation or injecting fluids into a geothermal reservoir.
- Requires large equipment and transportation of the equipment to and from the site, as well as frequent transport of workers to the site.

## Utilization

- Consists of the operation and maintenance of the geothermal fields and the generation of electricity.
- Involves development of infrastructure needed for commercial operations, such as access roads, buildings, electrical generation facilities, well fields, pipelines, meters, substations, and transmission lines.
- Typically lasts from 10 to 50 years.

## Reclamation and Abandonment

- Involves abandoning wells after production ceases and reclaiming all disturbed areas in conformance with BLM and USFS standards.
- Abandonment includes plugging, capping, and reclaiming the well sites.
- Reclamation consists of removing the power plant and all surface equipment and structures, regrading to pre-disturbance contours, and replanting native or appropriate vegetation to facilitate natural restoration.



# COAL PROGRAM

- 48 Leases
- 6 Active Mines
  - 5 underground mines in Price Field Office
  - 1 surface mine in Kanab Field Office
- Calendar Year 2021
  - Utah Federal coal production 10,934,769 tons
    - Third largest production in BLM
  - Utah Federal coal revenue \$17,877,731
    - Second largest revenue in BLM





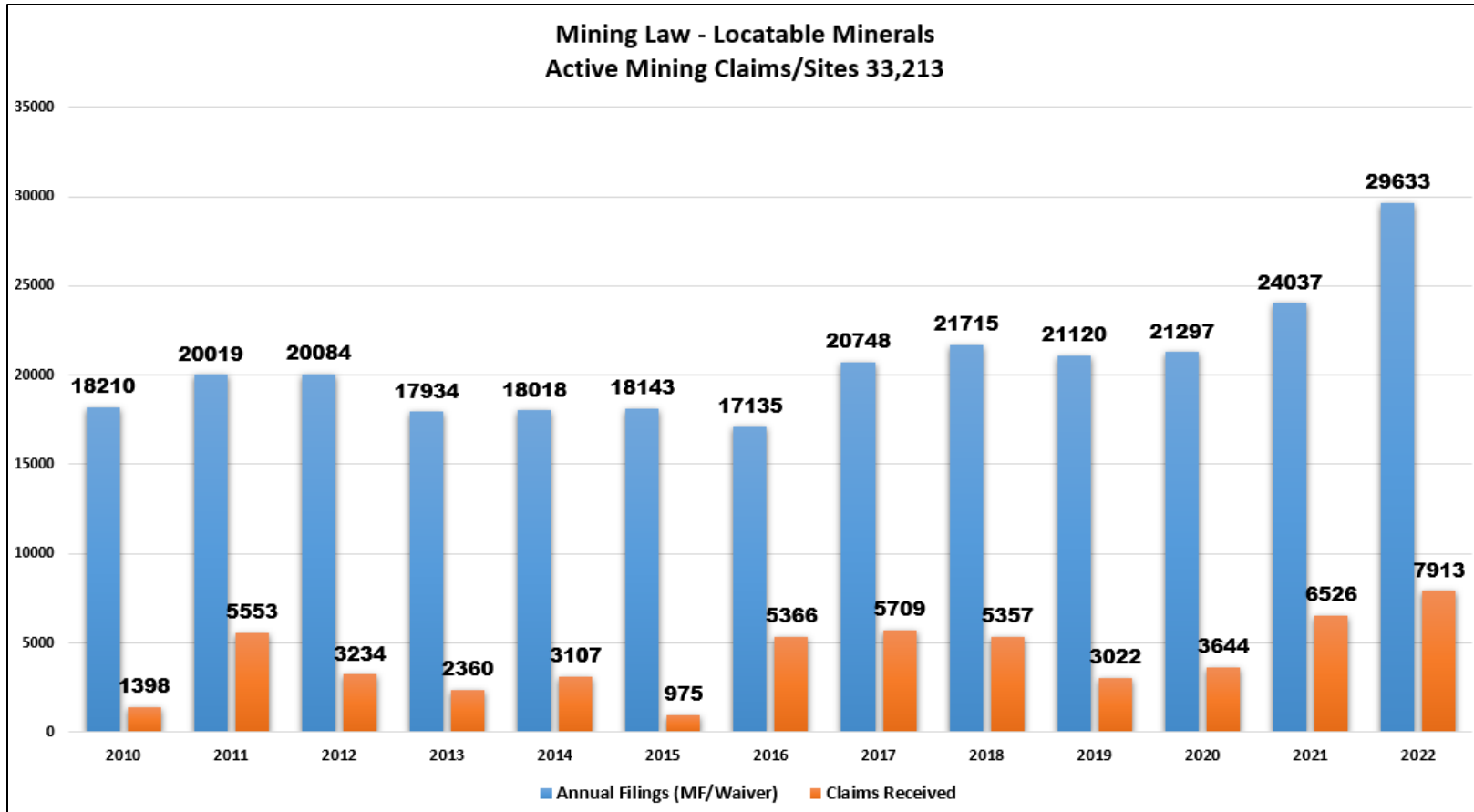
# Other Leasable Minerals

- **Potassium (Potash)**
  - 75 Leases
  - 116 Pending Prospecting Permits
- **Gilsonite**
  - 17 Leases
  - 21 Pending Prospecting Permits
- **Phosphate**
  - 4 Leases (Salt Lake and Vernal Field Office)
  - 36 Pending Prospecting Permit Applications
  - Fringe acreage lease Vernal Field Office





# MINING CLAIM ACTIVITY IN UTAH



"Active" includes claims in an Active, Appeal-Stay Granted, Filed, On Appeal, Pending, Submitted, or Under Review Disposition, if any.



# Abandoned Mine Lands

- Approximately 14,000 abandoned mines (a statewide inventory hasn't been completed)

## BLM Collaborates with:

- UT Abandoned Mine Reclamation Program (Grant)
  - Completed **81 closures in FY22**
  - Planned **FY2023 – 201 closures**
- EPA: FY22-23 Time Critical Removal Action (CERCLA) in Lisbon Valley
- USGS (IAA) and Freeport McMoRan (PRP)
  - DOE Drum Program: inventory and reclamation of legacy uranium mines.

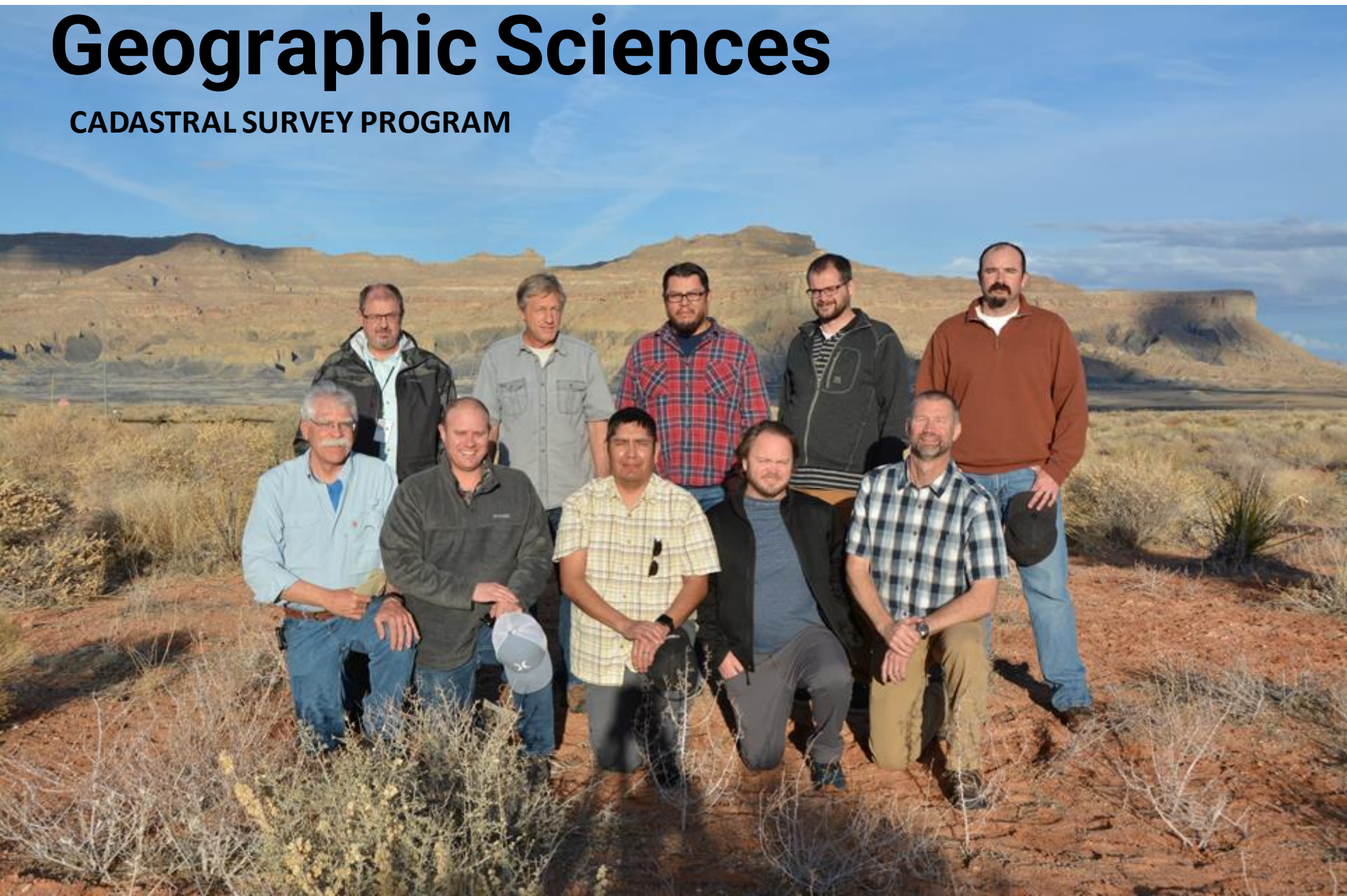




U.S. Department of the Interior  
Bureau of Land Management

# Geographic Sciences

CADASTRAL SURVEY PROGRAM





# If you don't know where your boundaries are, how can you be a land manager?



- Field Surveyor in each District.
- Records Access & Approval (plat & field note)
  - Delegated from the BLM Director to Cadastral Chief
- Public Land Survey System Data Set
  - Updated Statewide for mapping & survey needs
- Land Surveyor Reports
  - For all legal descriptions required
- Other Federal Agency Boundaries
  - BLM Indian Lands Surveyor, at BIA Regional Offices







U.S. Department of the Interior  
Bureau of Land Management

# QUESTIONS?



U.S. Department of the Interior  
Bureau of Land Management

# Travel Management Planning

January 2022 BLM Utah Resource Advisory Council





# Travel Management Overview

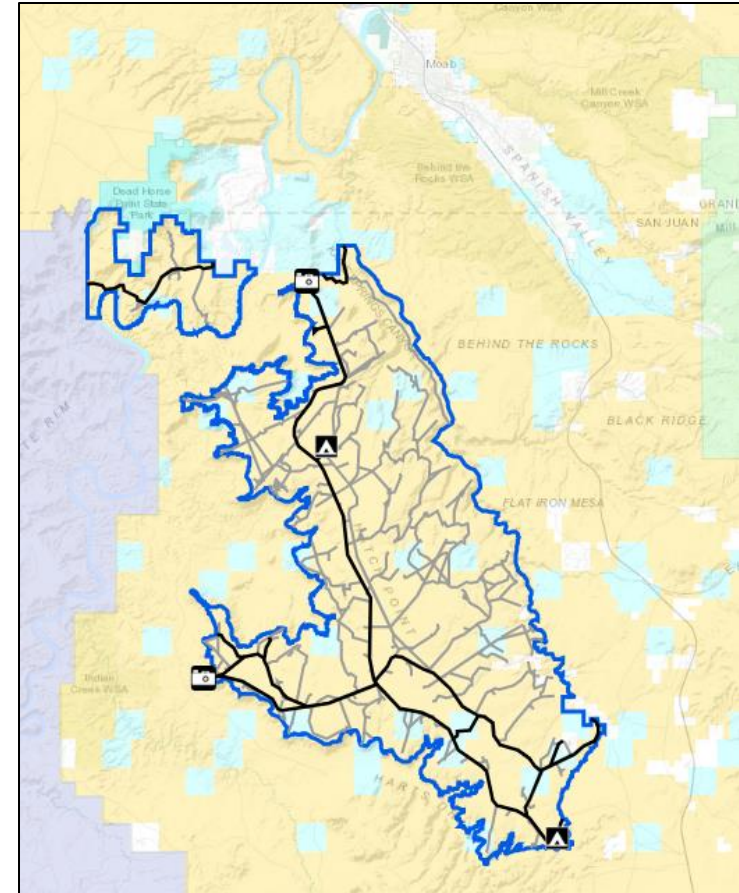
- Creating a sustainable travel network for all modes of travel on public lands
- Land use plan decisions (Open, Closed, **Limited**)
- Implementation level decisions for **Limited**





# Implementation Level Decisions

- Travel Management Plans for “Limited” Areas
- Designate routes as open, closed, or limited.
- Detailed inventories and surveys
- Balancing access, safety, and resources
- Internal and external input





# Minimization Criteria

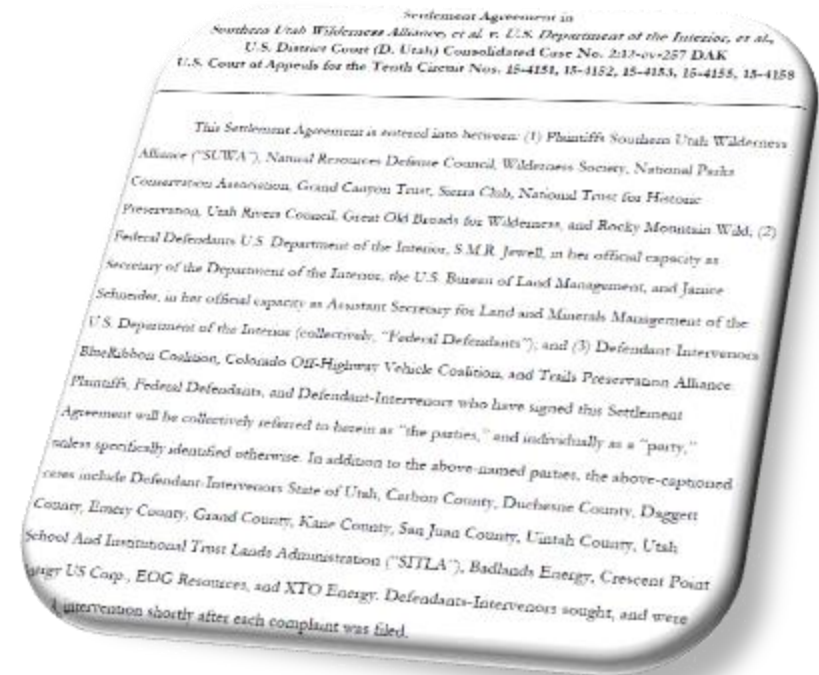
43 CFR § 8342.1 requires that OHV routes shall:

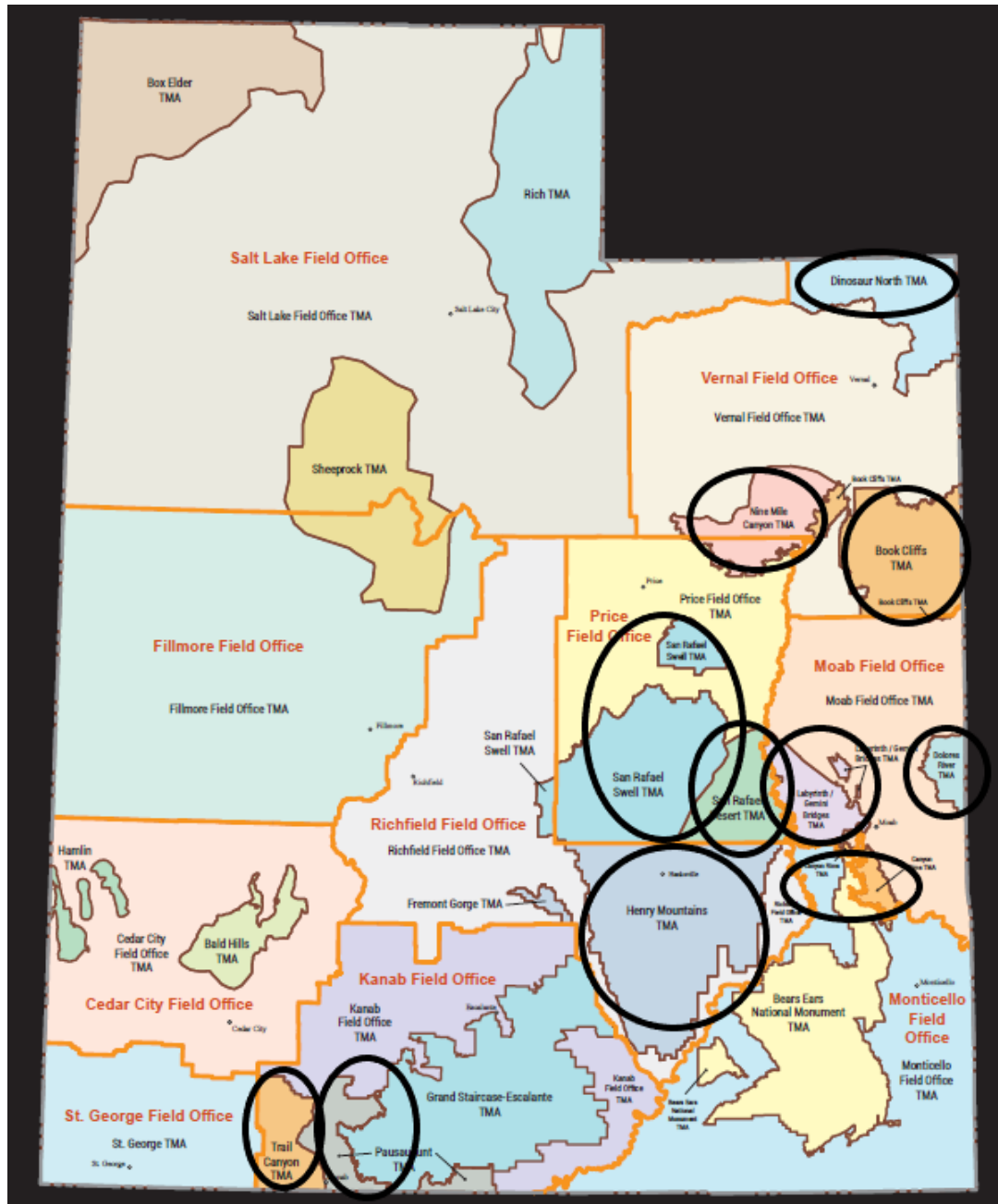
- Minimize damage to **soil, watershed, vegetation, air, and other resources**
- Prevent impairment of **wilderness suitability**
- Minimize impacts to **wildlife/wildlife habitats**
- Protect **listed species**
- Minimize impacts to **other recreational uses** in vicinity



# 2017 Settlement Agreement

- Litigation re: six 2008 RMPs
  - Kanab, Moab, Monticello, Price, Richfield, and Vernal
- BLM agreed to develop 11 new Travel Management Plans (for OHV use, with deadline)
  - And several other commitments







# Status

- Complete (2 of 11)
  - Canyon Rims
  - San Rafael Desert
- Scoping Initiated
  - All but three TMPs
- Public comment periods in 2023
- Finished by 2025







# Questions





U.S. Department of the Interior  
Bureau of Land Management

# Dingell Act Updates for the Green River District

The John D. Dingell, Jr. Conservation, Management, and Recreation Act – 2023





# Dingell Act Refresher

---

The John D. Dingell, Jr. Conservation, Management and Recreation Act:

- Land Conveyances
- Land Exchanges
- Designation of :
  - 17 Wilderness Areas
  - Wild, Scenic, and Recreational River Segments
- Release of Wilderness Study Areas
- Establishment of:
  - San Rafael Swell Recreation Area and Recreation Area Advisory Council (RAAC)
  - McCoy Flats Trail System
  - John Wesley Powell National Conservation Area
  - Jurassic National Monument

# Land Conveyances Status

---

- Ashley Springs – Completed August 10, 2020
- Goblin Valley State Park – Completed June 17, 2022
- Emery City Recreation Area - Completed September 14, 2022
- Huntington Airport – Completed September 20, 2022
- Emery County Sheriff's Office – Completed June 17, 2022
- Buckhorn Information Center – Completed June 17, 2022

\*\*Will need to complete Resource Management Plan (RMP) Maintenance for these conveyed lands (to remove from BLM acreage and management).





# 17 Wilderness Areas, Released WSA's, and Wild and Scenic River Segments Status

---

## Wilderness Areas:

- Initiated Baseline inventories
- Completed the inventory of Range Improvements
- A Portal Sign has been installed in each Wilderness Area

## All Areas:

- Plan Maintenance or an RMP Amendment will need to be completed for these designations





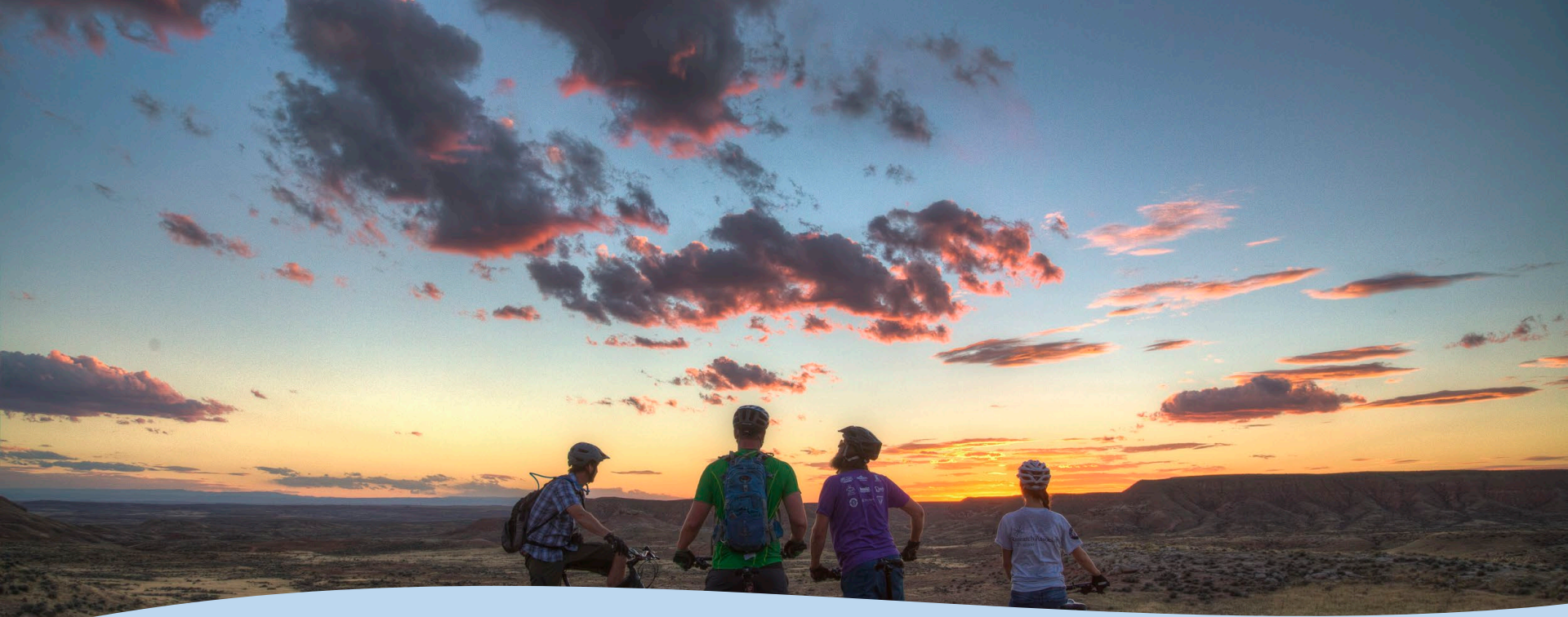
# San Rafael Swell Recreation Area and Recreation Area Advisory Council (RAAC) Status

## San Rafael Swell Recreation Area RMP Amendment (prioritized in the Price Field Office)

- Analysis of the Management Situation (AMS) is being prepared
- Alternatives Development
- Public Comment period on alternatives will follow

## The San Rafael Swell RAAC is currently recruiting 4 new members

- (1) An elected leader of a federally recognized Tribe that has significant cultural or historical connections to, and expertise in, the landscape, archeological sites, or cultural sites within the County;
  - (2) A representative of motorized recreational users
  - (3) A representative of non-motorized recreational users
  - (4) A representative of the Emery County Commission
- \*\*Meetings cannot be held until the RAAC has a quorum



# McCoy Flats Trail System

## McCoy Flats Trail System RMP Amendment (prioritized in the Vernal Field Office)

- AMS is being prepared
- Alternatives Development and Public Comment Period on alternatives



# John Wesley Powell National Conservation Area

---

## John Wesley Powell NCA RMP Amendment

- AMS is being prepared



# Jurassic National Monument

---

## Jurassic National Monument RMP Amendment

- BLM has initiated a draft of Management Plan.
- AMS for the Monument needs to be prepared.





## Other items common to all Plan Amendments

### Scoping Report

- Final report is scheduled to be posted to ePlanning Spring of 2023.

### Areas of Critical Environmental Concern (ACEC)

- Draft ACEC report has been completed and is being reviewed. Final Report is anticipated in a few months for release to the public.

### Recreation Management Areas (RMA) Report

- Draft of this report is being prepared.



Questions? |