

Utah Resource Advisory Council

Meeting Minutes

October 19, 2022, West Desert District Office

Meeting Attendees (* indicates virtual attendance)

Committee Members: Simeon Weston, William Cox, Clifton Koontz, Patrick Hearty, Joan Hayes, Richard Draney, Mike Worthen*, Ryan Benally*, Dean Draper, Tyler Thompson

Agency Employees: BLM: Greg Sheehan, Mike Gates, Nicollee Gaddis-Wyatt*, Harry Barber*, Ben Gaddis, Evan Glenn, Christopher Delaney, Gary Bishop, Mark Lawyer, Angela Hawkins, Tami Black*, Kelly Orr* **USFS:** Douglas Robinson, David Christensen* **DOI:** Claudia Merino*,

Logistics & Introductions

Greg Sheehan

- Introduction and welcome. Background on the West Desert District office building that opened in January 2022. It has been 1.5 years since we last met (May 2021). Since the last meeting we've had three people cycle off the RAC. We appreciate their service and time that they spent with us.
- There are four current vacancies and 15 total members. Names were submitted and we are waiting to have those filled. Hopefully by the next meeting.
- First order of business after introductions is to select a new chair.

Introductions of Members: Name, how long you've been on the RAC, who you represent.

- Ryan Benally- First time on the Utah RAC, prior service on another advisory committee representing Tribal interests. I have lived in San Juan County for my entire life. Approximately 92% of the county is public land.
- Mike Worthen- Will cycle off the RAC this coming spring. Lives in Cedar City and works closely with the Color Country District on wild horse and grazing issues.
- Pat Hardy- First year on the Utah RAC, represents historic and archeological interests.
- Dean Draper- First year on the Utah RAC. From Scipio, Millard County Commissioner. Familiar with most of the Fillmore Field Office.
- Sim Weston- First year on the Utah RAC. Rich County Commissioner represents grazing and has a couple of ranches in the county. Has BLM permits in both Utah and Wyoming.
- Richard Draney (Rick)- Second term, representing Category 2- Dispersed Recreation. Has been in Wayne County since 2006.
- Tyler Thompson- Happy to participate in the group.
- Bill Cox- Second term. Represents transportation and rights-of-way. Rich County Commissioner. Recently part of the national wildfire mitigation committee.

Meeting Minutes Template

- Clif Koontz- Second term. From Moab, advocate shared use recreation access, educates visitors, has done over 20,000 hours of trail work and mostly motorcycle trails. Represents developed recreation and off-highway vehicle interests.
- Joan Hayes- Second term. Lives in St. George. Represents outdoor recreation and off-highway vehicle. Has served on several boards and is current chairman of the St. George Jeep group.

RAC member discussion

A brief discussion about the charter today. We serve at the will at the Secretary of the Interior. The charter was updated and renewed last November (2021). Two things that the charter asks you all to do:

1. Develop recommendations regarding land use planning within the area in which your council is established.
2. Make recommendations regarding recreation fees. Federal Lands Recreation Enhancement Act (FLREA), charging fees on public lands and what the process is for adopting that and framework for what the fees are used for.

Next meeting is Jan. 18, 2023.

Two council members will be cycling off in May. We will only meet once more before Kenneth and Mike cycle off the Council.

Nominations for Chairpersons:

Bill Cox: Would like to nominate: Tyler Thompson as chair and Clif Koontz as vice-chair.

Nomination is seconded by Joan Hayes.

All in favor: Unanimous in favor for Tyler Thompson

Vice-chair Clif Koontz nomination seconded by Joan.

All in favor: Unanimous in favor for Clif as vice-chair.

- Need to adopt meeting minutes from May of 2021. Tyler Asks the RAC if they want to adopt the meeting minutes.
- Bill Cox motions to adopt minutes and is seconded by Rick Draney: All in favor of approving the minutes from May of 2021. Motion passes unanimously.

BLM Utah Priorities

Greg Sheehan, State Director

- Introduced new statewide BLM Communications Director, Christi Judd who serves in the Air Force Reserves as a captain and recently came back from Germany. Introduced Michelle Van Der Linden who was here on a detail from California Desert District. She also was a captain in the Air Force. Thank you both for your service.
- We have new managers across the state Jason West is the new Field Manager in St. George and Dave Mortenson is the new Field Manager in Richfield. Nicole Gaddis-Wyatt is now the District Manager for Canyon Country. Gary Torres has retired. Christina Price is the new Deputy State Director for Lands and Minerals. Kent Hoffman is retiring.

Meeting Minutes Template

- **Biden-Harris Administration Priorities**
 - Renewables: Solar lease sale and two geothermal lease sales in Millard County. Continue to work on wind projects.
 - Tribal relationships: Stewardship agreement with five Tribes, an increase in effort to reach out and work more closely with the Tribes than has been done in the past.
 - Restoration: Director Tracy Stone Manning is very interested in restoration and some dollars have come in to help.
 - Monuments: Just over one year ago, President Biden returned the Grand Staircase Escalante National Monument (GSENM) and Bears Ears National Monument (BENM) to their original state. The re-established boundaries require a resource management plan, through the EIS process.
- Other Utah-centric priorities: Dingell Act, passed in 2019, entailed land exchanges of about 115,000 acres of State Trust Lands and 96,000 acres of BLM-managed land in Utah. Continue to work on that exchange.
- Rulemaking: The BLM is currently working on several rule revisions, in the range of about 15 rules. Some are minor changes, some more significant including grazing, oil and gas and resource management.
- Sage-grouse: A revisit of sage-grouse plans is underway now. It doesn't affect Utah too much, but somewhat, as we have a small footprint of the Gunnison Sage-grouse. A couple of areas of habitat spill over into Utah in Grand County, largely being undertaken by Colorado BLM.
- Federal Legislation: Congress passed Great American Outdoors Act, which gave BLM a lot of money to invest in infrastructure, not create new, but really invest in already existing. It has been about a year ago when Bipartisan Infrastructure Law (BIL) passed to fund plugging of abandoned oil/gas wells that may be leaking methane gas. The BIL also had funding for fire programs that were much needed to keep fire programs funded and do fuels work across the land. Inflation Reduction Act gave dollars to the BLM to do landscape restoration.
- Wild Horse and Burro Program- BLM national just finished a successful horse gather year in which they gathered about 20,000 horses, the most ever that have been gathered by BLM. The program also adopted out about 7,000 horses and burros last year and will need to continue to adopt out.

RAC member questions/discussion: It has been one and a half years since we met as a RAC, with a seemingly insurmountable list. What would you say have been the most significant achievements over the last 1.5 years?

Sheehan: *Whenever you have a change of administration you have new priorities, some of the areas that we've had a keen focus on are efforts to increase and enhance renewable energy. One area that I haven't mentioned that it is a priority is trying to achieve diversity in the workplace. Make sure there is more diversity represented, that our workforce looks like our nation and our population.*

Presentations

BLM Utah RAC ethics training

Claudia Merino, Ethics Counselor

Meeting Minutes Template

- Purpose is to advise the Secretary of the Interior and BLM on matters relating to public lands and resources. Objective is to make available to the Department of the Interior (DOI) and BLM, the expert counsel of concerned and knowledgeable citizens.
- Coverage of protected classes
- Financial disclosures may be requested to ensure no conflict of interests.
- Coverage of charter
- Non-federal members direct/indirect interests: disclosures are required by BLM
- Specific party matter-examples: leases, licenses, permits, contracts, claims, grants, investigations, arrests, etc.
- Does not include rulemaking, legislation and formulation of general policy
- Direct and predictable effect on your own financial interests.
- Slide explaining predictable effect of financial interest
- Only advisory duties are restricted. You can act outside of your advisory duties, but you may not advise.
- If you have or believe you have direct/indirect interests, you need to notify your committee, the best way to do that is to look at the agenda beforehand if you need to recuse yourself.
- Contact the office of ethics if you have questions.

RAC Member Questions/Discussion

We have several persons who have grazing permits, they aren't approving land management plans, but our RAC is approving fees. Any advice for grazing permits, we did have RAC committee members in the past in Utah and they did have a grazing permit, they had to recuse themselves if they had to discuss fees increases, etc.

Tyler recommends contacting Greg and his staff if there are any upcoming agenda items that may be considered ethics violations.

[West Desert District planning](#)

Mike Gates, West Desert District Manager

- BLM relies heavily on the land use plans. The West Desert District has a unique situation and plans in the West Desert being adjacent to the Utah Test and Training Range.
- Explained the impacts of not planning.
- We are adjacent to 86% of the state's population. Opportunities presented by being close to the Wasatch Front include population growth and wildland urban interface.
- Land use plans are required by the Federal Land Policy and Management Act of 1976. (FLPMA).
- Requires systematic inventory of lands and approach that considers physical, biological, economic and other sciences.
- Plans developed through public input to keep lands healthy and productive and cover a high variety of terrain.
- Regulation 43 CFR 1600
 - Objective of resource management planning is to maximize resource values for the public
 - Resource management plans (RMPs) are designed to guide and control future management

Meeting Minutes Template

- Policy: Advance notice for environmental impact statement and scoping. Examples: proposed transmission lines, goes outside established corridor. Renewable Energy, land trades. All items we frequently get applications for in West Desert District.
- West Desert District planning history: all plans are over 30 years old.
 - Box Elder, Pony Express, House Range, Warm Springs (1987-1990)- Most recent
 - Randolph Management Framework (1980)-Rich County, unique to BLM Utah, has a rich abundance of natural resources.
 - Isolated tract planning analysis, Park City Management Framework Plan (1985, 1996)
 - Amendments to plans
 - Oil and Gas (1988-1989)
 - North Oquirrh Mountains (1997)
 - Box Elder (1998)
 - Fire Management Plan (1998 and 2005)
 - 2010 UNEV/Holly Pipeline
 - Greater sage-grouse (2015 and 2019)-stayed implementation
- Fiscal Year 2000 language included in Defense Authorization Act: restricted amendment of plans and set forth requirement for Department of Defense to do a readiness study.
- At that time (2000), BLM went to Department of Interior and asked for clarification. The solicitor's office said that planning is frozen in current form until completion of the Department of Defense study.
- In Fiscal Year 2006 Defense Authorization Act renewed and congress did not lift or remove the language. What was done was the creation of a new wilderness study area (Cedar Mountain WSA).
- Defense Lands language clarified the Utah Test and Training Range, four resource management plans could not be amended or revised if they were near the Utah Test and Training Range.

RAC Member Questions/Discussion

- Planning Moratorium, also referred to as planning restriction, etc.?
 - Yes.
- Adjust boundaries around Utah Test and Training Range to revise those planning areas?
 - Due to the nature of Utah Test and Training Range and Federal Aviation Administration/Military Training Routes it covers ground and aerial. It is almost impossible to adjust boundaries.
- Wilderness vs. Wilderness Study Areas (WSA): Who monitors the WSA and how long is it in effect and who removes the study?
 - 12 WSAs in West Desert District. All were put in place through Section 102 of Federal Lands Policy Management Act, Congress designated area. No length of time that Congress put in place and only Congress can change that designation.
 - If no one is checking on them, then who's studying it?
 - We still monitor the Wilderness Study Areas, and we still have a lot of things we do in those areas. The BLM works regularly with public on those areas. The Dingell Act changed some WSAs to wilderness and removed WSA designations in others.

Meeting Minutes Template

- Utah National Defense Lands: Military Operating Areas
 - Language in 2006 'under or near' places we cannot plan. e.g., Military Training Routes
 - Coordinate with Hill Air Force Base and Clearinghouse.
 - Large number of renewable energy applications particularly in Millard County.
- Successful for the Randolph Management Framework Plan Amendment.
- Next steps: RAC members address their constituents and explain to them why plans can or can't be done.
- Swaps within or outside of the Utah Test and Training Range?
 - Applied for funding for Randolph Management Framework Plan Amendment, statewide fire management plan.
 - Statewide with all the districts, we can amend a statewide plan, which does not include Wilderness or Wilderness Study Areas.
- Is there a future in which we can get over the planning restrictions?
 - The military makes it difficult to move forward.
- Looking for records on deeds/patents and the general land office on where to locate those records.
 - The Utah State Office and the General Land Office has those.

BLM Advisory Committees in Utah

Greg Sheehan, State Director

Nicolle Gaddis-Wyatt, Canyon Country District Manager

Harry Barber, Paria River District Manager

- San Rafael Recreation Area Advisory Council (RAAC)
 - Created as part of the Dingell Act.
 - Recreation area, south of Price, UT and runs to I-70.
 - Created some formal wilderness areas (17)
 - Seven seats on this advisory council. Similar to this RAC.
 - Tough to keep the RAAC filled.
 - Has several representations: Grazing, motorized and non-motorized users, conservation organizations, elected officials (county/Tribal).
 - Working through the process example is if the exchange has special resource matter that during the original exchange wasn't known can work through amendments and adjustments.
 - How does cultural impact this?
 - Inventories and assessments
 - Trades usually involve cultural for cultural
- Difference of San Rafael Swell Recreation Area Advisory Council and the other three, is the capacity to recommend specific actions related to campground fees whereas the Grand Staircase-Escalante National Monument Advisory Committee and Bears Ears National Monument Advisory Committee make recommendations related to the monuments.

Bears Ears National Monument Advisory Committee

- Established by Presidential Proclamation
- Charter was approved in fall 2018 and was updated in 2022 to with duty description clarifications and categories were redone to include three Tribal positions.
- Purpose is to provide insight and advice to the monument management plan. The MAC's input will be included into the planning and implementation of plans for the monument.
- Currently five vacancies and applications have been received and are being reviewed.
- Encompasses 1.36 million acres.
- Focus management plan on cultural landscape and traditional knowledge.
- Concept of 'resting' the land-specific areas where uses would not be allowed during certain
- Recommended limiting travel to existing routes and travel management plans.
- Informal recommendations for fuels treatments: stop chaining, limit herbicides.
- Continue to work with MAC for input and have more robust representation. Want to make the plan as comprehensive as possible. Appreciate the participation of anyone who's interested in the monument.

Grand Staircase Escalante Monument Advisory Committee

- Established by Presidential Proclamation and charter
- Most recent charter was signed 2022 (good for two years)
- Roles/Responsibilities are to provide input and recommendations to RMP's
- Three vacant positions on the committee currently.
- Almost 2 million acres in size.
- 2017 was last in person meeting until 2022. Didn't have a quorum for a few years.
- Latest meeting was Oct. 18, 2022
 - Bylaws update
 - Discussing draft alternatives for the RMP
 - Determine support the current range of alternatives
 - Public comment period
 - Trails and horse use on the monument
 - Motorized access
 - Trailheads and facilities-challenges with overuse
 - Science monument-lean heavily for the science side and increasing research
 - Two nominations approved for appointment
 - Continue to hold meetings

RAC Member Questions/Discussion

- Are you referring to original plan or the one from 2016 when the monument was downsized.
 - It is a new one that we are revising.
- Are you going back to the original prior to the Trump admin?
 - Anything that is still valid from other plans we will try and use. But basically, we are back at the beginning.
 - Looking at what we can take out of the older plans and use.

Meeting Minutes Template

Grand Staircase-Escalante National Monument Planning

Harry Barber, Paria River District Manager

- Hoping to get to a plan that stays in place.
- Planning history, stakeholders, consulting parties, concerns and what's next.
- Historical timeline of Grand Staircase-Escalante National Monument
- In 2017 monument reduced in size and divided into three units.
- Team wrote four planning documents in 2020.
- Proclamation in 2021 restored the monument back to size from 1998.
- First monument for the BLM referred to as the flagship in many instances.

Why are we doing a new plan?

- Required by Proclamation 10286.
- Dedicates lands within the monument for specific use and therefore lands within the monument boundary must be managed in a manner that protects the objects and values for which the monument has been designated.
- New plan will respond to new issues.
- Provide analysis to support the BLM in identifying allowable and sustainable uses and discretionary uses.

People we are working with

- Senators and Representatives
- State and County
- Federal Agencies
- Non-Government Organization
 - Consulting parties
 - Monument Advisory Committee
 - Tribes
 - Governor Representatives
 - Federal agencies
 - NGO's
- Planning-to-date
- Pre-planning include RMP prep plan, agency coordination, contracting and standing up the MAC group.
- BLM published Notice-of-Intent (NOI) to prepare new plan on July 20, 2022.

Planning concerns

- Science
- Land use designations special
- Dark Sky Places
- Cultural resource
- Socio-economic
- Minerals

Meeting Minutes Template

- Paleontology
- Rec uses
- Habitat
- Noxious weeds
- Wildlife
- Access
- Soils
- Hydrologic
- Fuels/Fire

Next up

- Planning timeline

Questions?

- How does the process deal with the possibility of perpetually moving boundaries?
 - I try to keep people focused on the planning in front of them. The moving boundaries have negatively affected morale and there is no guarantee that this won't happen again in the future.
- Are you adding or subtracting any BLM districts?
 - We took the monument and the Kanab field office and made Paria River District.
 - Management has essentially stayed the same; just the acres have changed hands.

Bears Ears National Monument

Nicollee Gaddis-Wyatt Canyon Country District Manager

- Team: Jake Palma and Jared Lundell
- Planning area maps
- Bears ears commission from Tribes for cooperative management.

Why?

- Establish goals and directions of the management of the monument.
- Stakeholders and Advisory Committee

Planning schedule

- Notice of Intent was published Aug. 30, 2022
- Scoping period ends Oct. 31, 2022
- To date: five scoping meetings and two meetings with cooperators.

Concerns

- Cultural resources
- Landscape
- Hydrologic
- Groundwater

Meeting Minutes Template

- Wildfire/fuels
- Wildlife
- Paleontology/Geology
- Recreation

Timeline

- Spring 2023 Draft of resource management plan with alternatives (90-day public comment period)
- Jan.-Feb. 2024 proposed resource management plan and final Environmental Impact Statement
- Approved resource management plan and record of decision

RAC Member Questions/Discussion

- Request to provide input and participate in the planning
- As far as the scoping period: What are the locations for the scoping? And why is it in Albuquerque?
 - Easiest access for the Pueblo Tribes and was most well attended meeting.
 - Virtual meetings were well attended as well.
- Both Nicole/Harry: State of Utah advocate of active management moving forward
 - Manage based on current resource management plan for what is currently approved.
 - Also working off the proclamation for protecting objects and values. Required to do detailed review before moving forward with work.
 - Interim guidance helps to define the existing plans and the proclamation.
- Agenda specifically: what level of input are you looking for from the Utah Resource Advisory Council and its members?
 - Part of it is the sorts of conversations we are having today.
 - Scoping and public comment periods.
- Continued access/activities (speaking to Bears Ears) -equal and fair access: wood gathering, hunting, making sure cultural sites aren't 'loved to death' - unfortunately there needs to be use of restoration to some of the sites/areas because the amount of people visiting. Making sure a lot of these places maintain sense of preservation.
 - How do you preserve it?
 - Do you put up fences?
 - Everyone should have access to visit and engage in these cultural sites.
- Clif Koontz Comments on Bears Ears/GSENM
 - The Northern Elk Ridge/Gooseberry/Maverick/Shea Ridge/Shea Mtn/Indian Creek areas: When I look through the draft management plan from the Bears Ears Inter-Tribal Coalition, some things that concern me in the draft are: it does not create new roads in the monument -the proclamation requires roads to be established to maintain sites, etc.; prohibits OHVs around riparian areas, but OHVs have to cross riparian areas to go anywhere; reduces artificial noise in the monument-what is that? Human caused? Is the way to reduce noise to reduce the use?Not comfortable agreeing to reduce use to reduce noise.
 - Recreation has its own spiritual and cultural elements and I want to make sure this monument plan ultimately reflects the promises that were made in the Obama Administration and motorized recreation was compatible with monuments.

Meeting Minutes Template

- Rick Draney Comments
 - Any tracking of visitation increases over the last five years or visuals identifying that there are more visitors coming?
 - Harry GSENM: we have seen an increase utilizing traffic counters, etc. Visitor center employees as well are seeing big increases of visitors who are looking for info/maps. The monument doesn't really have any paved routes, the cottonwood rd., hole in the rock, etc. to get interior. Seeing lots more use to get there and the rec sites within there are seeing increases and have noted increases from when the monument started to now. And we are trying to capture and incorporate that.
 - Nicolle Bears Ears: we are seeing increase everywhere including the monument. And the visitation will continue to increase.
 - Scoping is a wide net (Scoping to EIS process and drafts, revisions and alternatives)
 - Taking info from scoping and use that info develop alternatives, then take that into additional planning process and whittle things down and combine those into the draft plan and draft EIS. And then go into detailed comments on the analysis, and then moving to the proposed RMP and then Final RMP and EIS.

Federal Lands Recreations Enhancement Act (FLREA)

Evan Glenn, Utah Recreation Program Lead

- Overview of FLREA
- Requires a recreational advisory committee and we utilize the BLM RAC for that.
- Signed into law in 2004 and is being renewed annually.
- Authorizes five agencies to collect fees. Bureau of Land Management, Bureau of Reclamation and U.S Department of Agriculture Forest Service, Fish and Wildlife Service and National Park Service
- Authorizes different kinds of fees that ultimately go back to the site to help support it.
 - National Park Service and Fish and Wildlife Service can charge entrance fees (they are the only ones that can charge entrance fees)
 - BLM, Bureau of Reclamation and U.S Department of Agriculture Forest Service can charge standard amenity fees (i.e., day use, overlooks, etc.).
 - All five agencies can charge expanded amenity fees (higher level of rec purpose, boat ramps, campgrounds-minimal level of services).
 - The Act also authorizes sales of national passes (i.e., America the Beautiful pass).
- Establishes requirements for public involvement and REC RAC recommendations for new fee areas and changes to existing fees.
- Establishes rules for what makes up the Recreation Advisory Committee -i.e., duties, composition, appointment, terms, etc.
- FLREA revenue uses
 - Repair and maintenance
 - Interpretation, visitor info/services
 - Habitat restoration directly related to wildlife dependent recreation

Meeting Minutes Template

- Law enforcement
- Direct operating or capital costs
- Management agreements
- Fee process approval flow chart
- New fee areas require federal register notice 6 months prior before implementation
- Changes to existing fees can be implemented immediately
 - Fee changes since 2019
 - Kanab BLM campground fees
 - New fee area in WDD (Five-mile pass)
 - FS Ferron, Price, and Sanpete RD; 22 campgrounds saw fee increase
 - FS Moab and Monticello RD; 8 campground fee changes
 - BLM Price Desolation/Gray rivers permit fee increase
 - BLM Richfield new campground fees (3)
 - Today: Fishlake NF will have new fee sites and changes
 - Future: Moab BLM, Cedar City and Uinta-Wasatch-Cache have upcoming changes and implementations to fees in areas

RAC Member Questions/Discussion

- Are people now paying fees and being compliant?
 - Yes, we are seeing people more likely to comply with paying having electronic options.
- On the donations, does the act allow for donations at sites that aren't set up for fees? (i.e., Parowan Gap)
 - Donations are separate from the FLREA fees. Do not require approvals. We can put up donation tubes or QR codes at places outside of our fee sites (it's new BLM policy) and we are finding lots of success. Gives public opportunity to give back to a site they care about.
- Increase interests and desire to increase rec opportunities: How are people doing at recreating responsibly? Are people learning how to be responsible, so we aren't incumbering large issues?
 - Pandemic introduced a lot of people to the outdoor setting. We can use fee dollars to support restrooms and education campaigns. New use is especially challenging for us. Side-by-sides have introduced a whole new challenge. I think we will continue to play catch up as more people discover the outdoors.

[Recreation Fee Presentation and Implementation](#)

Evan Glenn, Utah Recreation Program Lead

Douglas Robison, U.S. Department of Agriculture Forest Service District Recreations Staff Officer

Fishlake National Forest Rec Fee Proposal 2021

- 1.4 million acres between 4 districts
- Beaver District, Richfield District and Fremont River district
- Visitation stats: 696,000 visitors per year. Fishing, developed camping, hunting.

Meeting Minutes Template

- Majority of visitors within 200 miles

Cabin Fees

- Big Flat Guard Station, Beaver Ranger District; Civilian Conservation Corps cabin-full renovation, water during summer months.
 - Proposed \$0 to \$50 Nov. 1-May 14
 - Proposed \$0 to \$75 May 15-Oct. 31
- Mt. Terrill Guard Station- Richfield Ranger District; partially updated, no water on site.
 - Proposed \$0 to \$50 July 1-Oct. 31

Cabin Fee increase

- Aquarius Mountain Ranger Station- Boulder Ranger District; water, RV spots.
 - Proposed \$35 to \$90 closes Sept. 30
 - Could the RV pads be separate from the cabin rental?
 - Not having a large group.
 - Would it be invasive to have 2 separate groups at that site?
 - Yes, small site area.

New group picnic site

- Twin Creeks Amphitheatre-Boulder Ranger District; High capacity, drinking water, flush toilet, reservable, garbage collection, paved access road.
 - Proposed \$0 to \$60 per day/group May 15- Sept. 15
 - Pavilion is under rec.gov \$60 for reservation. Also has first come, first serve for free (if no reservations that day) and in the same site area there are picnic tables that are first come, first serve for free.
 - Fees can also impact people by giving them a vested feeling of being stewards of that area.
 - Site currently has lots of deferred maintenance. Needs addressing.
 - Before we would start charging the fee, we have projects in the works to improve the site.

No extra cleaning fees, not all sites offer garbage collection, maintenance is a larger workload by adding these sites to the reservation systems. Use has gone up considerably.

- How we arrived here:
 - Comment period 2021
 - *Federal Register*
 - Social media
 - Contacted commissioners and other stakeholders
 - No comments
 - 2 comments received in opposition.
 - Senior access and people priced out of using the site. (Aquarius specifically)

RAC Member Questions/Discussion

- Parking issue at Twin Creek: Can sign posting be implemented?
 - Not sure if it would be helpful or not. Might help going from zero fee to fee. Letting people know that the pavilion is reserved for the day.
- Motion to approve fee implementations and increases by Richard Draney: Seconded by Dean Draper.
 - Vote: All in favor say aye: Motion passes unanimously.
- Recommendation to find data and records of when fees were first introduced.
- Wrap up from Evan: We want to avoid sticker shock, possibly stepping up fees annually. It is not laid out in FLREA. Get proposals in front of RAC and see what is outlined. Thresholds for incremental increases (i.e., in five years, or 10 years the fees will be this.) We will try in the future to do that. We haven't started on that yet. It lets people know that these changes are coming. And projecting out into the future. Looked back at fees from the 90's and it's been a long time since some of these fees have been increased.

[Bipartisan Infrastructure Law](#)

Mark Lawyer, Senior Advisor

Christopher Delaney, State Fire Management Officer

Fire/Fuels Overview of the Bipartisan Infrastructure Law (BIL)

- Signed in 2021
- Fire resiliency, ecosystem restoration, orphaned wells.
- \$1.5 billion in funding for fire management.
 - Department of Interior received \$86 million in July 2022- \$38.2 million for fuels distributed
 - Goal to protect vulnerable communities
 - Allocated \$37.7 million for workforce reform
 - Special workforce payments \$20K bonus or 50% of annual salary for all secondary and primary firefighters
 - New Occupational Series (0456) for wildland firefighters.
 - Support and address mental health issues
- Fiscal Year 2022 BLM Utah \$7.2 million in funding
 - 32 fuels projects throughout the state- 21 projects for mechanical, chemical and fire treatments on the ground
 - 2,797 acres treated with additional 18 thousand acres to be accomplished
 - \$2.5 million in workforce reform for allocation in FY22
 - Special supplements are temporary and will run out by end of Fiscal Year 2023
 - Waiting on new series to come out to convert more folks to full-time. More are planned for FY23.

Meeting Minutes Template

- Projected \$8 million end-of-October for projects throughout the state
- Planning 49,000 treatment acres for Fiscal Year 2023.
- Additional \$8 million annually for projects.

Ecosystem Restoration FY22

- FY22 Improvements
 - Campground improvements
 - Riparian enclosure maintenance
 - Five Mile Pass site plan
 - Indian Crossing parking area
 - John Jarvie Ranch walking path
 - Jurassic National Monument visitor infrastructure
 - Noxious weed eradication
 - Refuge Pond reconstruction
 - Total of \$540K

Orphaned Wells

- 22 wells will be plugged in Fiscal Year 2023
 - Where are they?
 - Five in Emery County
 - Five in Grand County
 - One in Summit County
 - 11 wells in Book Cliffs area

RAC Member Questions/Discussion

- Why are we doing this (plugging wells)?
 - Once the well concludes its useful life, the expectation is for the operator to remediate the site. The issue comes when small contractors have purchased from larger contractors and we may not be able to backtrack to who the original owner was. When this happens, we come in and do the work. Some of the wells are 75 years old and contain methane gas underground which may corrode, rupture and release in the atmosphere. We try to not do a lot of the work, and the expectation is for the companies to do the work of restoration.
- How many wells are there?
 - Many wells are on the eastern part of the country. The BLM was appropriated \$250 million to do this work. The states got \$4.2 billion to do the work and a lot of the work in states will be on private land.
- Is starthistle on list of invasives?
 - Yes, it is.

Meeting Minutes Template

Fire and Fuels program

Gary Bishop, Deputy State Fire Management Officer

- Four unique district programs
 - West Desert District
 - Green River District
 - Color Country District
 - Canyon Country District
- Five interagency dispatch centers
 - Northern Utah
 - Richfield
 - Color Country
 - Uinta Basin
 - Moab
- Program Functions
 - Policy/Budget at the state office
 - Planning, aviation, training, trespass, business, fuels, preparedness, mitigation education and radio program
 - District level is local
 - BLM mandated to investigate all human-caused fires
 - Work with Attorney General Office and Solicitors' office to seek damages/costs on human-caused fires.
 - Utah's Fiscal Year 2022 Fire season:
 - Human-caused fires: 55 fires burned 526 acres
 - Natural-causes fires: 201 burned 2,942 acres

RAC Member Questions/Discussion

- Helicopters/air tankers are they contracted?
 - Vast majority of all aircraft are leased or contracted aircraft.
- What is the condition of those aircraft? We've heard it's hard for contractors to maintain. What is your opinion on that?
 - Majority of aircraft are turbine and turbo prop engines. When we talk about heavy airtankers and a majority of Type 1 Helicopters that's all USFS contracting. BLM focuses on Type 3 helicopters and single engine air tankers (SEATS). There are national requirements on air worthiness both from the Federal Aviation Administration and the air branches of different agencies (i.e., DOI, USFS)
- The State of Utah hired two Type 1 helicopters, can the BLM use those?
 - Yes
- Wondering about percentage of recaptured funds. Does the BLM really get money back?
 - It really depends on the case.
- Over the last few years, I've seen lots of revegetation projects, BLM is heads/shoulder above other agencies. It's not always from fire or for fire, but could be for sage-grouse, etc.
- Brad Washa would give us info with report on the benefit of fuels treatments. Please continue to do that. Those are huge success stories.

Meeting Minutes Template

Public comment

No Public Comment

Wrap-up Discussions

- Fire/Fuels: Anything additional?
 - Congratulations on a great year, with the prevention messaging.
- future topics for upcoming meeting Jan 18th in Vernal:
 - Go over agenda for Jan 18th
 - Green River Planning
 - Rec Fee proposals
 - Rec dispersed camping
 - Rec program overview-including entire state
 - GSENM/Bears Ears updates
 - Wild horse and burro
 - Lands & realty projects-Dingell exchange and overview of why it takes so long
 - Dingell Act implementation

Public Comment & Wrap up

- Has the May agenda been published in the *Federal Register*?
 - There is some flexibility in the agenda. The public comment period is currently set from 4-4:30.
- May Agenda (Two-day meeting)
 - BLM Utah Priorities
 - Color Country Planning
 - Recreation Business plans
 - Recreation Fee proposals
 - Cultural site stewardship program
 - Fire/Fuels
 - Bipartisan Infrastructure Law update
 - Energy Program
 - Public Comment/Wrap up
 - Add Paria River District Travel Management Plans for a May agenda item
- General Ideas on the *Federal Register* notice, if someone wants to add something, we can try.
- Can we get an update on the Northern Corridor and the land exchange
 - In litigation right now so can't say much.
- Travel Management are hot topics
 - Suggestion to make travel management plans on Green River District a January agenda item.
- Suggestion for anything that they'd like to see during day two tour of the May meeting.
 - Dispersed camping in January meeting, could we find out if it's a more directed overview of specifics.
 - Statewide recreation pass, possibly as part of a recreation update
- Copies of the presentations to go back and revisit those?

Meeting Minutes Template

- Presentations will be added to the end of meeting minutes

Action Item:

- Contact sheet including phone numbers for RAC committee members
- Lorie will send Hannah a template for the Forest Service for the fee approvals that the chair will sign
- Minutes and presentations will be sent to RAC members and posted to the Utah RAC BLM website when approved by Utah RAC Chair
- Add RAC members to incident email info (PIO)

Bill Cox: Motion to adjourn, seconded by Cliff Koontz

Minutes Approved: _____

[Tyler Thompson, Utah Resource Advisory Council Chair]



Federal Advisory Committees and Ethics Responsibilities of Representative Members



FACA Advisory Committees and BLM Advisory Committees

- ▶ Members of Federal Advisory Committees Act advisory committees may come from both the public and private sectors.
- ▶ These individuals provide the Government with needed expert advice and diverse views.
- ▶ Composition of BLM Advisory Committees shall:
 - Be structured to provide fair membership balance, both geographic and interest-specific, in terms of the functions to be performed and points of view to be represented, as prescribed by its charter.
 - Be formed with the objective of providing representative counsel and advice about public land and resource planning, retention, management and disposal.

BLM Advisory Committees Purpose and Objective

Purpose - Advise the Secretary of the Interior and Bureau of Land Management on matters relating to public lands and resources under the administrative jurisdiction of the Bureau of Land Management

Objective - To make available to the Department of the Interior and Bureau of Land Management the expert counsel of concerned, knowledgeable citizens and public officials regarding both the formulation of operating guidelines and the preparation and execution of plans and program for the use and management of public lands, their natural and cultural resources, and the environment.

Representative Members

- ▶ Council members and members of general-purpose subgroups shall be representative of the interests of the following 3 general groups:
 - ▶ Persons who: Hold Federal grazing permits or leases within the area for which the council is organized; represent interests associated with transportation or rights-of-way; represent developed outdoor recreation, off-highway vehicle users, or commercial recreation activities; represent the commercial timber industry; or represent energy and mineral development.
 - ▶ Persons representing: nationally or regionally recognized environmental organizations; dispersed recreational activities; archeological and historical interests; or nationally or regionally recognized wild horse and burro interest groups.
 - ▶ Persons who: hold state, county or local elected office; are employed by a State agency responsible for management of natural resources, land, or water; represent Indian tribes within or adjacent to the area for which the council is organized; are employed as academicians in natural resource management or the natural sciences; or represent the affected public-at-large.
- ▶ The Federal ethics rules that apply to Federal employees do not apply to representatives.

U. S. DEPARTMENT OF THE INTERIOR
BUREAU OF LAND MANAGEMENT

GRAND STAIRCASE-ESCALANTE NATIONAL MONUMENT
ADVISORY COMMITTEE

CHARTER

1. **OFFICIAL DESIGNATION:** Grand Staircase-Escalante National Monument Advisory Committee (Committee).
2. **AUTHORITY:** This Committee is established pursuant to Presidential Executive Order 13807, “Modifying the Grand Staircase-Escalante National Monument (Monument) (81 FR 10171, February 2, 2017), and is consistent with section 309 of the Federal Land Policy and Management Act (FLPMA), as amended (43 U.S.C. 1739). The Bureau of Land Management (BLM) has established standards and procedures for the creation, operation, and termination of advisory committees. Refer to the 1995 amended BLM regulations (43 CFR 1784.2-1); avoidance of conflicts of interest (1784.2-2); calls for nominations (1784.4-1); notice of meetings (1784.4-2); records (1784.5-3); course of instruction for members (1784.6-1(h)). The Committee is regulated by the Federal Advisory Committee Act (FACA), as amended (5 U.S.C. Appendix 2).
3. **OBJECTIVES AND SCOPE OF ACTIVITIES:** The Committee shall provide recommendations and advice to the Secretary of the Interior (Secretary) regarding the development and implementation of management plans for the Grand Staircase, Escalante Canyons Units and, as appropriate, management of the Monument.

Committee Charter Language

The U.S. Department of the Interior addresses potential conflicts of interest of its advisory committee representatives through the inclusion of certain ethics responsibilities in the committee charter.

Current Ethics Requirements in Charters

Non-Federal Members. Non-Federal members of the Committees and subcommittees appointed as representatives are **not subject to Federal ethics statutes and regulations.**

However, **no non-Federal Committee or subcommittee members will participate in any Committee or subcommittee deliberations or votes relating to a specific party matter before the Department or its bureaus and offices including a lease, license, permit, contract, grant, claim, agreement, or litigation, in which the member or the entity the member represents has a direct financial interest.**

Committee Charter Language Specific to Bureau of Land Management (BLM) Committees

- ▶ As provided in 43 C.F.R. §1784.2-2, all members of the Committee shall be required to disclose their **direct or indirect interest** in leases, licenses, permits, contracts, or claims that involve lands or resources administered by BLM, or in any litigation related thereto.
 - ▶ **For the purposes of this paragraph, indirect interest includes holdings of a spouse or dependent child.**



Specific Party Matter

- ▶ A specific party matter typically involves:
 - a specific proceeding affecting the legal rights of the parties: or
 - an isolatable transaction or related set of transactions between identified parties.
- ▶ Examples include leases, licenses, permits, contracts, claims, grant, application, controversy, charge, investigation, arrest, enforcement action, request for ruling or other determination and related litigation which involves lands or resources administered by the Bureau of Land Management.

Specific Party Matter

- ▶ “Specific party matter” does not include matters of general applicability, such as:
 - rulemaking;
 - legislation;
 - the formulation of general policy, standards, or objectives; or
 - other actions of general application.



Direct and Indirect Financial Interests

- ▶ “Direct financial interest” means one’s own personal financial interest.
- ▶ “Indirect financial interest” includes holdings of a spouse or dependent child.
- ▶ “Financial interest” means the potential for gain or loss as a result of governmental action on the matter.
- ▶ Direct or indirect financial interest might arise from:
 - A permit on public land being discussed by the committee.
 - An oil or gas lease on public land.
 - Litigation involving lands or resources administered by the Bureau of Land Management.
 - Any similar interest that may be affected by the matter.

Direct and Predictable Effect on Financial Interest

You are prohibited from participating in a specific party matter only if the matter will have a direct and predictable effect on your direct financial interests, or the holdings of a spouse or a dependent child or the direct financial interests of the entity you represent.

Direct Effect on Financial Interests



- ▶ A specific party matter will have a direct effect on a financial interest if there is a close causal link between any decision or action to be taken in the matter and any expected effect of the matter on the financial interest.
- ▶ An effect may be direct even though it does not occur immediately.


What is NOT a Direct Effect on Financial Interest

The chain of causation is attenuated or is contingent upon the occurrence of events that are speculative or that are independent of, and unrelated to, the matter.

The impact on financial interest occurs only as a consequence of the specific party matter's effects on the general economy.

Predictable Effect on Financial Interest

There is a real, as opposed to a speculative, possibility that the matter will affect the financial interest of the member, spouse or dependent child, or the entity the member represents.



The magnitude of the gain or loss doesn't need to be known.



The dollar amount of the gain or loss is immaterial.

Only Advisory Duties are Restricted

You may act, outside of advisory duties, on behalf of self or others, in a specific party matter before DOI that affects your financial interests.

You may not act, as part of advisory duties, on that specific party matter.

Notification to Your Committee



▶ If you find yourself in a position to take any advisory action regarding a specific party matter that would affect your direct financial interest, or the holdings of a spouse or dependent child, or the direct financial interest of the entity you represent, you must:

- ▶ notify the Designated Federal Official; and
- ▶ recuse yourself from participating in that action.

Look at the agenda prior to the meeting to see if there are matters listed from which you may need to recuse. Contact the BLM Ethics Team if questions.

The Bottom Line

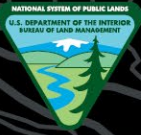
- ▶ FACA Committees and BLM Advisory Committees are put in place because the government needs your expertise, experience, and insight.
- ▶ Don't let an ethical problem derail the good work you are doing here.



Questions?

- ▶ Contact: Claudia Merino, claudia.merino@sol.doi.gov
- ▶ General inquiries: blm_wo_ethics_office@blm.gov





U.S. Department of the Interior
Bureau of Land Management

West Desert District Land Use Planning



Deep Creeks Wilderness Study Area, outside Ibapah, UT



What we will cover

- West Desert District Overview
- Importance of Land Use Plans
- District Planning History
- District Planning Restrictions
- Planning Efforts 2000 to Present
- Possible Next Steps

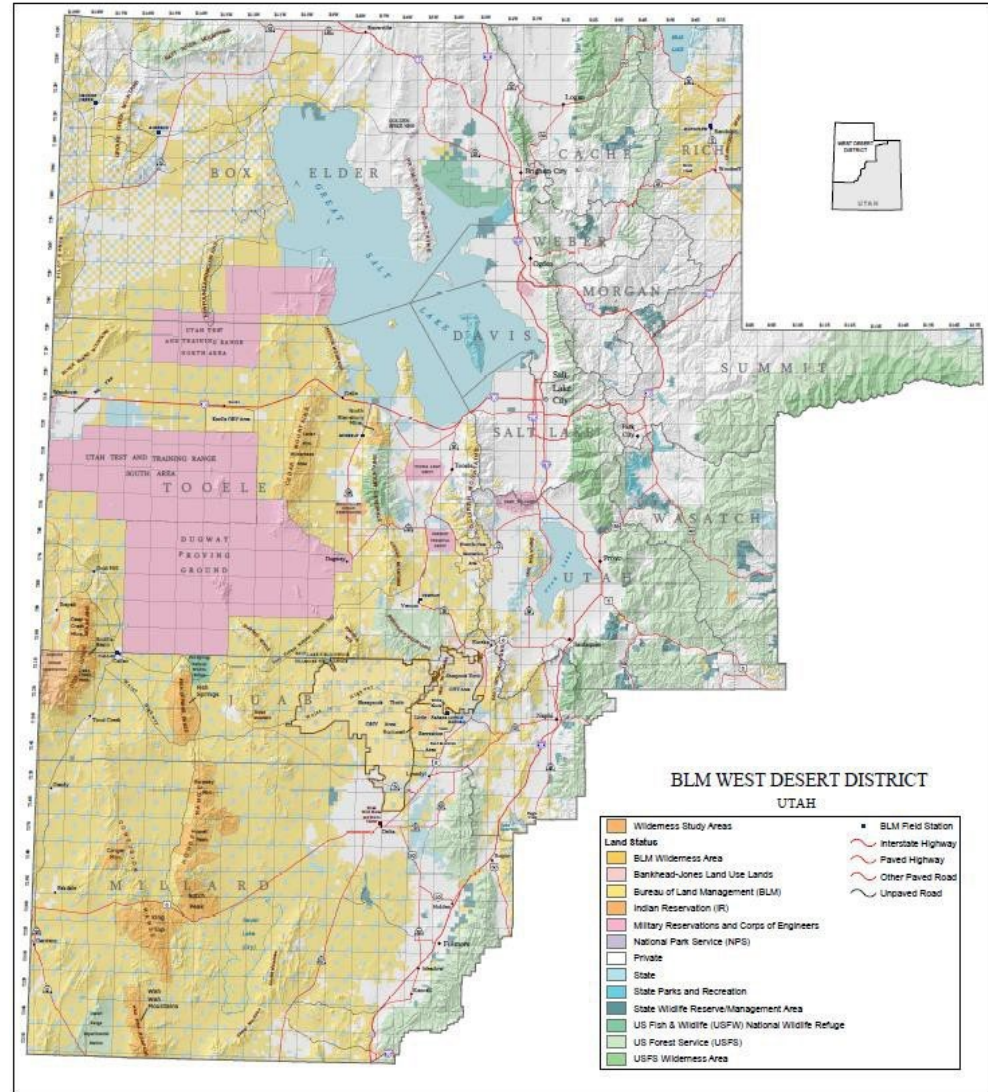


Little Sahara Recreation Area,
Eureka, UT



West Desert District

- 7.7 million BLM-administered acres
- Home to over 2.6 million Utahns, nearly 86% of the state's population
- Part of the Great Basin region with isolated mountain ranges separated by playas and sagebrush flats.
- Population growth and wildland urban interface create complex management situations





Importance of Land Use Plans to BLM

Law

Land Use Plans are required by the Federal Land Policy and Management Act of 1976 (FLPMA)

- “the national interest will be best realized if the public lands and their resources are periodically and systematically inventoried and their present and future use is projected through a land use planning process coordinated with other Federal and State planning efforts;”

Land Use Plans shall...

- use and observe the principles of **multiple use and sustained yield**
- use a **systematic interdisciplinary approach** to achieve integrated consideration of physical, biological, economic, and other sciences;
- consider **present and potential uses** of the public lands;
- weigh **long-term benefits** to the public against **short-term benefits**;



Importance of Land Use Plans to BLM

Regulation

43 Code of Federal Regulations (CFR) 1600

- “The objective of resource management planning is to maximize resource values for the public...”
- “Resource management plans are designed to guide and control future management actions and the development of subsequent, more detailed and limited scope plans for resources and uses.”



Bonneville Salt Flats, off I-80
near UT-NV border



Importance of Land Use Plans to BLM

Policy

- H-1601-1 – Land Use Planning Handbook
 - Provides supplemental guidance for implementing the BLM land use planning requirements
 - Appendix C provides resource-specific guidance for land use plan decisions and implementation decisions.
 - Monitor and evaluate plans and amend or revise as needed.
- Resource Management Plan (RMP) – revision, or amendment
 - H-8320-1 – Planning For Recreation and Visitor Services
 - Provides planning guidance at the land-use plan and implementation level for recreation and visitor services.





West Desert District Planning History

- Resource Management Plans
 - Box Elder RMP 1986
 - Pony Express RMP 1990
 - House Range RMP 1987
 - Warm Springs RMP 1987
- Other Land Use Plans
 - Randolph Management Framework Plan (MFP) 1980
 - Isolated Tract Planning Analysis 1985
 - Park City MFP 1996
- Amendments
 - Oil and Gas 1988-1989
 - North Oquirrh Mountain 1997
 - Box Elder 1998
 - Fire Management Plan 1998 and 2005
 - 2010 UNEV/Holly Pipeline
 - Greater Sage-Grouse 2015 and 2019 (Stayed Implementation)



Notch Peak, outside of Delta, UT



West Desert Planning Restrictions

Fiscal Year 2000 Legislation

- National Defense Authorization Act for Fiscal Year 2000 (Public Law 106-65, 113 Stat. 852) enacted October 5, 1999.
 - Section 2815
 - Planning restriction for 4 RMPs under the Utah Test and Training Range - titled "Utah National Defense Lands"
 - "The Secretary of the Interior may not proceed with the amendment of any individual resource management plan for Utah national defense lands"
 - Allows for amendment through statewide amendment if they do not consider "wilderness characteristics or wilderness management"
 - DOD Readiness Impact Study required before planning can resume.



West Desert Planning Restrictions

Department Solicitor Official Opinion: Titled the legislation language as a **prohibition** on amending “any individual resource management plan...Planning is **frozen** in its current form pending completion of the study.”



Paul Bunyan's Woodpile, near Nephi, UT



West Desert Planning Restrictions

Fiscal Year 2006 Legislation

- National Defense Authorization Act for Fiscal Year 2006 (Public Law 109-163, 119 Stat. 3216) enacted January 6, 2006.
 - Sections 381-385
 - Designated the Cedar Mountain Wilderness
 - Did not repeal sections 2815 of the 2000 legislation
 - “Nothing in this subtitle shall be construed to affect any Federal lands located outside the covered wilderness or the management of such lands”
 - “Covered wilderness” is defined as, “the wilderness areas designated by this subtitle and wilderness study areas located near lands withdrawn for military use and beneath special use airspace critical to the support of military test and training missions at the Utah Test and Training Range”



West Desert Planning Restrictions

Solicitor Offices concluded that:

- May not proceed with the amendment of any individual resource management plans
- Legislation does not prevent BLM from initiating a statewide amendment, if it does not consider wilderness characteristics or wilderness study areas

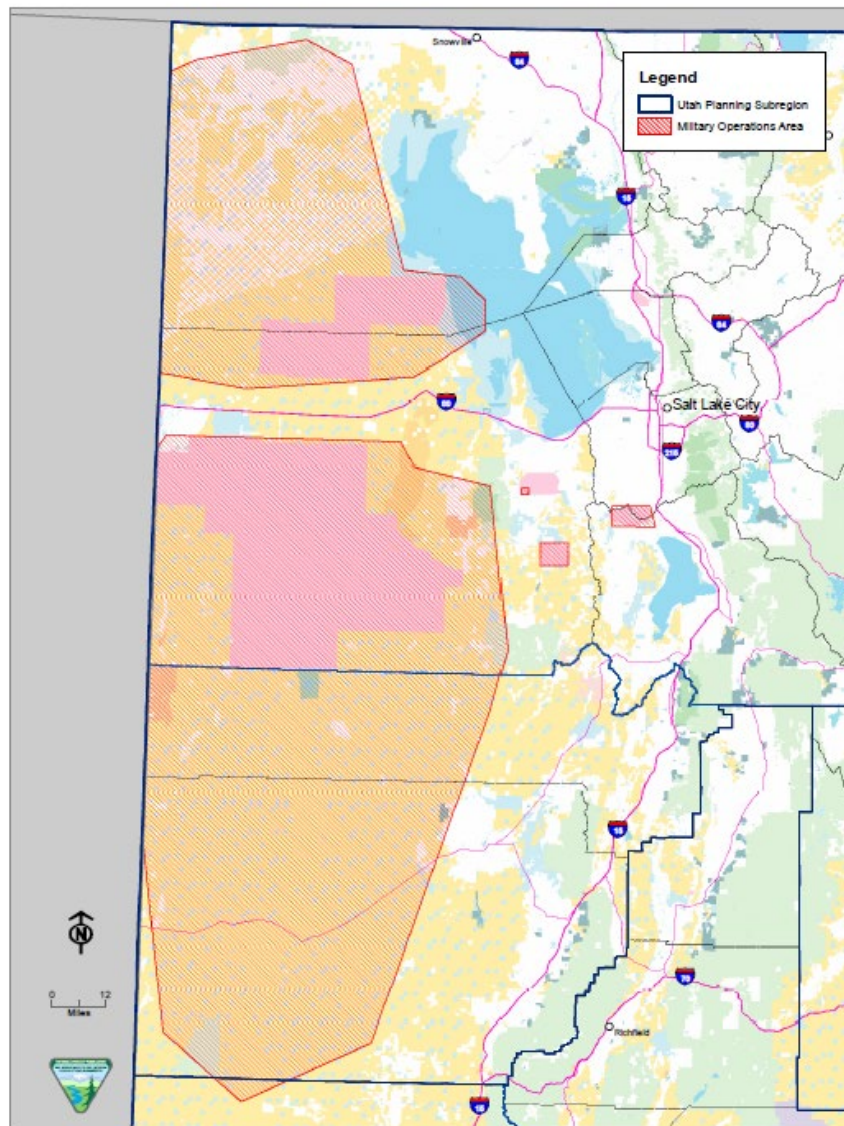


Greater Sage Grouse, Park Mountain, UT



Military Operations Area (MOA)

Utah National Defense Lands



Land Ownership Legend

- | | | | |
|---------------------------------|---|--|--|
| Bureau of Land Management (BLM) | USFS Wilderness Area | Military Reservations and Corps of Engineers | State Wildlife Reserve Management Area |
| BLM Wilderness Area | National Park Service (NPS) | Other Federal | Private |
| Birkhead-Jones Land Use Lands | US Fish & Wildlife (USFWS) National Wildlife Refuge | State | |
| US Forest Service (USFS) | Indian Reservation (IR) | State Parks and Recreation | |

Recreation is available to the BLM for the use of BLM lands for purposes not authorized by the BLM.



West Desert District Planning Efforts 2000 - Present

- 2005 Randolph Management Framework Plan Amendment
 - Initiated through Federal Register Notice – Not Completed
- 2005 BLM Utah Fire Management Plan Amendment
 - Only Randolph, Iso-tract, and Park City plans amended
- 2006 Carpenter v WWP Federal Court Settlement
- 2011 Mona to Oquirrh Transmission Line
- 2011 Magnum Gas Storage Project
- 2015 Greater Sage Grouse Approved Resource Management Plan Amendment
- 2019 Greater Sage Grouse Approved Resource Management Plan Amendment



Next Steps

- Greater Sage Grouse Plan Amendments in progress
- Randolph MFP Amendment
- Iso-Tract PA/Park City MFP Amendments
- Possible Fire Management Plan Statewide Amendment





Questions



Transcontinental Railroad Grade,
Box Elder County, UT



U.S. Department of the Interior
Bureau of Land Management

San Rafael Swell Recreation Area Advisory Council (RAAC)





Establishment of the San Rafael Swell RAAC



- The San Rafael Swell Recreation Area congressionally designated as part of the John D. Dingell Jr. Conservation, Management, and Recreation Act of 2019 (Dingell Act) includes approximately 217,000 acres.
- The San Rafael Swell Recreation Area Advisory Council (RAAC) is established under the Dingell Act and section 309 of the Federal Land Policy and Management Act (FLPMA).
- The Charter for the San Rafael Swell RAAC was signed on Dec. 19, 2019.



Role of the San Rafael Swell RAAC

- The Council will advise the Agency in future land use planning decisions including:
 - Plan Amendment
 - Implementation planning
- The Council will provide recommendations regarding:
 - Outdoor recreation opportunities
 - Projects in the San Rafael Swell Recreation Area; and
 - Collaboration with local government, communities, Tribes, and the public
- The Council provides advice through the Designated Federal Official (DFO): Green River District Manager Lance Porter





Members of the San Rafael Swell RAAC

| Name | Representative of: | Term expiration |
|-----------------------------|---|------------------------|
| Wade Allinson | Historical uses of the Recreation Area | Sept. 10, 2023 |
| Elven Leon McElprang | Grazing allotment permittees | Sept. 10, 2023 |
| Vacant | Non-motorized recreational users | N/A |
| Vacant | Motorized recreational users | N/A |
| Vacant | Emery County Commission | N/A |
| Sue Bellagamba | Conservation organizations | Jan. 15, 2024 |
| Vacant | Elected leader of a federally recognized tribe | N/A |



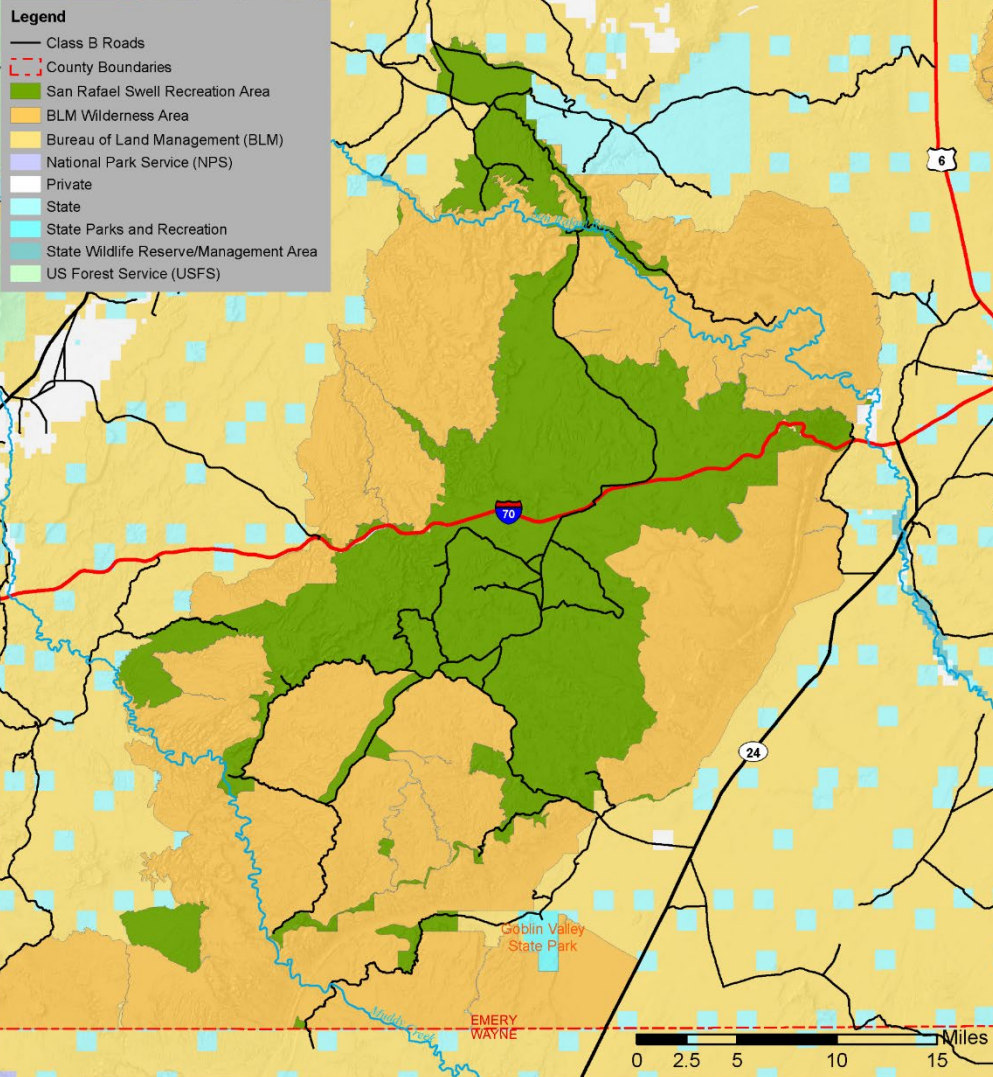
San Rafael Swell Recreation Area

Price Field Office
125 S. 600 W.
Price, Utah 84501
435-696-3600



8/29/2019

No warranty is made by the Bureau of Land Management as to the accuracy, reliability, or completeness of these data for individual use or aggregate use with other data. Original data were compiled from various sources. This information may not meet National Map Accuracy Standards. This product was developed through digital means and may be updated without notification.

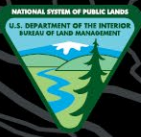




2022 Accomplishments

- Three Recreation Area Advisory Council meetings, including a site field visit
- Completed Cane Wash recommendations to protect wilderness boundaries
- Continued recommended work within Buckhorn Wash Campground areas placing more than 20 picnic tables and fire rings
- Partnered with Back Country Horsemen to finish recommended updates and equestrian work at Swinging Bridge
- Council member recognition of three departing members: Les Wilberg, Rod Player and Kent Wilson
- Published two Federal Register Call For Nomination Notices





U.S. Department of the Interior
Bureau of Land Management

Utah Resource Advisory Council October 19, 2022

Canyon County District – Advisory Committees





Establishment

- The Bears Ears Monument Advisory Committee (MAC) was established by Presidential Proclamation
- Its first charter, which outlines the membership, roles, and responsibilities, was approved in fall 2018. The most recent charter was signed by the Secretary of the Interior in May 2022.



Role

- Provide information and advice regarding the development of the management plan and monument management.
- Work together to represent different viewpoints and perspectives to provide recommendations to the BLM and USDA Forest Service.
- Share information about their work on the committee and how the public can be involved in management of Bears Ears National Monument.

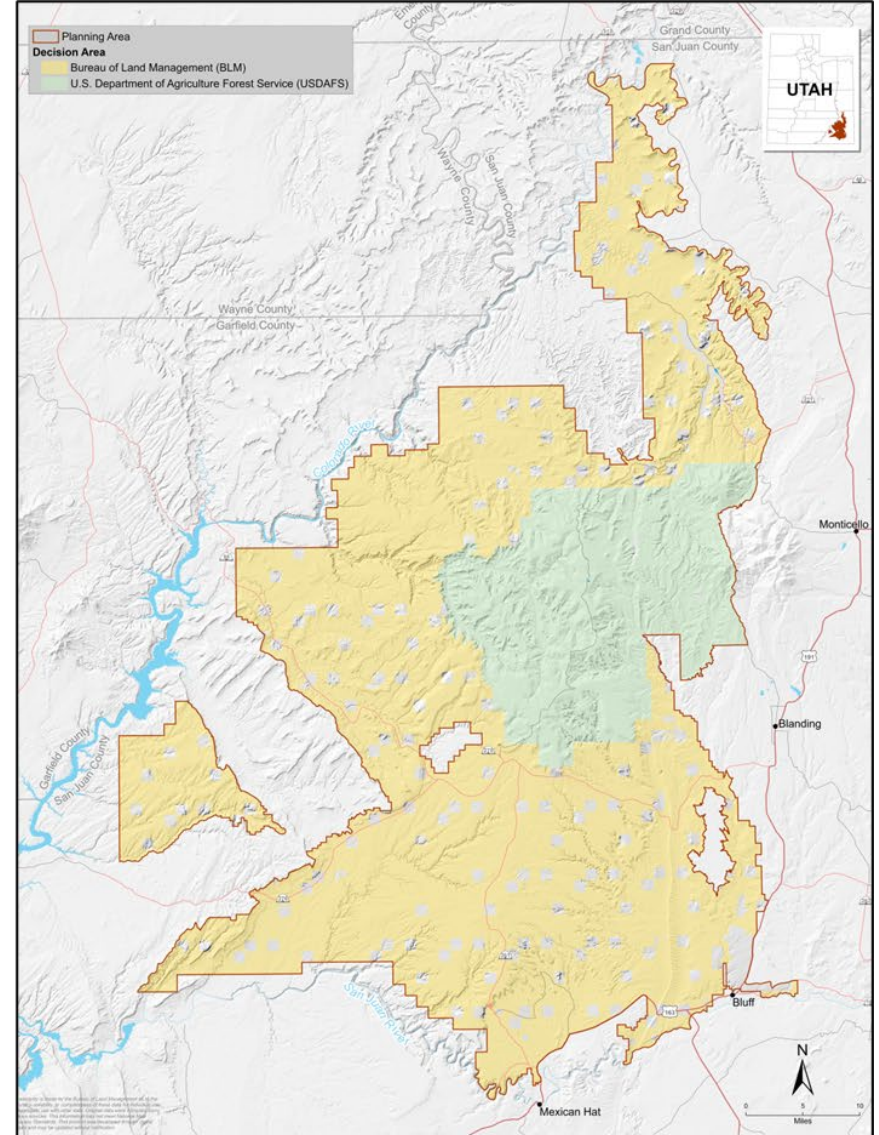
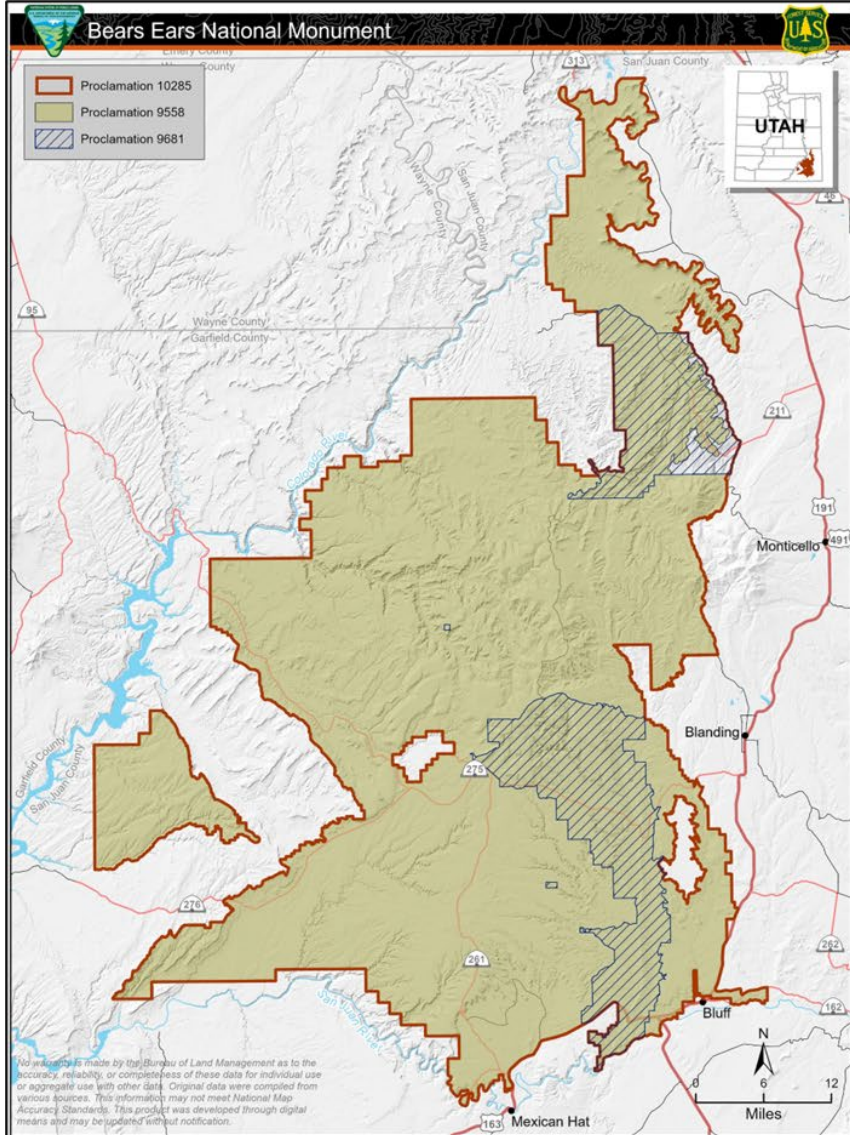


Membership

| Representative Category | Member | Term expires |
|------------------------------|-------------------------|-----------------|
| Local Elected Official | Vacant | TBD |
| State Government | Mark Boshell | April 13, 2025 |
| Paleontology | Brooks Britt | January 8, 2024 |
| Archaeology | Vacant | TBD |
| Conservation | Eve Tallman | April 13, 2025 |
| Livestock Grazers/Permittees | Vacant | TBD |
| Tribal Interests | Davina Smith | April 13, 2025 |
| | Regina Lopez-Whiteskunk | April 13, 2025 |
| | Vacant | TBD |
| Developed Recreation | Denyce White | April 13, 2025 |
| Dispersed Recreation | Vacant | TBD |
| Private Landowners | Zeb Dalton | January 8, 2024 |
| Local Business Owners | Adam Redd | January 8, 2024 |
| Public at Large | Angelo Baca | April 13, 2025 |
| | Kelly Pehrson | January 8, 2024 |



Monument Maps





Committee History

- The first meeting was held in June 2019. There have been six meetings.
- Two meetings were held in person, but since February of 2020, the rest of the meetings have been virtual.
- The Federal agencies plan to hold an in-person meeting on December 7, 2022.



Next Steps

- Nominations to fill vacancies on the committee are currently under review.
- We plan to continue to hold advisory committee meetings and request input from the resource advisory council.





U.S. Department of the Interior
Bureau of Land Management

Utah Resource Advisory Council October 19, 2022

Paria River District – Grand Staircase-Escalante National Monument Advisory Committee





Welcome

Harry Barber,
Bureau of Land Management
District Manager,
Paria River District

669 S. Hwy 89A,
Kanab, Utah 84741
435-644-1200
hbarber@blm.gov





Establishment

- The Grand Staircase-Escalante National Monument Advisory Committee (MAC) was established by Presidential Proclamation 6920.
- The first MAC was established by charter, signed by Secretary of the Interior Gale Norton on Sept. 26, 2003. The charter outlines membership, roles, and responsibilities.
- The most recent charter was signed by Secretary of the Interior Deb Haaland on June 1, 2022.
- The charter is good for a period of two years.



Role

- **Advise GSENM in future Land-Use Planning decisions**
 - Development of our Resource Management Plan
 - Implementation planning
- **Provide recommendations regarding:**
 - Science, recreation, range, and all other resources
 - Projects in the GSENM
 - Collaboration with local government, communities, Tribes, and the public



The MAC provides recommendations through the Designated Federal Official, Paria River District Manager, Harry Barber



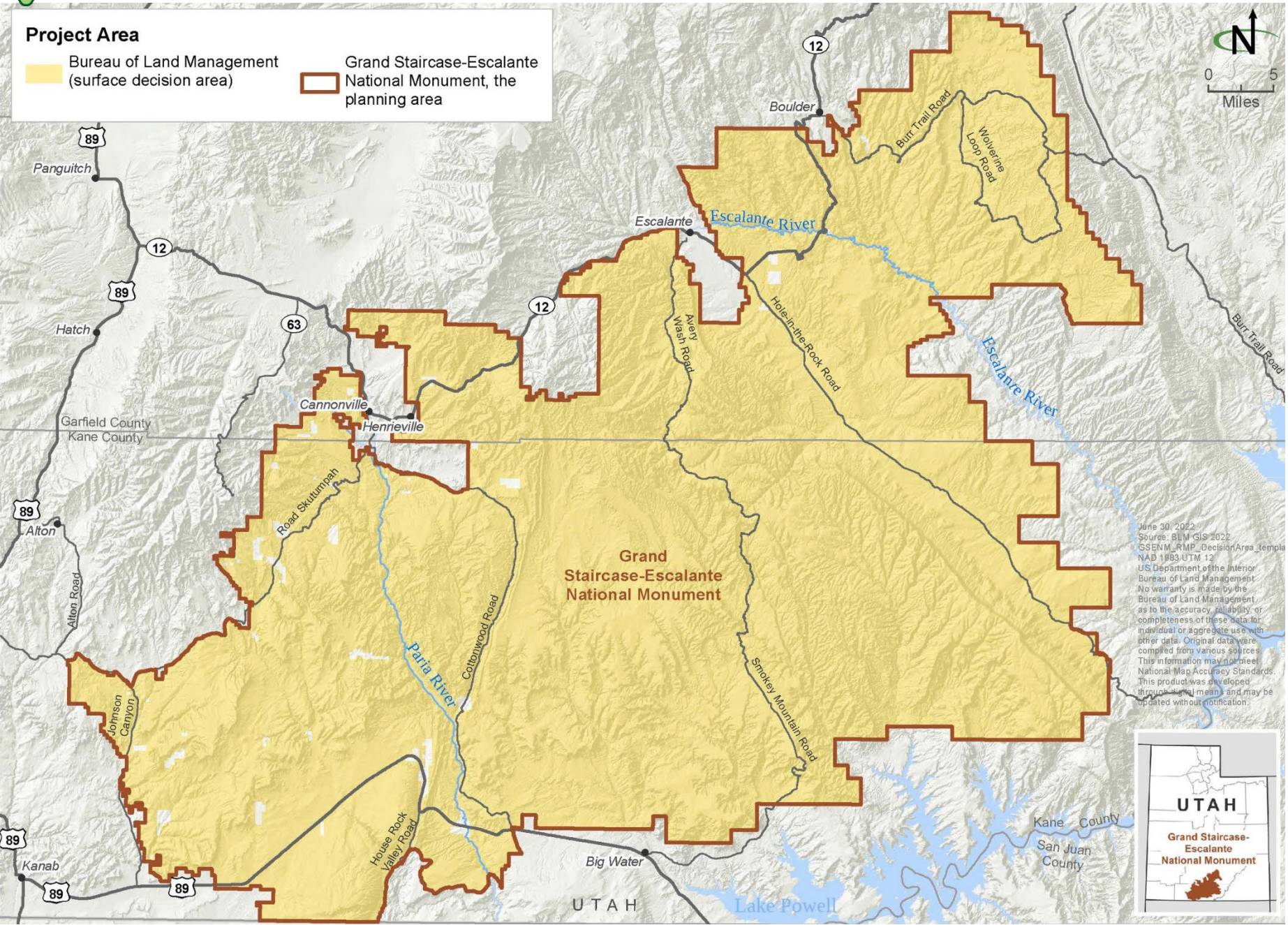
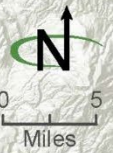
Membership

| | Category | Appointee |
|----|------------------------------|-----------------------|
| 1 | Local Elected Official | Commissioner Tebbs |
| 2 | Local Elected Official | Commissioner Gant |
| 3 | State Government | Jefferey Owens, J.D. |
| 4 | Tribal Interests | Henry (Hank) Stevens |
| 5 | Education | Joel Pederson, PhD |
| 6 | Developed Outdoor Recreation | William Weppner, PhD |
| 7 | Conservation | Sarah Bauman |
| 8 | Grazing Permittee | Stephen Westhoff |
| 9 | Private Landowner | Drew Parkin |
| 10 | Public-at-Large | Jacqueline Grant, PhD |
| 11 | Local Business Owner | Lanse Chournos |
| 12 | Dispersed Recreation | Raymond Berry, J.D. |
| 13 | Ecologist | Vacant |
| 14 | Paleontologist | Vacant |
| 15 | Archaeologist | Vacant |



Project Area

- Bureau of Land Management (surface decision area)
- Grand Staircase-Escalante National Monument, the planning area



June 30, 2022
 Source: BLM GIS 2022
 GSENM_RMP_DecisionArea_Template
 NAD 1983 UTM 12
 US Department of the Interior
 Bureau of Land Management
 No warranty is made by the
 Bureau of Land Management
 as to the accuracy, reliability or
 completeness of these data for
 individual or aggregate use with
 other data. Original data were
 compiled from various sources.
 This information may not meet
 National Map Accuracy Standards.
 This product was developed
 through digital means and may be
 updated without notification.





History

- The first committee meeting was held Jan. 6-7, 2004.
- Prior to 2022, the committee had not conducted a MAC meeting since Feb. 2-3, 2017.
- In 2019 and 2020, GSENM provided Monument updates to the Utah State Resource Advisory Council in lieu of not having a quorum to conduct a Monument Advisory Committee meeting.
- Two virtual public meetings were held on July 12, 2022, and Oct. 18, 2022. The next scheduled virtual public meeting is scheduled for Dec. 13, 2022.
- Anticipate two to four meetings in 2023.



Recent Meeting

The committee met virtually yesterday, Oct. 18.





Next Steps

- There are two nominations approved for appointment from the March 2022 Call for Nominations.
- On Oct. 5, 2022, the BLM initiated a 30-day Call for Nominations to solicit nominations for all current vacancies and anticipated 2023 vacancies. All nominations must be received no later than Nov. 4, 2022.
- Will continue to hold advisory committee meetings and request input from the Monument Advisory Committee.



Thank you! Questions?





U.S. Department of the Interior
Bureau of Land Management

Utah Resource Advisory Council October 19, 2022

Paria River District – Grand Staircase-Escalante National Resource Management Planning





Welcome

Harry Barber,
Bureau of Land Management
District Manager,
Paria River District

669 S. Hwy 89A,
Kanab, Utah 84741
435-644-1200
hbarber@blm.gov





Overview

- Planning history on the Monument
- The why
- Boundaries and map
- Stakeholders
- Consulting parties
- Planning to date
- Preliminary planning concerns
- What's next



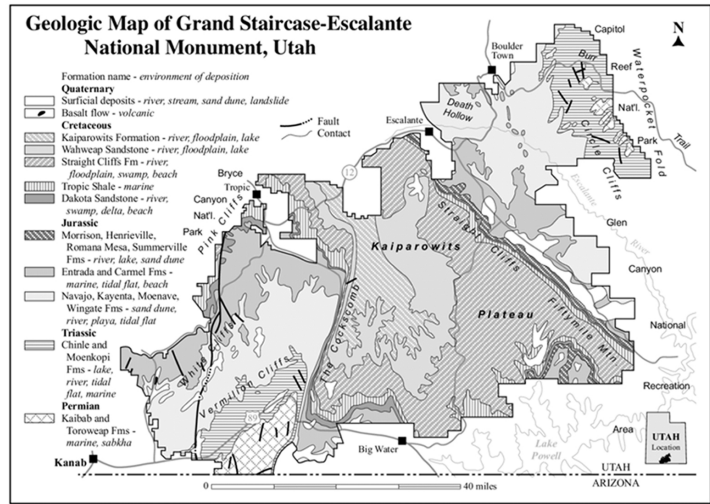
Planning history on the Monument



U.S. Department of the Interior
Bureau of Land Management

Grand Staircase-Escalante National Monument Timeline

| Sept. 18 1996 | Oct. 9 1998 | Nov. 15 1999 | Dec. 4 2017 | Feb. 6 2020 | Oct. 8 2021 |
|---|--|--|--|---|--|
| <p>PROCLAMATION 6920 DESIGNATED APPROXIMATELY 1.7 MILLION ACRES AS A NATIONAL MONUMENT, TO EMPHASIZE THE DIVERSE AND INTACT PHYSICAL, BIOLOGICAL, AND HISTORICAL RESOURCES THAT PROVIDE FOR A SCIENCE FOCUSED MONUMENT. THIS WAS THE FIRST TIME A NATIONAL MONUMENT WAS ESTABLISHED UNDER THE PURVIEW OF THE BLM. ADDITIONALLY, ESTABLISHING SUCH A BLM UNIT FOR SCIENTIFIC PURPOSES WAS AND IS UNIQUE.</p> | <ul style="list-style-type: none"> FOLLOWING THE DESIGNATION OF THE MONUMENT, CONGRESS PASSED THE UTAH SCHOOLS AND LAND EXCHANGE ACT, WHICH ADDED APPROXIMATELY 200,000 ACRES OF STATE LAND INHOLDINGS TO THE MONUMENT, FOR A TOTAL OF ABOUT 1.9 MILLION ACRES. | <ul style="list-style-type: none"> THE APPROVED MONUMENT MANAGEMENT PLAN WAS SIGNED BY THE SECRETARY OF INTERIOR. THE PLAN BECAME EFFECTIVE IN FEB. 2000. | <ul style="list-style-type: none"> PROCLAMATION 9682 REDUCED THE MONUMENT BY MORE THAN 800,000 ACRES, TRANSFERRING THESE ACRES TO THE KANAB ESCALANTE PLANNING AREA AND REDUCING THE MONUMENT TO ABOUT 1 MILLION ACRES, WHICH WERE DIVIDED INTO THREE DISTINCT UNITS. | <ul style="list-style-type: none"> THE APPROVED RESOURCE MANAGEMENT PLANS FOR THE GRAND STAIRCASE, KAIPAROWITS, AND ESCALANTE CANYONS UNITS AND THE KANAB ESCALANTE PLANNING AREA WERE APPROVED. THE PLANS BECAME EFFECTIVE IMMEDIATELY. | <ul style="list-style-type: none"> PROCLAMATION 10286 RESTORED MORE THAN 800,000 ACRES OF BLM-MANAGED LAND TO THE MONUMENT, IDENTIFIED INNUMERABLE OBJECTS OF HISTORIC OR SCIENTIFIC INTEREST FOR PROTECTION, DESIGNATED THE MONUMENT TO BE MANAGED AS A SINGLE UNIT, AND WILL HELP ENSURE NEARLY 1.9 MILLION ACRES LOCATED IN SOUTH CENTRAL UTAH, WITHIN THE COLORADO PLATEAU GEOGRAPHIC REGION, REMAIN AN ECOLOGICAL, SCIENTIFIC, AND CULTURAL "LIVING LABORATORY" NATIONAL MONUMENT. |





Why?

- A new management plan is required by [Proclamation 10286](#) (Oct. 8, 2021)
- Guidance for [“Interim Management of Grand Staircase-Escalante National Monument”](#) issued by the BLM Director (Dec. 16, 2021).
 - Memorandum directs BLM-Utah to begin management planning for the purpose of protecting and restoring the objects identified in Proclamation 10286.
 - Proclamation 10286 dedicates the lands within the Grand Staircase to a specific use, therefore the lands reserved within the Monument boundary must be managed in a manner that protects the objects and values for which the Monument has been designated.
 - *“In other words, within Grand Staircase, typical multiple-use management is superseded by the direction in Proclamation 10286 to protect monument objects. Multiple uses are allowed only to the extent they are consistent with the protection of the objects and values within the monument.”*



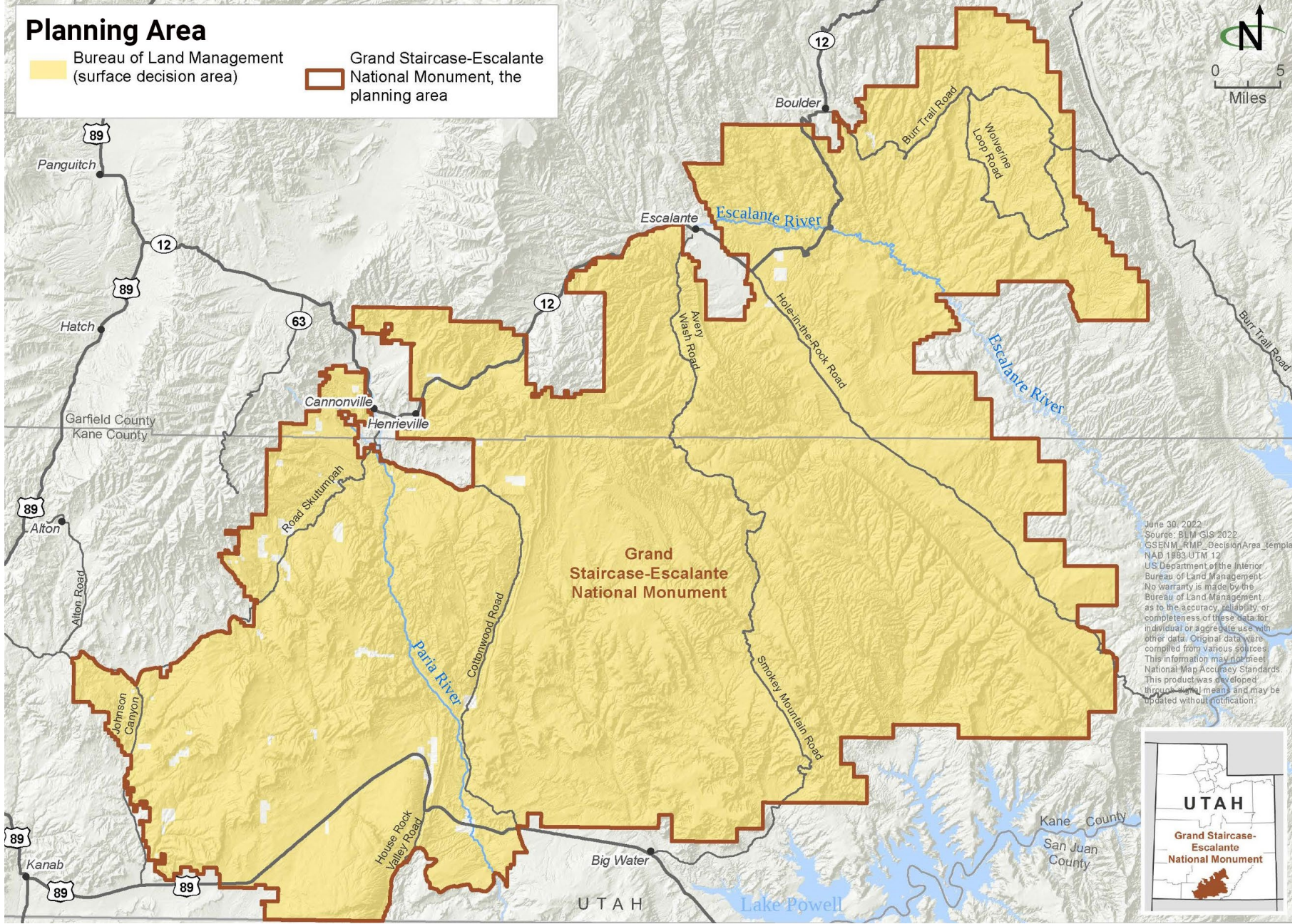
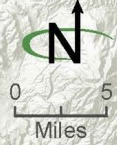
Why? continued

- A new management plan will establish management goals, objectives and directions that ensure conformance with Proclamation 10286 and guide future management actions that will ensure protection of Monument objects and values, consistent with Proclamation 10286.
- Responds to new issues, laws, regulations, policy or changed circumstances.
- Provides analysis to support the BLM in identifying allowable and sustainable uses, and discretionary uses.
- Establishes a balance between resource use and resource protection.
- Provides the foundation of project-level decisions.
- Provides the basis for legally defensible project-level decisions.



Planning Area

- Bureau of Land Management (surface decision area)
- Grand Staircase-Escalante National Monument, the planning area



June 30, 2022
 Source: BLM GIS 2022
 GSENM_RMP_DecisionArea_template
 NAD 1983 UTM 12
 U.S. Department of the Interior
 Bureau of Land Management
 No warranty is made by the
 Bureau of Land Management
 as to the accuracy, reliability, or
 completeness of these data for
 individual or aggregate use with
 other data. Original data were
 compiled from various sources.
 This information may not meet
 National Map Accuracy Standards.
 This product was developed
 through digital means and may be
 updated without notification.





Stakeholders, Advisory Committee & Consulting Parties

Elected Officials

- Senators Mike Lee & Mitt Romney (UT)
- Representatives Chris Stewart (UT-02-R), Blake Moore (UT-01-R), John Curtis (UT-03-R), Burgess Owens (UT-04-R)

State and County

- Kane County Commission
- Garfield County Commission
- Utah's Public Lands Policy Coordination Office
- School and Institutional Trust Lands Administration
- Utah State Historic Preservation Office

Federal Agencies

- National Park Service
- Glen Canyon Recreation Area

NGOs

- Environmental organizations
- Recreation advocates

Grand Staircase-Escalante National Monument Advisory Committee

Consulting Parties under NHPA anticipated to include:

- **Federal agencies**
- **State/Local Governments**
- **Tribes**
- **NGOs**
- **Governments**



Planning to date

- Pre-planning activities included: RMP Preparation Plan, initial agency coordination, contracting, and standing up the MAC.
- The BLM published the Notice of Intent (NOI) to prepare a new Resource Management Plan and Environmental Impact Statement on July 29, 2022.
 - Publication of the NOI initiated a 60-day public comment period that concluded Sept. 27, 2022.
 - Two virtual public meetings held on Aug. 17 and Aug. 30, 2022.
 - Three in-person public meetings held on Aug. 24, Aug. 31, and Sept. 7, 2022.
 - The Analysis of the Management Situation (AMS) released on Aug. 26, 2022.
 - AMS forwarded to MAC for review and comment on Aug. 29, 2022.
 - MAC provided input for the AMS on Oct. 18, 2022.
- There have been three cooperating agency meetings to date.



Preliminary planning concerns

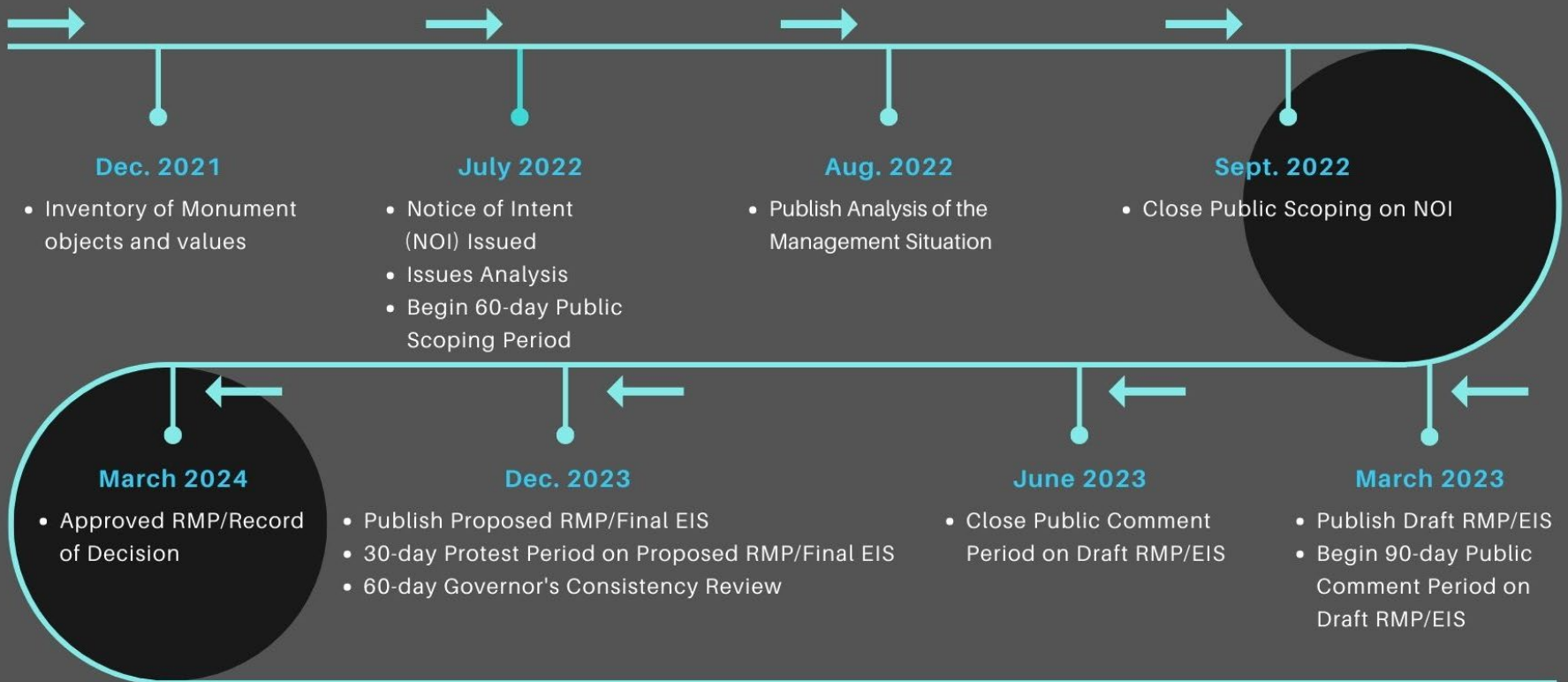
- Science ([both Basic and Applied](#))
- Special Land Designations for Conservation and Protection
- Cultural Resource Management, Native American Religious Concerns, and Tribal Use
- Climate Change and Air Quality
- Landscape Characteristics including Visual Resources, Scenery, Dark Night Skies, and Natural Soundscapes
- Environmental Justice, and Social and Economic Values
- Fuels, Wildfire and Prescribed Fire, and Forestry and Woodlands
- Hydrology (Groundwater, surface water, wetlands, riparian areas, floodplains, water quality)
- Lands and Realty
- Paleontological and Geological Resources
- Recreation Use and Visitor Services
- Minerals
- Terrestrial Habitat, and Vegetation Resilience and Conservation
- Noxious Weeds and Invasive Non-native Plants
- Rangeland Health and Livestock Grazing Management
- Wildlife and Fisheries
- Access Management
- Soils and Biological Soils Crusts



What's Next?

RMP/EIS Planning Timeline

Grand Staircase-Escalante National Monument





U.S. Department of the Interior
Bureau of Land Management

Thank you! Questions?





U.S. Department of the Interior
Bureau of Land Management

Utah Resource Advisory Council October 19, 2022

Canyon County District – Bears Ears National Monument





Nicollee Gaddis-Wyatt
Canyon Country District Manager
Moab and Monticello
435-220-0046
ngaddiswyatt@blm.gov

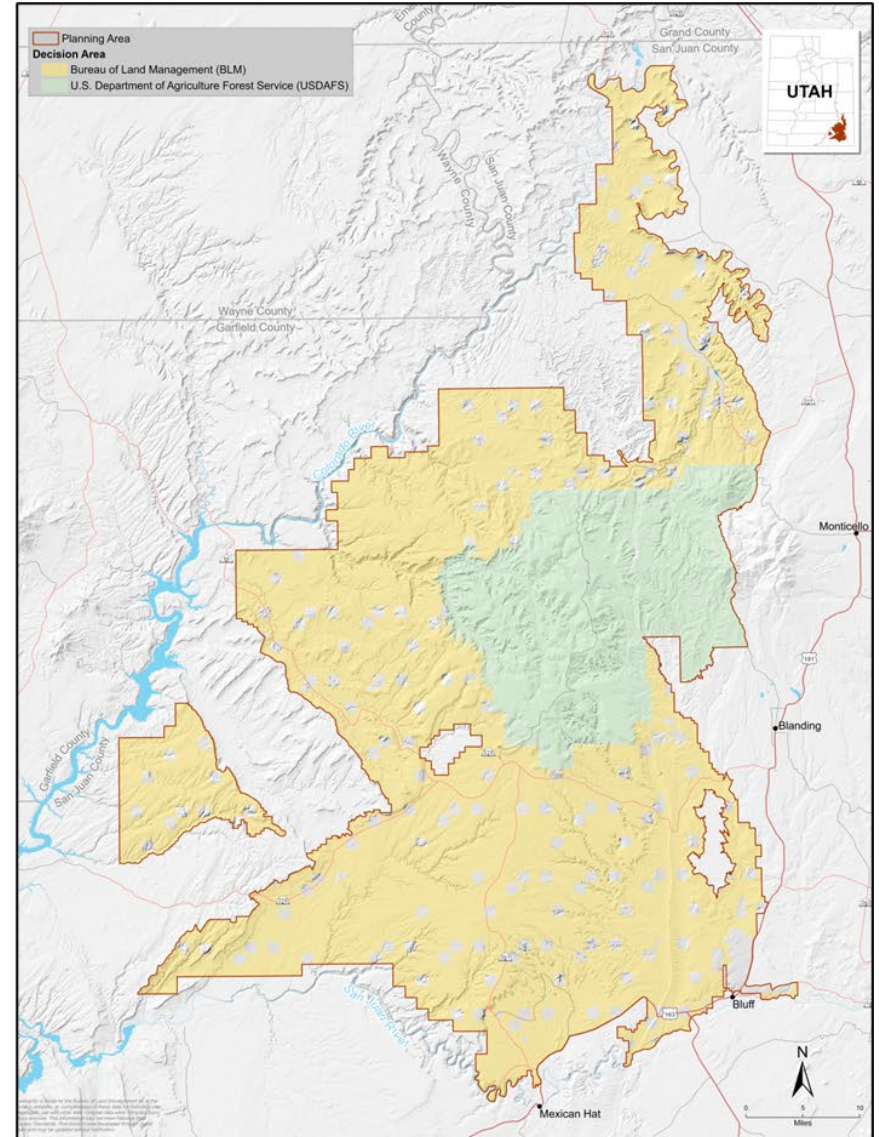
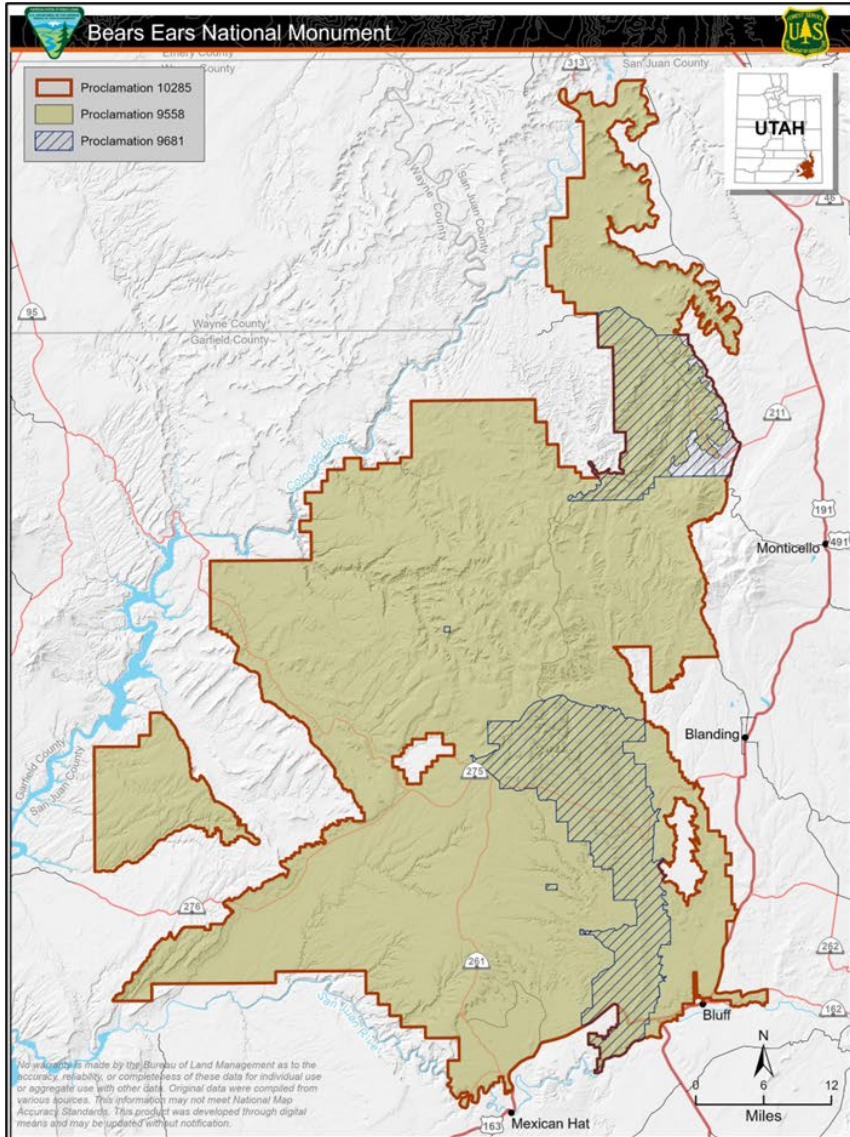
Jake Palma
Monticello and Bears Ears National Monument Field Manager
jepalma@blm.gov

Jared Lundell
Acting Bears Ears National Monument Manager
mlundell@blm.gov





Planning Area Maps





Cooperative Management and Tribal Engagement



Bears Ears Commission

- Ute Mountain Ute
- Hopi
- Navajo
- Zuni
- Northern Ute

Native American Tribes

- 32 Tribal Nations



Why?

- A new management plan is required by Proclamation 10285
- Establishes management goals, objectives and directions that ensure conformance with Proclamation 10285 and guide future management actions
- Responds to new issues, laws, regulations, policy or changed circumstances
- Provides analysis to support the BLM and USDA Forest Service in identifying allowable and sustainable uses
- Establishes a balance between resource use and resource protection
- Provides the foundation of project-level decisions
- Provides the basis for legally defensible project-level decisions



Stakeholders and Advisory Committee

Elected Officials

- Senators Mike Lee & Mitt Romney (UT)
- Representatives Blake Moore (UT-01-R), Chris Stewart (UT-02-R), John Curtis (UT-03-R), Burgess Owens (UT-04-R)

State and County

- Utah's Public Lands Policy Coordination Office
- School and Institutional Trust Lands Administration
- Utah State Historic Preservation Office
- San Juan & Grand counties
- Cities of Blanding, Bluff, and Monticello

Bears Ears National Monument Advisory Committee

Federal Agencies

- National Park Service
- U.S. Fish and Wildlife Service
- U.S. Army Corps of Engineers
- U.S. Bureau of Reclamation
- U.S. Department of Energy



Planning Schedule So Far

- The Federal agencies released the notice of intent to prepare the EIS/RMP on August 30, 2022. The public scoping period is underway.
- The Federal Agencies released the analysis of management situation in early October.
- There has been two meetings with cooperating agencies and regular engagement with the Bears Ears Commission.

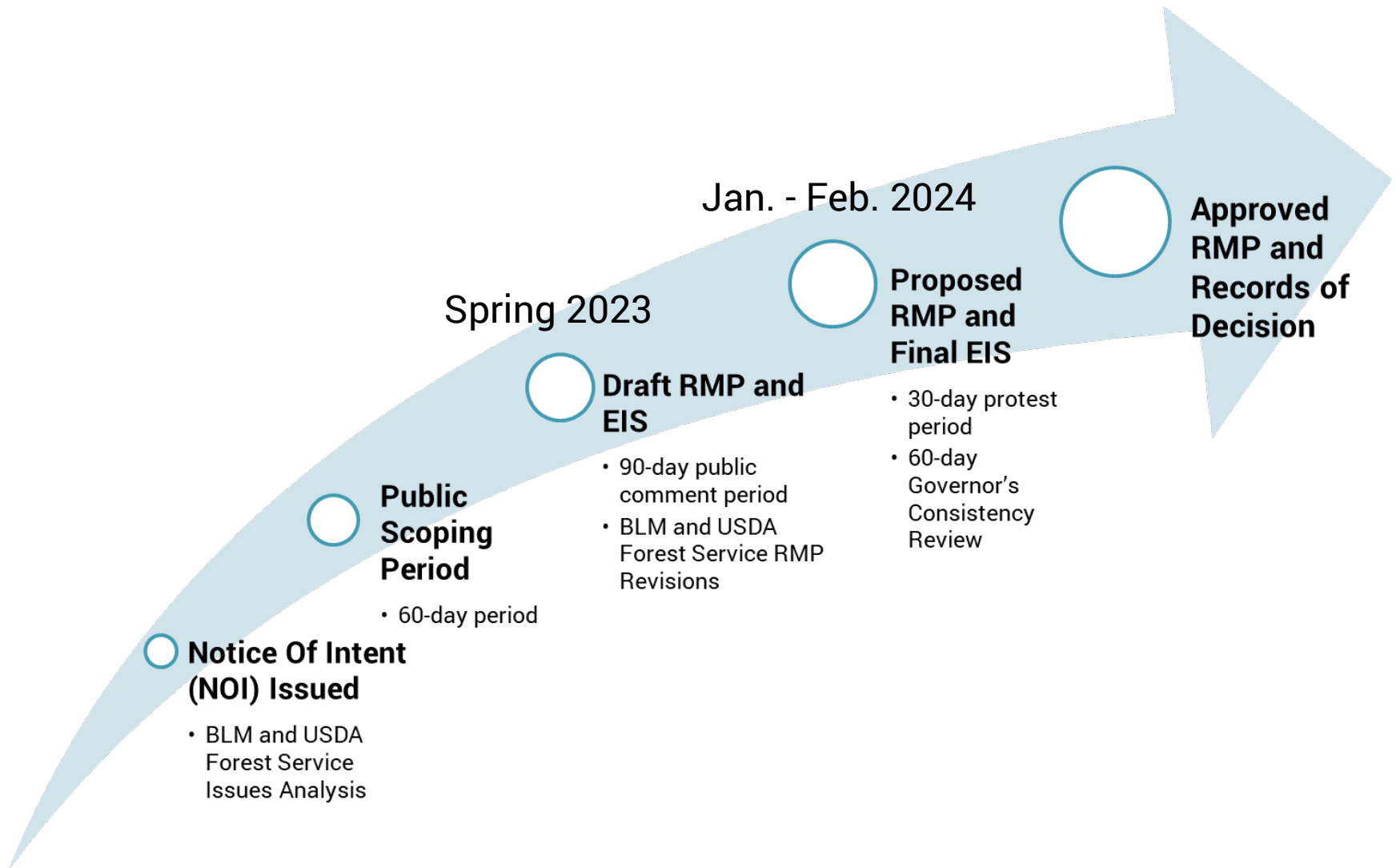


Preliminary Planning Concerns

- Cultural Resources and Native American Religious and Cultural Concerns
- Landscape Characteristics
- Hydrology
- Groundwater, Surface Water, Wetlands, Riparian Areas, Floodplains, and Water Quality
- Wildfire and Fuels, Forestry and Woodland Products
- Wildlife and Fisheries
- Paleontology and Geology
- Recreation Use and Visitor Services



What's Next: Planning Timeline



Jan. - Feb. 2024

Spring 2023



How you can help!

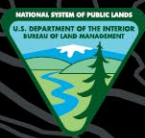
- Submit comments and encourage others to submit comments!
 - ePlanning website: <https://bit.ly/3UaNLkD>
 - Regular mail:
 - Bureau of Land Management - Bears Ears National Monument P.O. Box 7, Monticello, Utah 84535
 - Questions? Accommodation requests?
 - E-mail: BLM_UT_MT_Comments@blm.gov

Comments at this stage must be received by Oct. 31, 2022. We encourage you to submit comments on the draft plan as well!



U.S. Department of the Interior
Bureau of Land Management





U.S. Department of the Interior
Bureau of Land Management

BLM Utah Introduction to the Federal Lands Recreation Enhancement Act

Evan Glenn – Utah Bureau of Land Management Recreation Program Lead



Recognize this popular BLM Utah recreation site with fees authorized by this Act?



Today's presentation is a very brief overview of Federal Lands Recreation Enhancement Act and the Recreation Resource Advisory Committee's role as defined by the Federal Lands Recreation Enhancement Act.

Explore the Act for yourself!

<https://uscode.house.gov/view.xhtml?path=/prelim@title16/chapter87&edition=prelim>





Act signed into Law in 2004 by George W. Bush.

Agencies are authorized to charge fees at recreation sites until October 1, 2023. Initial authority was for a 10-year period, expiring December 8, 2014; multiple extensions have been enacted. Recently renewed annually.

Congress oversees program administration and considers program changes.





Background

The Federal Lands Recreation Enhancement Act (FLREA; 16 U.S.C. §§6801-6814) authorizes five agencies to charge and collect recreation fees on federal recreational lands and waters.

- **Department of Interior**
 - Bureau of Land Management
 - Bureau of Reclamation
 - Fish and Wildlife Service
 - National Park Service Department of Agriculture.
- **Department of Agriculture**
 - Forest Service



The Act authorizes different kinds of fees, outlines criteria for establishing fees, and prohibits fees for certain activities or services.

Only Fish and Wildlife Service and National Park Service can charge entrance fees.

The Bureau of Land Management, Bureau of Reclamation, and Forest Service can charge “standard amenity fees” in areas or circumstances with a certain level of services or facilities.

All five agencies can charge an “expanded amenity fee” for specialized facilities and services and special recreation permit fees for specialized uses, such as group activities.

The Act also authorizes sales of National Passes for recreation at sites managed by the agencies.



The Federal Lands Recreation Enhancement Act establishes requirements for public involvement and Recreation Resource Advisory Committee review/recommendation for new fee areas and changes to existing fees.

The Act establishes rules for Recreation Resource Advisory Committee duties, composition, appointment, terms, etc.

Pay with your
Recreation.gov Mobile App



CAMPING
Loop A

PAYMENT INSTRUCTIONS

- 1 Ensure that the campsite(s) you intend to pay for are available.
- 2 Open the Recreation.gov app and sign in.
- 3 Click the "Scan" icon in the bottom menu options. (If prompted, allow camera access.)
- 4 Scan this QR code and follow the on-screen instructions.
- 5 Follow this facility's instructions below after making your payment.

Kalaloch



\$26.00 per night





This legislation benefits public lands visitors by:

- Requiring reinvestment of the majority of recreation fees back to the area of collection.
- Providing an interagency pass program.
- Requiring public involvement in determining fee sites and fees.
- Setting criteria and limits on areas and sites where recreation fees can be charged.
- Providing opportunities for cooperation with gateway communities through fee management agreements for visitor and recreation services, emergency medical services, and law enforcement services.





Context

Approximately 414 of Bureau of Land Management's 4,000 developed recreation sites require a fee.

The BLM manages over 23 million acres of public lands across the State of Utah and currently maintains 86 fee sites, including campgrounds.

Approximately 4,000 of the Forest Service's 30,000 developed recreation sites require a fee.

Most Bureau of Land Management and Forest Service administered lands are available for public use with no fee.

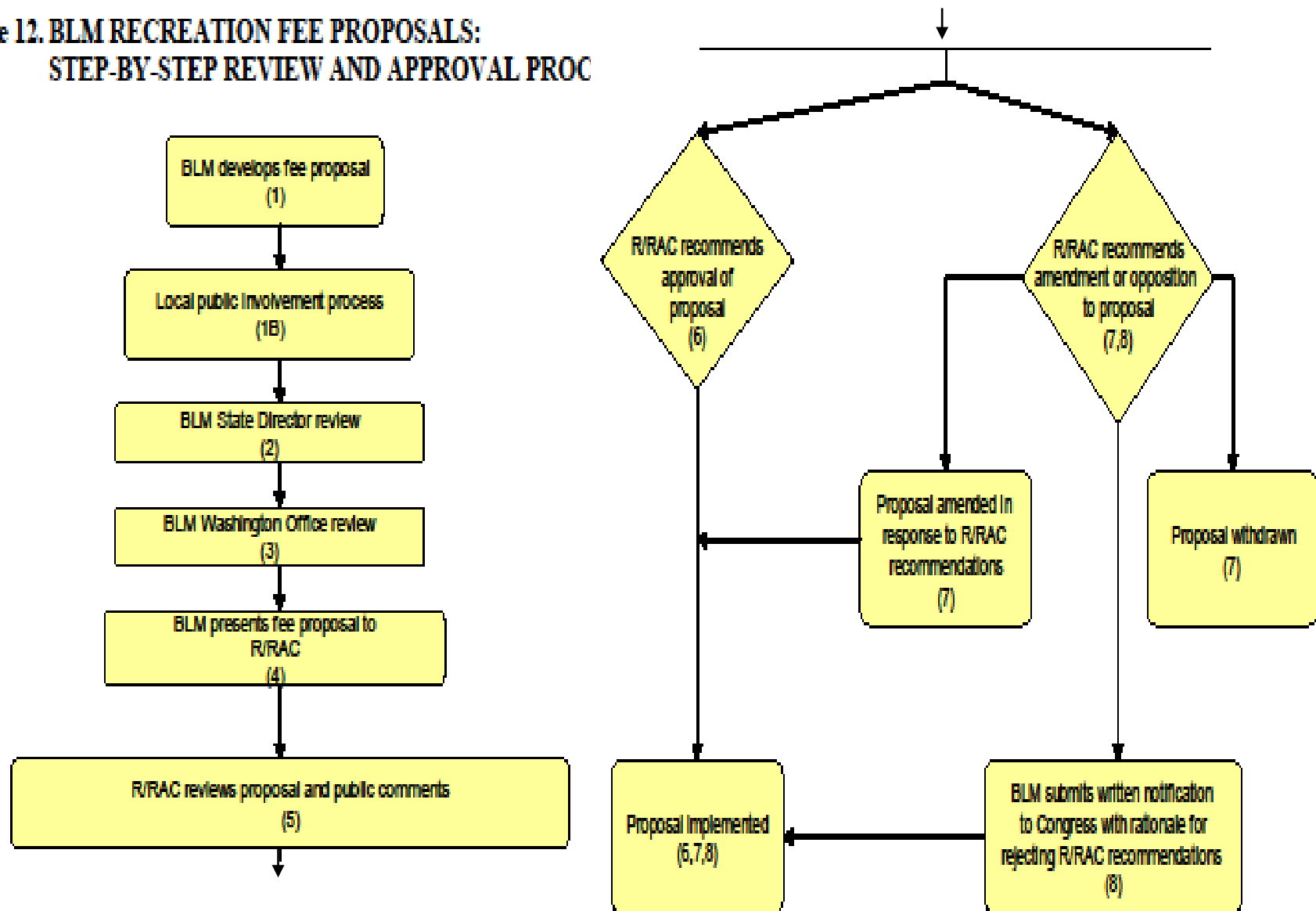


FLREA revenue can be used for:

- Repair, maintenance, and facility enhancement related directly to visitor enjoyment, visitor access, and health and safety.
- Interpretation, visitor information, visitor service, visitor needs assessments, and signs.
- Habitat restoration directly related to wildlife-dependent recreation that is limited to hunting, fishing, wildlife observation, or photography.
- Law enforcement related to public use and recreation
- Direct operating or capital costs associated with the recreation fee program
- Fee management agreements or a visitor reservation services.



Figure 12. BLM RECREATION FEE PROPOSALS:
STEP-BY-STEP REVIEW AND APPROVAL PROC





The Recreation Resource Advisory Committee plays an important role in public lands recreation fees.

Primarily to make recommendations to the agencies on proposed business plans to establish, eliminate, or modify recreation fees.

Recommendations may only be made if:

- It is approved by a majority of the Committee
- General public support for the recommendation has been documented





New Fee areas require Federal Register Notice 6 months prior to implementation.

Changes to existing fees can be implemented immediately following Resource Advisory Committee recommendation and State Director approval.

Next slide provides and overview of recreation fee changes in Utah since 2019



- March 2021 Committee Recommendation
 - Kanab BLM – 2 campgrounds from \$5 to \$12 per night and inclusion of \$50 group site.
- November 2020 Committee Recommendation
 - BLM Salt Lake – Five Mile Pass New Special Area, \$10 daily and \$40 annual use fee (January 2023).
 - FS Ferron, Price and Sanpete Ranger Districts - fees changed at 22 campgrounds. \$10 single, \$15 double, \$20 group.
 - FS Moab and Monticello Rangers Districts – fees changed at 8 campgrounds from \$5-10 to \$10-20 per night.
- June 2020 Committee Recommendation
 - BLM Price – Desolation/Gray Canyon River Permits from \$25 per person to \$40 per person per trip.
 - BLM Price – 3 campgrounds from \$8 to \$15 per night and 12 new campgrounds at \$15 per night (January 2023)
- June 2019 Committee Recommendation
 - BLM Richfield – 3 new campground fees. \$15 single, \$75 group. (January 2023)



Upcoming Proposals

Today: Fishlake National Forest new fee sites and changes to existing fees

- Future:
- Moab BLM changes to fees at Sand Flats Recreation Area
 - Cedar City BLM new campground fees
 - Uinta-Wasatch-Cache National Forest broadscale recreation fee proposal





Questions?



Recreation.gov Mobile App

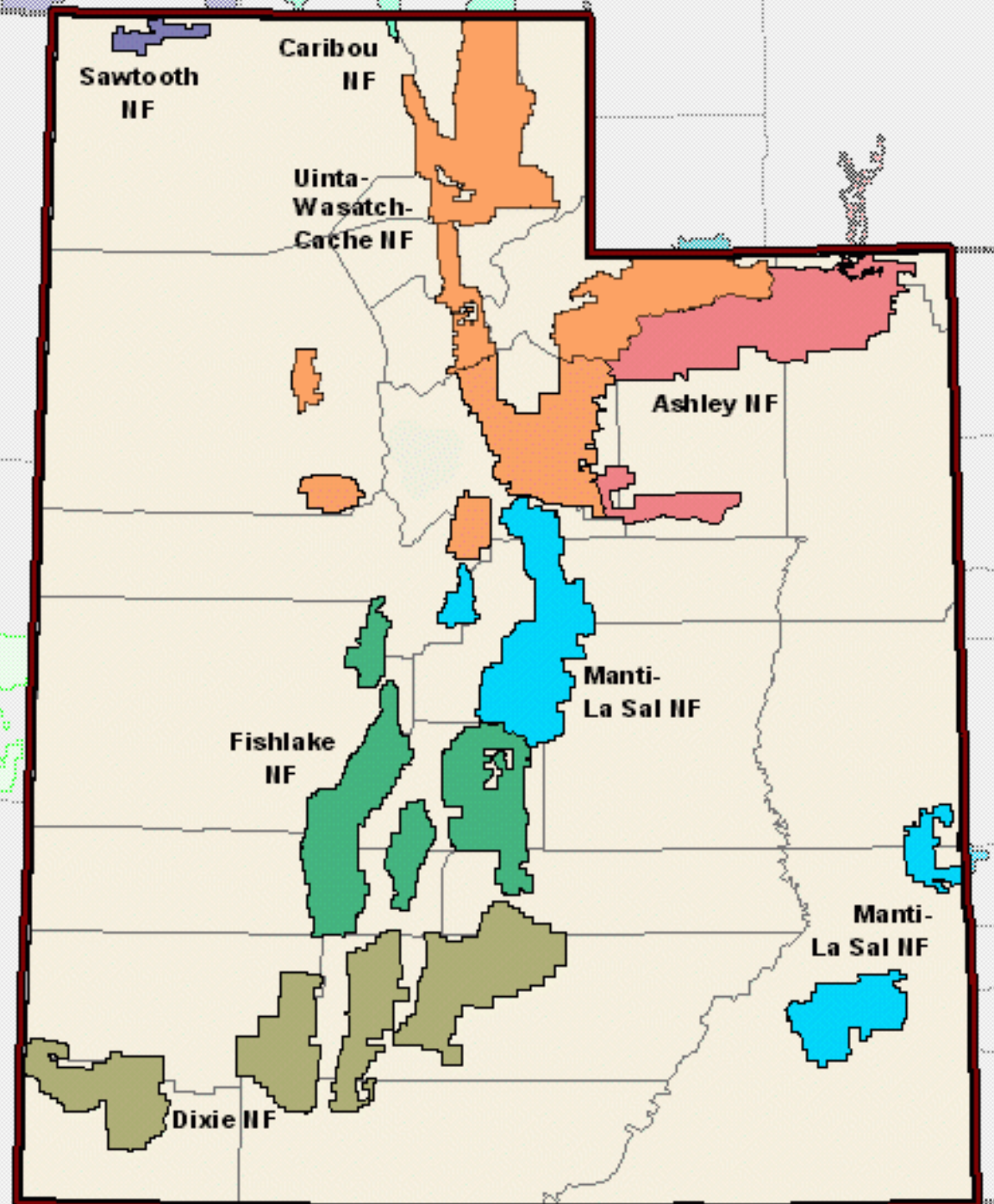
Adventure is at your fingertips with the Recreation.gov mobile app! From booking a weekend getaway to planning a cross-country road trip, the Recreation.gov app helps you find and reserve campsites, review location details for your trip, and quickly access information on past and upcoming reservations.





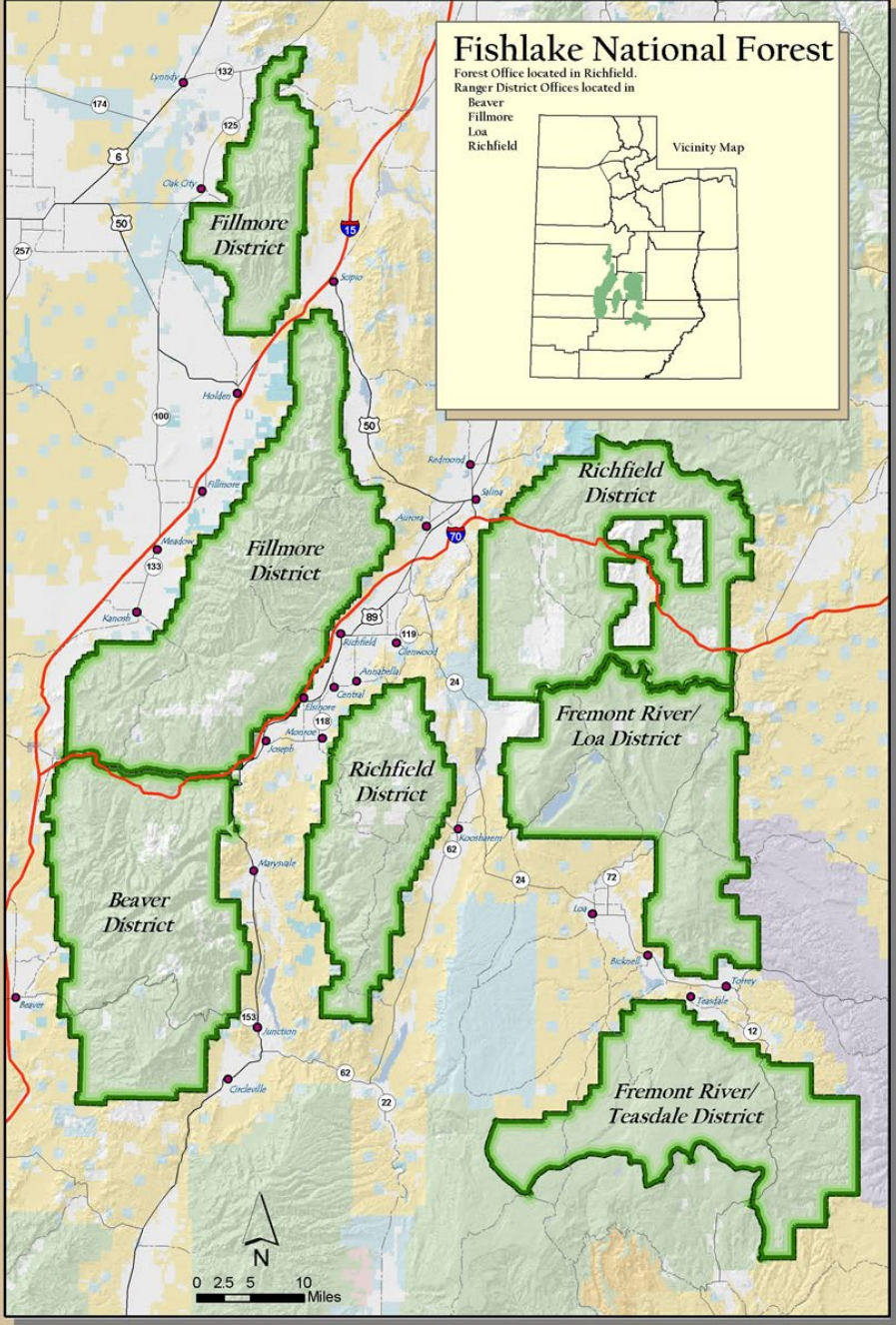
**FISHLAKE NATIONAL FOREST
RECREATION FEE PROPOSAL – 2021 COMMENT PERIOD**

INTERMOUNTAIN REGION - UTAH



Fishlake National Forest

Forest Office located in Richfield.
Ranger District Offices located in
Beaver
Fillmore
Loa
Richfield



FISHLAKE NATIONAL FOREST

Fishlake National Forest

National Visitor Use Monitoring – 2018 Statistics

Forest received 696,000 visitors per year.

Main Activity on Forest

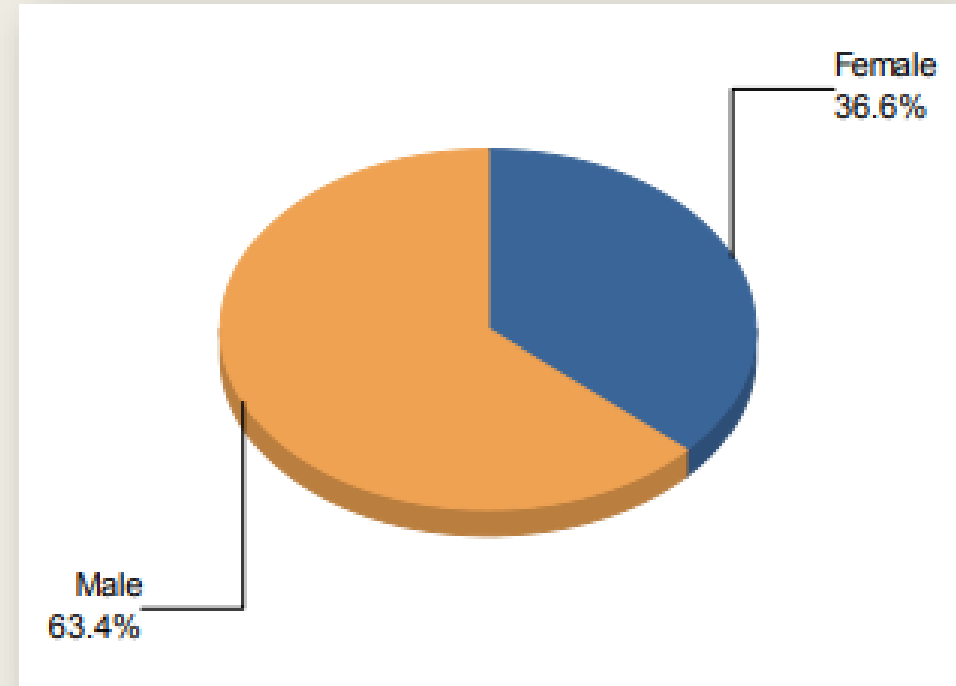
1. Fishing
2. Developed Camping
3. Hunting

Annual Visitation Estimates

- 86,000 visits for overnight use in developed sites
- 382,000 visits for general forest area use
- 228,000 visits for day use at developed sites

Percent of National Forest Visits by Annual Household Income

- 8% Under \$25,000
- 13% \$25,000 to \$50,000
- 27% \$50,000 to \$75,000
- 25% \$75,000 to \$100,000
- 19% \$100,000 to \$150,000
- 9% \$150,000 and up



Fishlake National Forest

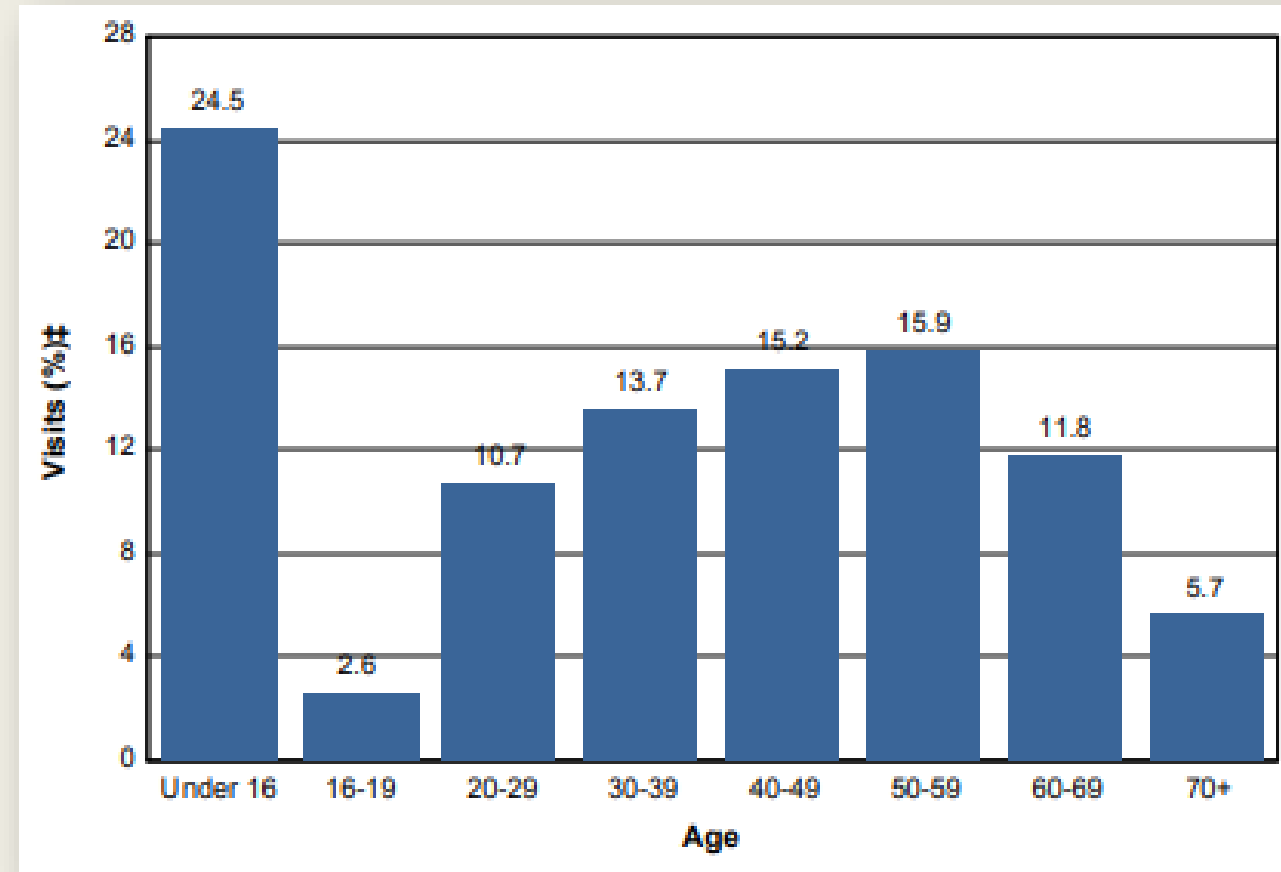
National Visitor Use Monitoring – 2018 Statistics

Percent of National Forest Visitors by Distance Traveled

- 26% 0-25 miles
- 10% 26-50 miles
- 2% 51-75 miles
- 6% 76-100 miles
- 30% 101-200 miles
- 13% 201-500 miles
- 12% Over 500 miles

Area Lodging Use

- 35% Forest Campgrounds
- 26% Undeveloped Camping on Forest Service
- 1% Other Public Campground
- 15% Rented Forest Service Cabin
- 12% Rented Private Home
- 4% Own Home
- 8% Private Campground



Fee Proposal Overview

- Two new cabin rentals
 - *Big Flat Guard Station \$0 to \$50/\$75 per night*
 - *Mt Terrill Guard Station \$0 to \$50 per night*
- One cabin fee increase
 - *Aquarius Guard Station \$35 to \$90 per night*
- One new group picnic site
 - *Twin Creeks Amphitheatre \$0 to \$60 per day/group*





Big Flat Guard Station

Proposed \$0 to \$50 November 1 to May 14

Proposed \$0 to \$75 May 15 to October 31

■ Amenities:

- *Capacity 8 people*
- *Electricity and modern appliances*
- *Fireplace*
- *Running water*
- *Flush toilet*
- *Shower*
- *Fire ring*
- *Picnic table*



Mt. Terrill Guard Station

Proposed \$0 to \$50 per night

- Generally open July 1 to October 31
- Amenities:
 - *Capacity 6 people*
 - *Propane lights and appliances*
 - *Propane heat*
 - *Vault toilet*
 - *Fire ring*
 - *Picnic table*





Aquarius Guard Station

Proposed \$35 to \$90 per night

- Open year-round
- Amenities:
 - *Capacity 4 people*
 - *Propane lights and appliances*
 - *Running water*
 - *Vault toilet*
 - *Wood stove*
 - *Fire ring*
 - *Picnic table*





Twin Creeks Amphitheatre

Proposed \$0 to \$60 per day/group

- Open May 15 to September 15
- Amenities:
 - *Capacity 80 people*
 - *Reservable*
 - *Drinking water*
 - *Flush toilet*
 - *Garbage collected*
 - *Fire ring*
 - *Paved access road and parking*

95%



Repair, maintain, and enhance facilities related directly to visitor access, and health and safety.



Interpretation, visitor information, visitor services, visitor needs assessments, and signs.



Law enforcement related to visitor use.



Habitat restoration directly related to wildlife-dependent recreation including hunting, fishing, wildlife observation, and photography.



Direct operating associated with the recreation fee program.

HOW RECREATION FEES ARE USED

Planned Accomplishments

Cabins

- New flooring, bunk beds, counter tops, propane heater, fire circle, benches, curtains, and painting
- Maintain water system, pump toilets, and gravel parking area

Group Picnic Area

- Painting/staining structures and benches, replace bench planks, etc.



Fishlake National Forest

Public Involvement Actions

- Comment period July 9 to October 1, 2021
 - *Posted on Forest website*
 - *Twitter message and Facebook posts*
 - *Signs posted onsite*
 - *News Release distributed and published*
 - Beaver Journal – September 23
 - Richfield Reaper – September 8
 - Wayne County Insider – September 23
- Federal Register Notice published December 28, 2021



The screenshot shows the Fishlake National Forest website. The header includes the USDA Forest Service logo and the text "Fishlake National Forest". Below the header is a navigation bar with links: "Forest Service Home", "About the Agency", "Contact the National Office", and "Inside the Forest". A sidebar on the left contains a "Site Map" with links to Home, Special Places, Recreation, Alerts & Notices, Passes & Permits, Maps & Publications, Land & Resources Management, Learning Center, Working Together, and About the Forest. Below the sidebar is contact information for the Fishlake National Forest Supervisors Office and Richfield District Office, the Beaver Ranger District, and the Fillmore Ranger District. The main content area features a news release titled "Proposed Changes to Recreation Fees" with a release date of Sep 3, 2021, and contact information for Dan Child. The text of the release discusses proposed fee increases for four recreation sites: Mt. Terrill Guard Station, Big Flat Guard Station, Aquarius Guard Station, and Twin Creeks Amphitheater. A browser toolbar at the bottom shows a zoom level of 125%.

Fishlake National Forest

Public Involvement Actions

- Beaver, Piute, Seiver, and Wayne County Commissioners briefed on August 28 via email
 - *No comments or concerns received*
- Federal Legislators were briefed on August 4
 - *No comments or concerns received*
- Paiute Trail Committee were notified in September
 - *No comments or concerns received*
- The Paiute Tribe of Utah, the Navajo Nation, the Southern Paiute Tribe, and the Hope Tribe were sent letters on August 4
 - *No comments or concerns received*

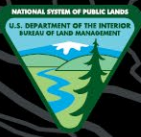
Fishlake National Forest

Overview of Public Results

- Two comments received
(Full comments in package)
 - *Both in opposition of Aquarius fee increase*
- No changes to fee proposal were made after receiving comments.
 - *Both commenters encouraged a reduced fee for smaller group sizes. It was decided that this would be very difficult to manage or enforce.*
 - *Once commenter asked that the fee be reduced by 50% with the America the Beautiful senior pass. This proposal is not preferred because it would result in a need to further increase the fees to non-senior citizens in order to generate the revenue needed to maintain the facility.*



Thank You



U.S. Department of the Interior
Bureau of Land Management

Bipartisan Infrastructure Law (BIL)

BLM Utah Resource Advisory Council Briefing – 10/19/2022





2021 BIL Overview

President Biden signed the Bipartisan Infrastructure Law (BIL) in November 2021 to restore key ecosystems and deliver environmental, social, and economic benefits.

BLM Key Programs:

Wildfire Resilience: BLM aims to improve technologies for pre-season planning, wildfire detection, and real-time monitoring. BLM also reserves funds to reduce fuel near vulnerable communities and to improve ecosystem health, and help communities recover from the devastating effects of large wildfires.

Ecosystem Restoration: BLM funds projects nationwide to: advance partnerships with states and tribes using Good Neighbor Agreements, assess and eradicate invasive species, restore recreation sites and make them more resilient from erosion and human-caused damage, reduce hazards and revegetate affected mine lands, and advance the national revegetation effort and the National Seed Strategy.

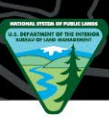
Orphaned Well Clean Up: BLM leads a group of agencies from the DOI and the U.S. Forest Service that distributes funds to states and communities most affected by orphaned and idled wells. About \$4.6 billion is set aside to plug orphaned wells and reclaim lands, including \$250 million for improving federal lands.



BIL Wildland Fire Management

National Overview

- The Bipartisan Infrastructure Law (BIL) provides a total of nearly \$1.5 billion to DOI for the Wildland Fire Management (WFM) programs and activities
- In fiscal year 2022, BLM Fire received \$86 million of BIL funding for several programs including preparedness (workforce reform), fuels management, burned area rehabilitation (BAR), and the Joint Fire Science program
- BLM's initial allocation for Fuels Management was \$38.2 million and the legislation provides for \$878 million over the next five years
- BIL Fuels funding will support:
 - Mechanical Thinning
 - Prescribed Fire
 - Fuel Breaks
 - Employing Contractors, Young Adults, Veterans, and Tribal Nations' Youth
 - Other Fuels Management
- Protects vulnerable communities from wildfire while preparing natural landscapes for a changing climate



BIL Wildland Fire Management

National Overview

- In 2022 BLM was allocated \$37.7 million for Workforce Reform that included Special Pay Supplements of \$20,000 per year, or 50% of base salary (whichever is less) per firefighter, until the money is exhausted
 - All employees that were in a Primary or Secondary covered fire position received the Special Pay Supplements
 - Nationally this covered over 2,400 employees
- Provides a new occupational series to be created that covers positions for which the primary duties involve the prevention, control, suppression, or management of wildland fires(GS-0456)
- Required the development of a new pay table for the GS-0456 wildland fire series
- Established a joint DOI-USFS program that will address mental health needs, including PTSD and suicide prevention for permanent, temporary, seasonal employees



BIL Fuels Management

BLM Utah Overview

- BLM Utah BIL Allocation for FY22
 - \$5.2 million
 - 32 projects throughout the state
 - 11 projects totaling \$964,071 in consultation and contract preparation
 - 21 projects totaling \$4.2 million in mechanical, fire, and chemical/biological treatments
 - 2,797 acres accomplished in FY22
 - 18,920 acres will be completed in FY23 due to timing of FY22 BIL funding



BIL Workforce Reform

BLM Utah Overview

- BLM Utah BIL Workforce Reform Allocation for FY22
 - \$2.5 million
 - Over 200 BLM Utah firefighters received the Special Pay Supplements
 - Received lump sum award as of June 2022, retroactive from date of legislation passage in October 2021
 - From June 2022, employees received a retention bonus that was added to their bi-weekly pay checks
 - These Special Pay Supplements are only expected to be paid out through FY2023



BIL Fuels Management

BLM Utah Overview

- BLM Utah BIL Allocation for FY23
 - \$8 million
 - 45 projects throughout the state
 - 8 projects for \$970,000 in consultation and contract preparation, monitoring, and NEPA
 - 37 projects for \$7 million in mechanical, fire, and chemical/biological treatments.
 - 49,135 target acres for FY23
- Estimated \$8 million/year through FY26



BIL Ecosystem Restoration

- Address the climate crisis
 - Strategic, just, equitable, and efficient investments
 - Ecosystem function, resilience, recreation infrastructure, and adaptability
- Seven themes
 - Restore ecological health
 - State/Tribal restoration projects
 - State/Tribal voluntary restoration
 - Invasive species
 - Recreation
 - Revegetation of mine lands
 - National revegetation



BIL Ecosystem Restoration – FY2022

| Theme | Field Offices | Project Name | FY22 Funding |
|-------------|-------------------------|---|------------------|
| Recreation | Richfield Field Office | Saul's Meadow Campground Improvements | \$70,000 |
| Recreation | Salt Lake Field Office | Rich County (Three Creeks) Riparian Enclosure Maintenance | \$40,000 |
| Recreation | Salt Lake Field Office | Fivemile Pass Site Plan | \$200,000 |
| Recreation | Vernal Field Office | Indian Crossing Parking Area Expansion | \$35,000 |
| Recreation | Vernal Field Office | John Jarvie Ranch Active Walking Path | \$15,000 |
| Recreation | Price Field Office | Jurassic National Monument Visitor Infrastructure Development | \$50,000 |
| Restoration | Cedar City Field Office | Noxious Weed Eradication | \$50,000 |
| Restoration | Salt Lake Field Office | Refuge Pond Reconstruction for Least Chub and Grazing | \$80,000 |
| | | TOTAL | \$540,000 |





Orphaned Wells



This is one of 11 wells that will be plugged in FY2023. The contract will remove all facilities and restore the surrounding public lands.



BLM Orphaned Well Clean Up

FY 2022: BLM Utah contracted for \$1.5 million dollars to plug **11 orphaned wells**, including

- Five wells located in Emery County,
- Five wells located in Grand County,
- One well located in Summit County on USFS surface.

Work began January 2022. Plugging and surface reclamation was completed on all locations by July 2022.

FY 2023: On August 18, 2022, BLM awarded a contract for \$877,352 to plug **11 orphaned wells** located in Grand County.

The 11 wells are located in the Book Cliffs region north of Interstate 70.

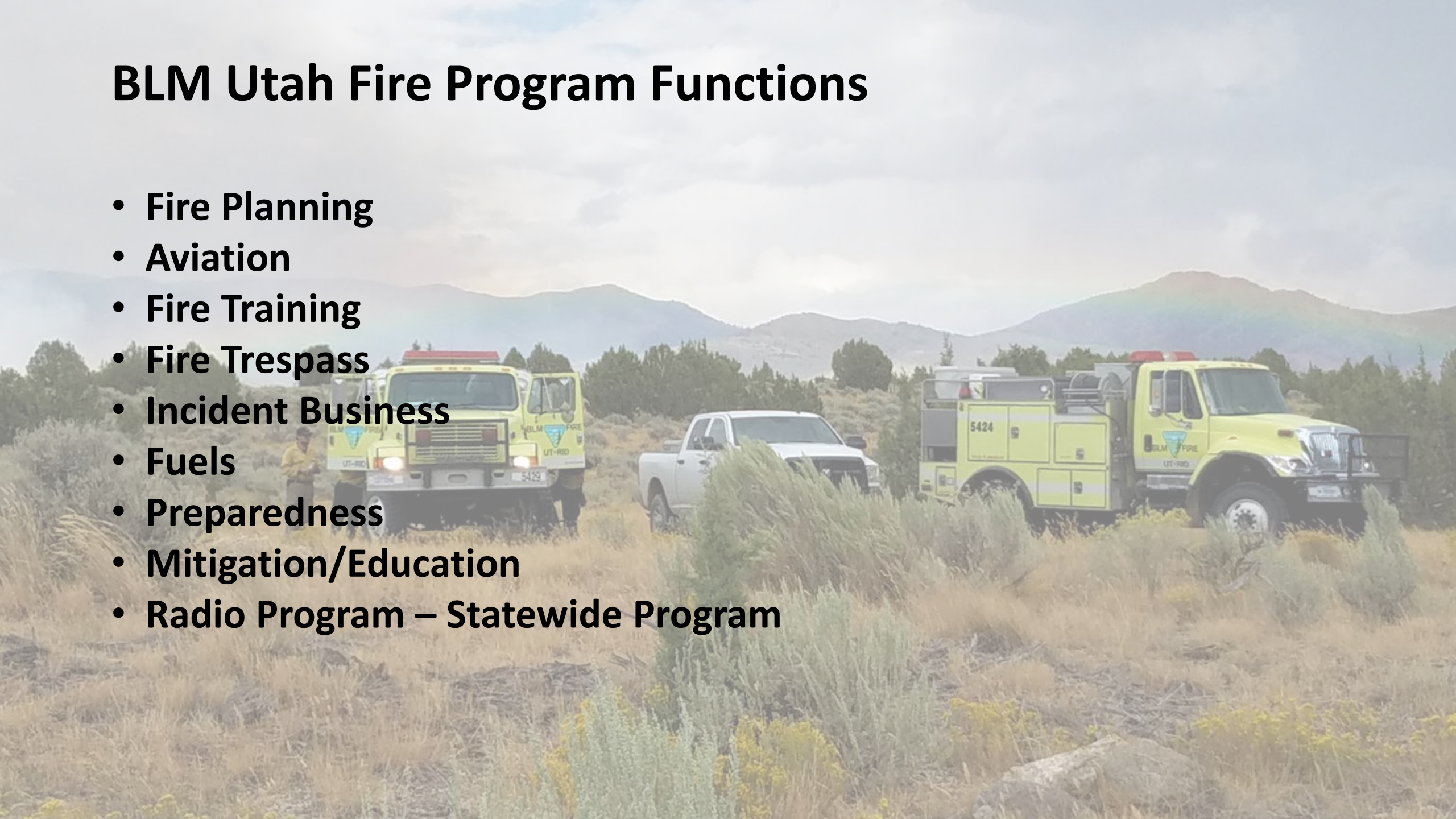
- The project is targeted to commence this fall and be completed by July 2023.
- The BLM Moab Field Office will supervise to ensure the restoration is properly completed.



Questions?

BLM Utah Fire Program Functions

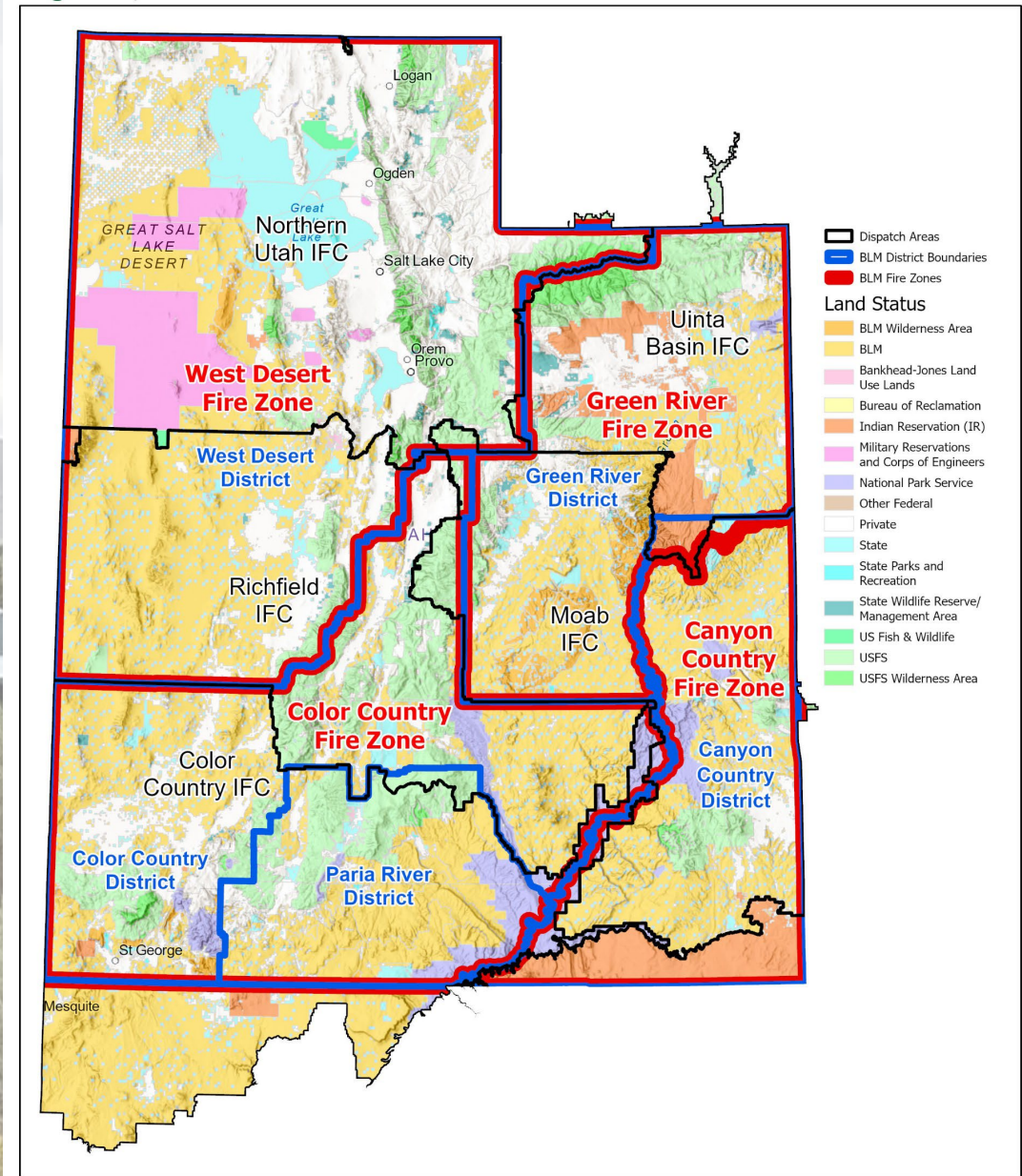
- Fire Planning
- Aviation
- Fire Training
- Fire Trespass
- Incident Business
- Fuels
- Preparedness
- Mitigation/Education
- Radio Program – Statewide Program





Organization

- 4 unique “district” programs
 - West Desert District
 - Green River District
 - Canyon Country District
 - Color Country and Paria River Districts
- 5 interagency dispatch centers
 - Northern Utah IFC
 - Richfield IFC
 - Uintah Basin IFC
 - Color Country IFC
 - Moab IFC



Dispatch Areas

- Black outline

BLM District Boundaries

- Blue outline

BLM Fire Zones

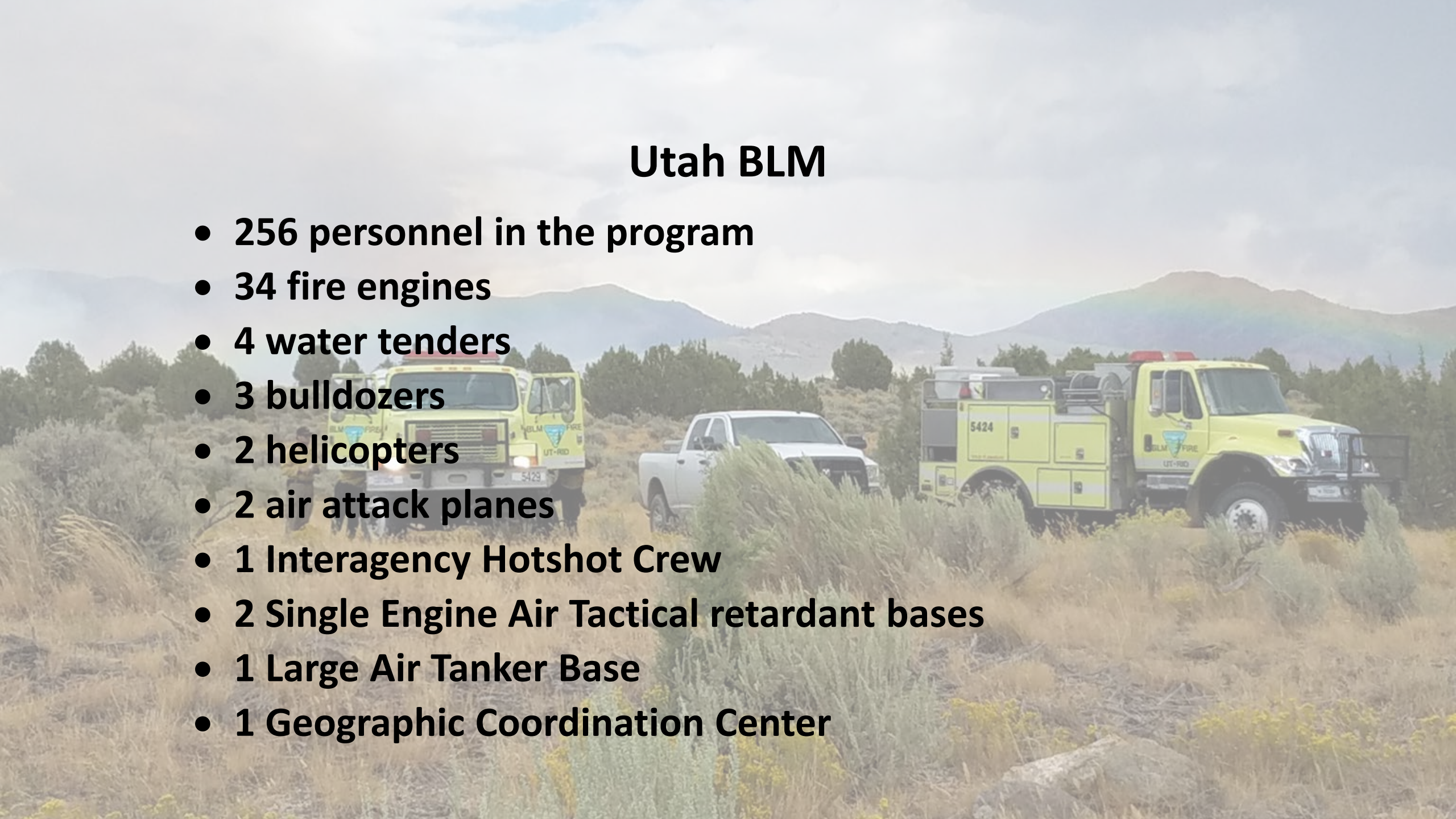
- Red outline

Land Status

- BLM Wilderness Area (Yellow)
- BLM (Light Yellow)
- Bankhead-Jones Land Use Lands (Pink)
- Bureau of Reclamation (Light Green)
- Indian Reservation (IR) (Orange)
- Military Reservations and Corps of Engineers (Light Blue)
- National Park Service (Purple)
- Other Federal (Light Brown)
- Private (White)
- State (Light Blue)
- State Parks and Recreation (Light Blue)
- State Wildlife Reserve/Management Area (Light Green)
- US Fish & Wildlife (Light Green)
- USFS (Light Green)
- USFS Wilderness Area (Light Green)

Utah BLM

- 256 personnel in the program
- 34 fire engines
- 4 water tenders
- 3 bulldozers
- 2 helicopters
- 2 air attack planes
- 1 Interagency Hotshot Crew
- 2 Single Engine Air Tactical retardant bases
- 1 Large Air Tanker Base
- 1 Geographic Coordination Center



2022 Fire Activity

- Human caused fires
 - 55 fires for 526 acres
- Natural caused fires
 - 201 fires for 2,942 acres

| UT 5-Yr Avg. | | Human | Human | Lightning | Lightning | WILDFIRE | | | | | | | | | | Human | Human | Lightning | Lightning | WILDFIRE | |
|---|-----|--------|--------|-----------|-----------|----------|---------|---|-----|-----|-----|--------|-------|-----|-----|--------|--------|-----------|-----------|----------|-------|
| | | Caused | Caused | Caused | Caused | TOTALS | | 2022 | | | | | | | | Caused | Caused | Caused | Caused | TOTALS | |
| | | Fires | Acres | Fires | Acres | FIRES | ACRES | as of 10/8/2022 | | | | | | | | Fires | Acres | Fires | Acres | FIRES | ACRES |
| Bureau of Indian Affairs | BIA | 17 | 767 | 17 | 2,924 | 34 | 4,275 | Bureau of Indian Affairs | BIA | 8 | 33% | 12 | 15% | 16 | 67% | 66 | 85% | 24 | 78 | | |
| Bureau of Land Management | BLM | 104 | 15,093 | 180 | 32,599 | 284 | 47,692 | Bureau of Land Management | BLM | 55 | 21% | 526 | 15% | 201 | 79% | 2,942 | 85% | 256 | 3,468 | | |
| Department of Defense | DOD | 4 | 2,729 | 1 | 1 | 5 | 2,730 | Department of Defense | DOD | 0 | - | 0 | - | 0 | - | 0 | - | 0 | 0 | | |
| U.S. Forest Service | FS | 92 | 18,514 | 118 | 52,356 | 210 | 70,870 | U.S. Forest Service | FS | 42 | 29% | 16,218 | 99% | 105 | 71% | 50 | 1% | 147 | 16,268 | | |
| U.S. Fish & Wildlife Service | FWS | 1 | 0 | 0 | 0 | 1 | 0 | U.S. Fish & Wildlife Service | FWS | 0 | - | 0 | - | 0 | - | 0 | - | 0 | 0 | | |
| National Park Service | NPS | 5 | 6 | 10 | 334 | 15 | 339 | National Park Service | NPS | 3 | 21% | 0 | 0% | 11 | 79% | 26 | 100% | 14 | 26 | | |
| Utah Division of Forestry, Fire & State Lands | ST | 487 | 30,472 | 137 | 33,812 | 624 | 64,284 | Utah Division of Forestry, Fire & State Lands | ST | 335 | 71% | 9,354 | 96% | 135 | 29% | 368 | 4% | 470 | 9,722 | | |
| | | 711 | 67,580 | 386 | 122,611 | 1,173 | 190,191 | | | 443 | 35% | 26,110 | 45.0% | 468 | 65% | 3,452 | 55.0% | 911 | 29,562 | | |