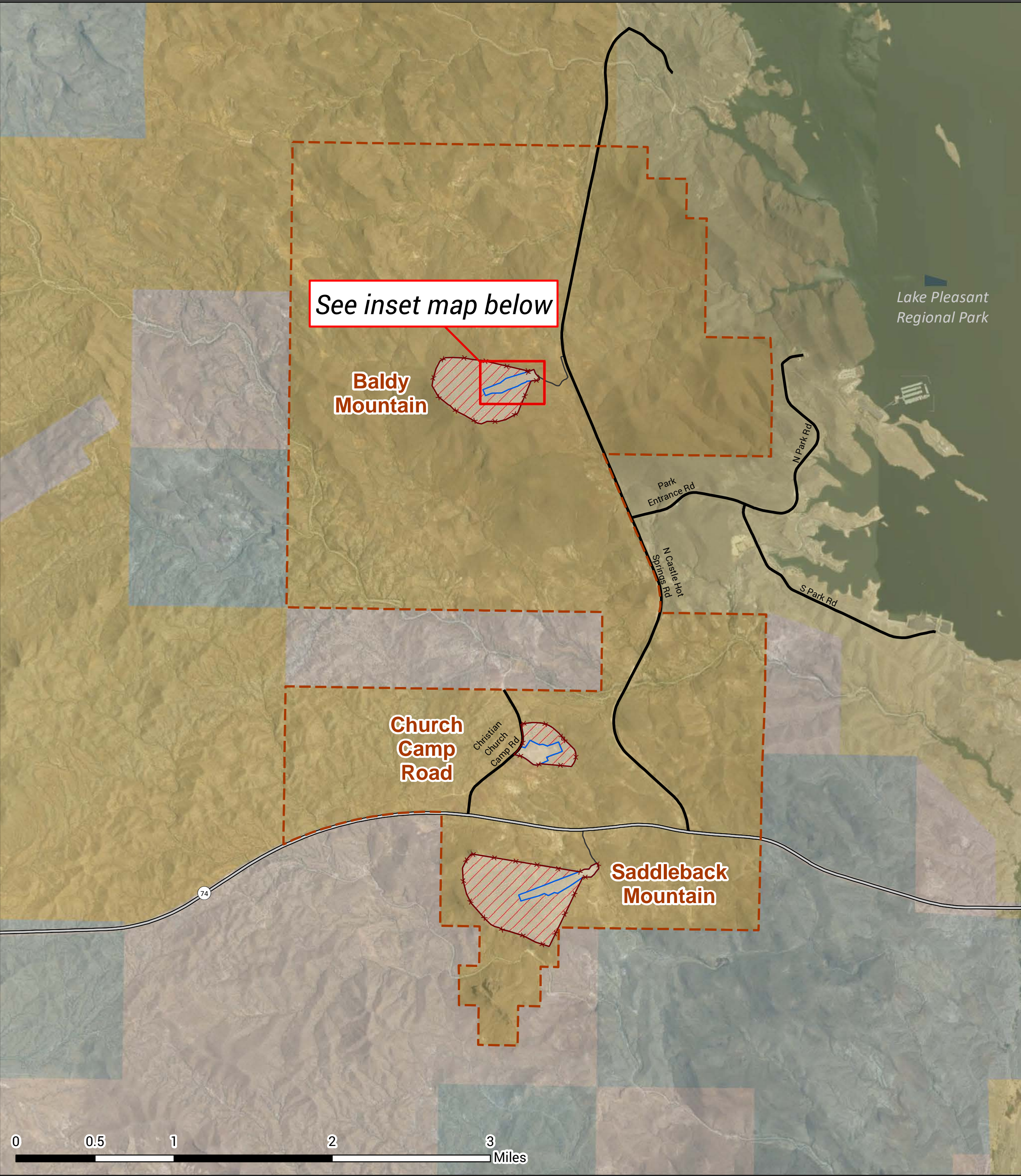




Baldy Mountain Recreational Shooting Sports Site



Legend

- | | |
|--|---------------------------|
| Perimeter Fence | Land Status |
| Facility Area | Bureau of Land Management |
| Hazardous Exclusion Area (No Public Entry) | Bureau of Reclamation |
| Recreation Area | Local or State Parks |
| State Highway | Private |
| Street | State |
| Unpaved Road | |

Area descriptions

The **Facility Area** is the developed recreation site that includes the firing line and may include other amenities like steel targets, information kiosks, trash collection, and parking areas. **In this area, you may only discharge firearms from a designated firing line toward a developed backstop.**

The **Hazardous Exclusion Area** is the designated area adjacent to the facility area where errant or ricochet projectiles could land. **You must not enter the Hazardous Exclusion Area.**

The **Recreation Area** is the larger public land area surrounding the facility area and hazardous exclusion area that requires special management because of the recreational activity that occurs there. **In this area, you may only discharge firearms within a facility area from the designated firing line toward a developed backstop. Discharge of firearms outside of a facility area is prohibited.**

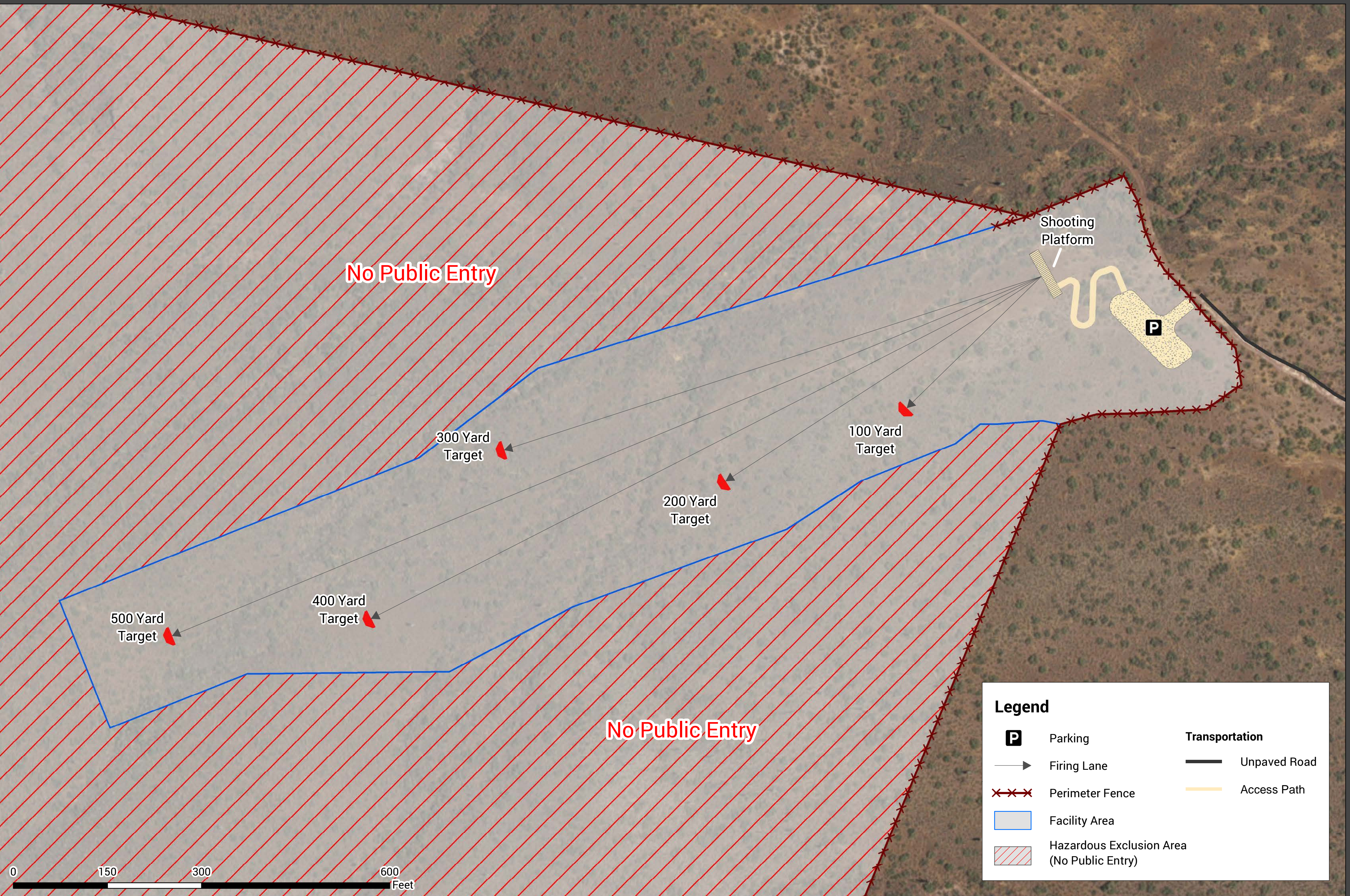
Contact Information

Bureau of Land Management
Phoenix District Office
2020 E Bell Rd
Phoenix, AZ 85022
(602) 867-5400
<https://www.blm.gov/office/phoenix-district-office>
For emergencies, call 911



Created on: 5/5/2022

DISCLAIMER: No warranty is made by the Bureau of Land Management as to the accuracy, reliability, or completeness of these data for individual use or aggregate use with other data. Routes depicted on non-BLM lands are displayed for information purposes only and do not grant access to non-BLM lands.



Legend

- | | |
|--|-----------------------|
| P Parking | Transportation |
| Firing Lane | Unpaved Road |
| Perimeter Fence | Access Path |
| Facility Area | |
| Hazardous Exclusion Area (No Public Entry) | |