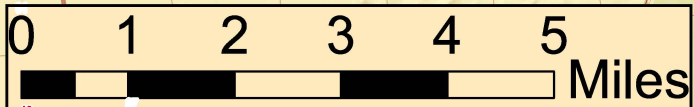
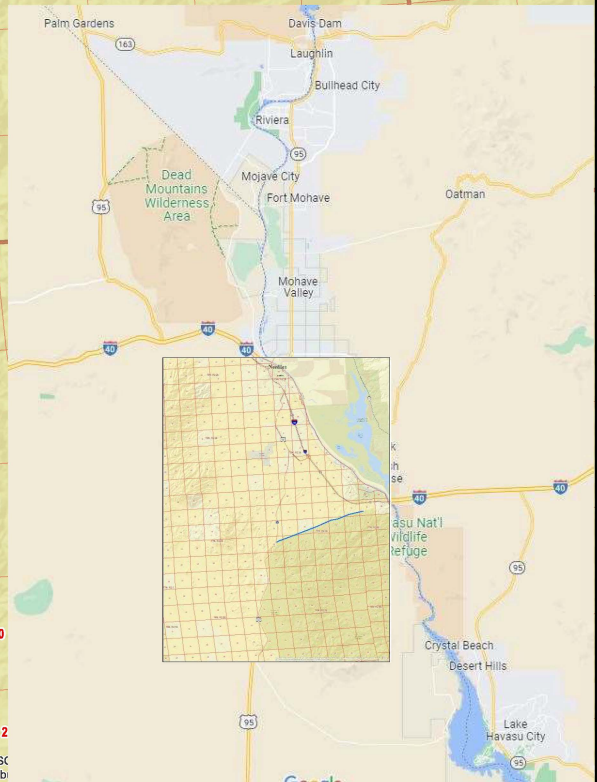
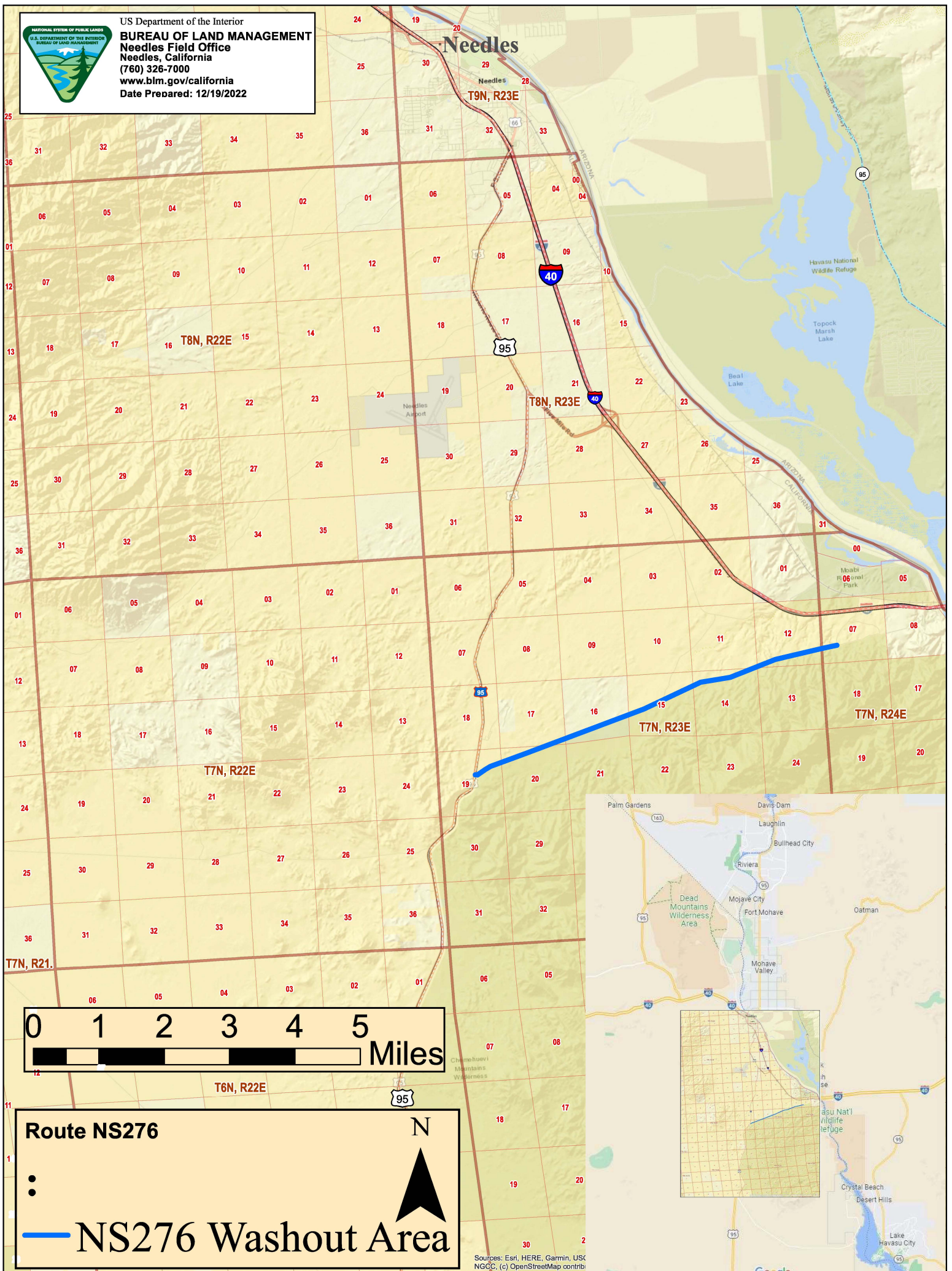




US Department of the Interior
BUREAU OF LAND MANAGEMENT
 Needles Field Office
 Needles, California
 (760) 326-7000
 www.blm.gov/california
 Date Prepared: 12/19/2022



Route NS276

●

— **NS276 Washout Area**

N

Sources: Esri, HERE, Garmin, USNGCC, (c) OpenStreetMap contrib