



# United States Department of the Interior

## BUREAU OF LAND MANAGEMENT

Pocatello Field Office  
4350 Cliffs Drive  
Pocatello, Idaho 83204  
(208) 478-6340



ID102-TS-2023.0001

November 8, 2022

### LANDER CREEK SANITATION TIMBER SALE PROSPECTUS

The right is hereby reserved to waive technical defects in this supplement.

#### **THIS SALE IS SOLD WITHOUT GUARANTEED ACCESS.**

1. DATE AND PLACE OF SEALED BID AUCTION SALE:

**Sealed bids** will be received by the Pocatello Field Manager, or her representatives, in the Pocatello Field Office, 4350 Cliffs Drive, Pocatello, Idaho 83204, **prior to and opened and posted at 10:00 a. m. Mountain Time, on Thursday, December 1st, 2022.** Sealed bids received after this time will not be accepted.

2. LOCATION OF TIMBER SALE AREA, TIMBER TYPE, VOLUME, APPRAISED VALUE:

Lander Creek Timber Sale				
T. 06 S., R. 44 E. Sections 1-3 Boise Meridian, Caribou County, Idaho				
Approximate No. Merchantable Trees	Estimated Contract <u>NET</u> Volume *(15% deducted from <u>GROSS</u> for defect)	Species	Appraised <u>Value</u> per unit	Appraised Value
BID ITEM	4,500 Tons (~700 MBF)	Mixed Conifer	\$2.00/ton ~\$13.00/MBF	\$9,000.00
Total	4,500 tons			\$9,000.00

This sale will be sold by weight. Bidding will be on the sawtimber tonnage only. Tons to MBF conversion was 6.5 tons/MBF. The above volumes and value are only an estimate. The actual amount of sawtimber will be determined by scaled weight. (See special provisions)

## **Field Tour**

There will be no formal field tour held for this timber sale due to constantly changing weather this time of year. Inspection of timber sale units will fall on interested parties. If you have questions, please contact Channing Swan at 208-478-6389.

### **3. STATUS**

The timber sale contract area consists of approximately 75 acres within 2 units, as marked (leave trees are marked). The units consist of 75 acres and all marked trees are Douglas-fir and Lodgepole pine. Additional larger trees may be required to be removed from within Aspen stands. Timber will be sold by scaled weight, per ton. The volume and appraised value are an estimate only for administrative purposes. The actual amount will be determined by scaled weight.

The sale consists of tractor and dozer ground units. Topography is variable.

No trees shall be cut outside the mapped and/or boundary area designated by the authorized officer (maps enclosed). All timber for sale hereunder is restricted from export from the United States in the form of unprocessed timber.

Cutting may be restricted to May 1 to August 15 due to the presences of raptor species nesting in the area. **Restriction dates may be waived by the authorized officer.**

### **4. CRUISE INFORMATION**

The volume(s) listed below are an *estimate only* and were determined through establishing variable plots. Mean tree diameter is 11.3 inches DBH and mean height is 65 feet for Douglas-fir. Mean tree diameter is 11.2 inches DBH and mean height is 68 feet for Lodgepole Pine. Total volumes were calculated using the Caribou/Targhee National Forest volume tables for diameter and total tree heights. Total volumes shown on the stand table are based on 75 acres.

## All Unit Cruise Data (individual unit data can be provided)

	I" Diam Class	Lorey's Height	Avg. BH Age	TPA	Basal Area /Ac	CUFT Gross /Ac	CUFT Net /Ac	BDFT Gross /Ac	BDFT Net /Ac	Ht/ Diam. Ratio	Curt. Rel. Den.	Stand Den. Index	Rel. Den. Index
Douglas-fir	6	43		1.3	0.3	6	6			81			
	7	43		8.3	2.3	36	35	60	59	72			
	8			5.0	1.7	No Samples with Height							
	9	61		5.5	2.5	60	52	233	202	82			
	10	57		3.0	1.7	35	30	139	118	67			
	11	62		4.3	2.8	69	66	265	253	69			
	12	60		2.9	2.3	49	45	206	187	59			
	13	77		3.0	2.8	77	57	353	260	70			
	14	80		1.8	2.0	55	51	279	256	68			
	15	61		2.3	2.8	59	58	272	270	48			
	16	72		2.0	2.8	73	64	366	320	54			
	17			1.0	1.7	No Samples with Height							
	18	70		0.8	1.4	34	32	160	150	47			
	19	83		0.3	0.6	16	12	90	67	52			
	20			0.1	0.3	No Samples with Height							
	22	90		0.3	0.8	27	27	148	148	48			
	23			0.1	0.3	No Samples with Height							
	25			0.1	0.3	No Samples with Height							
	26	105		0.1	0.3	10	8	62	50	48			
Douglas-fir Summary	QMD 11.3	65		42.1	29.6	697	623	2,987	2,633	62	Max SDI: 525 9 52 0.10		
lodgepole pine	6	40		8.0	1.7	32	32			77			
	7	34		10.1	2.8	43	39	100	90	57			
	8	61		10.8	3.9	109	99	420	378	88			
	9	61		7.6	3.4	92	84	345	315	80			
	10	63		17.2	9.3	256	246	1,010	967	77			
	11	59		7.9	5.4	141	125	615	541	63			
	12	72		14.3	11.3	350	314	1,688	1,511	72			
	13	69		9.0	8.5	252	215	1,207	1,028	64			
	14	73		8.1	8.7	276	240	1,334	1,162	63			
	15	72		5.7	7.0	217	204	1,082	1,021	58			
	16	79		2.0	2.8	96	83	488	423	59			
	17	89		1.0	1.7	63	51	343	275	61			
	18	82		1.4	2.5	88	88	485	485	56			
	19	84		0.4	0.8	31	29	166	157	54			
	20			0.1	0.3	No Samples with Height							
	21	85		0.2	0.6	20	20	109	109	47			
	22	70		0.1	0.3	8	8	46	46	37			
	23	76		0.1	0.3	9	8	51	43	40			
	24	85		0.1	0.3	10	8	57	48	42			
	25			0.1	0.3	No Samples with Height							
	26	65		0.1	0.3	8		42		30			
lodgepole pine Summary	QMD 11.2	68		104.5	72.1	2,116	1,884	9,622	8,497	66	Max SDI: 800 22 126 0.16		

## 5. CUTTING AREA AND TOPOGRAPHY

The timber sale contract area consists of approximately 75 acres all of which will be selectively cut. Topography is flat to sloping (0-30%) and all acres will be ground based harvested.

6. TIMBER RESERVATION PROVISIONS

Only stems **without** paint (**yellow**) shall be removed. **Yellow** paint designates “leave” trees. No trees shall be cut outside the mapped and/or boundary area designated by the authorized officer. (Maps Enclosed) All timber for sale hereunder is restricted from export from the United States in the form of unprocessed timber.

7. LOG EXPORT RESTRICTIONS

All timber offered for sale hereunder is restricted from export from the United States in the form of unprocessed timber. For an explanation of log export restrictions see attachment; Section 41, Special Provisions, G. Log Export.

8. DURATION OF CONTRACT

Duration of contract will be **24 (twenty-four) months** for cutting and removal of timber. An additional 1 (one) month is allowed to remove any logging equipment or other personal property of the Purchasers. Extensions of time for cutting and removal will not ordinarily be granted.

9. ROAD CONSTRUCTION AND ACCESS

The Lander Creek Timber Sale is located 4.5 miles south from the Idaho Highway 34 and Lanes Creek Cutoff Rd intersection near Wayan, Idaho (see attached maps). **This sale is sold without guaranteed access. Access to both units will be the responsibility of the contractor.** Several landings and temporary skid trails will need to be constructed to complete harvest. Landings, and existing two track roads will need to be closed, rehabbed and unpassable at the end of the sale as required by authorized officer.

10. BID INFORMATION

This timber will be sold by Sealed Bid auction. To qualify for bidding, present to the officer conducting the sale a written bid and bid deposit in the form of cash, money order, bank draft or cashier's check in the amount of **\$900.00**. All checks and other remittance due the Bureau should be made payable to USDI, Bureau of Land Management.

11. ENVIRONMENTAL PROTECTION

The Purchaser shall make a contribution of **\$10.00 per acre (\$10.00/acre) for a total of \$750.00** for sawlog and ton wood removal from the contract area for the purchase and application of herbicide along roads and skid trails to control noxious weeds. Payments shall be made concurrently with payment for timber. The basic performance bond required for timber purchased under this contract will be increased by **seven hundred and fifty and 00/100 dollars (\$750.00)** to guarantee payment of these monies.

## 12. PERFORMANCE BOND

The performance bond will be not less than 20% of the contract price will be required. The performance bond will be equal to the sale price, up to \$10,000.00 and rounded up the nearest \$100.00 (i.e. sale price of \$8775.00, the bond will be \$8,800.00). Final sale prices between \$10,000 and \$50,000.00, the performance bond will be a flat rate of \$10,000.00. Final sale prices above \$50,000.00, the performance bond will be 20% of the sale price.

NOTICE: Submission of the required bid deposit and written bid of not less than the advertised appraised price is required to qualify. Written bids must be submitted in duplicate on form 5440-9. If you are not a successful bidder, your deposit will be returned immediately after the sale.

The highest bidder for this sale will be required to confirm his bid on bid forms furnished by the sale officer.

A copy of the timber sale contract is available for inspection at the Pocatello & Upper Snake Field Offices.

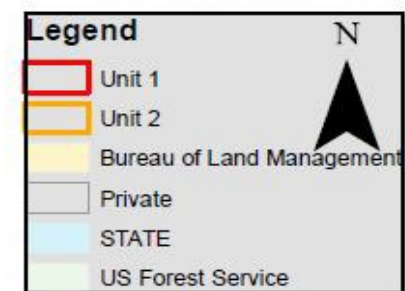
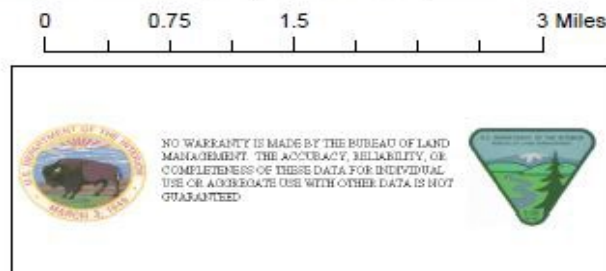
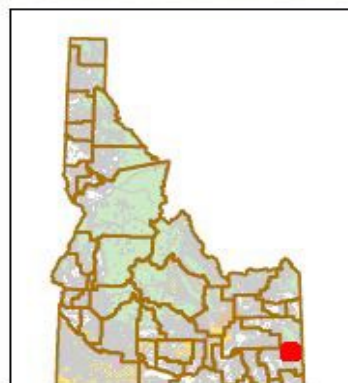
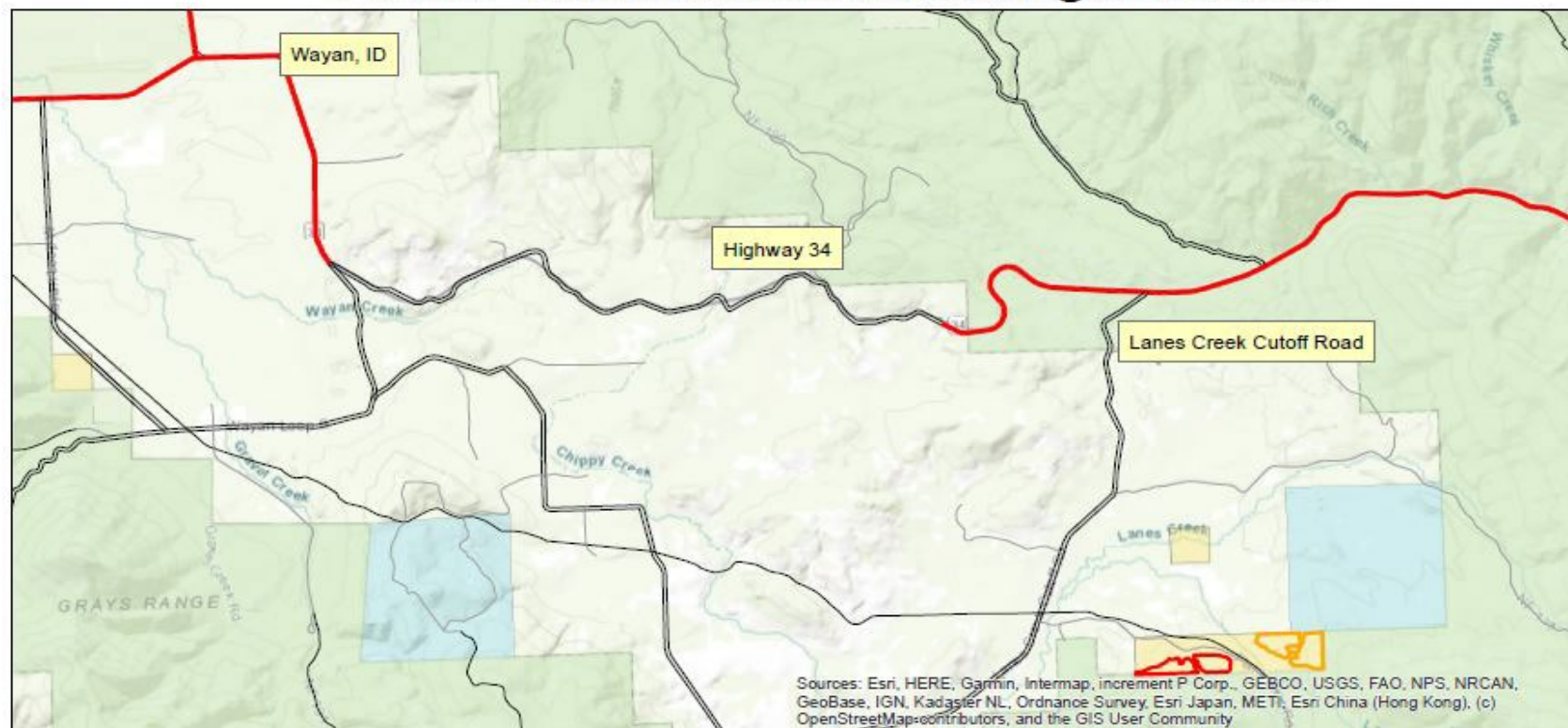
The successful bidder will be required, as a condition of award, to sign a certificate to the effect that the bid was arrived at by the bidder or offeror independently and was tendered without collusion with any other bidder or offeror.

Detailed contract information may be obtained at the Bureau of Land Management, Pocatello Field Office, 4350 S. Cliffs Drive Pocatello, Idaho or telephone Channing Swan, Forester, at 208-478-6389.

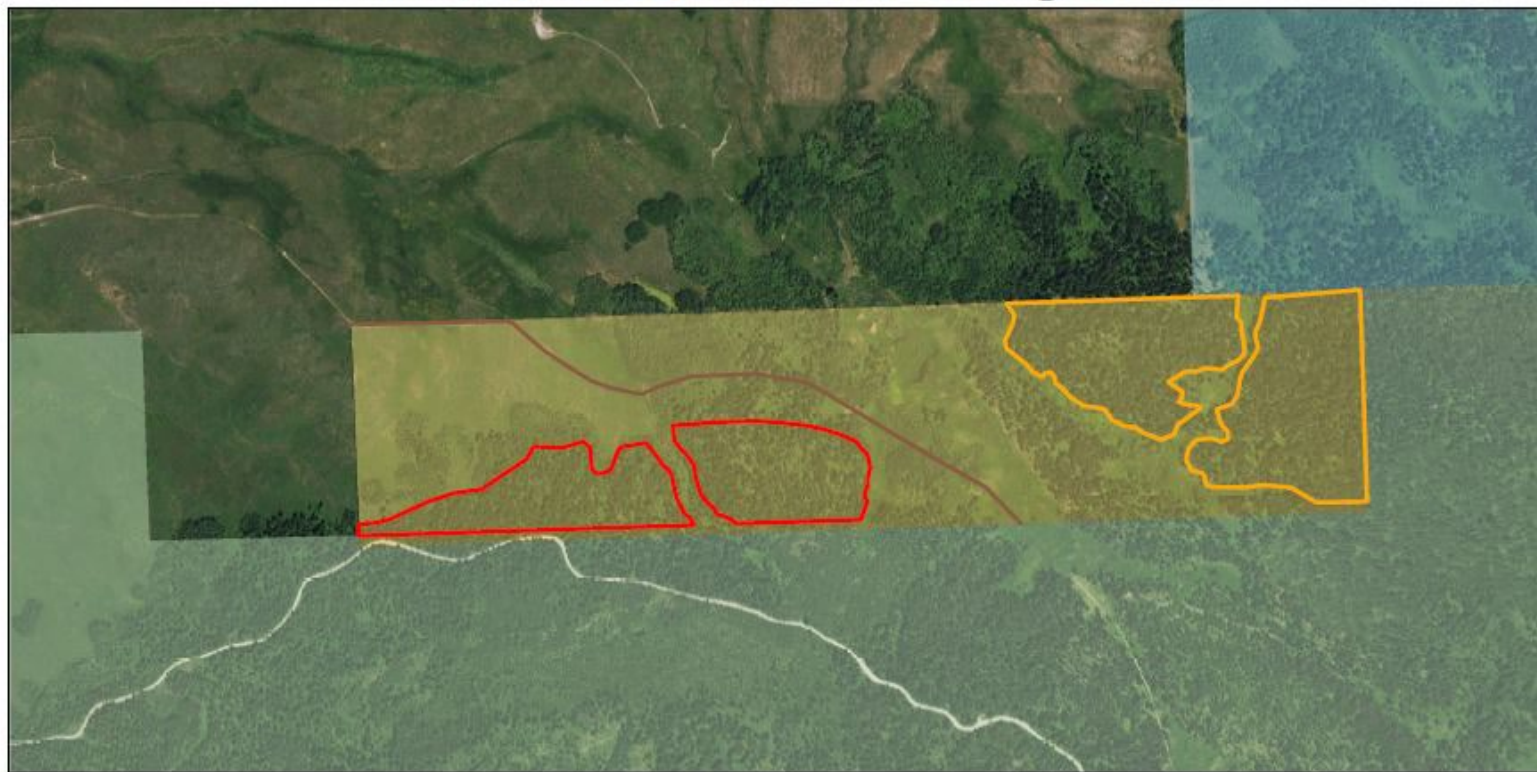
### Attachments:

Section 41	- Special Provision
Exhibit A	- Location Map
Exhibit A-1	- Cutting Unit Map
Exhibit B	-Volume/Value Determination
Exhibit C	-Waterbar Diagram
Form 5440-9	- Deposit and Bid for Timber
Form 1822-04	- Cash Bond
Form 1140-04	- Nonsegregated Facilities

# Lander Creek Sanitation Salvage Location



# Lander Creek Sanitation Salvage Units



0 0.125 0.25 0.5 Miles

