



United States Department of the Interior



BUREAU OF LAND MANAGEMENT
Prineville District Office
3050 NE 3rd Street
Prineville, Oregon 97754

In Reply Refer To:
1814/2920 (OR060)

CLOSURE OF PUBLIC LANDS

Bureau of Land Management Prineville District Office

IMMEDIATE CLOSURE OF AREA: Deschutes County, Oregon

AGENCY: Bureau of Land Management (BLM), Prineville District, Deschutes Field Office.

ACTION: Emergency closure of selected public lands in Deschutes County, Oregon.

SUMMARY: Pursuant to 43 CFR 9268.3 and 43 CFR 8364.1, the Bureau of Land Management hereby provides notice that public lands within ¼ mile of Darlene Road and Rosland Road in T.21S., R.11E., Section 31; T.22S., R.11E., Section 06; and T.22S., R.10E., Section 1, are being temporarily closed to protect public safety due to maintenance on the City of La Pine waterline. Darlene Way will remain open to through traffic, and the public will be able to use the pit at the Rosland OHV Play Area. Additional exceptions to these prohibitions are noted below under Supplemental Information.

FOR FURTHER INFORMATION CONTACT: Austin Tschida, District Forester, at 3050 N.E. Third St. Prineville, Oregon 97754, telephone (541) 416-6700. BLM will post this closure order and map online and at entry points to this area. Copies of the order and maps are also available from the Prineville District Office by calling (541) 416-6700.

SUPPLEMENTAL INFORMATION: The following are exempt from the provisions of this Order:

- Federal, State, or local officer, contractor, or employee operating within the scope of their duties.
- Members of any organized medical, rescue or firefighting force in performance of an official duty.
- Any person carrying written approval signed by the Authorized Officer allowing access.

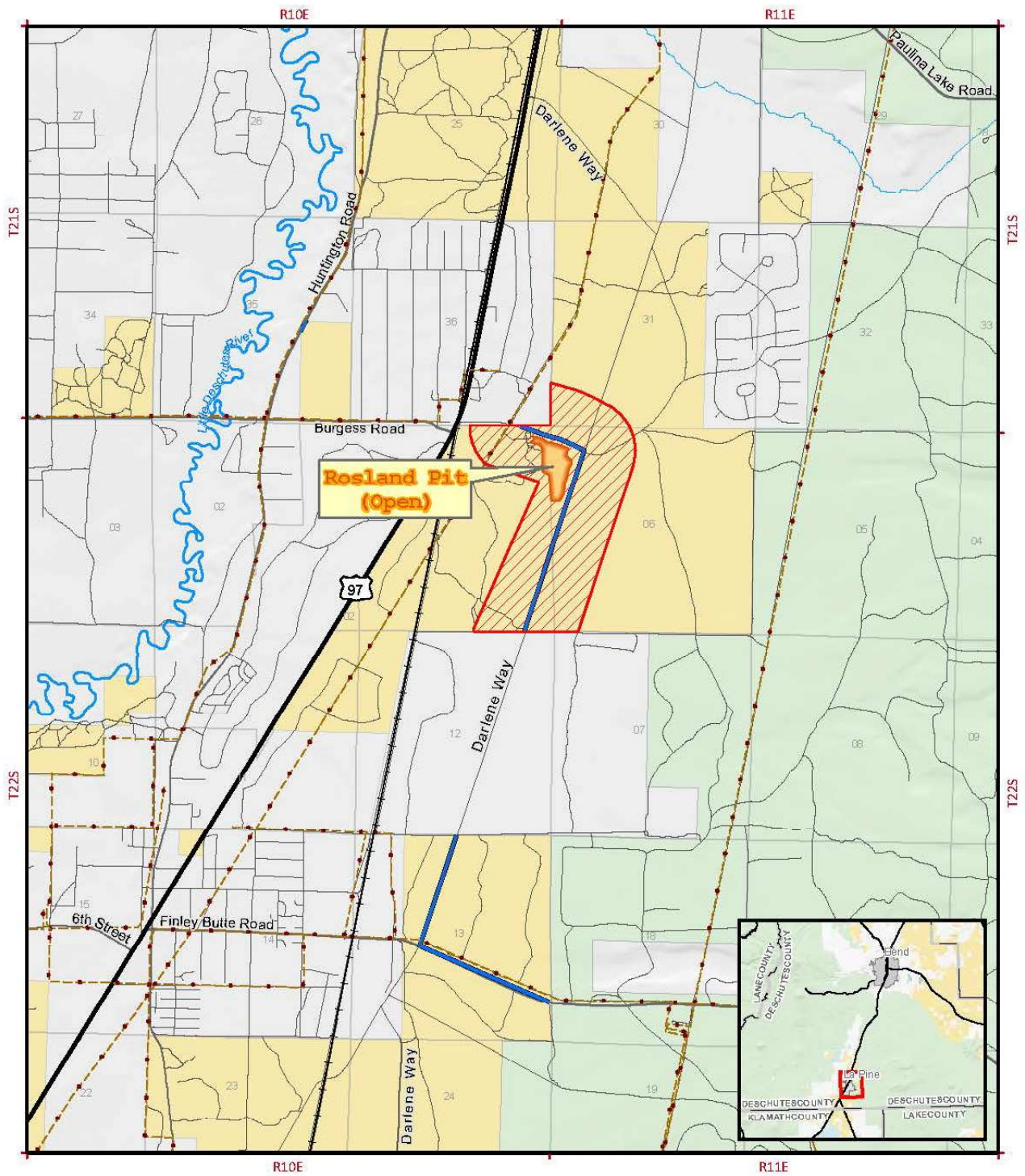
PENALTIES: Any person who violates this closure may be tried before a United States Magistrate and fined no more than \$1,000 or imprisoned for no more than 12 months, or both. Such violations may also be subject to the enhanced fines provided for by 18 U.S.C. 3571.

EFFECTIVE: This closure will be in effect from 8:00 AM OCTOBER 21, 2022, until waterline work in this area is completed.

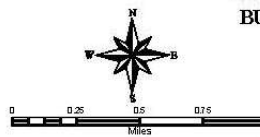
LISA CLARK
Digitally signed by LISA
CLARK
Date: 2022.10.17
15:02:37 -07'00'

Lisa M. Clark
Acting Deschutes Field Manager

Date



- Legend**
- La Pine Water Main
 - Highway
 - Road
 - Railroad
 - Powerline
 - Closed Area
 - OHV Pit
- Administered Lands**
- Bureau of Land Management
 - U.S. Forest Service
 - Private/Other



US DEPARTMENT OF THE INTERIOR
BUREAU OF LAND MANAGEMENT
PRINEVILLE DISTRICT



No warranty is made by the Bureau of Land Management as to the accuracy, reliability, or completeness of these data for individual or aggregate use with other data. Original data were compiled from various sources and may be updated without notification.

La Pine Temporary Closure - October 17, 2022