

Year 2022 Inventory Unit Number/Name Small Unnumbered Units/OR-015-0000

FORM 1

DOCUMENTATION OF BLM WILDERNESS INVENTORY FINDINGS ON RECORD

1. Is there existing BLM wilderness inventory information on all or part of this area?

No _____ (go to Form 2) Yes X (if more than one unit is within the area, list the names/numbers of those units.)

a) Inventory Source(s):

Wilderness Proposed Initial Inventory, Oregon and Washington: Roadless Areas and Islands Which Clearly Do Not Have Wilderness Characteristics (April 1979)

Wilderness Review, Intensive Inventory, Final Decisions of 30 Selected Units in Southeast Oregon and Proposed Decisions on Other Intensively Inventoried Units in Oregon and Washington (March 1980)

Wilderness Inventory, Oregon and Washington: Final Intensive Inventory Decisions (November 1980)

b) Inventory Unit Name(s)/Number(s): none

c) Map Name(s)/Number(s):

Map - Proposed Initial Inventory. Roadless Areas and Islands which do not have Wilderness Characteristics, April 1979

Map - Intensive Wilderness Inventory, Final Decisions for 30 Selected Inventory Units and Proposed Decisions for Other Intensive Inventory Units, March 1980

Map - Intensive Wilderness Inventory Final Decisions, November 1980.

d) BLM District(s)/Field Office(s): Lakeview District/Lakeview Field Office

2. BLM Inventory Findings on Record

Existing inventory information regarding wilderness characteristics (if more than one BLM inventory unit is associated with the area, list each unit/acreage and answer each question individually for each inventory unit):

The previous wilderness inventory (1978-80) covered all BLM-administered lands in the Lakeview Resource Area (now referred to as a "Field Office"). However, no summaries are available for any small inventory units, presumably because during the previous inventory they

were found to be smaller than 5,000 acres, did not meet the minimum size criterion or any exceptions to the size criterion, and were not documented in detail.

FORM 2

DOCUMENTATION OF CURRENT WILDERNESS INVENTORY CONDITIONS

a. Unit Number/Name OR-015-0000/Small Unnumbered Units

(1) Is the unit of sufficient size? Yes No

Boundary Determinations: BLM staff reviewed its own historic wilderness inventory information and citizen-provided information to identify potential data gaps. Between 2007 and 2015, BLM staff conducted field inventory of BLM-administered lands located outside of designated wilderness study areas (WSAs) within the Lakeview Resource Area (now referred to as a “Field Office”) to use to update both its road and wilderness inventories. This field work included collecting photo documentation of potential inventory unit boundary roads. Using BLM and citizen-provided photos, field logs, and staff field knowledge, a BLM interdisciplinary (ID) team completed an analysis of most motorized routes within the field office to determine which routes met the wilderness inventory boundary road definitions and which did not. These boundary road determinations are documented in about 550 individual Route Analysis Forms retained in BLM’s wilderness inventory files.

These boundary roads were used, along with the boundaries of developed rights-of-way (associated with utility lines/corridors and major highways), and non-federal ownership boundaries, to define the boundaries for inventory units that were subsequently evaluated for wilderness characteristics by the ID team. Additional background on the process that the BLM ID team followed during this inventory update process is documented in *Wilderness Inventory Maintenance Process for the Lakeview Resource Area*, BLM contained in the wilderness inventory file.

DESCRIPTION OF CURRENT CONDITIONS: As a result, of the boundary determination process described above, the BLM ID Team identified 820 distinct inventory units. A total of 666 of these inventory units are scattered throughout the Lakeview Field Office and failed to meet the size criteria (roadless area greater than 5,000 acres) or any of the exceptions to the size criteria (Map 1). Based on this determination there was no need for the BLM ID team to evaluate these small units further. This evaluation collectively documents all of these small units herein. (Note: all inventory units that met the size criteria, including 26 small units determined to be contiguous with wilderness study areas, have been evaluated separately).

(2) Is the unit in a natural condition? Yes No N/A

Naturalness was not evaluated as these units did not meet the minimum size criteria.

(3) Does the unit (or the remainder of the unit if a portion has been excluded due to unnaturalness and the remainder is of sufficient size) have outstanding opportunities for solitude? Yes No N/A

Solitude opportunities were not evaluated as these units did not meet the minimum size criteria.

(4) Does the unit (or the remainder of the unit if a portion has been excluded due to unnaturalness and the remainder is of sufficient size) have outstanding opportunities for primitive and unconfined recreation? Yes _____ No _____ N/A X

Recreation opportunities were not evaluated as these units did not meet the minimum size criteria.

(5) Does the unit have supplemental values? Yes _____ No _____ N/A X

Supplemental values were not evaluated as these units did not meet the minimum size criteria.

Summary of Findings and Conclusion

Unit Name and Number OR-015-0000/Small Unnumbered Units

Summary Results of Analysis:

1. Do the areas meet the size requirements? _____ Yes X No
2. Do the areas appear to be natural? _____ Yes _____ No X NA
3. Do the areas offer outstanding opportunities for solitude or a primitive and unconfined type of recreation? _____ Yes _____ No X NA
4. Do the areas have supplemental values? _____ Yes _____ No X NA

Conclusion (Check One):

_____ The areas- or portions of the areas- have wilderness character (*items 1, 2 and 3 are checked "yes"*).

X The areas do not have wilderness character (*any of items 1, 2 and 3 are checked "no"*).

Prepared by:

Paul Whitman

Planning and Environmental Coordinator

Paul Whitman

Date: 10/11/2022

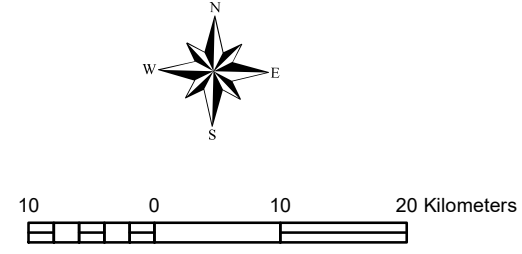
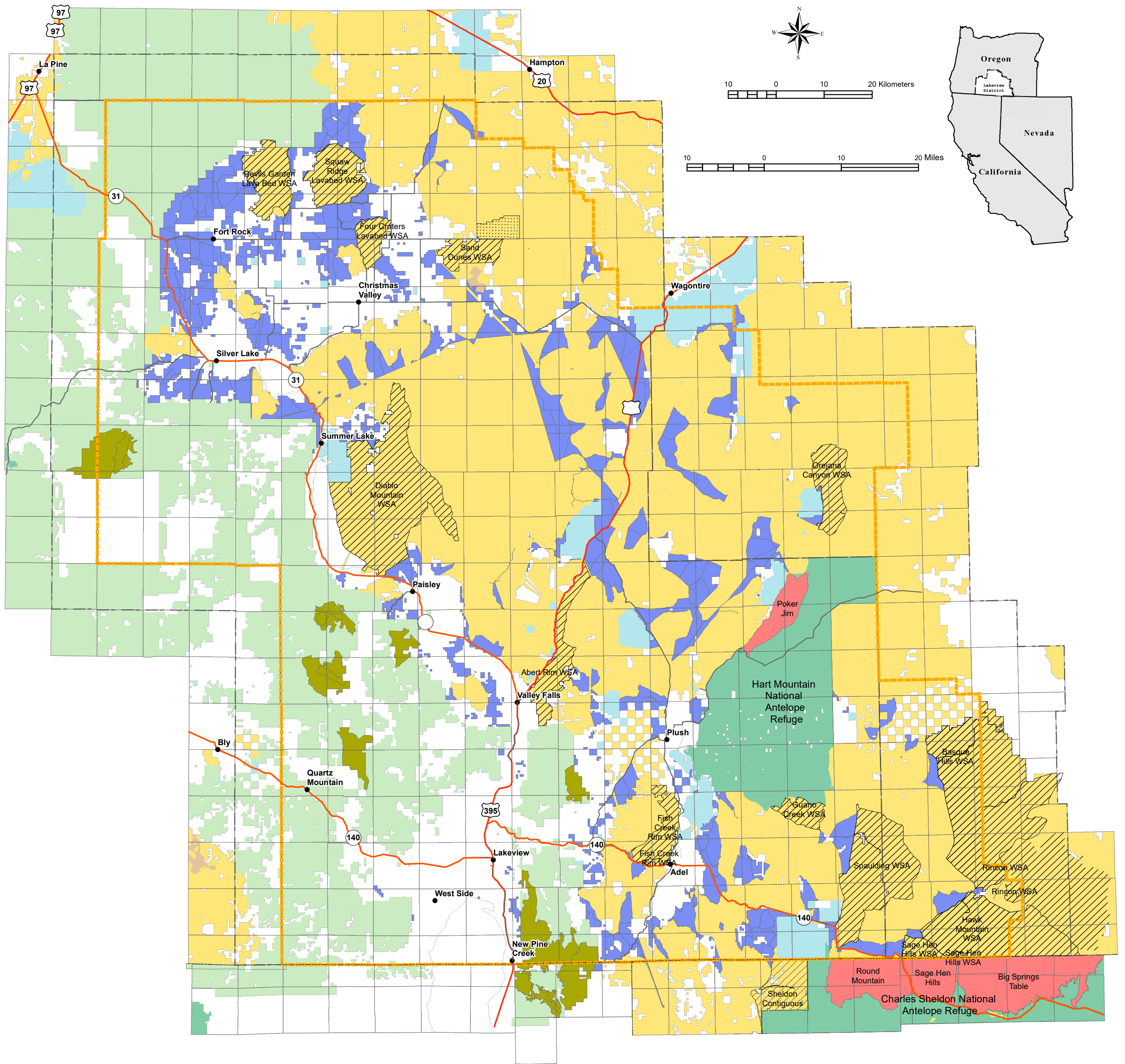
Approved by:

Jami Ludwig

Jami Ludwig
Field Manager

10/21/22
Date

Note: This form documents information that constitutes an inventory finding on wilderness characteristics. It does not represent a formal land use allocation or a final agency decision subject to administrative remedies under either 43 CFR parts 4 or 1610.5-2.



Legend			
	Units that Failed Size Criteria		Bureau of Land Management
	BLM Wilderness Study Areas		U.S. Forest Service
	Lost Forest Instant Study Area		U.S. Fish and Wildlife Service
	USFWS Wilderness Study Area		Government Services Administration
	USFS Roadless Areas		State
	US Highways		Private or Local Government
	State Highways		Lakeview Field Office
	Main Roads		

U. S. DEPARTMENT OF THE INTERIOR
Bureau of Land Management

Lakeview District
Lakeview Field Office



No warranty is made by the Bureau of Land Management as to the accuracy, reliability, or completeness of these data for individual or aggregate use with other data. Original data were compiled from various sources. This information may not meet National Map Accuracy Standards. This product was developed through digital means and may be updated without notification.

Wilderness Inventory Units that Failed to Meet Size Criteria