

FORM 1

DOCUMENTATION OF BLM WILDERNESS INVENTORY FINDINGS ON RECORD

1. Is there existing BLM wilderness inventory information on all or part of this area?

No _____ (go to Form 2) Yes X (if more than one unit is within the area, list the names/numbers of those units.)

a) Inventory Source: U.S. Department of the Interior: Bureau of Land Management, Oregon, Wilderness Review - Initial Inventory: Proposed Decision on Public Lands Obviously Lacking Wilderness Characteristics, April, 1979.

b) Inventory Unit Name(s)/Number(s): Crane Mountain/1-160

c) Map Name(s)/Number(s): U.S. Department of the Interior: Bureau of Land Management, Oregon, Wilderness Review - Initial Inventory: Proposed Decision on Public Lands Obviously Lacking Wilderness Characteristics, April, 1979.

d) BLM District(s)/Field Office(s): Lakeview District, Lakeview Resource Area

2. BLM Inventory Findings on Record

Existing inventory information regarding wilderness characteristics (if more than one BLM inventory unit is associated with the area, list each unit/acreage and answer each question individually for each inventory unit):

Unit #	Size (historic acres)	Natural Condition? Y/N	Outstanding Solitude? Y/N	Outstanding Primitive & Unconfined Recreation? Y/N	Supplemental Values? Y/N
1-160	1,600 acres	N	N	N	NA
Unnumbered Small Units	< 5,000 acres	NA	NA	NA	NA

Summarize any known primary reasons for prior inventory findings listed in this table:

Unit 1-160 was described as several blocks of public land located about 4 miles south of Lakeview near Crane Mountain and totaling about 1,600 acres. The blocks were located in mountainous terrain contiguous with a Forest Service RARE II lands (Crane Mountain area). The adjacent RARE II units did not meet the wilderness criteria (BLM 1979, FS 1987).

None of the other small units scattered across the southern portion of the Lakeview Resource Area were found to meet the minimum size criteria or any of the exceptions to the size criteria and were not evaluated in detail during the initial inventory phase.

FORM 2

CURRENT CONDITIONS: Presence or Absence of Wilderness Characteristics

Unit Number/Name: Small units scattered across the southern portion of the Lakeview Resource area

(1) Is the unit of sufficient size? (If the area meets one of the exceptions to the size criterion, check "Yes" and describe the exception below) Yes No

Description: Between 2008 and 2014, the BLM conducted field inventory of scattered BLM-administered parcels in the southern portion of the Lakeview Resource Area (including the Crane Mountain area) to update its existing road and wilderness inventories. This field work included photo documentation of potential inventory unit boundary routes. Using BLM photos, field logs, and staff field knowledge, a BLM inter-disciplinary (ID) team completed an analysis of the motorized routes within the area in November 2014. The results of the route analysis are documented in the route analysis forms contained in the wilderness evaluation file.

The BLM ID team determined that County Roads 1-11G (Meadow) and 1-15 (Crane Mountain) and FS Road 3900-015 currently meet the wilderness inventory definition of a boundary road and form the boundaries of several inventory units. The remainder of the inventory unit boundaries are comprised of private land or Forest Service ownership boundaries (see Map 1 attached to road forms).

A total of 15 inventory units were identified to the south of the town of Lakeview, OR (Map 1). The units range in size from 31 to 1,465 acres of BLM-administered lands and, therefore, fail to meet the minimum size criteria. Five of the 15 units (OR-015-211A/North Crane Mountain, OR-015-211C/South Crane Mountain, OR-015-211D/South Tandy Creek, OR-015-211F/Crane Mountain East, and OR-015-212/Tenmile Creek) lie contiguous with the Forest Service's Crane Mountain or Mt. Bidwell roadless areas (Maps 2A and 2B). While these 2 areas are currently being managed as roadless areas, neither is recommended for wilderness designation or is being managed to protect wilderness values (FS 1987, 1991). Therefore, these 5 small units do not meet any of the exceptions to the minimum size criteria (BLM 2012, p. 5-6). For these reasons, the BLM ID team determined that all 15 of these units failed to meet the size criteria and were dropped from further consideration.

Additional background on the process that the BLM ID team followed during this evaluation is contained in the document, *Wilderness Inventory Maintenance Process for the Lakeview Resource Area, BLM*, and the ID Team meeting notes contained in the wilderness inventory file.

(2) Is the unit(s) in a natural condition? Yes No N/A

The current natural condition of these units was not evaluated because the units failed to meet the minimum size requirement or any of the exceptions to the size criteria.

(3) Does the unit (or the remainder of the unit if a portion has been excluded due to unnaturalness and the remainder is of sufficient size) have outstanding opportunities for solitude? Yes No N/A

The current opportunities for solitude within these units were not evaluated because the units failed to meet the minimum size requirement or any of the exceptions to the size criteria .

(4) Does the unit (or the remainder of the unit if a portion has been excluded due to unnaturalness and the remainder is of sufficient size) have outstanding opportunities for primitive and unconfined recreation? Yes No N/A

The current opportunities for recreation within these units were not evaluated because the units failed to meet the minimum size requirement or any of the exceptions to the size criteria.

(5) Does the unit have supplemental values? Yes No N/A

Supplemental values were not evaluated because the units failed to meet the size criteria or any of the exceptions to the size criteria.

Summary of Analysis*

Unit Name and Number: Small units scattered across the southern portion of the Lakeview Resource area

Summary Results of Analysis:

1. Do the areas meet the size requirements? Yes No
2. Do the areas appear to be natural? Yes No N/A
3. Do the areas offer outstanding opportunities for solitude or a primitive and unconfined type of recreation? Yes No N/A
4. Do the areas have supplemental values? Yes No N/A

Conclusion (Check One):

The areas- or a portion of the areas-have wilderness character:
(items 1, 2 and 3 must be checked "yes").

The areas do not have wilderness character: (any of items 1, 2 and 3 are checked "no").

Prepared by (ID Team Member Names and Titles):

Paul Whitman
Paul Whitman: Planning Coordinator

11/13/2014
Date

Chris Bishop
Chris Bishop: Recreation and Wilderness Specialist

11/13/2014
Date

Jayna Ferrell
Jayna Ferrell: Range Management Specialist

11/13/2014
Date

Theresa Romasko
Theresa Romasko: Assistant Field Manager

11/13/2014
Date

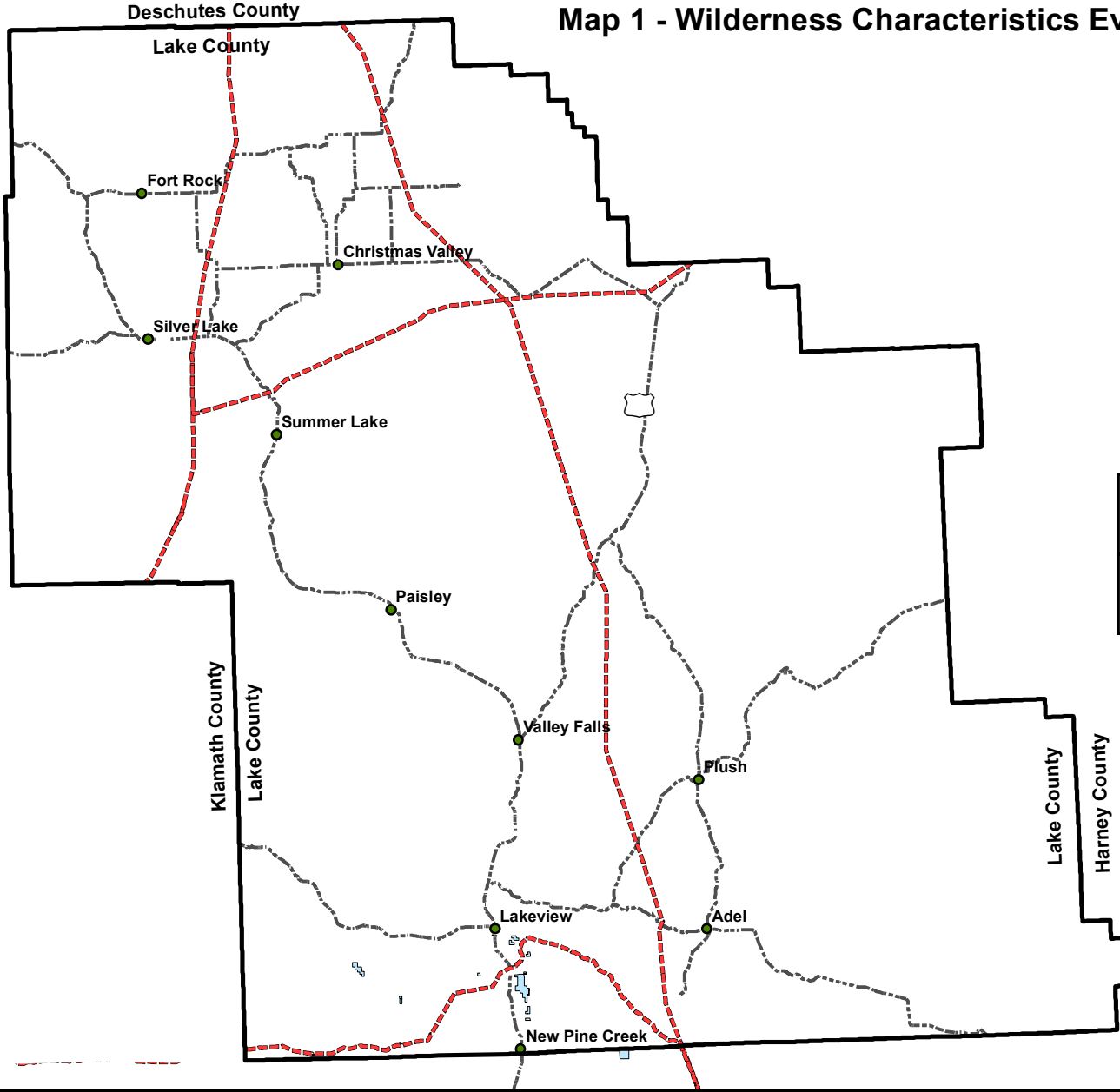
Approved by:

J. Todd Forbes
J. Todd Forbes
Field Manager

11/18/14
Date

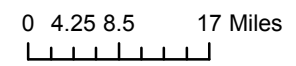
**This form documents information that constitutes an inventory finding on wilderness characteristics. It does not represent a formal land use allocation or a final agency decision subject to administrative remedies under either 43 CFR parts 4 or 1610.5-2.*

Map 1 - Wilderness Characteristics Evaluation Area

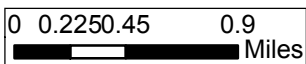
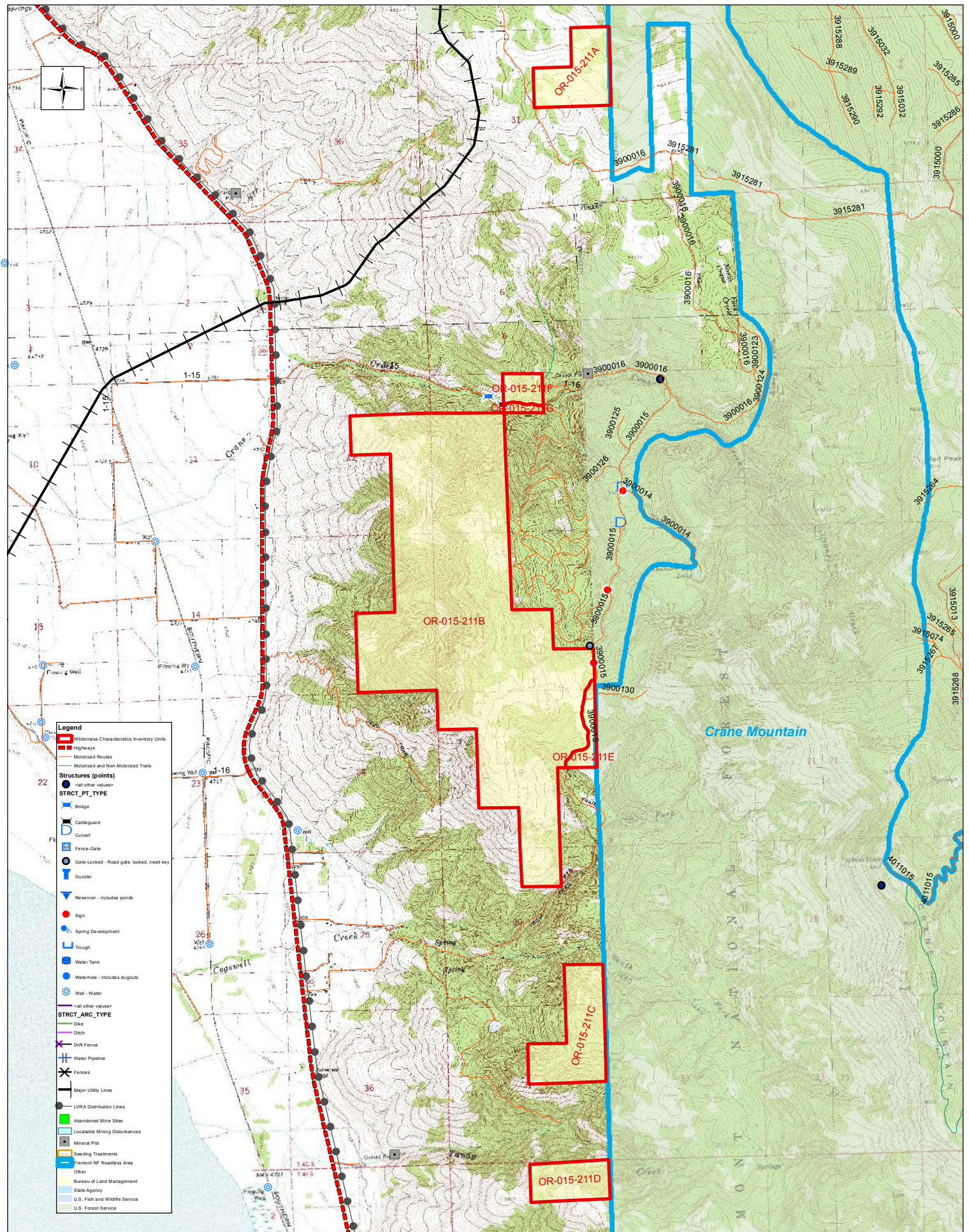


Legend

- Resource Area Boundary
- Wilderness Characteristics Inventory Units
- Cities
- Major Utility Corridors
- Major Roads

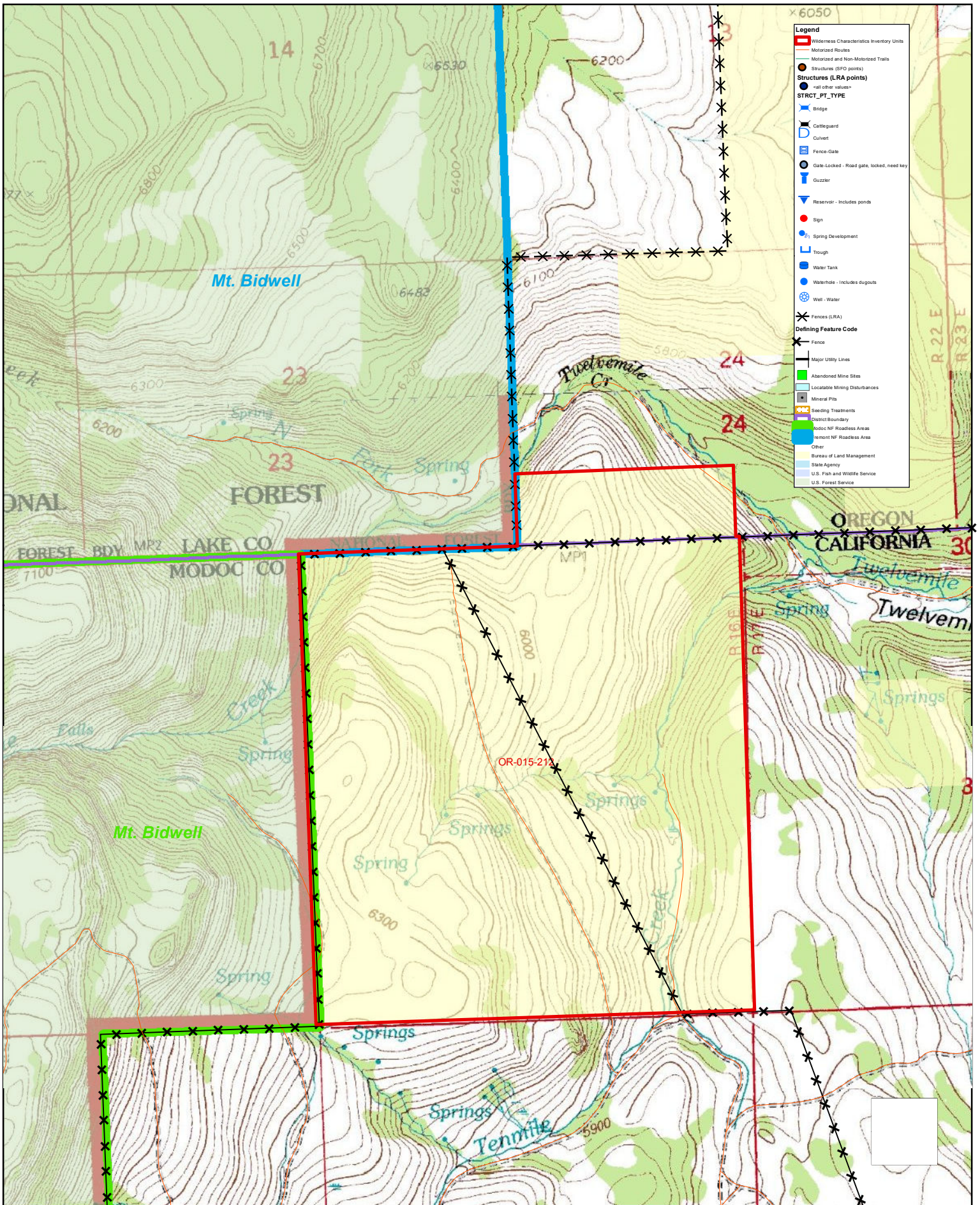


No warranty is made by the Bureau of Land Management as to the accuracy, reliability, or completeness of these data for individual or aggregate use with other data. Original data were compiled from various sources. This information may not meet National Map Accuracy Standards. This product was developed through digital means and may be updated without notification.



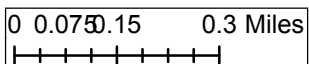
No warranty is made by the Bureau of Land Management as to the accuracy, reliability, or completeness of these data for individual or aggregate use with other data. Original data were compiled from various sources. This information may not meet National Map Accuracy Standards. This product was developed through digital means and may be updated without notification.

Map 2A - Wilderness Characteristics in Crane Mountain Area



Legend

- Wilderness Characteristics Inventory Units
- Motorized Routes
- Motorized and Non-Motorized Trails
- Structure (SFO points)
- Structures (LRA points)
- STRCT_PT_TYPE
- Bridge
- Cattleguard
- Culvert
- Fence-Gate
- Gate-Locked - Road gate, locked, need key
- Guzzer
- Reservoir - Includes ponds
- Sign
- Spring Development
- Trough
- Water Tank
- Washhole - Includes dugouts
- Well - Water
- Fences (LRA)
- Fence
- Major Utility Lines
- Abandoned Mine Sites
- Locatable Mining Disturbances
- Mineral Pits
- Seeding Treatments
- District Boundary
- Roadless Area
- Roadless Area
- Class
- Bureau of Land Management
- State Agency
- U.S. Fish and Wildlife Service
- U.S. Forest Service



No warranty is made by the Bureau of Land Management as to the accuracy, reliability, or completeness of these data for individual or aggregate use with other data. Original data were compiled from various sources. This information may not meet National Map Accuracy Standards. This product was developed through digital means and may be updated without notification.

Map 2B - Wilderness Characteristics in the Tenmile Creek Area